



# The Hansen

1 and 2 bedroom apartments



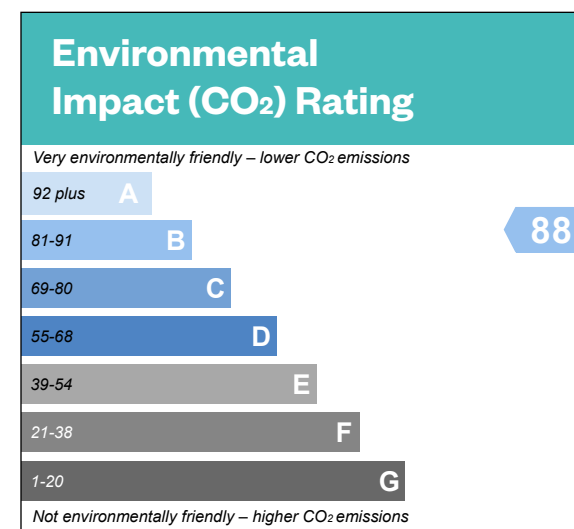
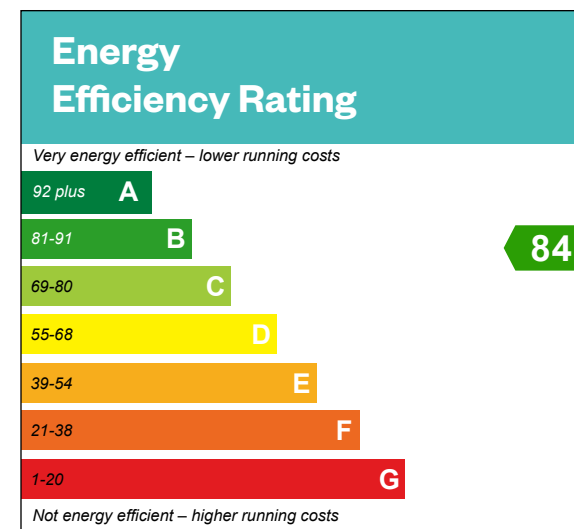
Computed generated image of Apartments 388-396

# The Hansen

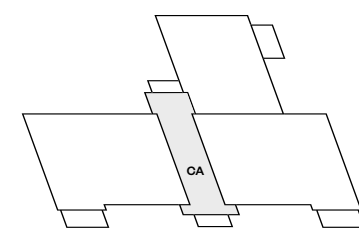
## 2 bedroom apartment

Plots 390 & 393 – as shown

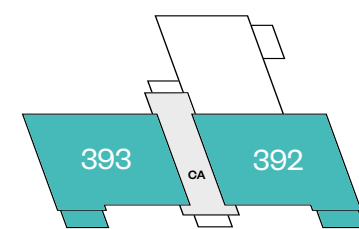
Plots 389 & 392 – handed



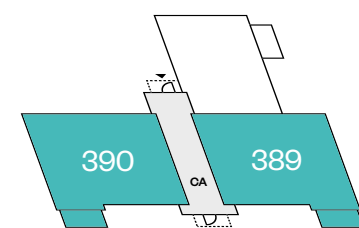
This is a Predicted Energy Assessment for properties that are incomplete. Once the property is completed, this rating will be updated and an official Energy Performance Certificate will be created for the property.



Second floor

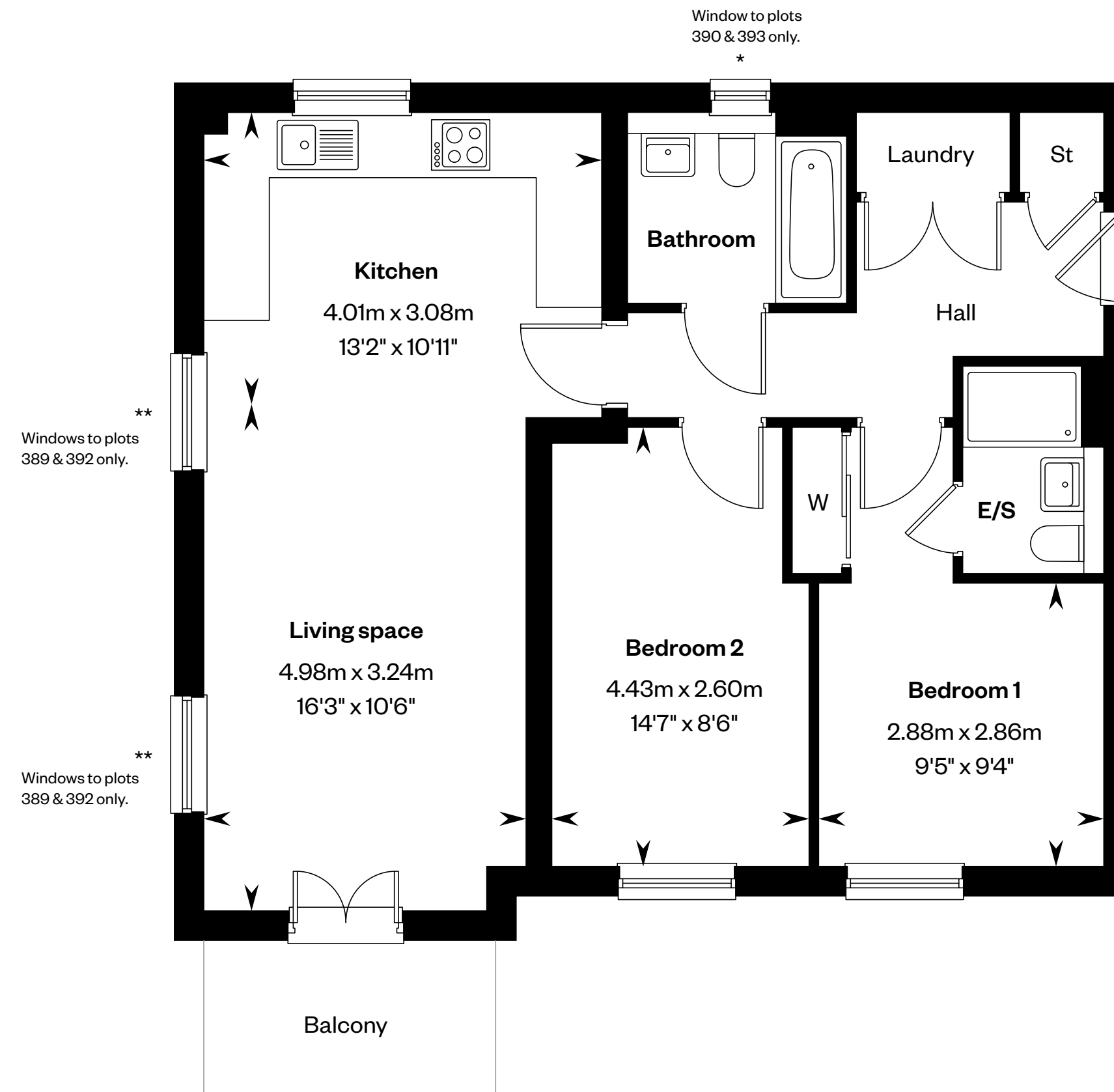


First floor



Ground floor

CA Communal area



\*Window to plots 390 & 393 only. \*\*Windows to plots 389 & 392 only. Please ask your Sales Consultant for further details. E/S: En-Suite. St: Store cupboard. W: Wardrobe.

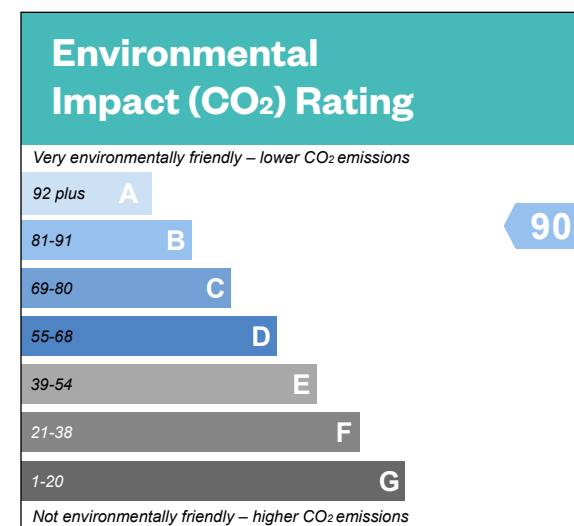
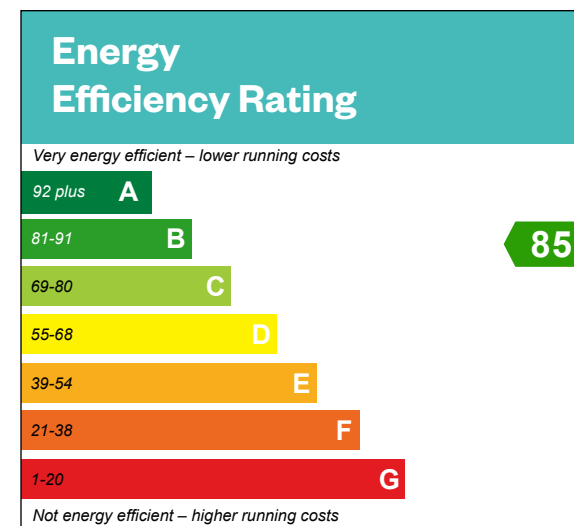
IMPORTANT NOTICE TO CUSTOMERS: The Consumer Protection from Unfair Trading Regulations 2008. Cala Homes (Cotswolds) Limited operates a policy of continual product development and the specifications outlined in this brochure are indicative only. The computer generated images and photographs do not necessarily represent the actual finishings/elevation or treatments, landscaping, furnishings and fittings at this development. Information contained is accurate at date of publication on 15.01.25. See the main brochure for the full Consumer Protection statement.

# The Hansen

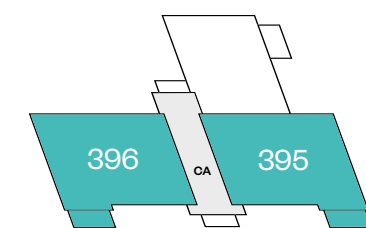
## 2 bedroom apartment

Plot 396 – as shown

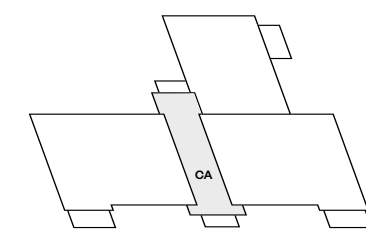
Plot 395 – handed



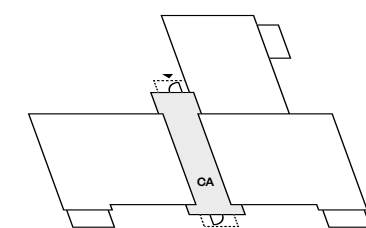
This is a Predicted Energy Assessment for properties that are incomplete. Once the property is completed, this rating will be updated and an official Energy Performance Certificate will be created for the property.



Second floor

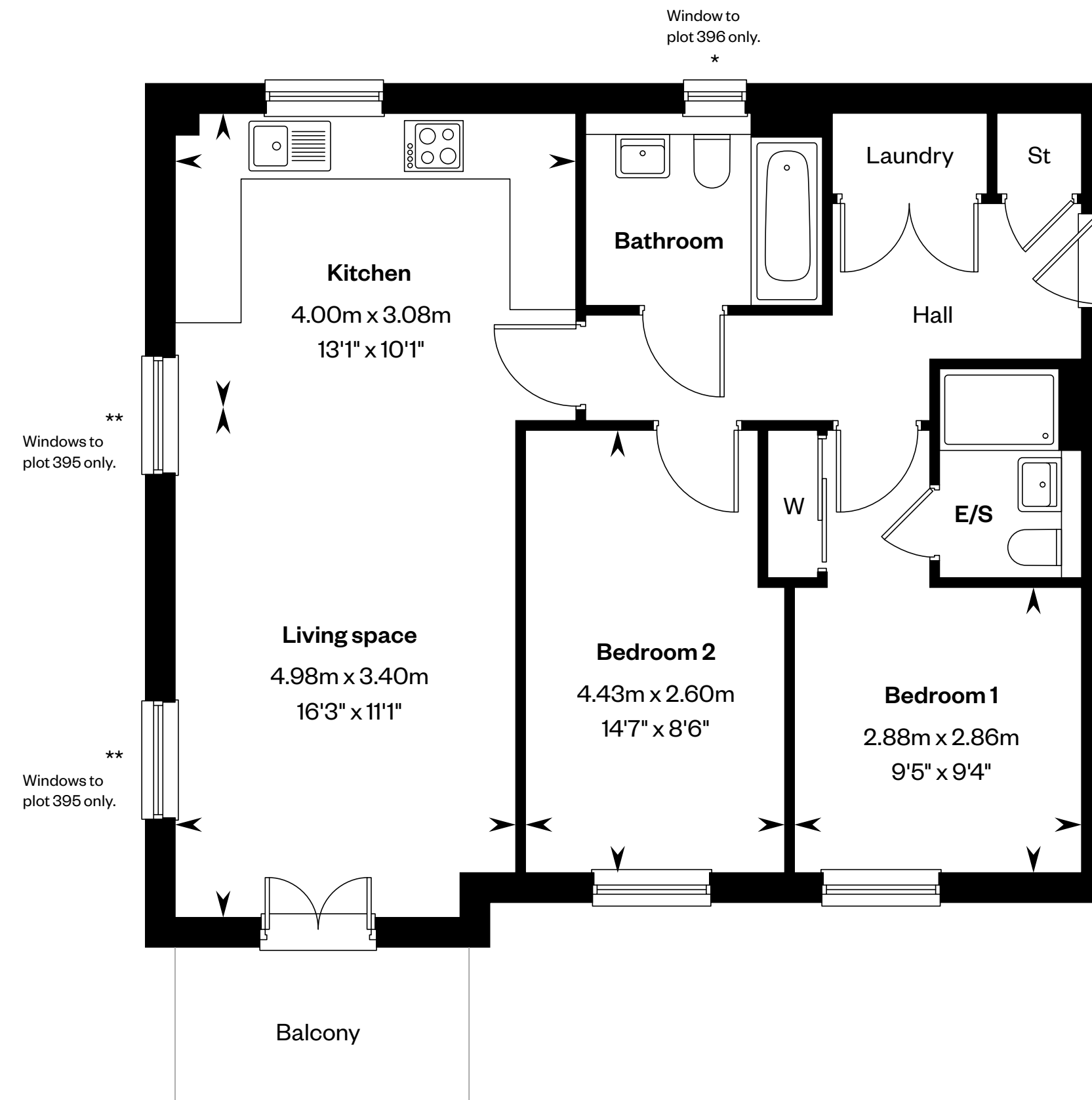


First floor



Ground floor

CA Communal area



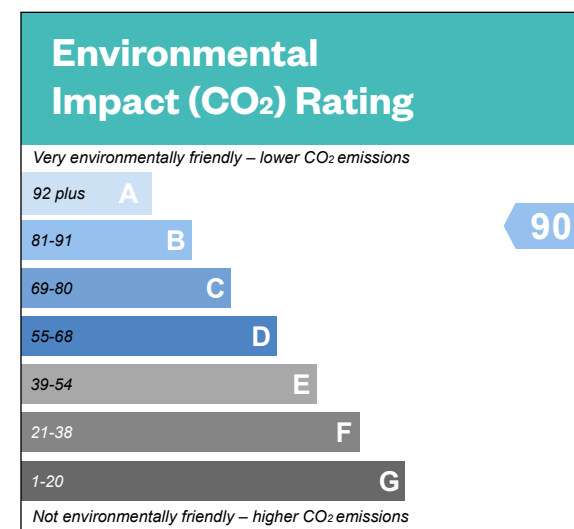
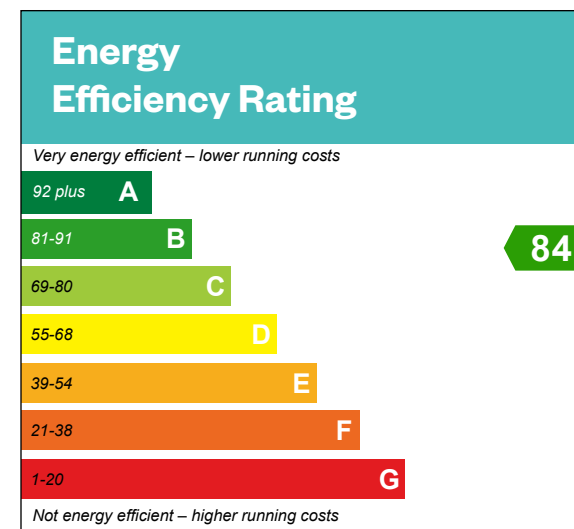
\*Window to plot 396 only. \*\*Windows to plot 396 only. Please ask your Sales Consultant for further details. E/S: En-Suite. St: Store cupboard. W: Wardrobe.

IMPORTANT NOTICE TO CUSTOMERS: The Consumer Protection from Unfair Trading Regulations 2008. Cala Homes (Cotswolds) Limited operates a policy of continual product development and the specifications outlined in this brochure are indicative only. The computer generated images and photographs do not necessarily represent the actual finishings/elevation or treatments, landscaping, furnishings and fittings at this development. Information contained is accurate at date of publication on 15.01.25. See the main brochure for the full Consumer Protection statement.

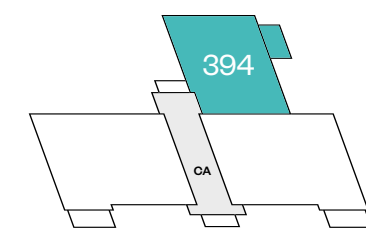
# The Hansen

## 1 bedroom apartment

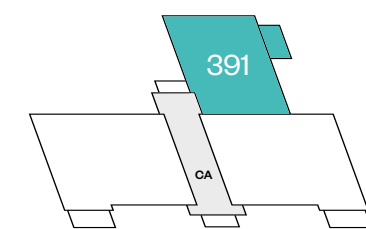
Plots 388, 391 & 394 – as shown



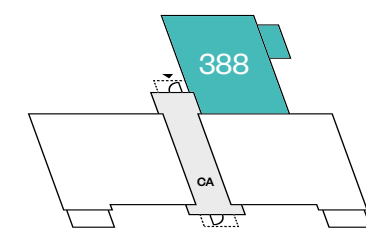
This is a Predicted Energy Assessment for properties that are incomplete. Once the property is completed, this rating will be updated and an official Energy Performance Certificate will be created for the property.



Second floor

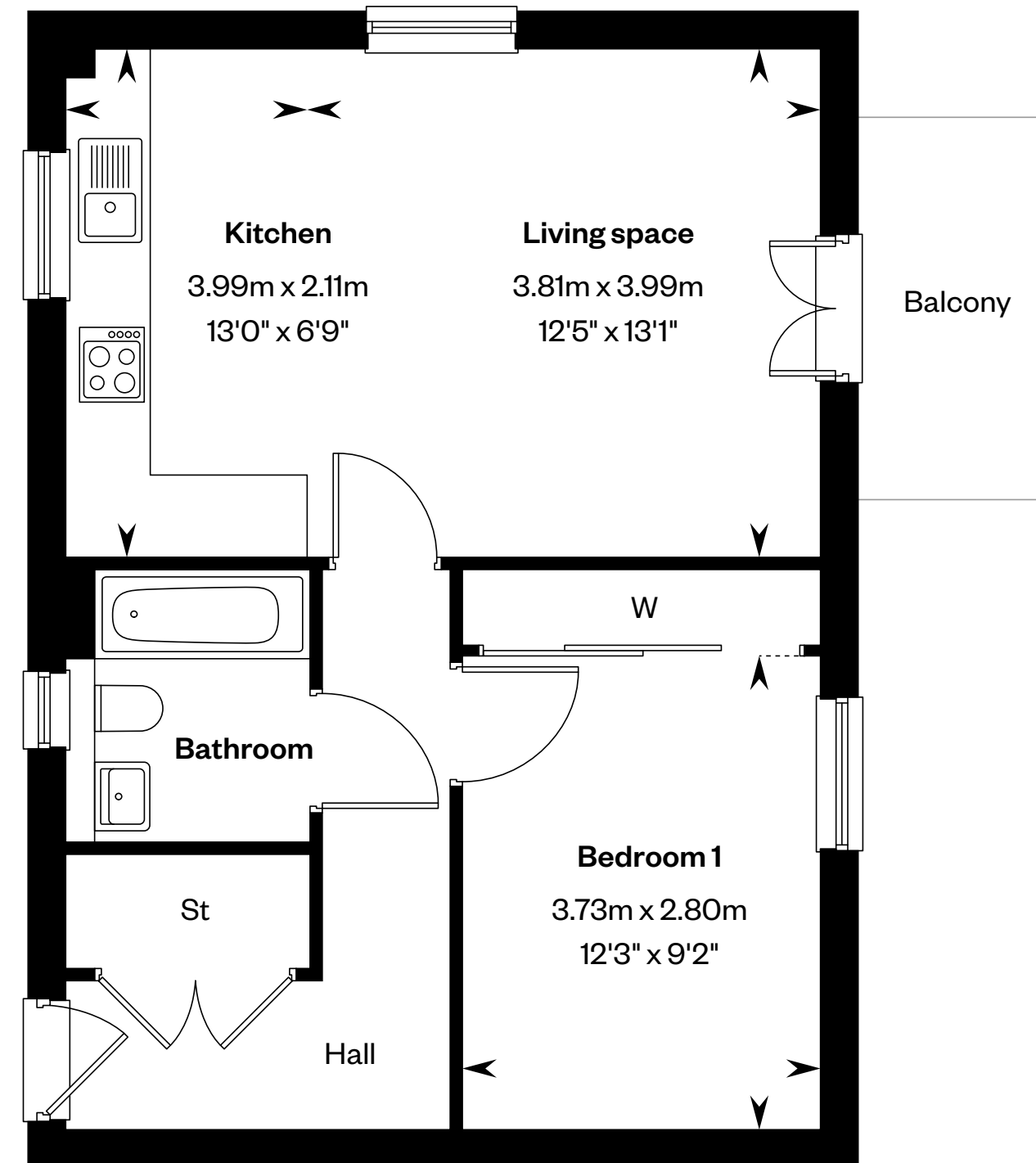


First floor



Ground floor

CA Communal area



Please ask your Sales Consultant for further details. St: Store cupboard. W: Wardrobe.

**IMPORTANT NOTICE TO CUSTOMERS:** The Consumer Protection from Unfair Trading Regulations 2008. Cala Homes (Cotswolds) Limited operates a policy of continual product development and the specifications outlined in this brochure are indicative only. The computer generated images and photographs do not necessarily represent the actual finishings/elevation or treatments, landscaping, furnishings and fittings at this development. Information contained is accurate at date of publication on 15.01.25. See the main brochure for the full Consumer Protection statement.