



**JORDANHILL**  
PARK

# **CHESTNUT** COLLECTION

THE HONOURS APARTMENTS



**JORDANHILL**  
PARK



## INTRODUCTION

# A HOME FOR ALL SEASONS

Jordanhill Park is a truly unique development that gives the best of city living.

Set in acres of beautiful parkland, and just a stone's throw from Glasgow city centre, this historic site is the perfect place for life to flow in an environment that will continue to grow.

VISION

A VIEW THAT GROWS WITH YOU



Designed by award-winning architects 7N, Jordanhill Park will maintain the Edwardian look and feel of the local community while offering a wide choice of contemporary homes.

Its neo-classical entrance lobby, reminiscent of large residential buildings in New York of the same period, will create a wonderfully elegant entrance

**“Jordanhill Park will retain its woodland setting, with around a third of the development remaining as open space that protects the site’s historic parkland.”**

At the heart of the development is the striking B-listed David Stow building, which is being converted into luxury apartments created from its former teaching spaces.

while its design around two central courtyards, will deliver superb views of the surrounding landscape and beyond.

New public paths, cycle ways and children’s play areas will complement the innovative design of the development.



Enjoying clever design features and situated in parkland close to the urban attractions of Glasgow's sought-after West End, Jordanhill Park has something to offer everyone.

The development is within reach of many cosmopolitan cafes, restaurants and

Families are also catered for, with numerous primary and secondary schools in the vicinity, including some of Glasgow's highly desirable private schools. Several of the city's most popular parks, such as Victoria Park, are nearby, providing an abundance of entertainment for little ones and opportunities to enjoy the outdoors.

**“Close to the urban attractions of Glasgow's sought-after West End, Jordanhill Park has something to offer everyone.”**

bars while the city centre is also in close proximity for those who wish to explore Glasgow's many art galleries, museums, parks and renowned retail offering. Glasgow's Buchanan Street, known as the Style Mile, is ranked as being amongst the UK's top shopping locations.

Jordanhill Park is within walking distance of the train stations and bus routes whilst also being close to major road networks, providing ease of access for commuters and leisure enthusiasts alike.

LIFESTYLE

**LIFE AT  
JORDANHILL PARK**

## INTERIORS

# BRINGING THE OUTDOORS IN

The wonderful green space of the Jordanhill parkland provides the inspiration for the unique and stylish interiors found in every Jordanhill Park home.

Our bespoke combination of open plan living and selective use of natural materials reinforces connections to the leafy surroundings, whilst also providing an impressive space that's sure to compliment modern day life.

Jordanhill Park has been thoughtfully designed to encourage a natural life of balance and is the perfect place to call home.





JORDANHILL PARK

# CHESTNUT COLLECTION

The Honours Apartments



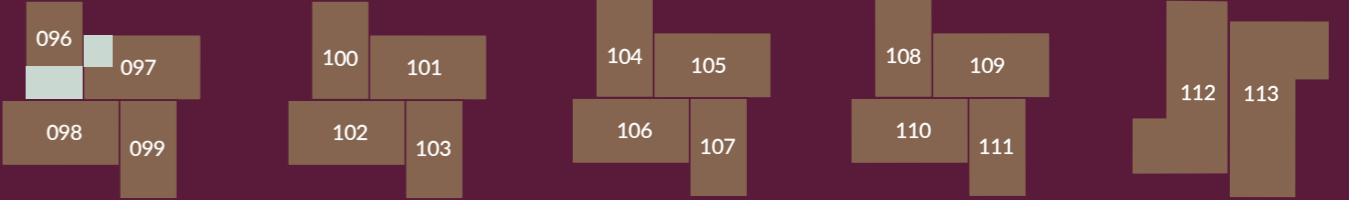




JORDANHILL PARK

# CHESTNUT COLLECTION

The Honours Apartments



0

- 96 Alpine
- 97 Beaumont
- 98 Farrel
- 99 Garret

1

- 100 Dante
- 101 Connel
- 102 Farrel
- 103 Garret

2

- 104 Dante
- 105 Connel
- 106 Farrel
- 107 Garret

3

- 108 Dante
- 109 Connel
- 110 Farrel
- 111 Garret

4

- 112 Mulberry
- 113 Saffron

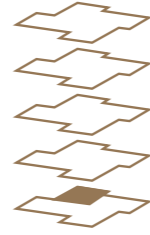
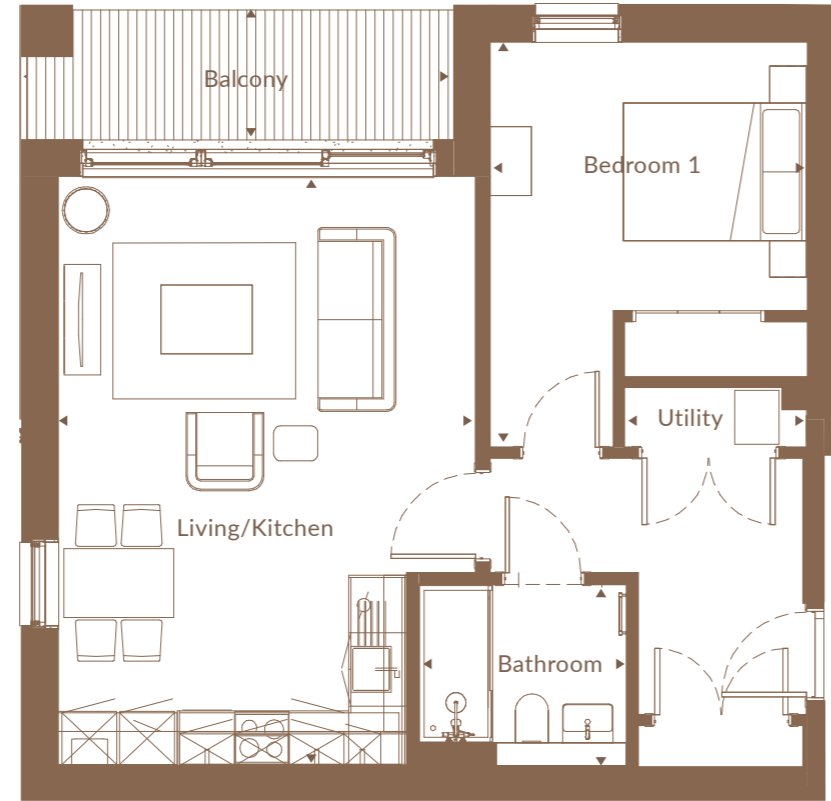
# ALPINE

## One bed apartment

The Honours Apartments -96

Space	Metres	Feet/Inches
Living /Kitchen	4.6m x 6.4m	15' 0" x 21' 1"
Bedroom 1	3.5m x 4.4m	11' 5" x 14' 6"
Bathroom	2.3m x 2.0m	7' 5" x 6' 6"
Utility	2.0m x 0.7m	6' 6" x 2' 2"
Balcony	4.7m x 1.4m	15' 4" x 4' 8"

Total sq ft  
624 sq ft



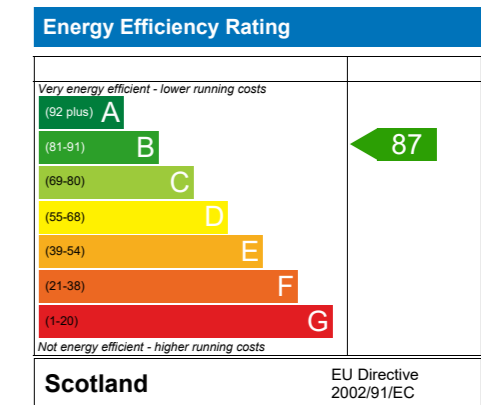
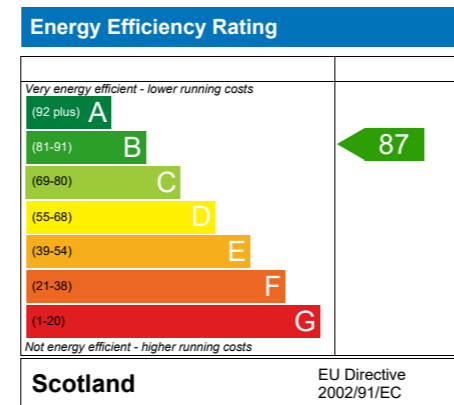
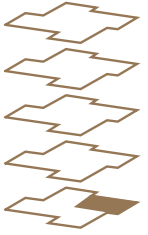
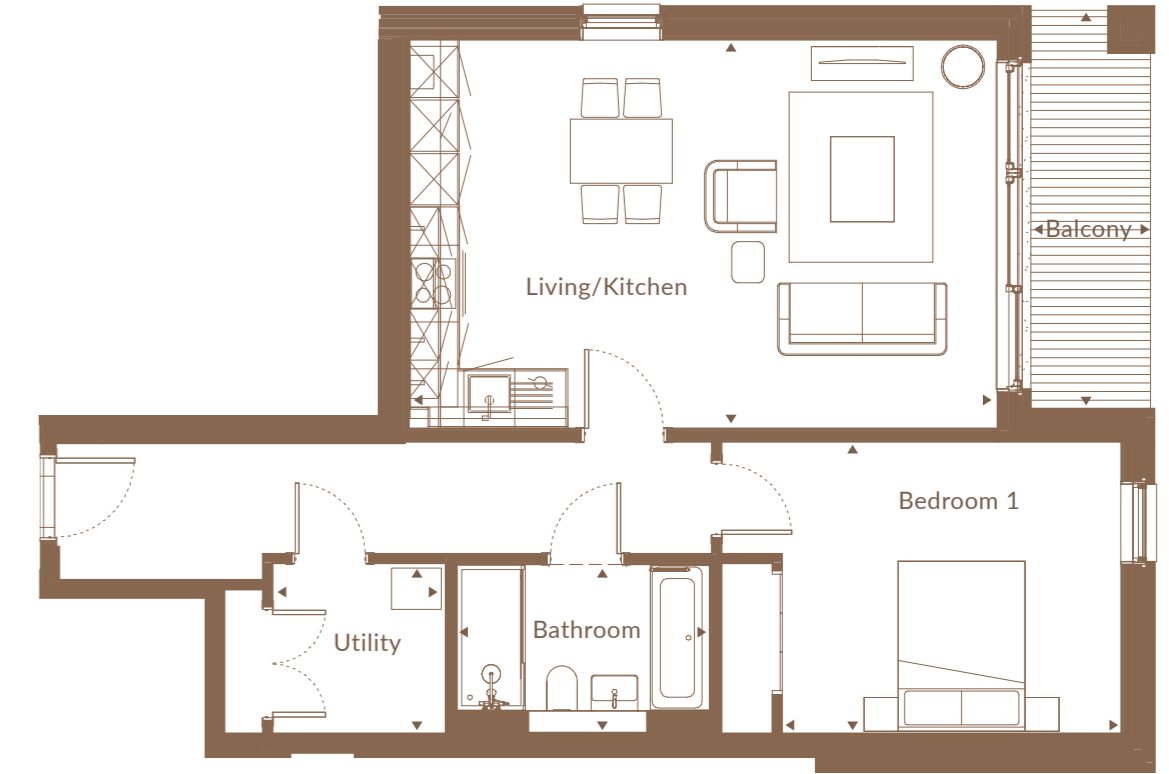
# BEAUMONT

## One bed apartment

The Honours Apartments -97

Space	Metres	Feet/Inches
Living /Kitchen	4.6m x 6.9m	15' 0" x 22' 9"
Bedroom 1	4.0m x 3.4m	13' 1" x 11' 3"
Bathroom	3.0m x 2.0m	9' 10" x 6' 6"
Utility	2.0m x 2.0m	6' 7" x 6' 7"
Balcony	4.7m x 1.4m	15' 4" x 4' 8"

Total sq ft  
781 sq ft



# CONNEL

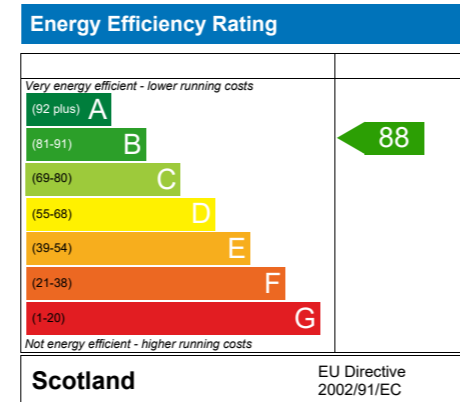
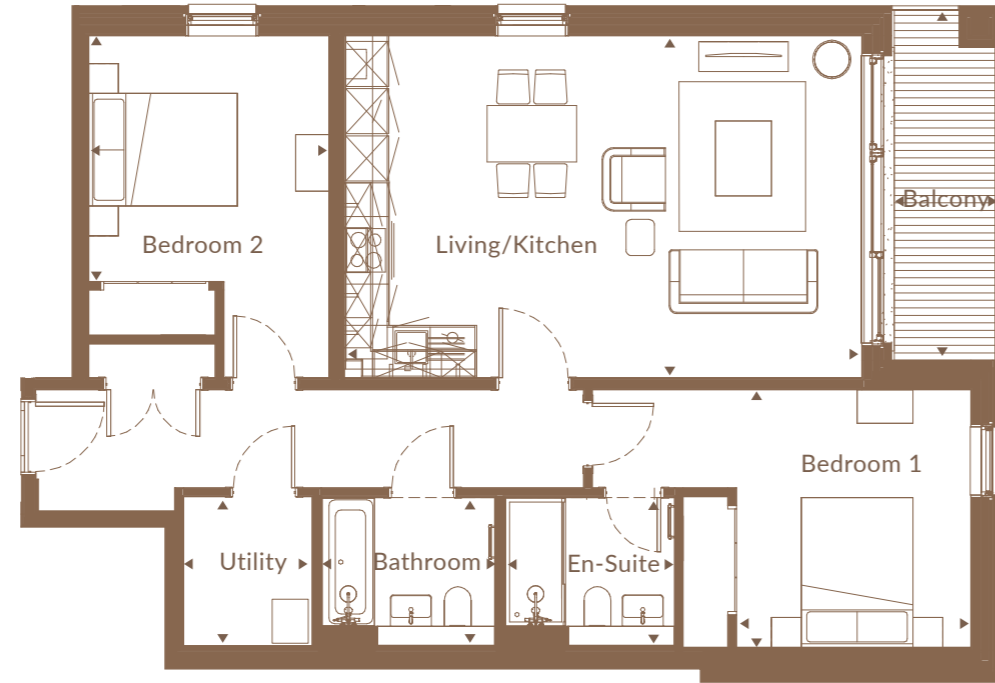
## Two bed apartment

The Honours Apartments -  
101, 105, 109

Space	Metres	Feet/Inches
Living /Kitchen	7.0m x 4.6m	22' 10" x 15' 0"
Bedroom 1	3.4m x 3.2m	11' 3" x 10' 4"
En-Suite	2.3m x 2.0m	7' 6" x 6' 6"
Bedroom 2	3.3m x 3.2m	10' 9" x 10' 7"
Bathroom	2.3m x 2.0m	7' 8" x 6' 6"
Utility	2.0m x 1.7m	6' 6" x 5' 8"
Balcony	4.7m x 1.4m	15' 4" x 4' 7"

Total sq ft

957 sq ft



# DANTE

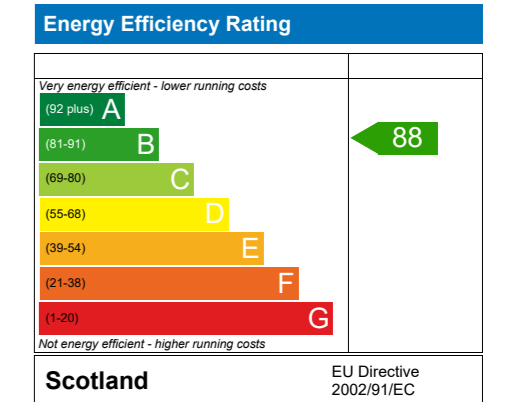
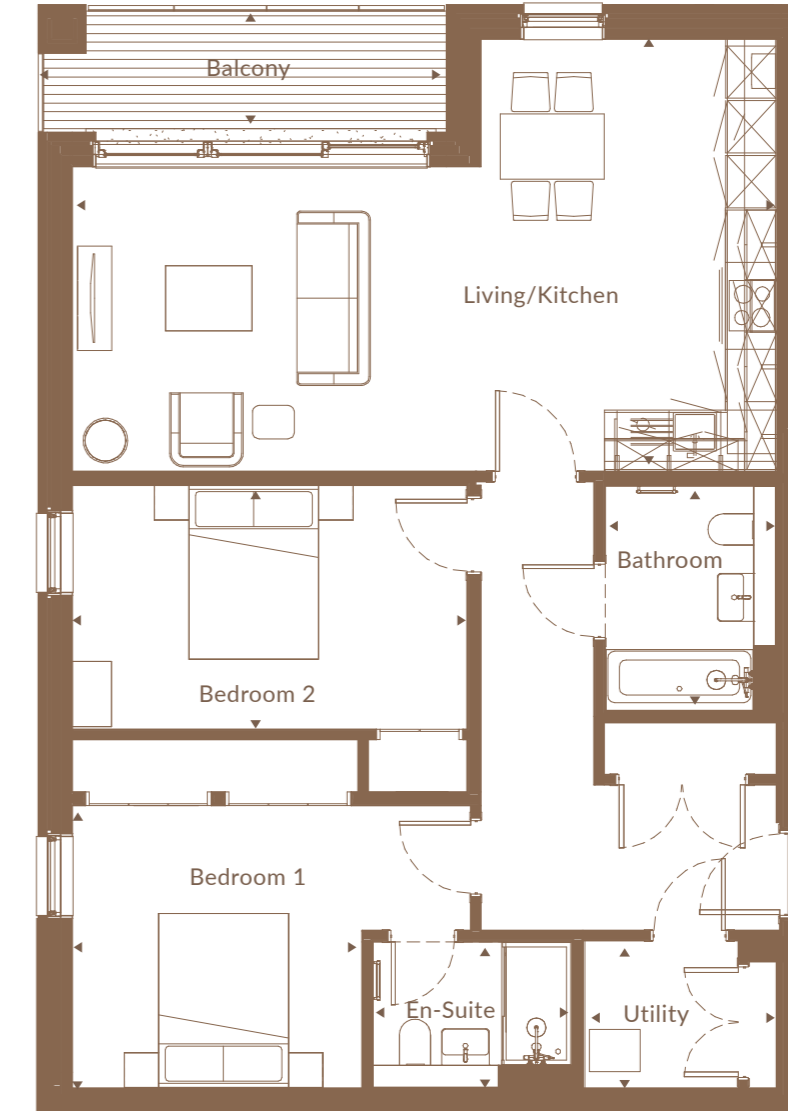
## Two bed apartment

The Honours Apartments -  
100, 104, 108

Space	Metres	Feet/Inches
Living /Kitchen	8.2m x 5.0m	26' 9" x 16' 3"
Bedroom 1	3.2m x 3.3m	10' 8" x 11' 0"
En-Suite	1.7m x 2.3m	5' 5" x 7' 7"
Bedroom 2	2.8m x 4.6m	9' 2" x 15' 0"
Bathroom	2.6m x 2.0m	8' 6" x 6' 6"
Utility	1.8m x 1.7m	5' 11" x 5' 7"
Balcony	4.7m x 1.4m	15' 4" x 4' 7"

Total sq ft

987 sq ft



# FARREL

## Three bed apartment

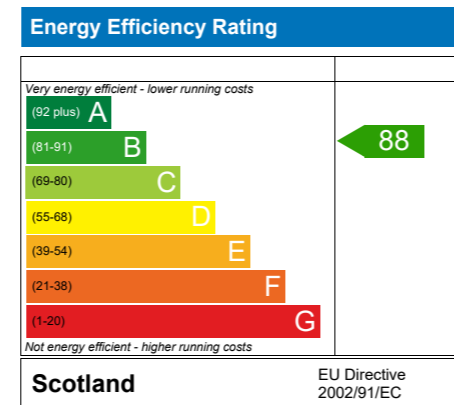
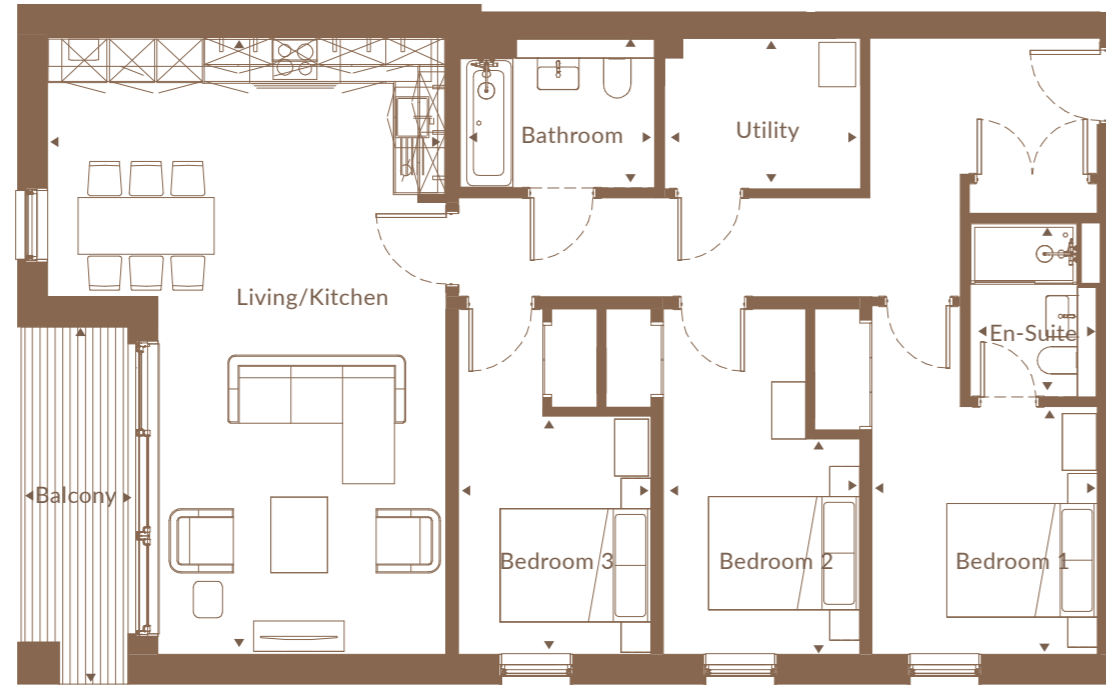
The Honours Apartments -  
98, 102, 106, 110

Space	Metres	Feet/Inches
Living/Kitchen	5.3m x 8.1m	17' 4" x 26' 9"
Bedroom 1	3.3m x 3.0m	10' 9" x 9' 10"
En-Suite	2.3m x 1.7m	7' 7" x 5' 6"
Bedroom 2	2.8m x 2.6m	9' 4" x 8' 6"
Bedroom 3	3.1m x 2.6m	10' 4" x 8' 4"
Bathroom	2.0m x 2.6m	6' 6" x 8' 6"
Utility	2.0m x 2.6m	6' 6" x 8' 6"
Balcony	4.7m x 1.4m	15' 6" x 4' 8"

### Total sq ft

1143 sq ft

\*Plot 98 is 1149 sq ft



# GARRET

## Three bed apartment

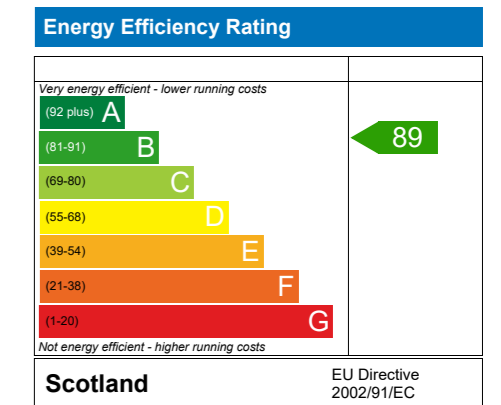
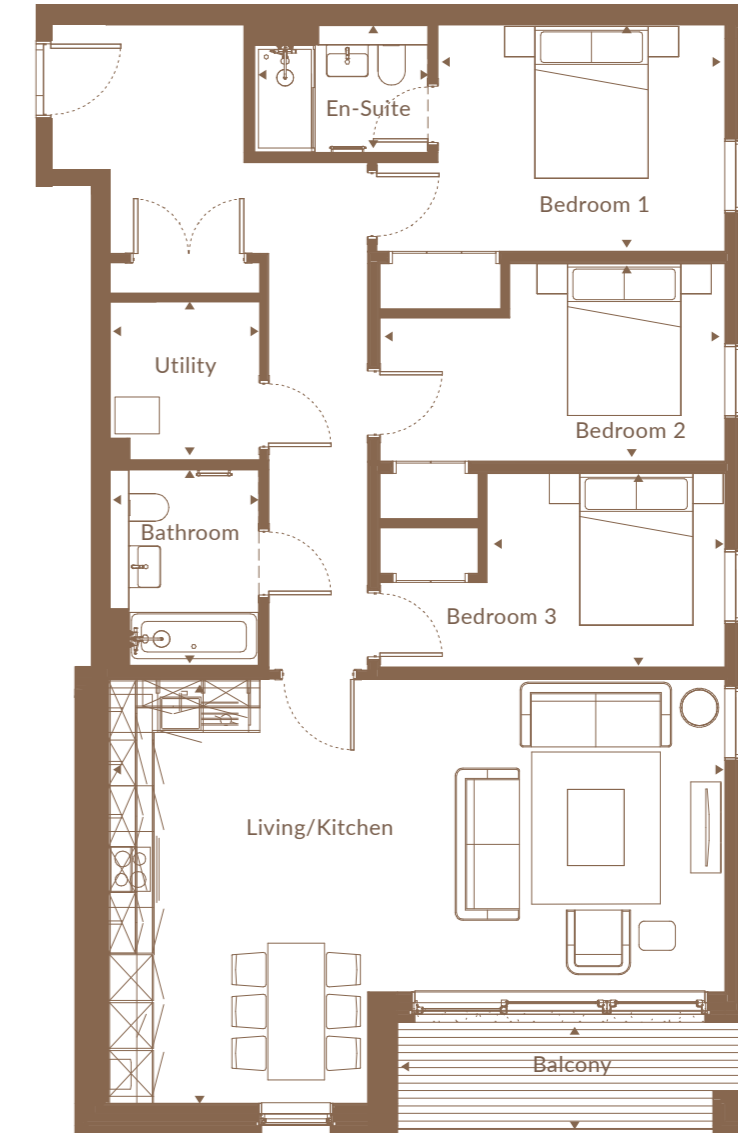
The Honours Apartments -  
99, 103, 107, 111

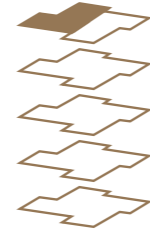
Space	Metres	Feet/Inches
Living/Kitchen	5.6m x 8.2m	18' 4" x 26' 9"
Bedroom 1	3.8m x 3.0m	12' 6" x 9' 9"
En-Suite	1.7m x 2.3m	5' 6" x 7' 7"
Bedroom 2	4.5m x 2.6m	14' 8" x 8' 6"
Bedroom 3	3.1m x 2.6m	10' 4" x 8' 4"
Bathroom	2.6m x 2.0m	8' 6" x 6' 6"
Utility	2.1m x 2.0m	6' 6" x 6' 10"
Balcony	4.7m x 1.1m	15' 6" x 4' 8"

### Total sq ft

1187 sq ft\*

\*Plot 99 is 1170sqft





# MULBERRY

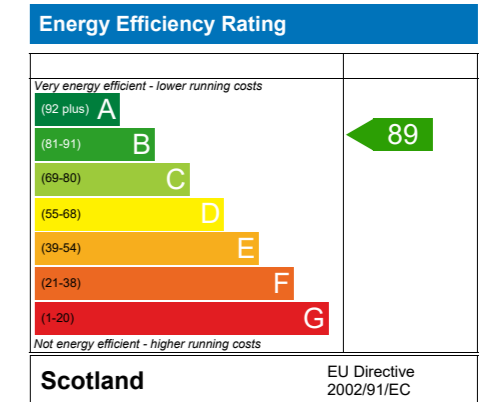
## Three bed Penthouse apartment

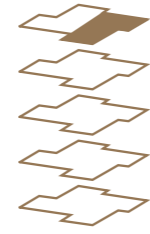
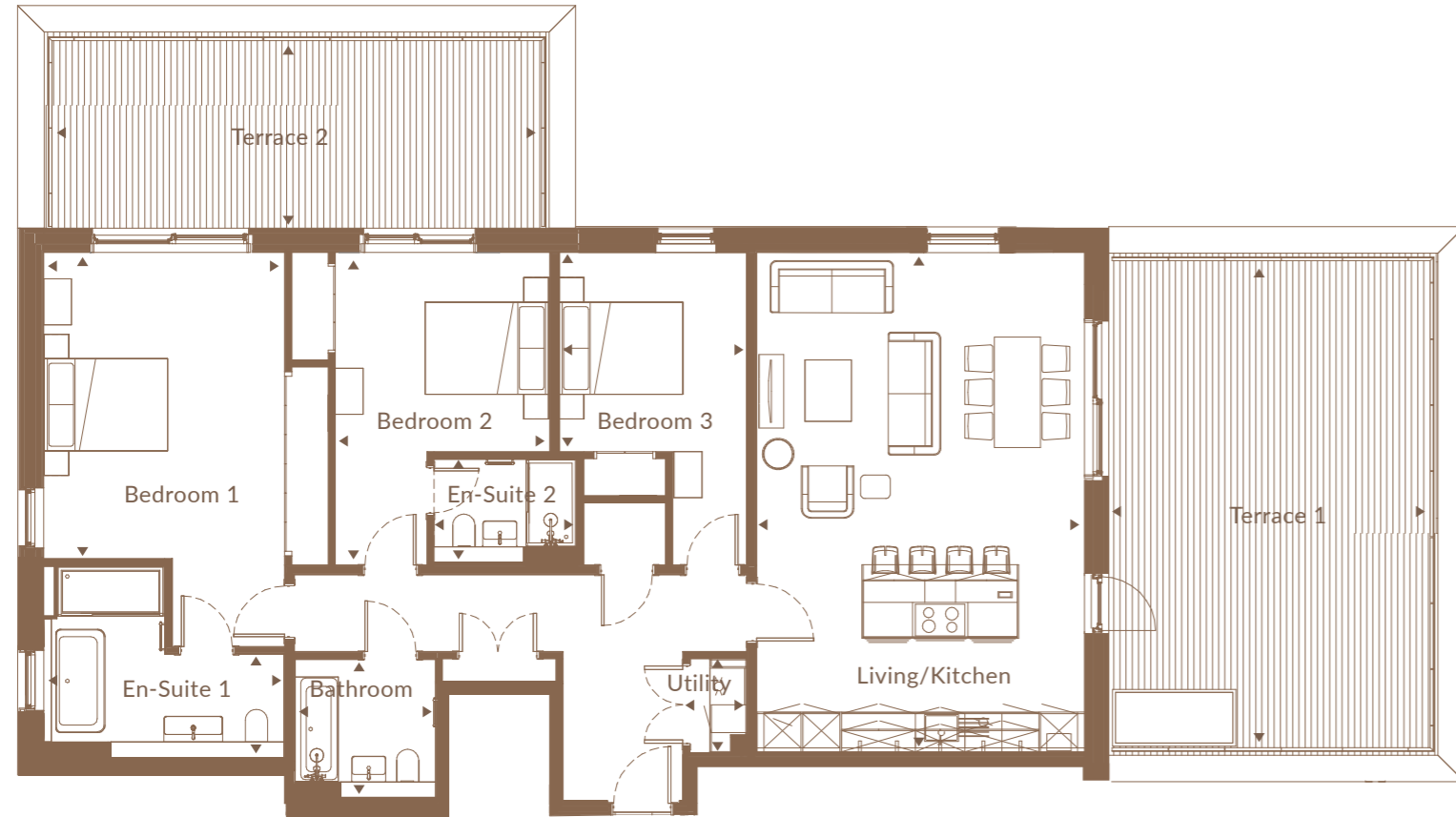
The Honours Apartments -  
112

Space	Metres	Feet/Inches
Living/Kitchen	5.2m x 8.1m	17' 0" x 26' 8"
Bedroom 1	5.8m x 3.9m	19' 0" x 12' 10"
Ensuite 1	3.9m x 2.1m	12' 10" x 6' 11"
Bedroom 2	3.5m x 2.7m	11' 5" x 8' 9"
Ensuite 2	2.3m x 1.7m	7' 6" x 5' 6"
Bedroom 3	3.2m x 2.7m	10' 4" x 8' 11"
Bathroom	2.3m x 2.0m	7' 8" x 6' 6"
Utility	1.5m x 2.0m	4' 11" x 6' 6"
Terrace 1	7.9m x 5.2m	26' 0" x 17' 1"
Terrace 2	7.9m x 3.1m	26' 0" x 10' 0"

Total sq ft

1485 sq ft





## SAFFRON

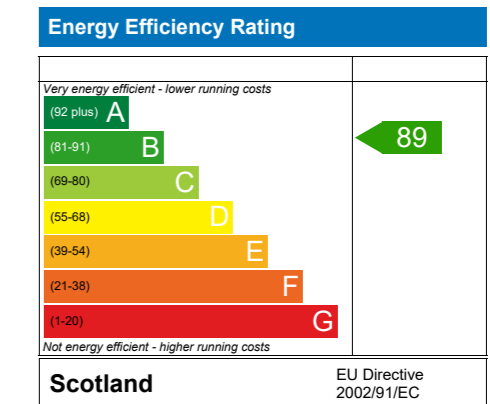
### Three bed Penthouse apartment

The Honours Apartments -  
113

Space	Metres	Feet/Inches
Living/Kitchen	5.3m x 8.1m	17' 5" x 26' 8"
Bedroom 1	5.0m x 3.9m	16' 4" x 12' 10"
Ensuite 1	3.9m x 1.8m	12' 9" x 5' 9"
Bedroom 2	3.3m x 3.5m	10' 10" x 11' 5"
Ensuite 2	2.3m x 1.7m	7' 6" x 5' 5"
Bedroom 3	3.2m x 3.0m	10' 8" x 9' 11"
Bathroom	2.3m x 2.2m	7' 5" x 7' 4"
Utility	1.5m x 0.9m	5' 0" x 3' 0"
Terrace 1	7.9m x 5.2m	26' 0" x 17' 1"
Terrace 2	7.9m x 3.1m	26' 0" x 10' 0"

Total sq ft

1497 sq ft



# CHESTNUT COLLECTION SPECIFICATION

## The Honours Apartments

### Kitchens

- Stylish German crafted kitchens by Nolte
- Laminate kitchen worktops with single bowl inset stainless steel sink with drainer (Alpine, Beaumont, Connel, Dante, Farrel and Garret only)
- Silestone kitchen worktops with single undermount stainless steel sink (Mulberry and Saffron only)
- Siemens Built-in single oven
- Siemens Built in oven/microwave combination oven (Mulberry and Saffron only)
- Siemens 4 zone induction hob (Alpine, Beaumont, Connel, Dante, Farrel and Garret only)
- Siemens 4 zone venting hob (Mulberry and Saffron only)
- Siemens integrated fridge freezer
- Siemens integrated dishwasher
- Bosch freestanding washer/dryer to utility cupboard
- Under unit LED lighting
- Quooker Fusion 3-in-1 boiling tap with flexi hose (Mulberry and Saffron only)

### Bathrooms

- Contemporary white sanitaryware from the Laufen range
- Contemporary slimline mixer taps to bathrooms
- Under sink Laufen vanity units to main bathroom and en-suite
- Full height wall tiling by Porcelanosa to bath and shower enclosure

- Thermostatic shower column with square shower to main bathroom and en-suites
- Thermostatic combination bath filler and handheld spray to baths
- Shaver sockets to all bathrooms and en-suite
- Chrome towel warmers to all bathrooms and en-suites
- Fitted mirror with demist pad above wash hand basin bathrooms and en-suites

### Decoration

- Internal walls and ceilings will be finished in covermatt white emulsion
- Pre-finished white pass doors internally
- Pre-finished grey pass doors internally (Mulberry and Saffron only)
- Contemporary lever style handles
- White matt finish skirting's and facings
- 2.6m floor to ceiling height (Alpine, Beaumont, Connel, Dante, Farrel and Garret only)\*
- 2.7m floor to ceiling height (Mulberry and Saffron only)

### Wardrobes

- Stylish sliding wardrobe doors with shelves and hanging rail as design dictates

\* Please note, a 2.5m ceiling height applies to the kitchen / living area of plots 108, 109, 110 & 111.

# CHESTNUT COLLECTION SPECIFICATION

## The Honours Apartments

### Heating & Electrical

- Underfloor heating system
- Master TV media plate in main lounge
- Communal satellite dish to apartments (connection required)
- Fully wired with CAT 6 cabling to data points in Lounge and Master Bedroom
- Ample power, TV and telephone points throughout
- USB & USBC charging points in selected rooms
- Brushed stainless steel sockets to kitchen - white elsewhere
- Featured downlights to kitchen, living area, bathroom and en-suite
- Solar panels to roof area providing sustainable energy

### Security

- Video door entry and access control system
- Intruder alarm system to ground floor apartments only
- Mains powered smoke detectors
- Battery powered CO2 detectors
- Motion sensor lighting to corridors and stairwells

### External and Common Areas

- NorDan Aluminium clad sliding terrace / balcony door with timber finish internally to lounge and kitchen area
- NorDan Aluminium clad double glazed windows Pre finished white internally
- Aluminium decking to external terrace / balcony areas
- Allocated private external parking
- Secure internal cycle store area with individual bike racks
- Lift access to all floors

### Factor

- An annual factors fee will be payable by all residents at Jordanhill Park. Please consult our Sales Consultant for full details
- All properties covered by 10 year Q Policy warranty



## ABOUT CALA

For almost 150 years, CALA has been a name synonymous with style, elegance and quality. Across the decades we have secured a firm foothold as one of the UK's premier homebuilders. With this highly coveted position comes responsibility, and so we take great pride in providing premium homes in some of the UK's most sought-after areas.

CALA operates nationally through eight regional businesses, three in Scotland covering the principal cities of Edinburgh, Glasgow and Aberdeen, with our Scottish headquarters in Edinburgh, four within the Home Counties, including our southern headquarters at Beaconsfield in Buckinghamshire, and an eighth in the Midlands.

From conservation area to brownfield development, we are driven by new challenges, selecting prime locations in which to build exceptional properties.

**IMPORTANT NOTICE TO CUSTOMERS:** The Consumer Protection from Unfair Trading Regulations 2008. CALA Homes (West) Limited operate a policy of continual product development and the specifications outlined in this brochure are indicative only. Any alterations to the specifications will be of equal or greater value and CALA reserves the right to implement changes to the specifications without warning. Whilst these particulars are prepared with all due care for the convenience of intending purchasers, the information is intended as a preliminary guide only. As with photographs/illustrations in this brochure, the display material in our customer reception is provided purely as a guide, indicating a typical style of a property. The computer generated images and photographs do not necessarily represent the actual finishings/elevation or treatments, furnishings and fittings at this development. Room measurements are approximate only. Floor plans, dimensions and specifications are correct at the time of print. The illustrated location map is a general guide only. For specific particulars, please speak to a CALA representative at the development for the most up-to-date information. Please note that distances and timings referred to in this brochure are approximate and sourced from Google Maps. For information relating to weather in the area of this development, please refer to the Meteorological Office ([www.metoffice.gov.uk](http://www.metoffice.gov.uk)). Nothing contained in this brochure shall constitute or form part of any contract. Information contained in this brochure is accurate at the time of going to press 16.04.19. CALA (West) Limited, registered in Scotland company number SC222577. Registered office: Johnstone House, 52-54 Rose Street, Aberdeen AB10 1HA: Agent of CALA Management Limited.

CALA continues to set standards, seeking out new directions in design, incorporating the very latest ideas in architecture and embracing cutting edge innovation. From a one bedroom apartment to a six-bedroom family mansion, we will always apply the same exacting standards of quality, craftsmanship and attention to detail, for which we are renowned.

With highly acclaimed developments throughout the country, CALA takes great care to ensure that we remain sensitive to the areas we develop, taking inspiration from our surroundings and creating properties with both poise and purpose, reflective of local history and habitat. CALA places ultimate emphasis on the needs of our customers, surpassing their expectations, for decades to come.

### Enquire about life at Jordanhill Park

- 📞 0141 319 8988
- 🌐 [www.jordanhillpark.com](http://www.jordanhillpark.com)
- ✉️ [jordanhillpark@cala.co.uk](mailto:jordanhillpark@cala.co.uk)

**CONSUMER  
CODE FOR  
HOME BUILDERS**





