

The Bargower

4 bedroom detached home

CALA



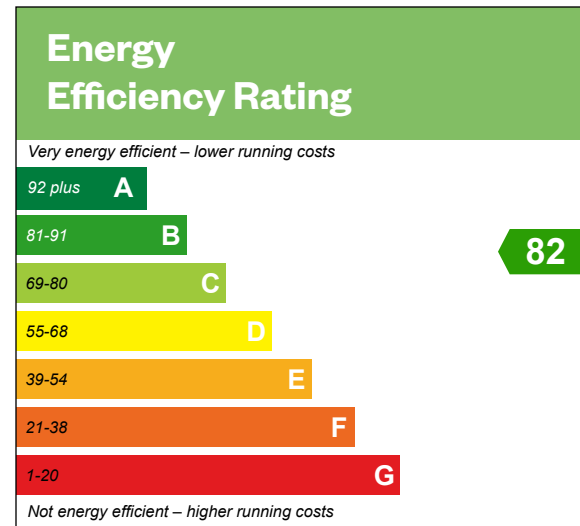
CGI - A typical Bargower

The Bargower

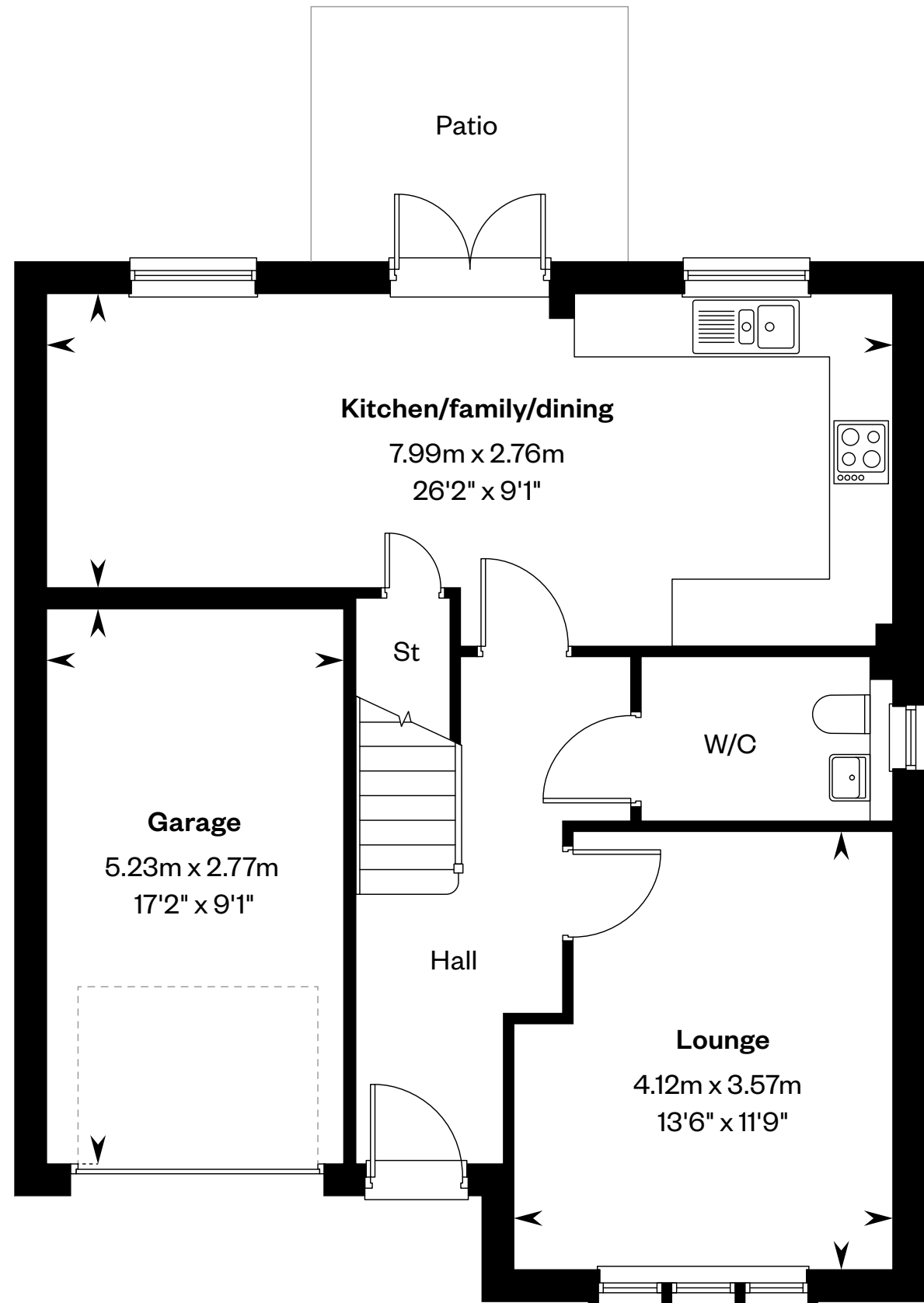
4 bedroom detached home

Plots 8 & 38 – as shown

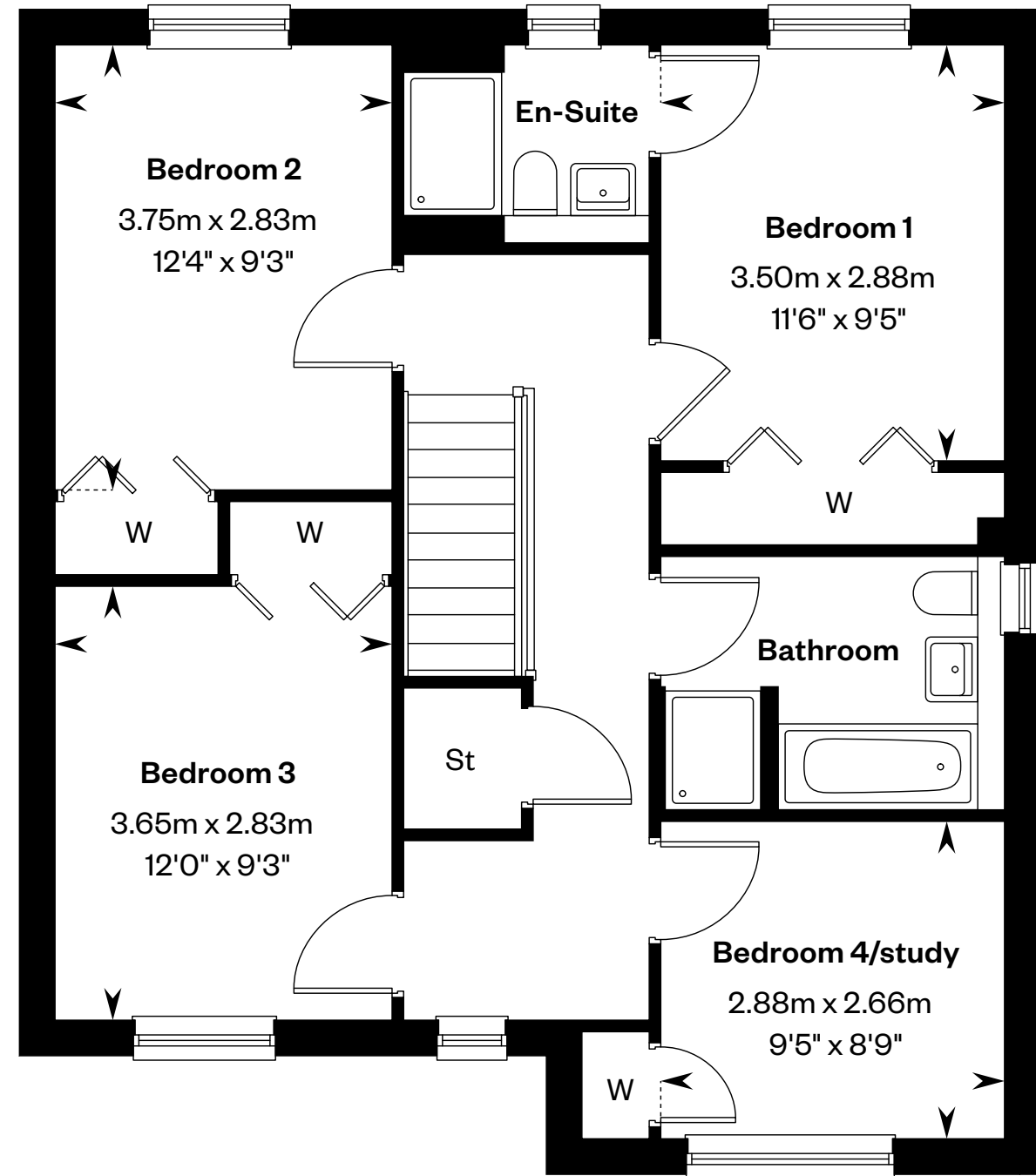
Plots 10 & 43 – handed



This is a Predicted Energy Assessment for properties that are incomplete. Once the property is completed, this rating will be updated and an official Energy Performance Certificate will be created for the property.



Ground floor



First floor

Please ask your Sales Consultant for further details. St: Store cupboard. W: Wardrobe.

IMPORTANT NOTICE TO CUSTOMERS: The Consumer Protection from Unfair Trading Regulations 2008. Cala Homes (North) Limited operates a policy of continual product development and the specifications outlined in this brochure are indicative only. The computer generated images and photographs do not necessarily represent the actual finishings/elevation or treatments, landscaping, furnishings and fittings at this development. Information contained is accurate at date of publication on 09.01.25. See the main brochure for the full Consumer Protection statement.

The Barrie

4 bedroom detached home

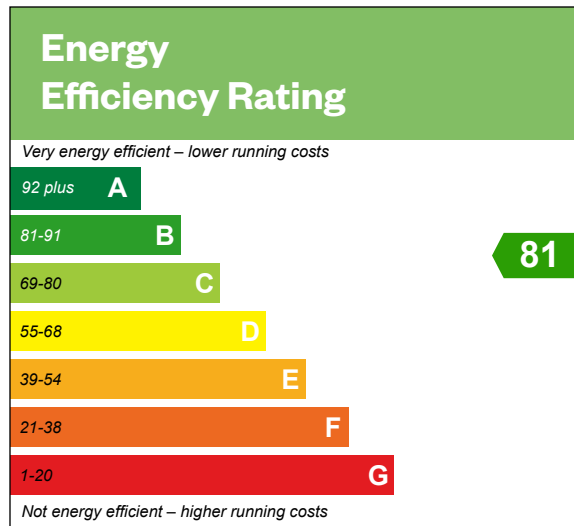


The Barrie

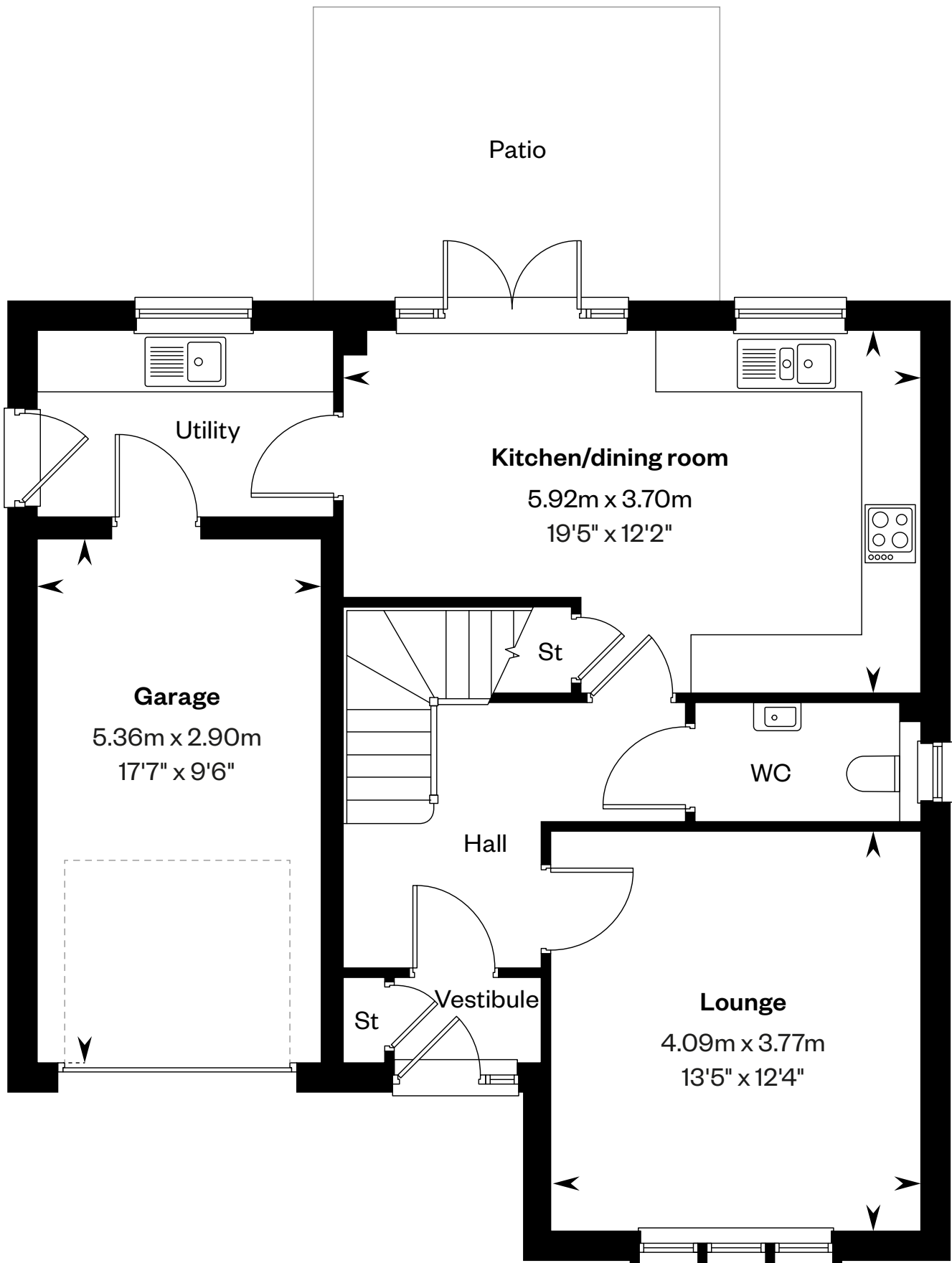
4 bedroom detached home

Plots 7 & 42 – as shown

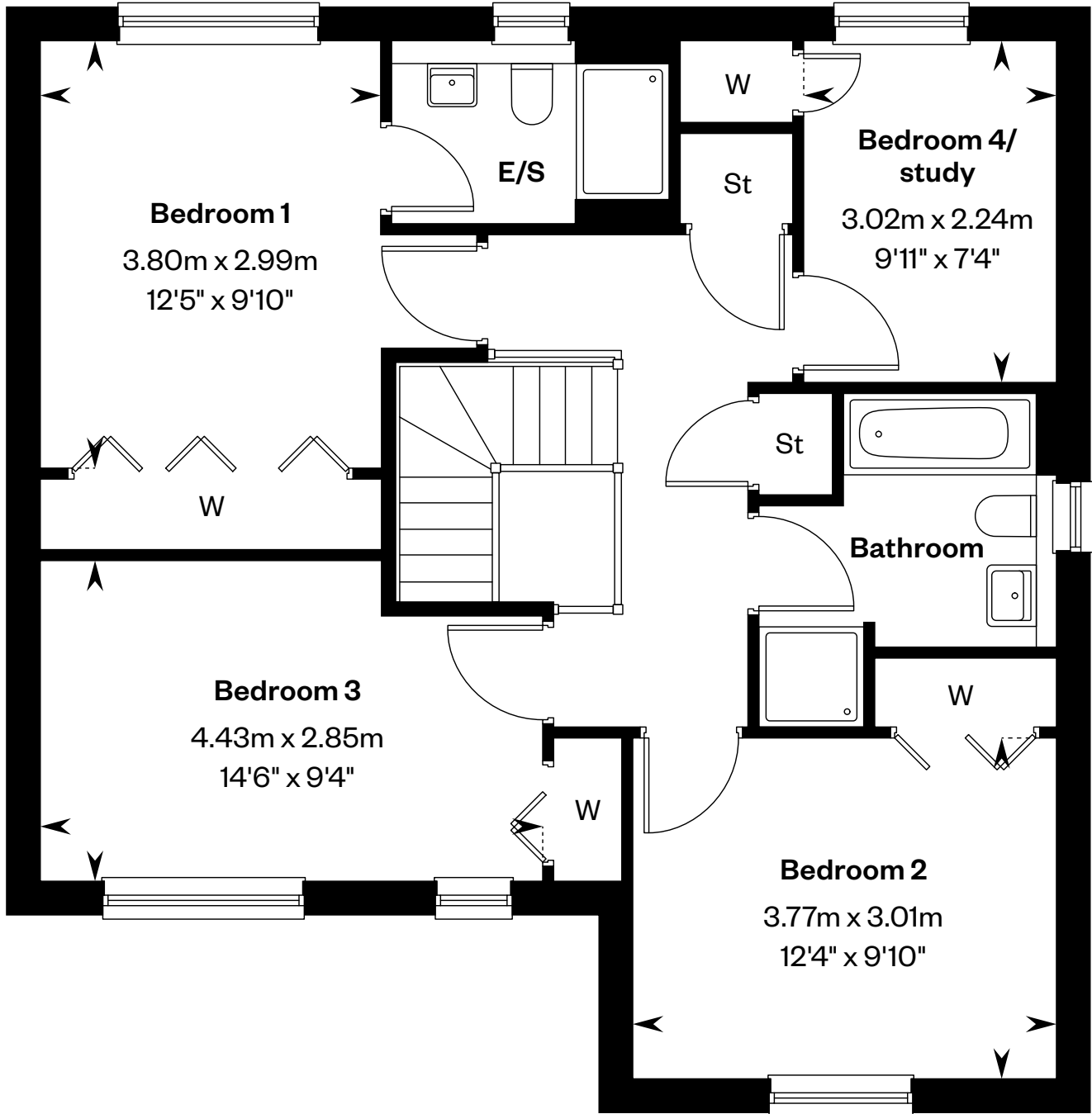
Plots 6, 9, 38 & 40 – handed



This is a Predicted Energy Assessment for properties that are incomplete. Once the property is completed, this rating will be updated and an official Energy Performance Certificate will be created for the property.



Ground floor



First floor

Please ask your Sales Consultant for further details. E/S: En-Suite. St: Store cupboard. W: Wardrobe.

IMPORTANT NOTICE TO CUSTOMERS: The Consumer Protection from Unfair Trading Regulations 2008. Cala Homes (North) Limited operates a policy of continual product development and the specifications outlined in this brochure are indicative only. The computer generated images and photographs do not necessarily represent the actual finishings/elevation or treatments, landscaping, furnishings and fittings at this development. Information contained is accurate at date of publication on 09.01.25. See the main brochure for the full Consumer Protection statement.

The Colville

4 bedroom detached home



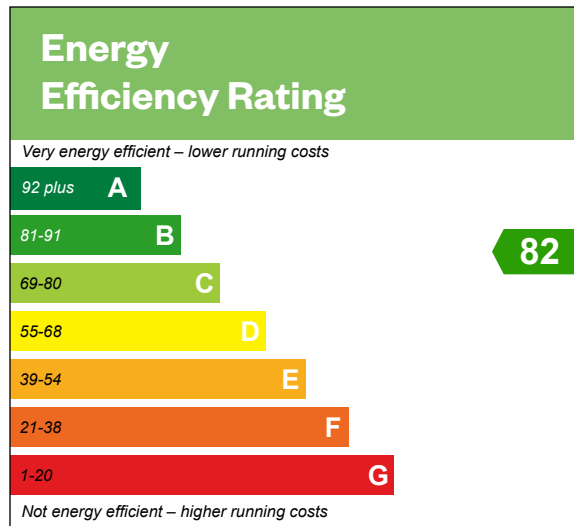
CGI - A typical Colville

The Colville

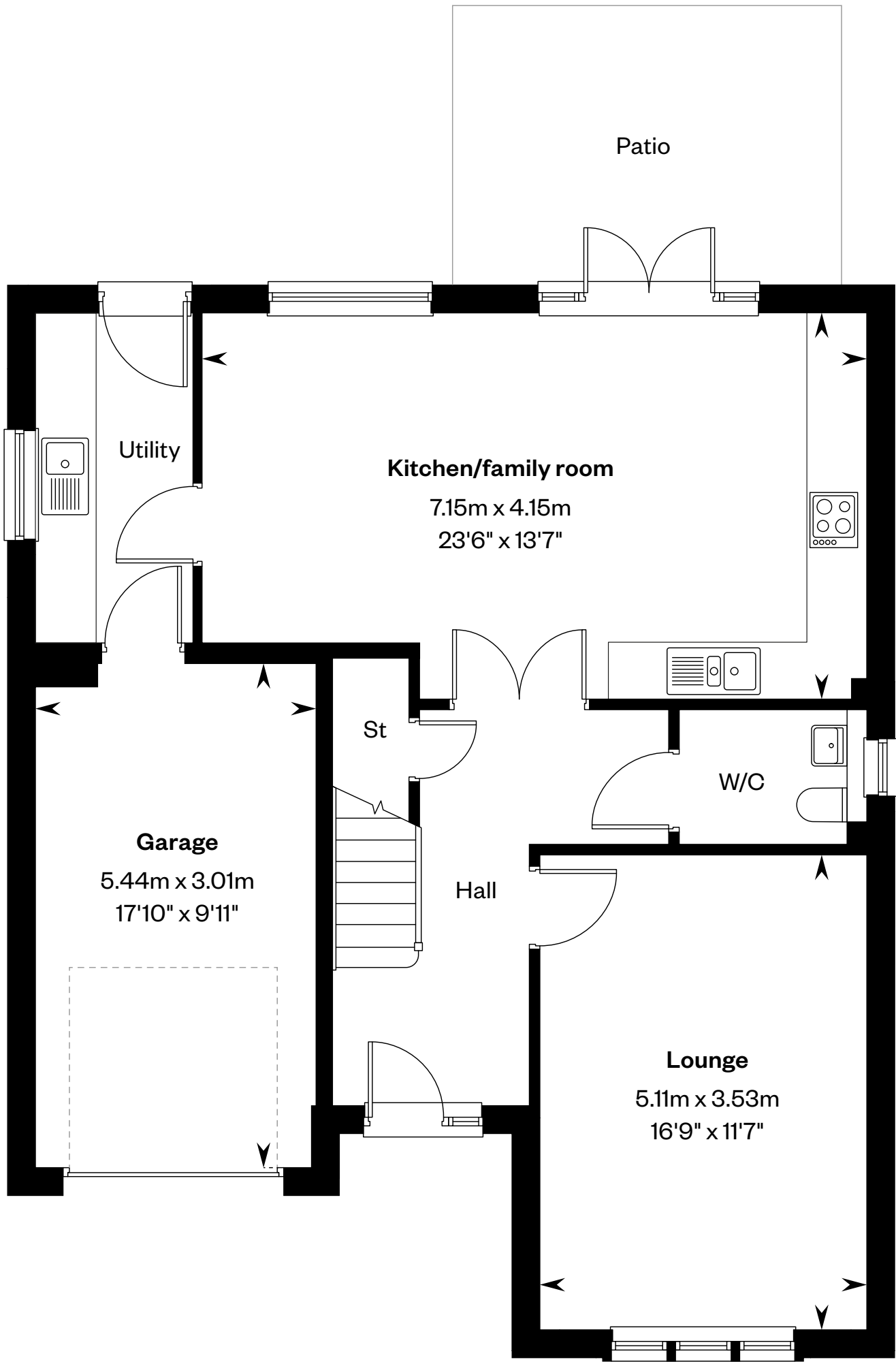
4 bedroom detached home

Plots 2, 5, 20 & 37 – as shown

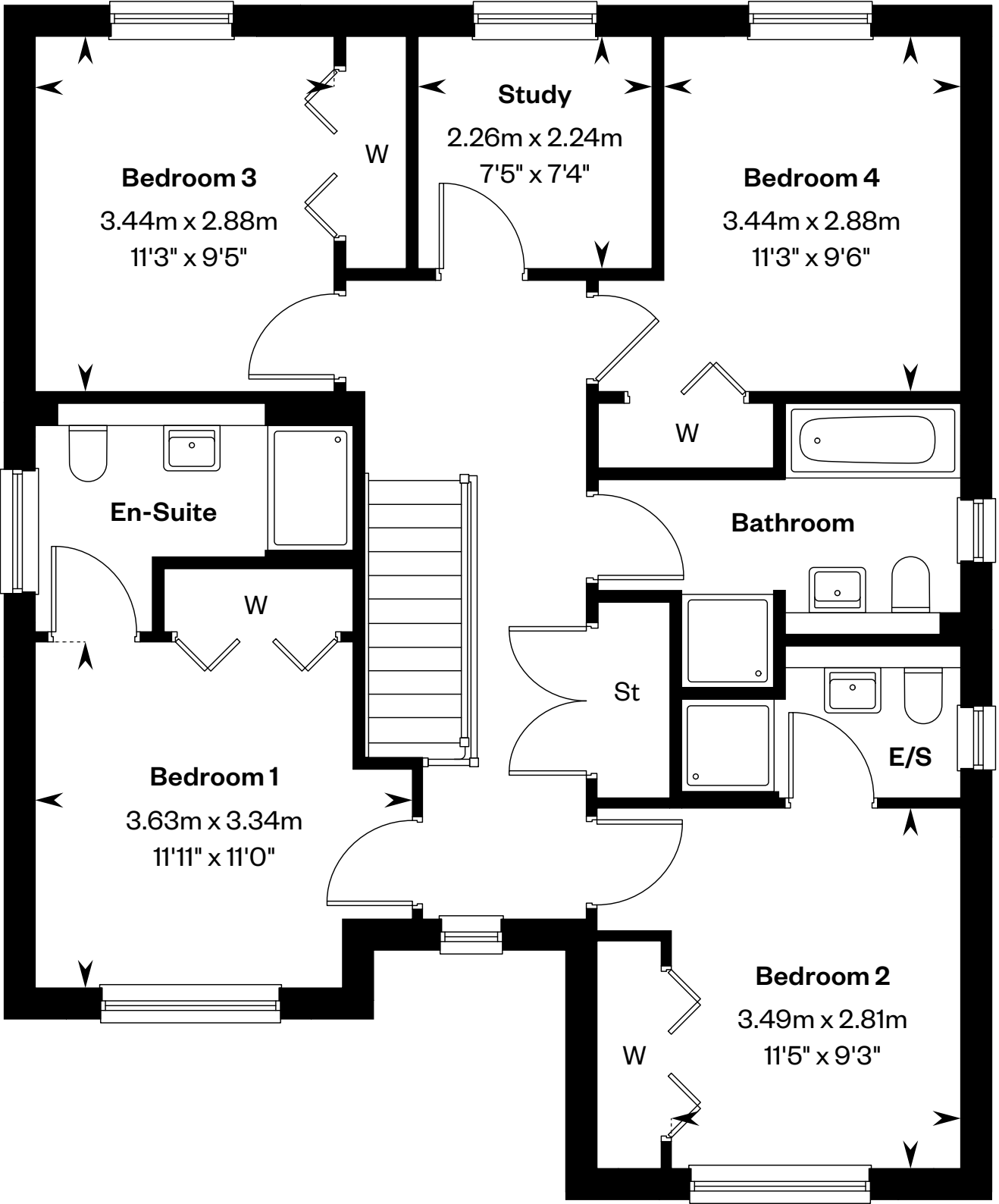
Plots 16, 18, 41 & 45 – handed



This is a Predicted Energy Assessment for properties that are incomplete. Once the property is completed, this rating will be updated and an official Energy Performance Certificate will be created for the property.



Ground floor



First floor

Please ask your Sales Consultant for further details. E/S: En-Suite. St: Store cupboard. W: Wardrobe.

IMPORTANT NOTICE TO CUSTOMERS: The Consumer Protection from Unfair Trading Regulations 2008. Cala Homes (North) Limited operates a policy of continual product development and the specifications outlined in this brochure are indicative only. The computer generated images and photographs do not necessarily represent the actual finishings/elevation or treatments, landscaping, furnishings and fittings at this development. Information contained is accurate at date of publication on 09.01.25. See the main brochure for the full Consumer Protection statement.

The Crichton

5 bedroom detached home

CALA



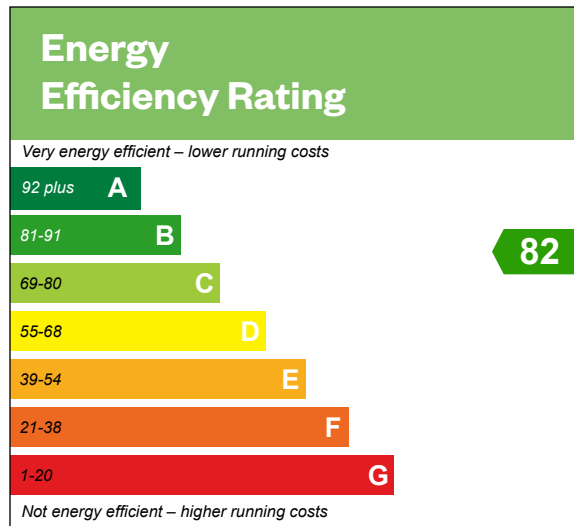
CGI - A typical Crichton

The Crichton

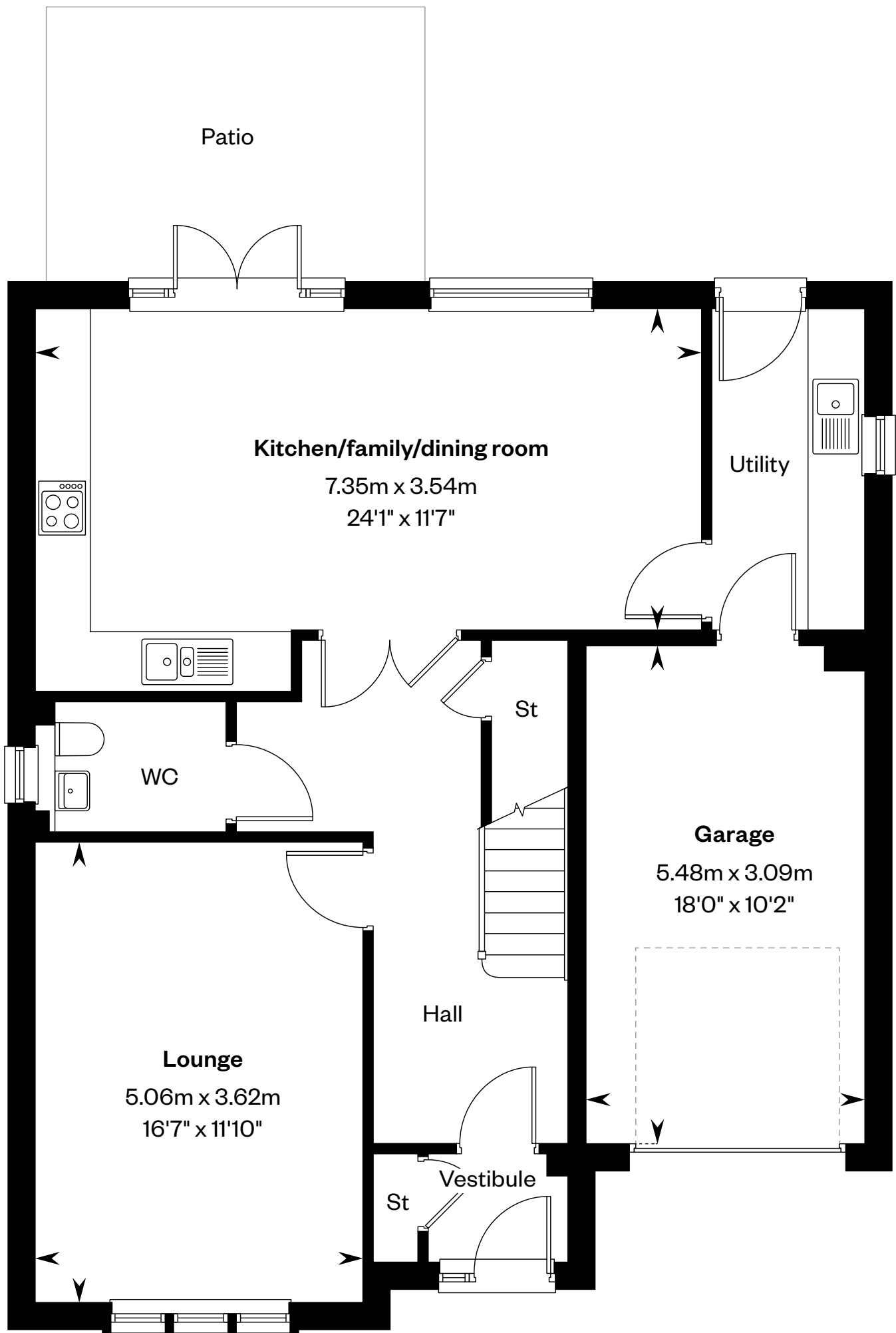
5 bedroom detached home

Plots 1, 3, 14, 36, 44, 47 & 49 – as shown

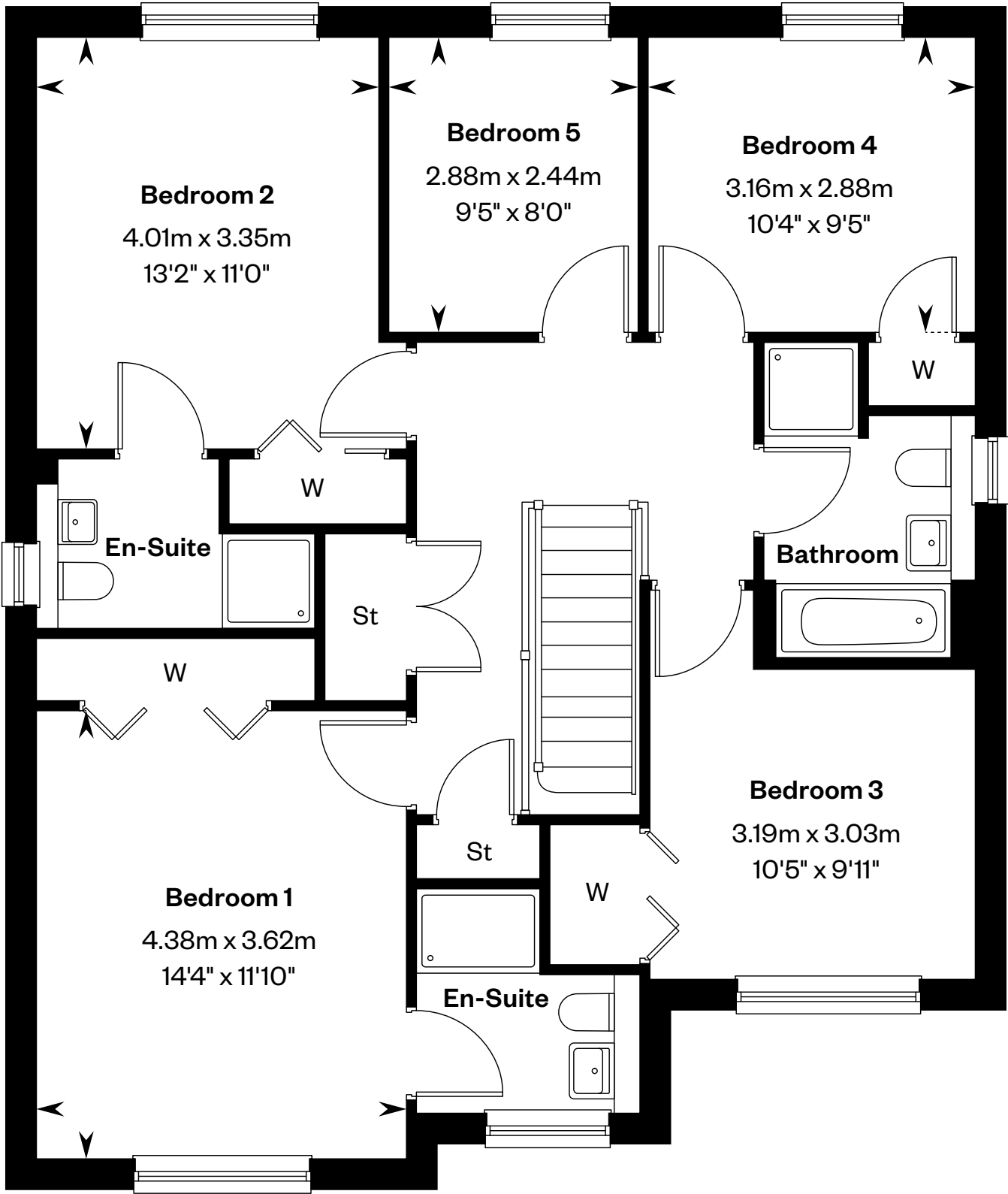
Plot 17 – as handed



This is a Predicted Energy Assessment for properties that are incomplete. Once the property is completed, this rating will be updated and an official Energy Performance Certificate will be created for the property.



Ground floor



First floor

Please ask your Sales Consultant for further details. St: Store cupboard. W: Wardrobe.

IMPORTANT NOTICE TO CUSTOMERS: The Consumer Protection from Unfair Trading Regulations 2008. Cala Homes (North) Limited operates a policy of continual product development and the specifications outlined in this brochure are indicative only. The computer generated images and photographs do not necessarily represent the actual finishings/elevation or treatments, landscaping, furnishings and fittings at this development. Information contained is accurate at date of publication on 09.01.25. See the main brochure for the full Consumer Protection statement.

The Dewar

5 bedroom detached home

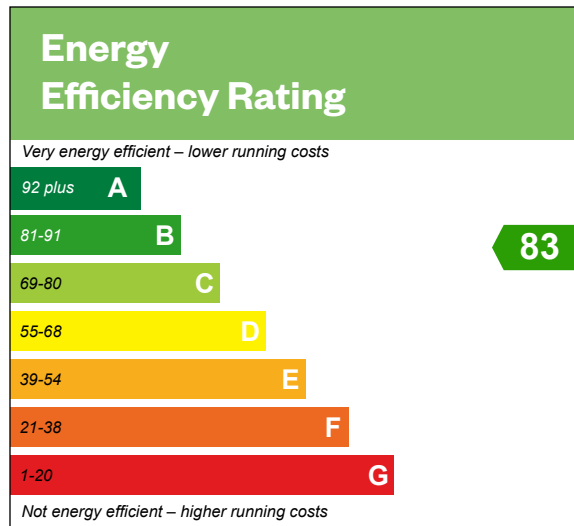


CGI - A typical Dewar

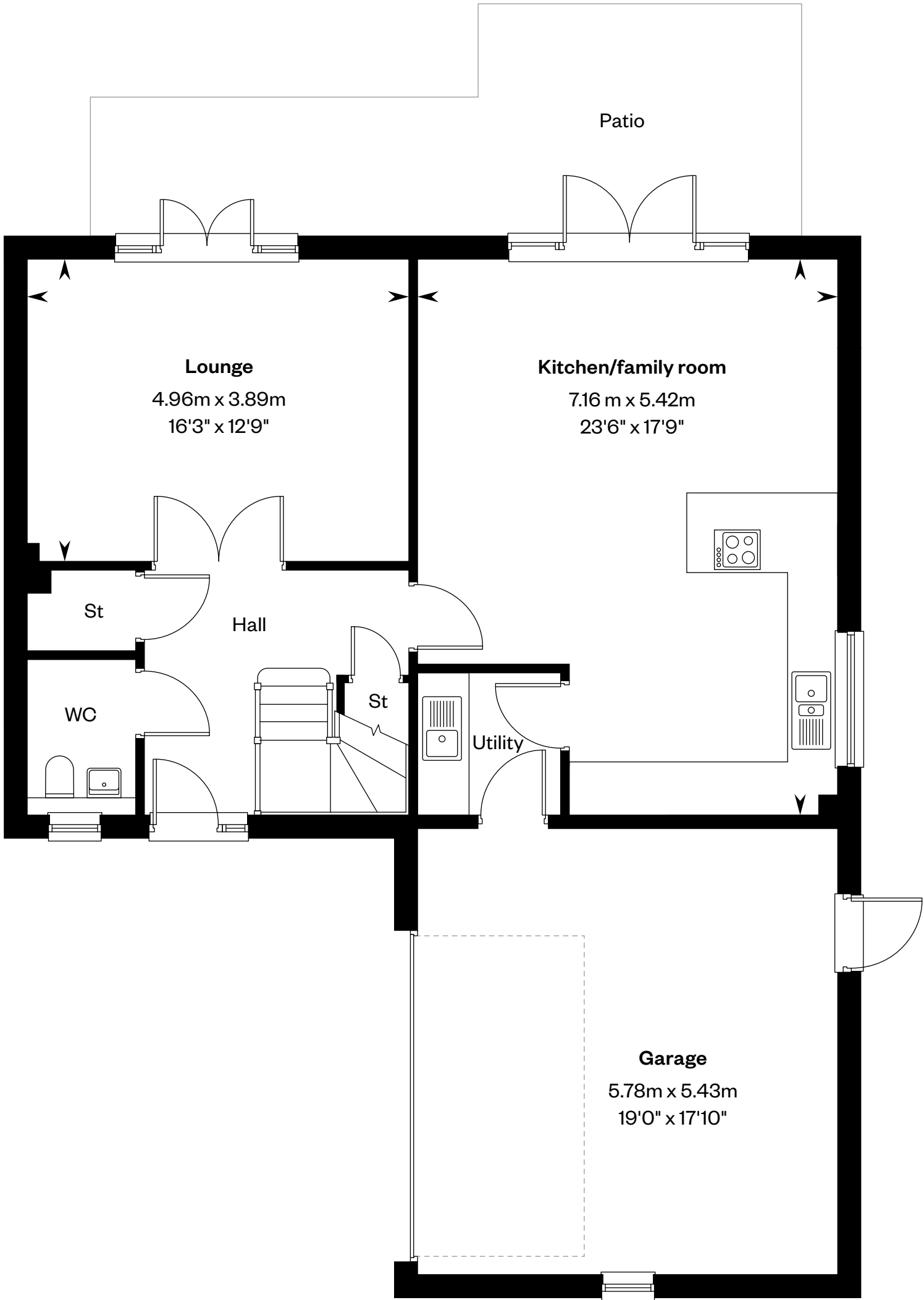
The Dewar

5 bedroom detached home

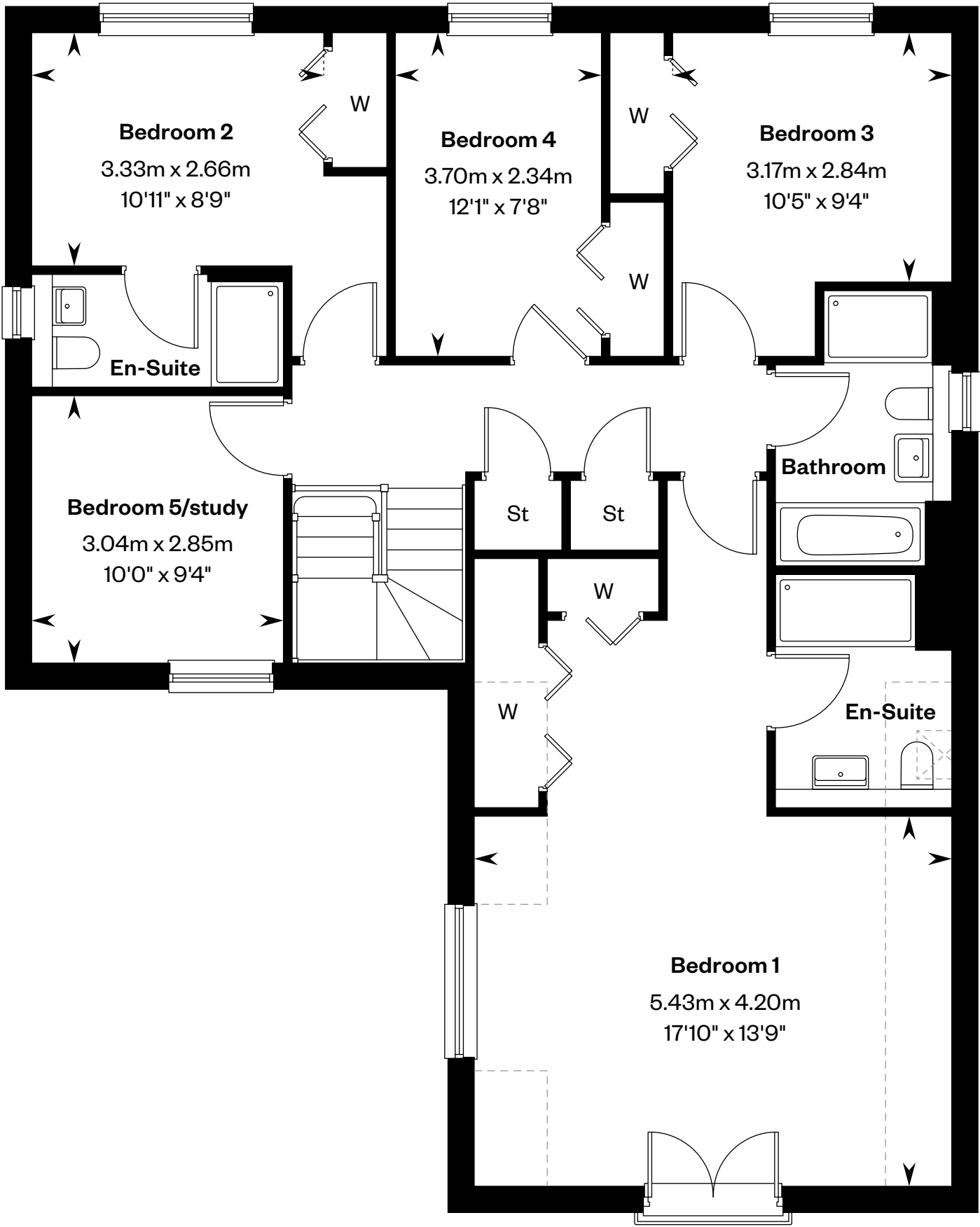
Plots 25 & 32 – as shown



This is a Predicted Energy Assessment for properties that are incomplete. Once the property is completed, this rating will be updated and an official Energy Performance Certificate will be created for the property.



Ground floor



First floor

Please ask your Sales Consultant for further details. St: Store cupboard. W: Wardrobe. : Roof light/velux window. - - - - : Dotted lines denote reduced head height.

IMPORTANT NOTICE TO CUSTOMERS: The Consumer Protection from Unfair Trading Regulations 2008. Cala Homes (North) Limited operates a policy of continual product development and the specifications outlined in this brochure are indicative only. The computer generated images and photographs do not necessarily represent the actual finishings/elevation or treatments, landscaping, furnishings and fittings at this development. Information contained is accurate at date of publication on 09.01.25. See the main brochure for the full Consumer Protection statement.

The Elliot

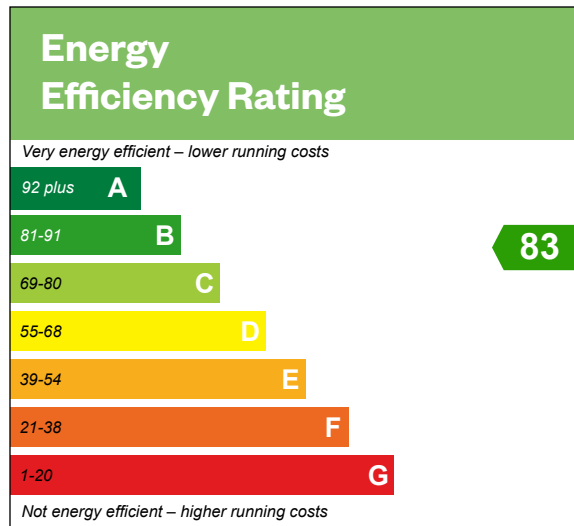
5 bedroom detached home



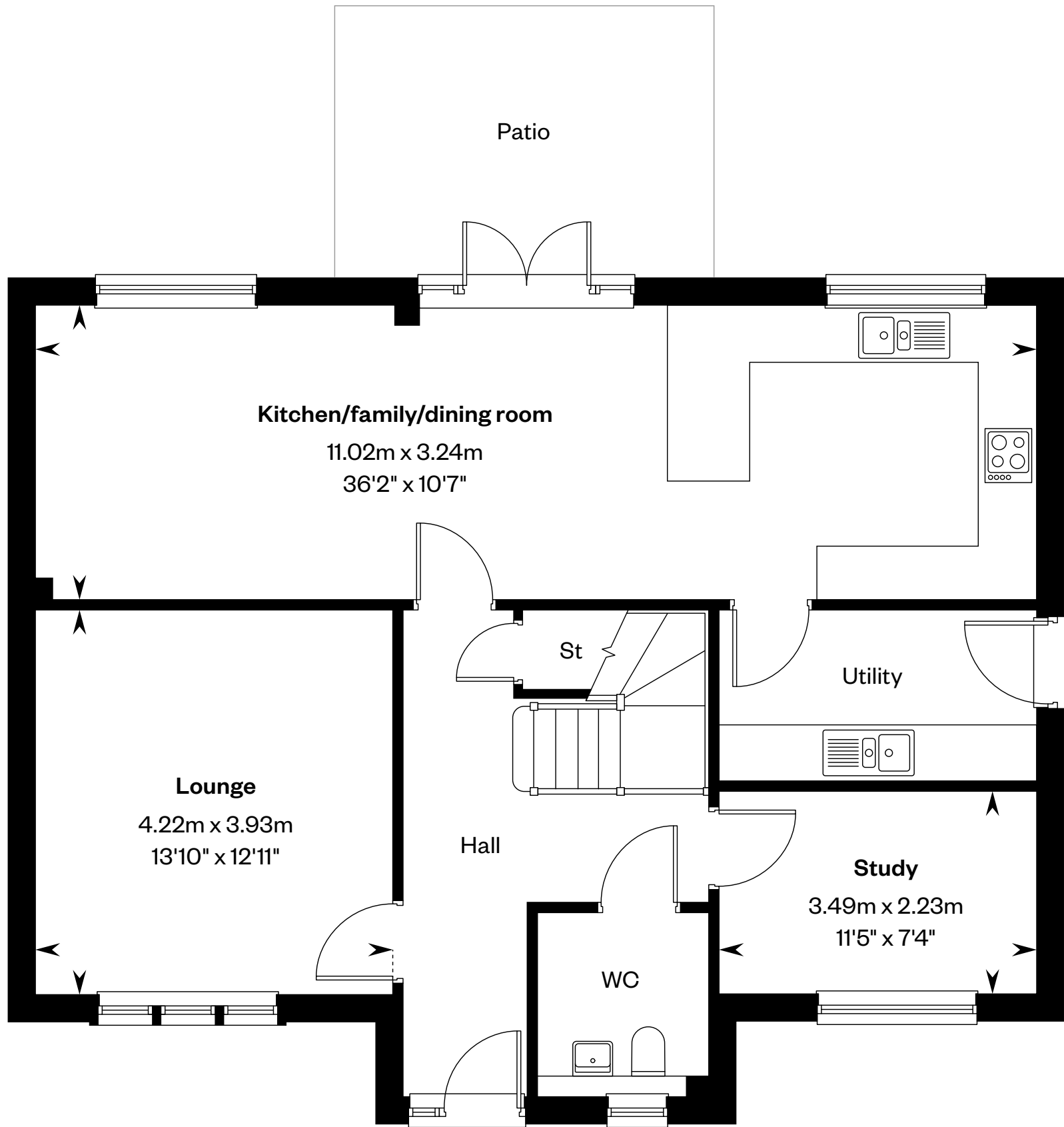
The Elliot

5 bedroom detached home

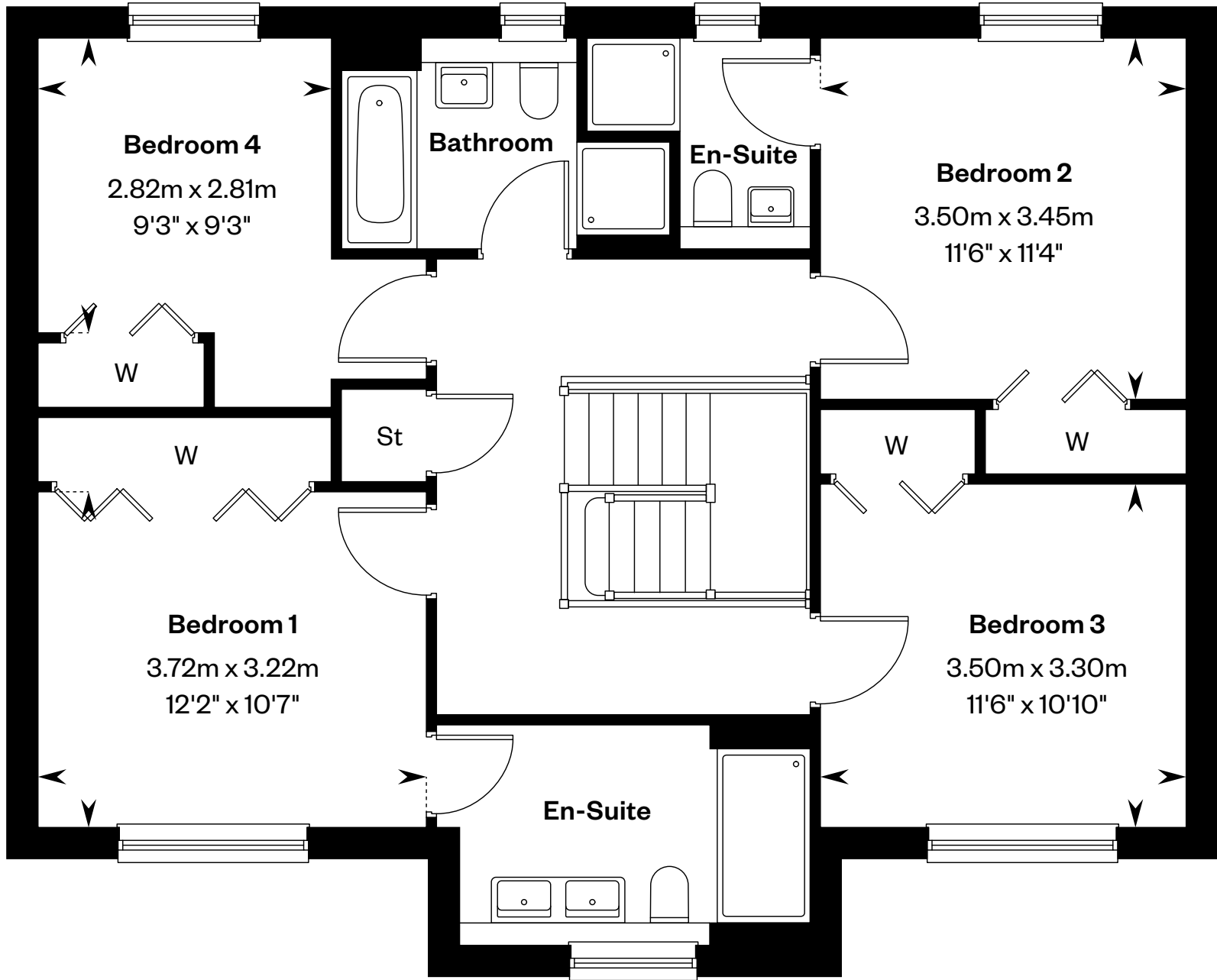
Plots 12 & 19 – as shown



This is a Predicted Energy Assessment for properties that are incomplete. Once the property is completed, this rating will be updated and an official Energy Performance Certificate will be created for the property.



Ground floor



First floor

Please ask your Sales Consultant for further details. St: Store cupboard. W: Wardrobe.

IMPORTANT NOTICE TO CUSTOMERS: The Consumer Protection from Unfair Trading Regulations 2008. Cala Homes (North) Limited operates a policy of continual product development and the specifications outlined in this brochure are indicative only. The computer generated images and photographs do not necessarily represent the actual finishings/elevation or treatments, landscaping, furnishings and fittings at this development. Information contained is accurate at date of publication on 09.01.25. See the main brochure for the full Consumer Protection statement.

The Garvie

5 bedroom detached home

CALA



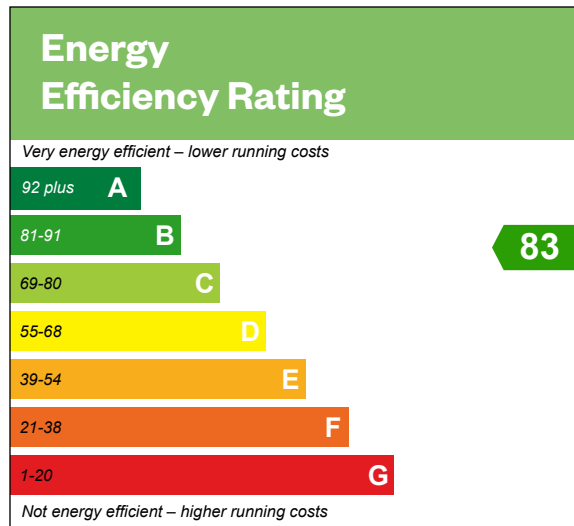
OGI - A typical Garvie

The Garvie

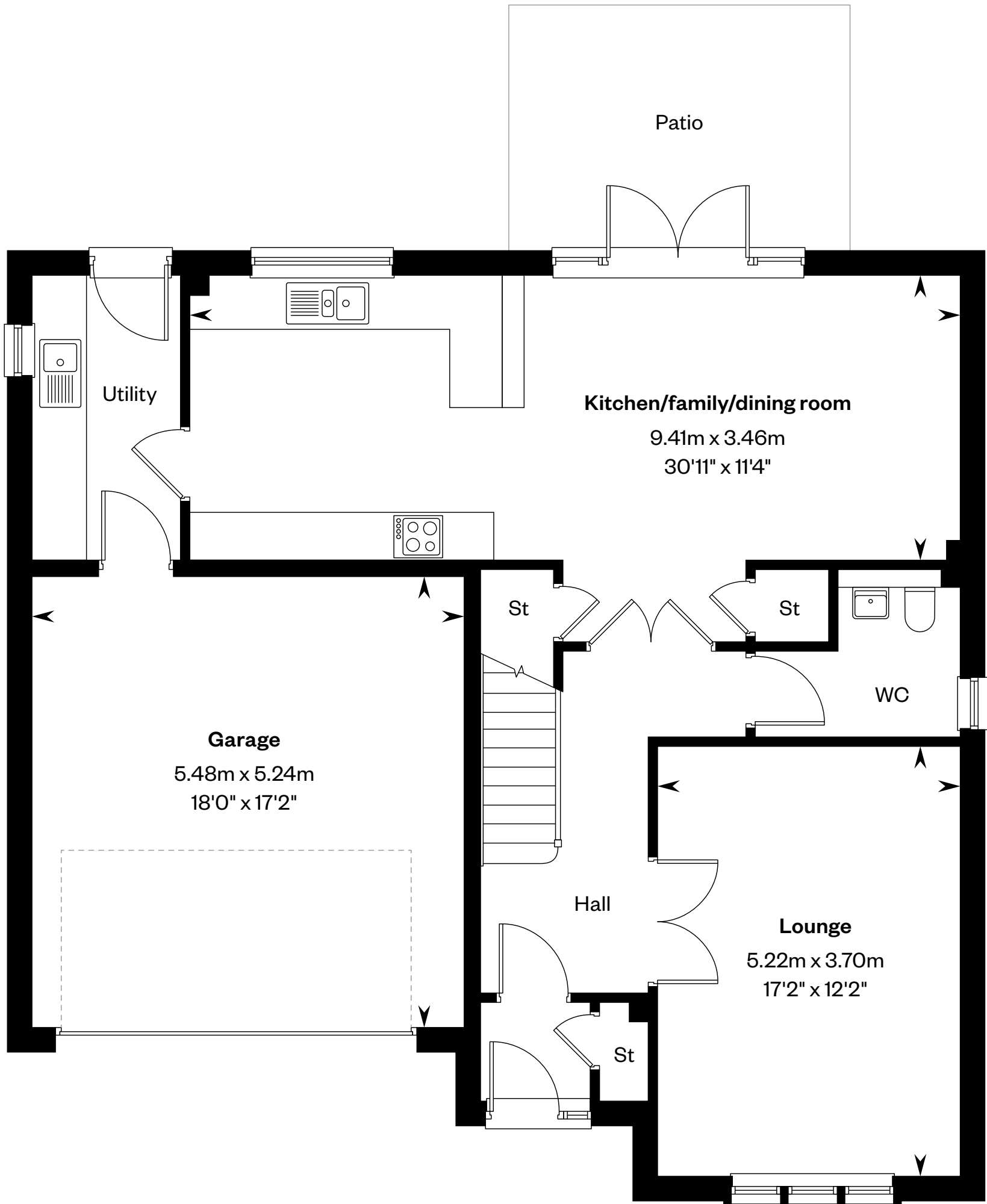
5 bedroom detached home

Plots 11, 13, 15, 26, 27, 34 & 48 – as shown

Plots 4, 21, 28, 35 & 51 – handed



This is a Predicted Energy Assessment for properties that are incomplete. Once the property is completed, this rating will be updated and an official Energy Performance Certificate will be created for the property.



Ground floor



First floor

Please ask your Sales Consultant for further details. St: Store cupboard. W: Wardrobe.

IMPORTANT NOTICE TO CUSTOMERS: The Consumer Protection from Unfair Trading Regulations 2008. Cala Homes (North) Limited operates a policy of continual product development and the specifications outlined in this brochure are indicative only. The computer generated images and photographs do not necessarily represent the actual finishings/elevation or treatments, landscaping, furnishings and fittings at this development. Information contained is accurate at date of publication on 09.01.25. See the main brochure for the full Consumer Protection statement.

The Kennedy

5 bedroom detached home

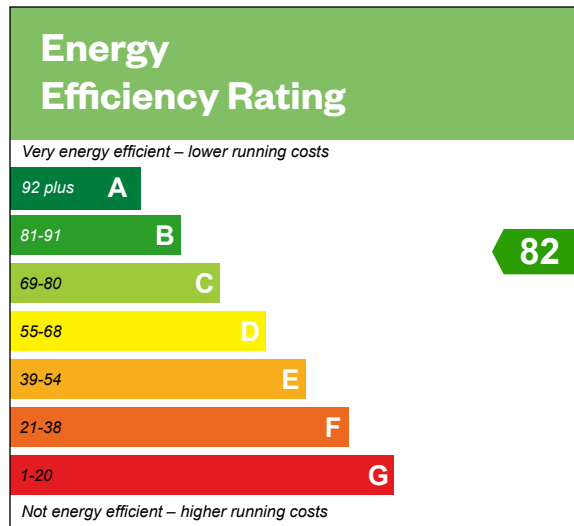


CGI - A typical Kennedy

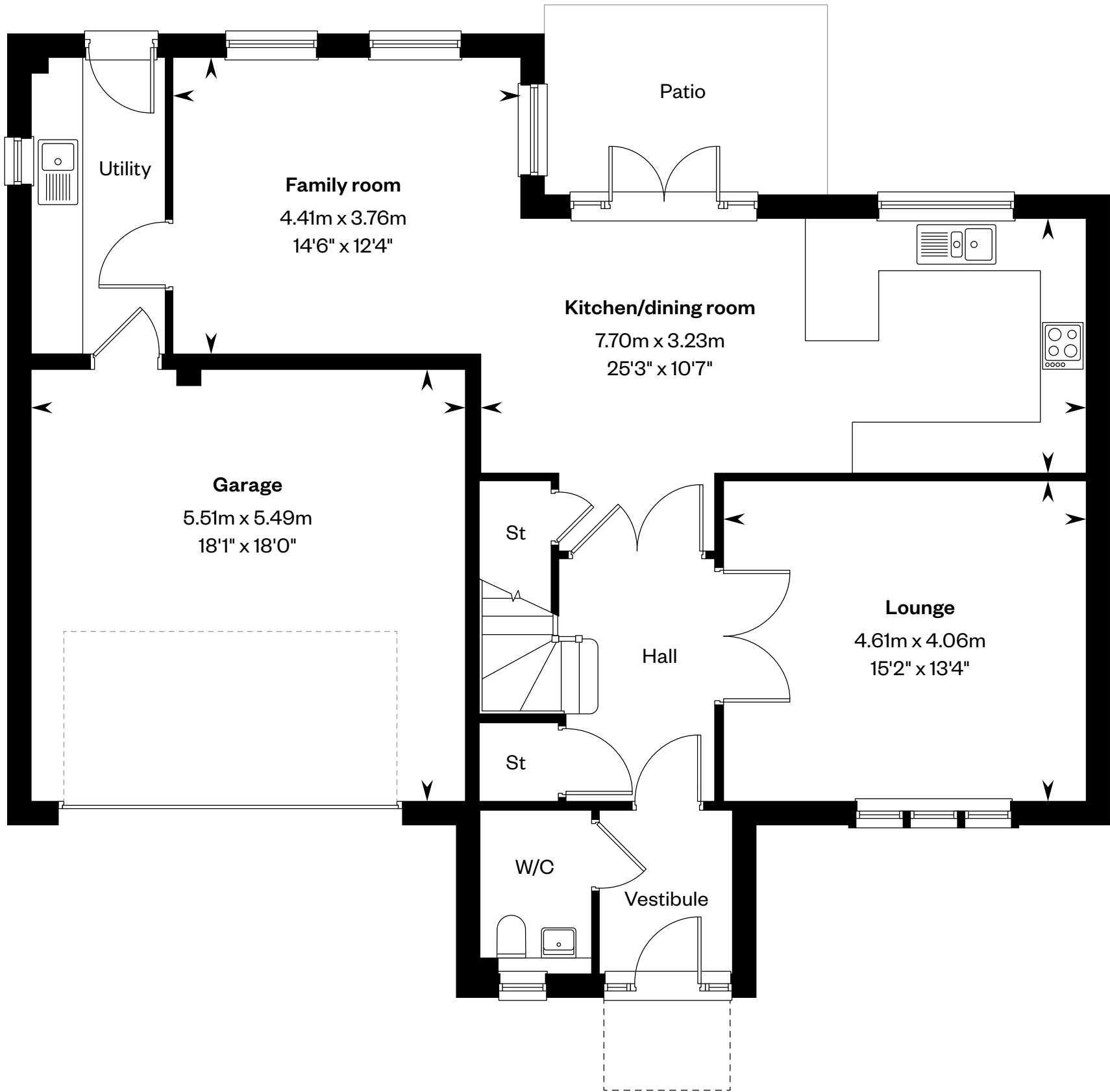
The Kennedy

5 bedroom detached home

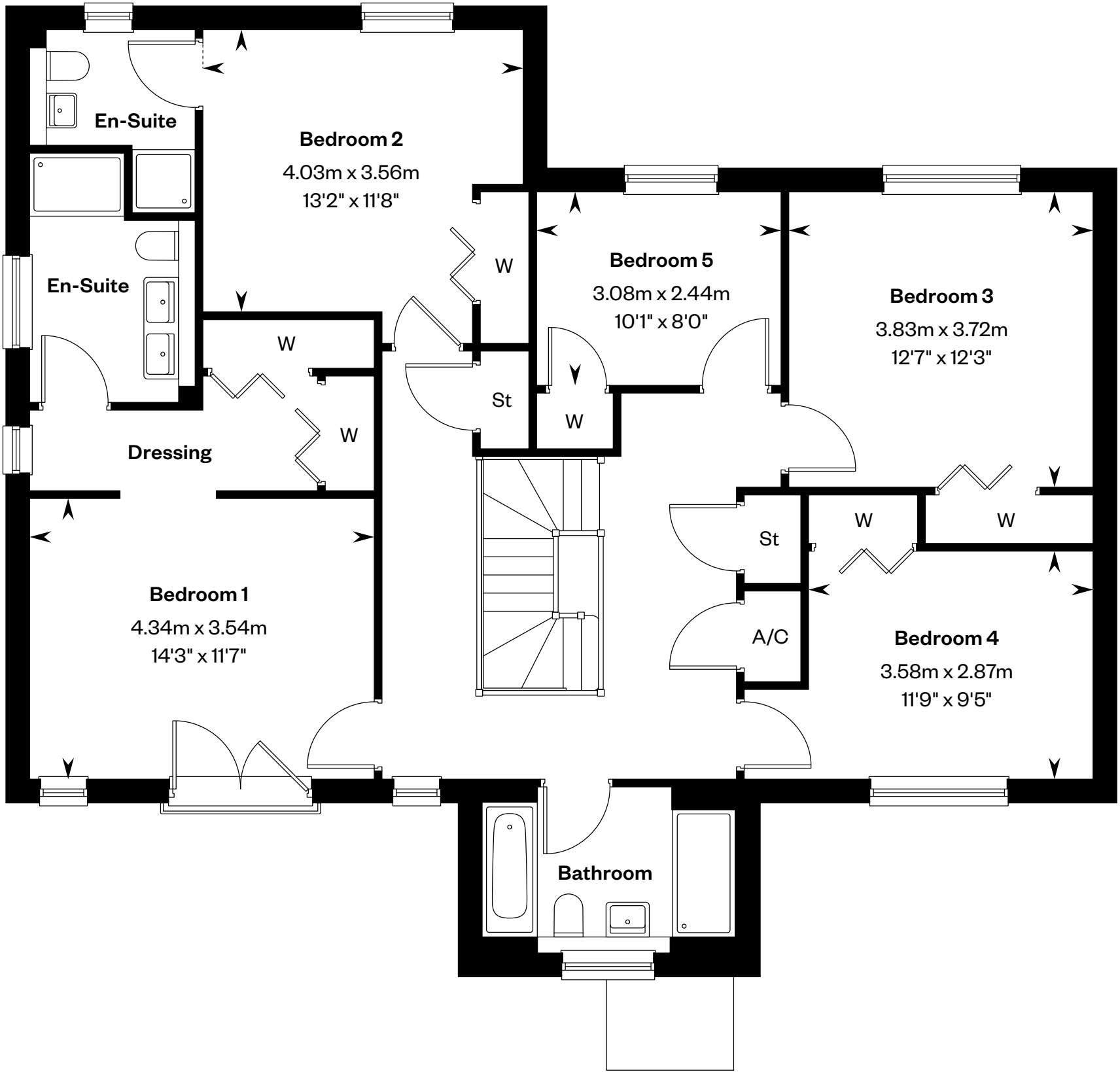
Plots 22, 29 & 33 – as shown



This is a Predicted Energy Assessment for properties that are incomplete. Once the property is completed, this rating will be updated and an official Energy Performance Certificate will be created for the property.



Ground floor



First floor

Please ask your Sales Consultant for further details. A/C: Airing cupboard. St: Store cupboard. W: Wardrobe.

IMPORTANT NOTICE TO CUSTOMERS: The Consumer Protection from Unfair Trading Regulations 2008. Cala Homes (North) Limited operates a policy of continual product development and the specifications outlined in this brochure are indicative only. The computer generated images and photographs do not necessarily represent the actual finishings/elevation or treatments, landscaping, furnishings and fittings at this development. Information contained is accurate at date of publication on 09.01.25. See the main brochure for the full Consumer Protection statement.

The Lowther

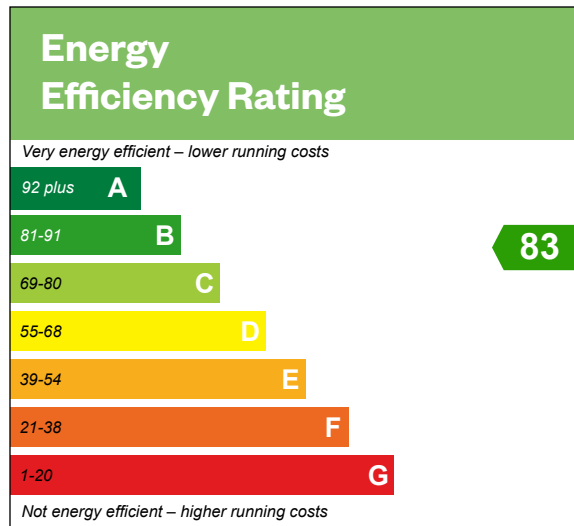
5 bedroom detached home



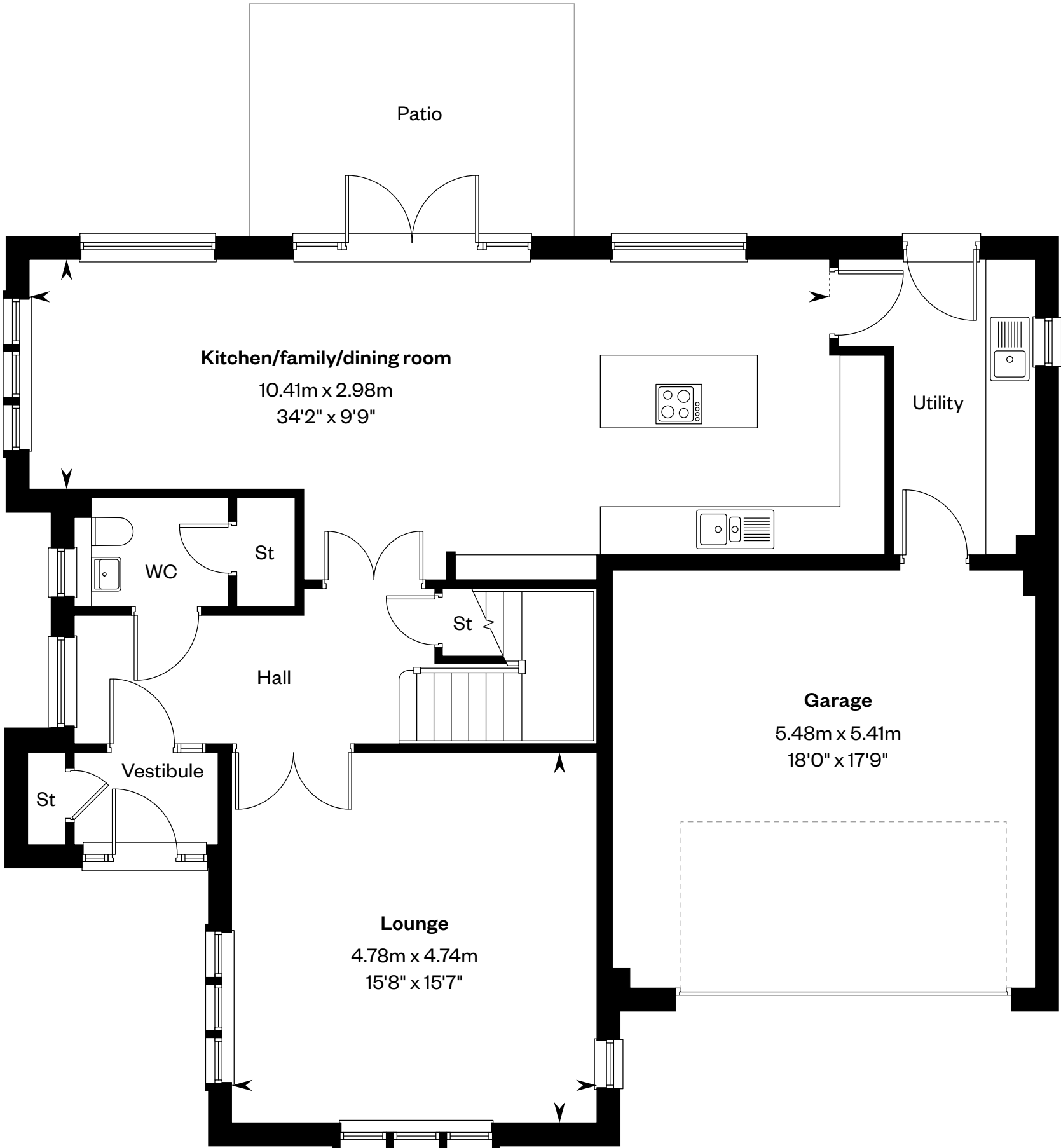
The Lowther

5 bedroom detached home

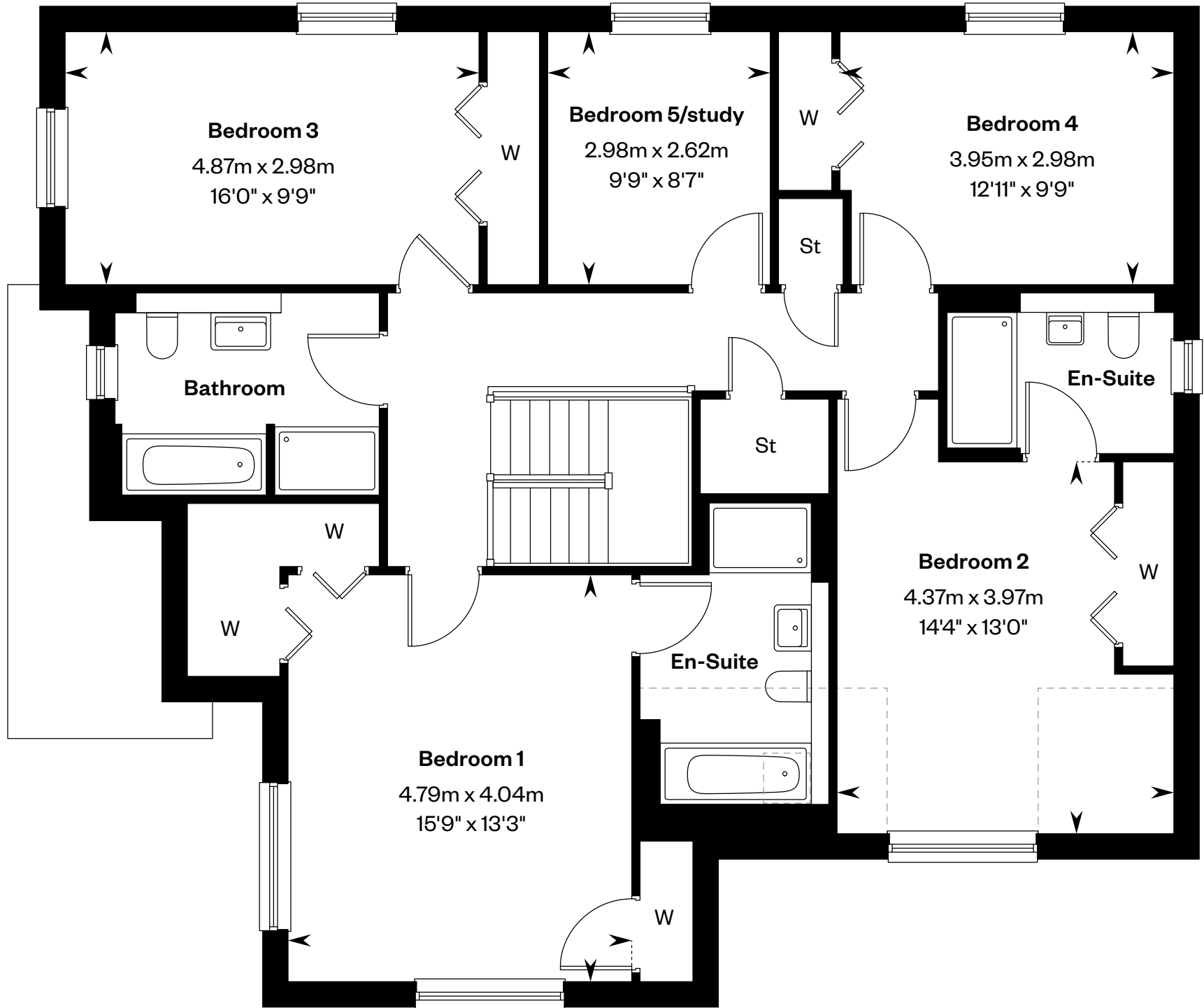
Plots 24, 30, 46 & 50 – as shown



This is a Predicted Energy Assessment for properties that are incomplete. Once the property is completed, this rating will be updated and an official Energy Performance Certificate will be created for the property.



Ground floor



First floor

Please ask your Sales Consultant for further details. St: Store cupboard. W: Wardrobe. ----: Dotted lines denote reduced head height.

IMPORTANT NOTICE TO CUSTOMERS: The Consumer Protection from Unfair Trading Regulations 2008. Cala Homes (North) Limited operates a policy of continual product development and the specifications outlined in this brochure are indicative only. The computer generated images and photographs do not necessarily represent the actual finishings/elevation or treatments, landscaping, furnishings and fittings at this development. Information contained is accurate at date of publication on 09.01.25. See the main brochure for the full Consumer Protection statement.

The Moncrief

5 bedroom detached home

CALA



CGI - A typical Moncrief

The Moncrief

5 bedroom detached home

Plots 23 & 31 – as shown

Energy Efficiency Rating

Very energy efficient – lower running costs

92 plus **A**

81-91 **B**

69-80 **C**

55-68 **D**

39-54 **E**

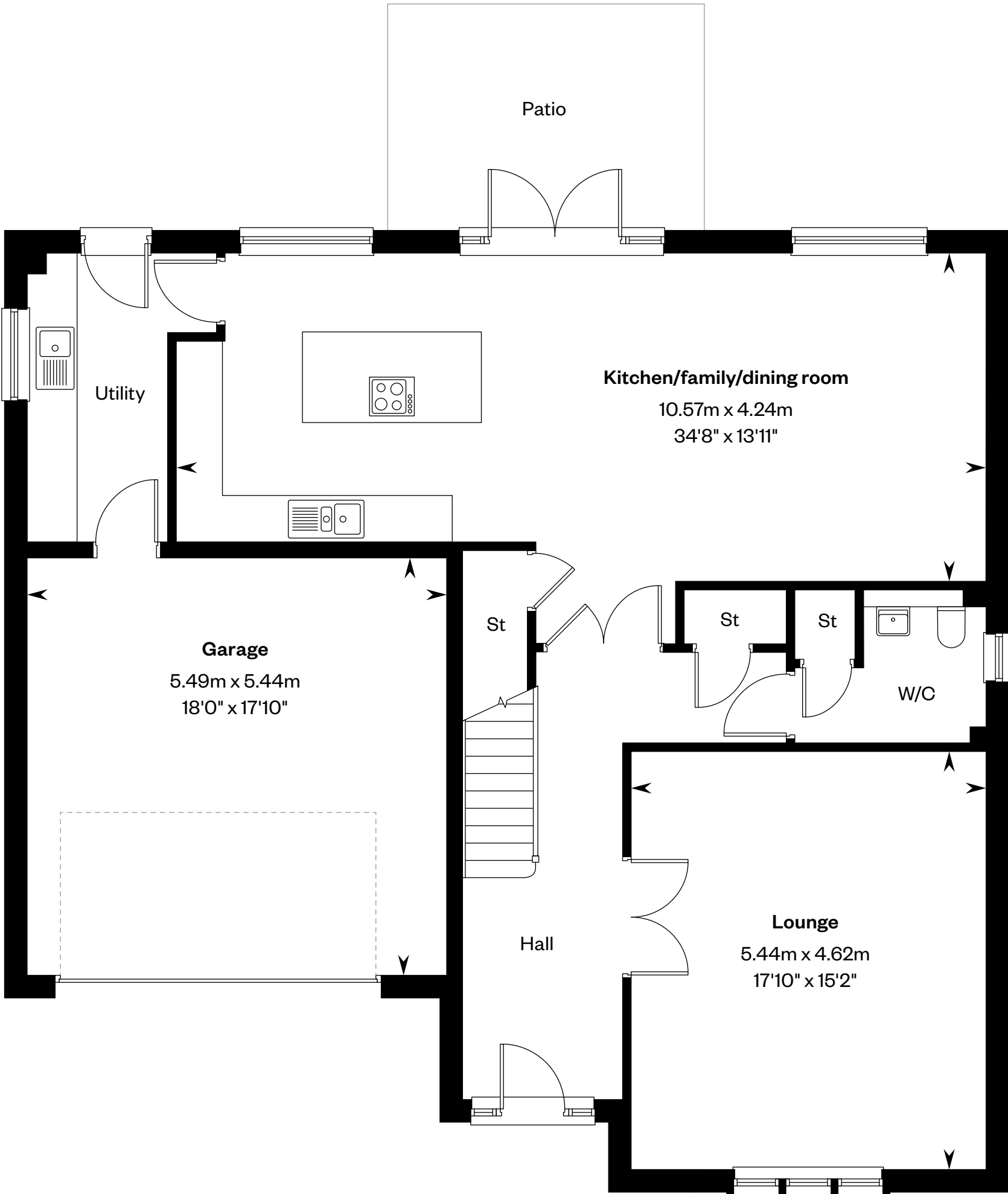
21-38 **F**

1-20 **G**

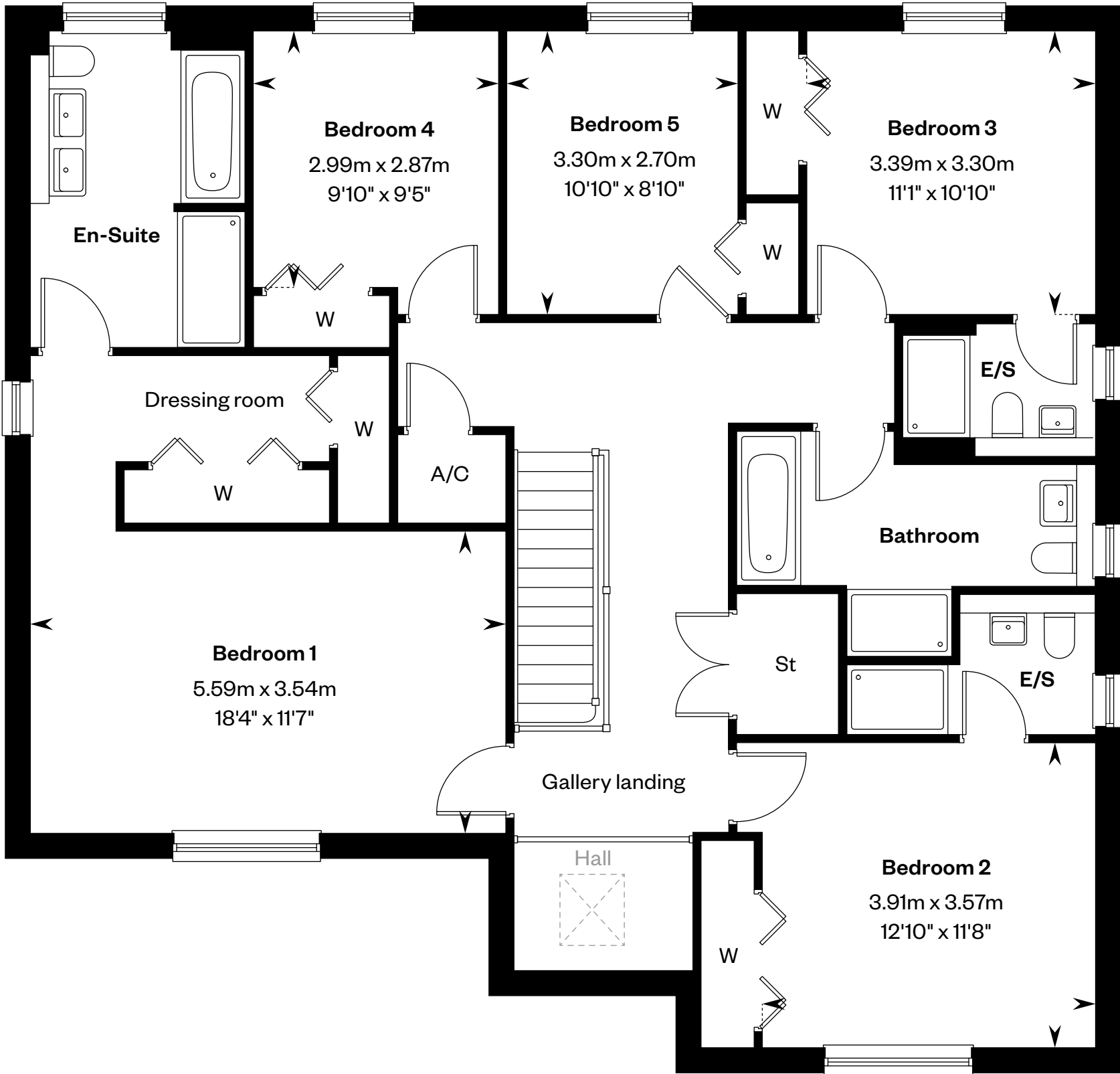
Not energy efficient – higher running costs

83

This is a Predicted Energy Assessment for properties that are incomplete. Once the property is completed, this rating will be updated and an official Energy Performance Certificate will be created for the property.



Ground floor



First floor

Please ask your Sales Consultant for further details. A/C: Airing cupboard. E/S: En-Suite. St: Store cupboard. W: Wardrobe. : Roof light/velux window.

IMPORTANT NOTICE TO CUSTOMERS: The Consumer Protection from Unfair Trading Regulations 2008. Cala Homes (North) Limited operates a policy of continual product development and the specifications outlined in this brochure are indicative only. The computer generated images and photographs do not necessarily represent the actual finishings/elevation or treatments, landscaping, furnishings and fittings at this development. Information contained is accurate at date of publication on 09.01.25. See the main brochure for the full Consumer Protection statement.