



The Allan

3 bedroom semi-detached and terraced home

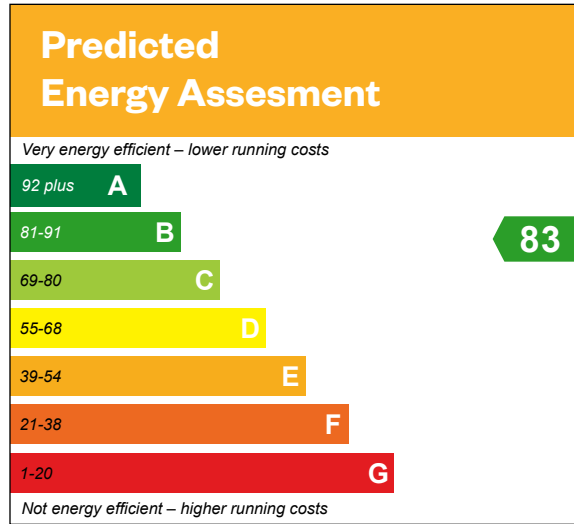


The Allan

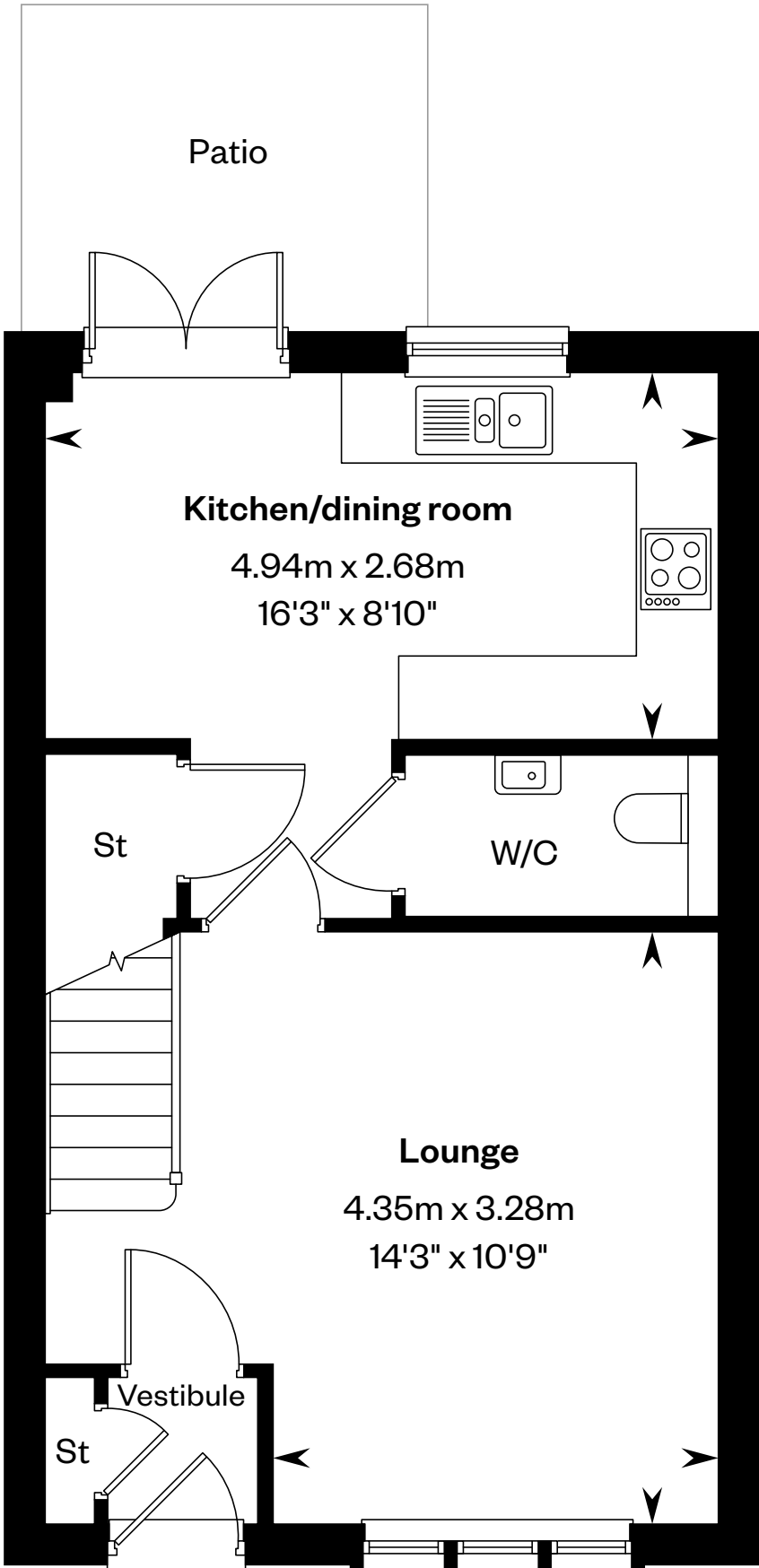
3 bedroom semi-detached and terraced home

Plots 114, 116, 118, 119, 123, 125 & 168 – as shown

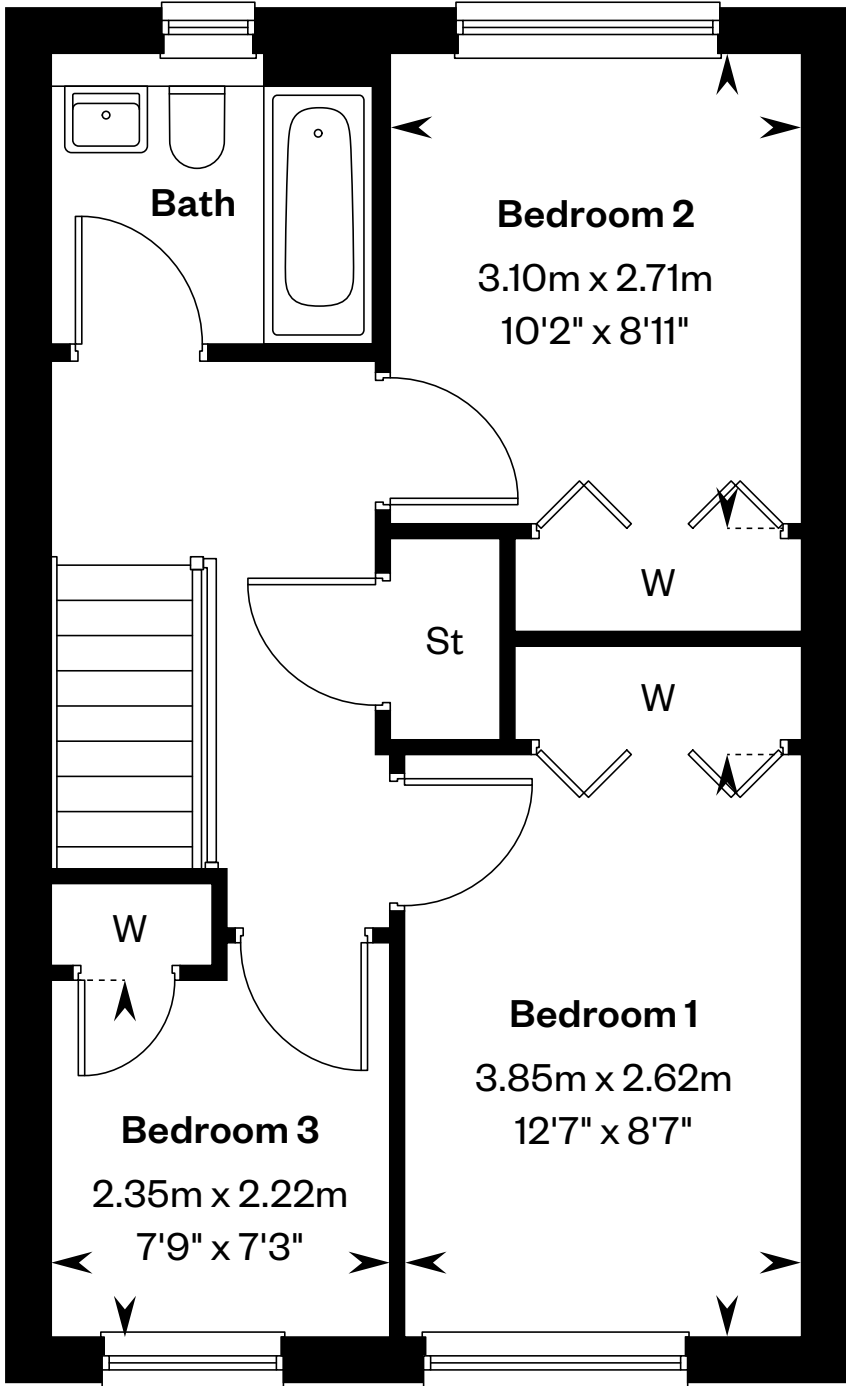
Plots 115, 117, 120, 124, 165, 166 & 167 – handed



This is a Predicted Energy Assessment for properties that are incomplete. Once the property is completed, this rating will be updated and an official Energy Performance certificate will be created for the property.



Ground floor



First floor

Please ask your Sales Consultant for further details. St: Store cupboard. W: Wardrobe.

IMPORTANT NOTICE TO CUSTOMERS: The Consumer Protection from Unfair Trading Regulations 2008. Cala Homes (East) Limited operates a policy of continual product development and the specifications outlined in this brochure are indicative only. The computer generated images and photographs do not necessarily represent the actual finishings/elevation or treatments, landscaping, furnishings and fittings at this development. Information contained is accurate at date of publication on 19.02.2025. See the main brochure for the full Consumer Protection statement.



The Arran

3 bedroom semi-detached home



OGI A typical Arran

The Arran

3 bedroom semi-detached home

Plot 126 – handed

Predicted
Energy Assesment

Very energy efficient – lower running costs

92 plus **A**

81-91 **B**

69-80 **C**

55-68 **D**

39-54 **E**

21-38 **F**

1-20 **G**

Not energy efficient – higher running costs

82

This is a Predicted Energy Assessment for properties that are incomplete. Once the property is completed, this rating will be updated and an official Energy Performance certificate will be created for the property.

**Kitchen/
dining room**
5.26m x 3.11m
17'3" x 10'2"

Lounge
5.26m x 3.41m
17'3" x 11'2"

Hall

W/C

St

Patio

Ground floor

Bedroom 1
3.65m x 2.81m
12'0" x 9'3"

Bedroom 2
3.12m x 2.87m
10'3" x 9'5"

Bedroom 3
3.42m x 2.27m
11'3" x 7'5"

Bath

E/S

W

First floor

Please ask your Sales Consultant for further details. E/S: En-Suite. St: Store cupboard. W: Wardrobe.

IMPORTANT NOTICE TO CUSTOMERS: The Consumer Protection from Unfair Trading Regulations 2008. Cala Homes (East) Limited operates a policy of continual product development and the specifications outlined in this brochure are indicative only. The computer generated images and photographs do not necessarily represent the actual finishings/elevation or treatments, landscaping, furnishings and fittings at this development. Information contained is accurate at date of publication on 19.02.2025. See the main brochure for the full Consumer Protection statement.



The Avon

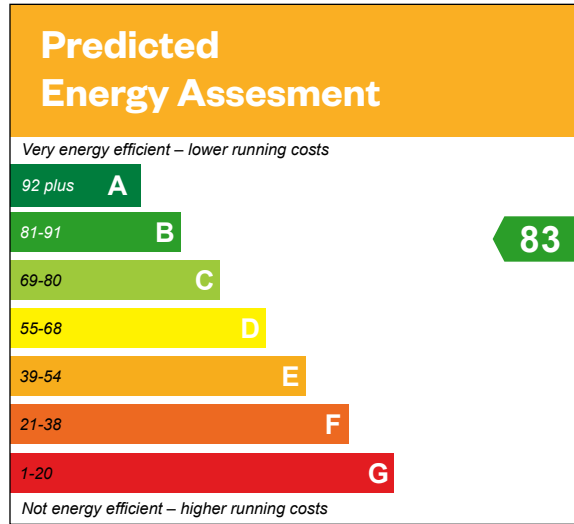
3 bedroom semi-detached and terraced home



The Avon

3 bedroom semi-detached and terraced home

Plots 83, 84, 85, 86, 87, 88, 89,
163 & 164 – as shown





The Banton

3 bedroom semi-detached and terraced home



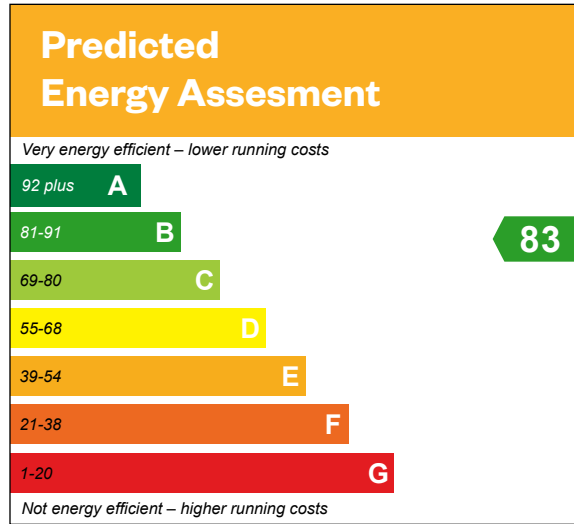
CGI A typical Banton

The Banton

3 bedroom semi-detached and terraced home

Plots 122, 139, 140, 141, 169, 170 & 171 – as shown

Plots 121, 142 & 143 – handed





The Barrie

4 bedroom detached home

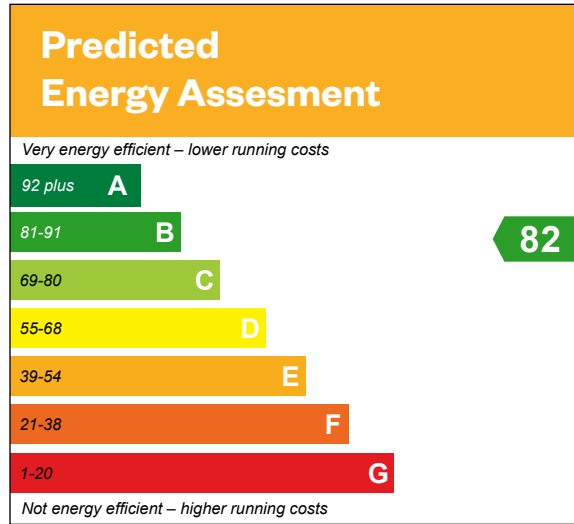


The Barrie

4 bedroom detached home

Plots 90, 101, 105, 110, 136, 152 & 158 – as shown

Plots 93, 98, 102, 113, 133, 137, 149, 159 & 162 – handed





The Blair

4 bedroom detached home

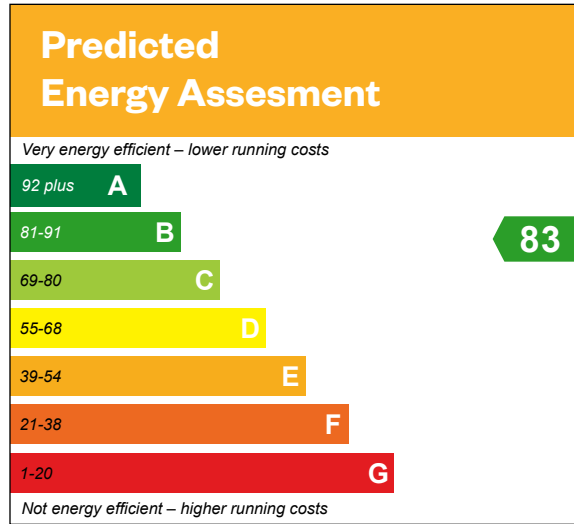


The Blair

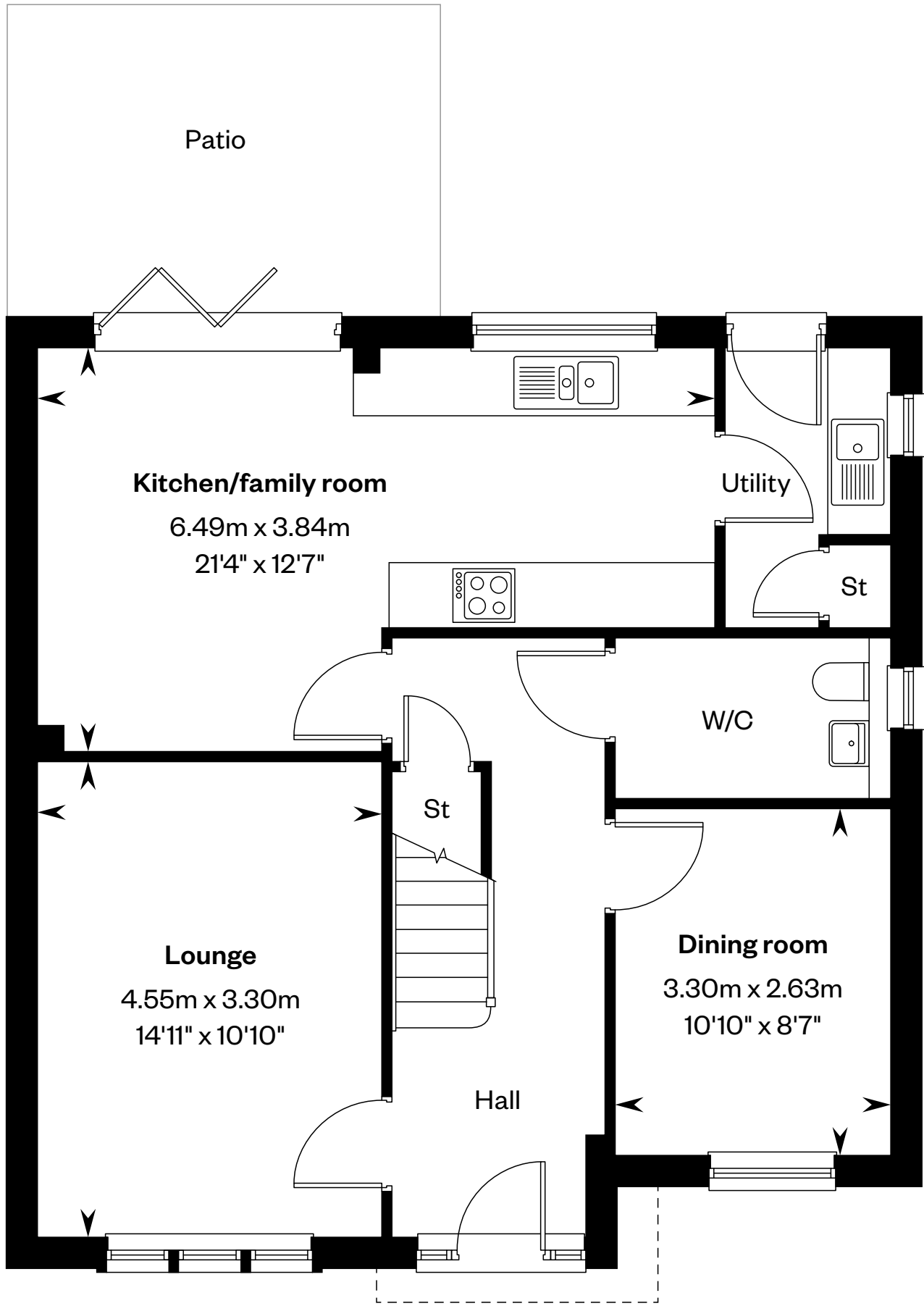
4 bedroom detached home

Plots 92, 95, 97, 103, 109, 112, 128, 144, 146 & 156 – as shown

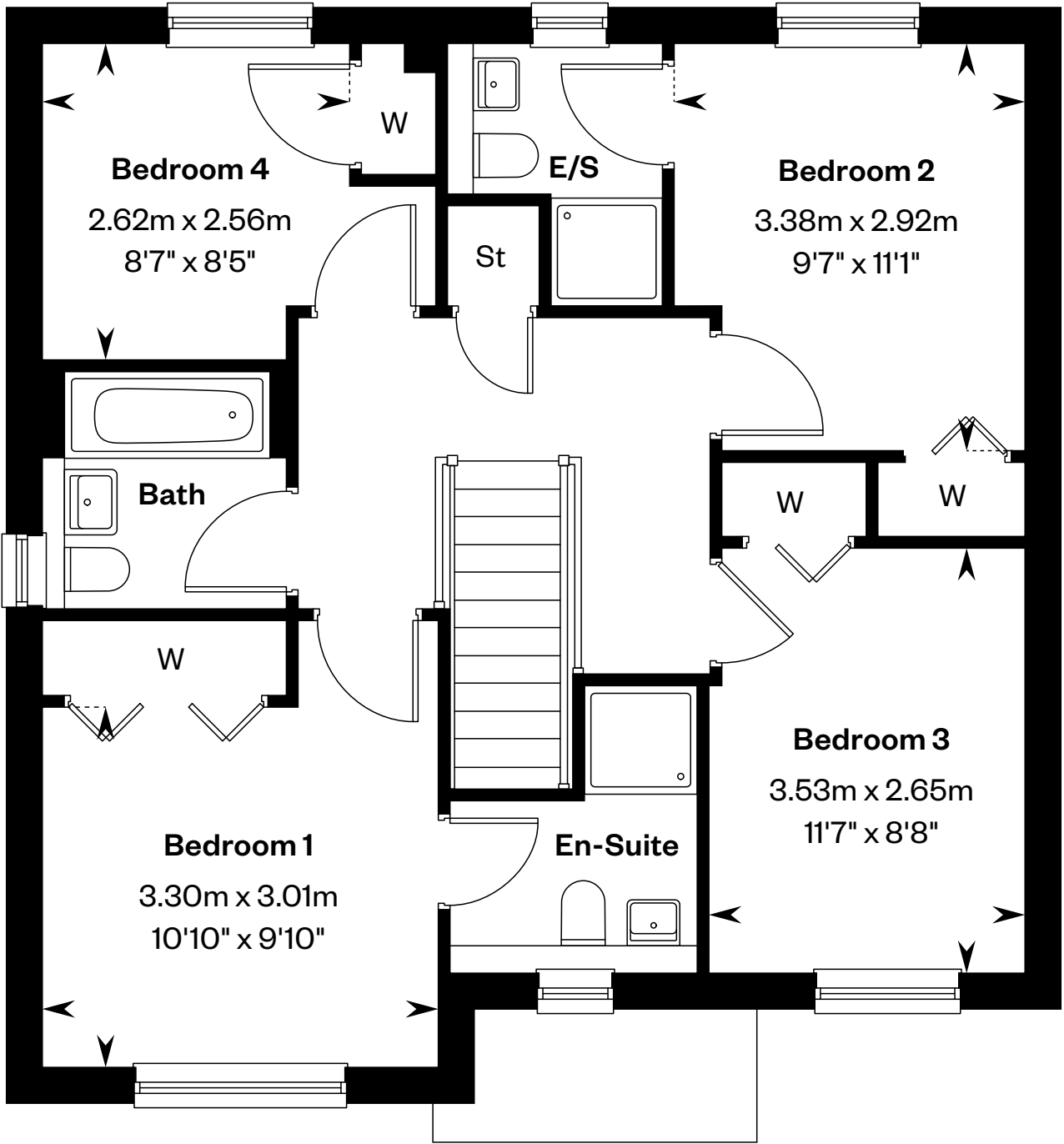
Plots 91, 94, 96, 100, 108, 111, 127, 138, 145 & 155 – handed



This is a Predicted Energy Assessment for properties that are incomplete. Once the property is completed, this rating will be updated and an official Energy Performance certificate will be created for the property.



Ground floor



First floor

Please ask your Sales Consultant for further details. E/S: En-Suite. St: Store cupboard. W: Wardrobe.

IMPORTANT NOTICE TO CUSTOMERS: The Consumer Protection from Unfair Trading Regulations 2008. Cala Homes (East) Limited operates a policy of continual product development and the specifications outlined in this brochure are indicative only. The computer generated images and photographs do not necessarily represent the actual finishings/elevation or treatments, landscaping, furnishings and fittings at this development. Information contained is accurate at date of publication on 19.02.2025. See the main brochure for the full Consumer Protection statement.



The Bryce

4 bedroom semi-detached and detached home



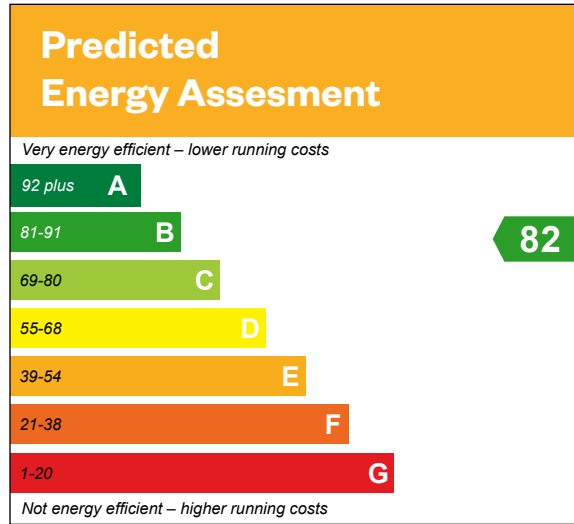
CGI A typical Bryce

The Bryce

4 bedroom semi-detached and detached home

Plots 106, 129, 132, 135, 148*, 151, 153 & 157 – as shown

Plots 107, 130, 147*, 154 & 161 – handed





The Cairn

4 bedroom detached home



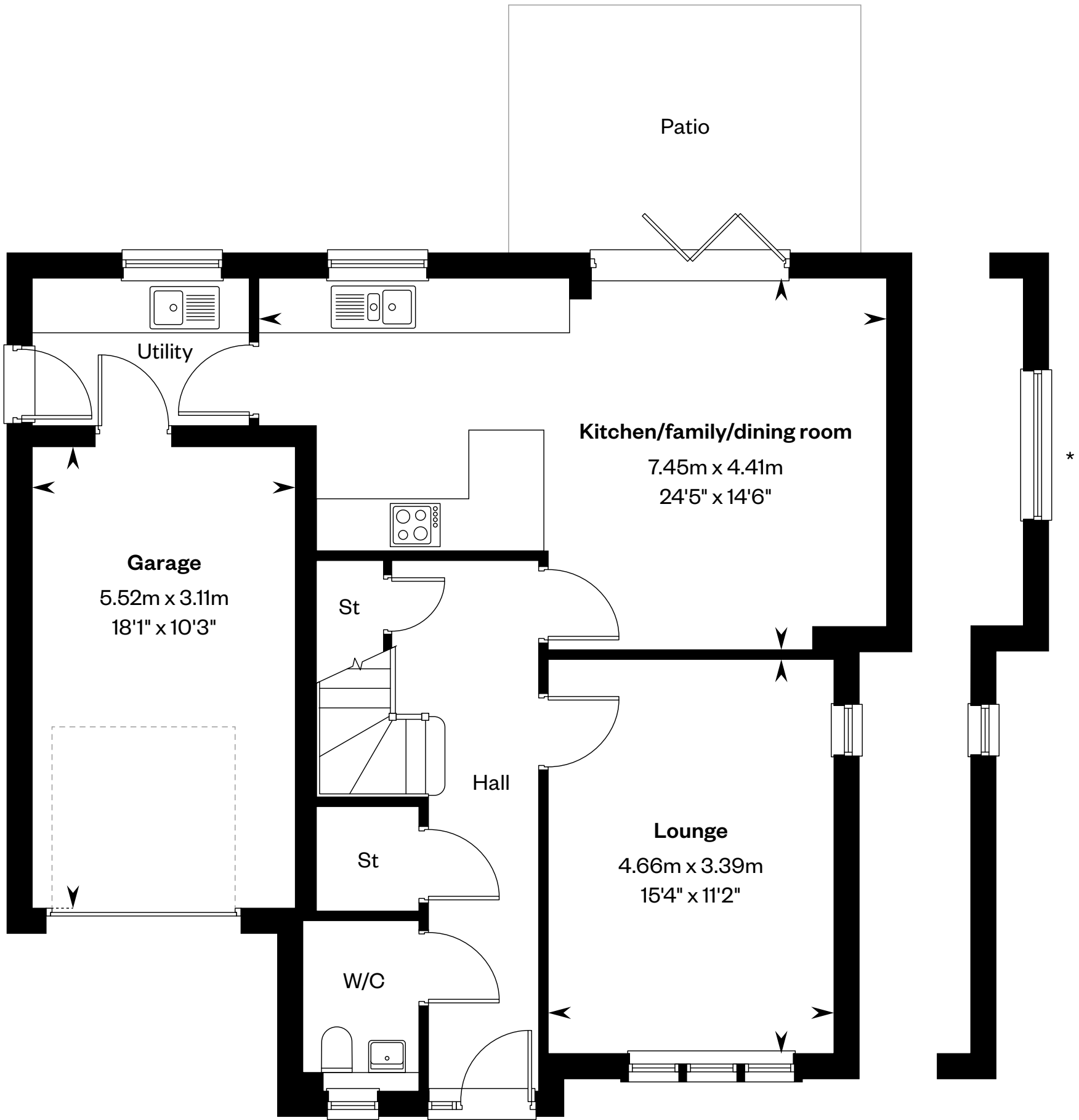
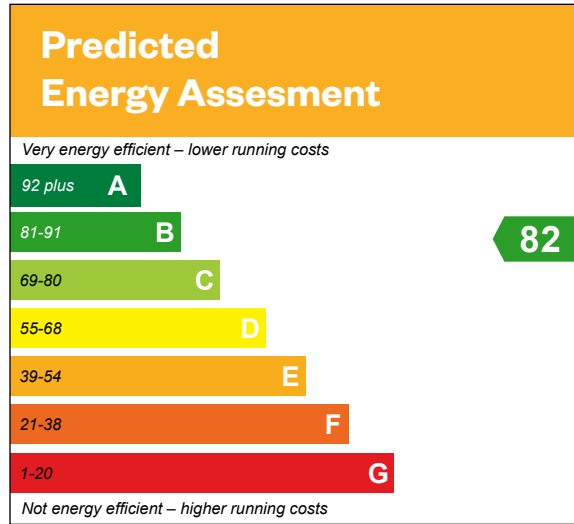
CGI A typical Cairn

The Cairn

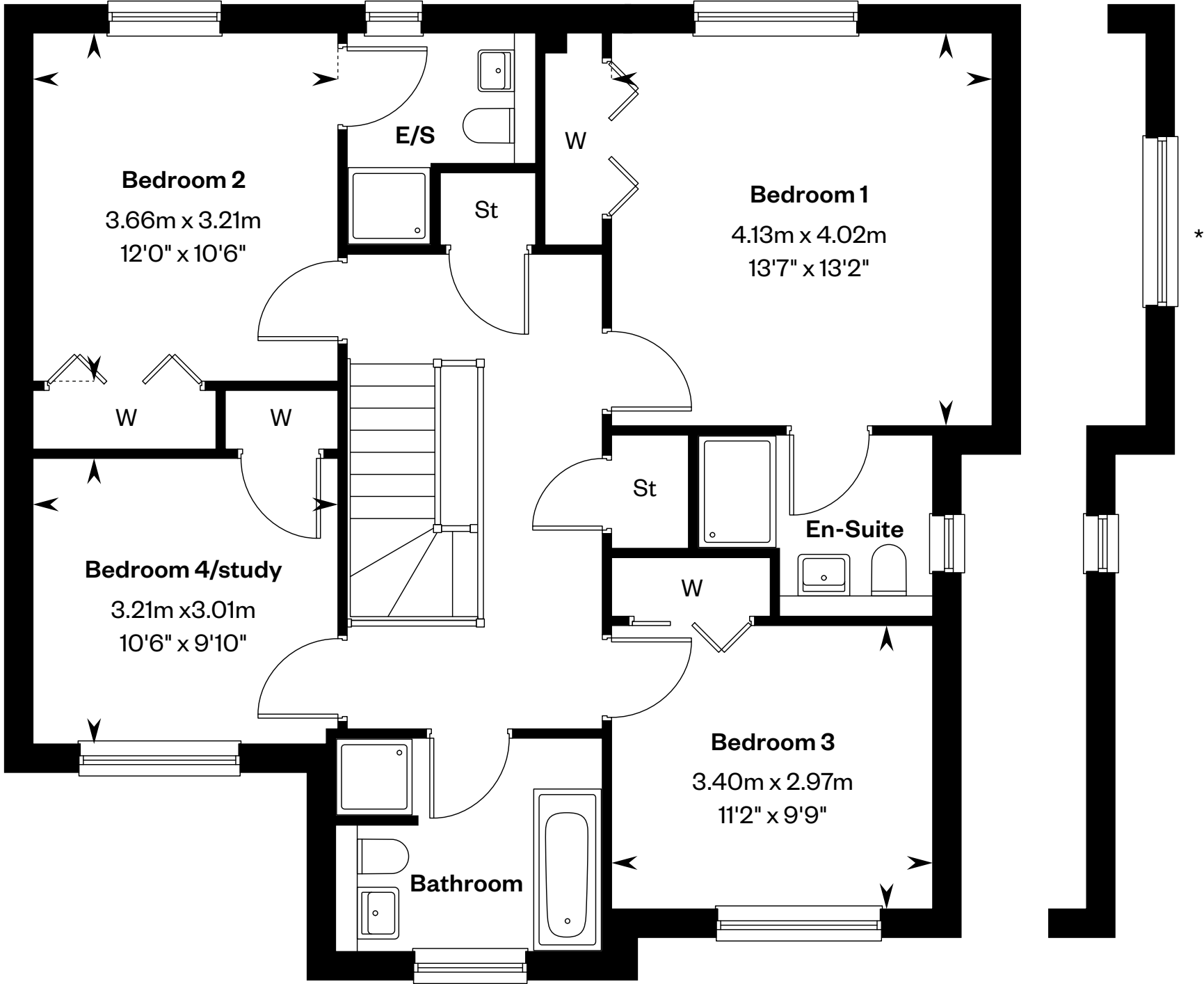
4 bedroom detached home

Plots 104, 131 & 160 – as shown

Plots 99 & 150 – handed



Ground floor



First floor

*Please speak to a Sales Consultant for plot specific window locations and for further details. E/S: En-Suite. St: Store cupboard. W: Wardrobe.

IMPORTANT NOTICE TO CUSTOMERS: The Consumer Protection from Unfair Trading Regulations 2008. Cala Homes (East) Limited operates a policy of continual product development and the specifications outlined in this brochure are indicative only. The computer generated images and photographs do not necessarily represent the actual finishings/elevation or treatments, landscaping, furnishings and fittings at this development. Information contained is accurate at date of publication on 19.02.2025. See the main brochure for the full Consumer Protection statement.



The Dewar

5 bedroom detached home



CGI A typical Dewar

The Dewar

5 bedroom detached home

Plot 134 – handed

Predicted
Energy Assesment

Very energy efficient – lower running costs

92 plus **A**

81-91 **B**

69-80 **C**

55-68 **D**

39-54 **E**

21-38 **F**

1-20 **G**


Not energy efficient – higher running costs

83

This is a Predicted Energy Assessment for properties that are incomplete. Once the property is completed, this rating will be updated and an official Energy Performance certificate will be created for the property.

Ground floor

First floor

Please ask your Sales Consultant for further details. A/C: Airing cupboard. St: Store cupboard. W: Wardrobe. : Roof light/velux window to specific plots only. Please speak to a Sales Consultant for further details.

IMPORTANT NOTICE TO CUSTOMERS: The Consumer Protection from Unfair Trading Regulations 2008. Cala Homes (East) Limited operates a policy of continual product development and the specifications outlined in this brochure are indicative only. The computer generated images and photographs do not necessarily represent the actual finishings/elevation or treatments, landscaping, furnishings and fittings at this development. Information contained is accurate at date of publication on 19.02.2025. See the main brochure for the full Consumer Protection statement.