



# The Avon

3 bedroom semi-detached home



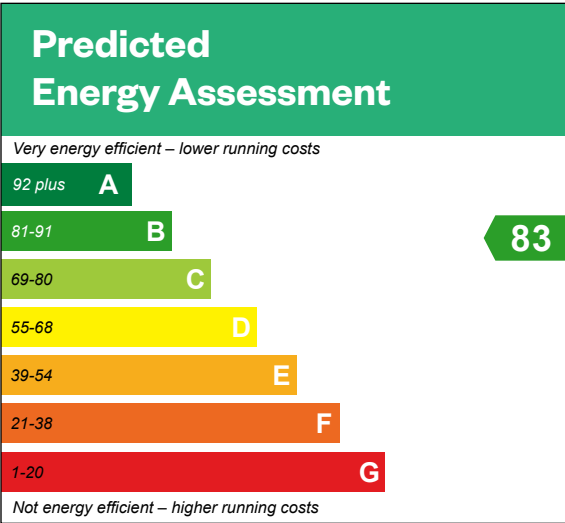
Computer generated image - a typical Avon



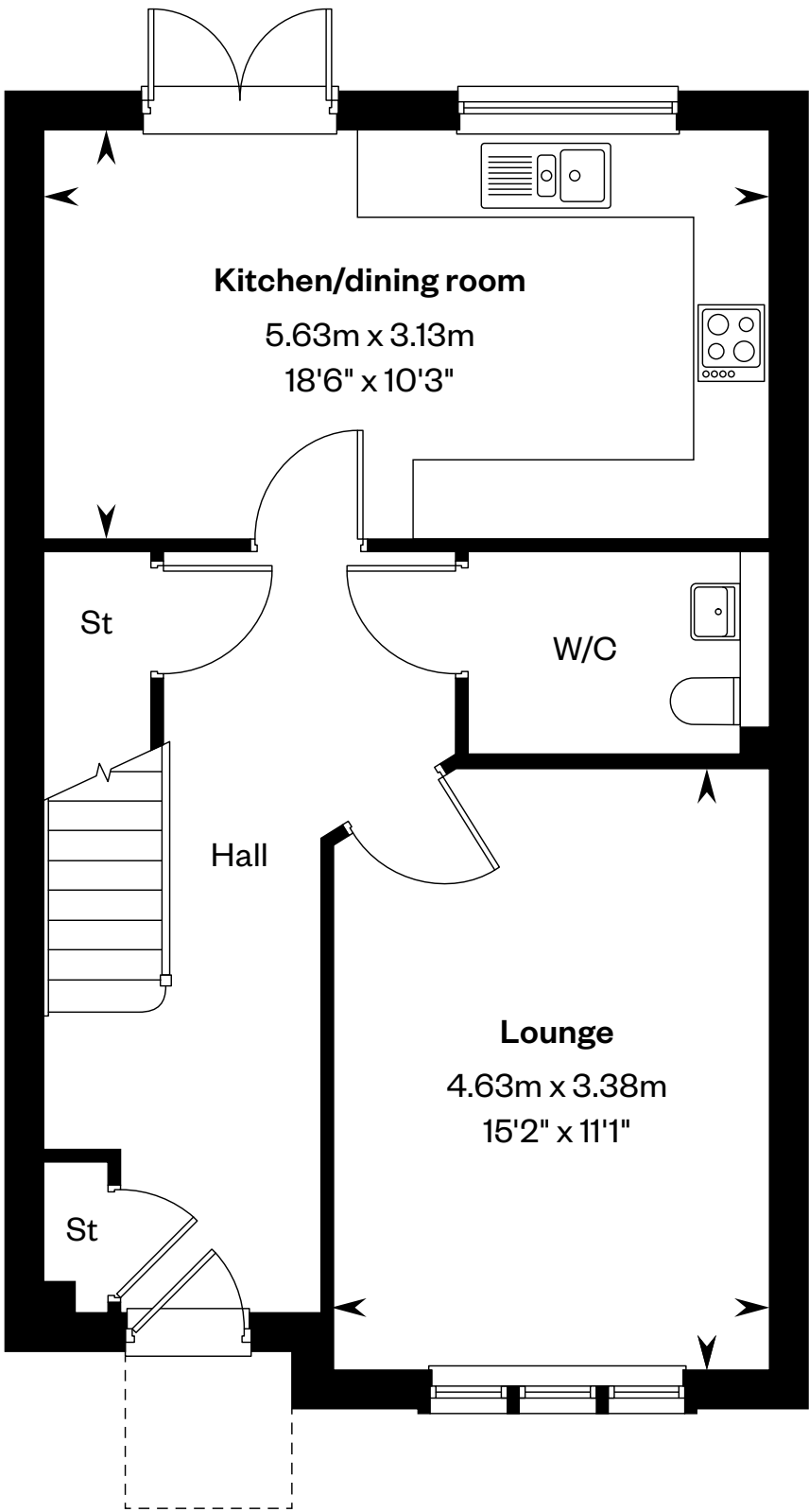
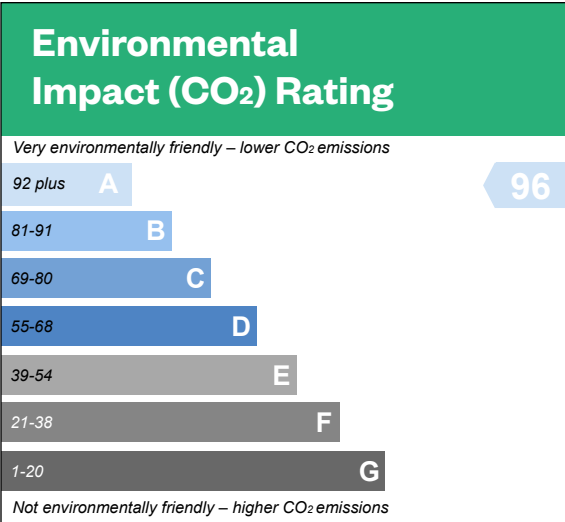
# The Avon

3 bedroom semi-detached home

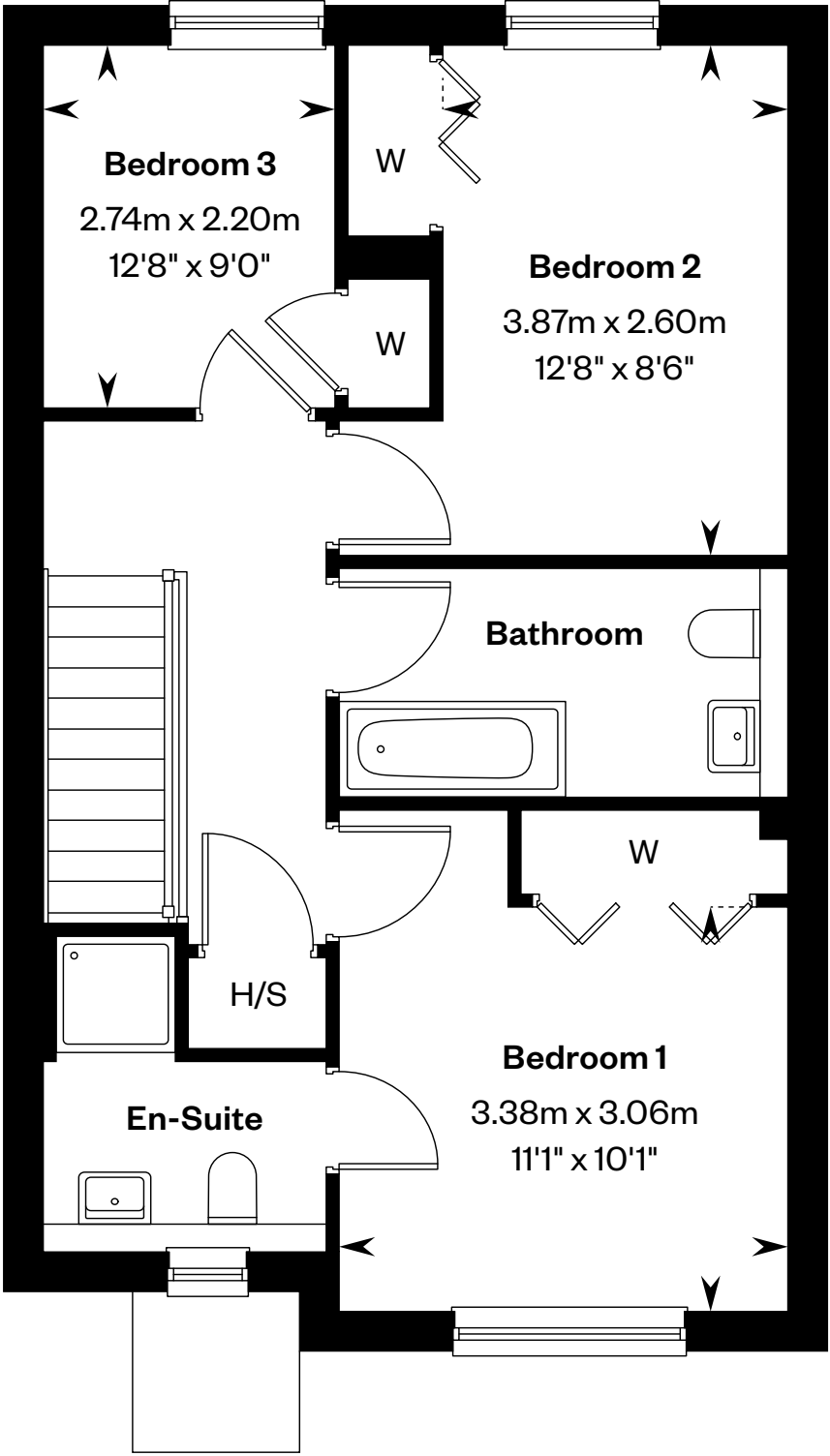
Plots 155 & 156 – as shown



This is a Predicted Energy Assessment for properties that are incomplete. Once the property is completed, this rating will be updated and an official Energy Performance certificate will be created for the property.



Ground floor



First floor

H/S: Heating source cupboard. St: Store cupboard. W: Wardrobe.

IMPORTANT NOTIOE TO CUSTOMERS: The Consumer Protection from Unfair Trading Regulations 2008. Cala Homes (East) Limited operates a policy of continual product development and the specifications outlined in this brochure are indicative only. The computer generated images and photographs do not necessarily represent the actual finishings/elevation or treatments, landscaping, furnishings and fittings at this development. Information contained is accurate at date of publication on 22.04.25. See the main brochure for the full Consumer Protection statement.





# The Colville

4 bedroom detached home with study

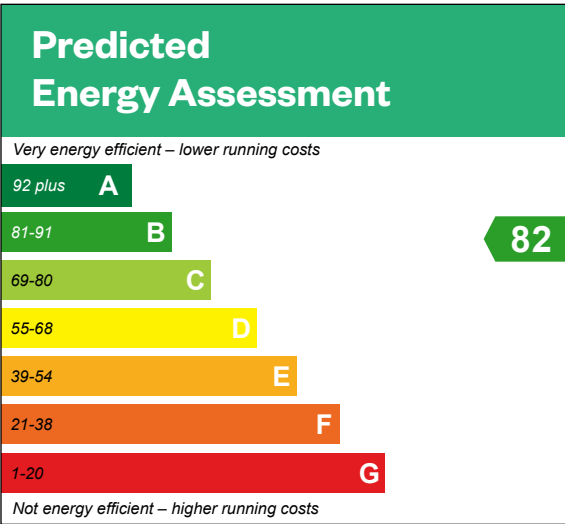




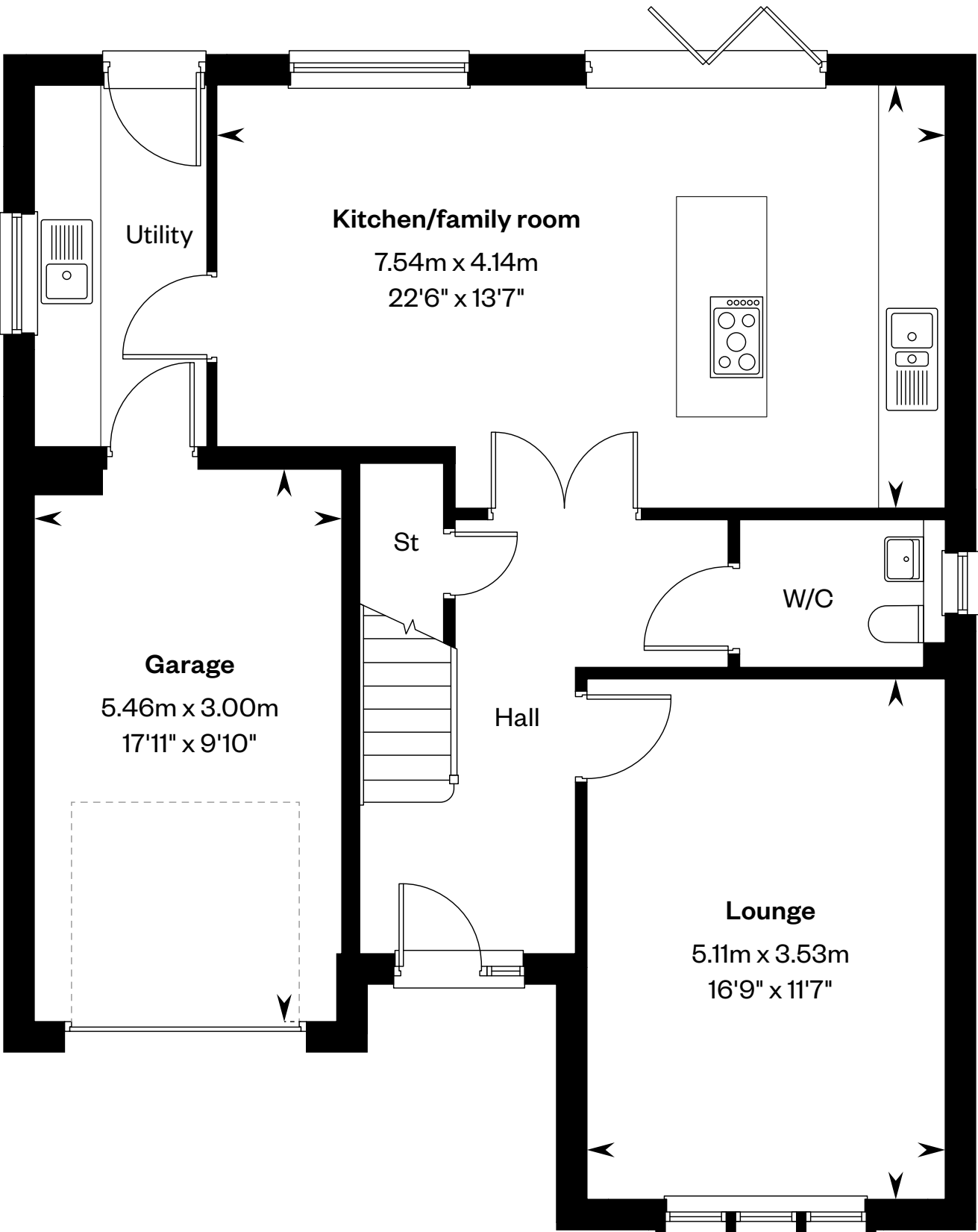
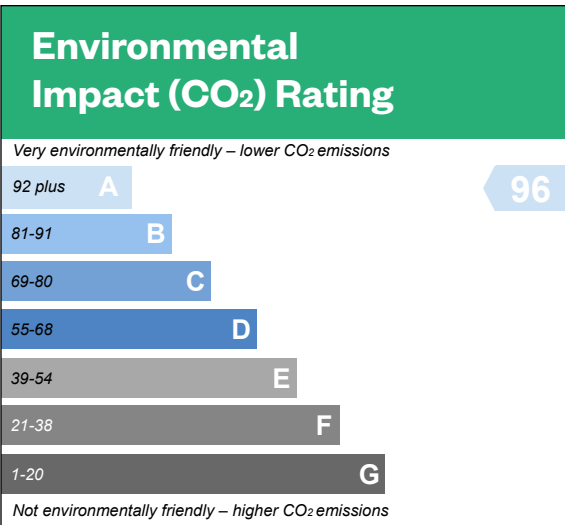
# The Colville

4 bedroom detached home with study

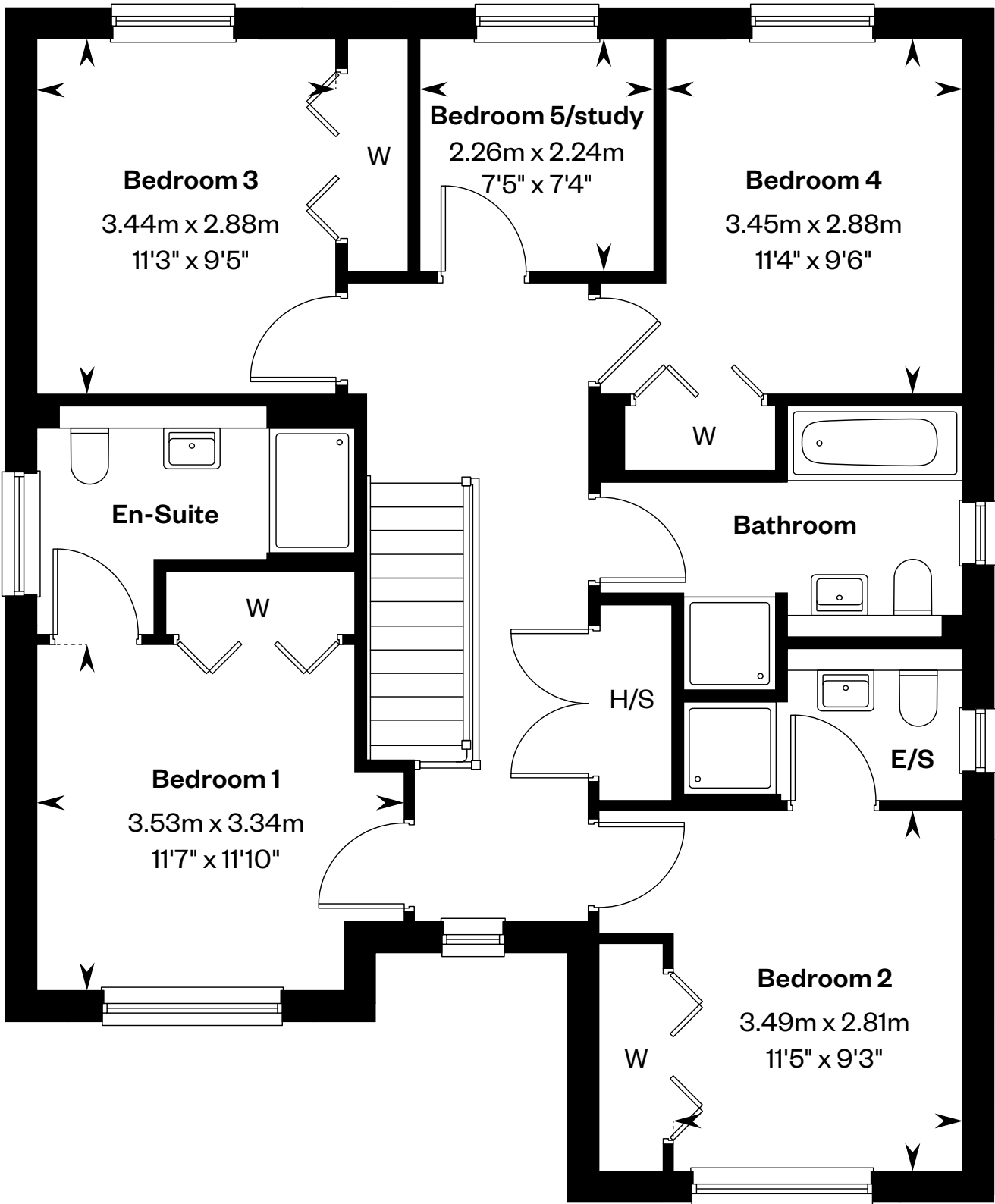
Plot 157 – as shown



This is a Predicted Energy Assessment for properties that are incomplete. Once the property is completed, this rating will be updated and an official Energy Performance certificate will be created for the property.



Ground floor



First floor

E/S: En-Suite. H/S: Heating source cupboard. St: Store cupboard. W: Wardrobe.

IMPORTANT NOTICE TO CUSTOMERS: The Consumer Protection from Unfair Trading Regulations 2008. Cala Homes (East) Limited operates a policy of continual product development and the specifications outlined in this brochure are indicative only. The computer generated images and photographs do not necessarily represent the actual finishings/elevation or treatments, landscaping, furnishings and fittings at this development. Information contained is accurate at date of publication on 22.04.25. See the main brochure for the full Consumer Protection statement.





# The Crichton

5 bedroom detached home

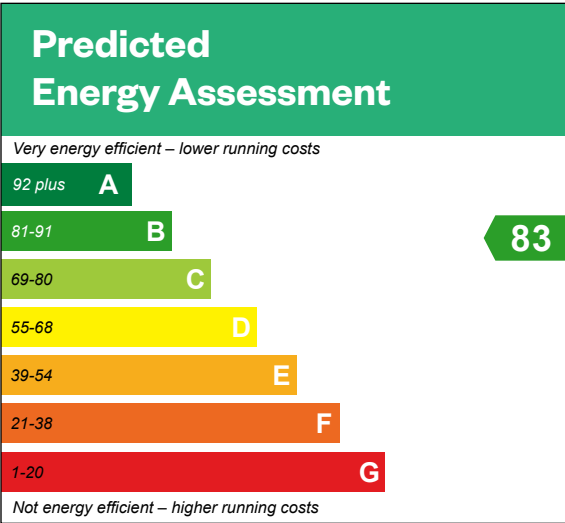




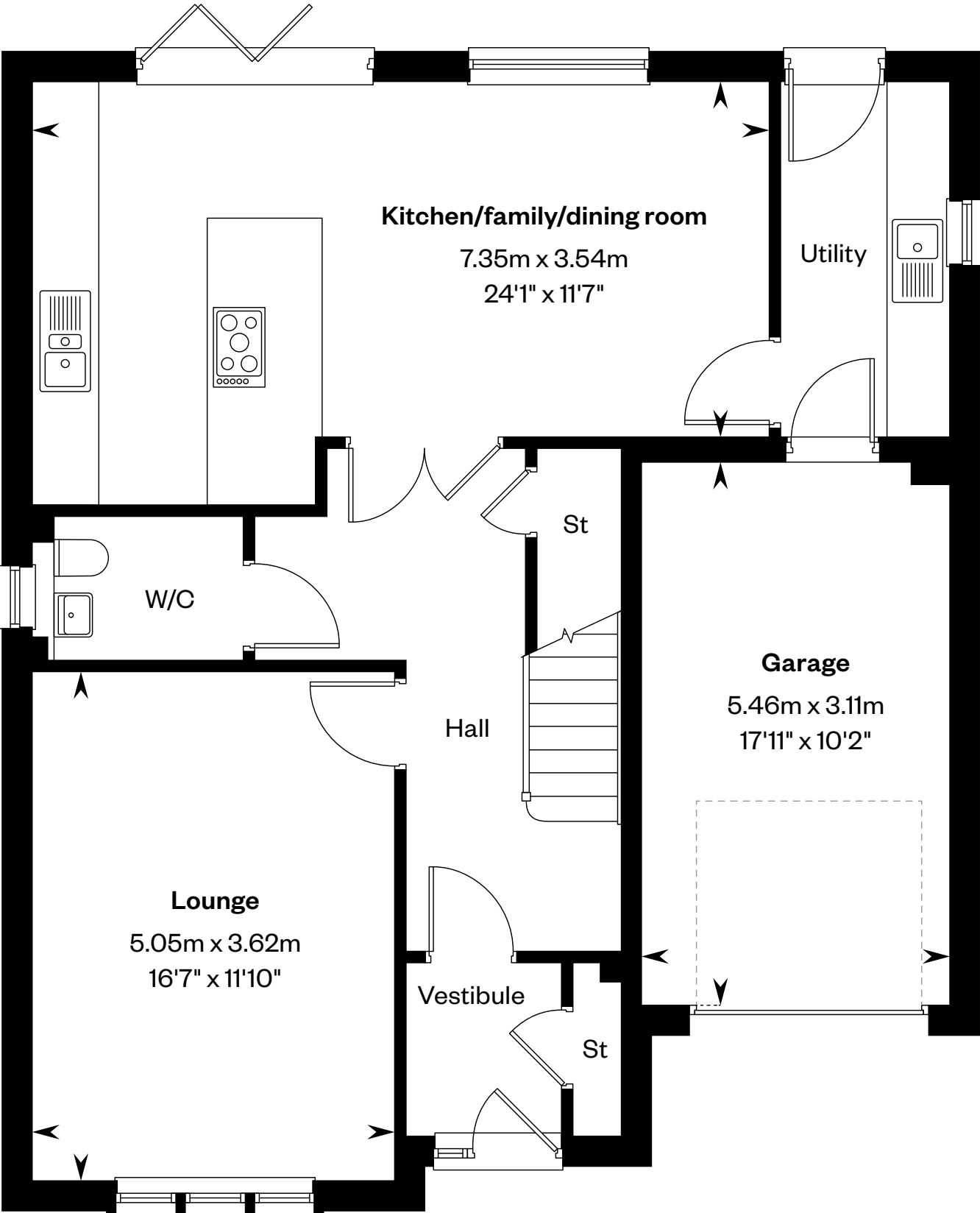
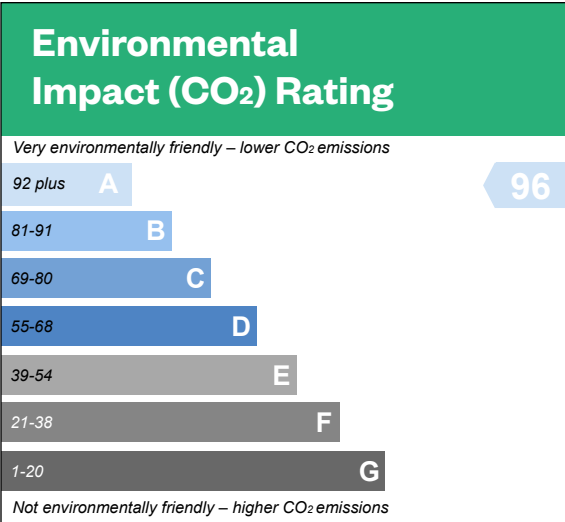
# The Crichton

5 bedroom detached home

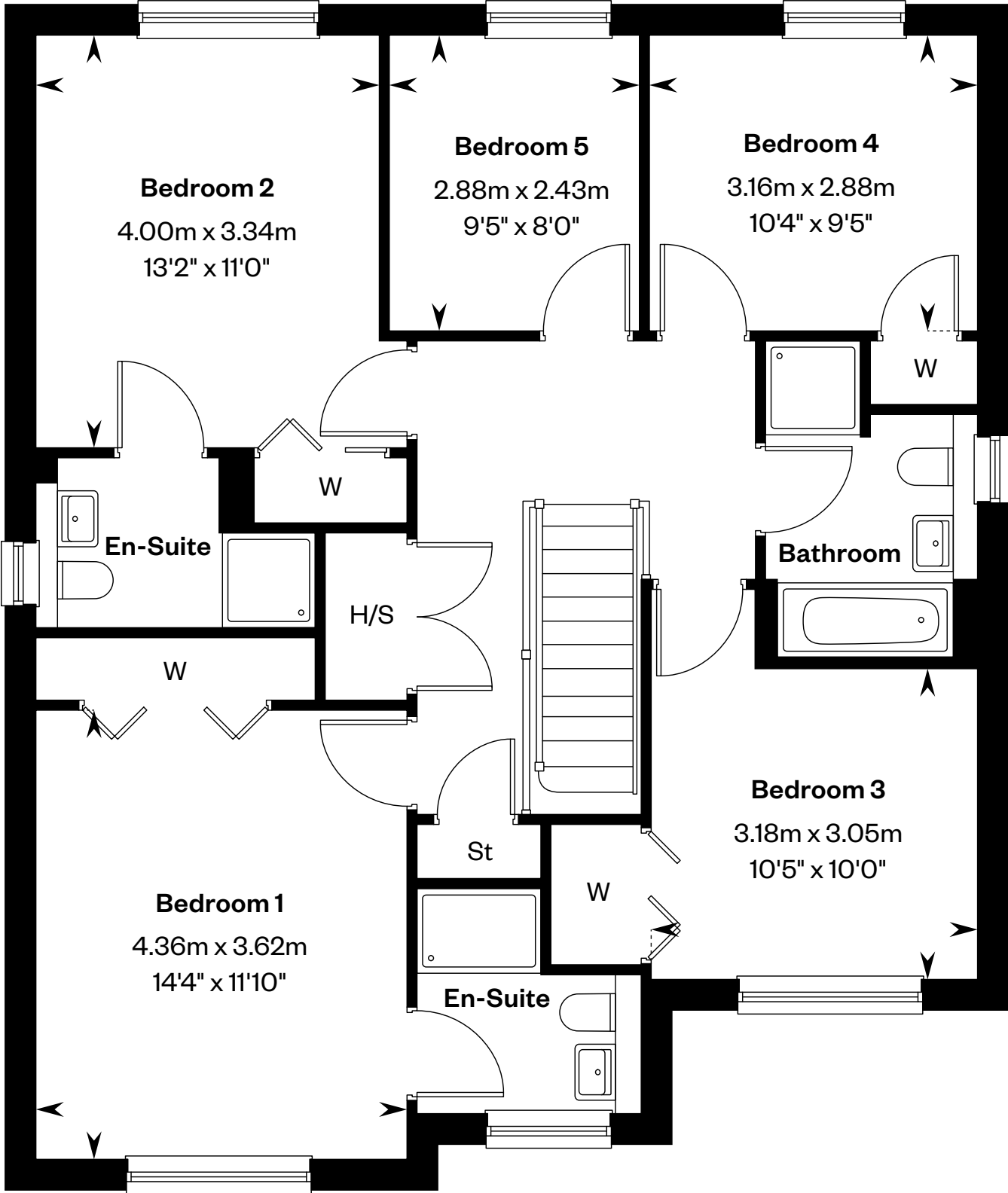
Plot 158 – as shown



This is a Predicted Energy Assessment for properties that are incomplete. Once the property is completed, this rating will be updated and an official Energy Performance certificate will be created for the property.



Ground floor



First floor

H/S: Heating source cupboard. St: Store cupboard. W: Wardrobe.

IMPORTANT NOTICE TO CUSTOMERS: The Consumer Protection from Unfair Trading Regulations 2008. Cala Homes (East) Limited operates a policy of continual product development and the specifications outlined in this brochure are indicative only. The computer generated images and photographs do not necessarily represent the actual finishings/elevation or treatments, landscaping, furnishings and fittings at this development. Information contained is accurate at date of publication on 22.04.25. See the main brochure for the full Consumer Protection statement.





# The Milne

5 bedroom detached home with detached single garage



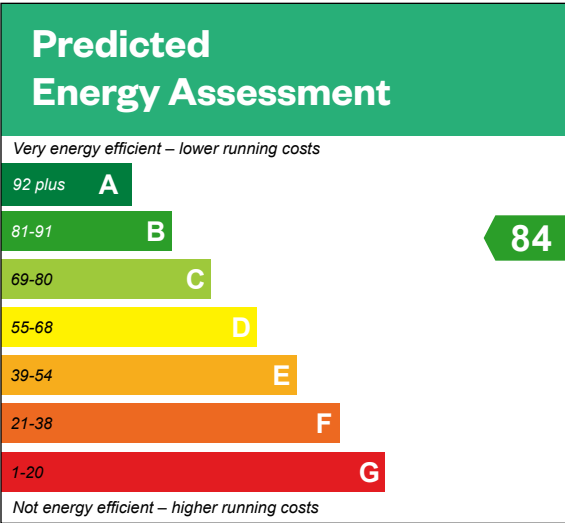


# The Milne

5 bedroom detached home with detached single garage

Plots 160, 162 & 163 – as shown

Plot 166 – handed







# The McNeil

5 bedroom detached home with detached single garage



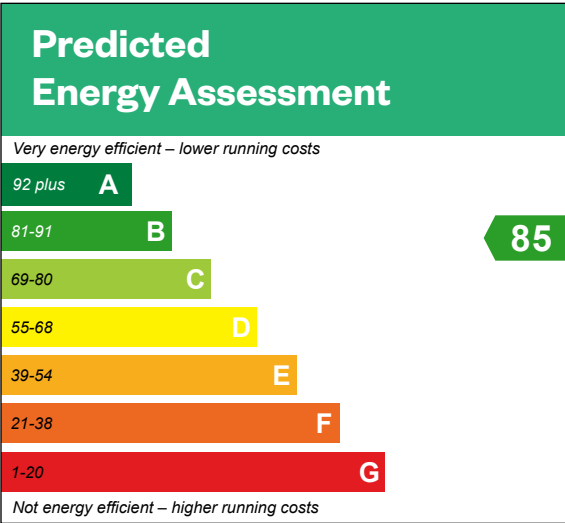


# The McNeil

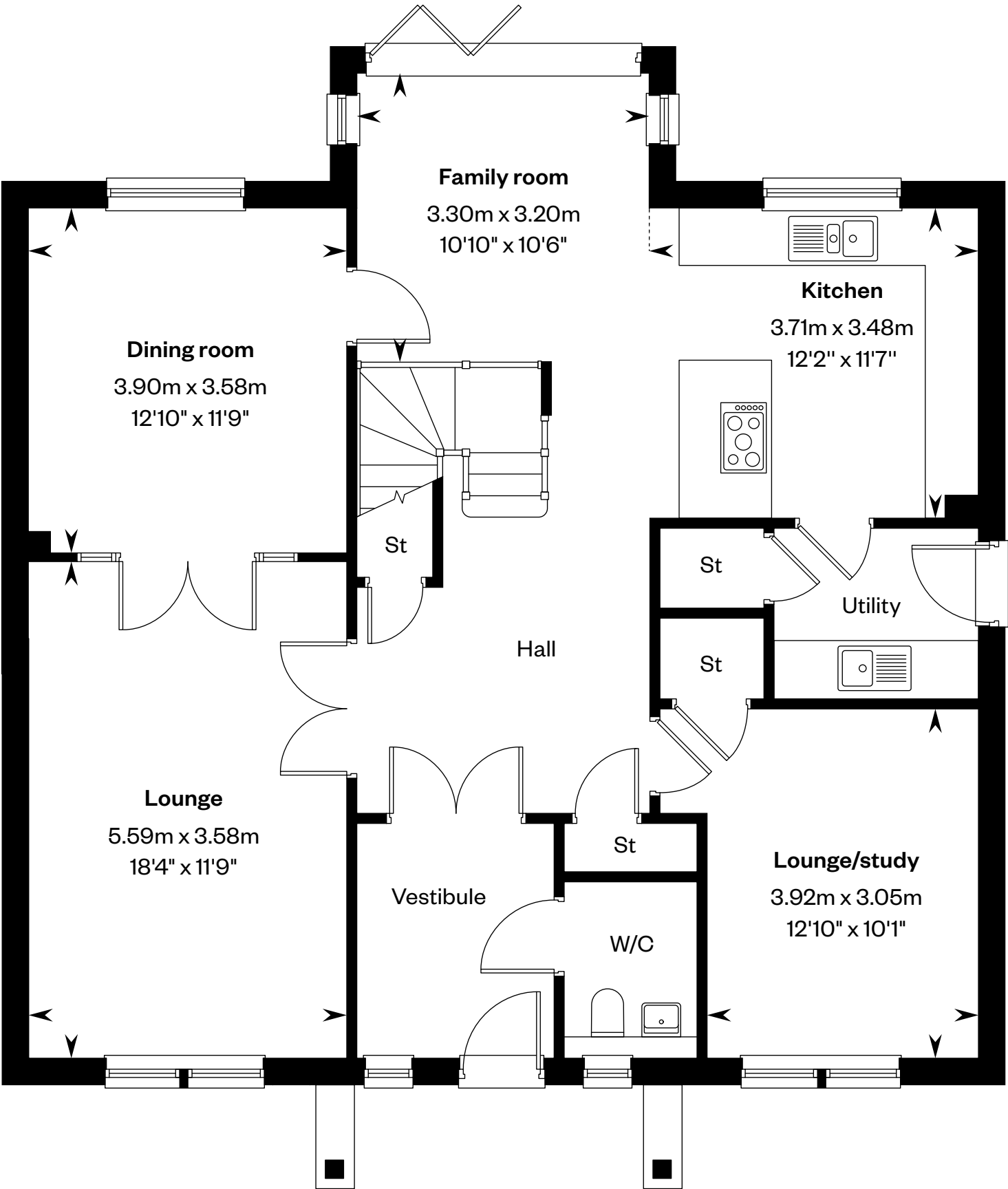
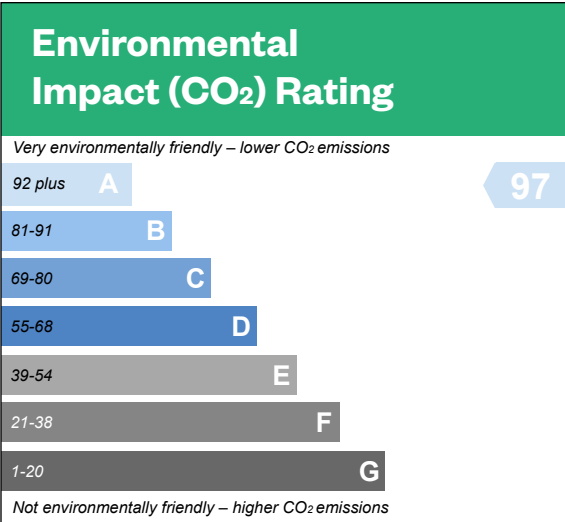
5 bedroom detached home with detached single garage

Plot 165 – as shown

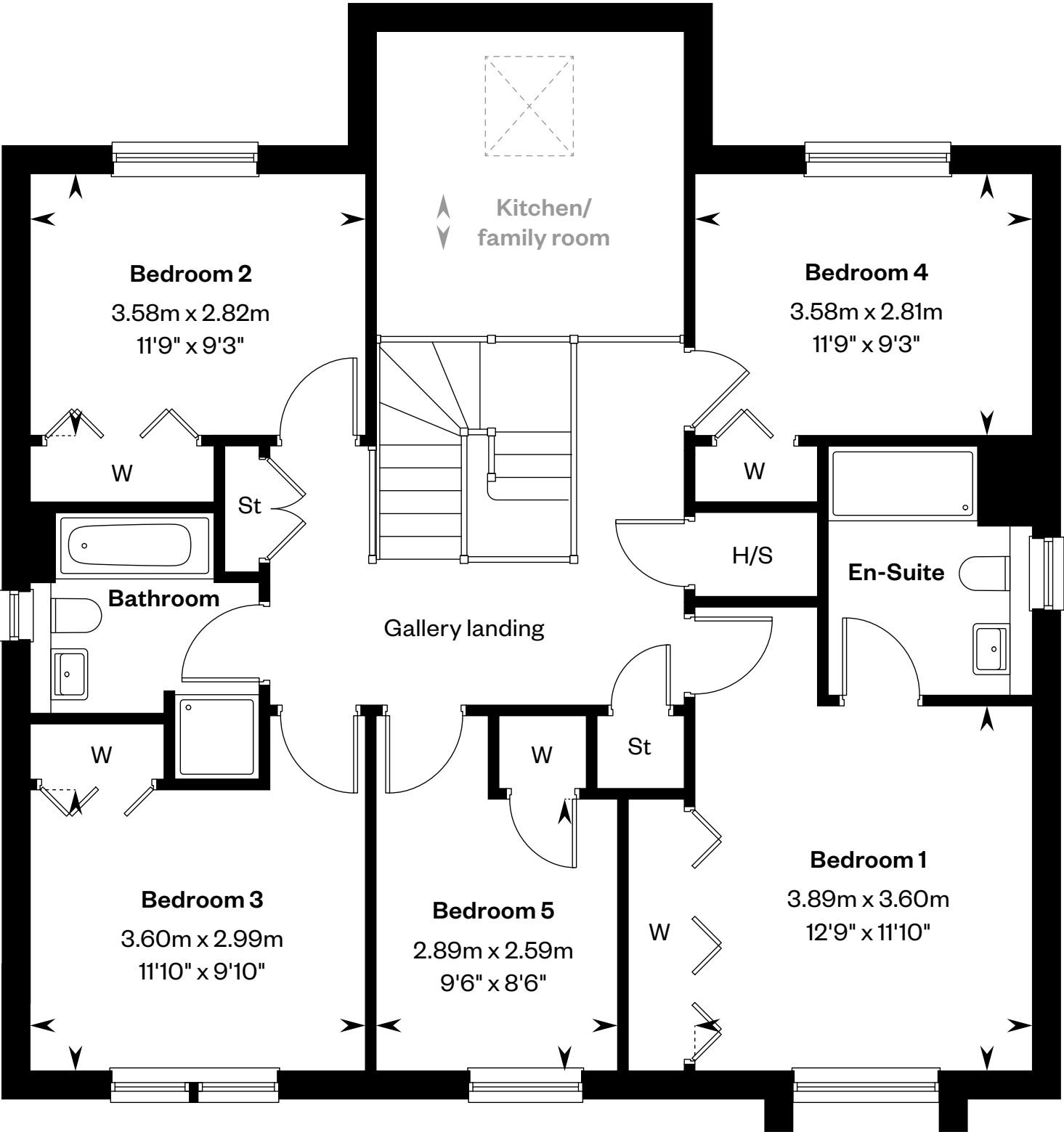
Plots 159, 161 & 164 – handed



This is a Predicted Energy Assessment for properties that are incomplete. Once the property is completed, this rating will be updated and an official Energy Performance certificate will be created for the property.



Ground floor



First floor

H/S: Heating source cupboard. St: Store cupboard. W: Wardrobe. : Roof light/velux window. : Double height ceiling.

IMPORTANT NOTICE TO CUSTOMERS: The Consumer Protection from Unfair Trading Regulations 2008. Cala Homes (East) Limited operates a policy of continual product development and the specifications outlined in this brochure are indicative only. The computer generated images and photographs do not necessarily represent the actual finishings/elevation or treatments, landscaping, furnishings and fittings at this development. Information contained is accurate at date of publication on 22.04.25. See the main brochure for the full Consumer Protection statement.