



The Adam

2 bedroom mid terraced or
semi detached home



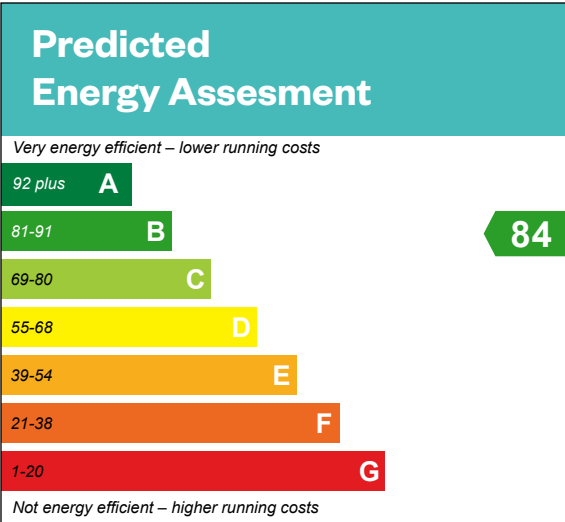
Computer generated image - The Adam

The Adam

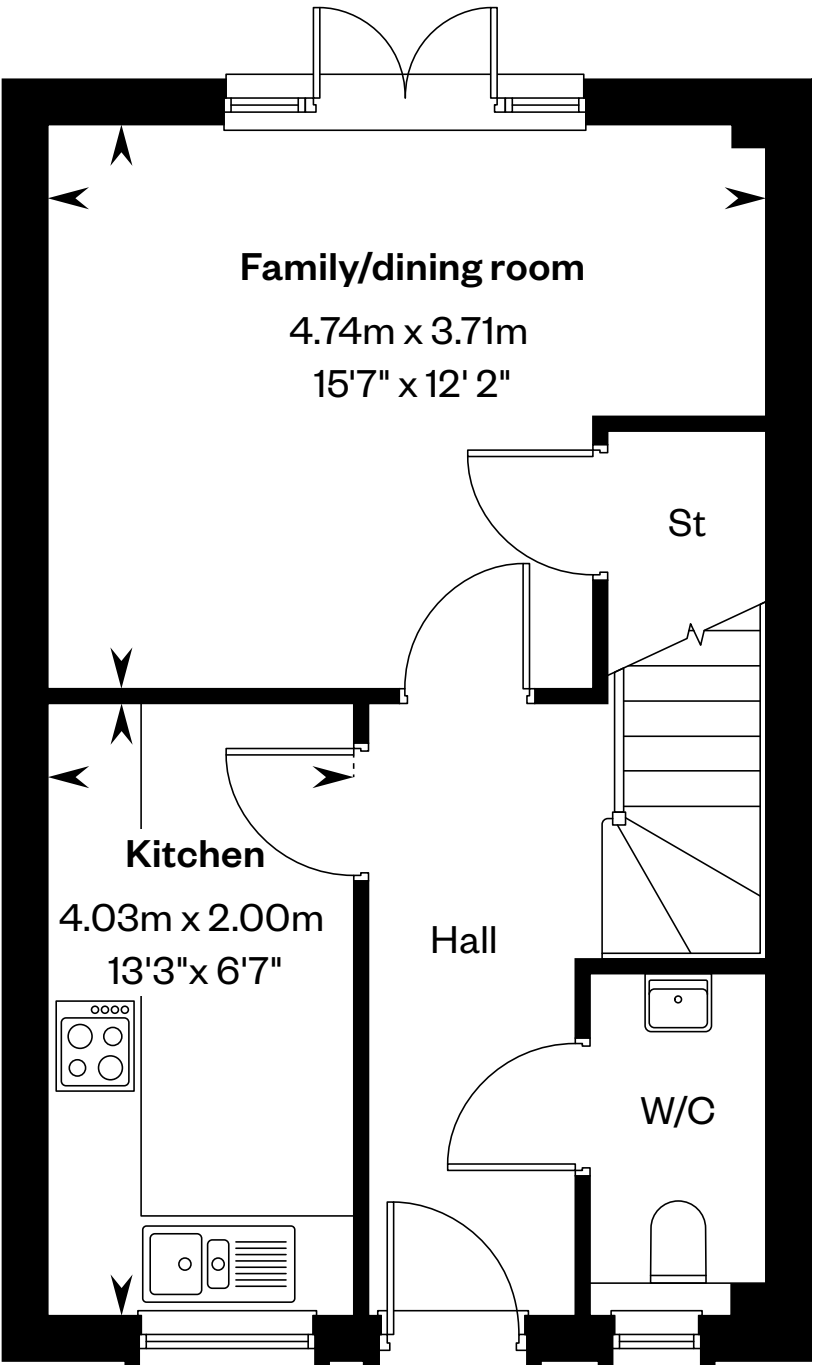
2 bedroom mid terraced or semi detached home

Plots 77, 79, 153 & 156 – as shown

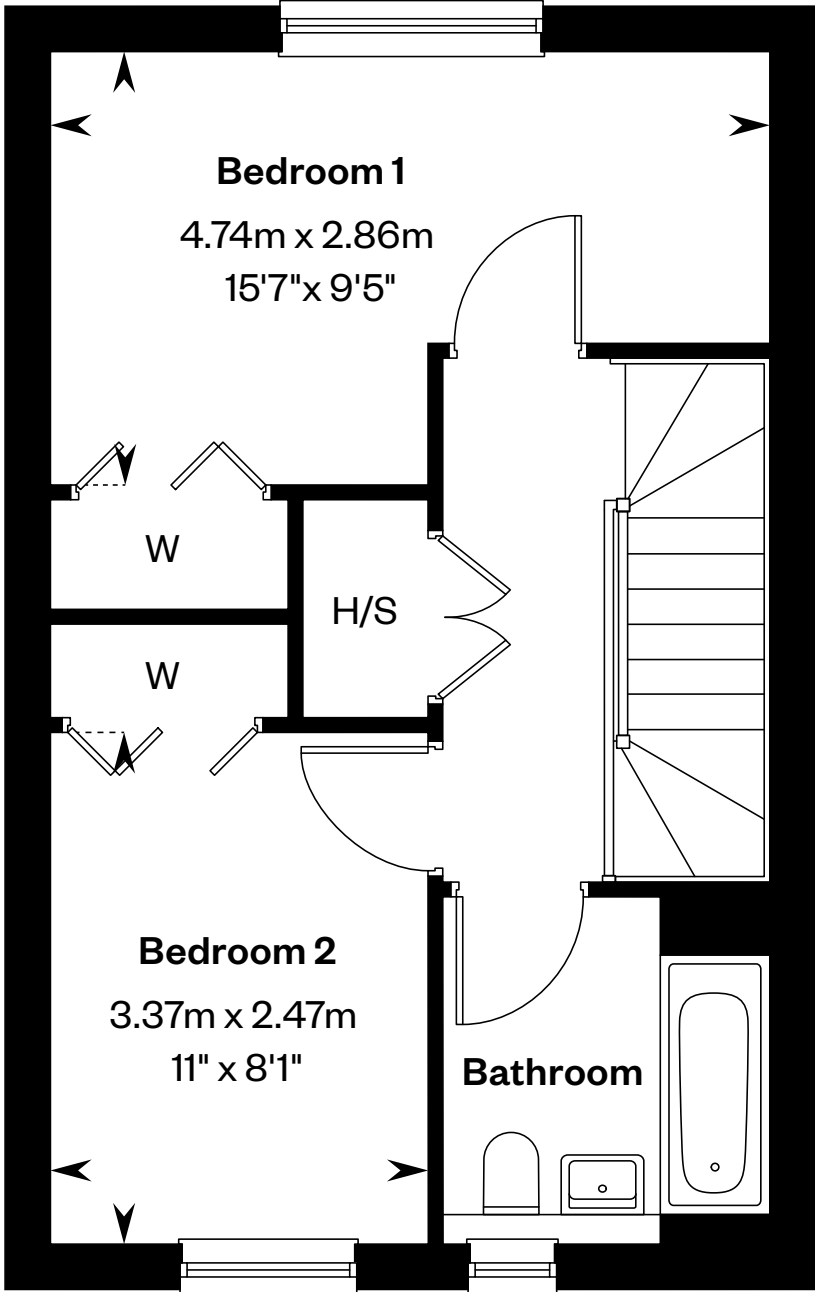
Plots 78, 80, 152, 154 & 155 – handed



This is a Predicted Energy Assessment for properties that are incomplete. Once the property is completed, this rating will be updated and an official Energy Performance certificate will be created for the property.



Ground floor



First floor

H/S: Heating source cupboard. St: Store cupboard. W: Wardrobe.

IMPORTANT NOTICE TO CUSTOMERS: The Consumer Protection from Unfair Trading Regulations 2008. Cala Homes (West) Limited operates a policy of continual product development and the specifications outlined in this brochure are indicative only. The computer generated images and photographs do not necessarily represent the actual finishings/elevation or treatments, landscaping, furnishings and fittings at this development. Information contained is accurate at date of publication on 19.06.25. See the main brochure for the full Consumer Protection statement.



The Allan

3 bedroom mid terraced home



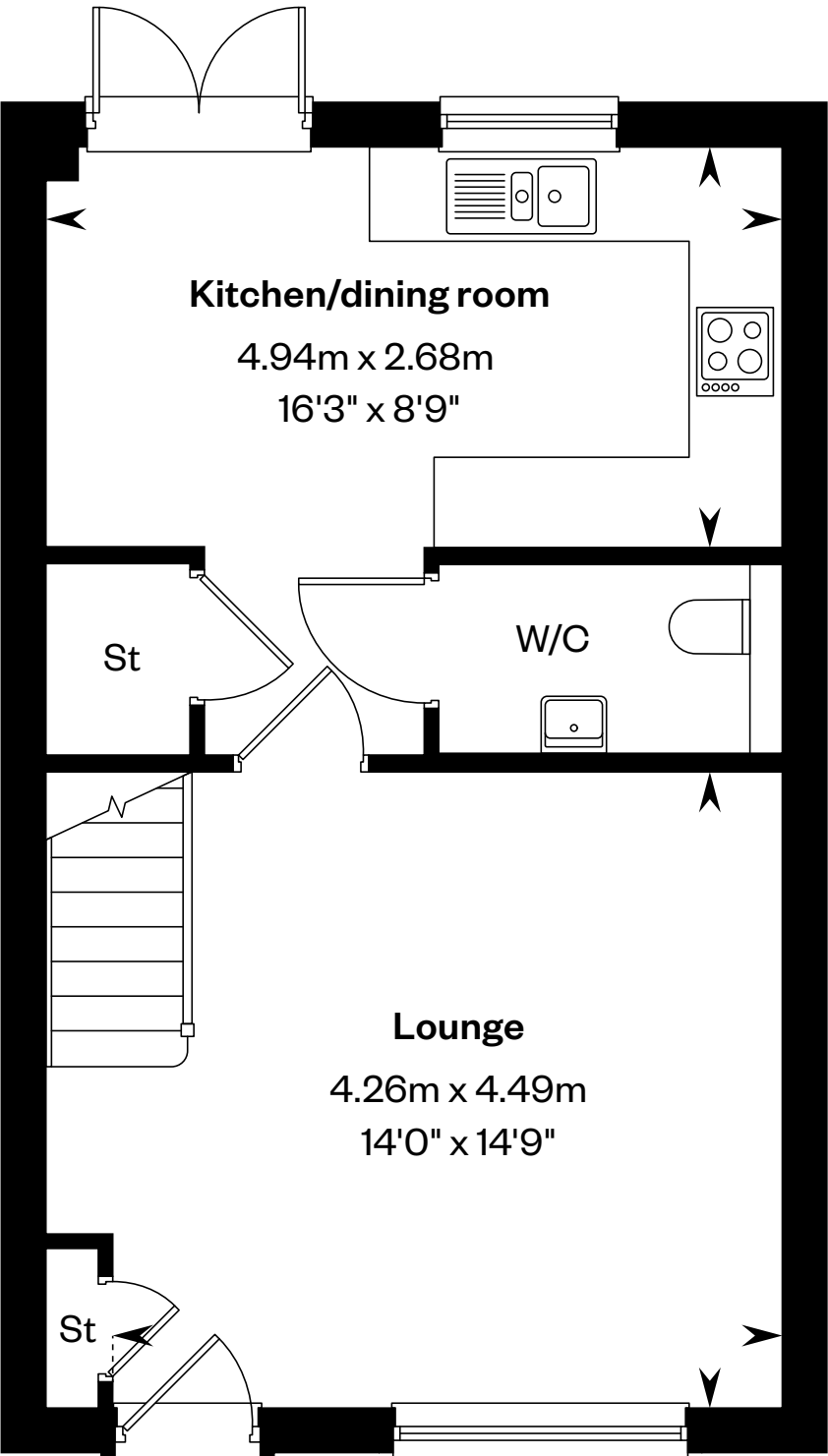
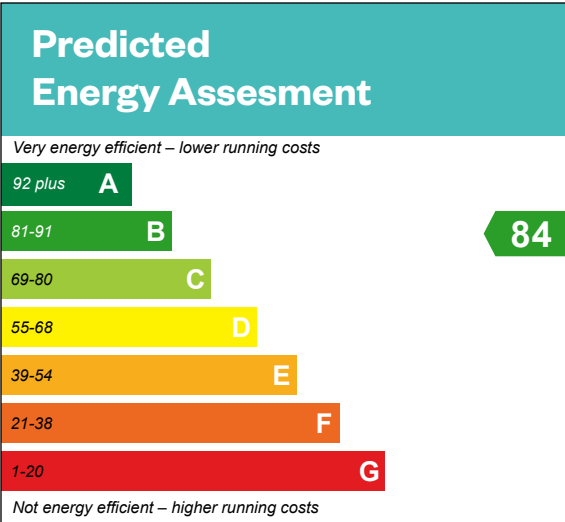
Computer generated image - The Allan

The Allan

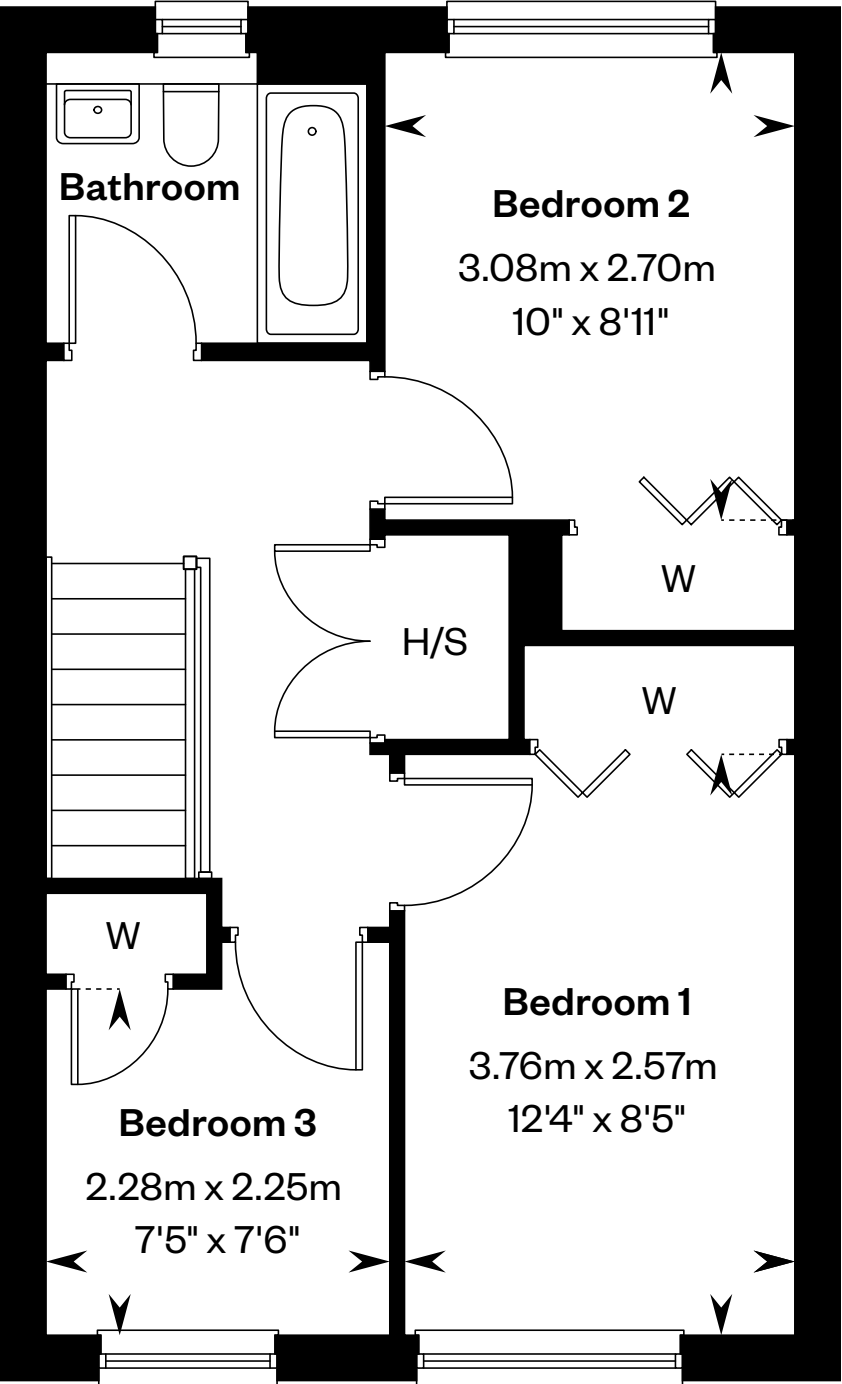
3 bedroom mid terraced home

Plots 132, 133 & 148 – as shown

Plots 131 & 149 – handed



Ground floor



First floor

H/S: Heating source cupboard. St: Store cupboard. W: Wardrobe.

IMPORTANT NOTICE TO CUSTOMERS: The Consumer Protection from Unfair Trading Regulations 2008. Cala Homes (West) Limited operates a policy of continual product development and the specifications outlined in this brochure are indicative only. The computer generated images and photographs do not necessarily represent the actual finishings/elevation or treatments, landscaping, furnishings and fittings at this development. Information contained is accurate at date of publication on 19.06.25. See the main brochure for the full Consumer Protection statement.



The Arisaig

3 bedroom terraced or
semi detached home



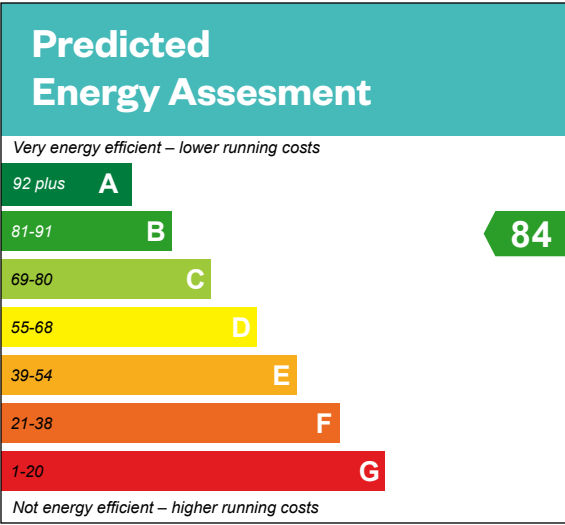
Computer generated image - The Arisaig

The Arisaig

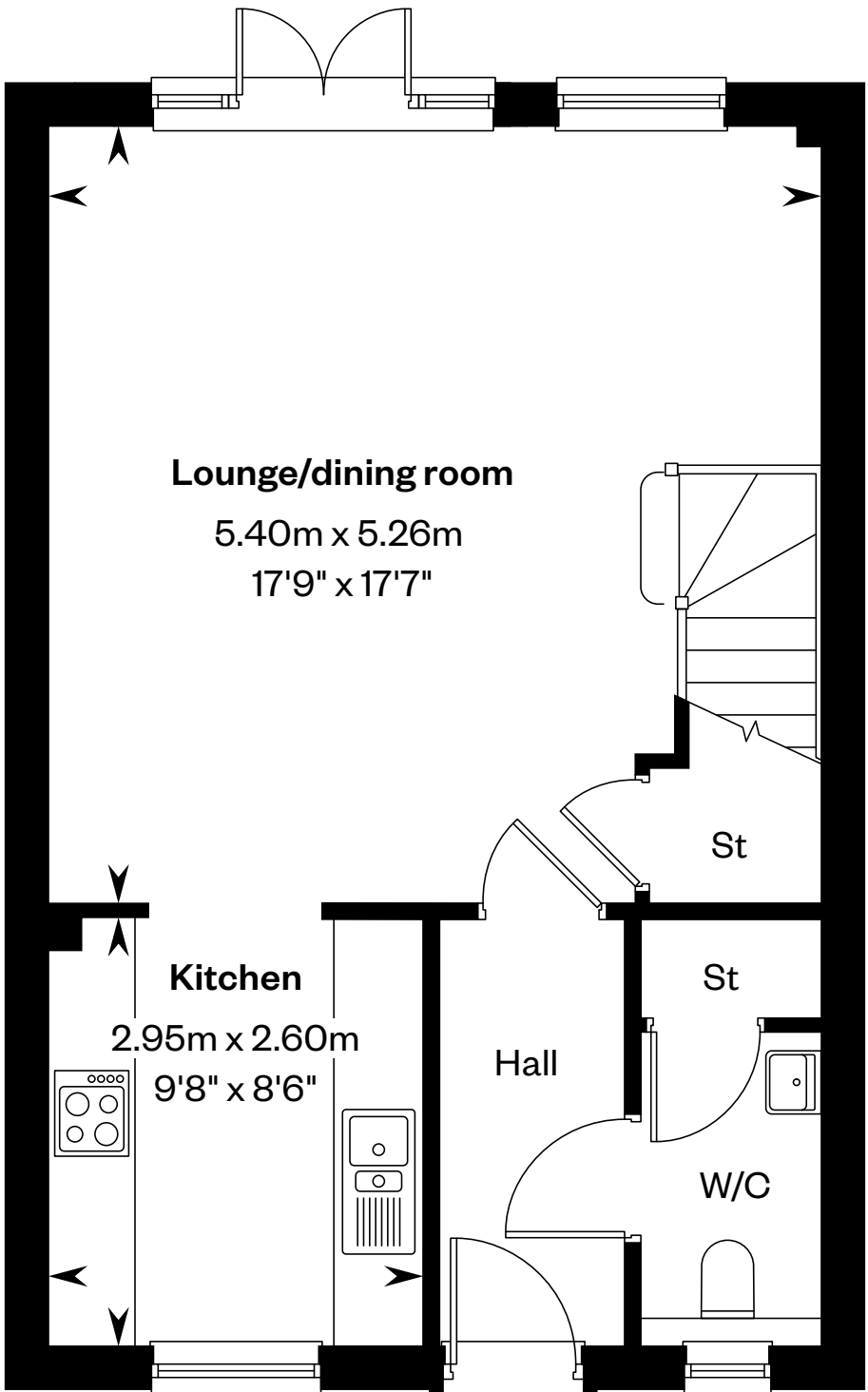
3 bedroom terraced or semi detached home

Plots 76, 111, 112, 113, 128, 179 & 189 – as shown

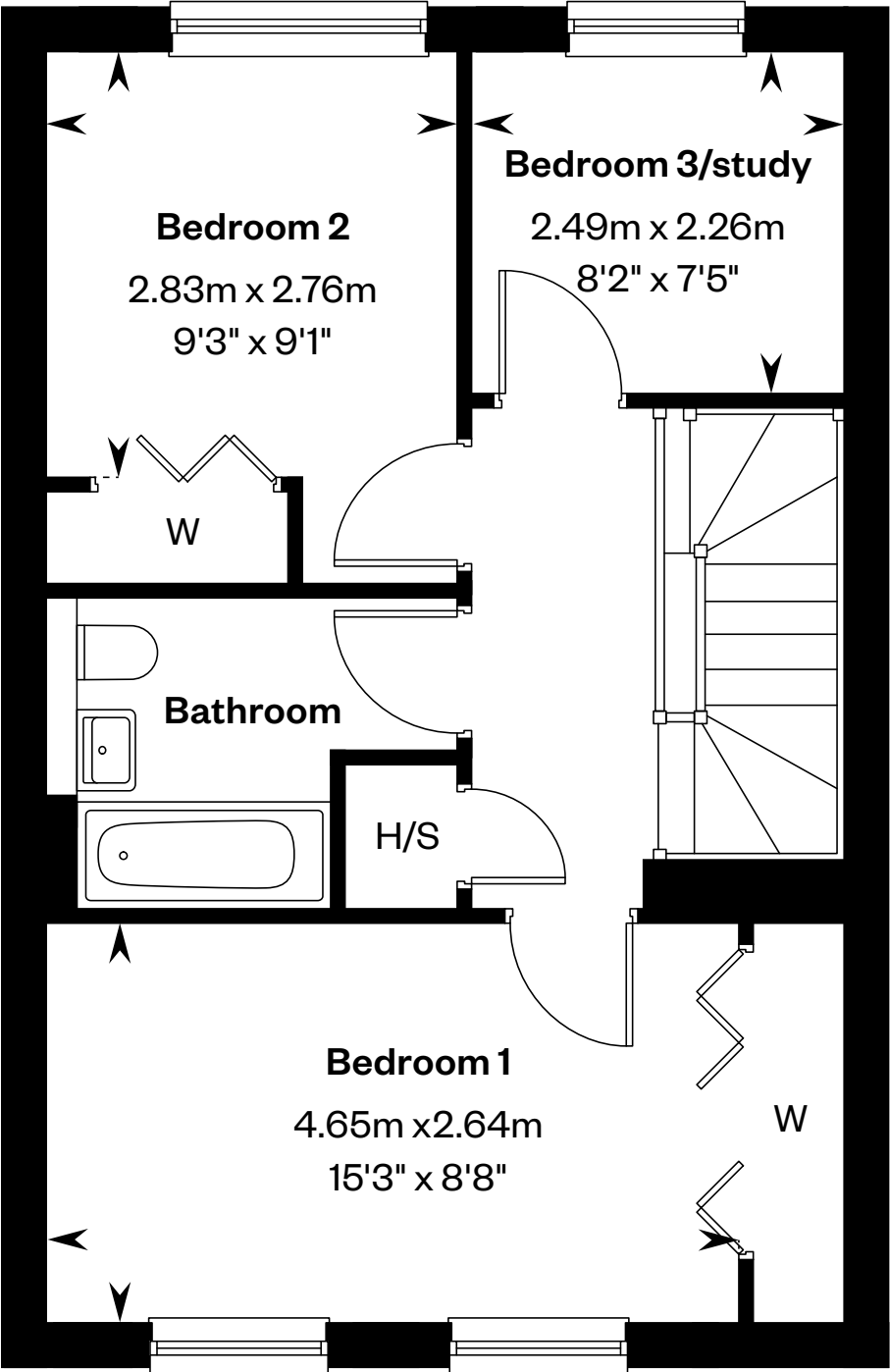
Plots 81, 109, 110, 114, 127, 176, 182 & 190 – handed



This is a Predicted Energy Assessment for properties that are incomplete. Once the property is completed, this rating will be updated and an official Energy Performance certificate will be created for the property.



Ground floor



First floor

H/S: Heating source cupboard. St: Store cupboard. W: Wardrobe.

IMPORTANT NOTICE TO CUSTOMERS: The Consumer Protection from Unfair Trading Regulations 2008. Cala Homes (West) Limited operates a policy of continual product development and the specifications outlined in this brochure are indicative only. The computer generated images and photographs do not necessarily represent the actual finishings/elevation or treatments, landscaping, furnishings and fittings at this development. Information contained is accurate at date of publication on 19.06.25. See the main brochure for the full Consumer Protection statement.



The Avon

3 bedroom terraced or semi detached home

The Avon



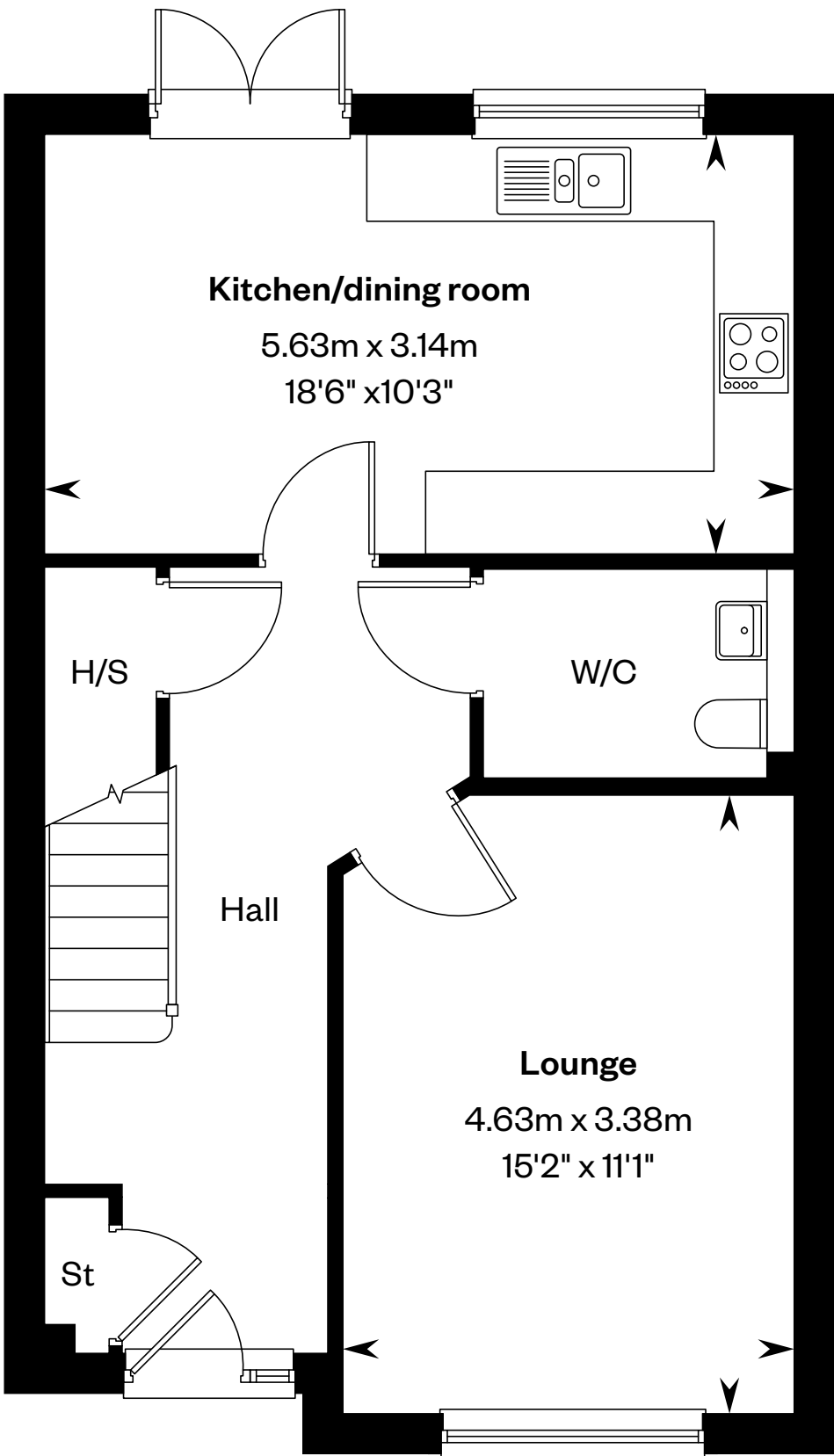
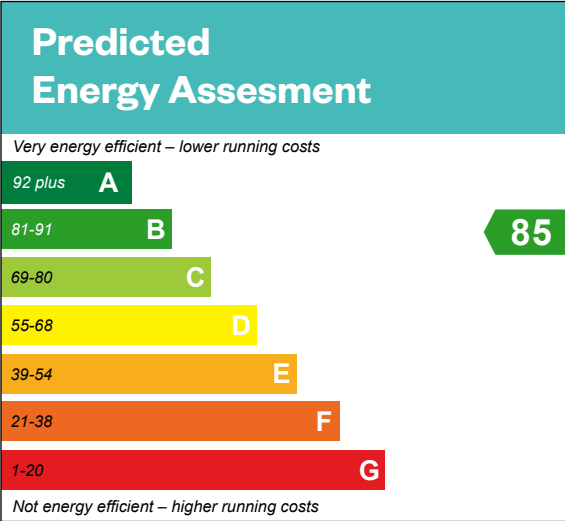
Computer generated image - The Avon

The Avon

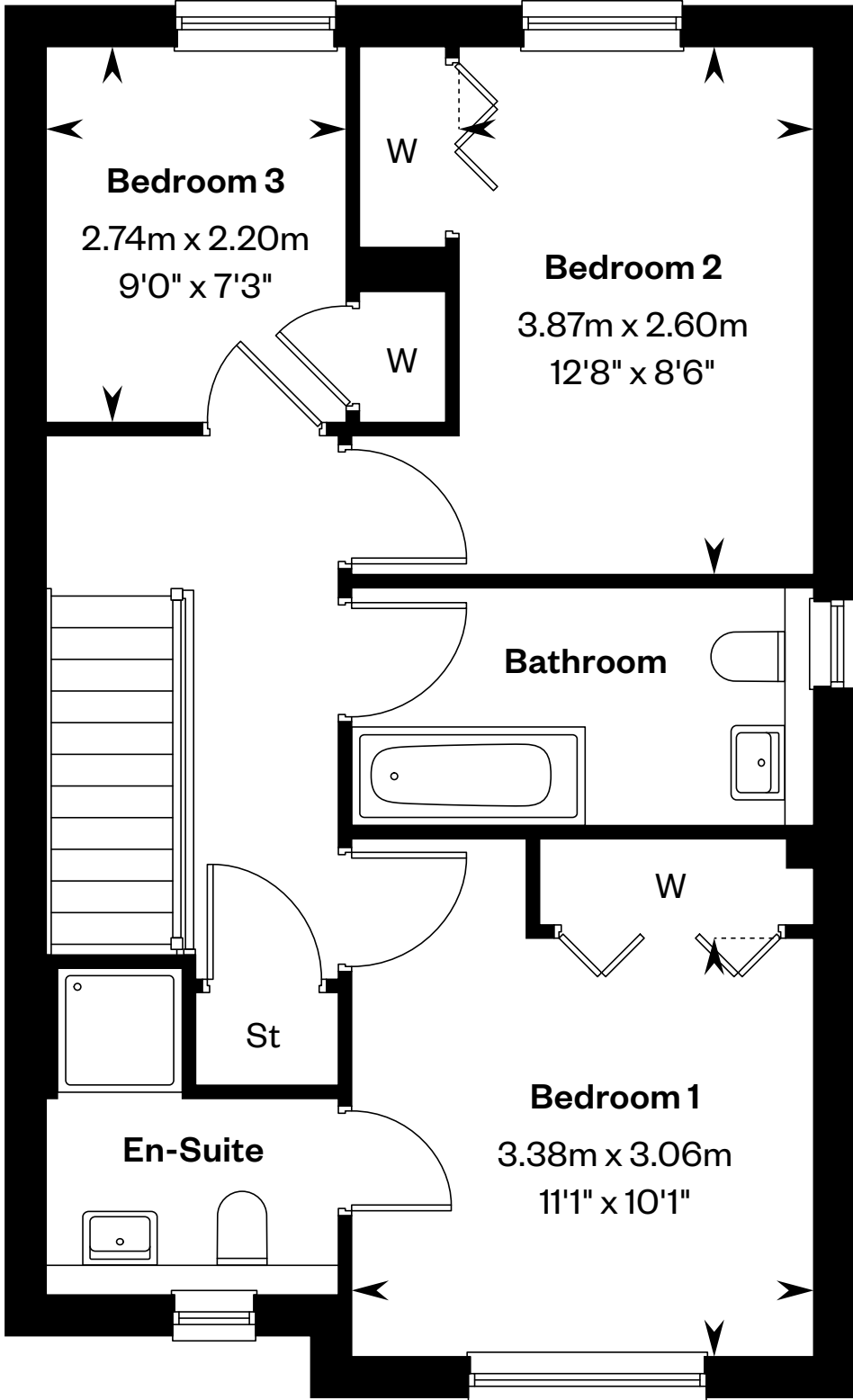
3 bedroom terraced or semi detached home

Plots 71, 73, 82, 125, 129, 134, 147, 151, 177, 180, 183 & 188 – as shown

Plots 72, 74, 83, 124, 126, 130, 150, 157, 175, 178, 181 & 191 – handed



Ground floor



First floor

H/S: Heating source cupboard. St: Store cupboard. W: Wardrobe.

IMPORTANT NOTICE TO CUSTOMERS: The Consumer Protection from Unfair Trading Regulations 2008. Cala Homes (West) Limited operates a policy of continual product development and the specifications outlined in this brochure are indicative only. The computer generated images and photographs do not necessarily represent the actual finishings/elevation or treatments, landscaping, furnishings and fittings at this development. Information contained is accurate at date of publication on 19.06.25. See the main brochure for the full Consumer Protection statement.



The Bowden

3 bedroom mid terraced home



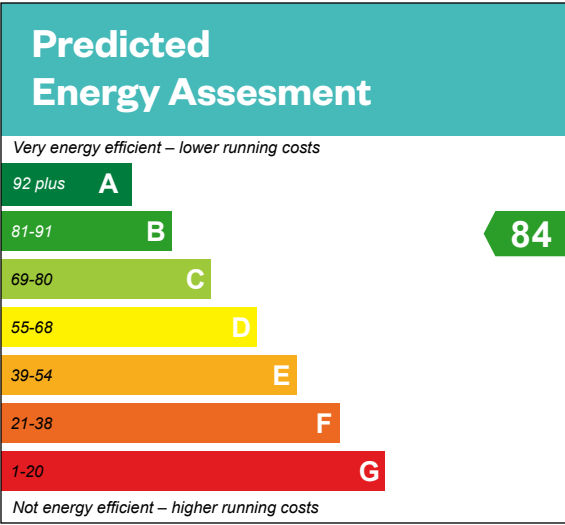
Computer generated image - The Bowden

The Bowden

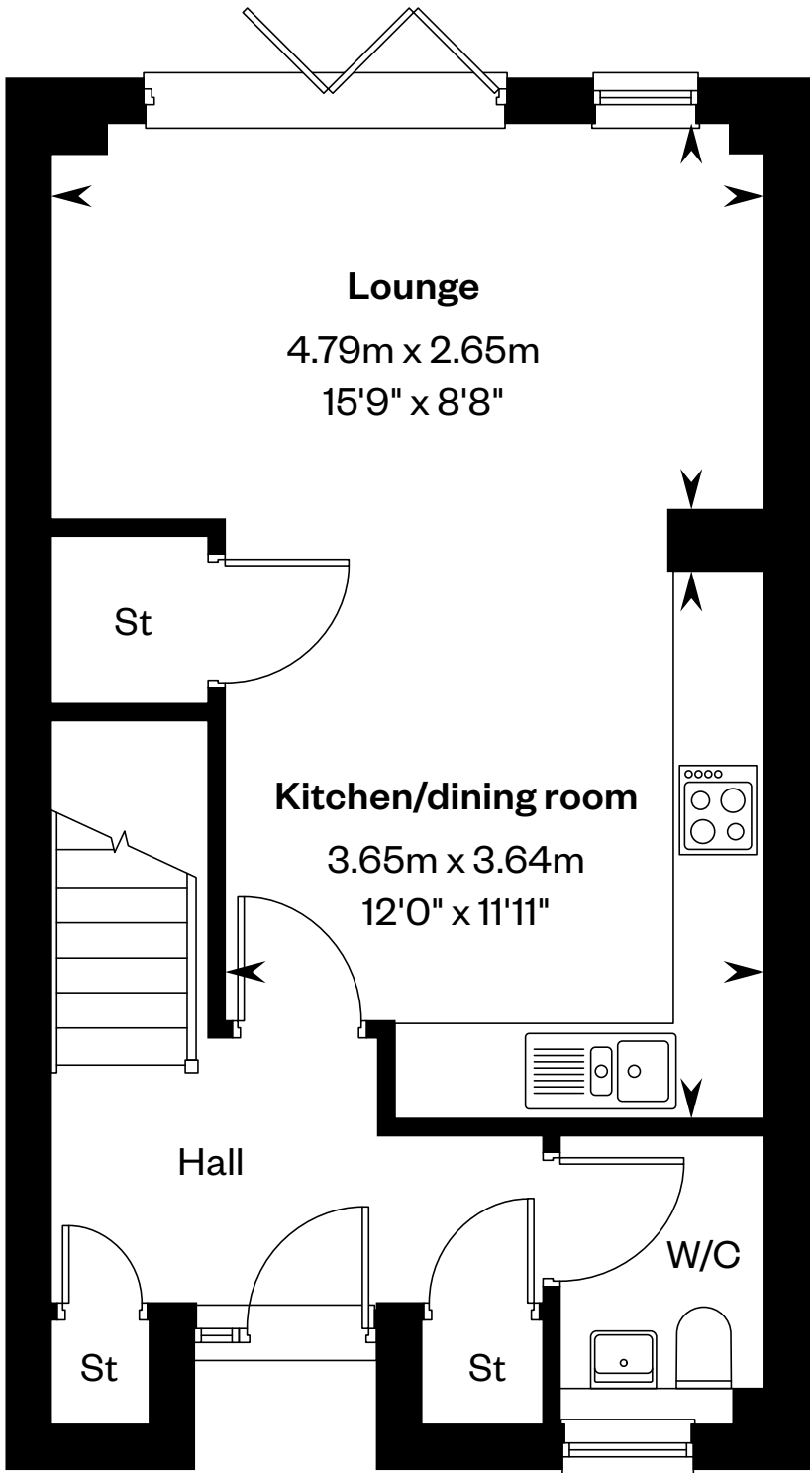
3 bedroom mid terraced home

Plots 93, 97, 100, 159 & 164 – as shown

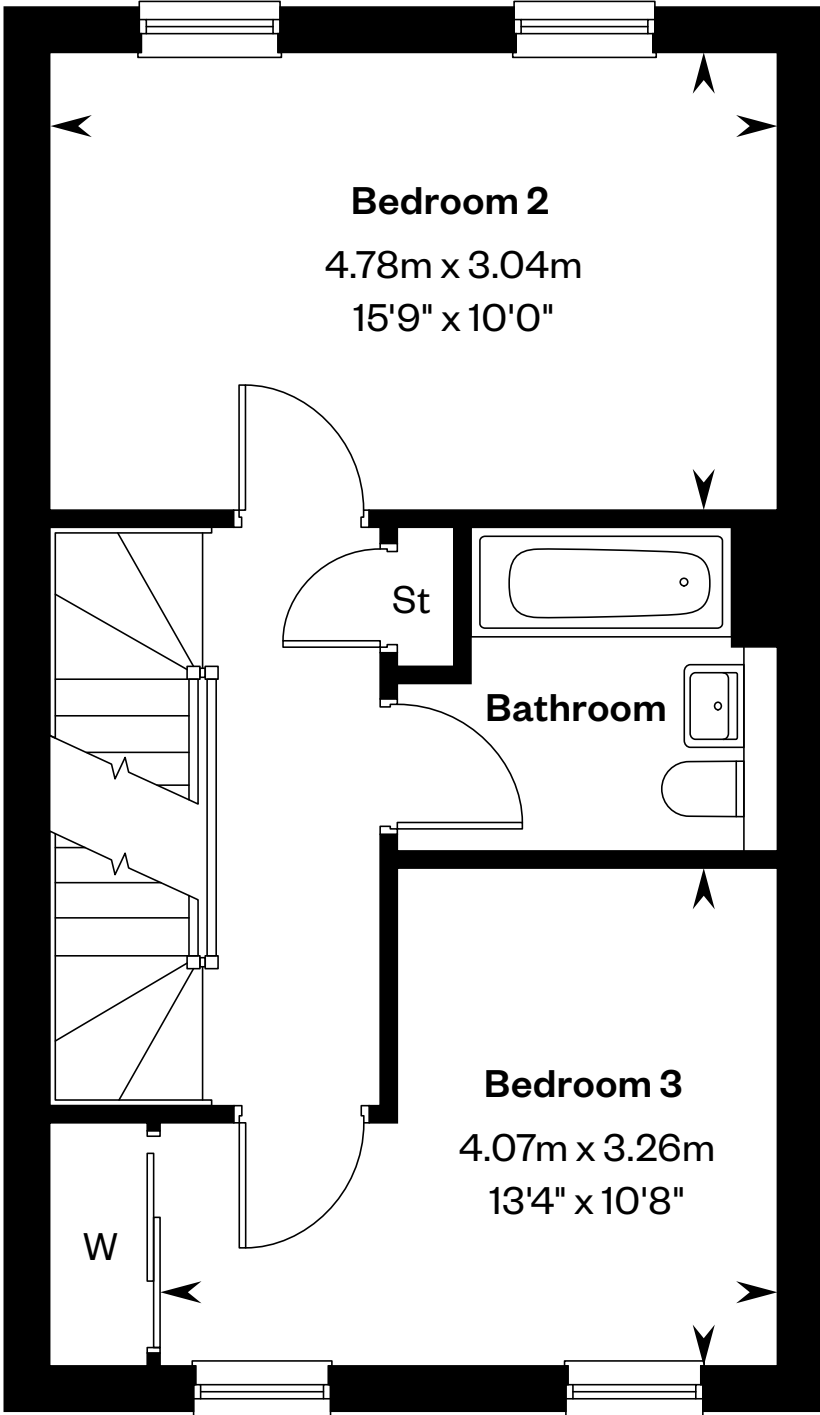
Plots 92, 96, 101, 160, 161 & 165 – handed



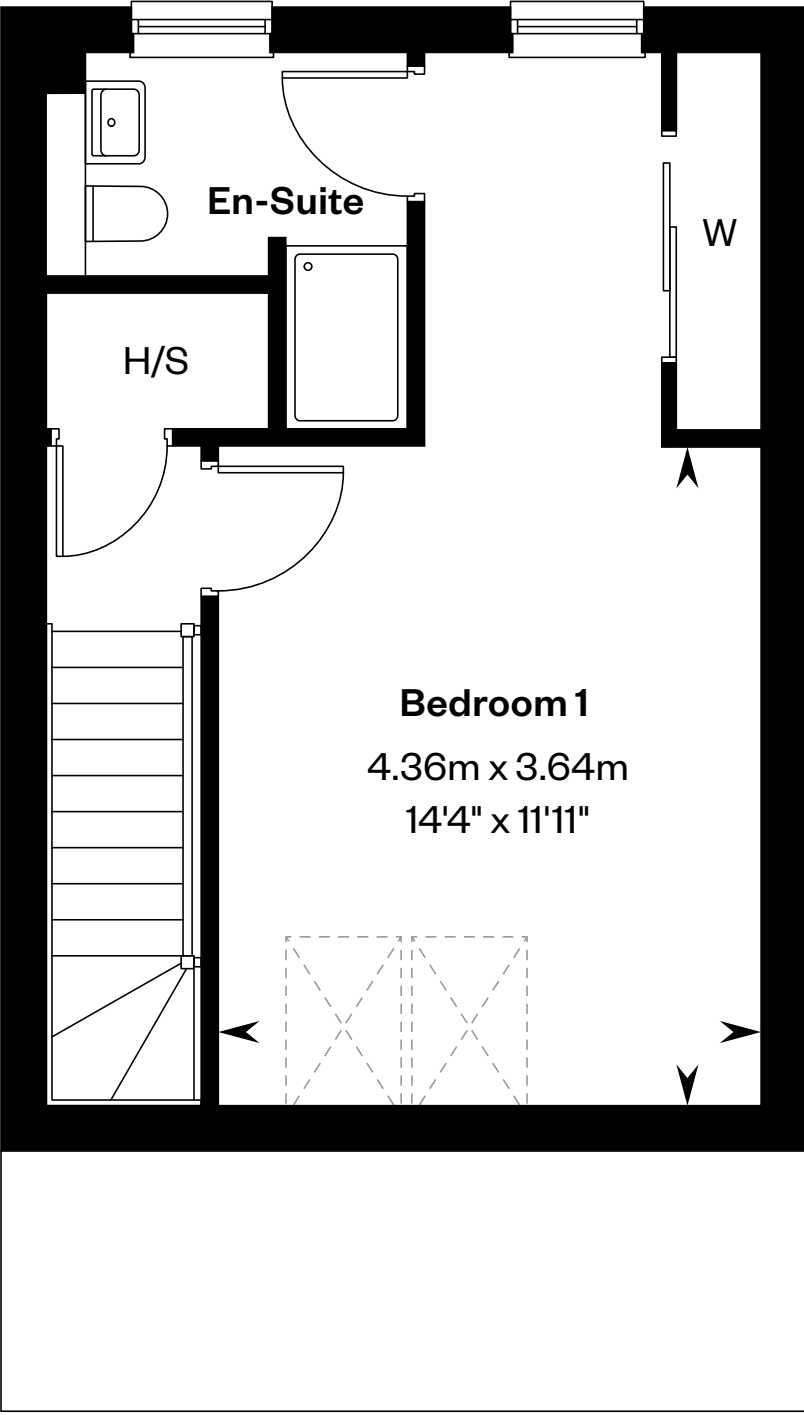
This is a Predicted Energy Assessment for properties that are incomplete. Once the property is completed, this rating will be updated and an official Energy Performance certificate will be created for the property.




Ground floor



First floor



Second floor

H/S: Heating source cupboard. St: Store cupboard. W: Wardrobe. : Roof light/velux window.

IMPORTANT NOTICE TO CUSTOMERS: The Consumer Protection from Unfair Trading Regulations 2008. Cala Homes (West) Limited operates a policy of continual product development and the specifications outlined in this brochure are indicative only. The computer generated images and photographs do not necessarily represent the actual finishings/elevation or treatments, landscaping, furnishings and fittings at this development. Information contained is accurate at date of publication on 19.06.25. See the main brochure for the full Consumer Protection statement.



The Bargower

4 bedroom detached home



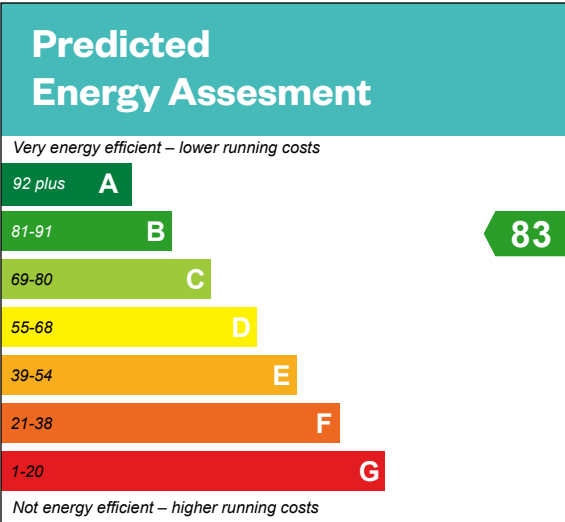
Computer generated image - The Bargower

The Bargower

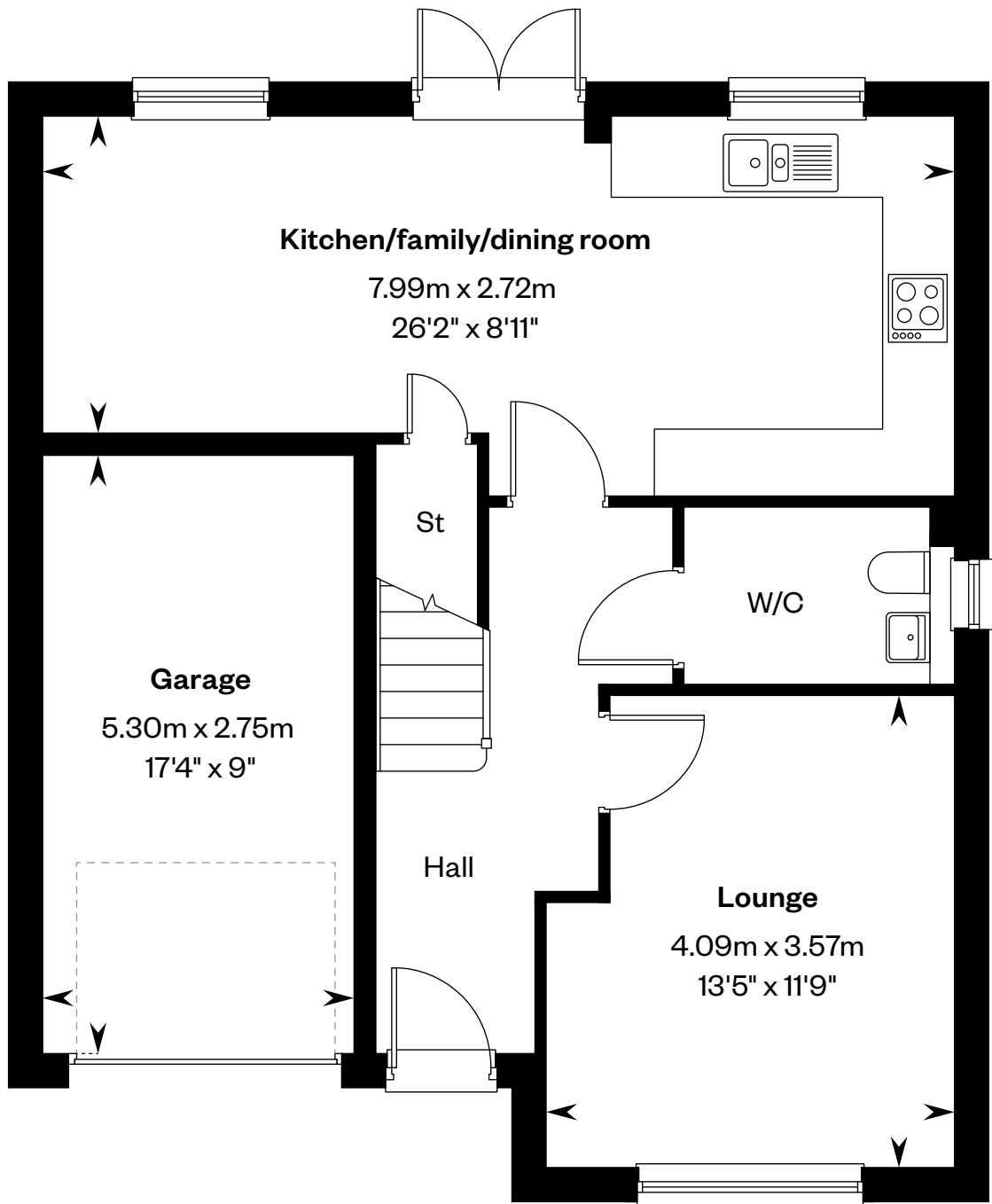
4 bedroom detached home

Plots 66, 67, 107, 123, 174 & 185 – as shown

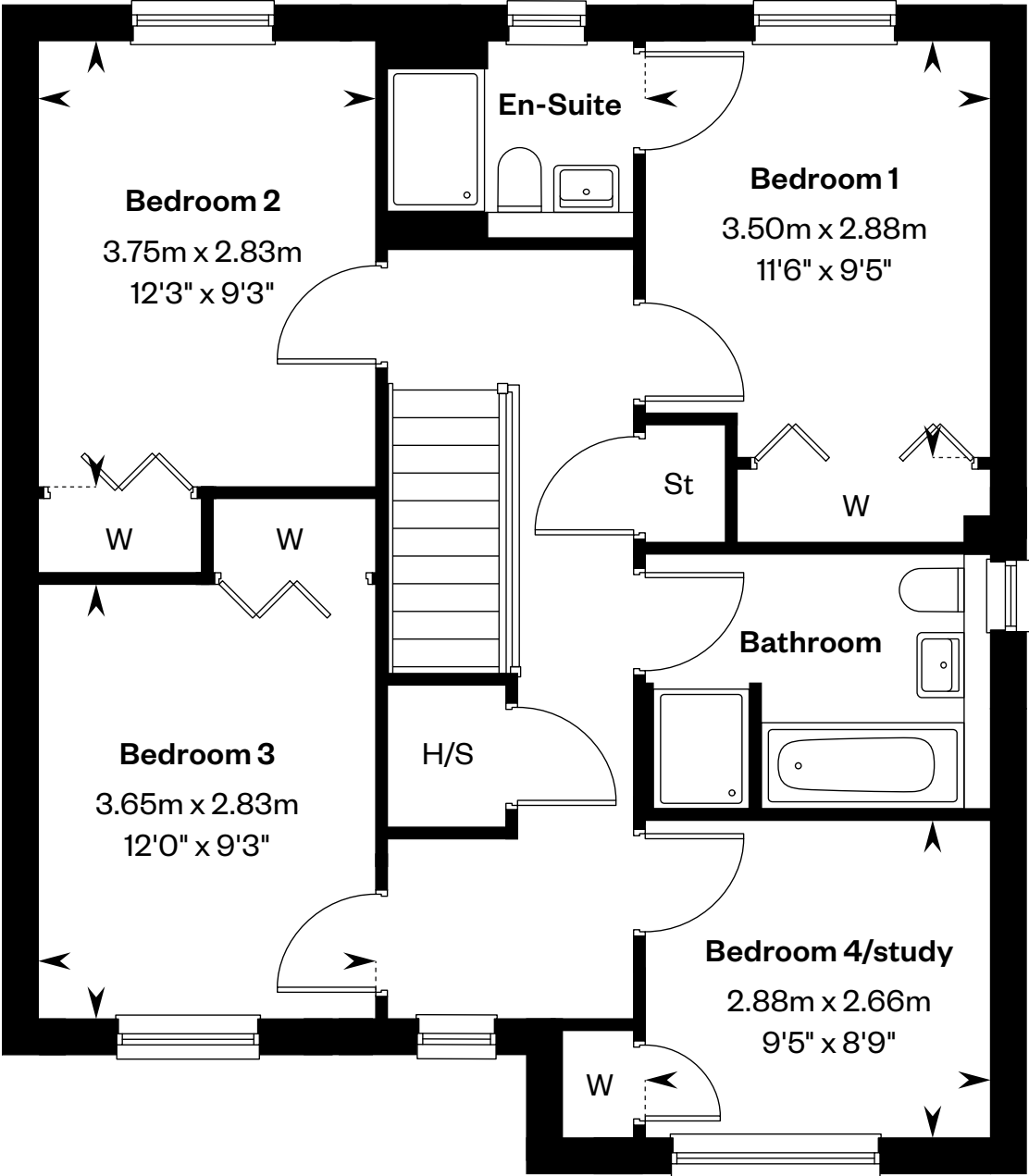
Plots 84, 106, 122, 173 & 184 – handed



This is a Predicted Energy Assessment for properties that are incomplete. Once the property is completed, this rating will be updated and an official Energy Performance certificate will be created for the property.



Ground floor



First floor

H/S: Heating source cupboard. St: Store cupboard. W: Wardrobe.

IMPORTANT NOTICE TO CUSTOMERS: The Consumer Protection from Unfair Trading Regulations 2008. Cala Homes (West) Limited operates a policy of continual product development and the specifications outlined in this brochure are indicative only. The computer generated images and photographs do not necessarily represent the actual finishings/elevation or treatments, landscaping, furnishings and fittings at this development. Information contained is accurate at date of publication on 19.06.25. See the main brochure for the full Consumer Protection statement.



The Bryce

4 bedroom detached home

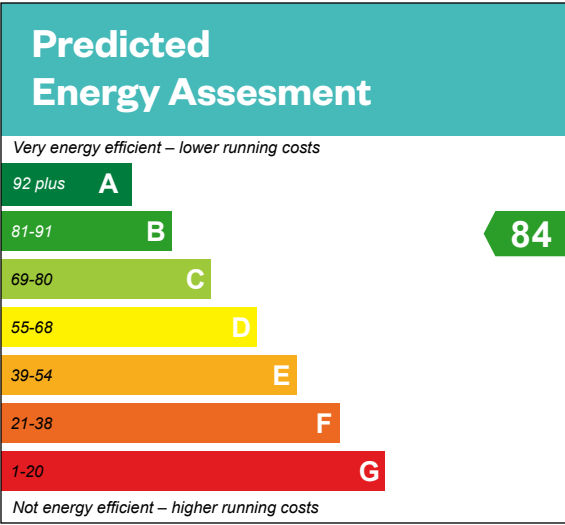


The Bryce

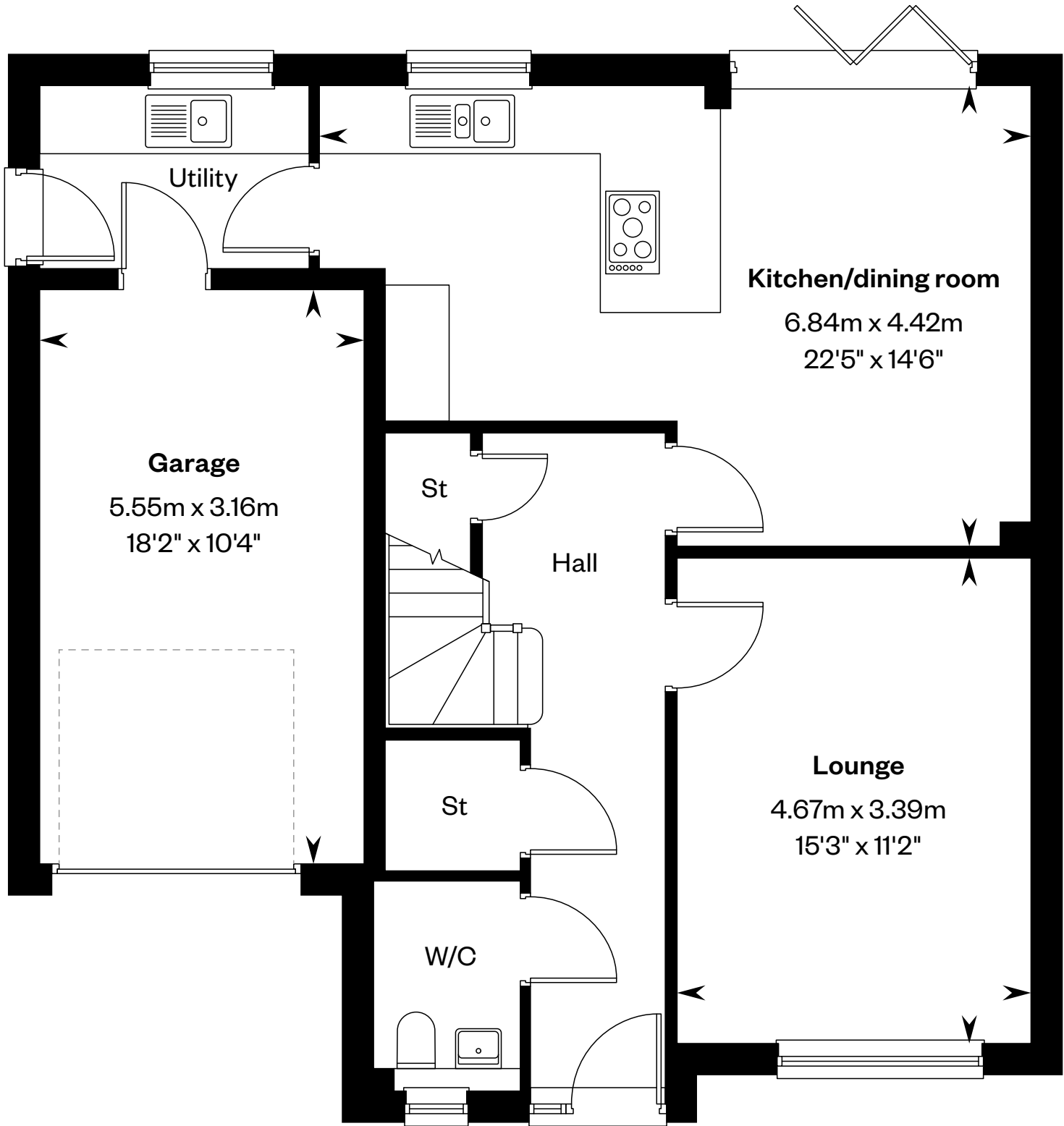
4 bedroom detached home

Plots 68, 85, 86, 108 & 117 – as shown

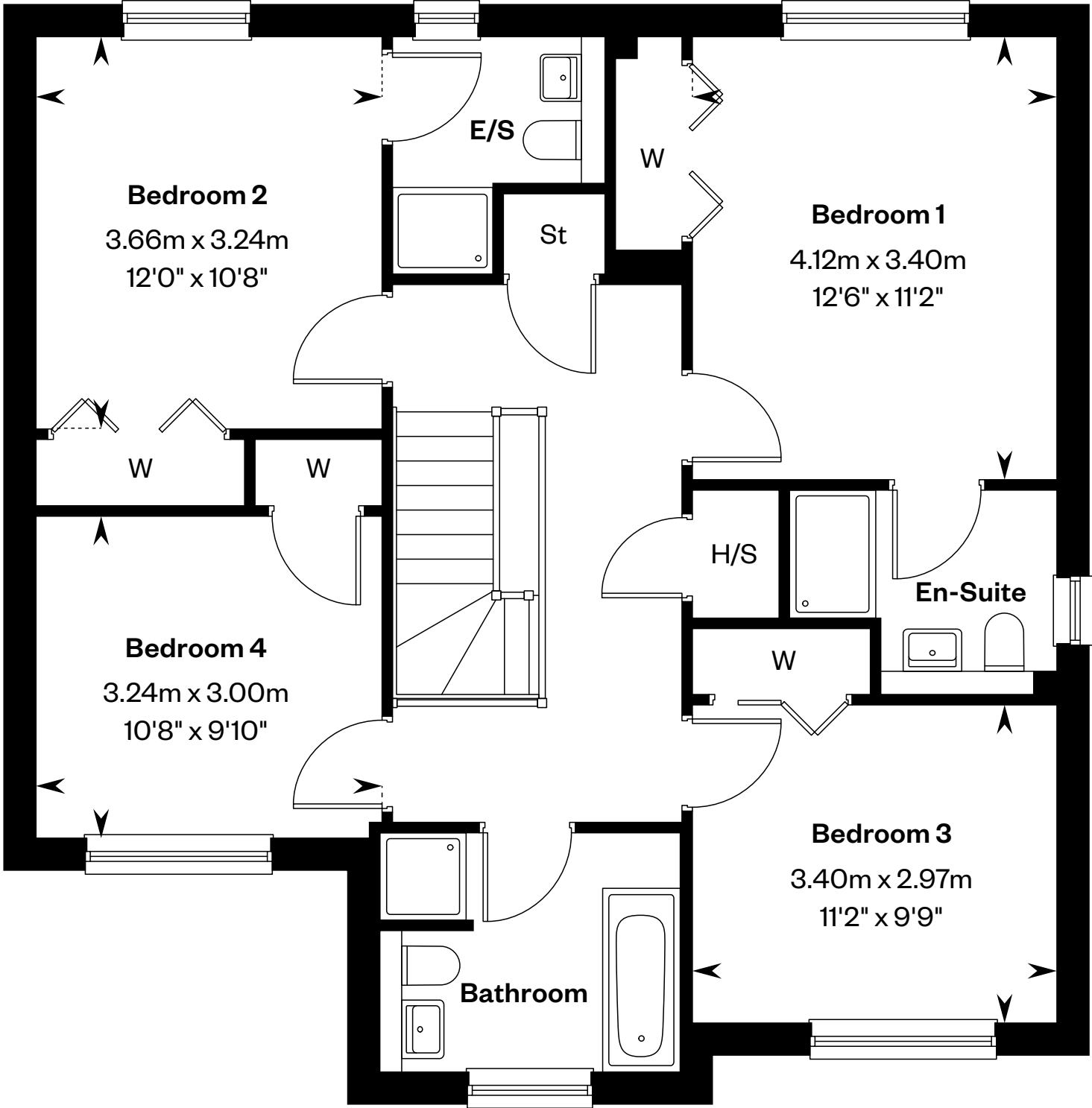
Plots 65, 69 & 137 – handed



This is a Predicted Energy Assessment for properties that are incomplete. Once the property is completed, this rating will be updated and an official Energy Performance certificate will be created for the property.



Ground floor



First floor

E/S: En-Suite. H/S: Heating source cupboard. St: Store cupboard. W: Wardrobe.

IMPORTANT NOTICE TO CUSTOMERS: The Consumer Protection from Unfair Trading Regulations 2008. Cala Homes (West) Limited operates a policy of continual product development and the specifications outlined in this brochure are indicative only. The computer generated images and photographs do not necessarily represent the actual finishings/elevation or treatments, landscaping, furnishings and fittings at this development. Information contained is accurate at date of publication on 19.06.25. See the main brochure for the full Consumer Protection statement.



The Cleland

4 bedroom detached home



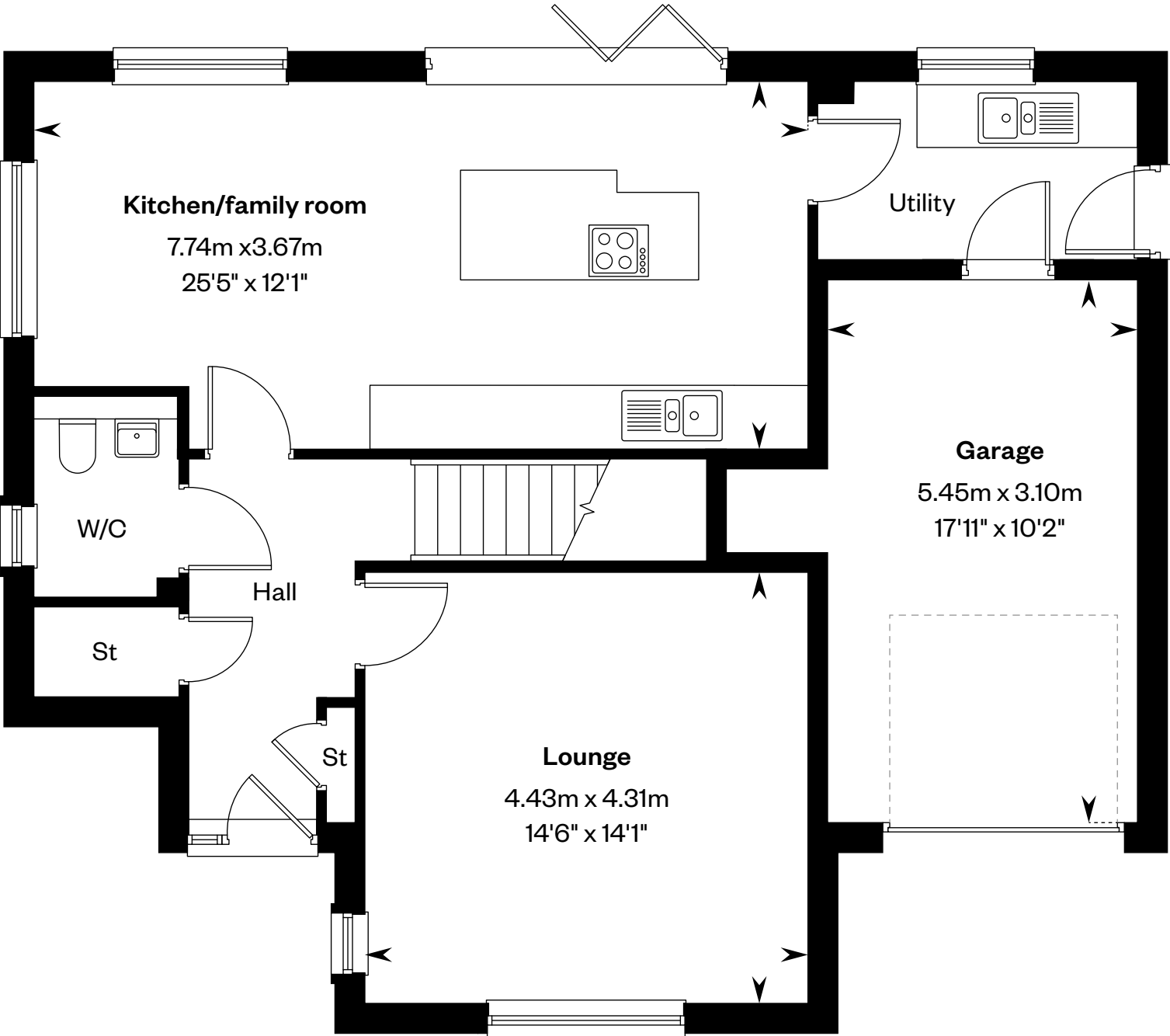
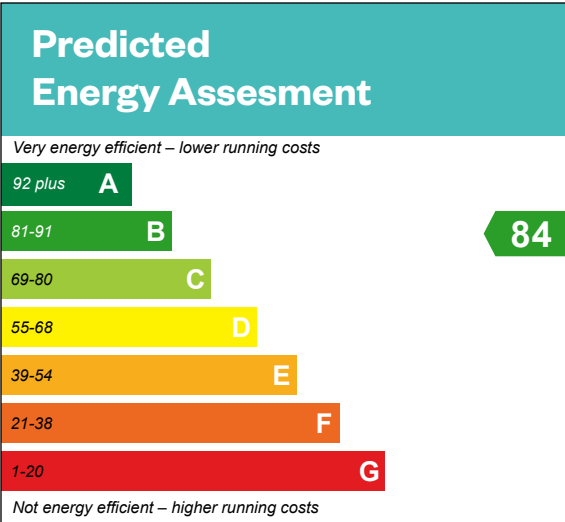
Computer generated image - The Cleland

The Cleland

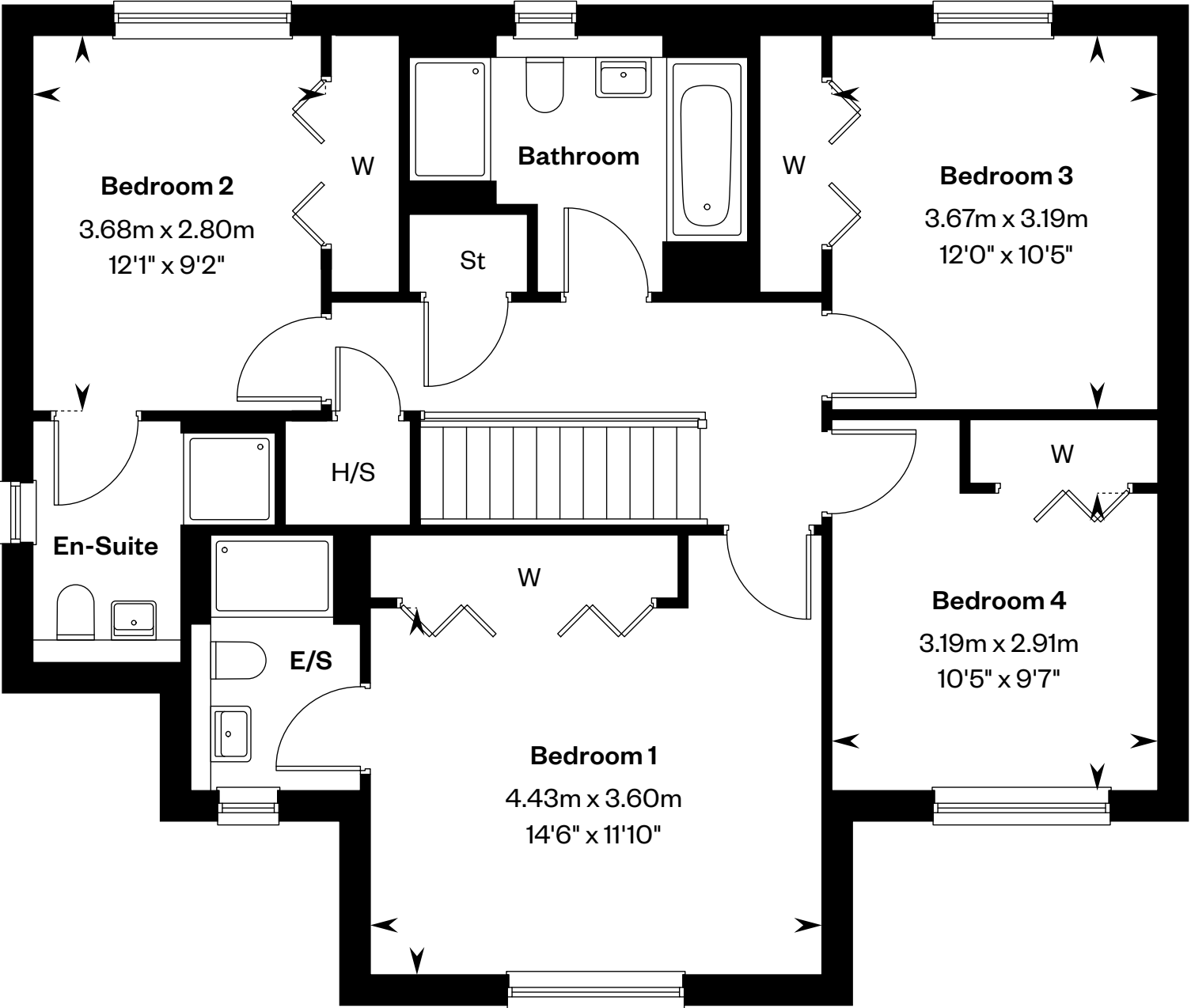
4 bedroom detached home

Plots 87, 144 & 172 – as shown

Plots 60 & 63– handed



Ground floor



First floor

E/S: En-Suite. H/S: Heating source cupboard. St: Store cupboard. W: Wardrobe.

IMPORTANT NOTICE TO CUSTOMERS: The Consumer Protection from Unfair Trading Regulations 2008. Cala Homes (West) Limited operates a policy of continual product development and the specifications outlined in this brochure are indicative only. The computer generated images and photographs do not necessarily represent the actual finishings/elevation or treatments, landscaping, furnishings and fittings at this development. Information contained is accurate at date of publication on 19.06.25. See the main brochure for the full Consumer Protection statement.



The Colonsay

4 bedroom end terraced home



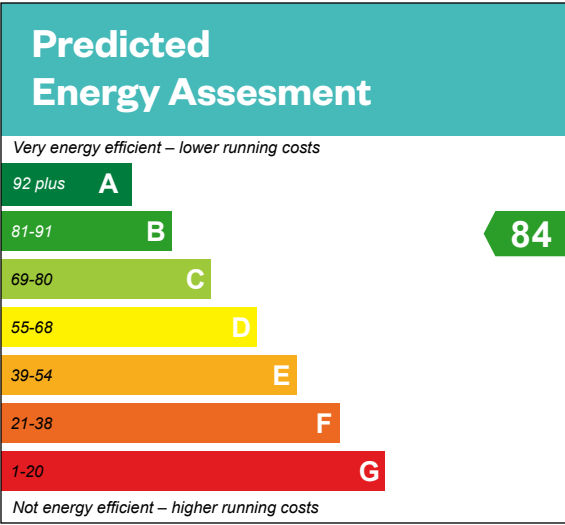
Computer generated image - The Colonsay

The Colonsay

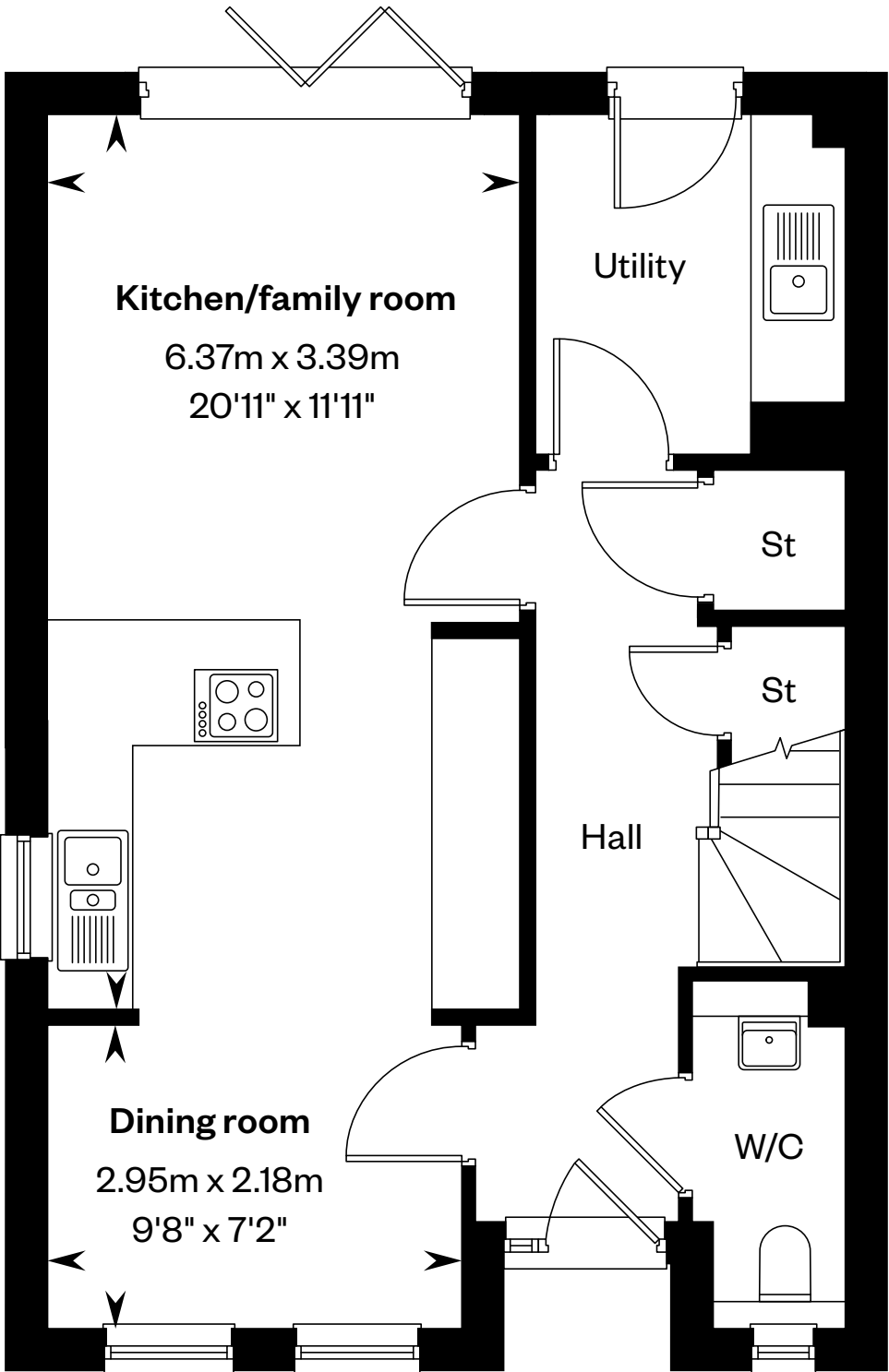
4 bedroom end terraced home

Plots 91, 95, 102, 162 & 166 – as shown

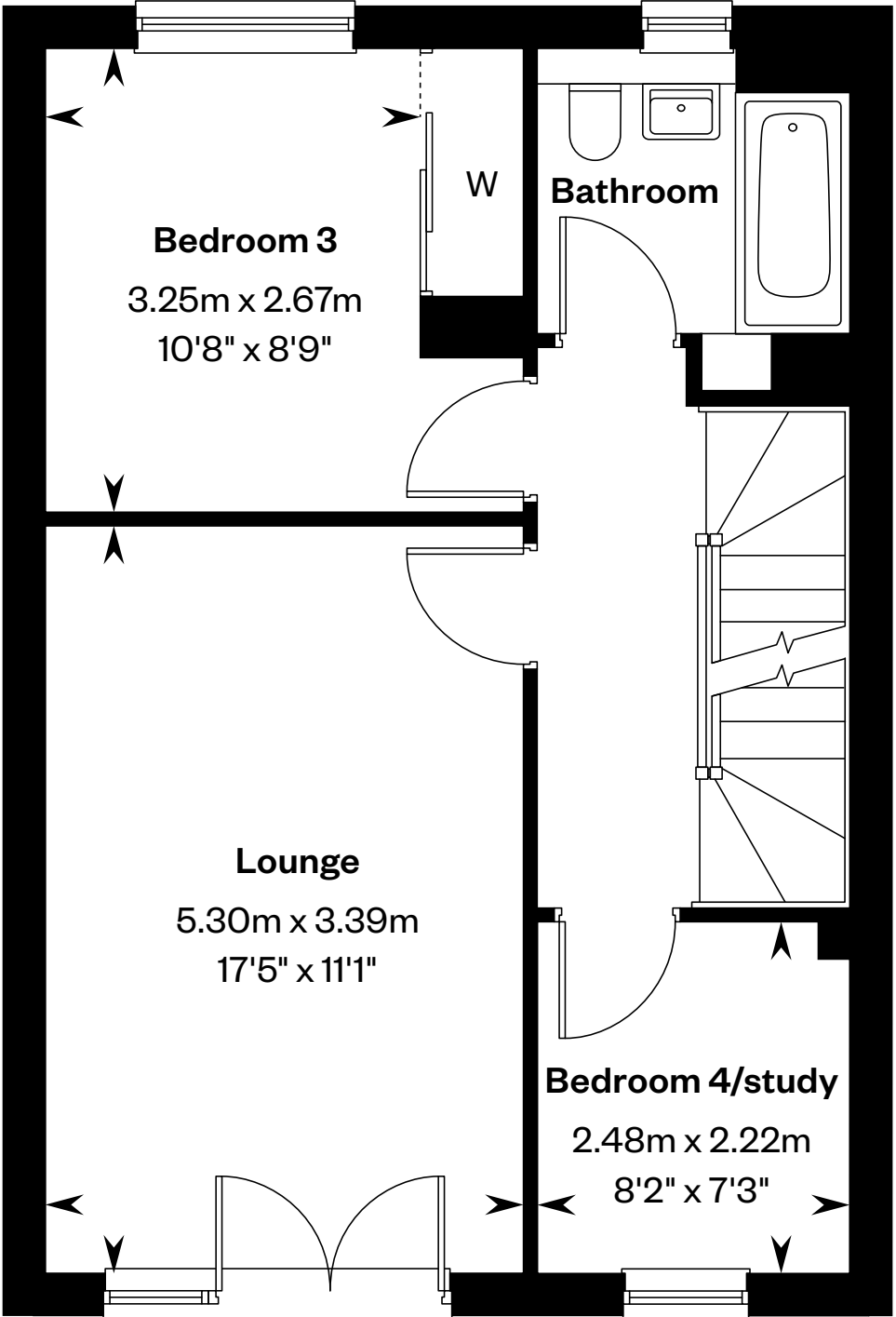
Plots 94, 98, 99, 158 & 163 – handed



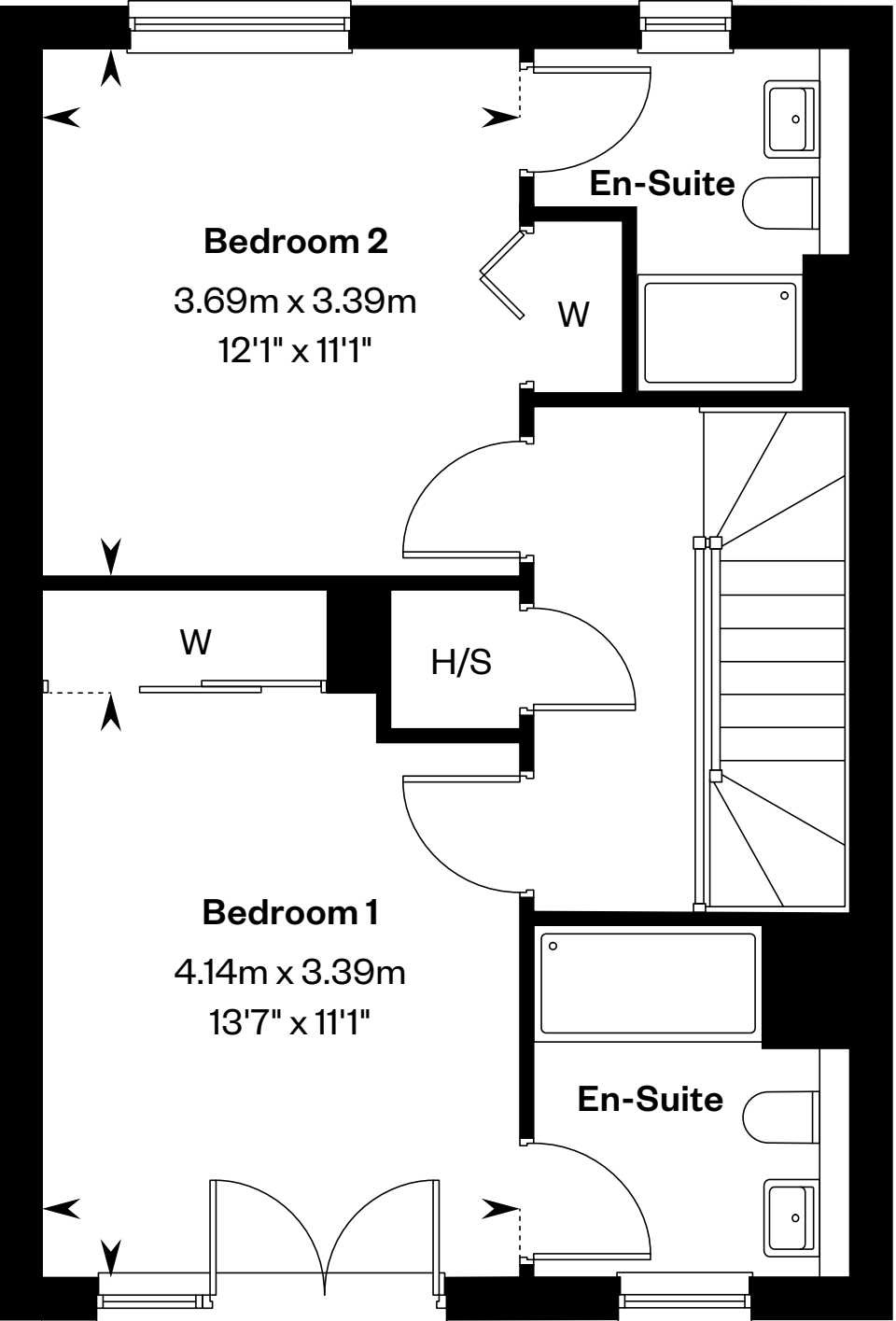
This is a Predicted Energy Assessment for properties that are incomplete. Once the property is completed, this rating will be updated and an official Energy Performance certificate will be created for the property.



Ground floor



First floor



Second floor

*Window configurations may vary. Please ask your Sales Consultant for further details.

H/S: Heating source cupboard. St: Store cupboard. W: Wardrobe.

IMPORTANT NOTICE TO CUSTOMERS: The Consumer Protection from Unfair Trading Regulations 2008. Cala Homes (West) Limited operates a policy of continual product development and the specifications outlined in this brochure are indicative only. The computer generated images and photographs do not necessarily represent the actual finishings/elevation or treatments, landscaping, furnishings and fittings at this development. Information contained is accurate at date of publication on 19.06.25. See the main brochure for the full Consumer Protection statement.



The Crichton

5 bedroom detached home

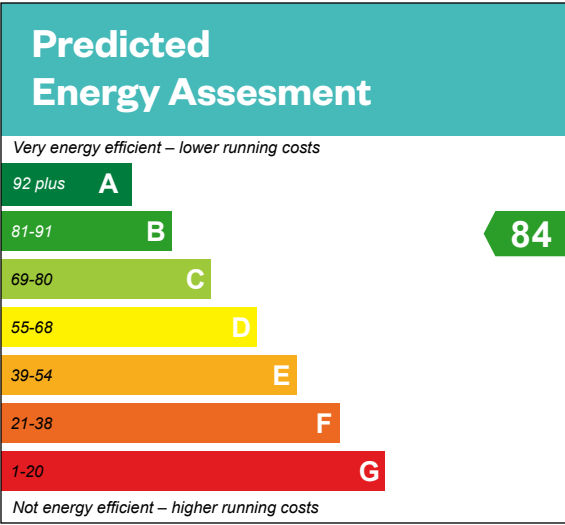


The Crichton

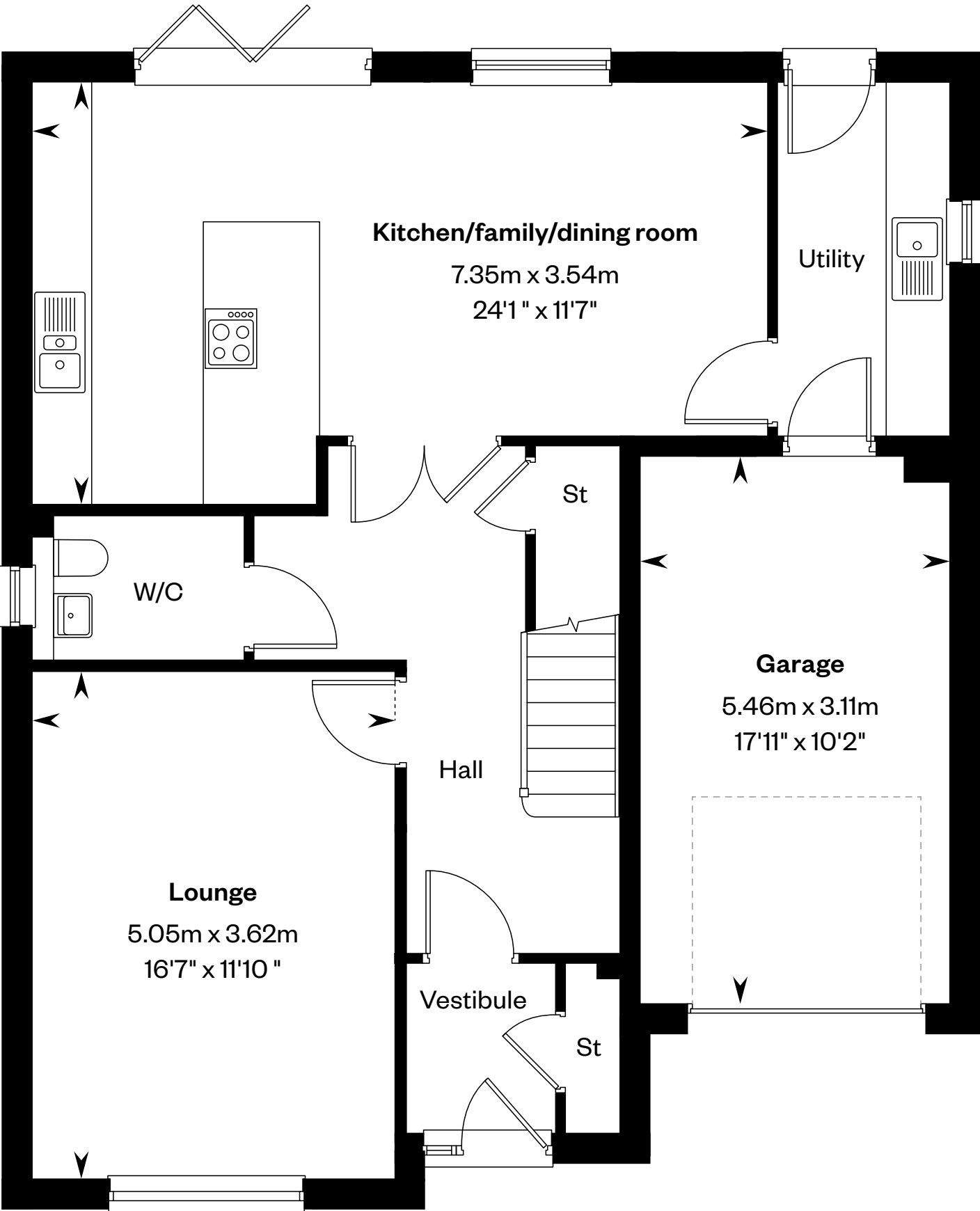
5 bedroom detached home

Plots 75, 89, 119, 121, 145 & 171 – as shown

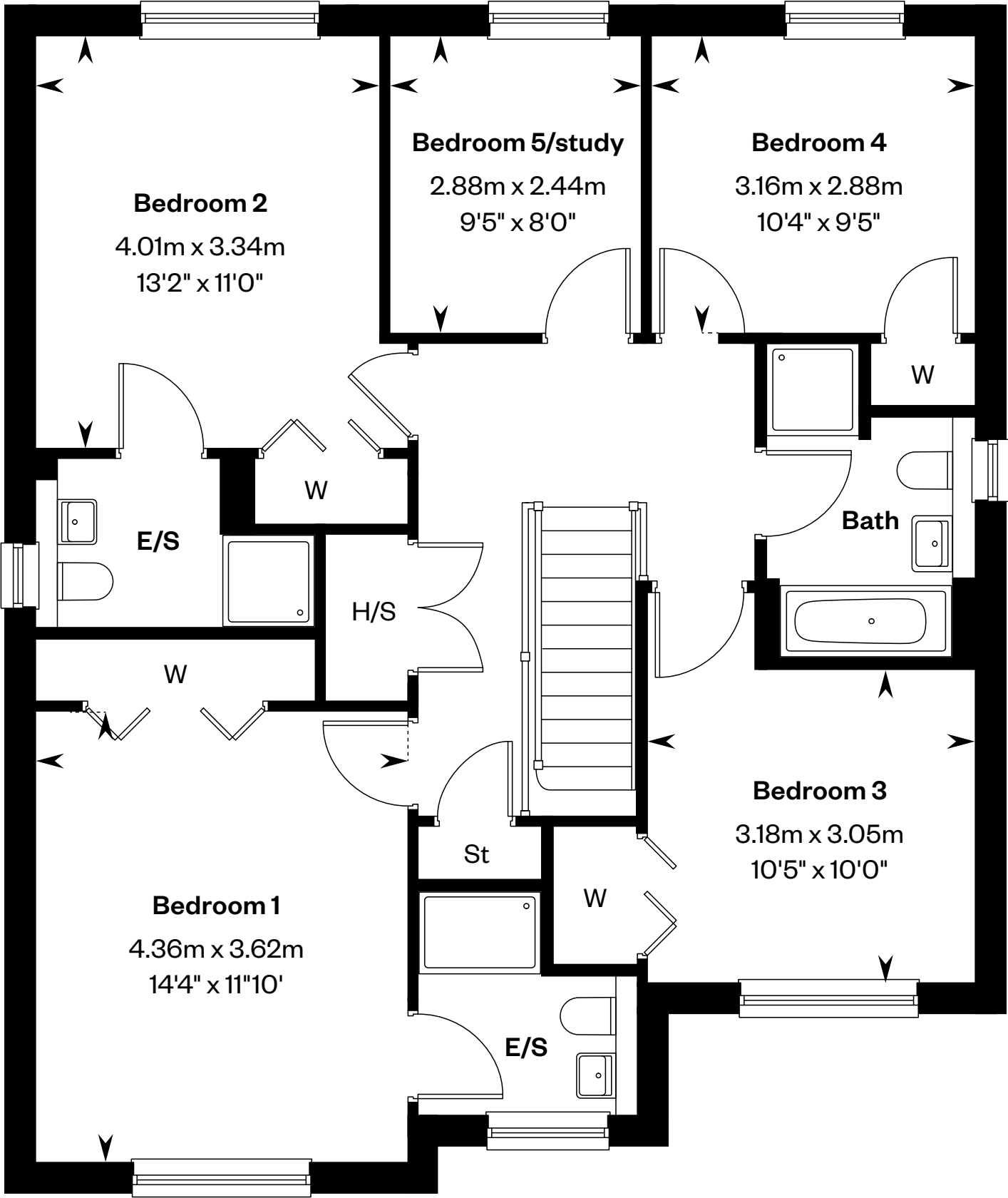
Plots 70, 104, 105, 138, 140, 143, 168 & 169 – handed



This is a Predicted Energy Assessment for properties that are incomplete. Once the property is completed, this rating will be updated and an official Energy Performance certificate will be created for the property.



Ground floor



First floor

E/S: En-Suite. H/S: Heating source cupboard. St: Store cupboard. W: Wardrobe.

IMPORTANT NOTICE TO CUSTOMERS: The Consumer Protection from Unfair Trading Regulations 2008. Cala Homes (West) Limited operates a policy of continual product development and the specifications outlined in this brochure are indicative only. The computer generated images and photographs do not necessarily represent the actual finishings/elevation or treatments, landscaping, furnishings and fittings at this development. Information contained is accurate at date of publication on 19.06.25. See the main brochure for the full Consumer Protection statement.



The Darroch

5 bedroom detached home

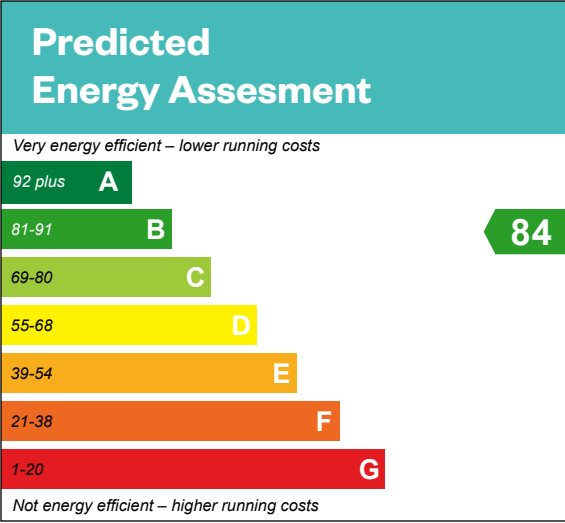


The Darroch

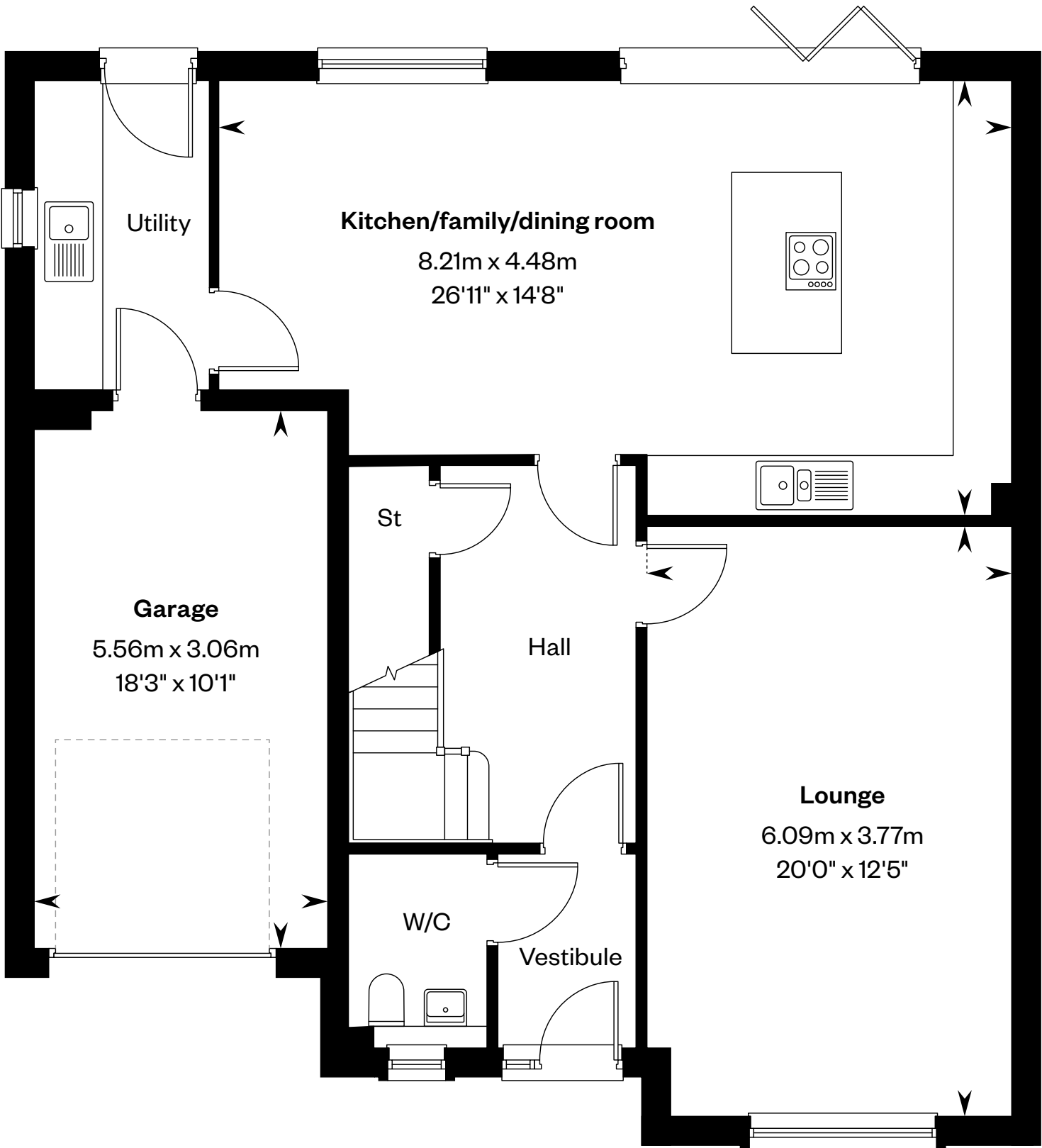
5 bedroom detached home

Plots 88, 103, 141, 142 & 170 - as shown

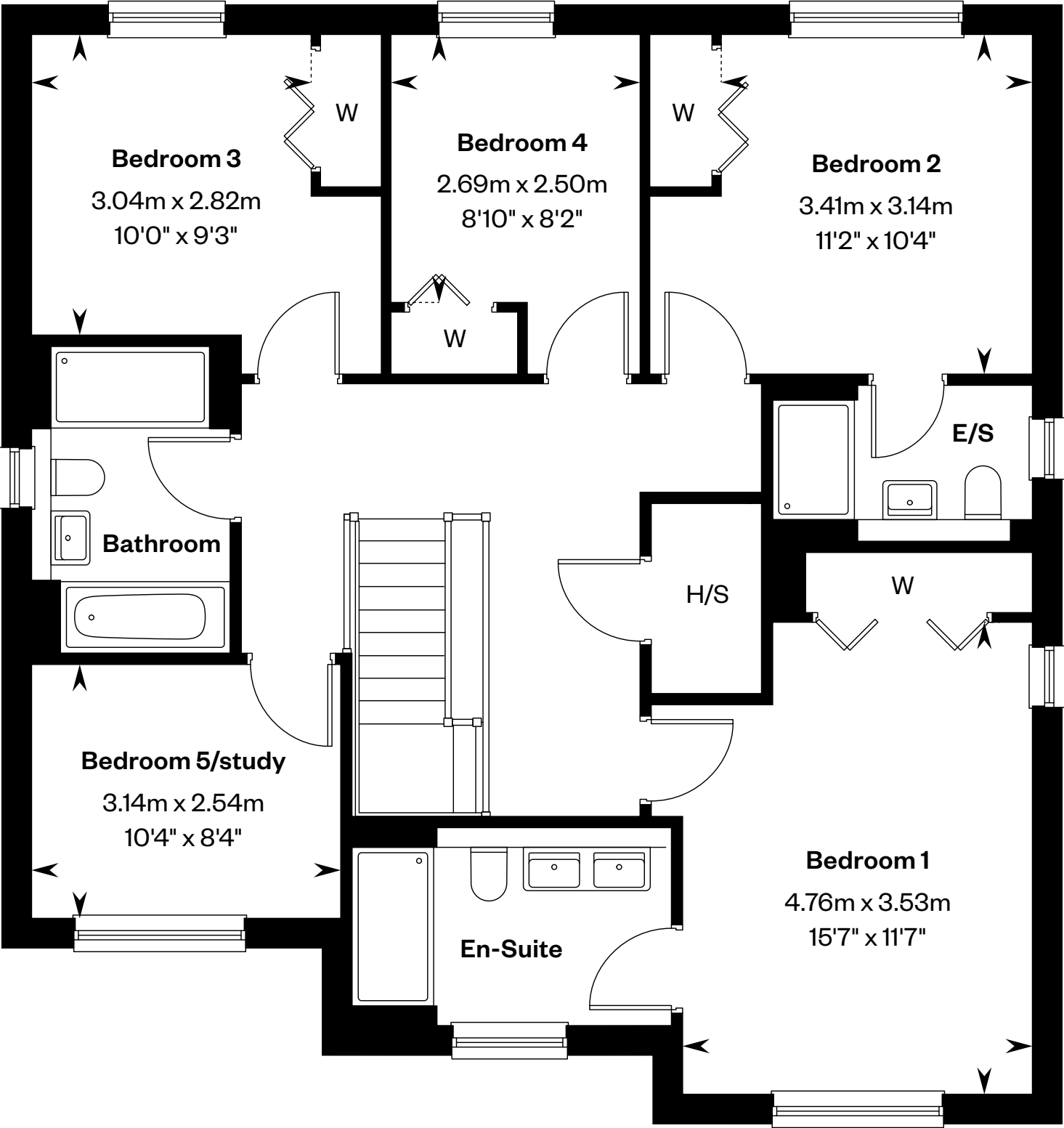
Plots 61, 90, 115, 118, 120, 135, 136, 139, 146, 167 & 187 – handed



This is a Predicted Energy Assessment for properties that are incomplete. Once the property is completed, this rating will be updated and an official Energy Performance certificate will be created for the property.



Ground floor



First floor

E/S: En-Suite. H/S: Heating source cupboard. St: Store cupboard. W: Wardrobe.

IMPORTANT NOTICE TO CUSTOMERS: The Consumer Protection from Unfair Trading Regulations 2008. Cala Homes (West) Limited operates a policy of continual product development and the specifications outlined in this brochure are indicative only. The computer generated images and photographs do not necessarily represent the actual finishings/elevation or treatments, landscaping, furnishings and fittings at this development. Information contained is accurate at date of publication on1 9.06.25. See the main brochure for the full Consumer Protection statement.



The Dewar FE

5 bedroom detached home



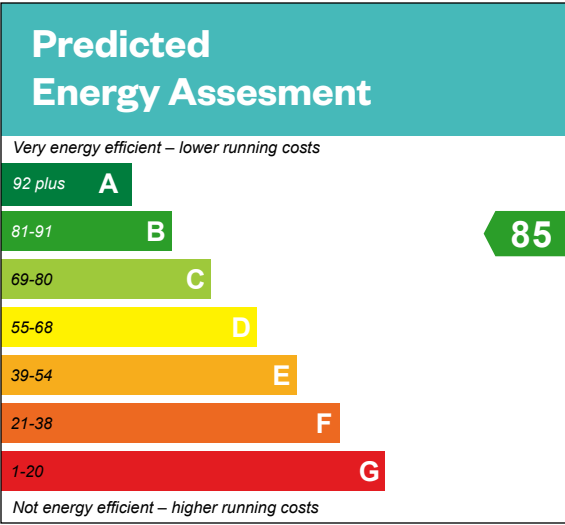
Computer generated image - The Dewar FE

The Dewar FE

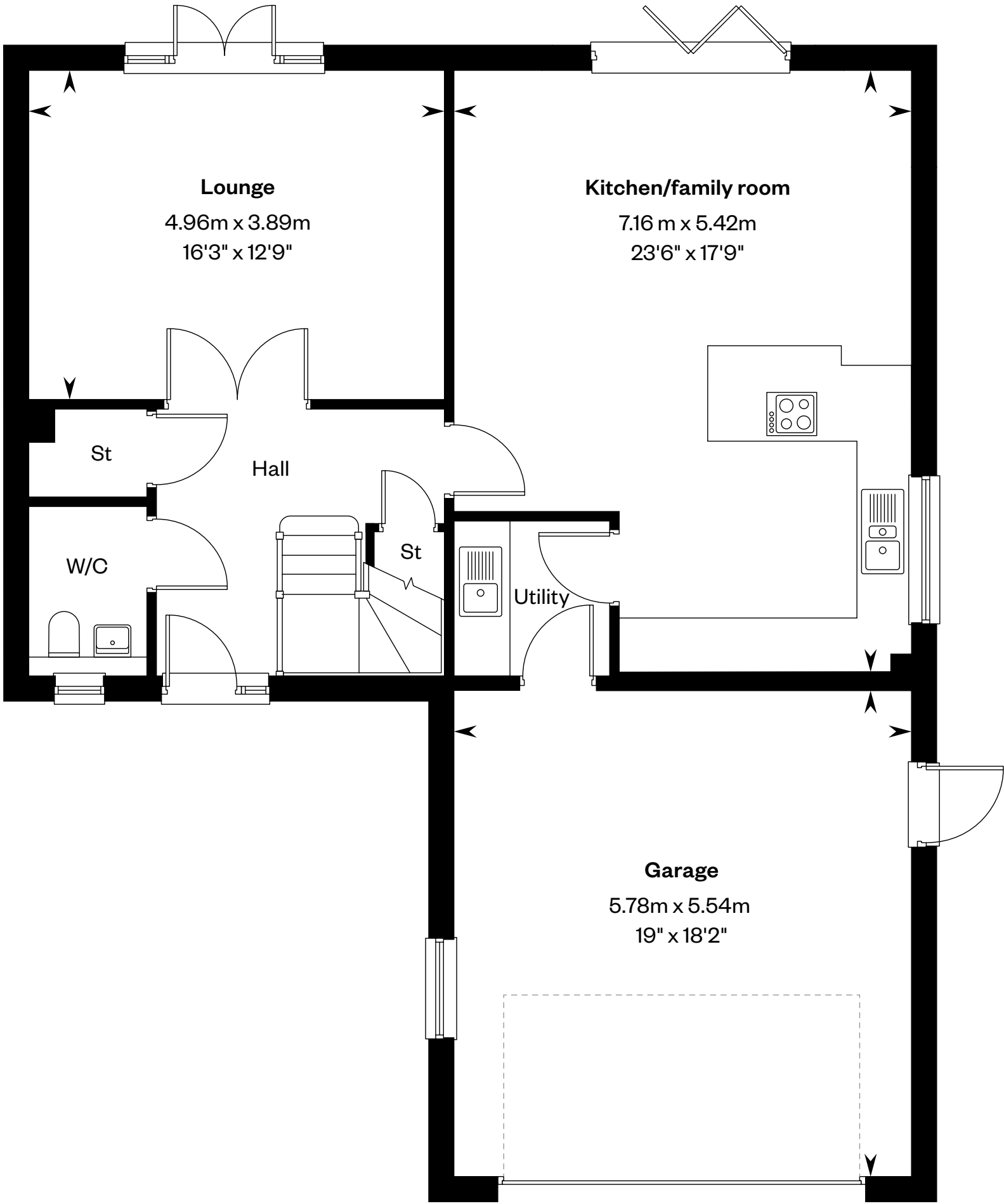
5 bedroom detached home

Plot 116 – as shown

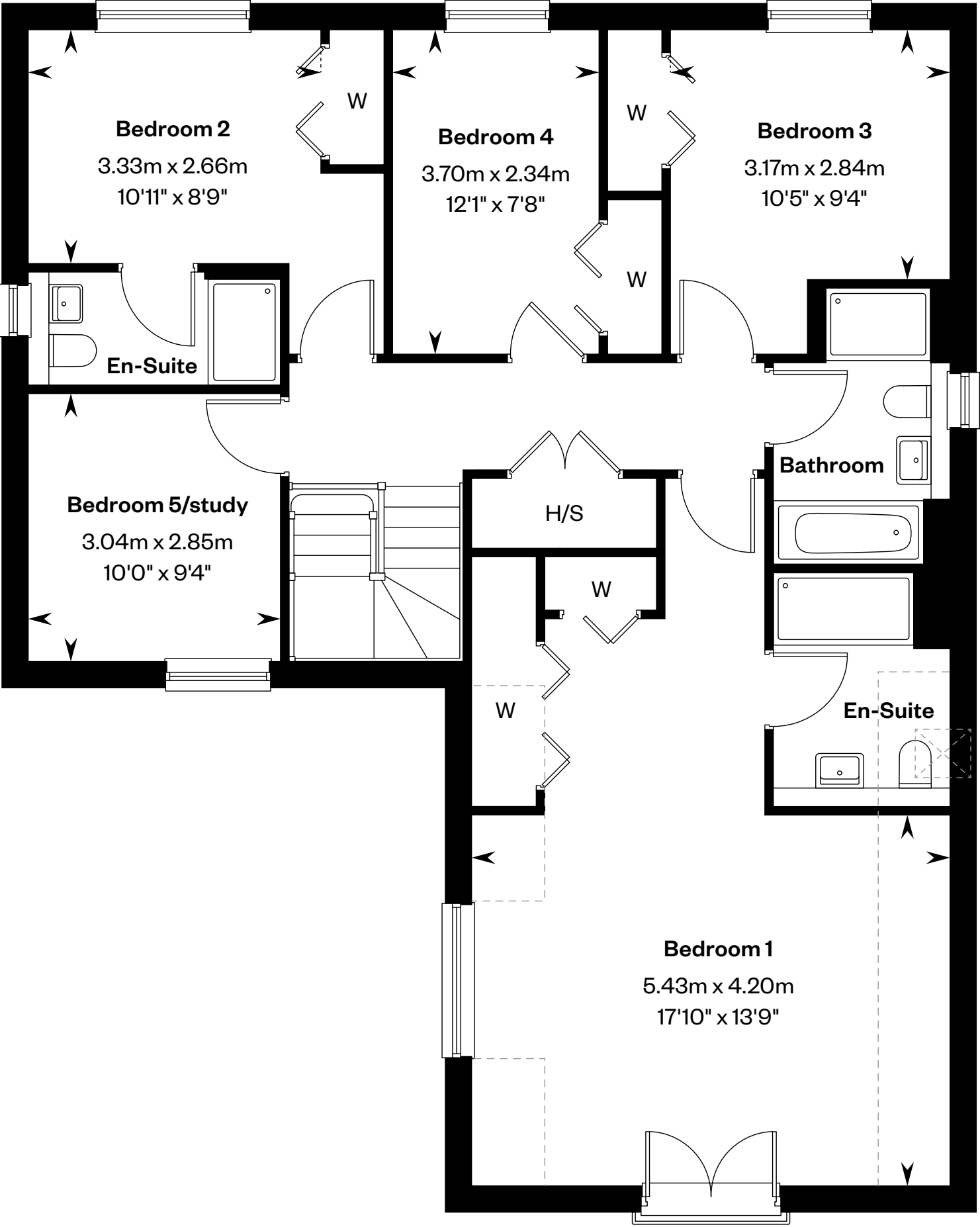
Plot 186 – handed



This is a Predicted Energy Assessment for properties that are incomplete. Once the property is completed, this rating will be updated and an official Energy Performance certificate will be created for the property.



Ground floor



First floor

H/S: Heating source cupboard. St: Store cupboard. W: Wardrobe. : Roof light window. ----: Dotted lines denote reduced head height.

IMPORTANT NOTICE TO CUSTOMERS: The Consumer Protection from Unfair Trading Regulations 2008. Cala Homes (West) Limited operates a policy of continual product development and the specifications outlined in this brochure are indicative only. The computer generated images and photographs do not necessarily represent the actual finishings/elevation or treatments, landscaping, furnishings and fittings at this development. Information contained is accurate at date of publication on 19.06.25. See the main brochure for the full Consumer Protection statement.



The Dewar IC

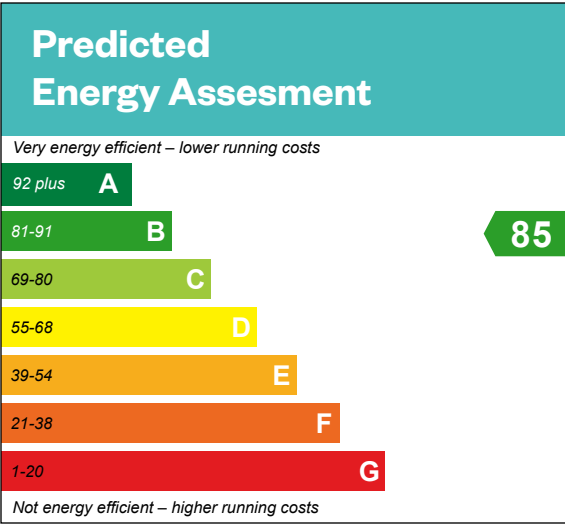
5 bedroom detached home



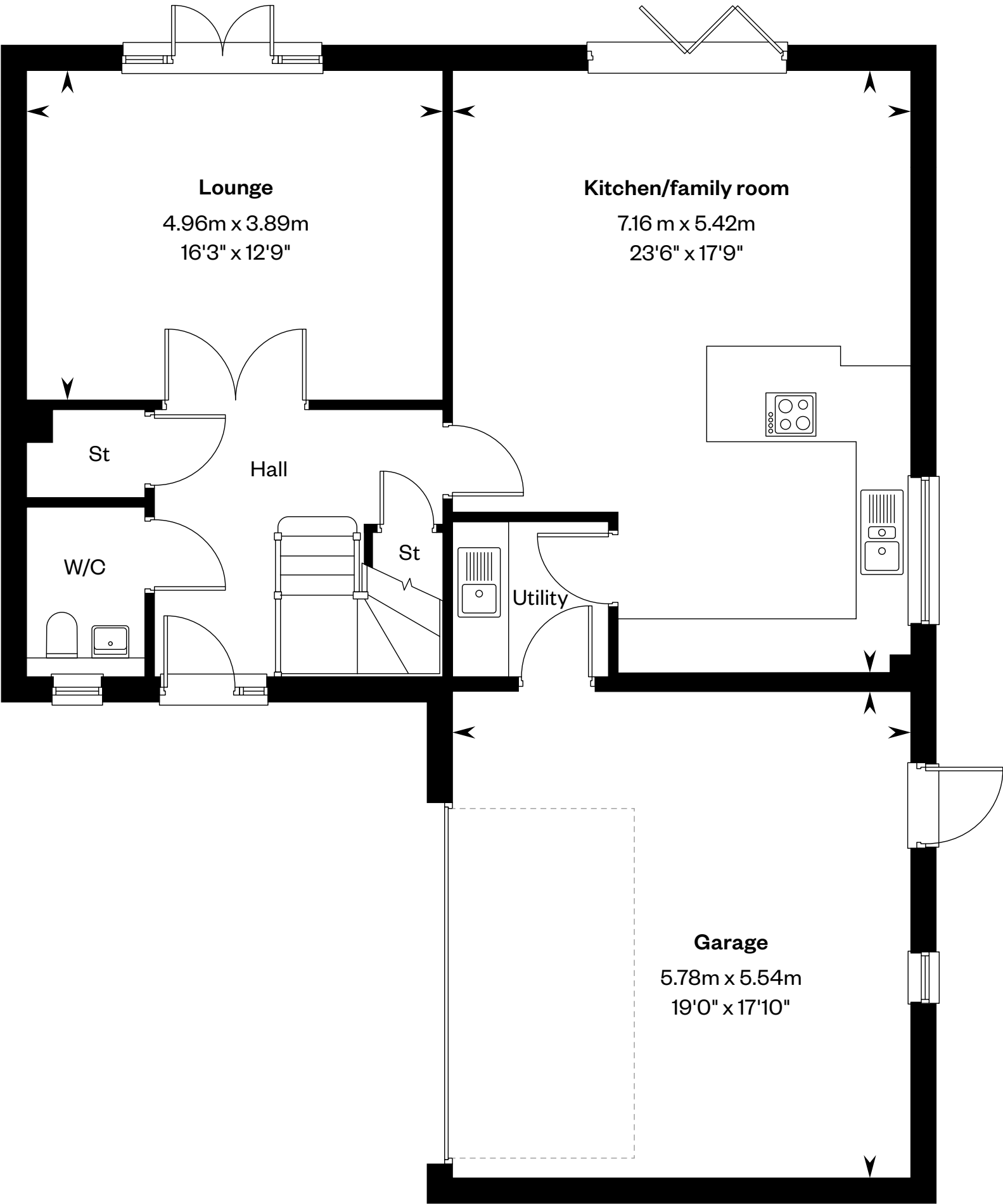
The Dewar IC

5 bedroom detached home

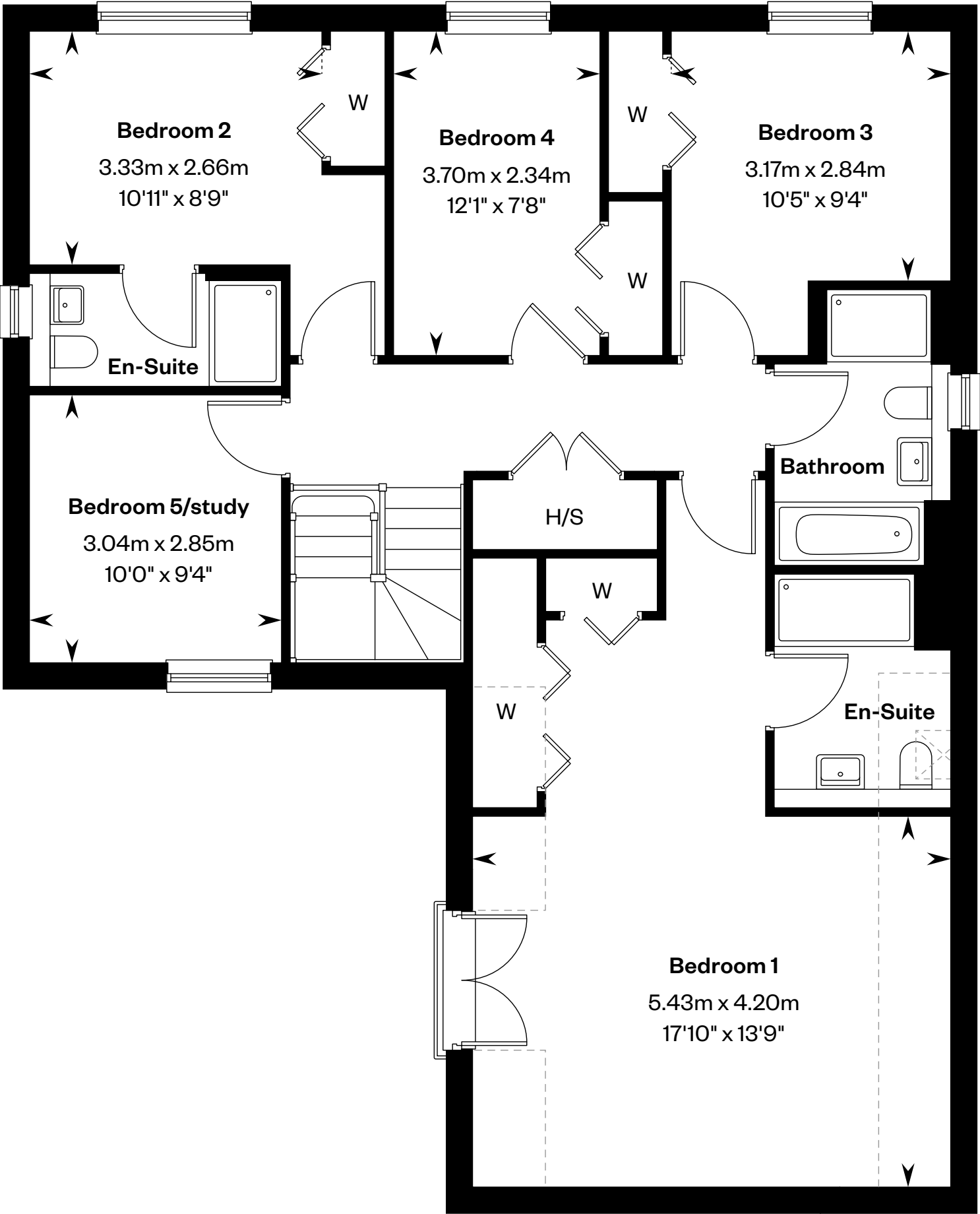
Plots 64 – as shown



This is a Predicted Energy Assessment for properties that are incomplete. Once the property is completed, this rating will be updated and an official Energy Performance certificate will be created for the property.



Ground floor



First floor

H/S: Heating source cupboard. St: Store cupboard. W: Wardrobe. : Roof light window. ----: Dotted lines denote reduced head height.

IMPORTANT NOTICE TO CUSTOMERS: The Consumer Protection from Unfair Trading Regulations 2008. Cala Homes (West) Limited operates a policy of continual product development and the specifications outlined in this brochure are indicative only. The computer generated images and photographs do not necessarily represent the actual finishings/elevation or treatments, landscaping, furnishings and fittings at this development. Information contained is accurate at date of publication on 19.06.25. See the main brochure for the full Consumer Protection statement.



The Kennedy

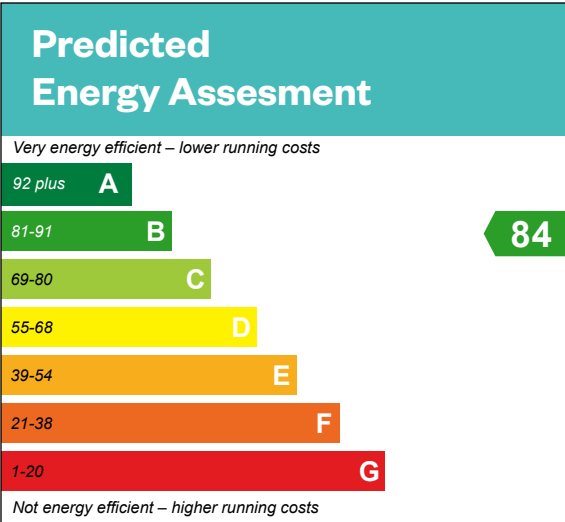
5 bedroom detached home



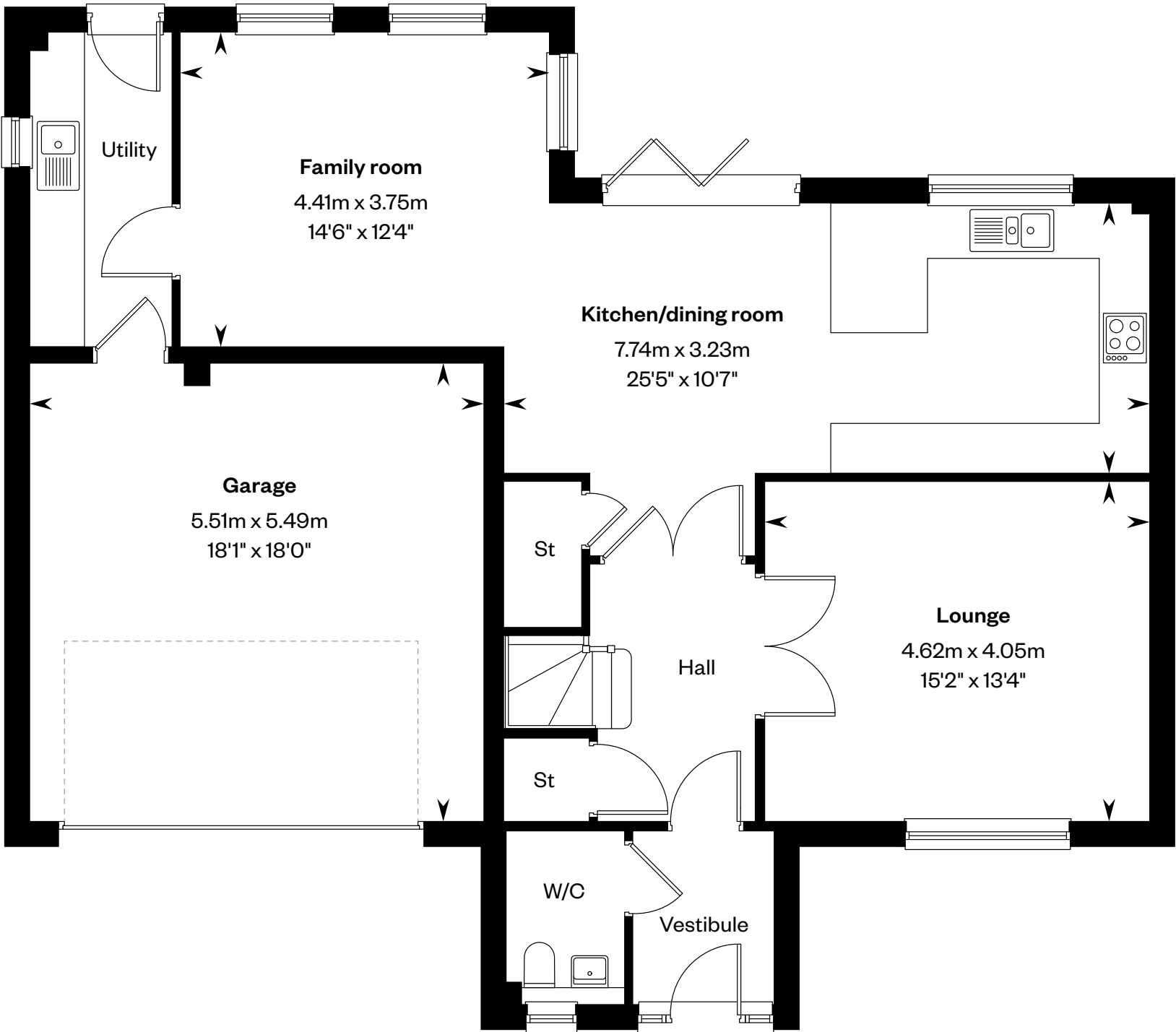
The Kennedy

5 bedroom detached home

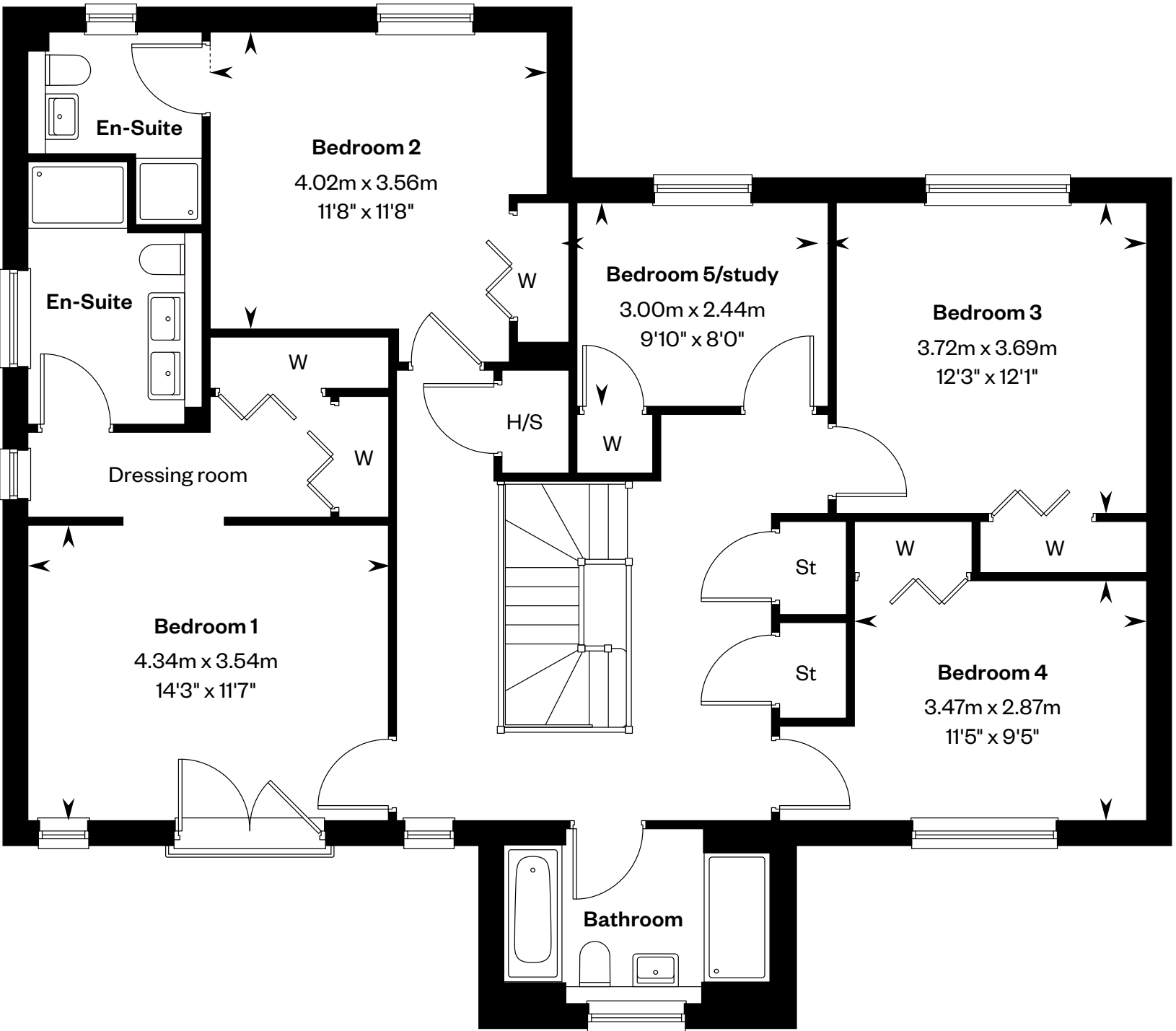
Plots 62 – handed



This is a Predicted Energy Assessment for properties that are incomplete. Once the property is completed, this rating will be updated and an official Energy Performance certificate will be created for the property.



Ground floor



First floor

H/S: Heating source cupboard. St: Store cupboard. W: Wardrobe..

IMPORTANT NOTICE TO CUSTOMERS: The Consumer Protection from Unfair Trading Regulations 2008. Cala Homes (West) Limited operates a policy of continual product development and the specifications outlined in this brochure are indicative only. The computer generated images and photographs do not necessarily represent the actual finishings/elevation or treatments, landscaping, furnishings and fittings at this development. Information contained is accurate at date of publication on 19.06.25. See the main brochure for the full Consumer Protection statement.