



# Sanderling Court

1 bedroom apartments

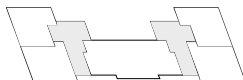


# Sanderling Court

## 1 bedroom apartment

Plot 332 – as shown

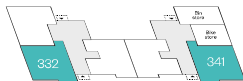
Plot 341 – handed



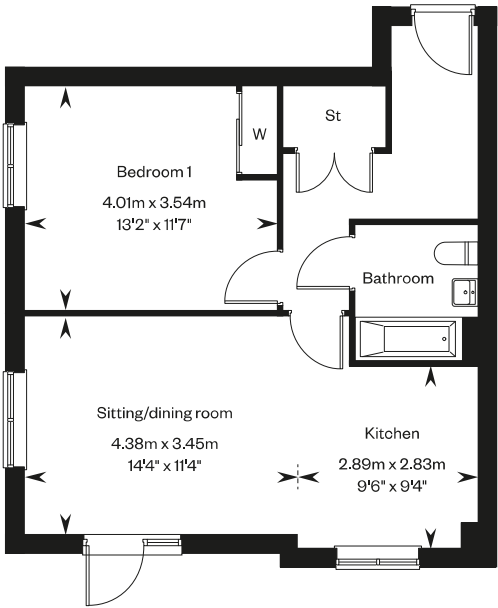
Second floor



First floor



Ground floor



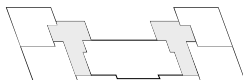
Please ask your Sales Consultant for further details. ST: Store cupboard W: Wardrobe.

IMPORTANT NOTICE TO CUSTOMERS: The Consumer Protection from Unfair Trading Regulations 2008, Cala Homes (South Home Counties) Limited operates a policy of continual product development and the specifications outlined in this brochure are indicative only. The computer generated images and photographs do not necessarily represent the actual finishings/ elevation or treatments, landscaping, furnishings and fittings at this development. Information contained is accurate at date of publication on 06.08.25. See the main brochure for the full Consumer Protection statement.

# Sanderling Court

## 1 bedroom apartment

Plot 333 – as shown



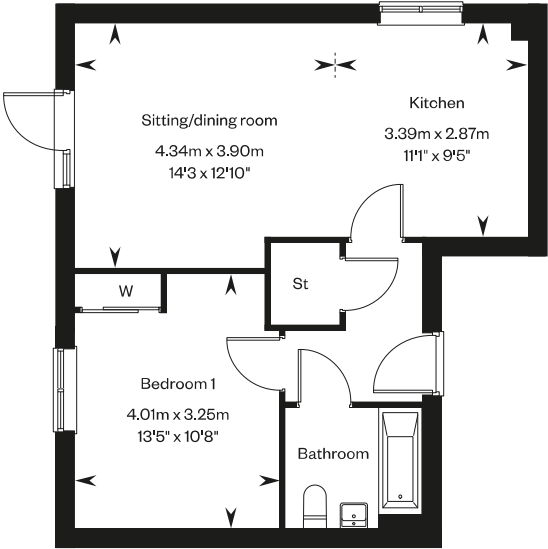
Second floor



First floor



Ground floor



Please ask your Sales Consultant for further details. ST: Store cupboard W: Wardrobe.

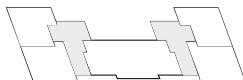
IMPORTANT NOTICE TO CUSTOMERS: The Consumer Protection from Unfair Trading Regulations 2008, Cala Homes (South Home Counties) Limited operates a policy of continual product development and the specifications outlined in this brochure are indicative only. The computer generated images and photographs do not necessarily represent the actual finishings/ elevation or treatments, landscaping, furnishings and fittings at this development. Information contained is accurate at date of publication on 06.08.25. See the main brochure for the full Consumer Protection statement.

# Sanderling Court

## 1 bedroom apartment

Plot 334 - as shown

Plot 340 - handed



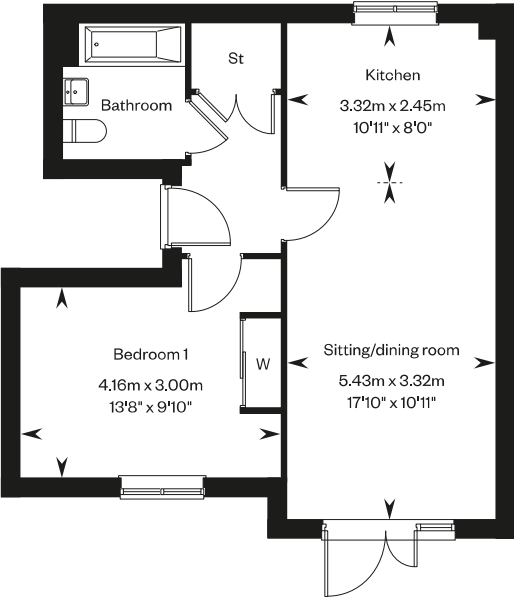
Second floor



First floor



Ground floor



Please ask your Sales Consultant for further details. ST: Store cupboard W: Wardrobe.

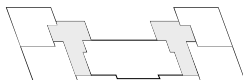
**IMPORTANT NOTICE TO CUSTOMERS:** The Consumer Protection from Unfair Trading Regulations 2008, Cala Homes (South Home Counties) Limited operates a policy of continual product development and the specifications outlined in this brochure are indicative only. The computer generated images and photographs do not necessarily represent the actual finishings/ elevation or treatments, landscaping, furnishings and fittings at this development. Information contained is accurate at date of publication on 06.08.25. See the main brochure for the full Consumer Protection statement.

# Sanderling Court

## 1 bedroom apartment

Plots 335 – as shown

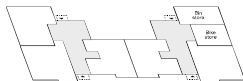
Plots 344 – handed



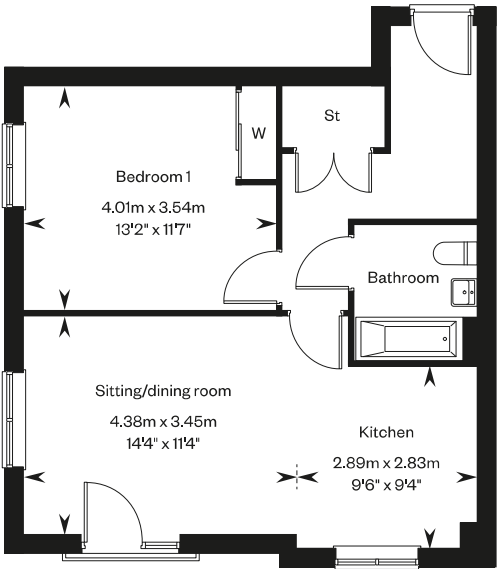
Second floor



First floor



Ground floor



Please ask your Sales Consultant for further details. ST: Store cupboard W: Wardrobe.

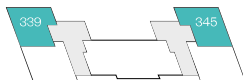
IMPORTANT NOTICE TO CUSTOMERS: The Consumer Protection from Unfair Trading Regulations 2008, Cala Homes (South Home Counties) Limited operates a policy of continual product development and the specifications outlined in this brochure are indicative only. The computer generated images and photographs do not necessarily represent the actual finishings/ elevation or treatments, landscaping, furnishings and fittings at this development. Information contained is accurate at date of publication on 06.08.25. See the main brochure for the full Consumer Protection statement.

# Sanderling Court

## 1 bedroom apartment

Plots 336 & 339 – as shown

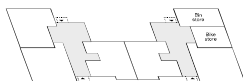
Plots 343 & 345 – handed



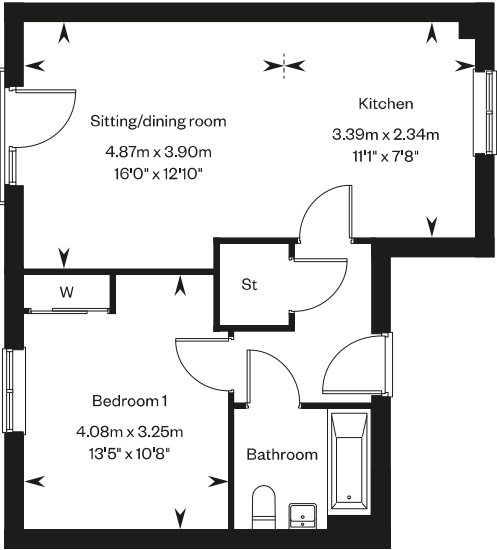
Second floor



First floor



Ground floor



Please ask your Sales Consultant for further details. ST: Store cupboard W: Wardrobe.

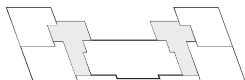
IMPORTANT NOTICE TO CUSTOMERS: The Consumer Protection from Unfair Trading Regulations 2008, Cala Homes (South Home Counties) Limited operates a policy of continual product development and the specifications outlined in this brochure are indicative only. The computer generated images and photographs do not necessarily represent the actual finishings/ elevation or treatments, landscaping, furnishings and fittings at this development. Information contained is accurate at date of publication on 06.08.25. See the main brochure for the full Consumer Protection statement.

# Sanderling Court

## 1 bedroom apartment

Plot 337 – as shown

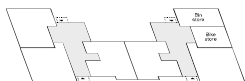
Plot 342 – handed



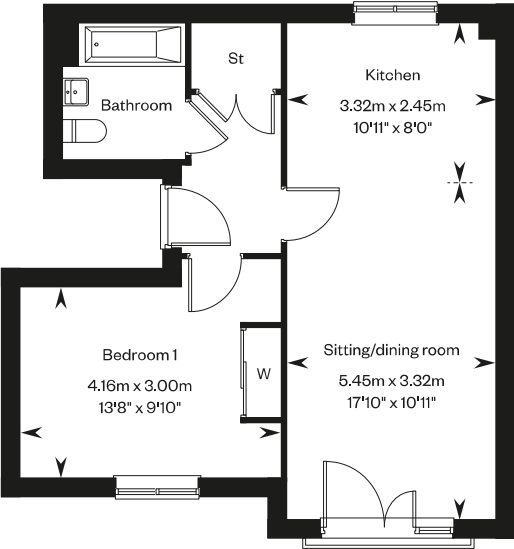
Second floor



First floor



Ground floor



Please ask your Sales Consultant for further details. ST: Store cupboard W: Wardrobe.

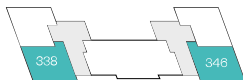
**IMPORTANT NOTICE TO CUSTOMERS:** The Consumer Protection from Unfair Trading Regulations 2008, Cala Homes (South Home Counties) Limited operates a policy of continual product development and the specifications outlined in this brochure are indicative only. The computer generated images and photographs do not necessarily represent the actual finishings/ elevation or treatments, landscaping, furnishings and fittings at this development. Information contained is accurate at date of publication on 06.08.25. See the main brochure for the full Consumer Protection statement.

# Sanderling Court

## 1 bedroom apartment

Plot 338 – as shown

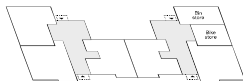
Plot 346 – handed



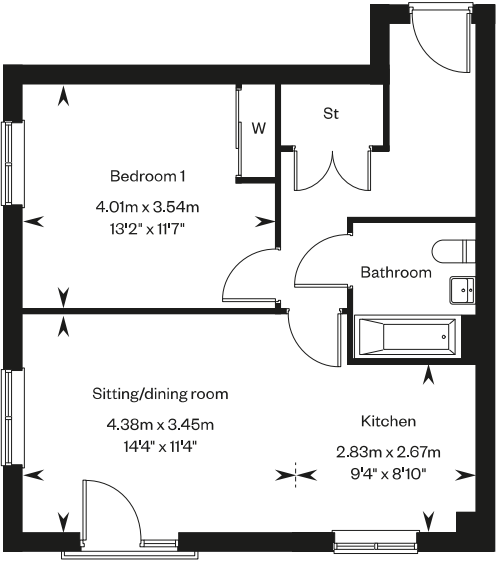
Second floor



First floor



Ground floor



Please ask your Sales Consultant for further details. ST: Store cupboard W: Wardrobe.

IMPORTANT NOTICE TO CUSTOMERS: The Consumer Protection from Unfair Trading Regulations 2008, Cala Homes (South Home Counties) Limited operates a policy of continual product development and the specifications outlined in this brochure are indicative only. The computer generated images and photographs do not necessarily represent the actual finishings/ elevation or treatments, landscaping, furnishings and fittings at this development. Information contained is accurate at date of publication on 06.08.25. See the main brochure for the full Consumer Protection statement.