

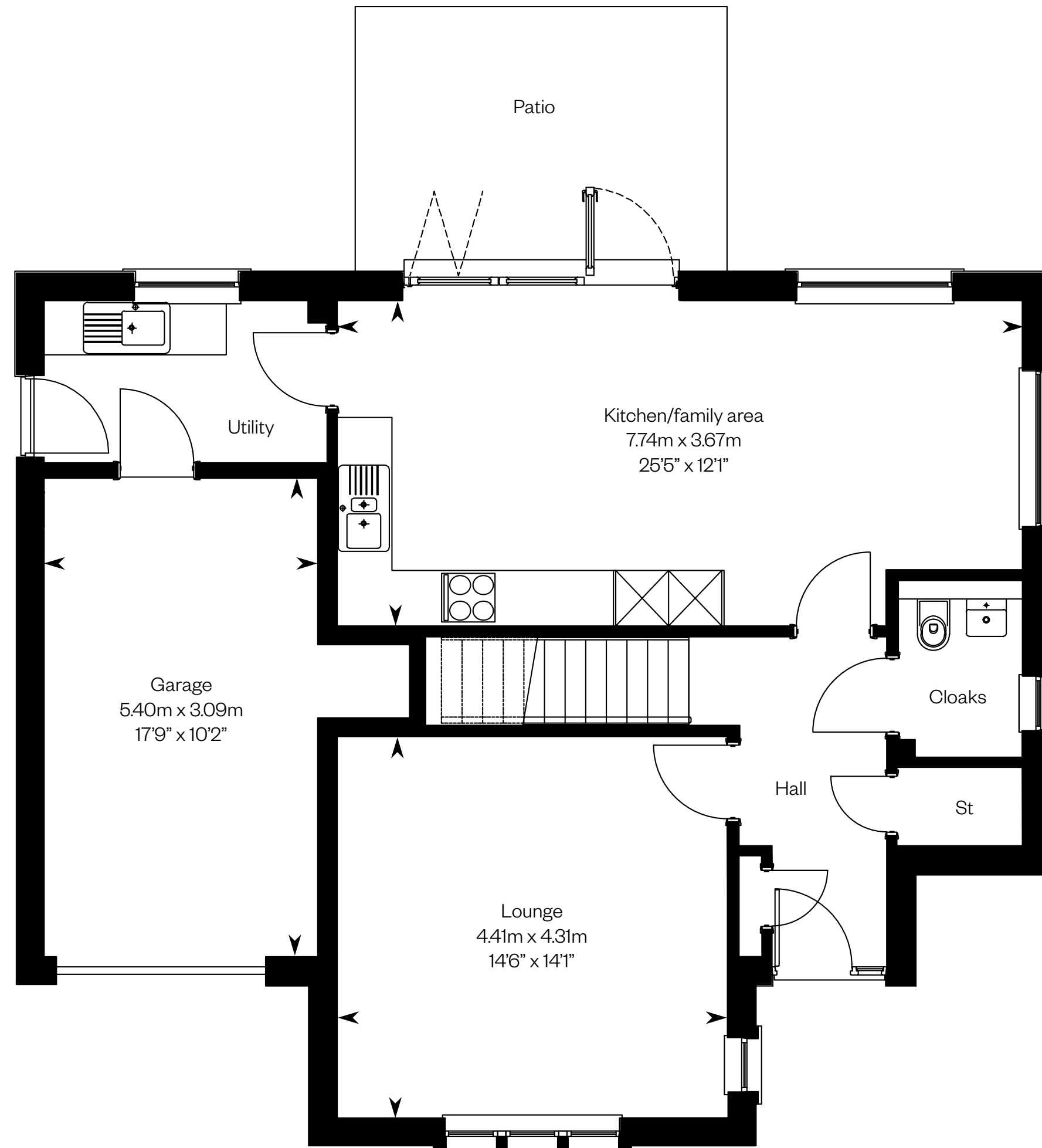
# The Cleland

4 bedroom detached home

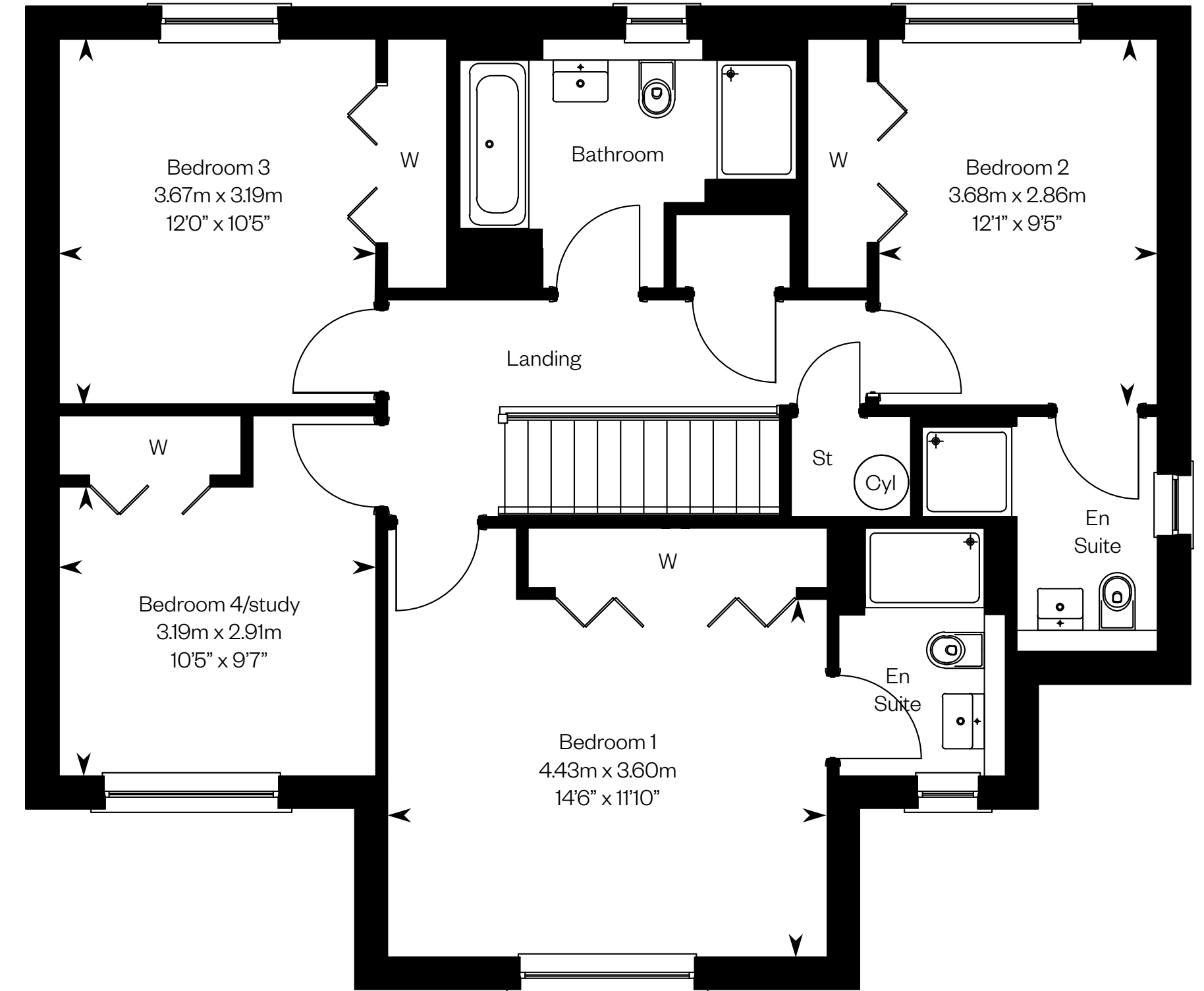


# The Cleland

Plots 18, 44 – as shown



Ground floor



First floor

Please ask your Sales Consultant for further details. ST: Store cupboard. W: Wardrobe.

IMPORTANT NOTICE TO CUSTOMERS: The Consumer Protection from Unfair Trading Regulations 2008. Cala Homes (East) Limited operates a policy of continual product development and the specifications outlined in this brochure are indicative only. The computer generated images and photographs do not necessarily represent the actual finishings/elevation or treatments, landscaping, furnishings and fittings at this development. Information contained is accurate at date of publication on 20.01.23. See the main brochure for the full Consumer Protection statement.

# The Darroch

5 bedroom detached home

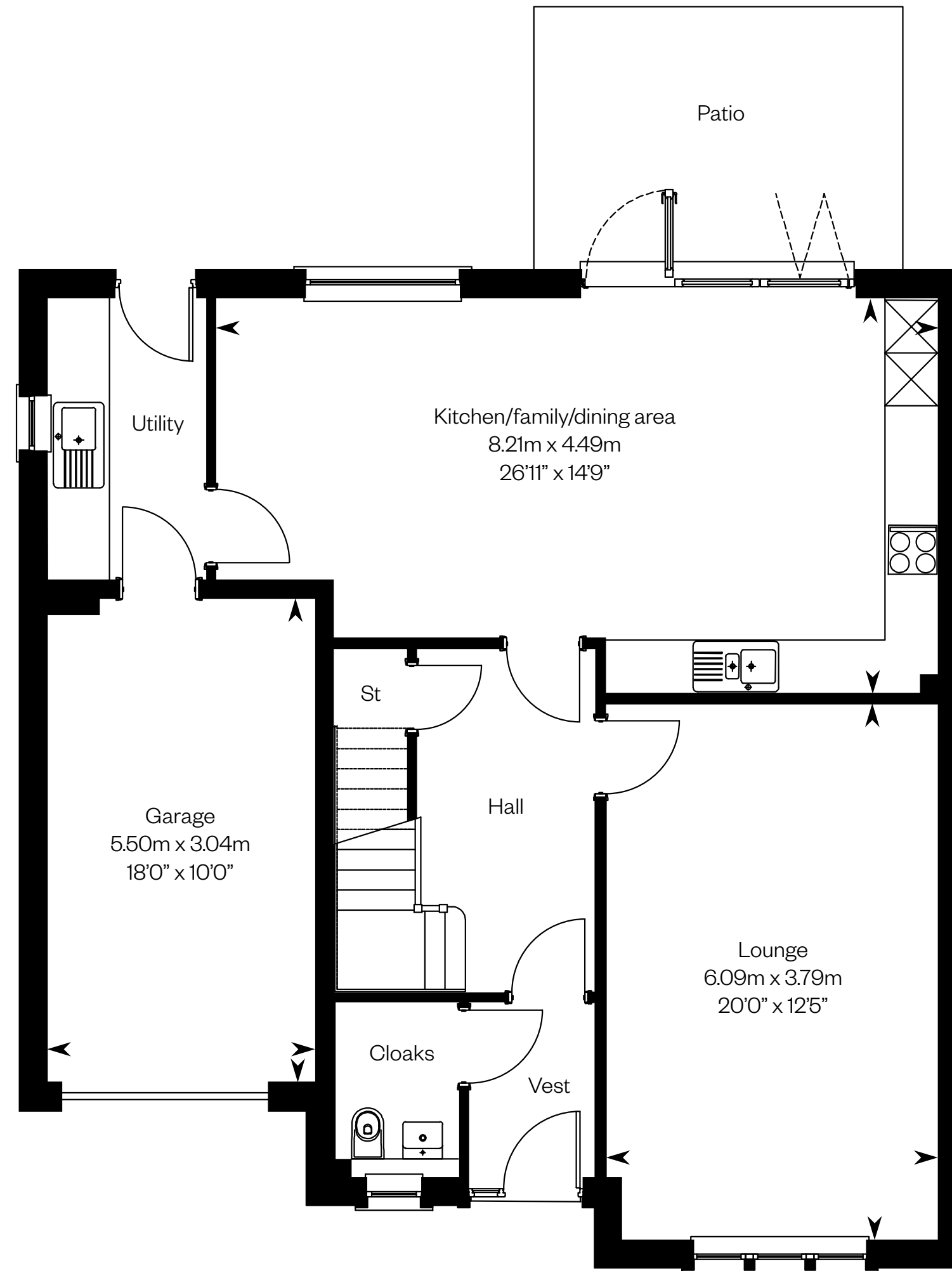


Computer generated image - The Darroch

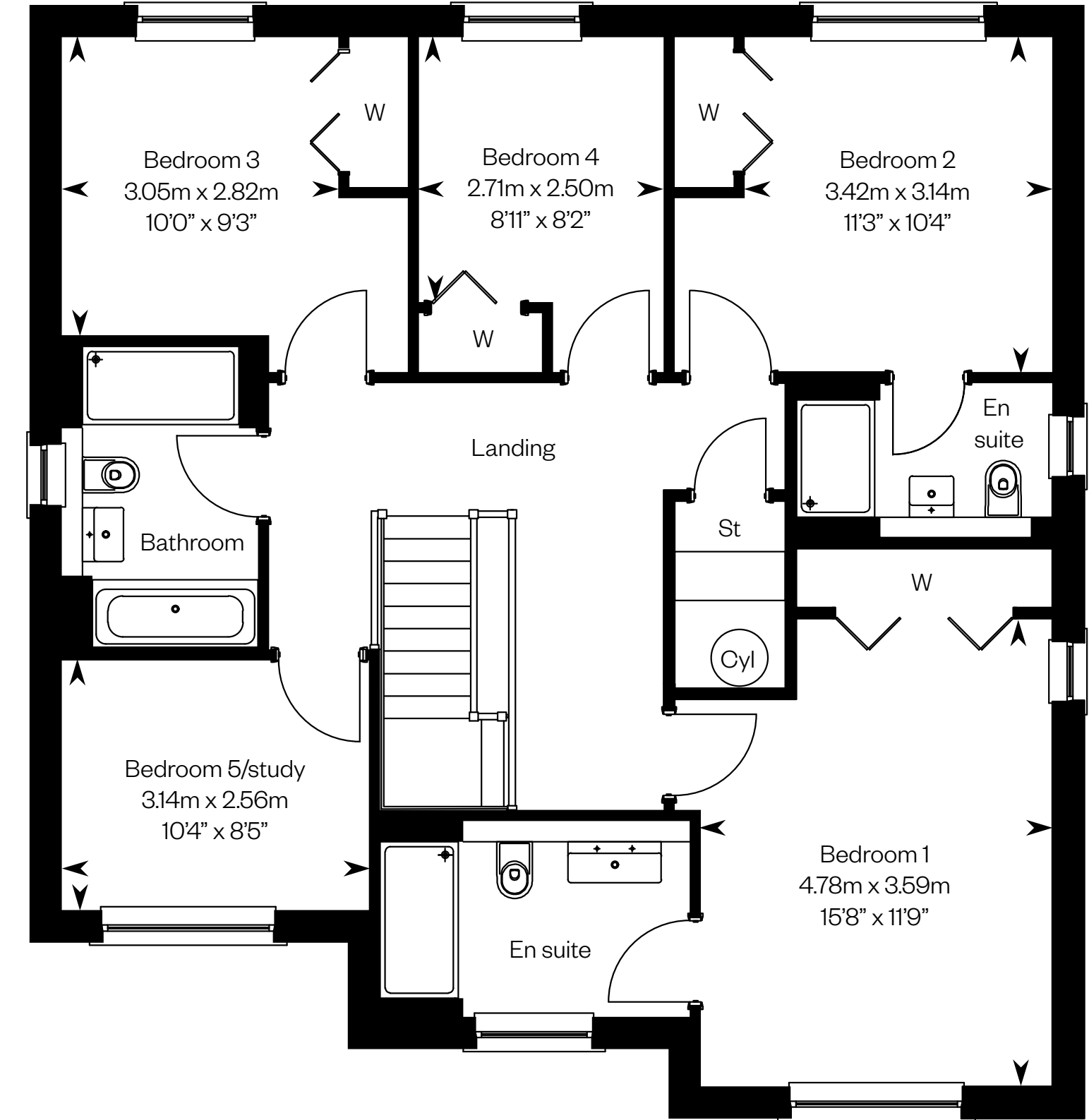
# The Darroch

Plots 17, 26, 38, 40 – as shown

Plots 23, 28, 32 – handed



Ground floor



First floor

Please ask your Sales Consultant for further details. ST: Store cupboard. W: Wardrobe.

IMPORTANT NOTICE TO CUSTOMERS: The Consumer Protection from Unfair Trading Regulations 2008. Cala Homes (East) Limited operates a policy of continual product development and the specifications outlined in this brochure are indicative only. The computer generated images and photographs do not necessarily represent the actual finishings/elevation or treatments, landscaping, furnishings and fittings at this development. Information contained is accurate at date of publication on 20.01.23. See the main brochure for the full Consumer Protection statement.

# The Dewar

5 bedroom detached home



Computer generated image - The Dewar

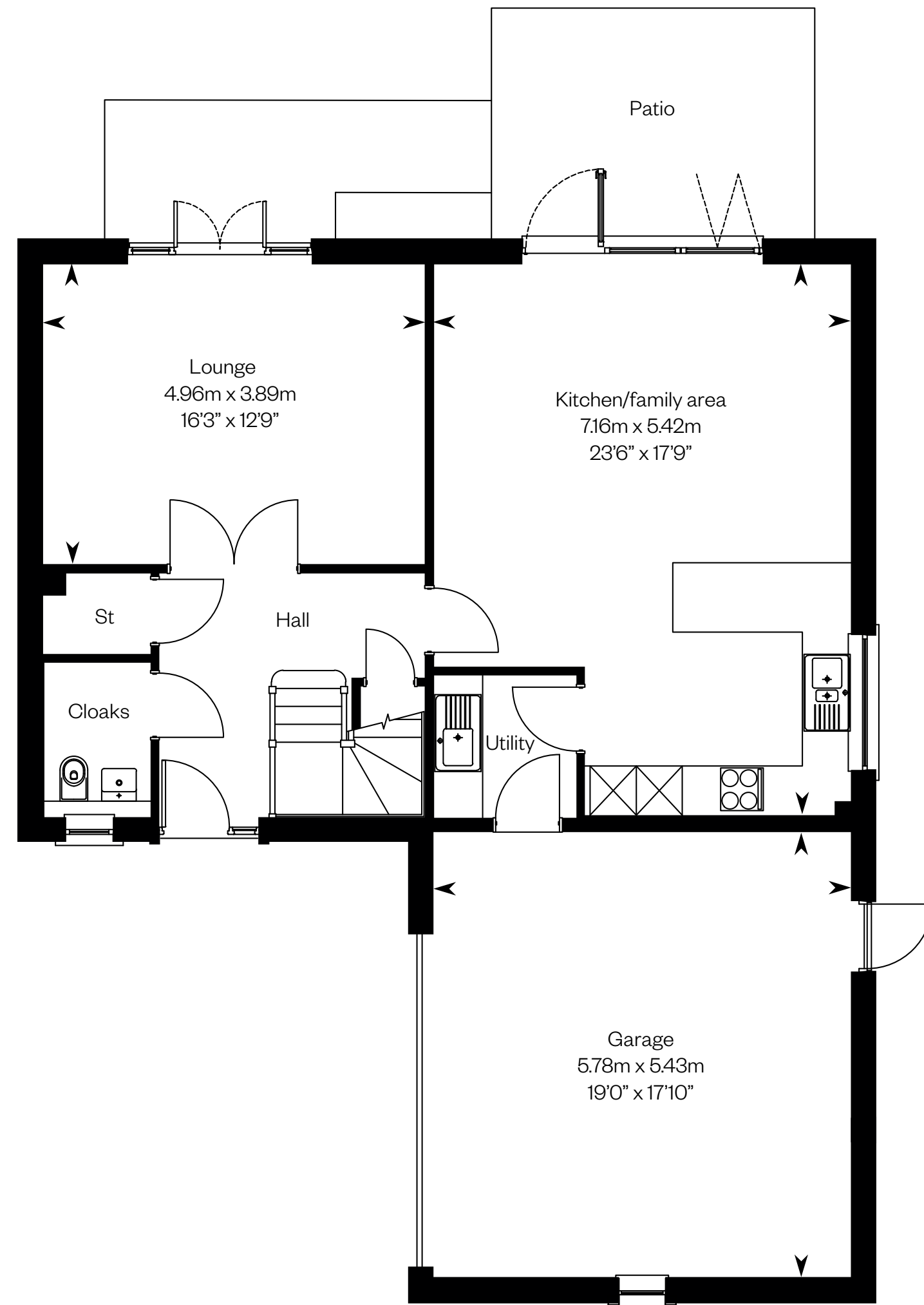
# The Dewar

Plots 36, 51 – as shown

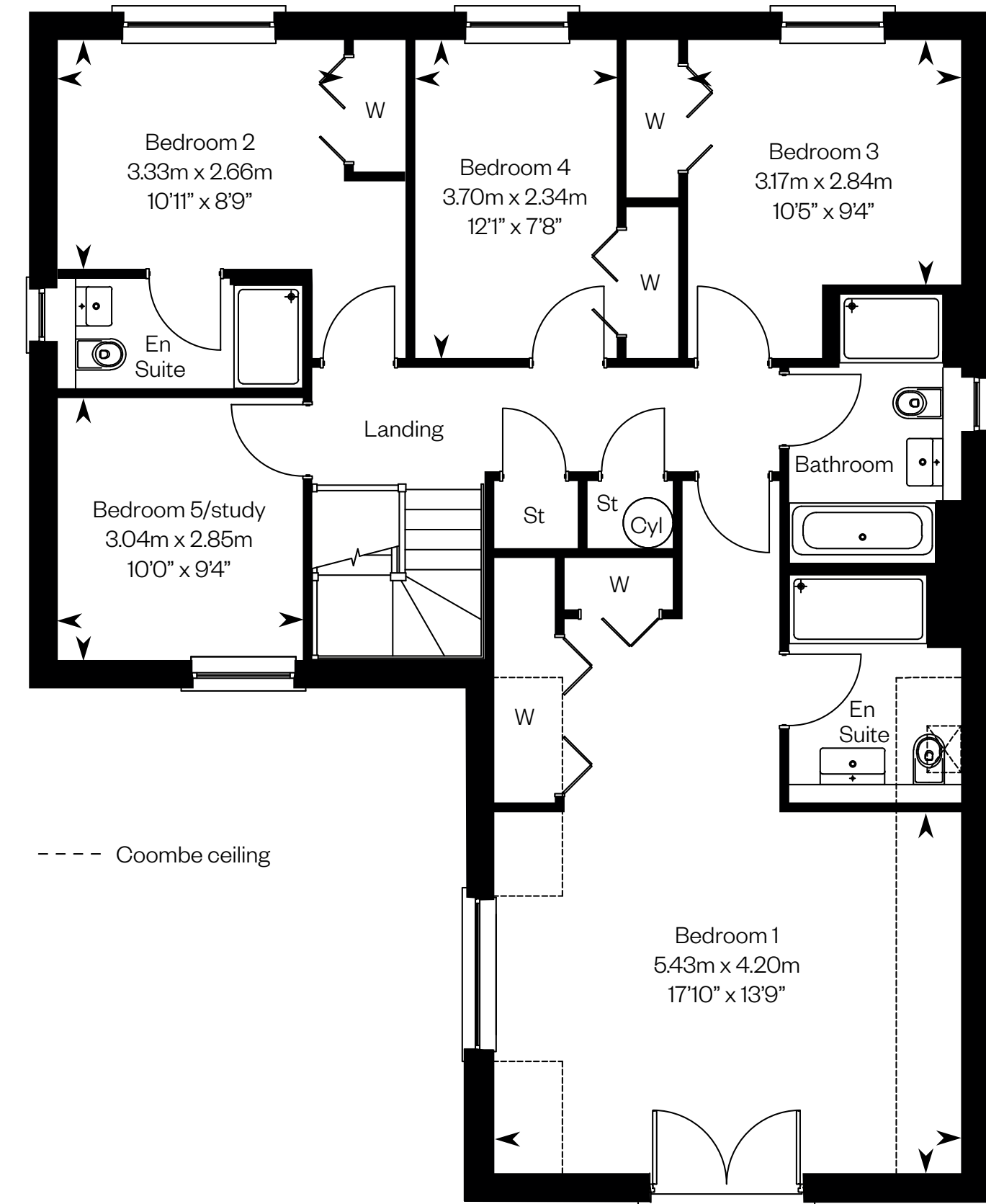
Plot 45 – handed

Plot 43 – has a slightly different layout.

Please speak to a sales advisor for details.



Ground floor



First floor

Please ask your Sales Consultant for further details. ST: Store cupboard. W: Wardrobe.

IMPORTANT NOTICE TO CUSTOMERS: The Consumer Protection from Unfair Trading Regulations 2008. Cala Homes (East) Limited operates a policy of continual product development and the specifications outlined in this brochure are indicative only. The computer generated images and photographs do not necessarily represent the actual finishings/elevation or treatments, landscaping, furnishings and fittings at this development. Information contained is accurate at date of publication on 20.01.23. See the main brochure for the full Consumer Protection statement.

# The Elliot

4 bedroom detached home with study

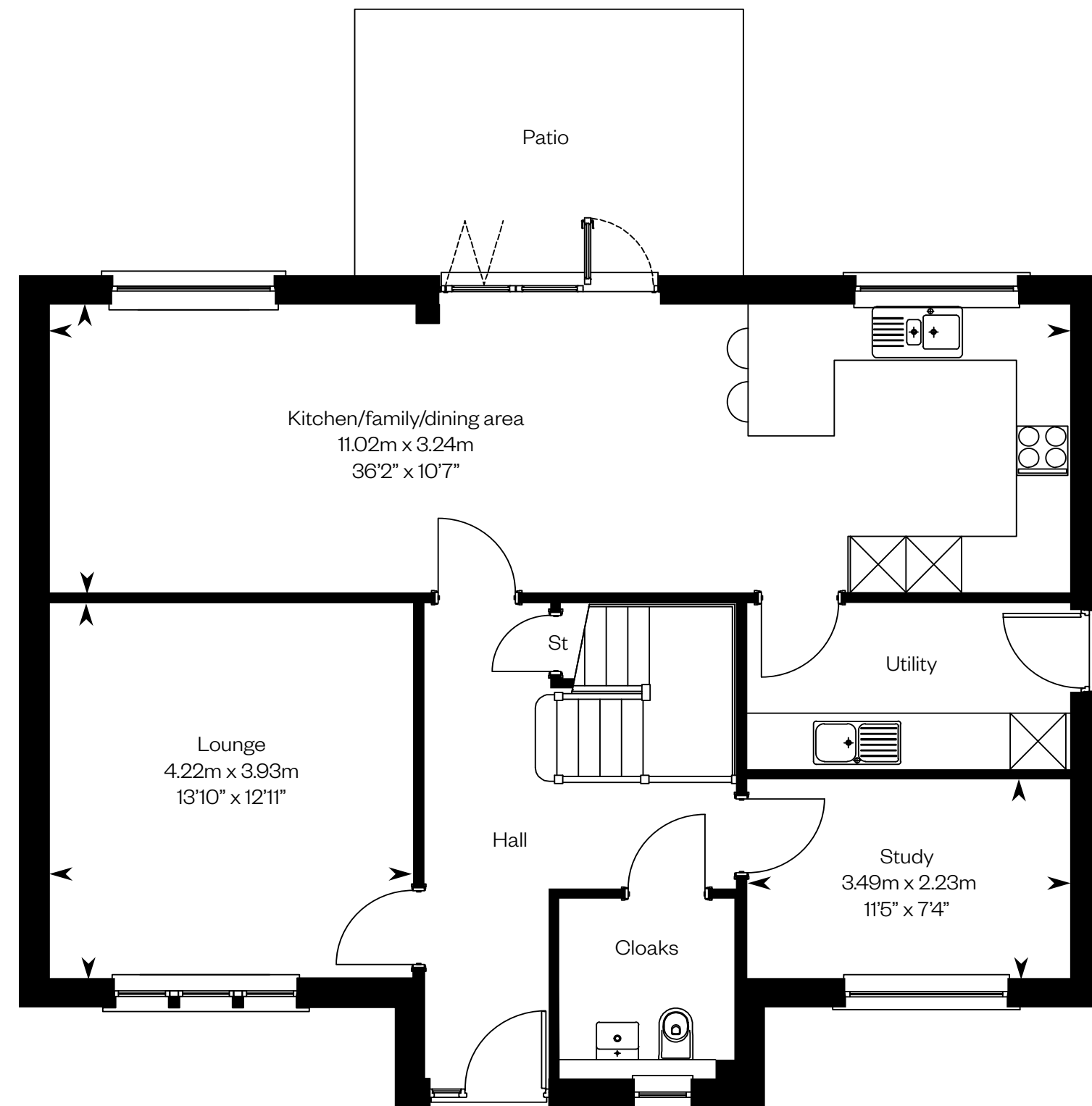


Computer generated image - The Elliot

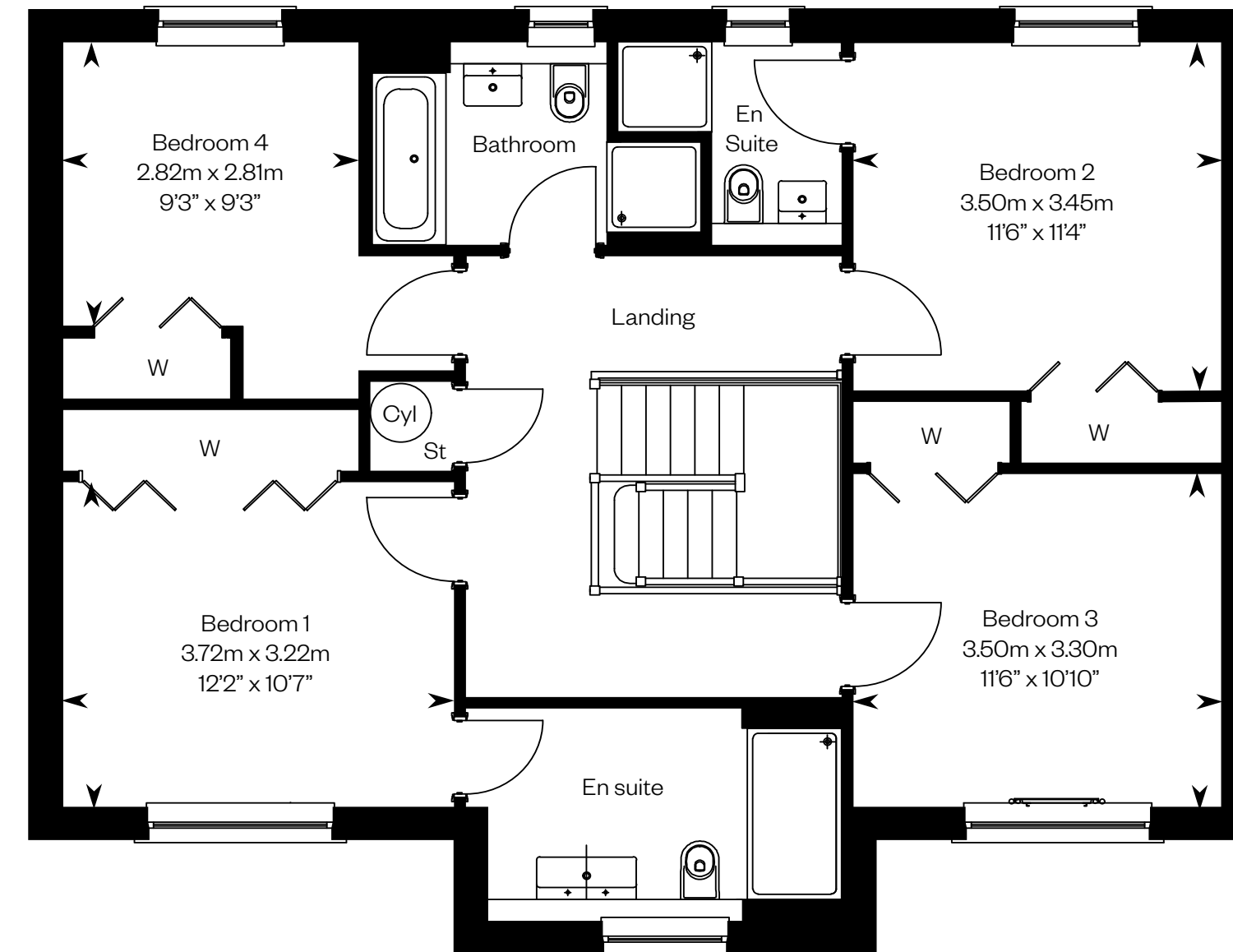
# The Elliot

Plots 27, 56, 59 – as shown

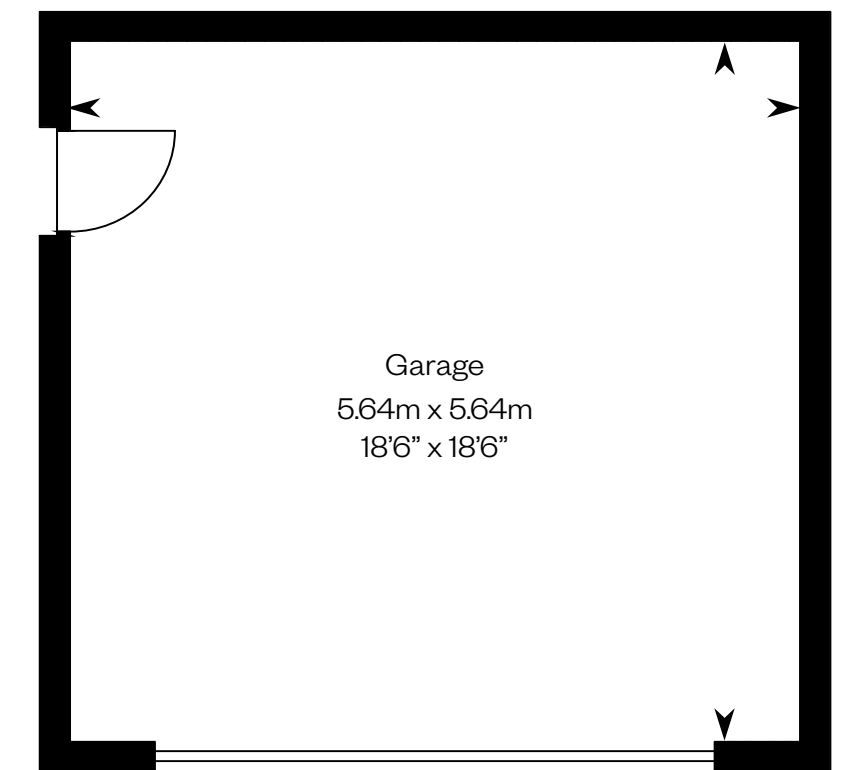
Plots 24, 35, 57, 58 – handed



Ground floor



First floor



Please ask your Sales Consultant for further details. ST: Store cupboard. W: Wardrobe.

IMPORTANT NOTICE TO CUSTOMERS: The Consumer Protection from Unfair Trading Regulations 2008. Cala Homes (East) Limited operates a policy of continual product development and the specifications outlined in this brochure are indicative only. The computer generated images and photographs do not necessarily represent the actual finishings/elevation or treatments, landscaping, furnishings and fittings at this development. Information contained is accurate at date of publication on 20.01.23. See the main brochure for the full Consumer Protection statement.



# The Garvie

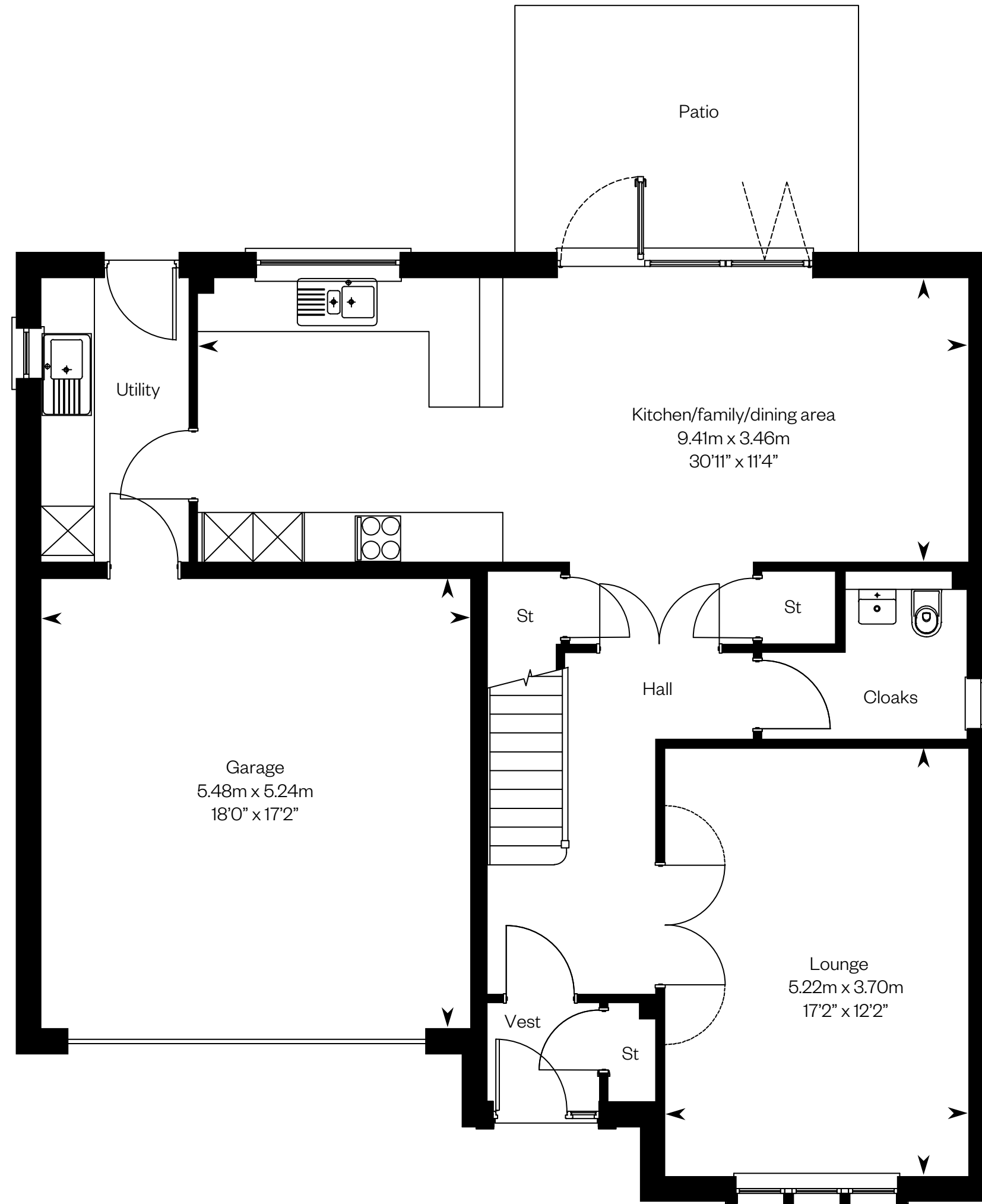
5 bedroom detached home



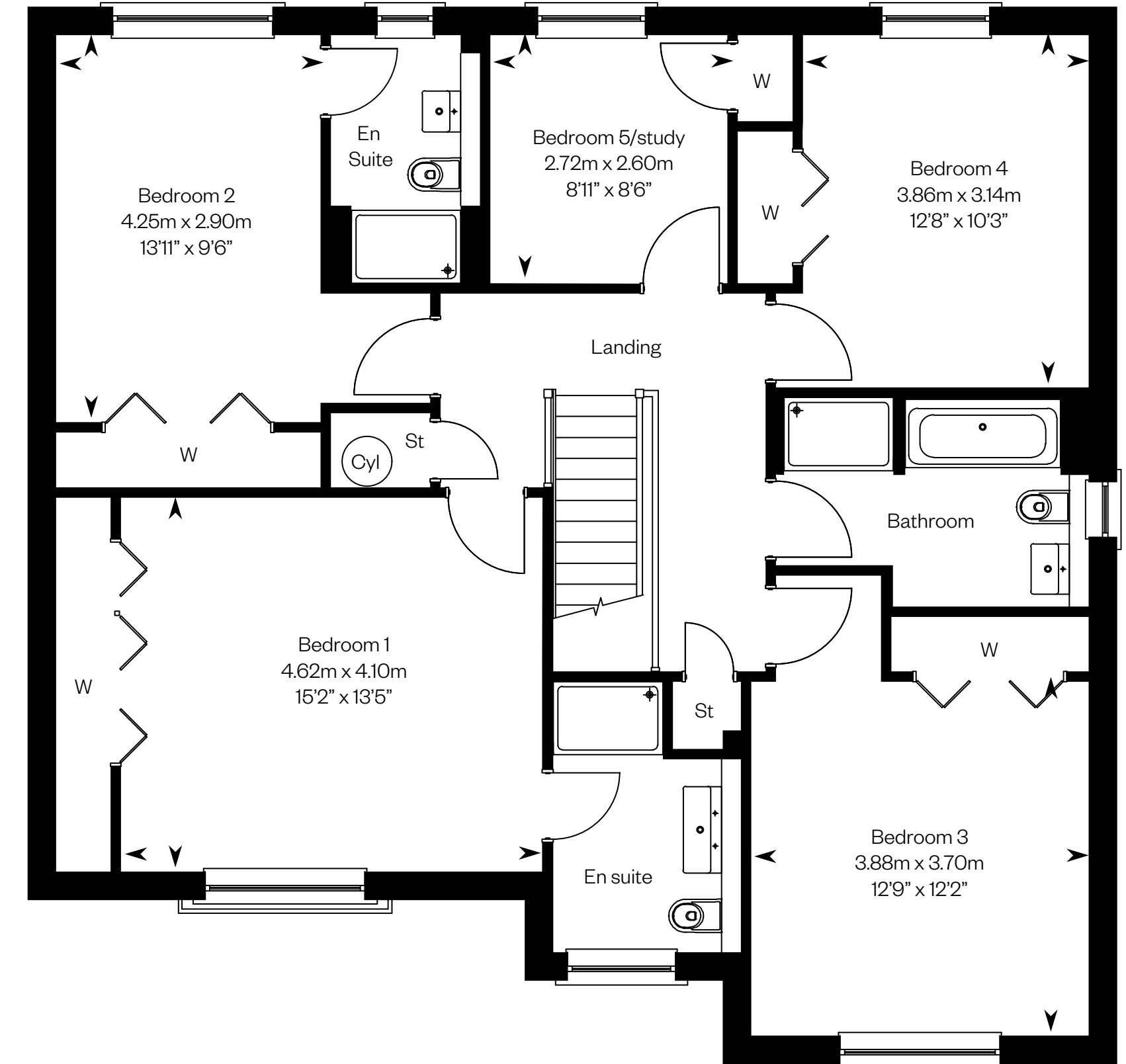
# The Garvie

Plots 33, 37, 39, 41, 50 – as shown

Plots 20, 22, 34, 46, 47 – handed



Ground floor



First floor

Please ask your Sales Consultant for further details. ST: Store cupboard. W: Wardrobe.

IMPORTANT NOTICE TO CUSTOMERS: The Consumer Protection from Unfair Trading Regulations 2008. Cala Homes (East) Limited operates a policy of continual product development and the specifications outlined in this brochure are indicative only. The computer generated images and photographs do not necessarily represent the actual finishings/elevation or treatments, landscaping, furnishings and fittings at this development. Information contained is accurate at date of publication on 20.01.23. See the main brochure for the full Consumer Protection statement.

# The Kennedy

5 bedroom detached home

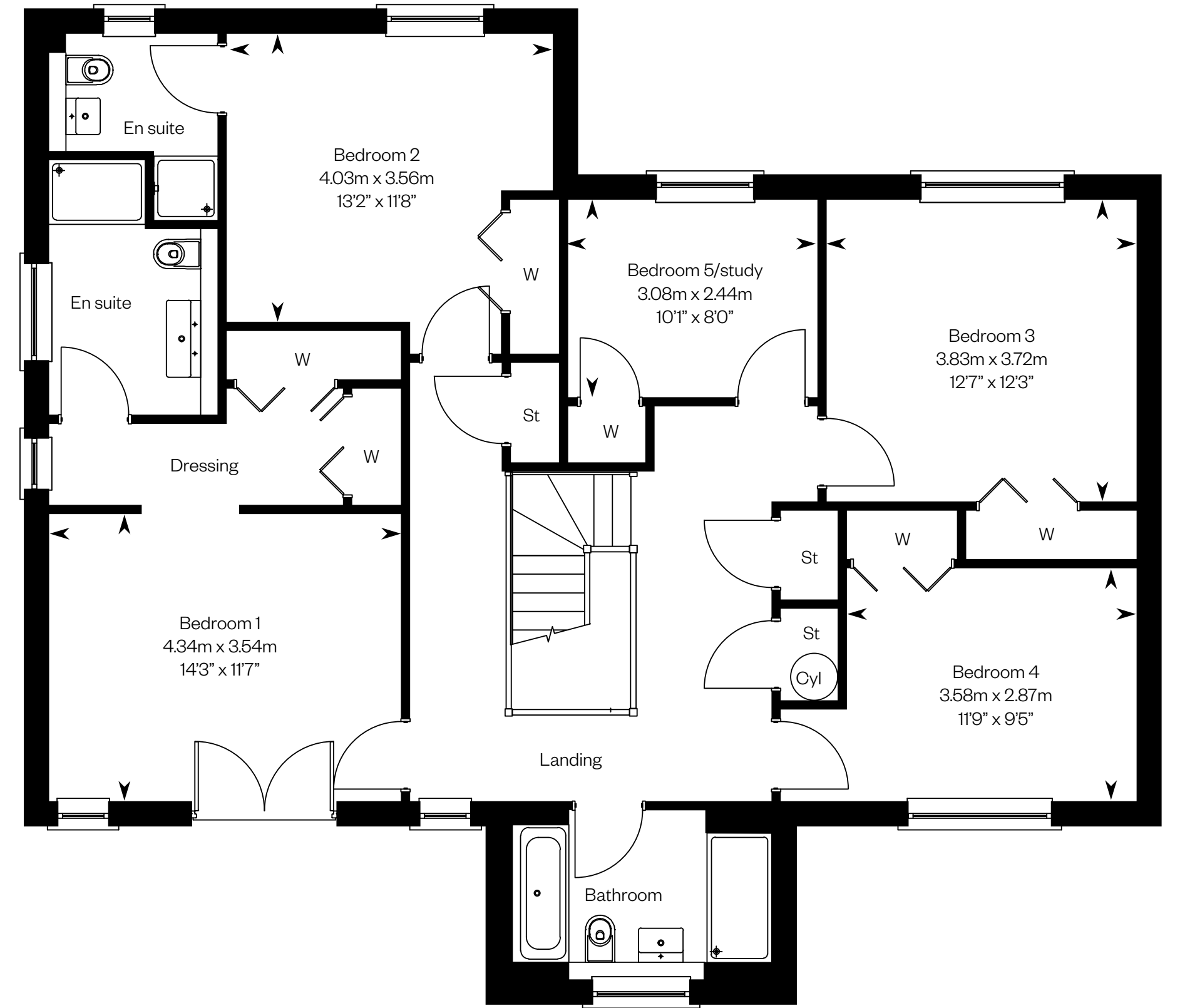


# The Kennedy

Plots 21, 31 – handed



Ground floor



First floor

Please ask your Sales Consultant for further details. ST: Store cupboard. W: Wardrobe.

IMPORTANT NOTICE TO CUSTOMERS: The Consumer Protection from Unfair Trading Regulations 2008. Cala Homes (East) Limited operates a policy of continual product development and the specifications outlined in this brochure are indicative only. The computer generated images and photographs do not necessarily represent the actual finishings/elevation or treatments, landscaping, furnishings and fittings at this development. Information contained is accurate at date of publication on 20.01.23. See the main brochure for the full Consumer Protection statement.

# The Lowther

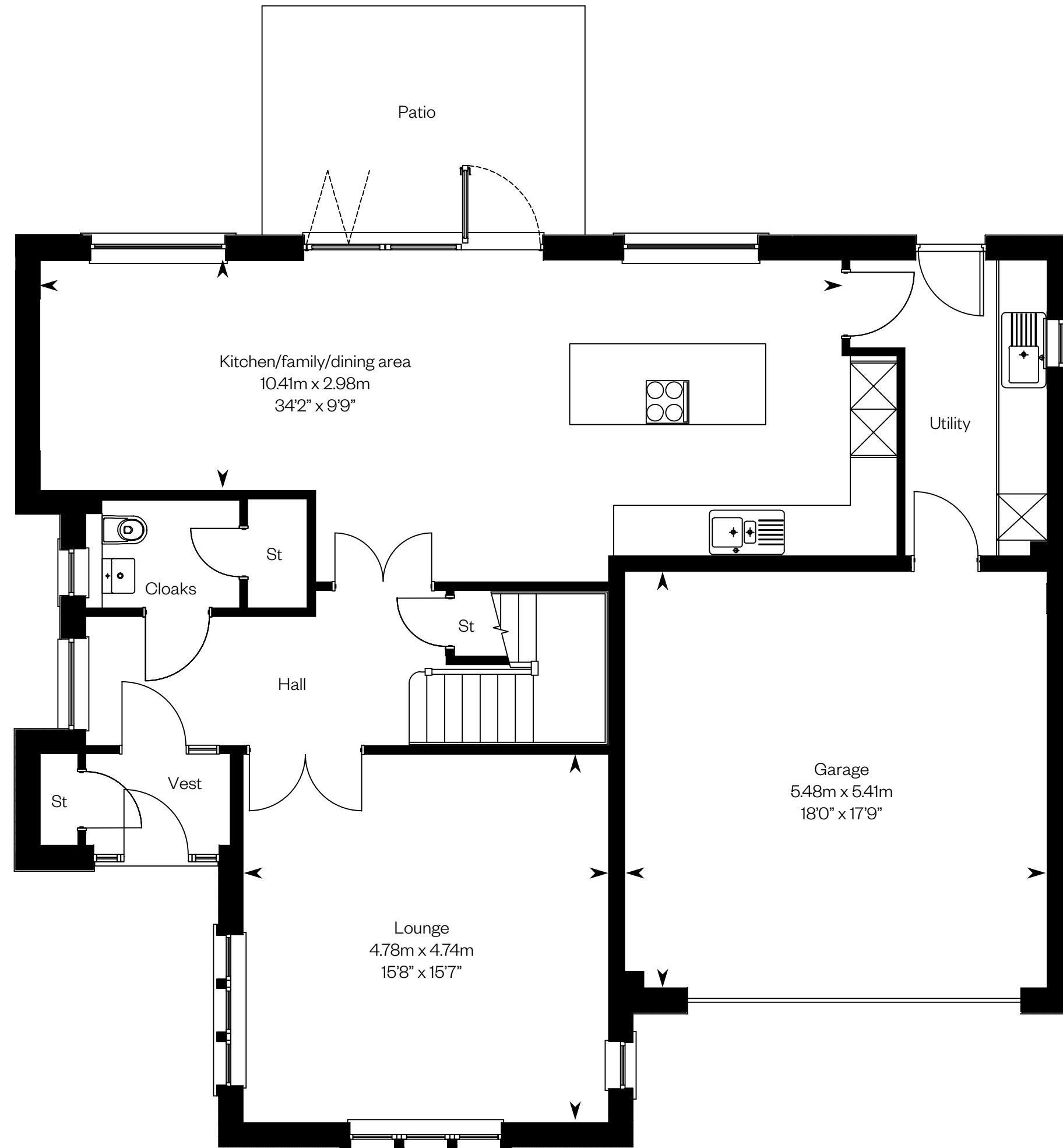
5 bedroom detached home



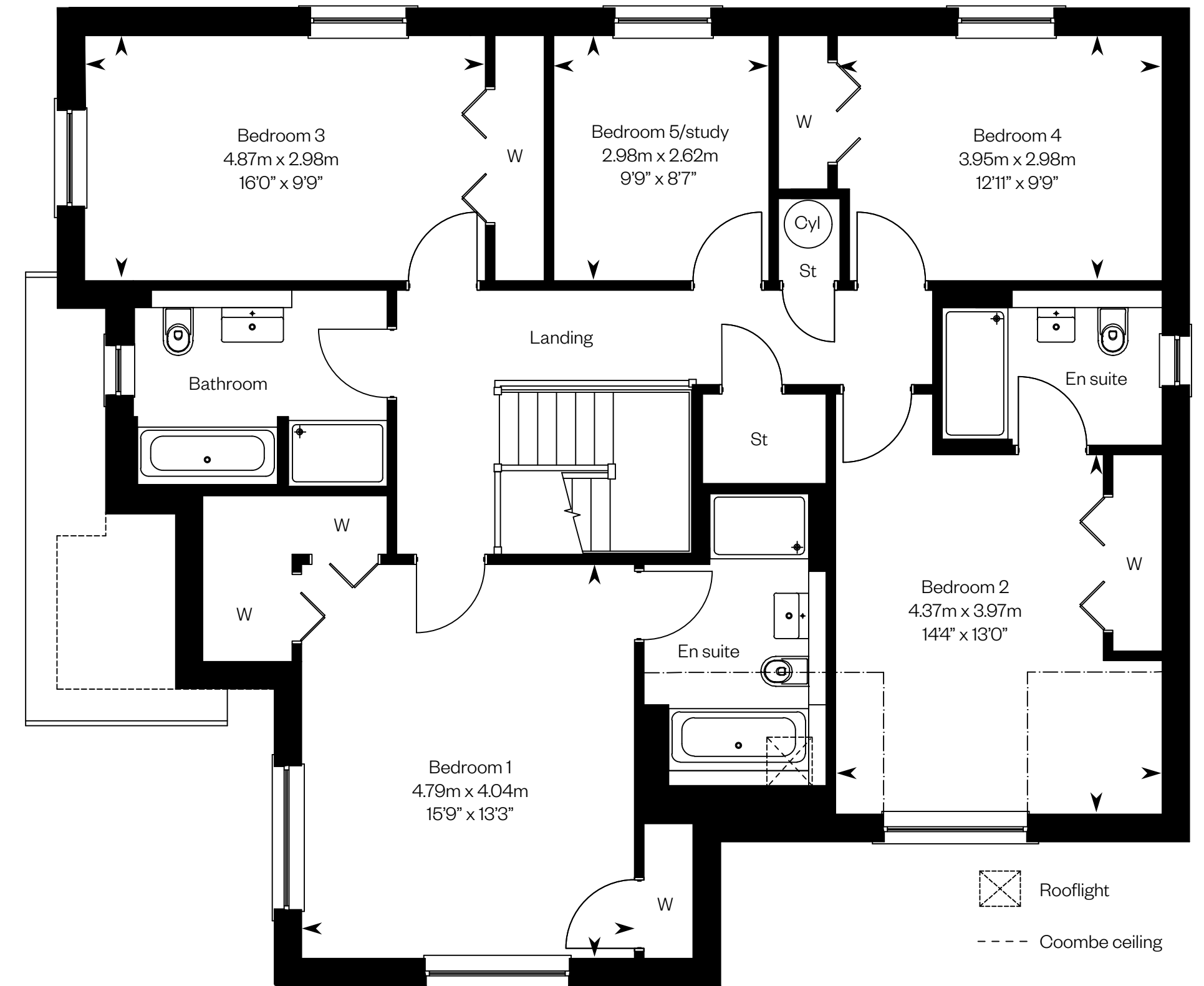
# The Lowther

Plots 30, 49 – as shown

Plots 42,48 – handed



Ground floor



First floor

Please ask your Sales Consultant for further details. ST: Store cupboard. W: Wardrobe.

IMPORTANT NOTICE TO CUSTOMERS: The Consumer Protection from Unfair Trading Regulations 2008. Cala Homes (East) Limited operates a policy of continual product development and the specifications outlined in this brochure are indicative only. The computer generated images and photographs do not necessarily represent the actual finishings/elevation or treatments, landscaping, furnishings and fittings at this development. Information contained is accurate at date of publication on 20.01.23. See the main brochure for the full Consumer Protection statement.

# The MacRae

5 bedroom detached home with study

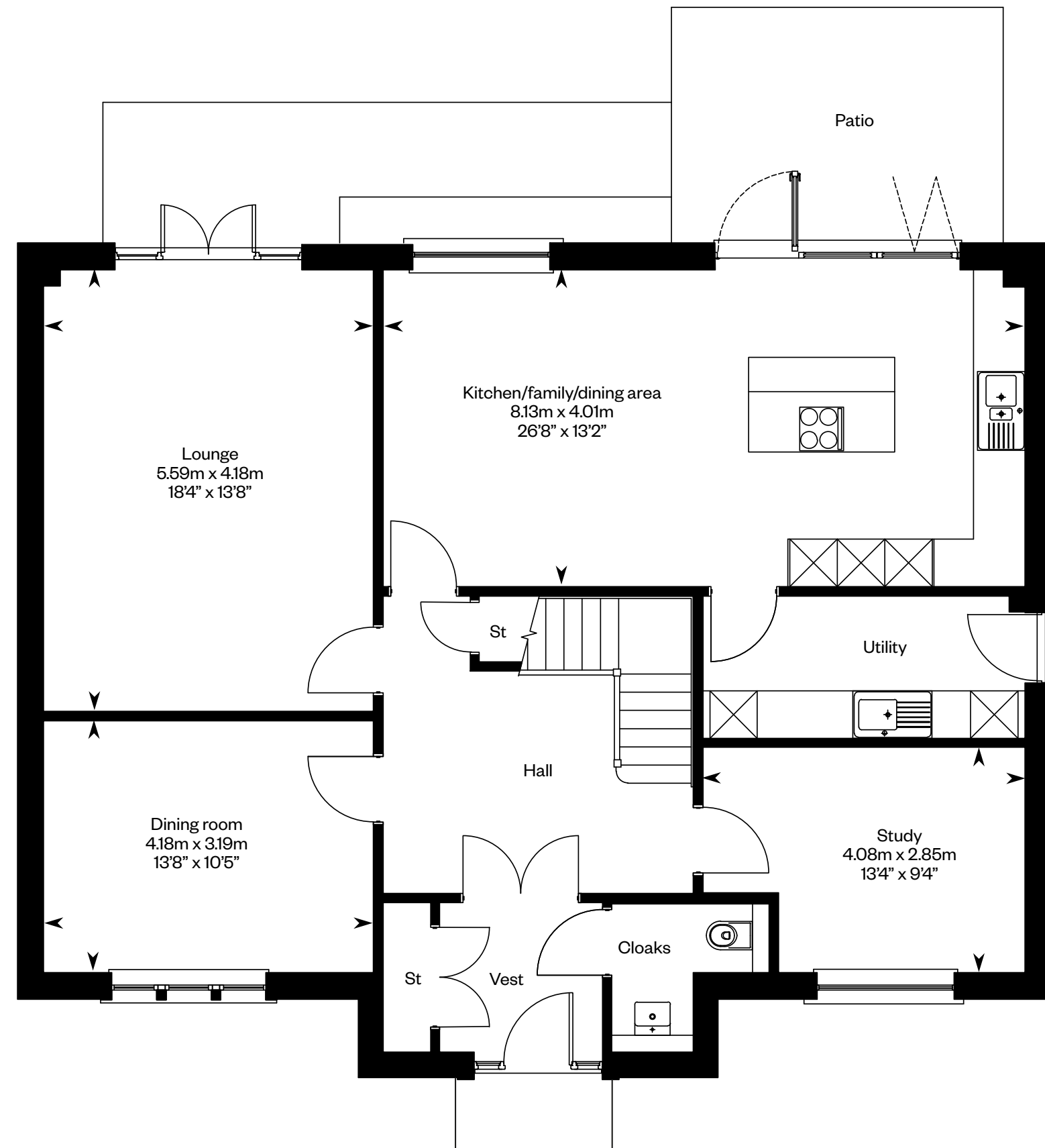


Computer generated image - The MacRae

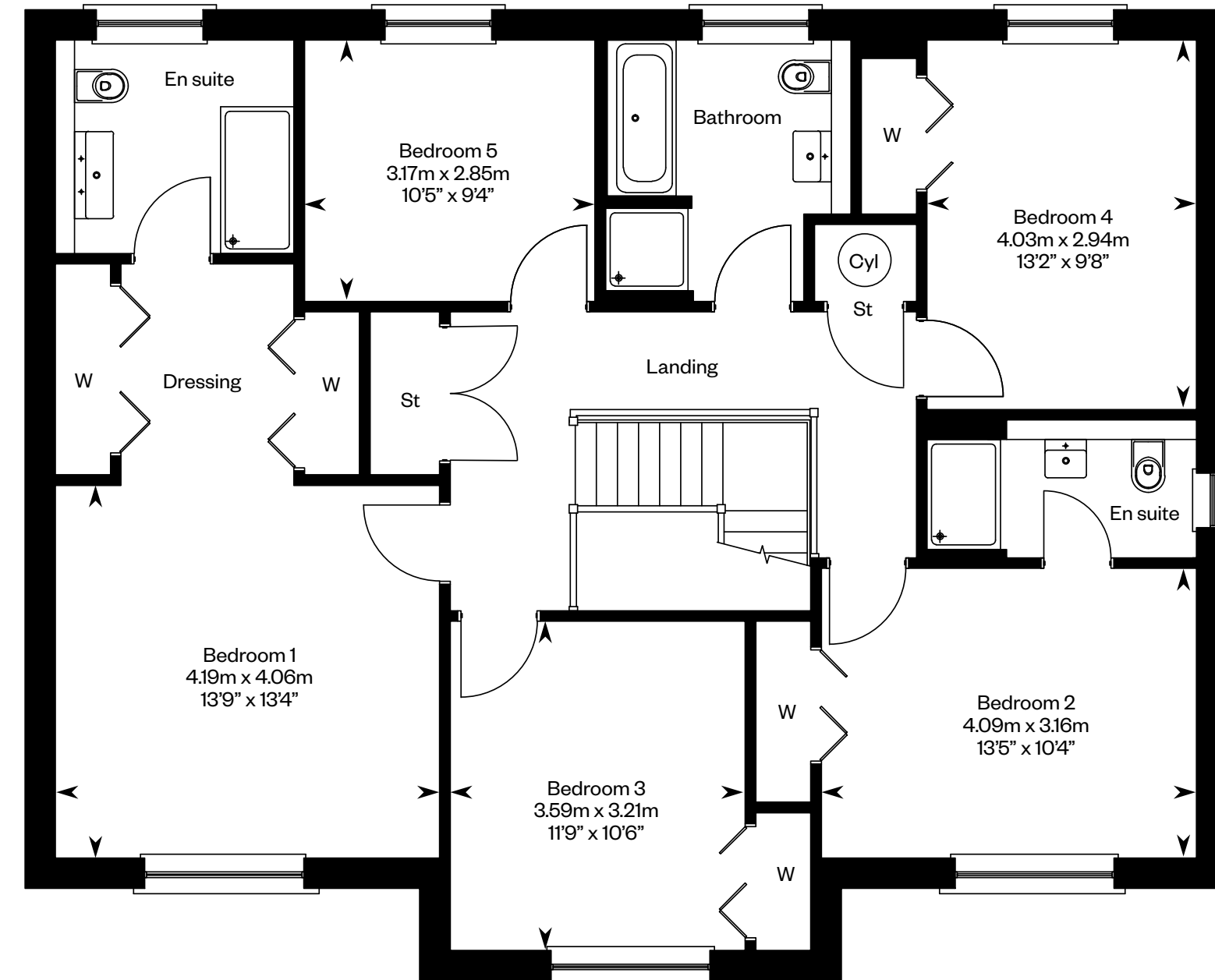
# The MacRae

Plots 19, 29, 55, 60 – as shown

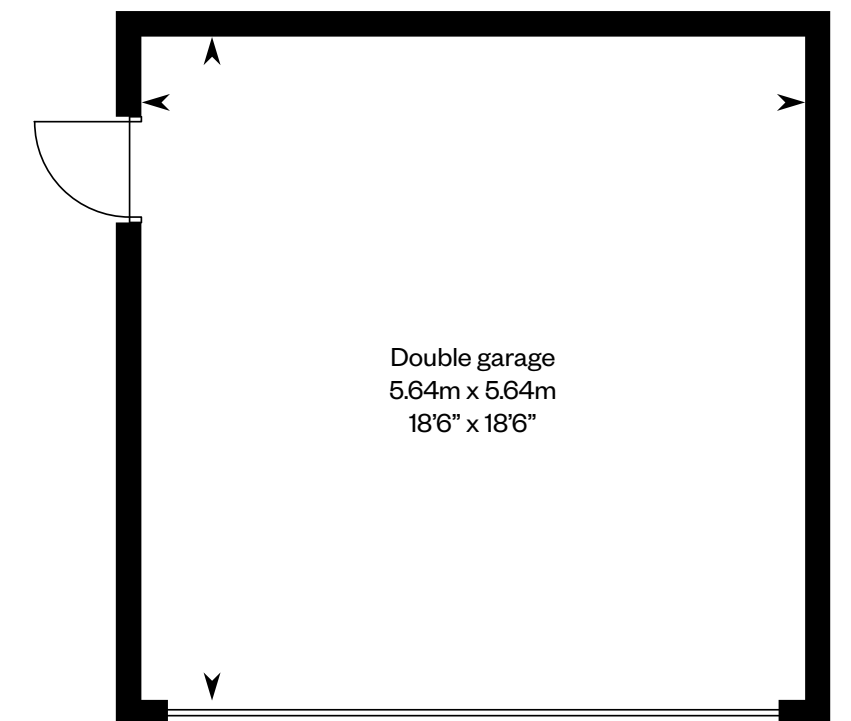
Plot 16 – handed



Ground floor



First floor



Please ask your Sales Consultant for further details. ST: Store cupboard. W: Wardrobe.

IMPORTANT NOTICE TO CUSTOMERS: The Consumer Protection from Unfair Trading Regulations 2008. Cala Homes (East) Limited operates a policy of continual product development and the specifications outlined in this brochure are indicative only. The computer generated images and photographs do not necessarily represent the actual finishings/elevation or treatments, landscaping, furnishings and fittings at this development. Information contained is accurate at date of publication on 20.01.23. See the main brochure for the full Consumer Protection statement.



# The Melville

5 bedroom detached home with study

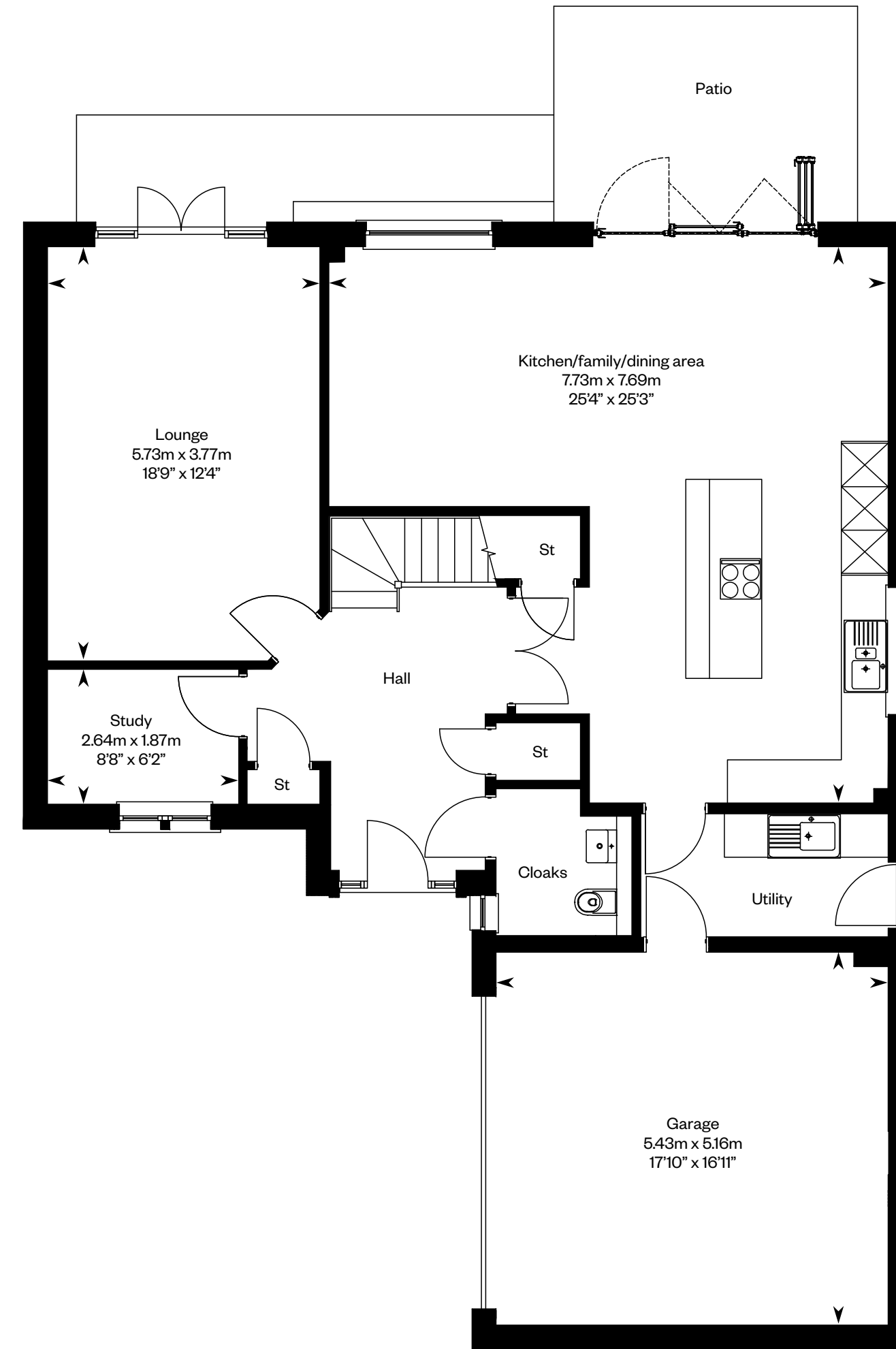


Computer generated image - The Melville

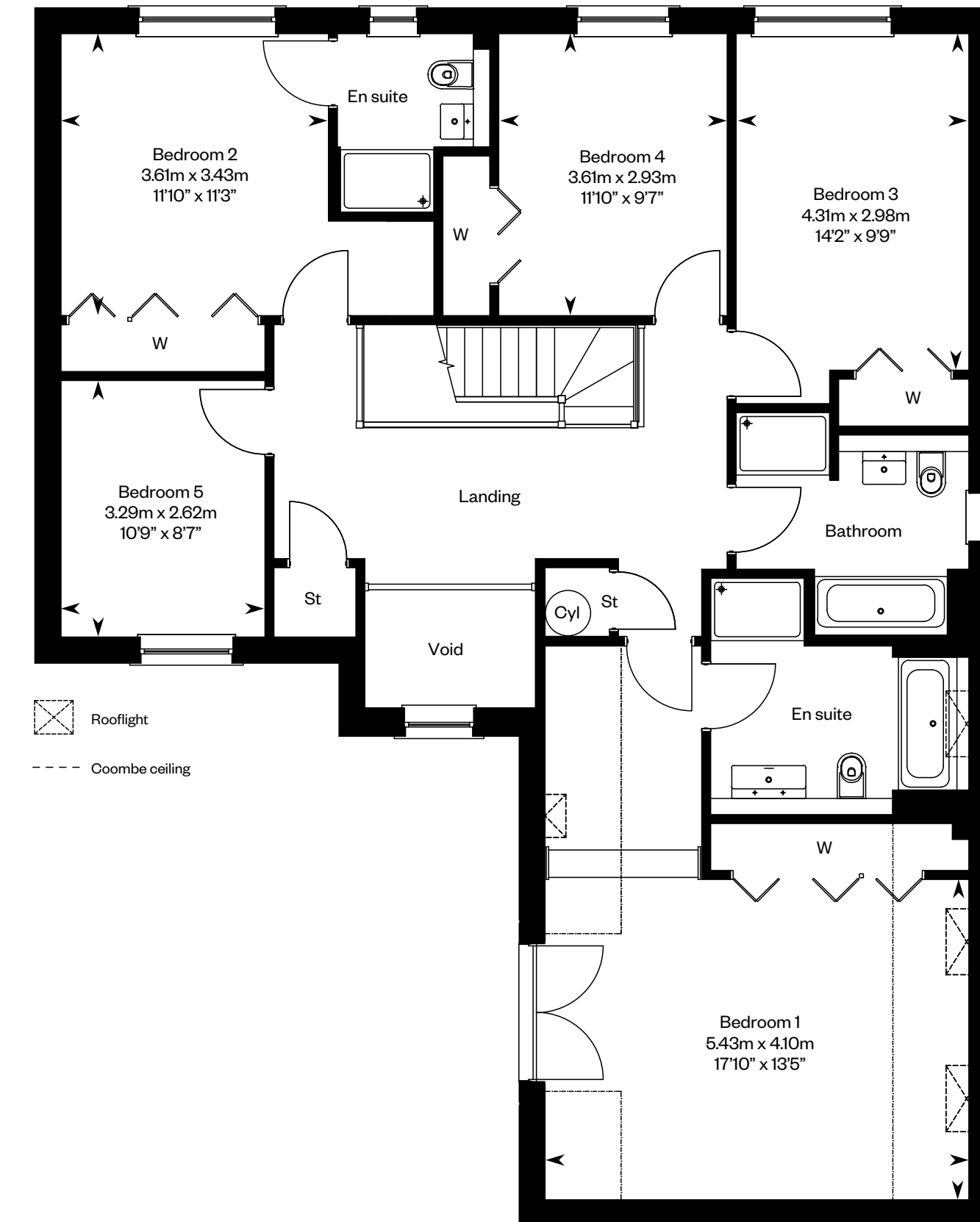
# The Melville

Plot 52 – as shown

Plot 25 – handed



Ground floor



First floor

Please ask your Sales Consultant for further details. ST: Store cupboard. W: Wardrobe.

IMPORTANT NOTICE TO CUSTOMERS: The Consumer Protection from Unfair Trading Regulations 2008. Cala Homes (East) Limited operates a policy of continual product development and the specifications outlined in this brochure are indicative only. The computer generated images and photographs do not necessarily represent the actual finishings/elevation or treatments, landscaping, furnishings and fittings at this development. Information contained is accurate at date of publication on 20.01.23. See the main brochure for the full Consumer Protection statement.

# The Moncrief

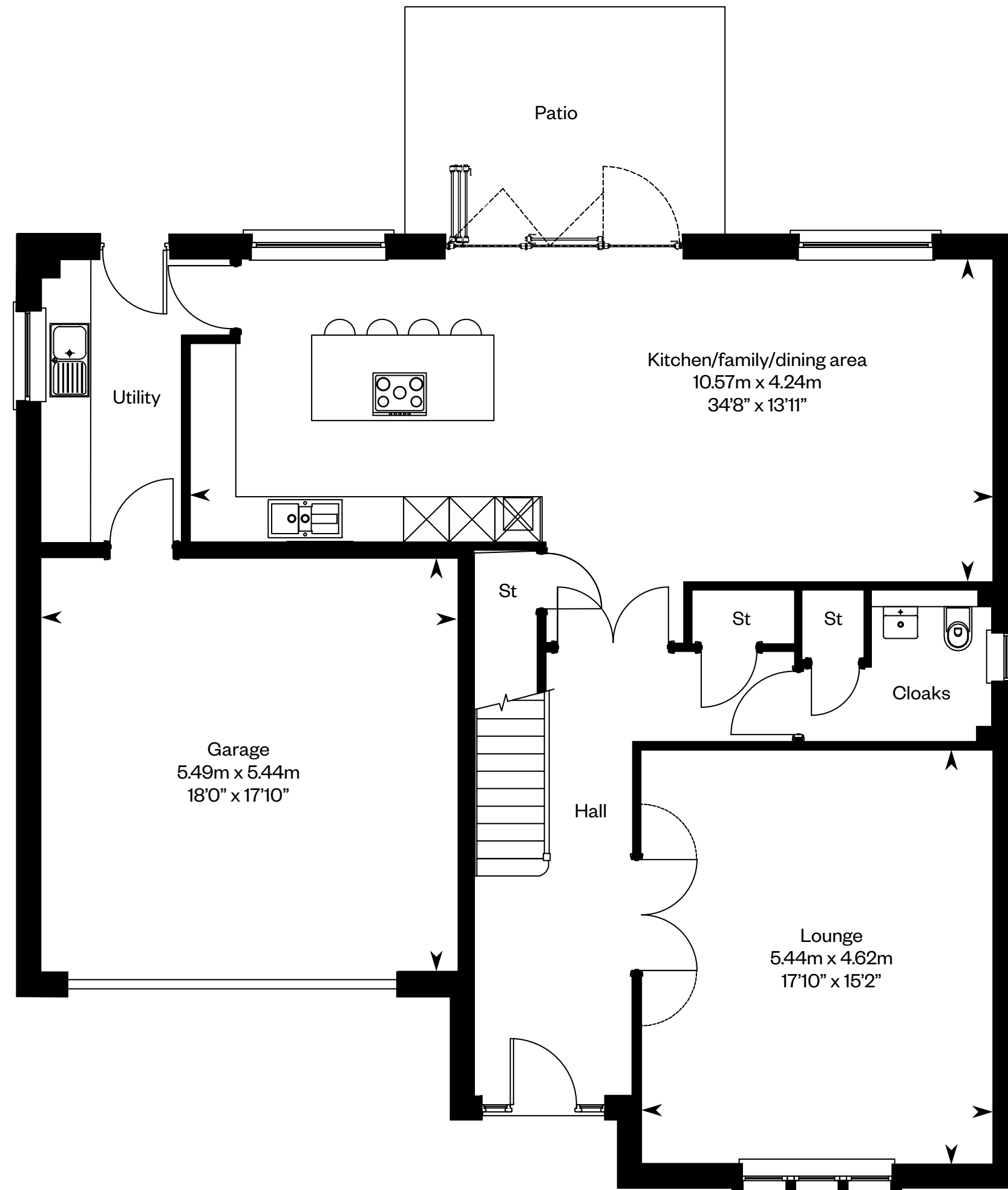
5 bedroom detached home



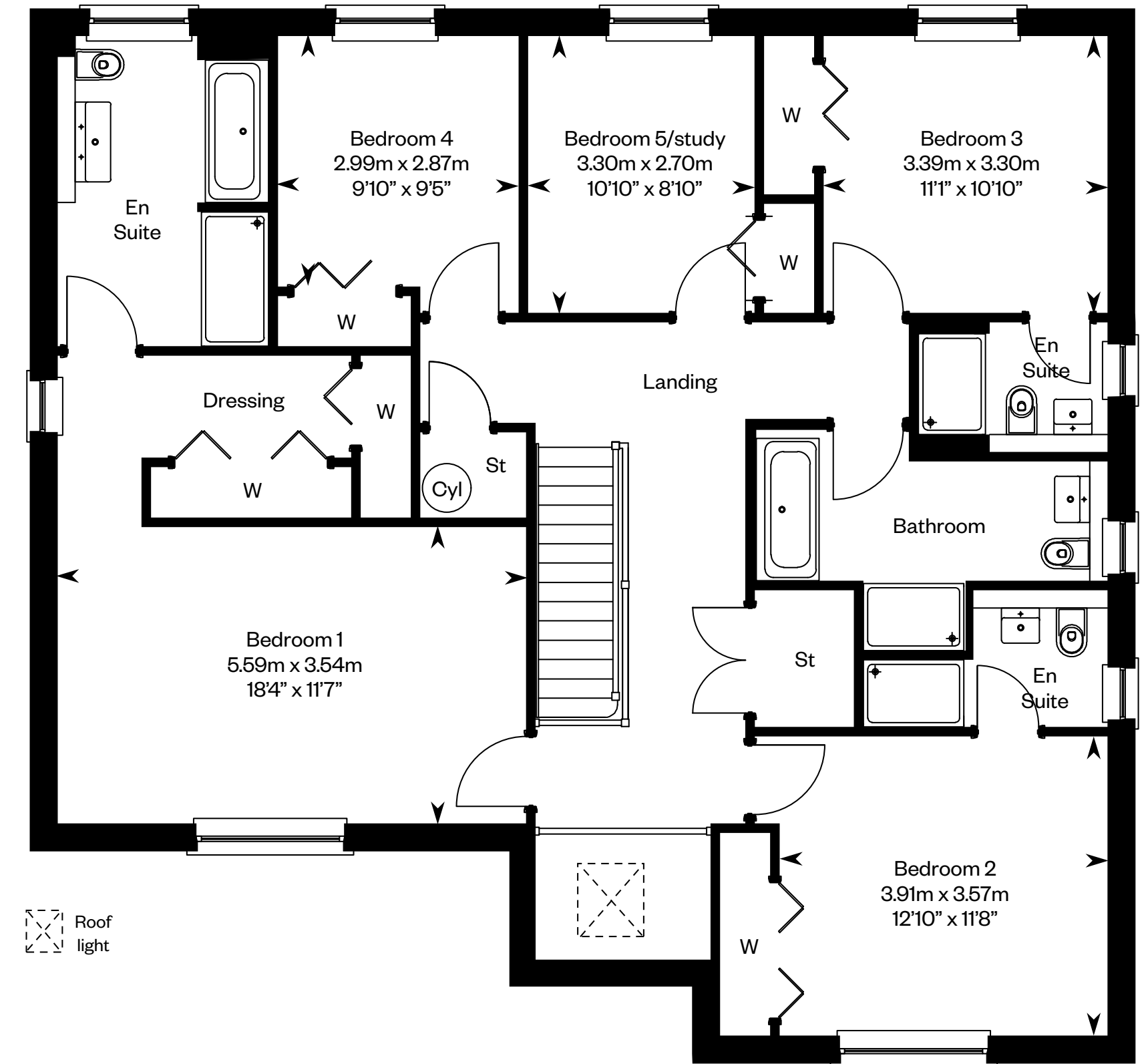
# The Moncrief

Plot 54 - as shown

Plot 53 - handed



Ground floor



First floor

Please ask your Sales Consultant for further details. ST: Store cupboard. W: Wardrobe.

IMPORTANT NOTICE TO CUSTOMERS: The Consumer Protection from Unfair Trading Regulations 2008. Cala Homes (East) Limited operates a policy of continual product development and the specifications outlined in this brochure are indicative only. The computer generated images and photographs do not necessarily represent the actual finishings/elevation or treatments, landscaping, furnishings and fittings at this development. Information contained is accurate at date of publication on 20.01.23. See the main brochure for the full Consumer Protection statement.