



The Adam

2 bedroom mid terraced
or semi detached home



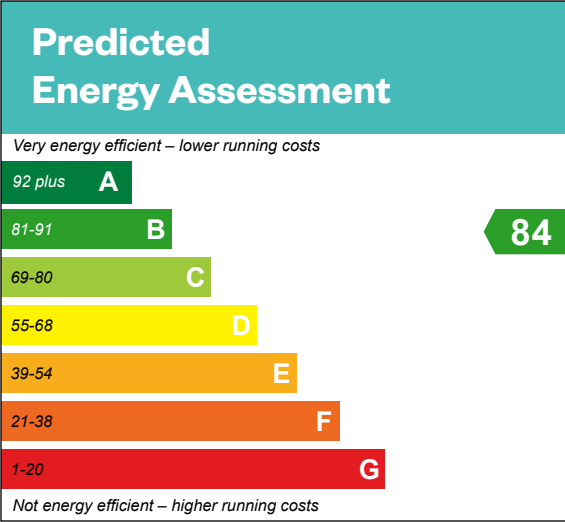
Computer generated image - The Adam

The Adam

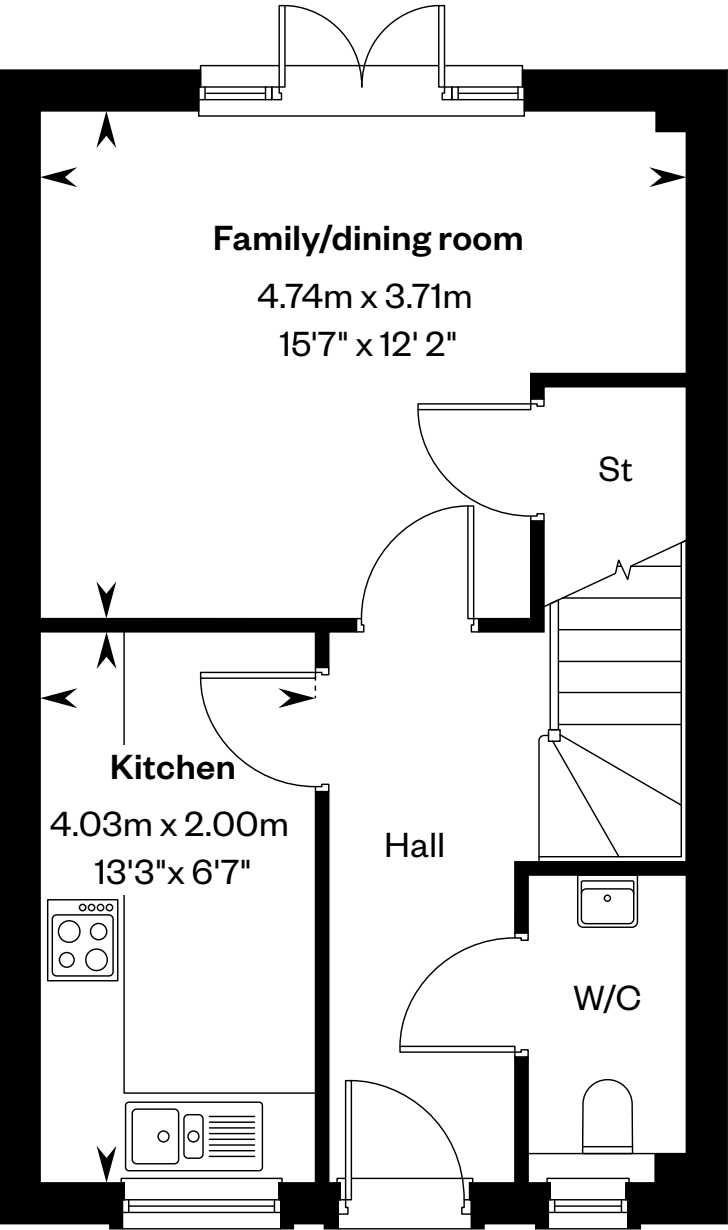
2 bedroom mid terraced or semi detached home

Plot 24 – as shown

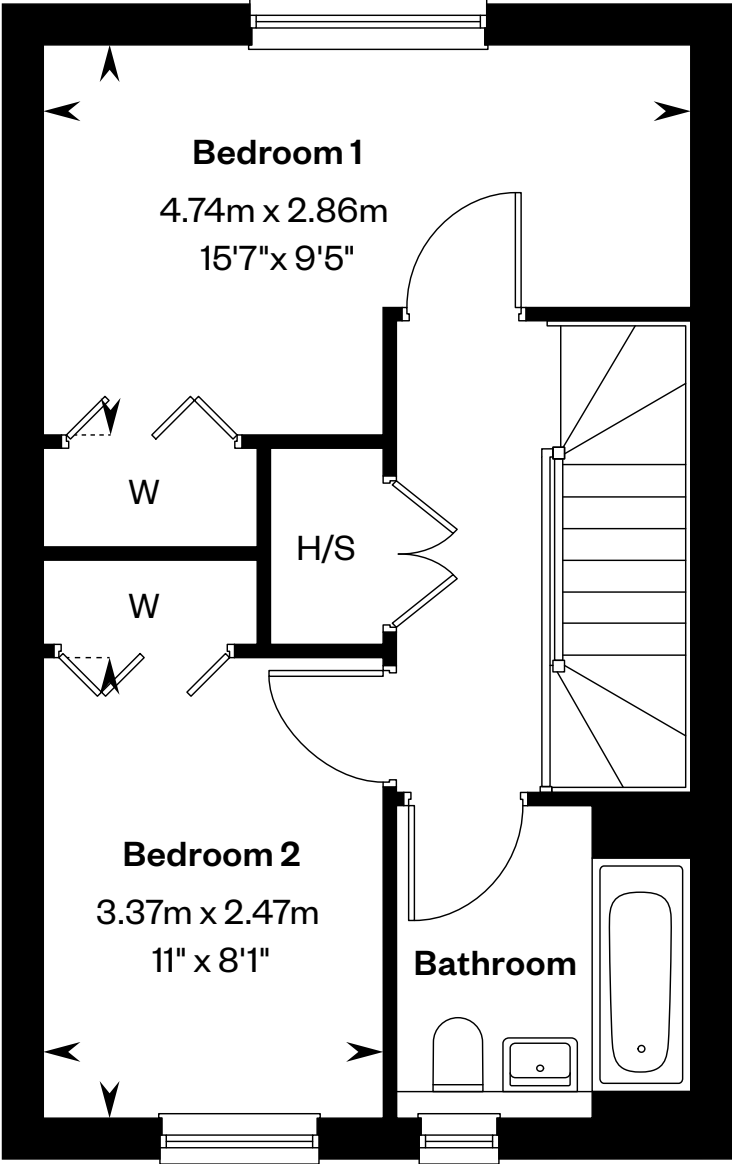
Plot 23 – handed



This is a Predicted Energy Assessment for properties that are incomplete. Once the property is completed, this rating will be updated and an official Energy Performance certificate will be created for the property.



Ground floor



First floor

H/S: Heating source cupboard. St: Store cupboard. W: Wardrobe.

IMPORTANT NOTIOE TO CUSTOMERS: The Consumer Protection from Unfair Trading Regulations 2008. Cala Homes (West) Limited operates a policy of continual product development and the specifications outlined in this brochure are indicative only. The computer generated images and photographs do not necessarily represent the actual finishings/elevation or treatments, landscaping, furnishings and fittings at this development. Information contained is accurate at date of publication on 17.06.25. See the main brochure for the full Consumer Protection statement.



The Allan

3 bedroom mid terraced home



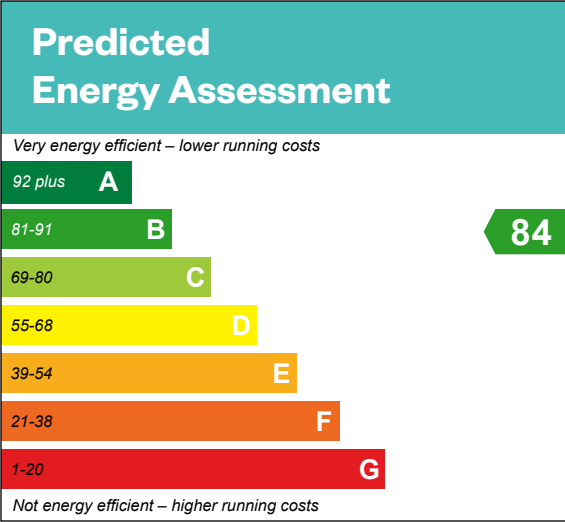
Computer generated image - The Allan

The Allan

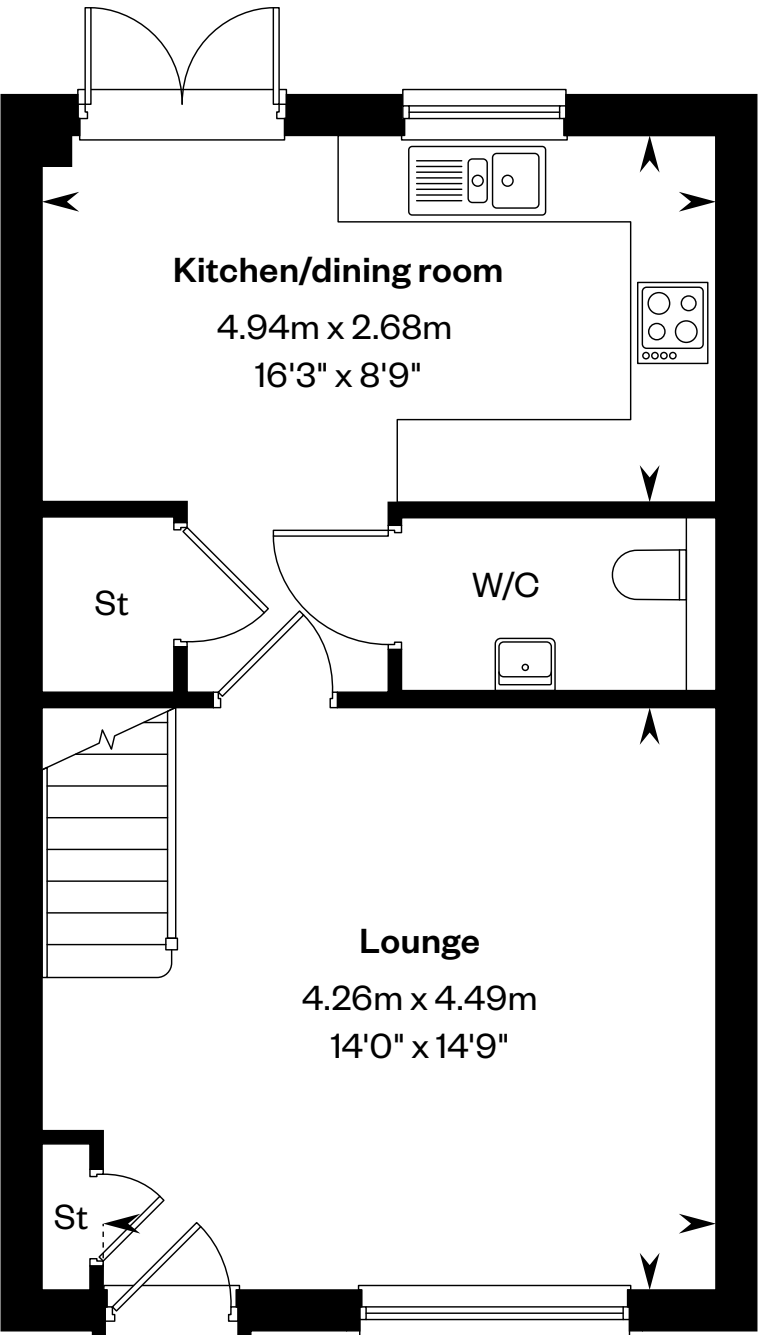
3 bedroom mid terraced home

Plots 14, 18 & 19 – as shown

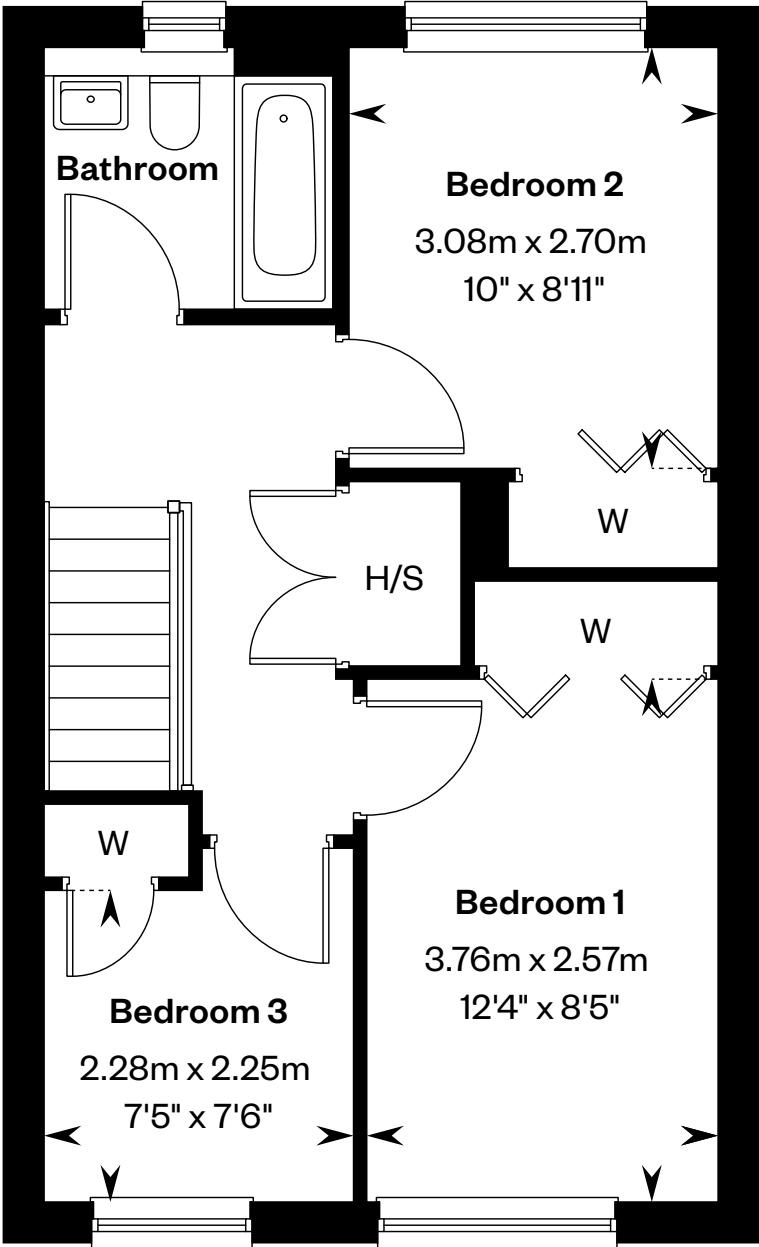
Plots 12, 13 & 17 – handed



This is a Predicted Energy Assessment for properties that are incomplete. Once the property is completed, this rating will be updated and an official Energy Performance certificate will be created for the property.



Ground floor



First floor

H/S: Heating source cupboard. St: Store cupboard. W: Wardrobe.

IMPORTANT NOTICE TO CUSTOMERS: The Consumer Protection from Unfair Trading Regulations 2008. Cala Homes (West) Limited operates a policy of continual product development and the specifications outlined in this brochure are indicative only. The computer generated images and photographs do not necessarily represent the actual finishings/elevation or treatments, landscaping, furnishings and fittings at this development. Information contained is accurate at date of publication on 17.06.25. See the main brochure for the full Consumer Protection statement.



The Arisaig

3 bedroom terraced
or semi detached home



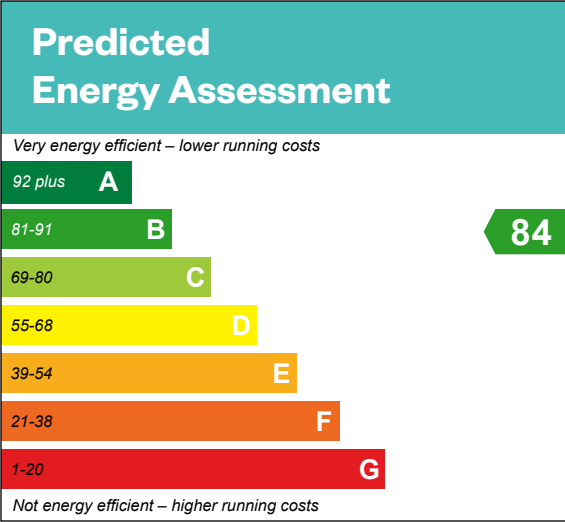
Computer generated image - The Arisaig

The Arisaig

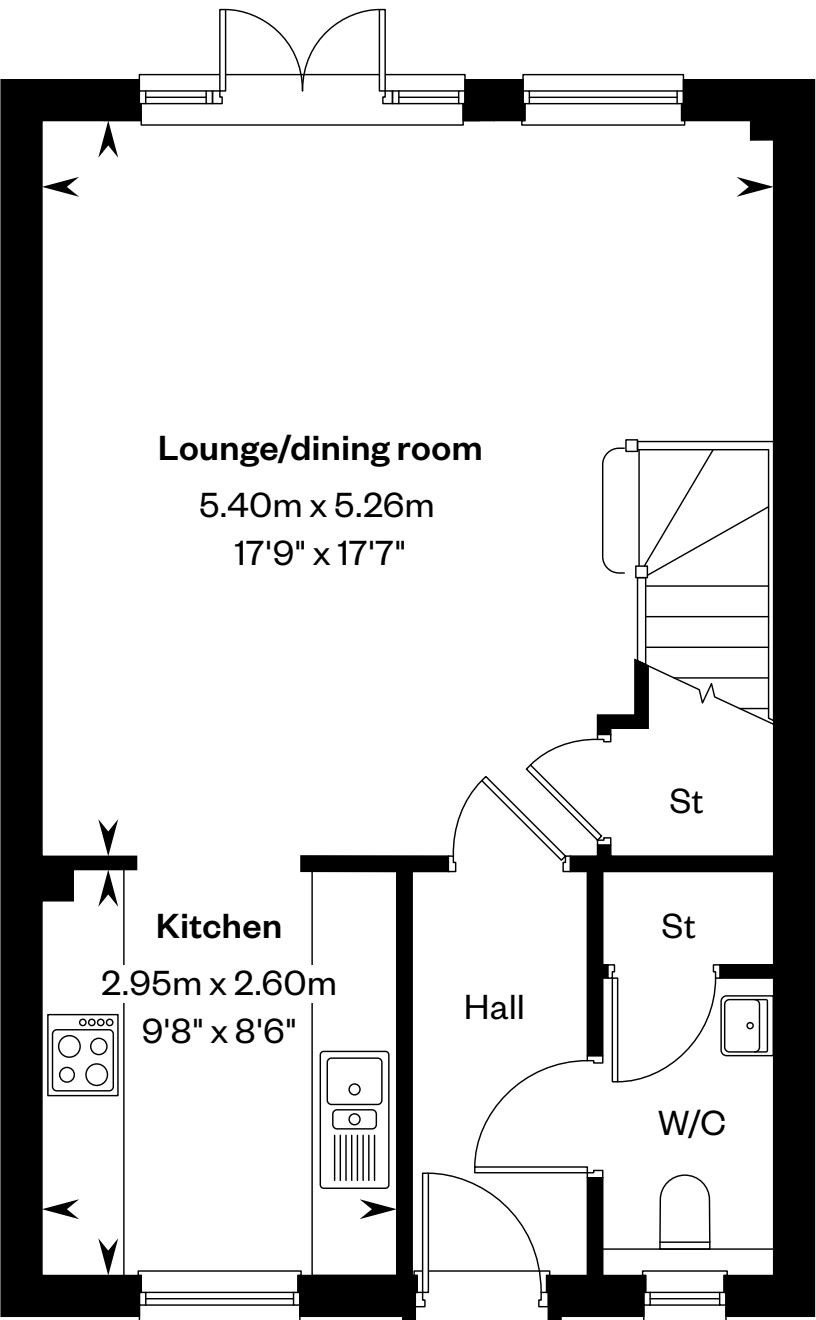
3 bedroom terraced or semi detached home

Plot 22 – as shown

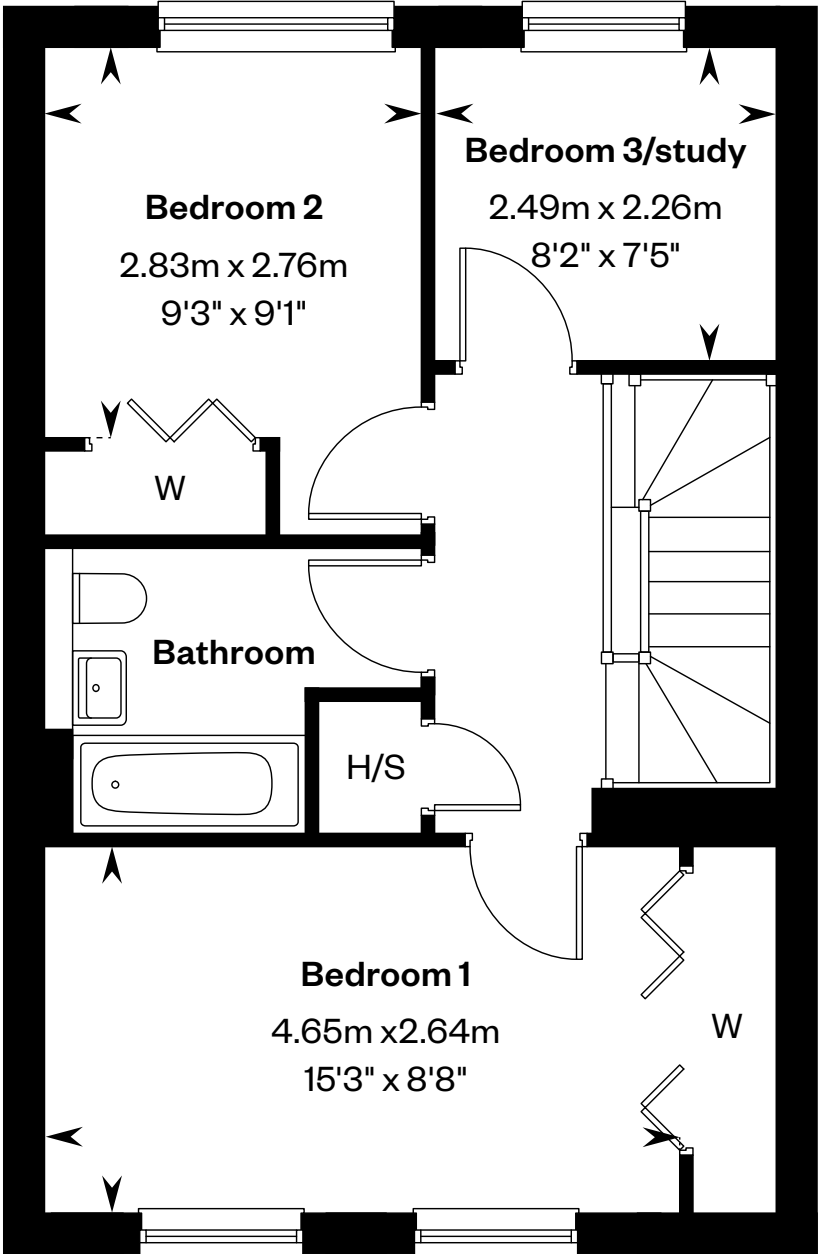
Plot 21 – handed



This is a Predicted Energy Assessment for properties that are incomplete. Once the property is completed, this rating will be updated and an official Energy Performance certificate will be created for the property.



Ground floor



First floor

H/S: Heating source cupboard. St: Store cupboard. W: Wardrobe.

IMPORTANT NOTICE TO CUSTOMERS: The Consumer Protection from Unfair Trading Regulations 2008. Cala Homes (West) Limited operates a policy of continual product development and the specifications outlined in this brochure are indicative only. The computer generated images and photographs do not necessarily represent the actual finishings/elevation or treatments, landscaping, furnishings and fittings at this development. Information contained is accurate at date of publication on 17.06.25. See the main brochure for the full Consumer Protection statement.



The Avon

3 bedroom terraced
or semi detached home

The Avon



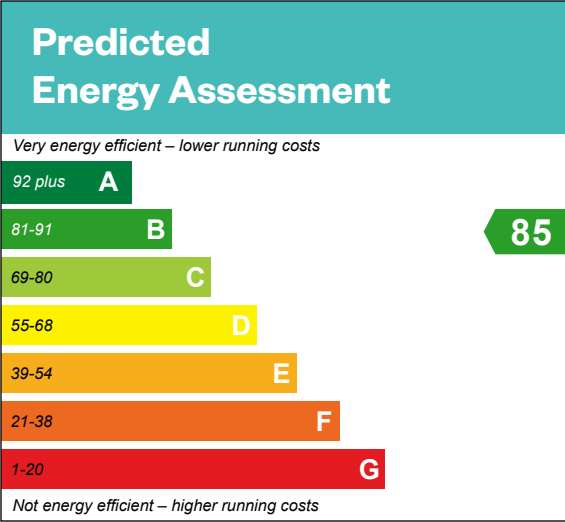
Computer generated image - The Avon

The Avon

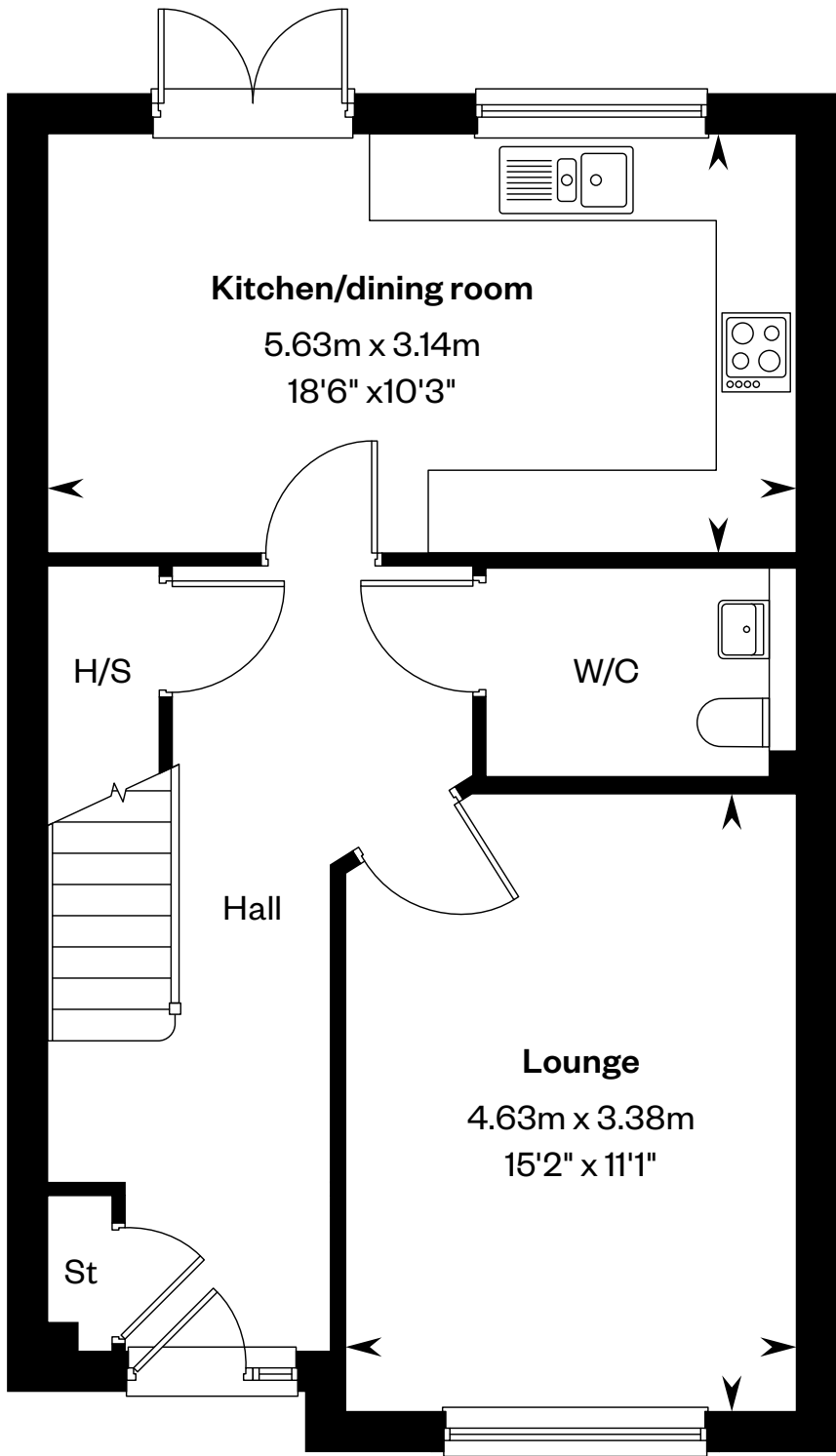
3 bedroom terraced or semi detached home

Plots 15 & 20 – as shown

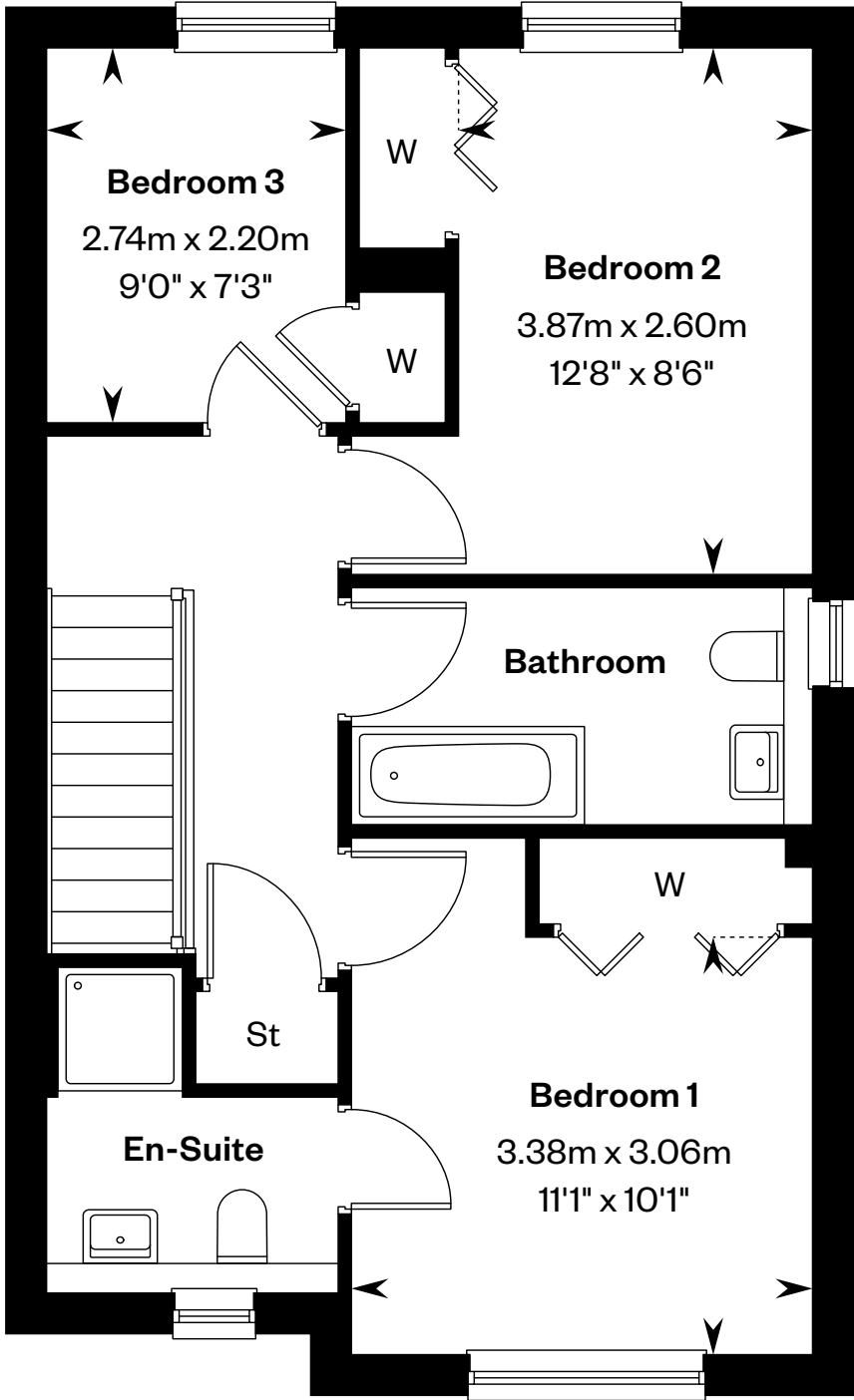
Plots 11 & 16 – handed



This is a Predicted Energy Assessment for properties that are incomplete. Once the property is completed, this rating will be updated and an official Energy Performance certificate will be created for the property.



Ground floor



First floor

H/S: Heating source cupboard. St: Store cupboard. W: Wardrobe.

IMPORTANT NOTICE TO CUSTOMERS: The Consumer Protection from Unfair Trading Regulations 2008. Cala Homes (West) Limited operates a policy of continual product development and the specifications outlined in this brochure are indicative only. The computer generated images and photographs do not necessarily represent the actual finishings/elevation or treatments, landscaping, furnishings and fittings at this development. Information contained is accurate at date of publication on 17.06.25. See the main brochure for the full Consumer Protection statement.



The Bowden

3 bedroom mid terraced home



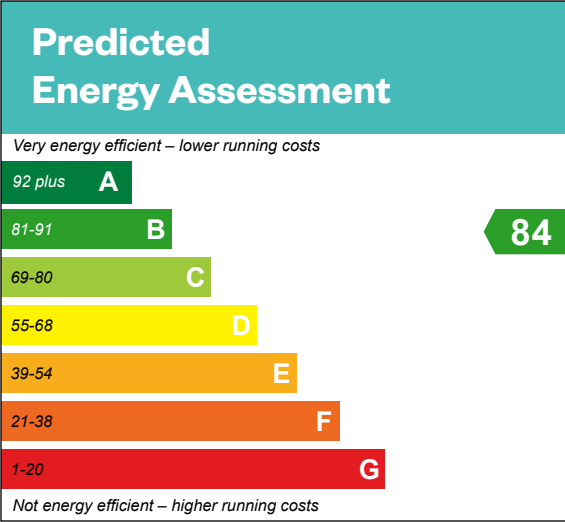
Computer generated image - The Bowden

The Bowden

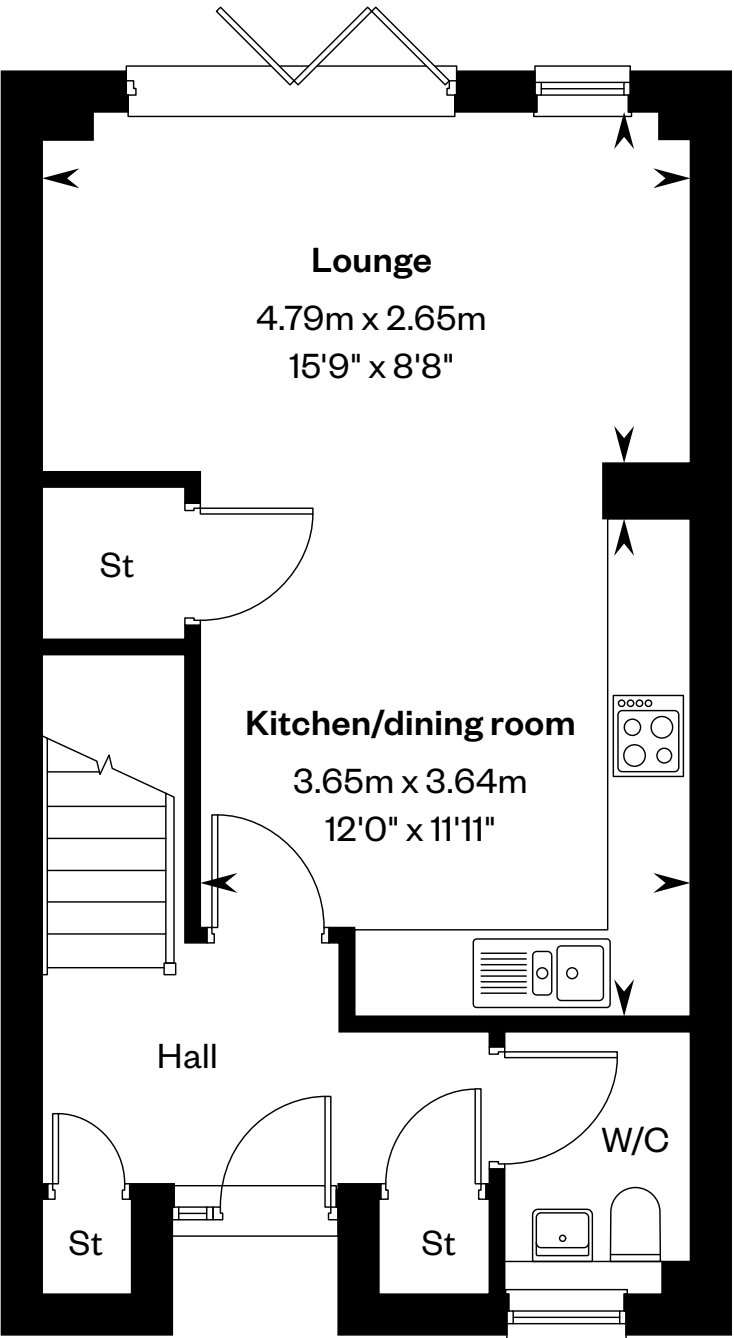
3 bedroom mid terraced home

Plot 6 – as shown

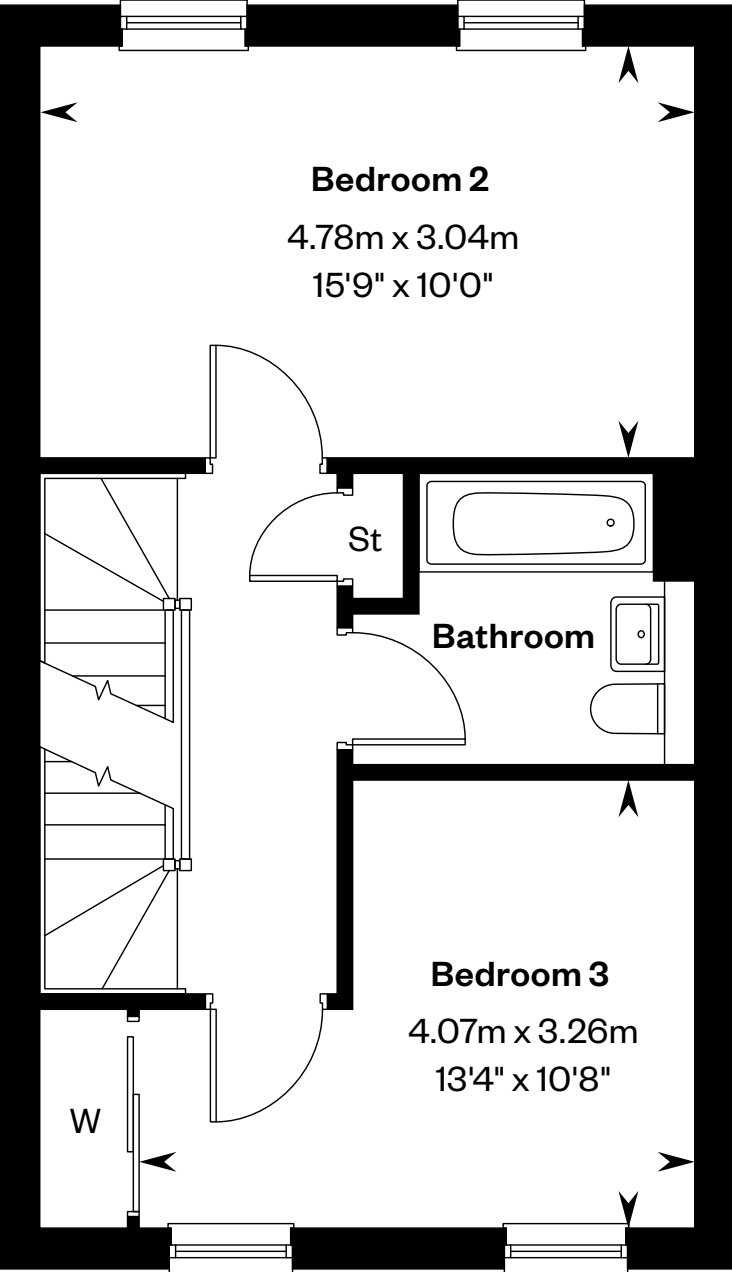
Plots 2, 5 & 9 – handed



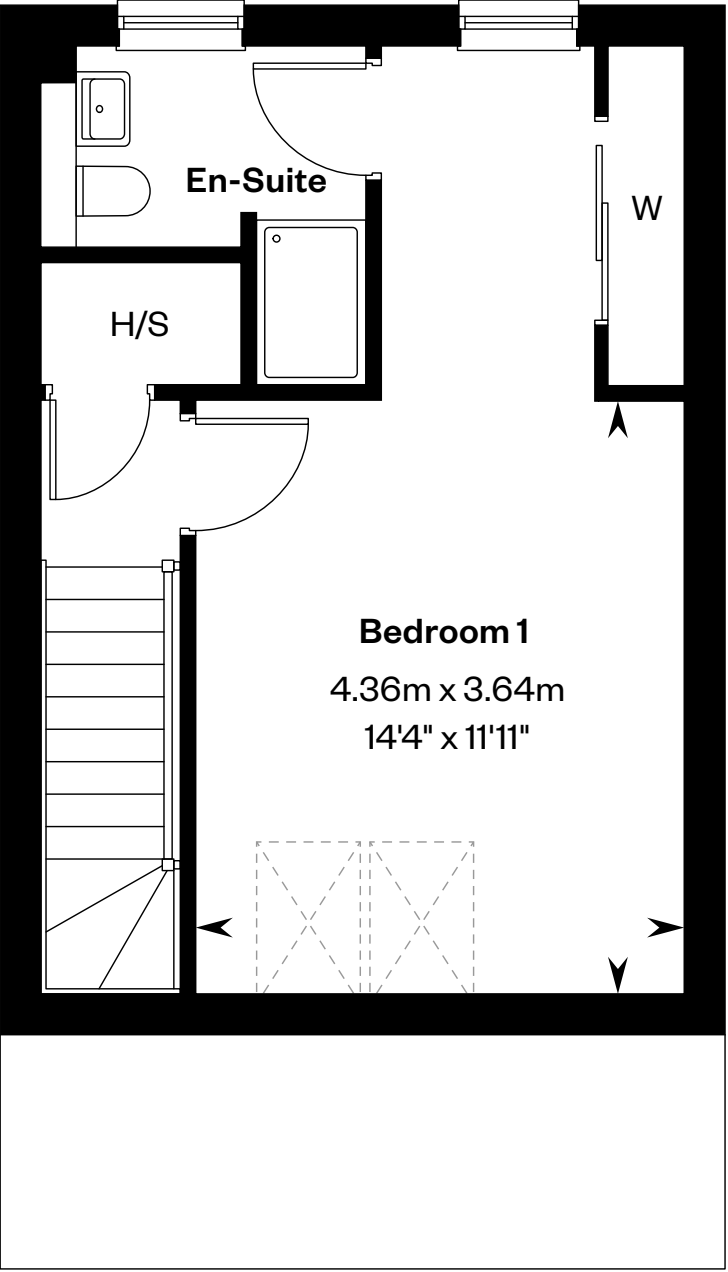
This is a Predicted Energy Assessment for properties that are incomplete. Once the property is completed, this rating will be updated and an official Energy Performance certificate will be created for the property.



Ground floor



First floor



Second floor

H/S: Heating source cupboard. St: Store cupboard. W: Wardrobe. : Roof light/velux window.

IMPORTANT NOTICE TO CUSTOMERS: The Consumer Protection from Unfair Trading Regulations 2008. Cala Homes (West) Limited operates a policy of continual product development and the specifications outlined in this brochure are indicative only. The computer generated images and photographs do not necessarily represent the actual finishings/elevation or treatments, landscaping, furnishings and fittings at this development. Information contained is accurate at date of publication on 17.06.25. See the main brochure for the full Consumer Protection statement.



The Colonsay

4 bedroom end terraced home



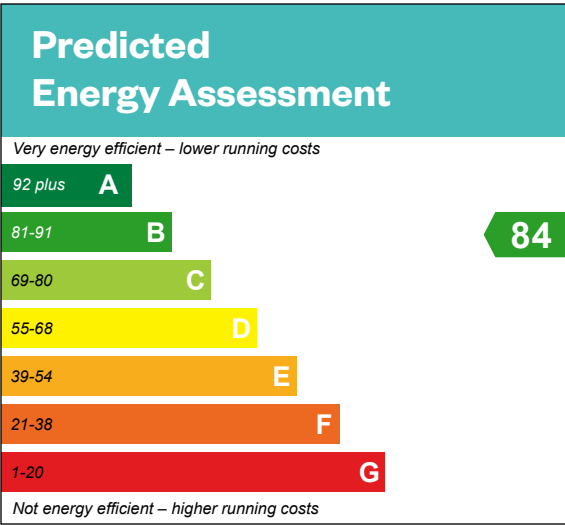
Computer generated image - The Colonsay

The Colonsay

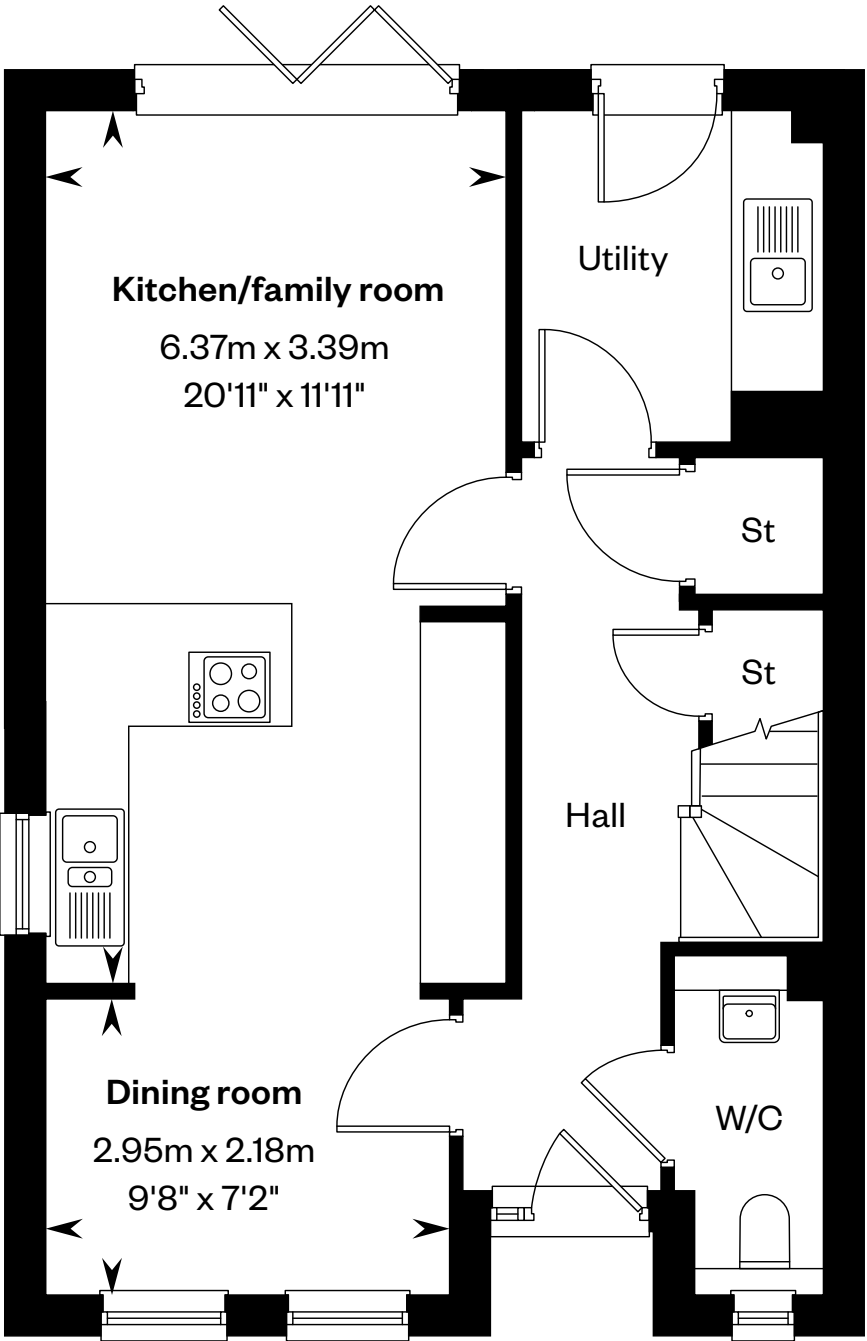
4 bedroom end terraced home

Plots 1, 4 & 8 – as shown

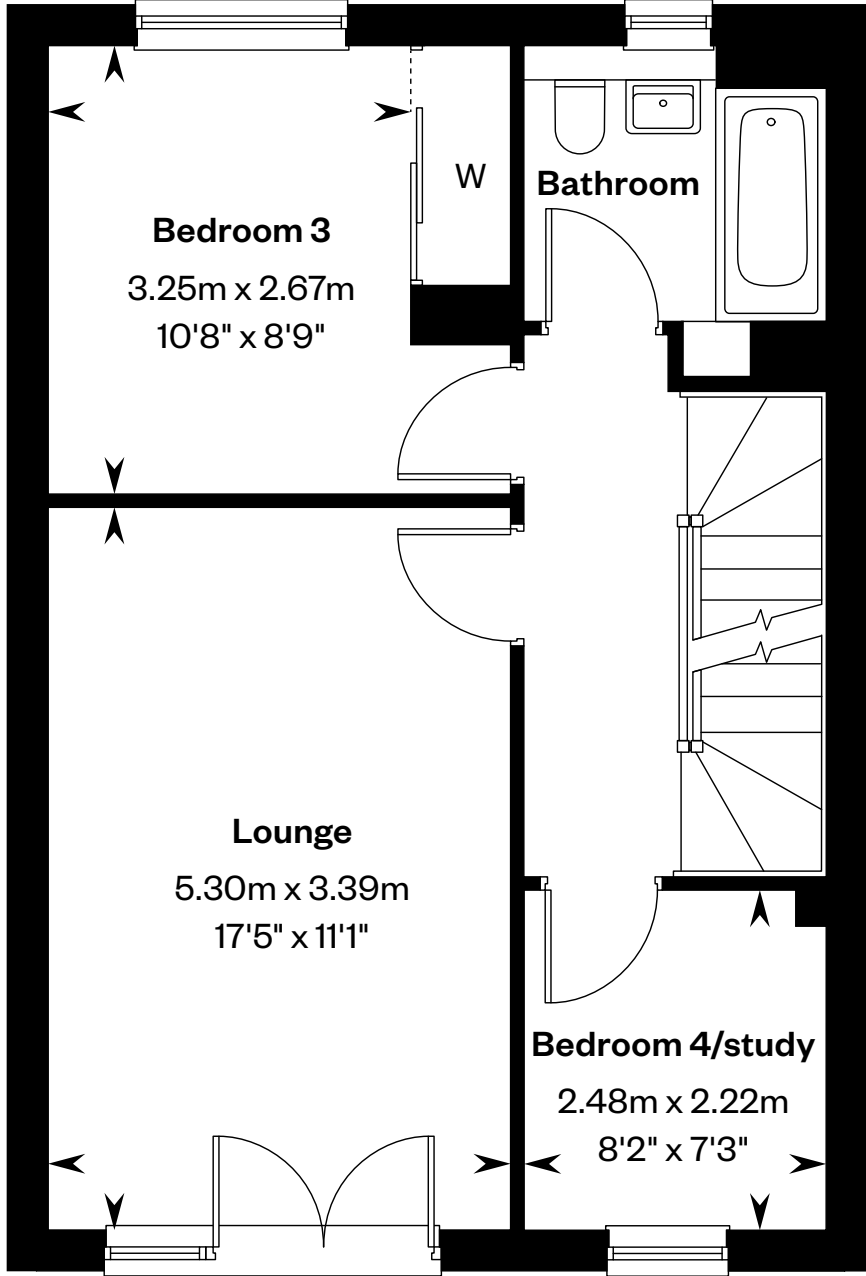
Plots 3, 7 & 10 – handed



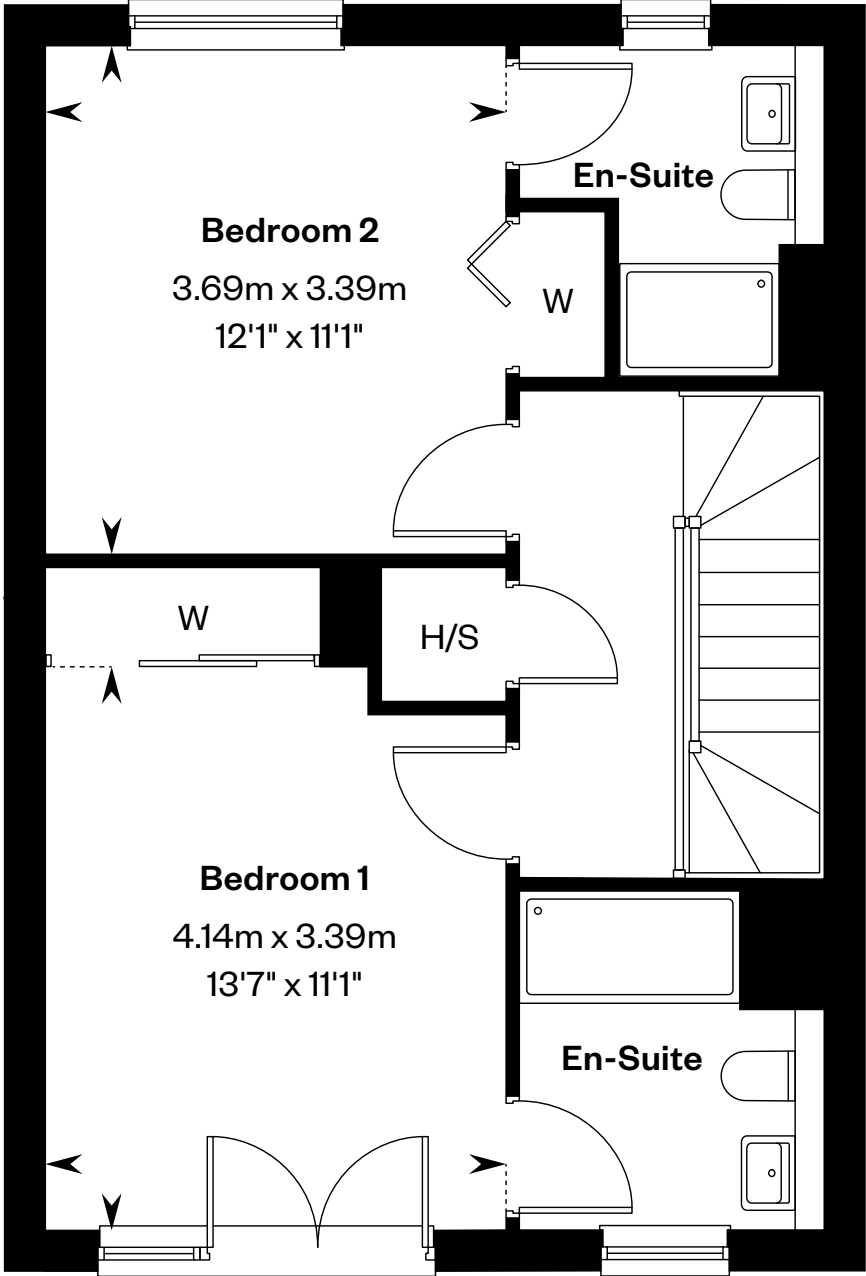
This is a Predicted Energy Assessment for properties that are incomplete. Once the property is completed, this rating will be updated and an official Energy Performance certificate will be created for the property.



Ground floor



First floor



Second floor

*Window configurations may vary. Please ask your Sales Consultant for further details.
H/S: Heating source cupboard. St: Store cupboard. W: Wardrobe.

IMPORTANT NOTICE TO CUSTOMERS: The Consumer Protection from Unfair Trading Regulations 2008. Cala Homes (West) Limited operates a policy of continual product development and the specifications outlined in this brochure are indicative only. The computer generated images and photographs do not necessarily represent the actual finishings/elevation or treatments, landscaping, furnishings and fittings at this development. Information contained is accurate at date of publication on 17.06.25. See the main brochure for the full Consumer Protection statement.



The Colville

4 bedroom detached home with study

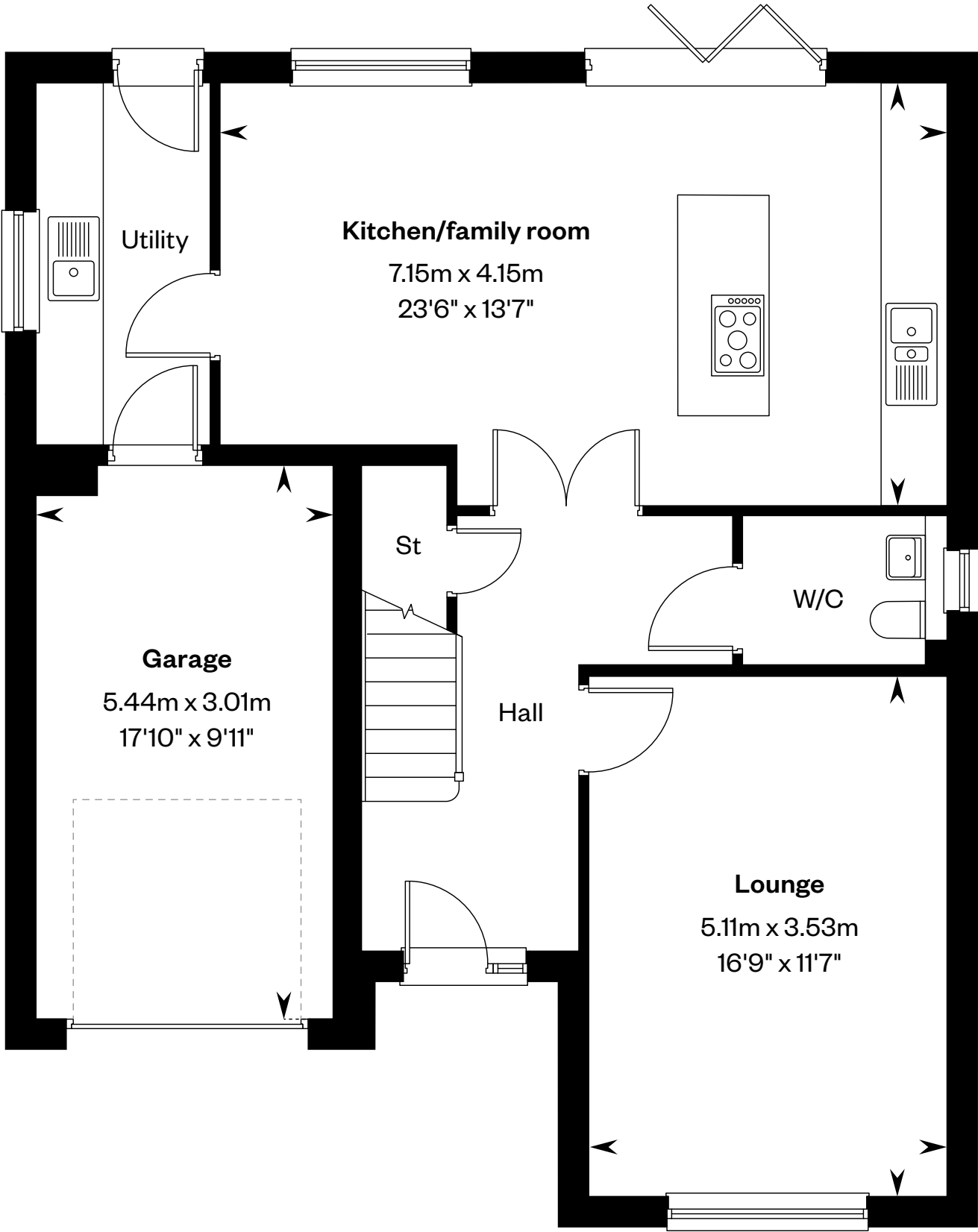
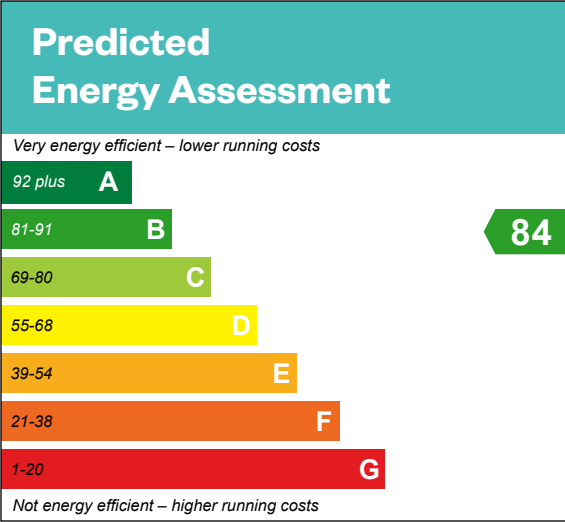


The Colville

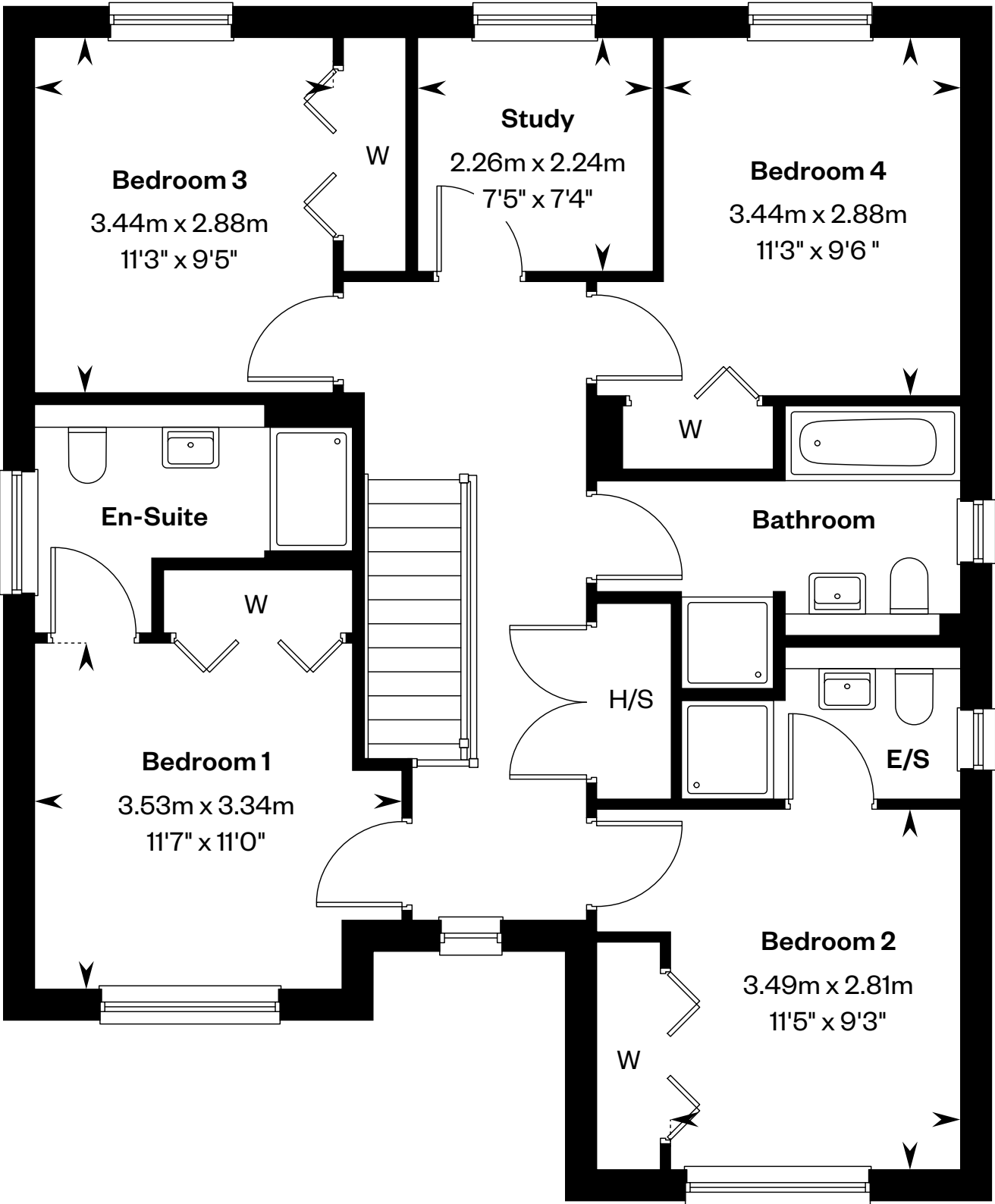
4 bedroom detached home with study

Plot 39 – as shown

Plots 25, 35, 40 & 56 – handed



Ground floor



First floor

E/S: En-Suite. H/S: Heating source cupboard. St: Store cupboard. W: Wardrobe.

IMPORTANT NOTICE TO CUSTOMERS: The Consumer Protection from Unfair Trading Regulations 2008. Cala Homes (West) Limited operates a policy of continual product development and the specifications outlined in this brochure are indicative only. The computer generated images and photographs do not necessarily represent the actual finishings/elevation or treatments, landscaping, furnishings and fittings at this development. Information contained is accurate at date of publication on 17.06.25. See the main brochure for the full Consumer Protection statement.



The Darroch

5 bedroom detached home

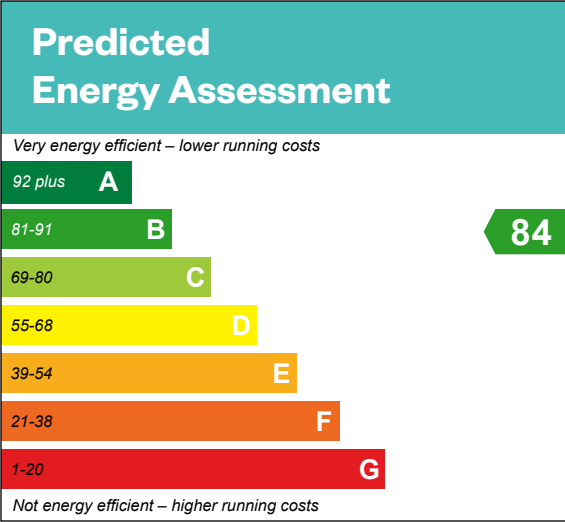


The Darroch

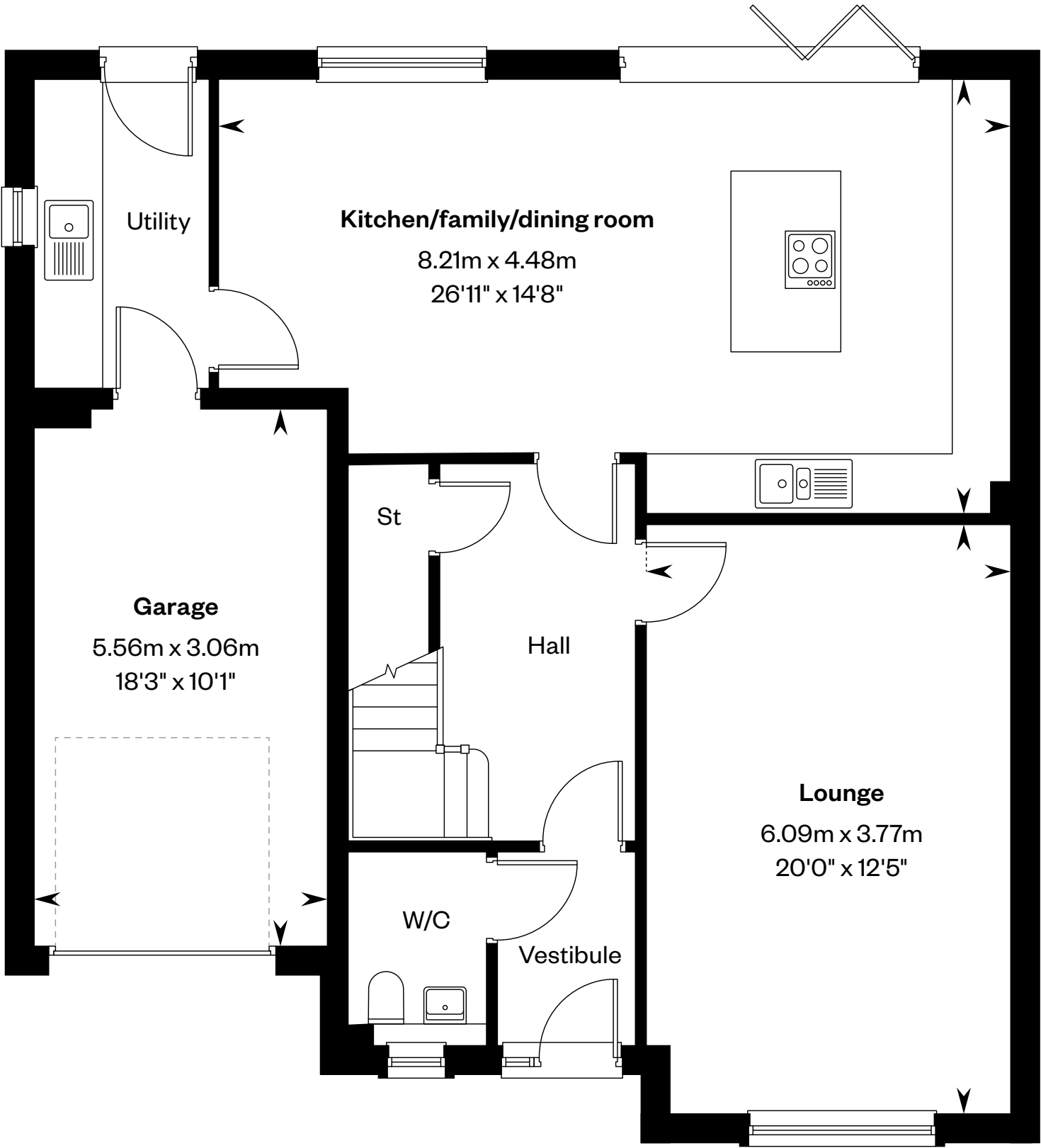
5 bedroom detached home

Plots 26 & 42 – as shown

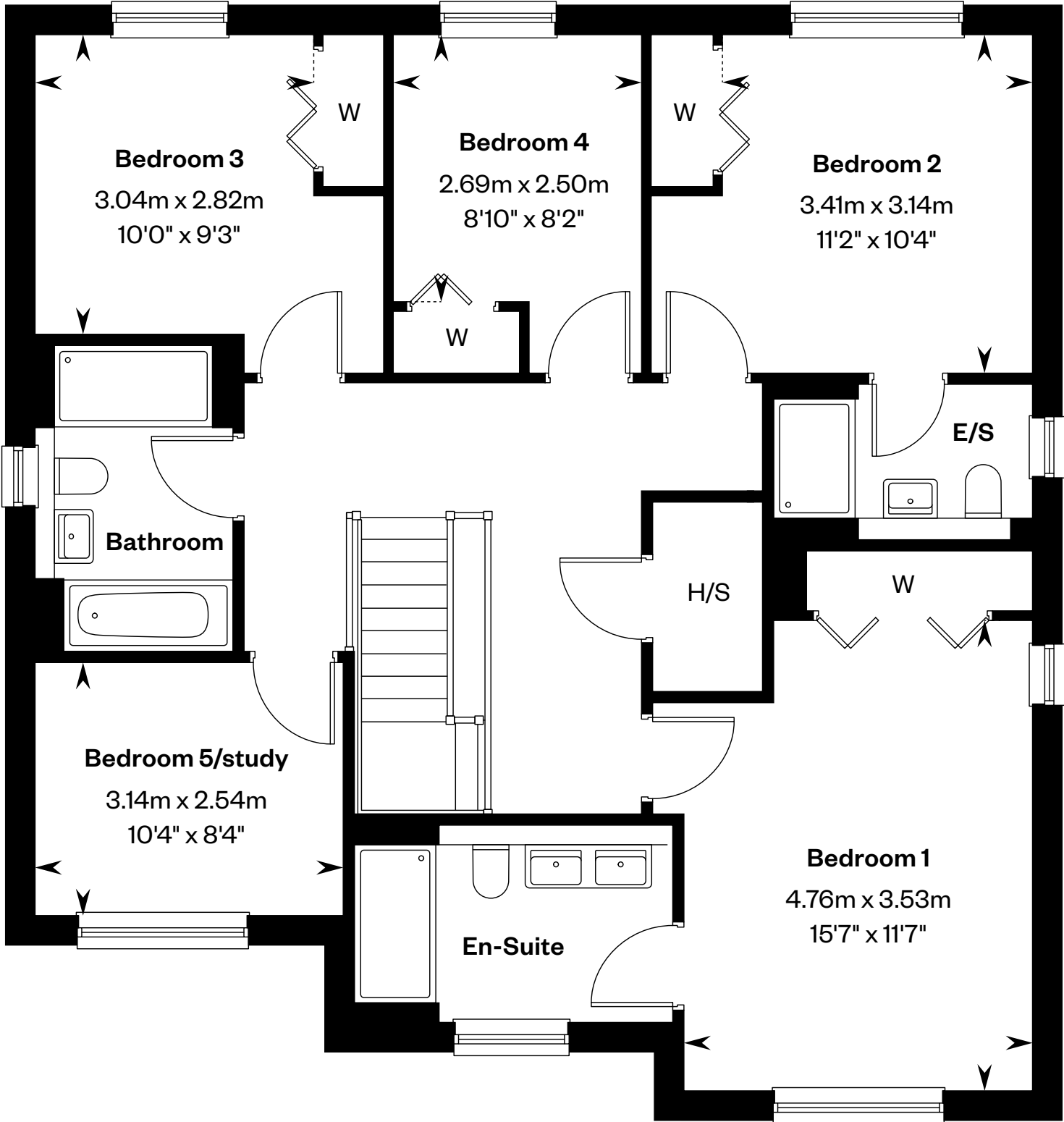
Plots 38, 54 & 58 – handed



This is a Predicted Energy Assessment for properties that are incomplete. Once the property is completed, this rating will be updated and an official Energy Performance certificate will be created for the property.



Ground floor



First floor

E/S: En-Suite. H/S: Heating source cupboard. St: Store cupboard. W: Wardrobe.

IMPORTANT NOTICE TO CUSTOMERS: The Consumer Protection from Unfair Trading Regulations 2008. Cala Homes (West) Limited operates a policy of continual product development and the specifications outlined in this brochure are indicative only. The computer generated images and photographs do not necessarily represent the actual finishings/elevation or treatments, landscaping, furnishings and fittings at this development. Information contained is accurate at date of publication on 17.06.25. See the main brochure for the full Consumer Protection statement.



The Dewar FE

5 bedroom detached home



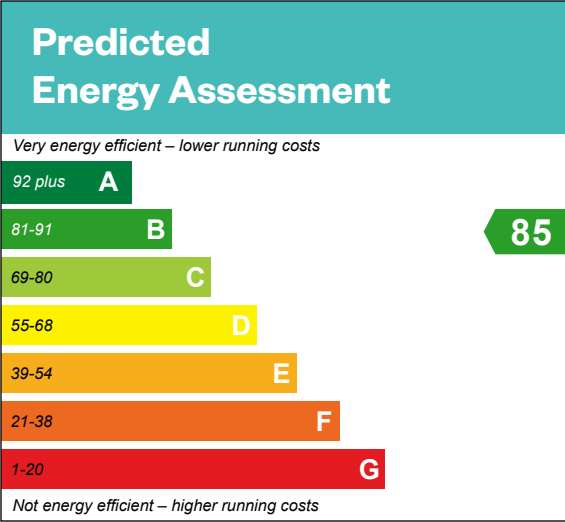
Computer generated image - The Dewar FE

The Dewar FE

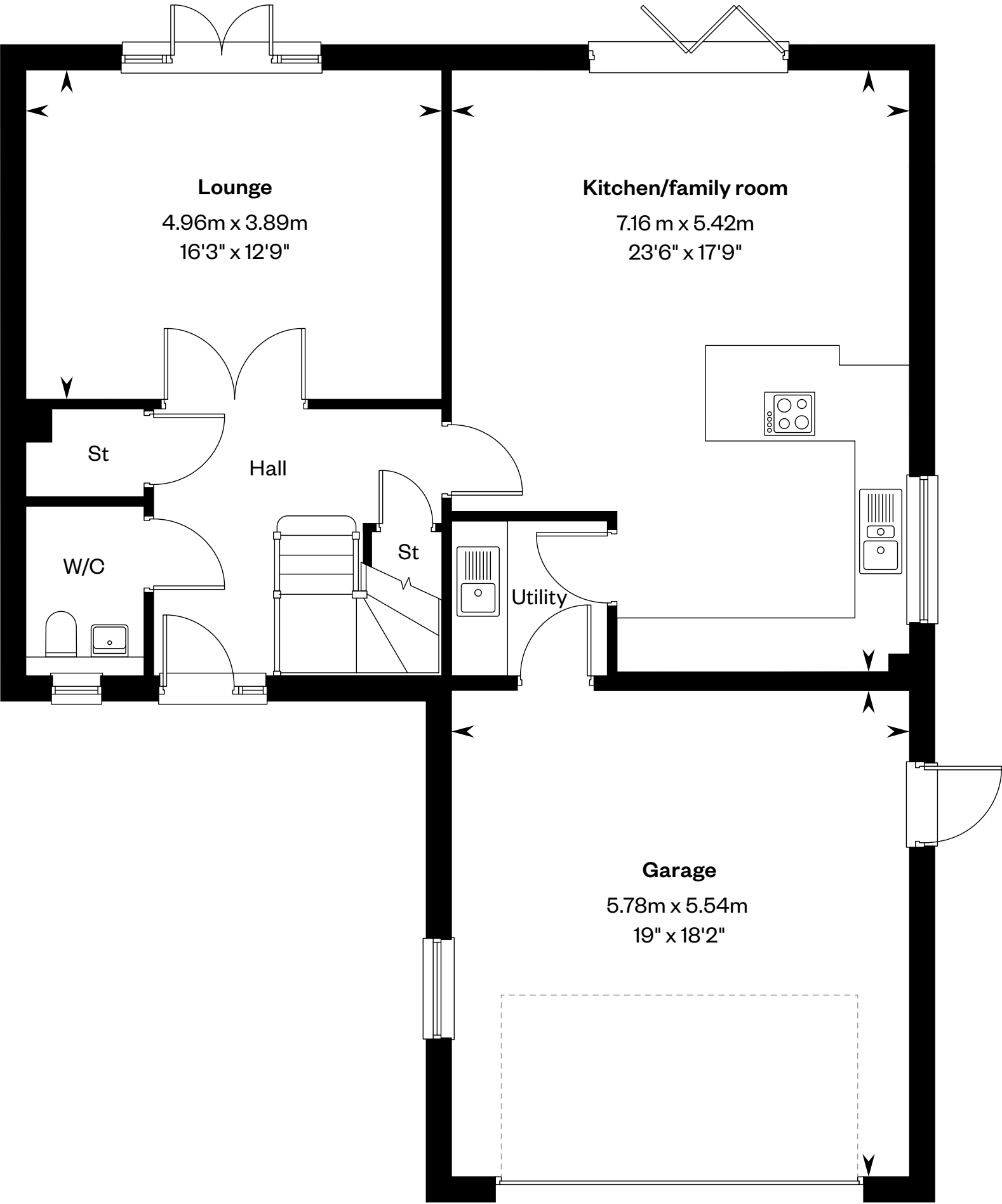
5 bedroom detached home

Plot 30 – as shown

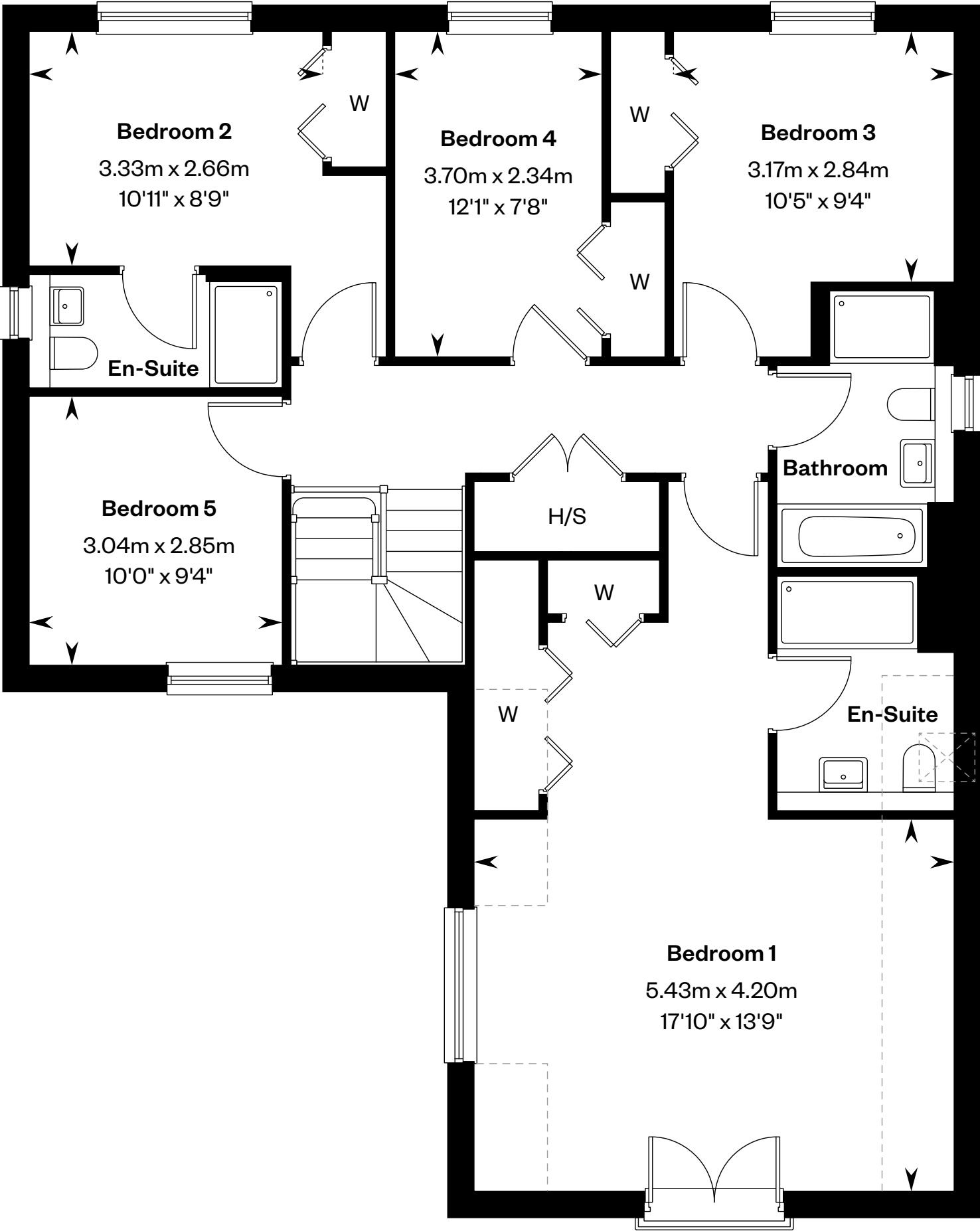
Plot 31 – handed



This is a Predicted Energy Assessment for properties that are incomplete. Once the property is completed, this rating will be updated and an official Energy Performance certificate will be created for the property.



Ground floor



First floor

H/S: Heating source cupboard. St: Store cupboard. W: Wardrobe. ----: Dotted lines denote reduced head height.

IMPORTANT NOTICE TO CUSTOMERS: The Consumer Protection from Unfair Trading Regulations 2008. Cala Homes (West) Limited operates a policy of continual product development and the specifications outlined in this brochure are indicative only. The computer generated images and photographs do not necessarily represent the actual finishings/elevation or treatments, landscaping, furnishings and fittings at this development. Information contained is accurate at date of publication on 17.06.25. See the main brochure for the full Consumer Protection statement.



The Dewar SE

5 bedroom detached home

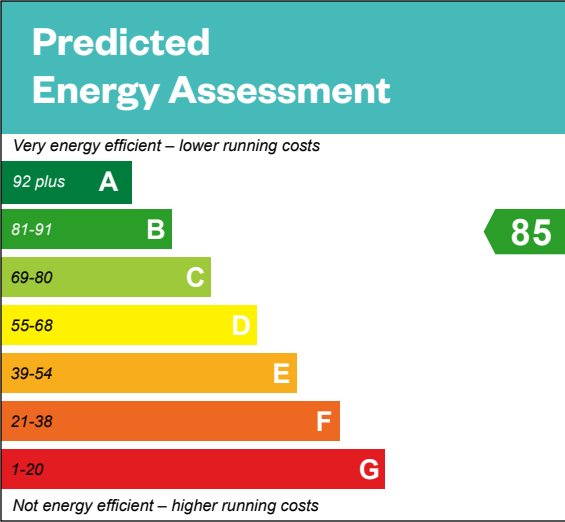


Computer generated image - The Dewar SE

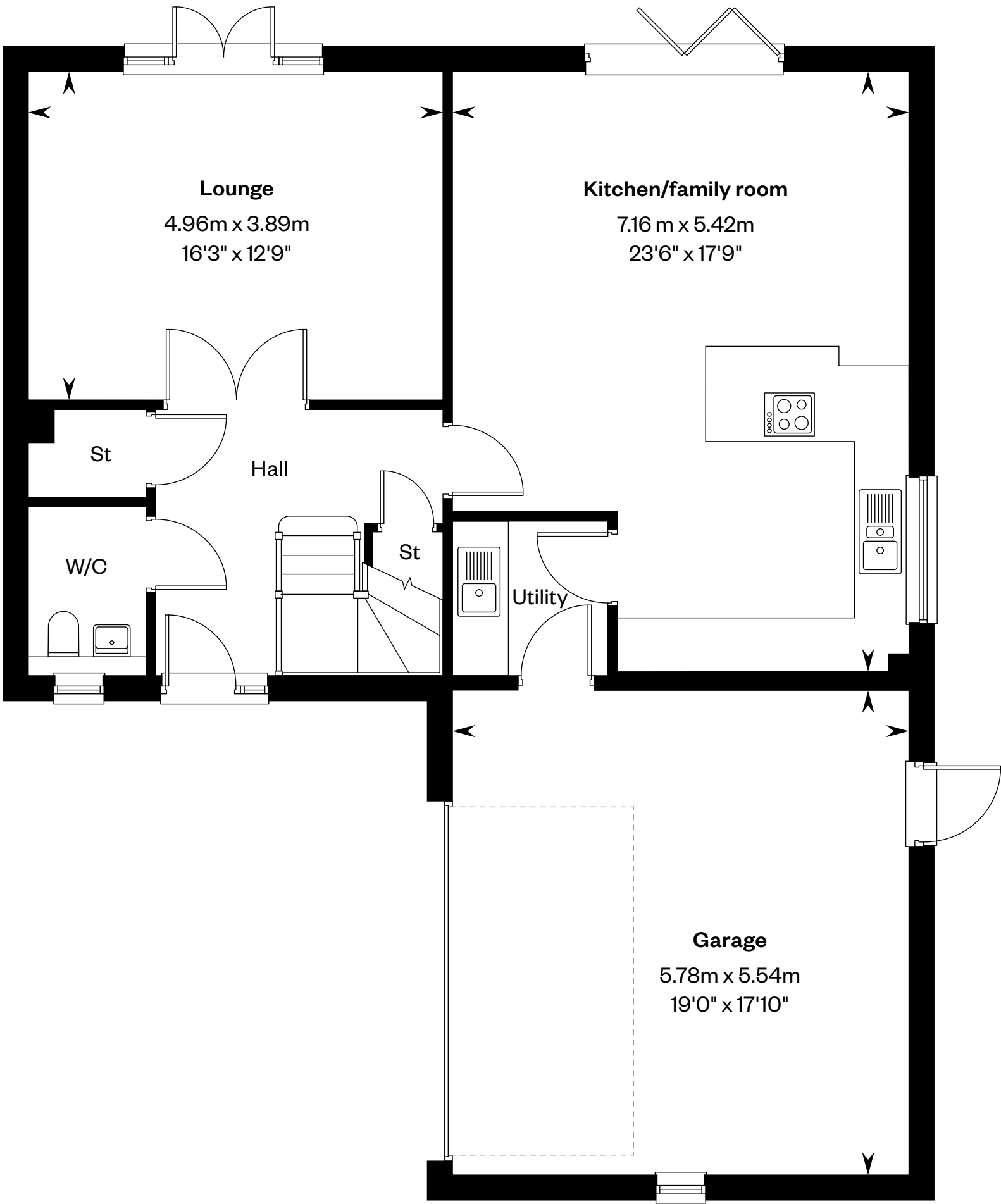
The Dewar SE

5 bedroom detached home

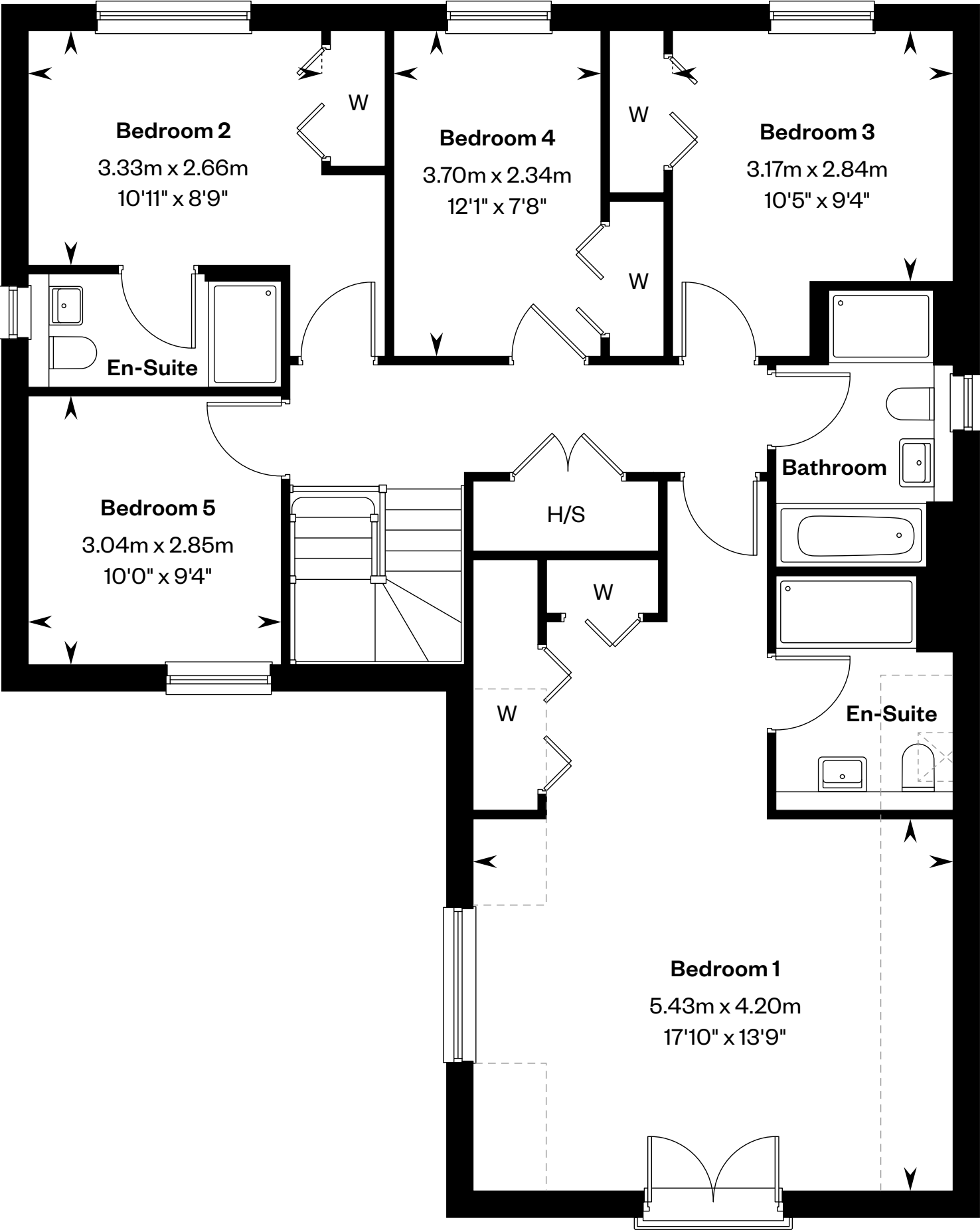
Plot 33 – as shown



This is a Predicted Energy Assessment for properties that are incomplete. Once the property is completed, this rating will be updated and an official Energy Performance certificate will be created for the property.



Ground floor



First floor

H/S: Heating source cupboard. St: Store cupboard. W: Wardrobe. - - - -: Dotted lines denote reduced head height.

IMPORTANT NOTICE TO CUSTOMERS: The Consumer Protection from Unfair Trading Regulations 2008. Cala Homes (West) Limited operates a policy of continual product development and the specifications outlined in this brochure are indicative only. The computer generated images and photographs do not necessarily represent the actual finishings/elevation or treatments, landscaping, furnishings and fittings at this development. Information contained is accurate at date of publication on 17.06.25. See the main brochure for the full Consumer Protection statement.



The Evan

5 bedroom detached home with study



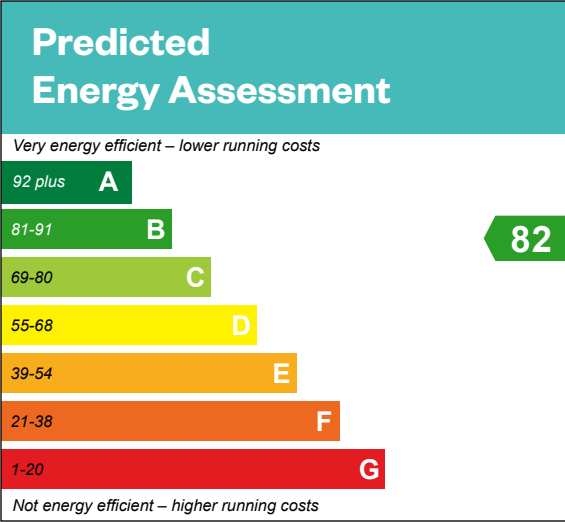
Computer generated image - The Evan

The Evan

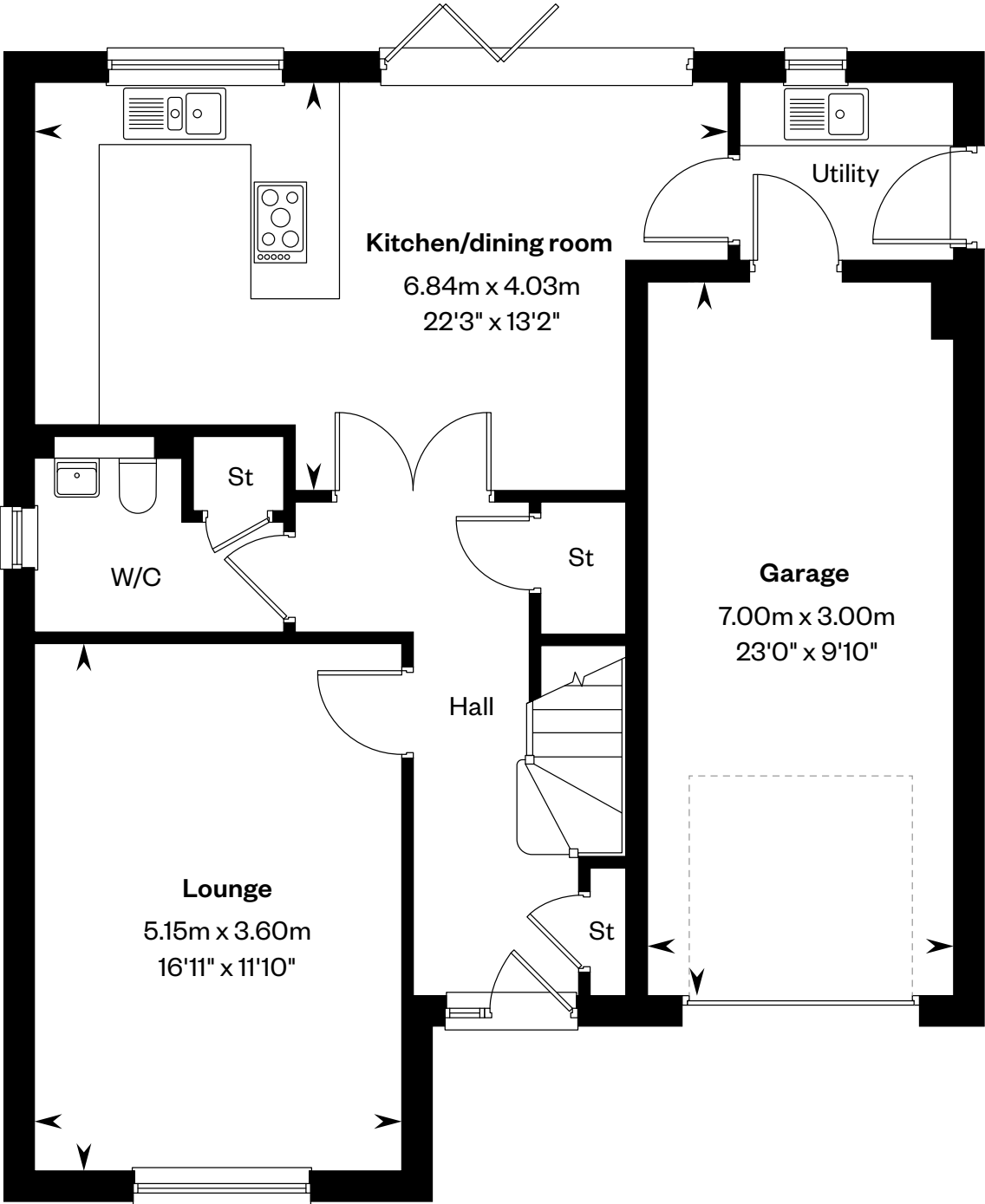
5 bedroom detached home with study

Plot 37 – as shown

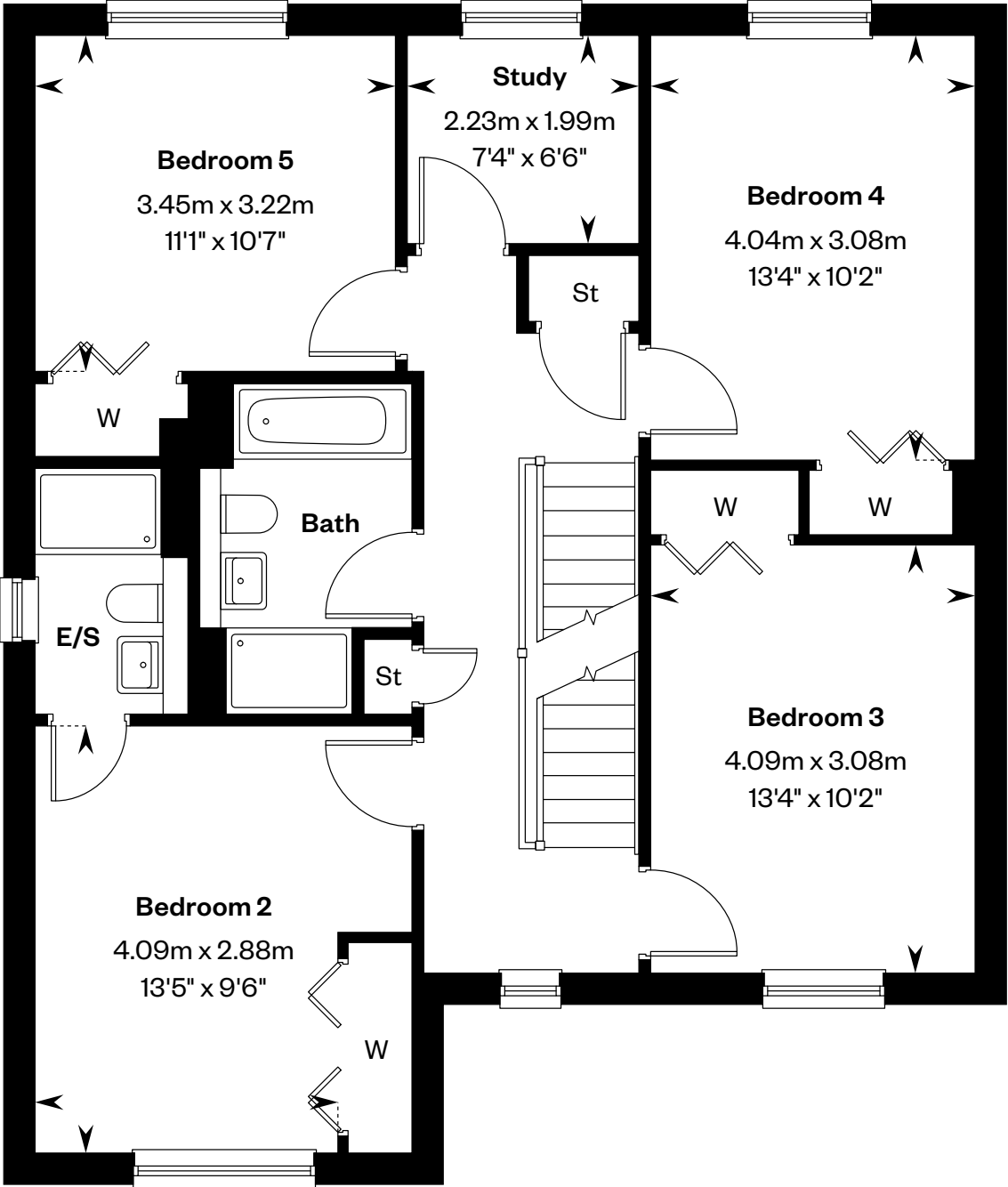
Plots 41, 55 & 59 – handed



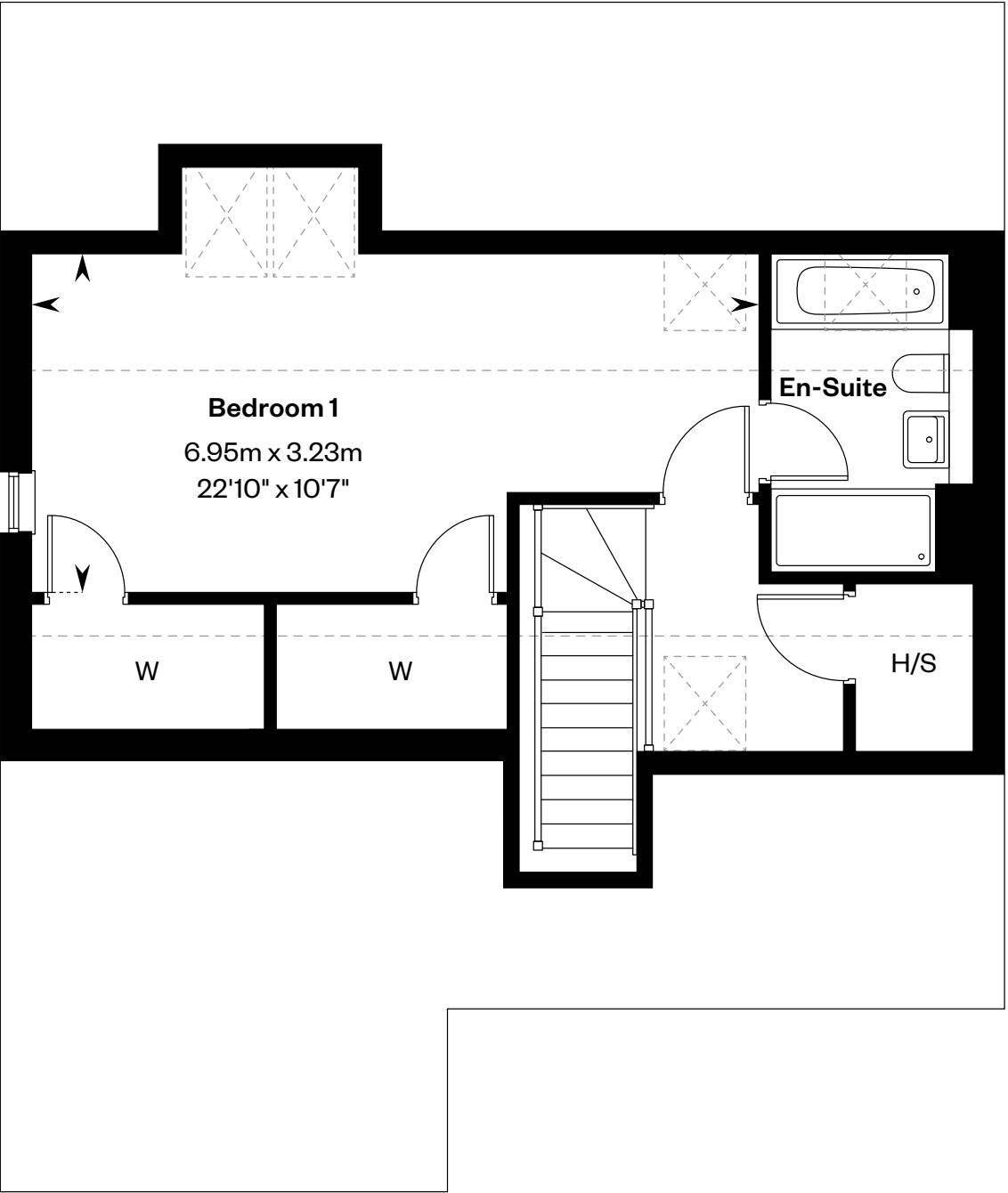
This is a Predicted Energy Assessment for properties that are incomplete. Once the property is completed, this rating will be updated and an official Energy Performance certificate will be created for the property.



Ground floor



First floor



Second floor

E/S: En-Suite. H/S: Heating source cupboard. St: Store cupboard. W: Wardrobe. : Roof light/velux window. - - - -: Dotted lines denote reduced head height.

IMPORTANT NOTIOE TO CUSTOMERS: The Consumer Protection from Unfair Trading Regulations 2008. Cala Homes (West) Limited operates a policy of continual product development and the specifications outlined in this brochure are indicative only. The computer generated images and photographs do not necessarily represent the actual finishings/elevation or treatments, landscaping, furnishings and fittings at this development. Information contained is accurate at date of publication on 17.06.25. See the main brochure for the full Consumer Protection statement.



The Garvie

5 bedroom detached home



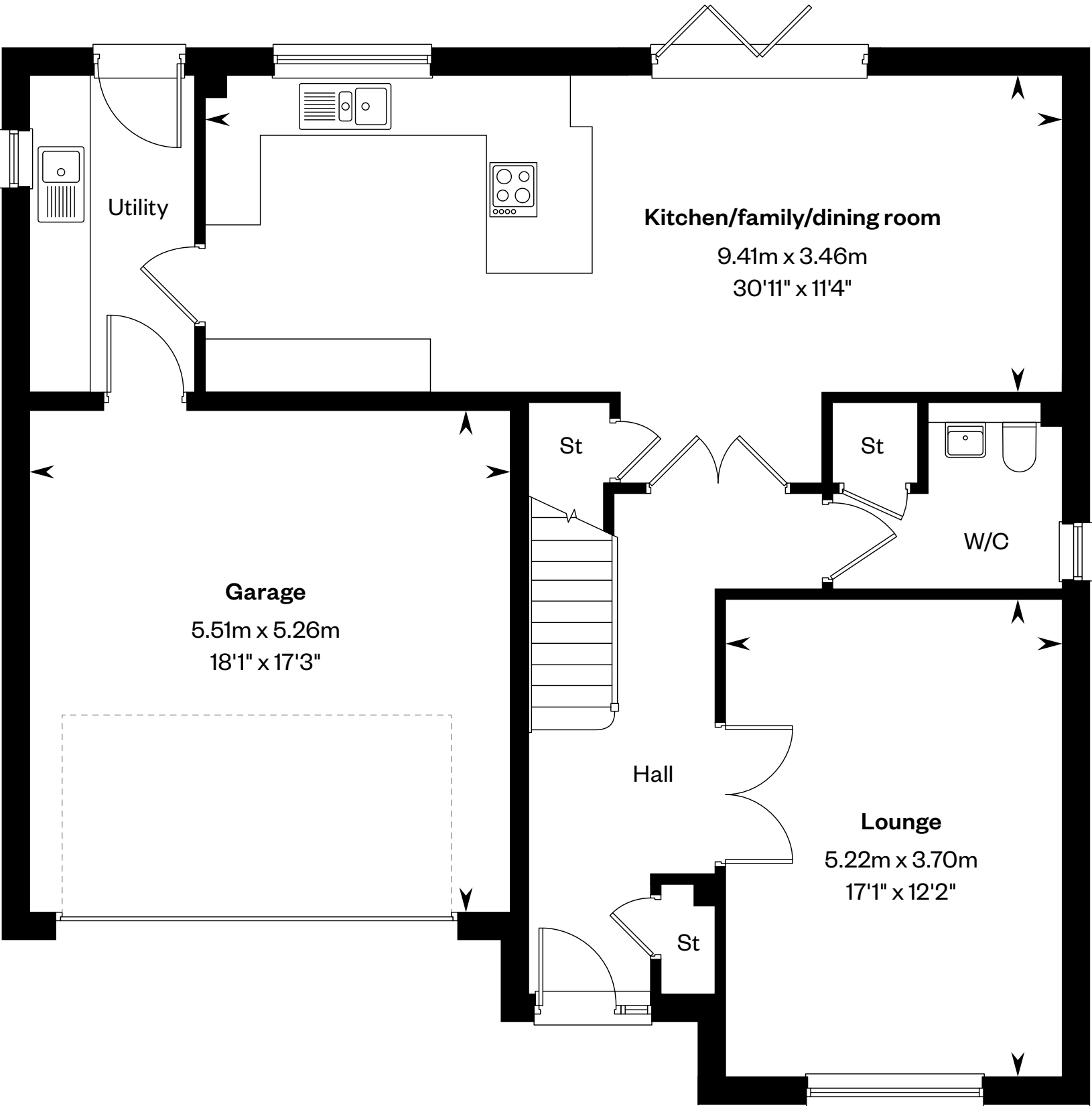
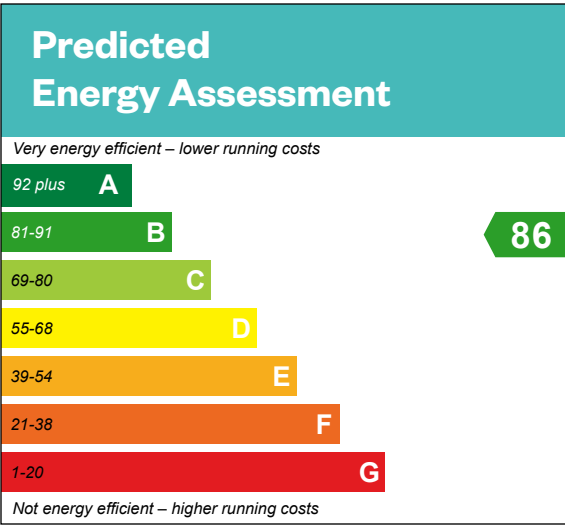
Computer generated image - The Garvie

The Garvie

5 bedroom detached home

Plot 45– as shown

Plots 28, 36, 49 & 57 – handed



Ground floor



First floor

H/S: Heating source cupboard. St: Store cupboard. W: Wardrobe. -----: Dotted lines denote reduced head height.

IMPORTANT NOTICE TO CUSTOMERS: The Consumer Protection from Unfair Trading Regulations 2008. Cala Homes (West) Limited operates a policy of continual product development and the specifications outlined in this brochure are indicative only. The computer generated images and photographs do not necessarily represent the actual finishings/elevation or treatments, landscaping, furnishings and fittings at this development. Information contained is accurate at date of publication on 17.06.25. See the main brochure for the full Consumer Protection statement.



The Kennedy

5 bedroom detached home



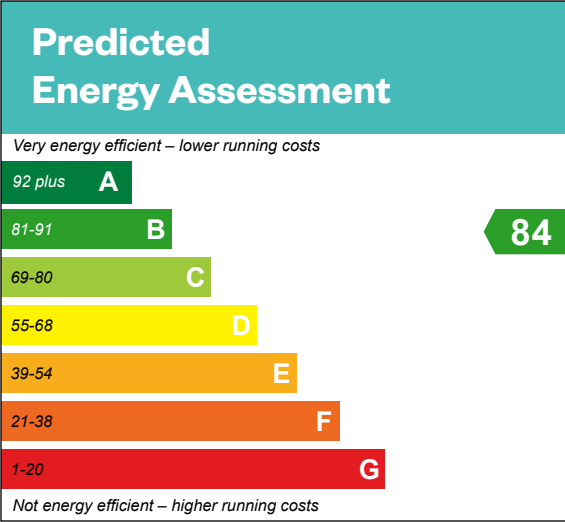
Computer generated image - The Kennedy

The Kennedy

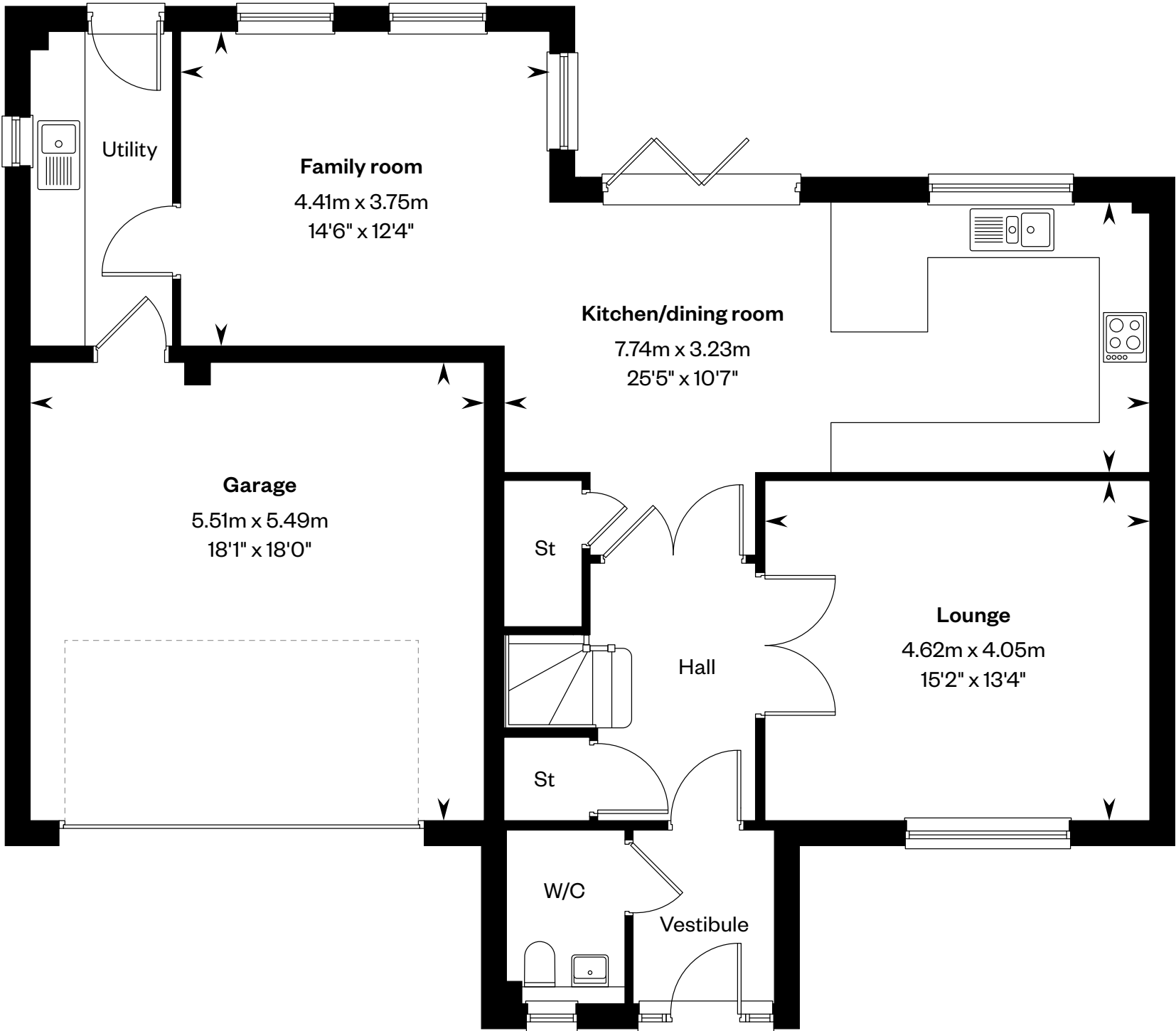
5 bedroom detached home

Plots 32, 43 & 51 – as shown

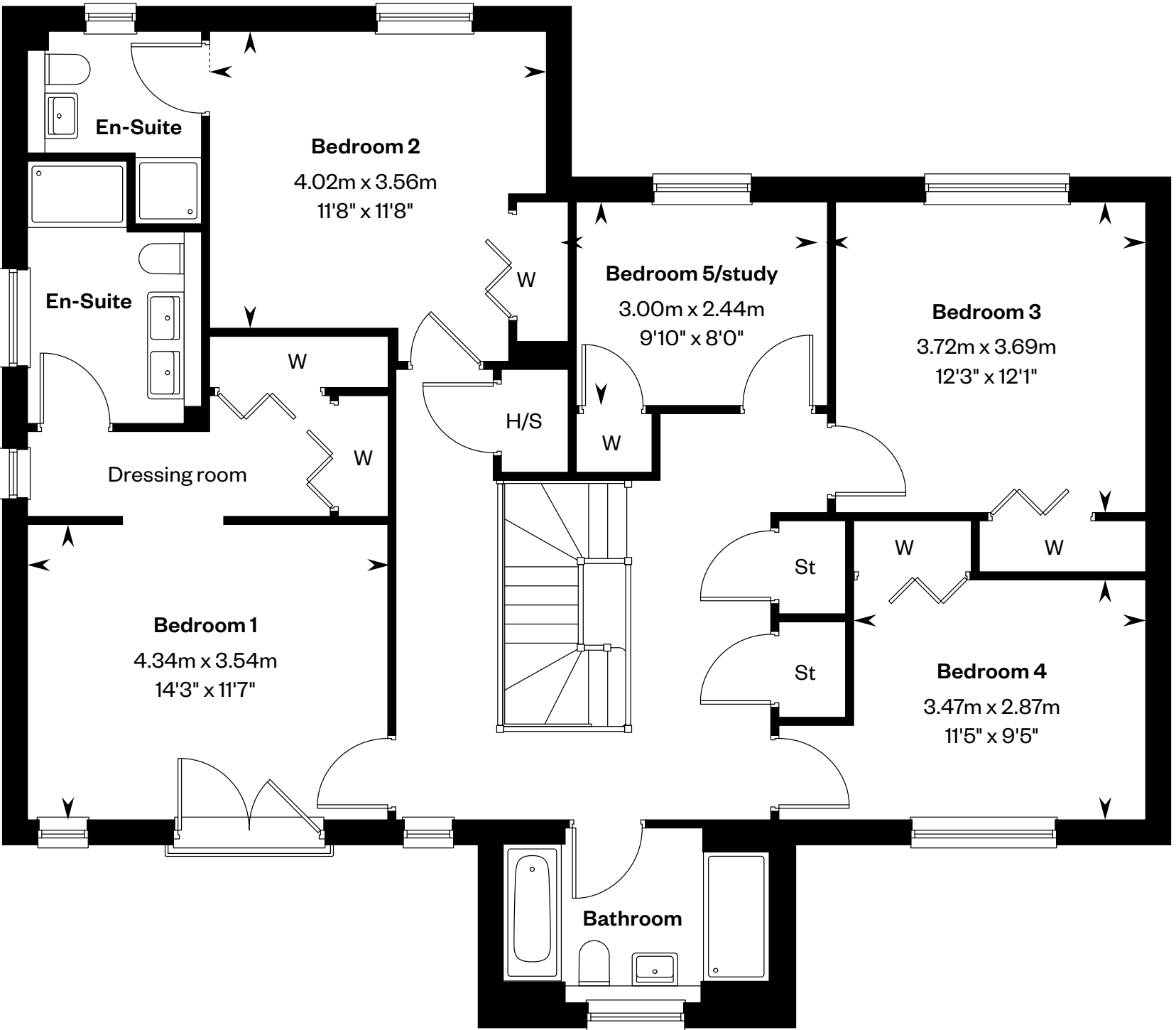
Plot 34 – handed



This is a Predicted Energy Assessment for properties that are incomplete. Once the property is completed, this rating will be updated and an official Energy Performance certificate will be created for the property.



Ground floor



First floor

H/S: Heating source cupboard. St: Store cupboard. W: Wardrobe..

IMPORTANT NOTIOE TO CUSTOMERS: The Consumer Protection from Unfair Trading Regulations 2008. Cala Homes (West) Limited operates a policy of continual product development and the specifications outlined in this brochure are indicative only. The computer generated images and photographs do not necessarily represent the actual finishings/elevation or treatments, landscaping, furnishings and fittings at this development. Information contained is accurate at date of publication on 17.06.25. See the main brochure for the full Consumer Protection statement.



The Lewis

5 bedroom detached home

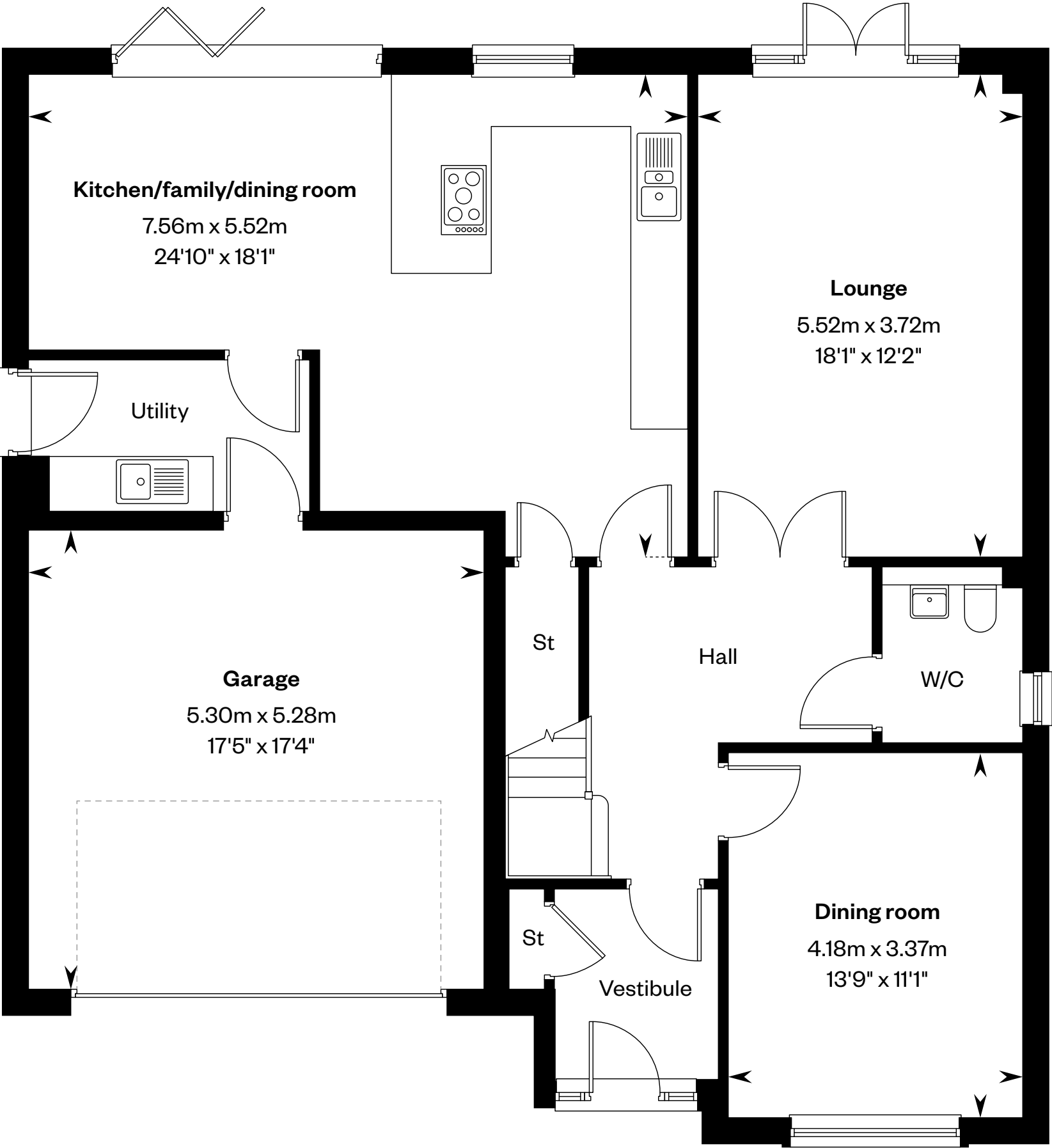
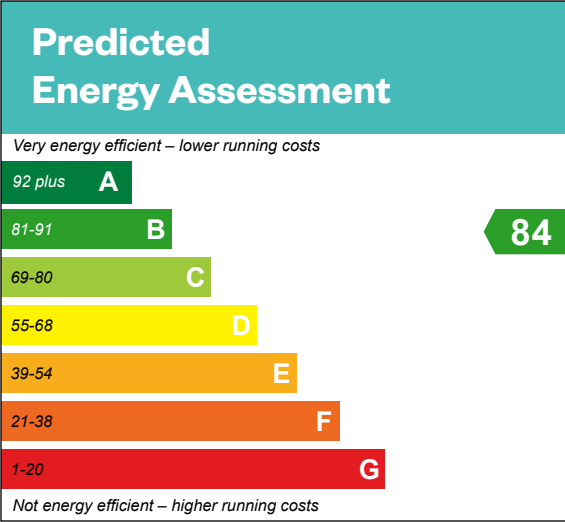


The Lewis

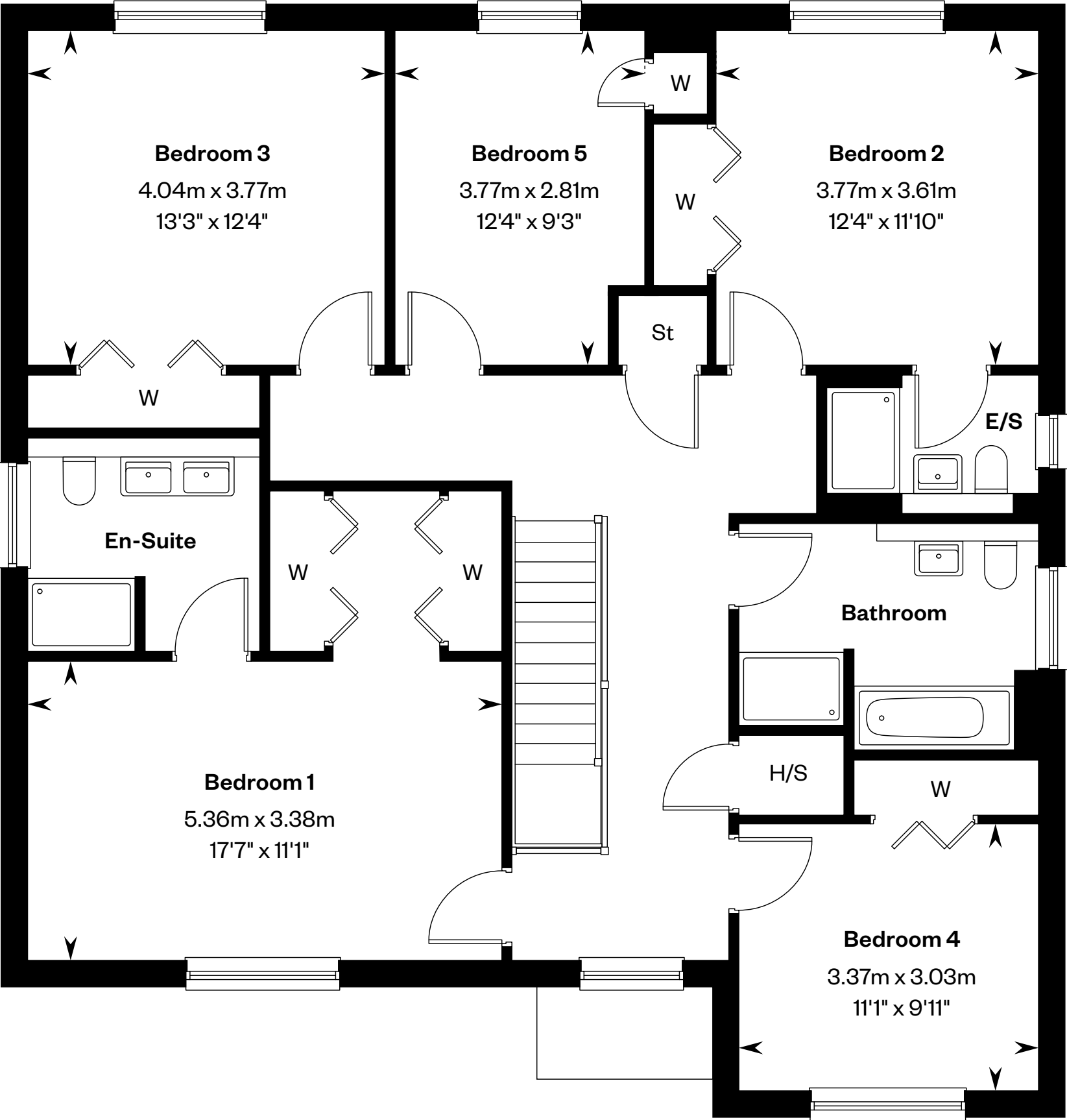
5 bedroom detached home

Plots 27, 48 & 50 – as shown

Plots 29 & 47 – handed



Ground floor



First floor

E/S: En-Suite. H/S: Heating source cupboard. St: Store cupboard. W: Wardrobe.

IMPORTANT NOTICE TO CUSTOMERS: The Consumer Protection from Unfair Trading Regulations 2008. Cala Homes (West) Limited operates a policy of continual product development and the specifications outlined in this brochure are indicative only. The computer generated images and photographs do not necessarily represent the actual finishings/elevation or treatments, landscaping, furnishings and fittings at this development. Information contained is accurate at date of publication on 17.06.25. See the main brochure for the full Consumer Protection statement.



The Logan

5 bedroom detached home



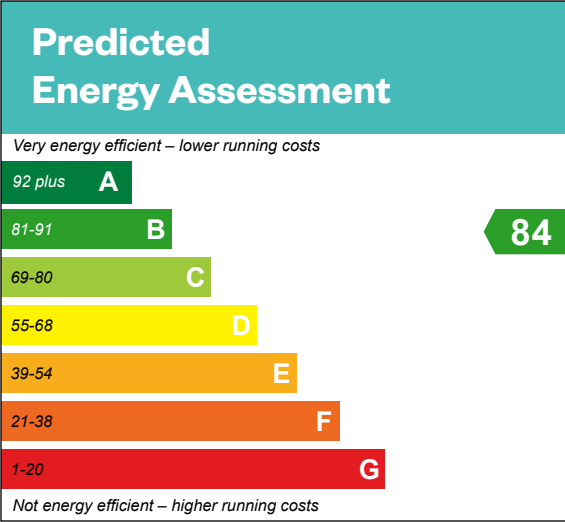
Computer generated image - The Logan

The Logan

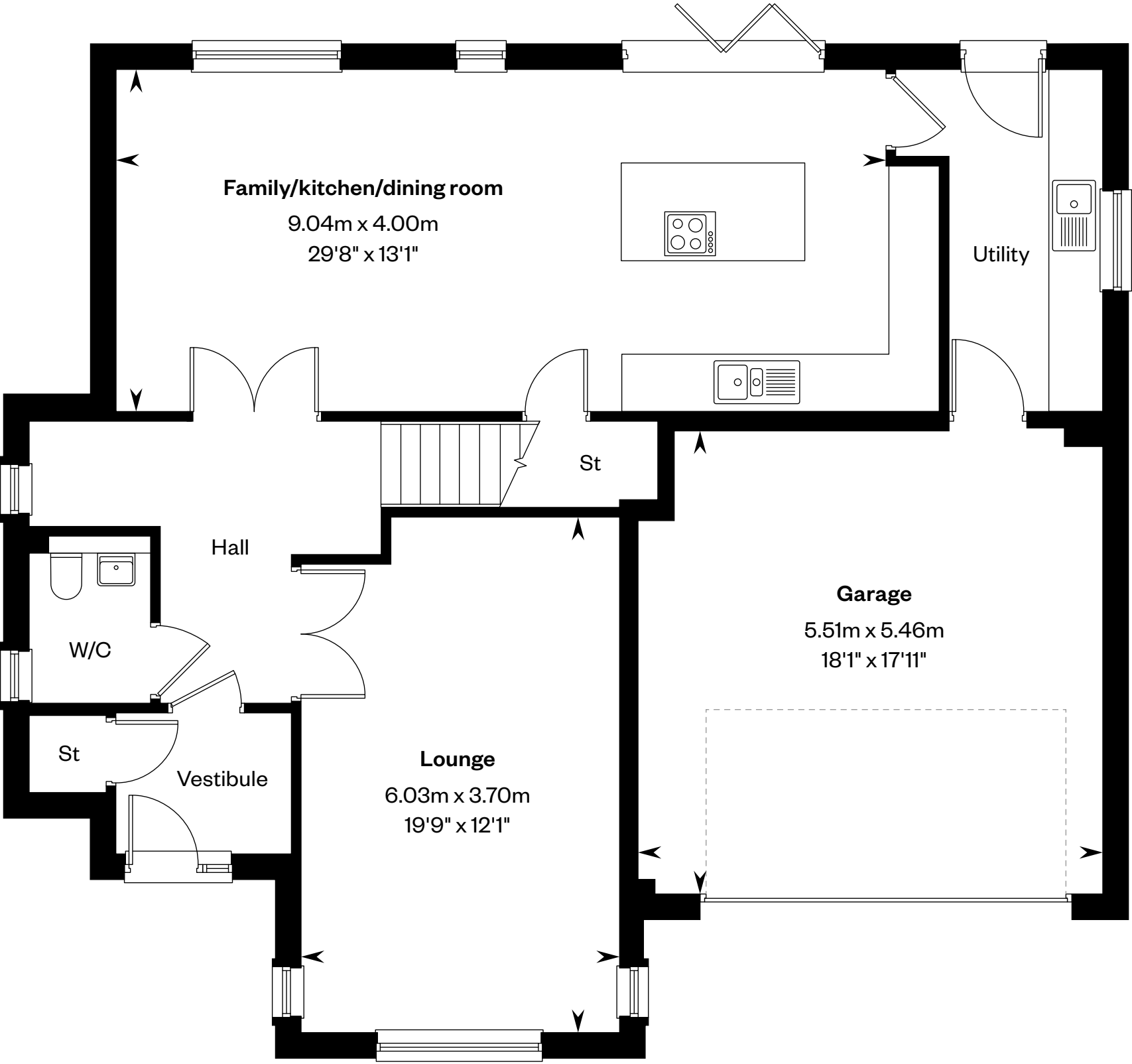
5 bedroom detached home

Plots 44 & 53 – as shown

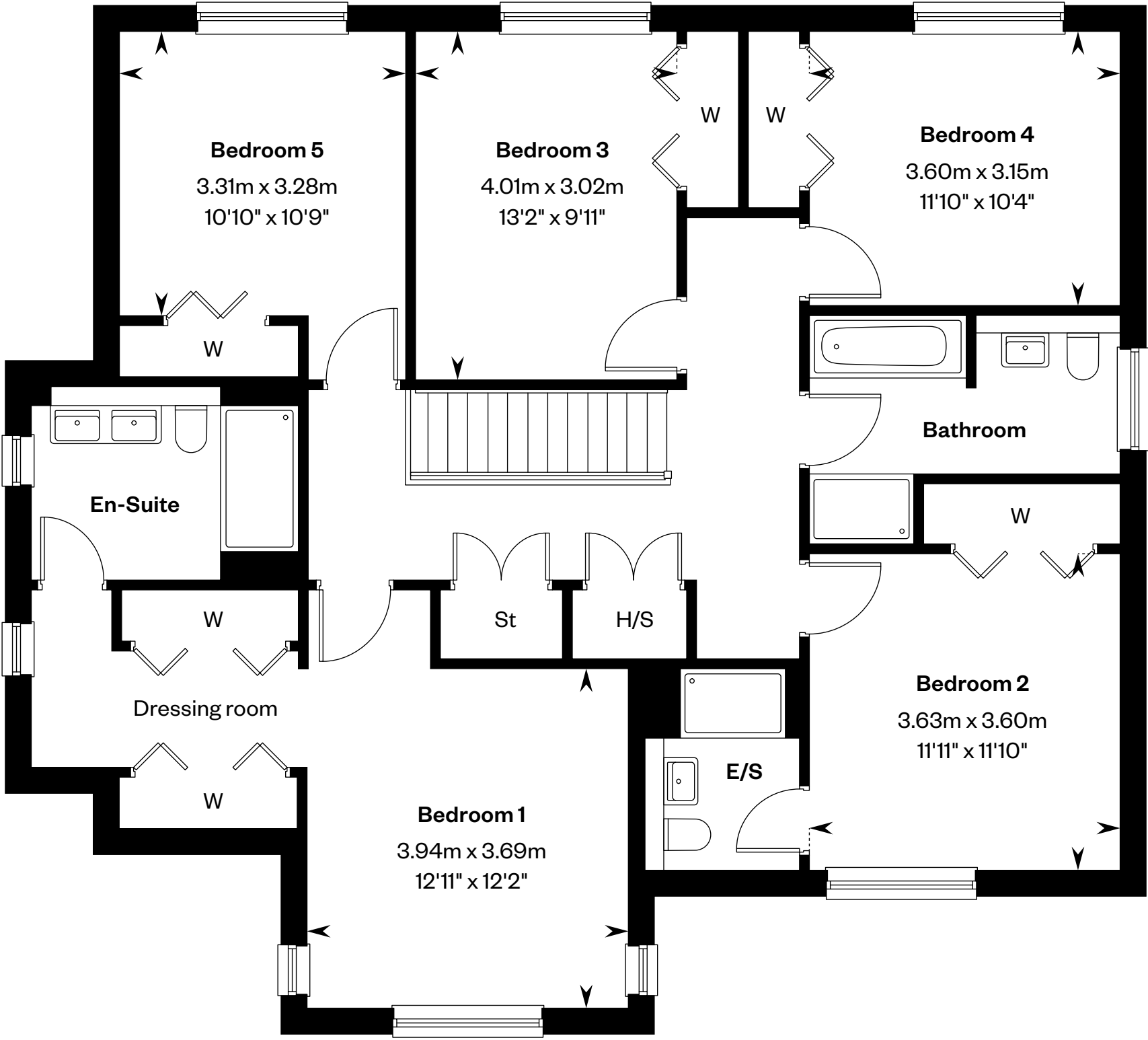
Plots 46 & 52 – handed



This is a Predicted Energy Assessment for properties that are incomplete. Once the property is completed, this rating will be updated and an official Energy Performance certificate will be created for the property.



Ground floor



First floor

E/S: En-Suite. H/S: Heating source cupboard. St: Store cupboard. W: Wardrobe.

IMPORTANT NOTICE TO CUSTOMERS: The Consumer Protection from Unfair Trading Regulations 2008. Cala Homes (West) Limited operates a policy of continual product development and the specifications outlined in this brochure are indicative only. The computer generated images and photographs do not necessarily represent the actual finishings/elevation or treatments, landscaping, furnishings and fittings at this development. Information contained is accurate at date of publication on 17.06.25. See the main brochure for the full Consumer Protection statement.