



The Allan

3 bedroom terraced home



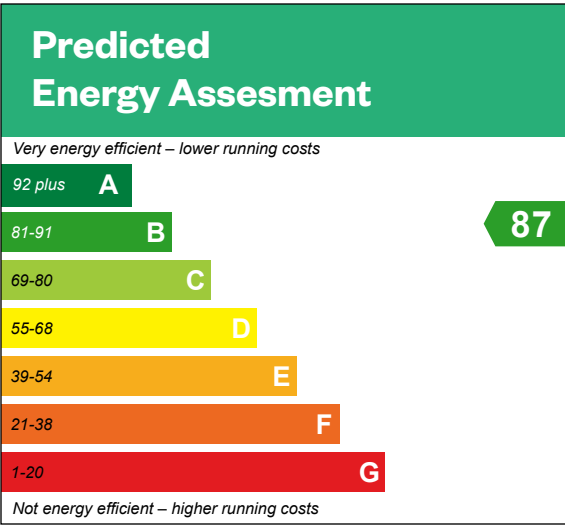
Computer generated image - The Allan

The Allan

3 bedroom terraced home

Plots 25, 26, 27, 28, 29, 88, 89, 90, 125, 126, 127, 129, 134 & 135 – as shown

Plots 23, 24, 128, 132, 133 & 136 – handed





The Arran

3 bedroom terraced home

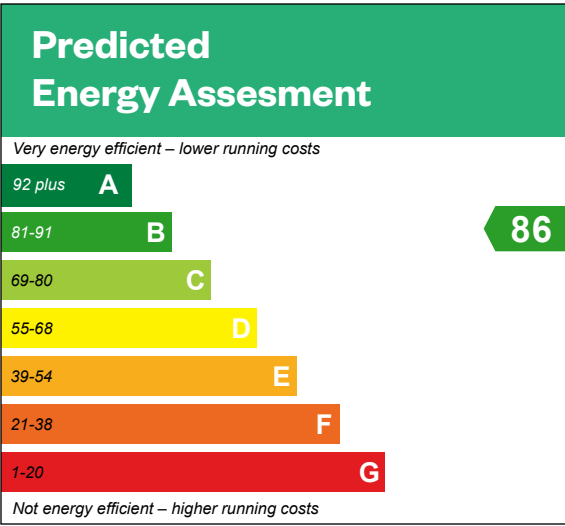


The Arran

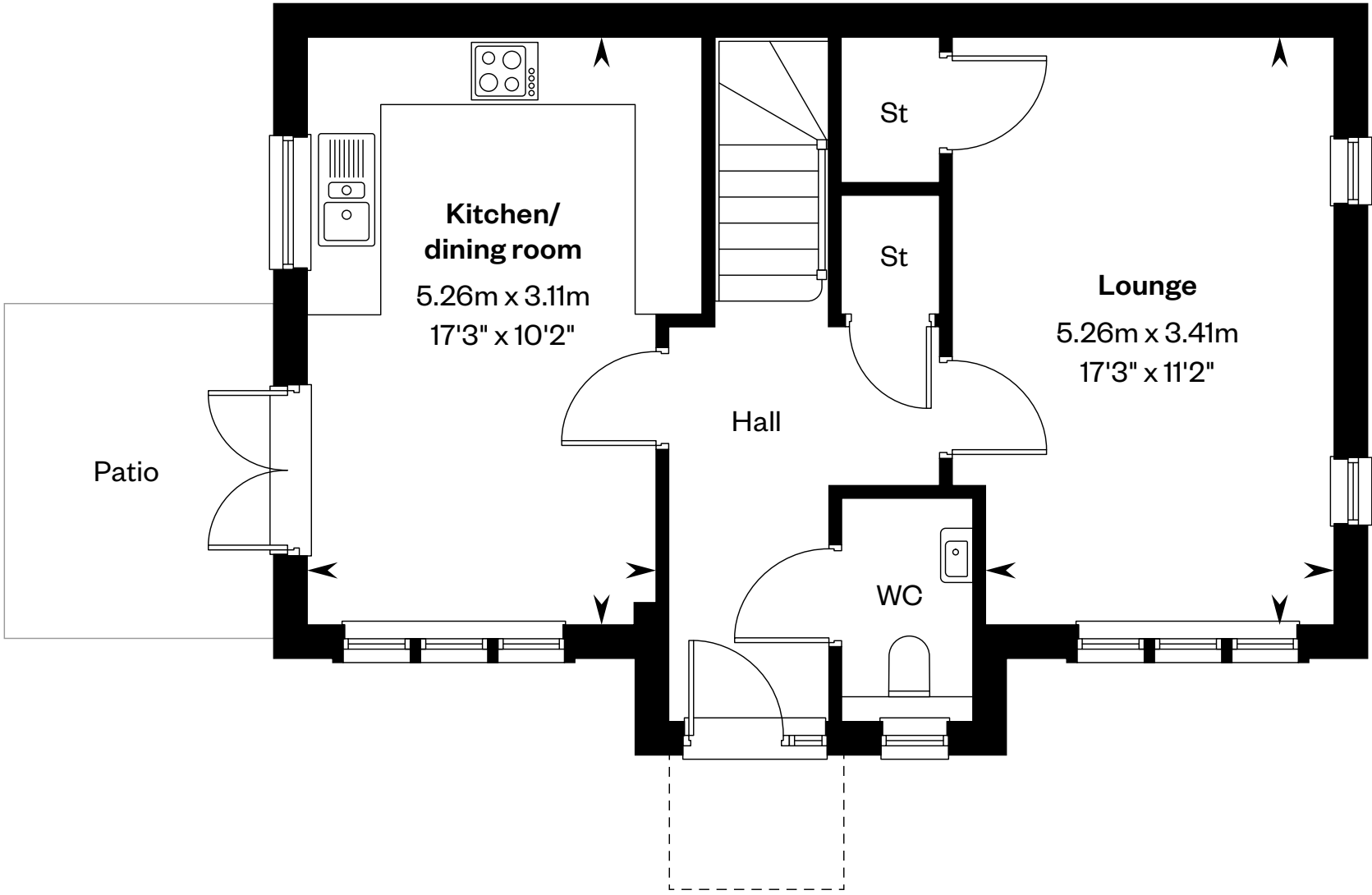
3 bedroom terraced home

Plots 22, 130 & 137 – as shown

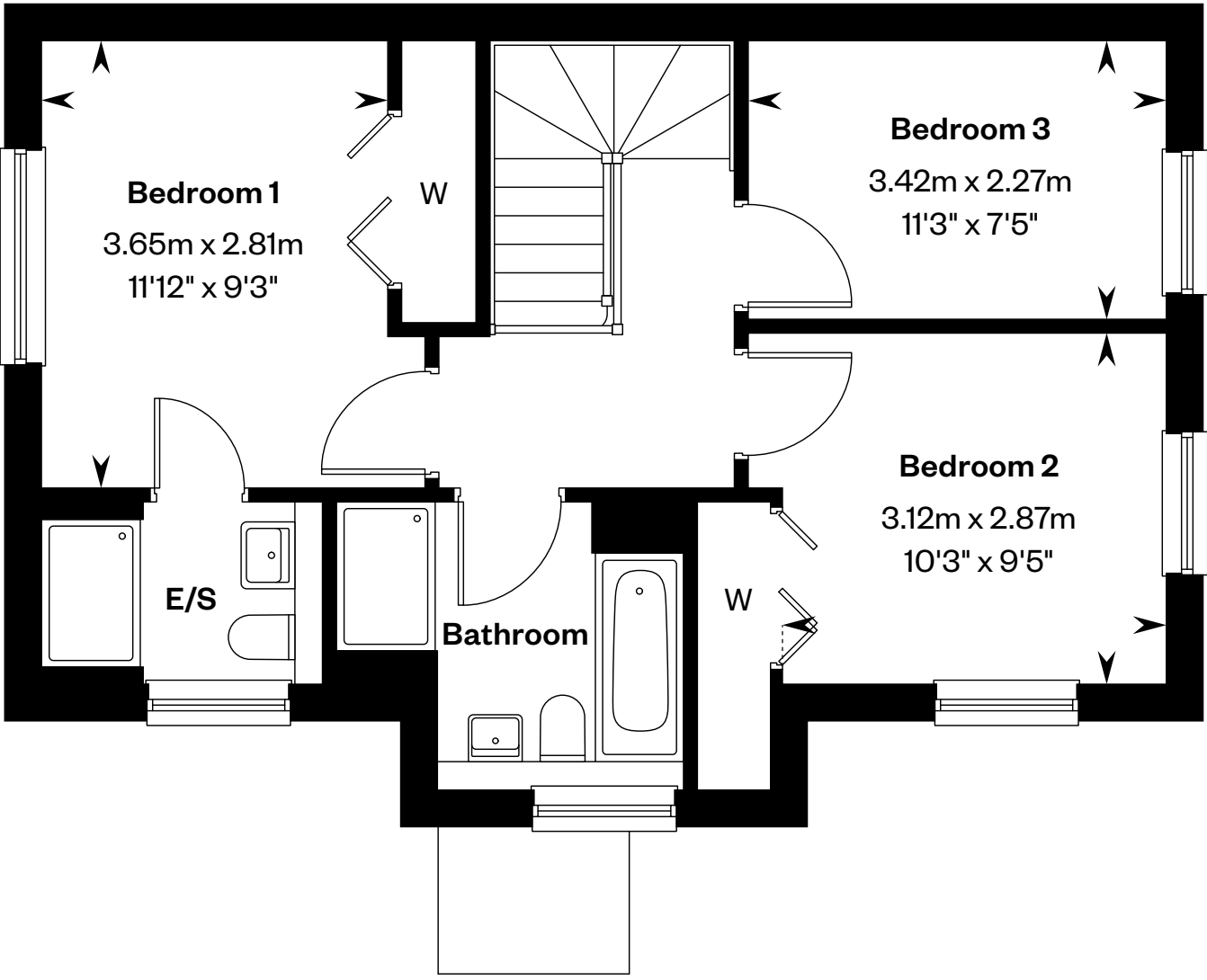
Plots 30, 87, 124 & 131 – handed



This is a Predicted Energy Assessment for properties that are incomplete. Once the property is completed, this rating will be updated and an official Energy Performance certificate will be created for the property.



Ground floor



First floor

Please ask your Sales Consultant for further details. E/S: En-Suite. St: Store cupboard. W: Wardrobe.

IMPORTANT NOTICE TO CUSTOMERS: The Consumer Protection from Unfair Trading Regulations 2008. Cala Homes (East) Limited operates a policy of continual product development and the specifications outlined in this brochure are indicative only. The computer generated images and photographs do not necessarily represent the actual finishings/elevation or treatments, landscaping, furnishings and fittings at this development. Information contained is accurate at date of publication on 02.12.24. See the main brochure for the full Consumer Protection statement.



The Balmaha

4 bedroom detached home

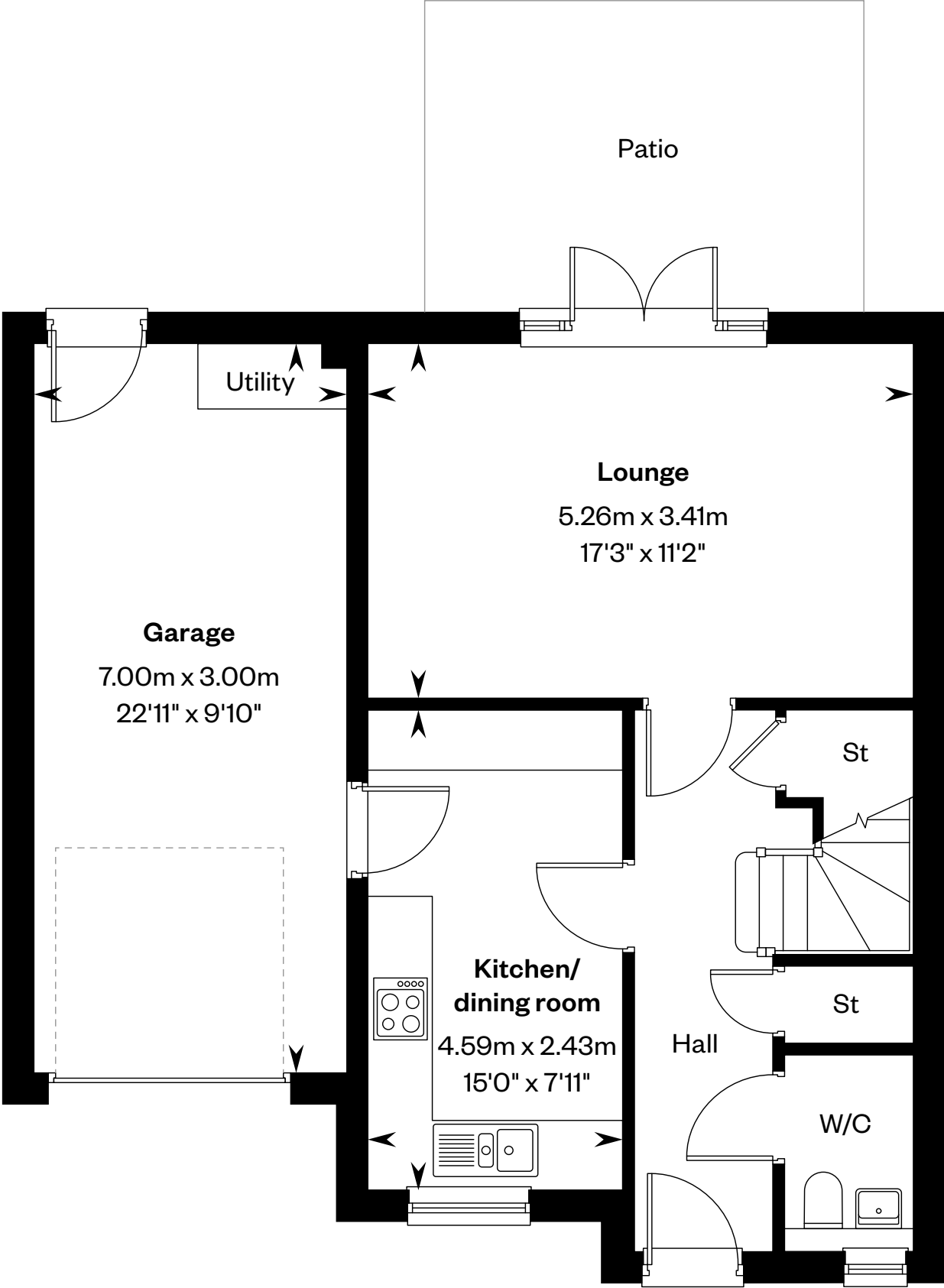
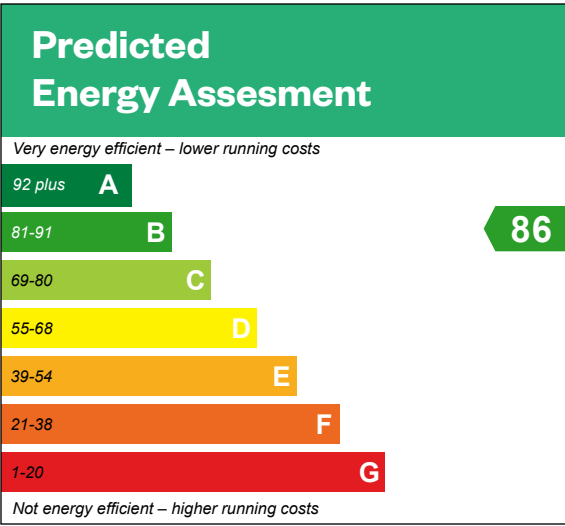


The Balmaha

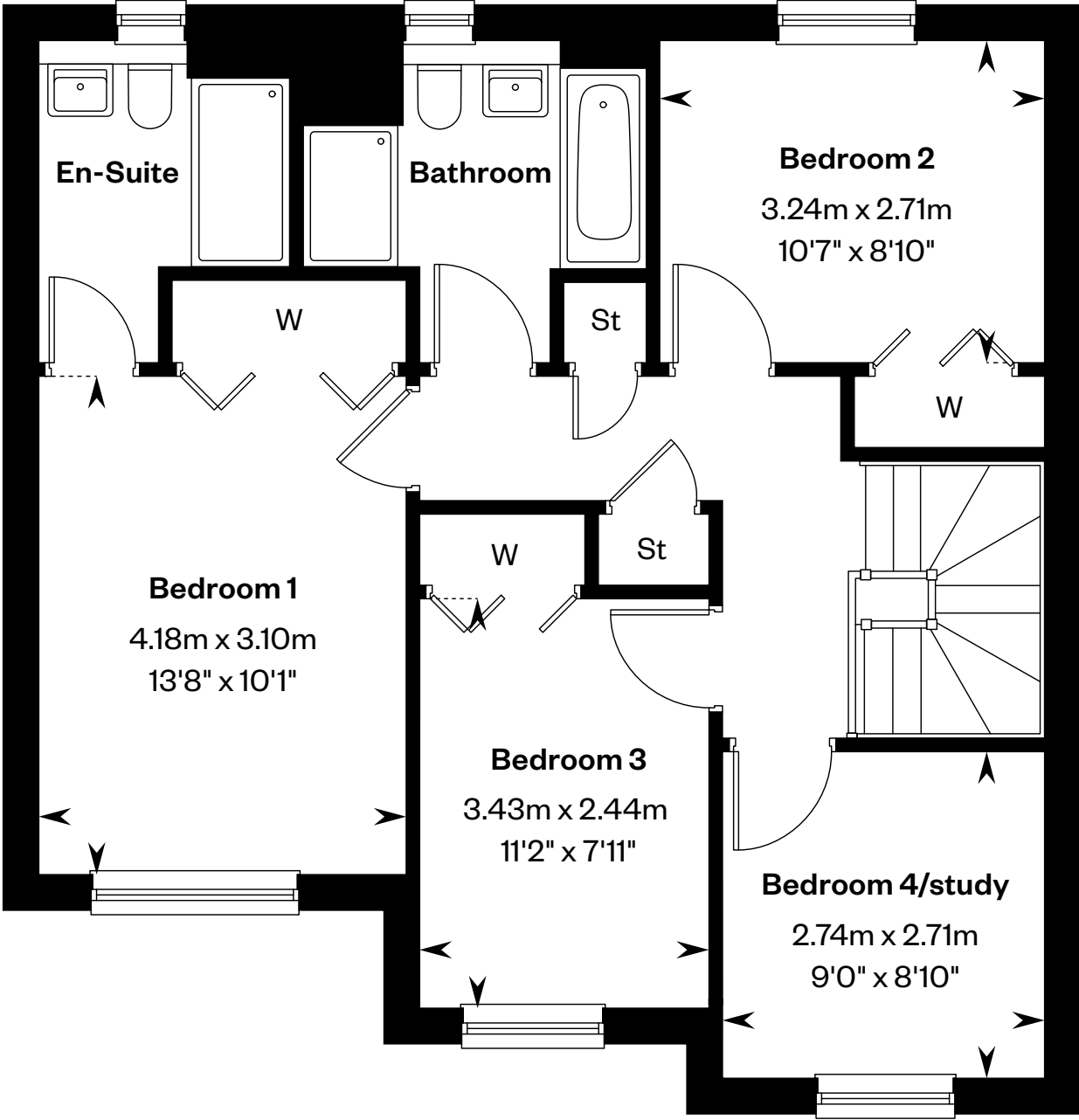
4 bedroom detached home

Plots 91, 140 & 143 – as shown

Plots 138, 139 & 141 – handed



Ground floor



First floor

Please ask your Sales Consultant for further details. St: Store cupboard. W: Wardrobe.

IMPORTANT NOTICE TO CUSTOMERS: The Consumer Protection from Unfair Trading Regulations 2008. Cala Homes (East) Limited operates a policy of continual product development and the specifications outlined in this brochure are indicative only. The computer generated images and photographs do not necessarily represent the actual finishings/elevation or treatments, landscaping, furnishings and fittings at this development. Information contained is accurate at date of publication on 02.12.24. See the main brochure for the full Consumer Protection statement.



The Bruar

4 bedroom detached home

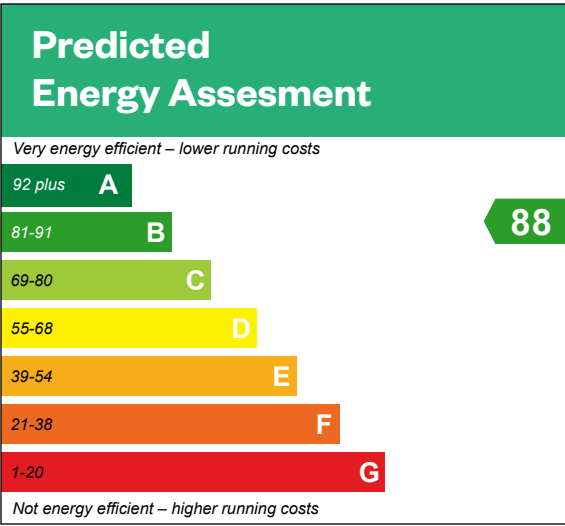


Computer generated image - The Bruar

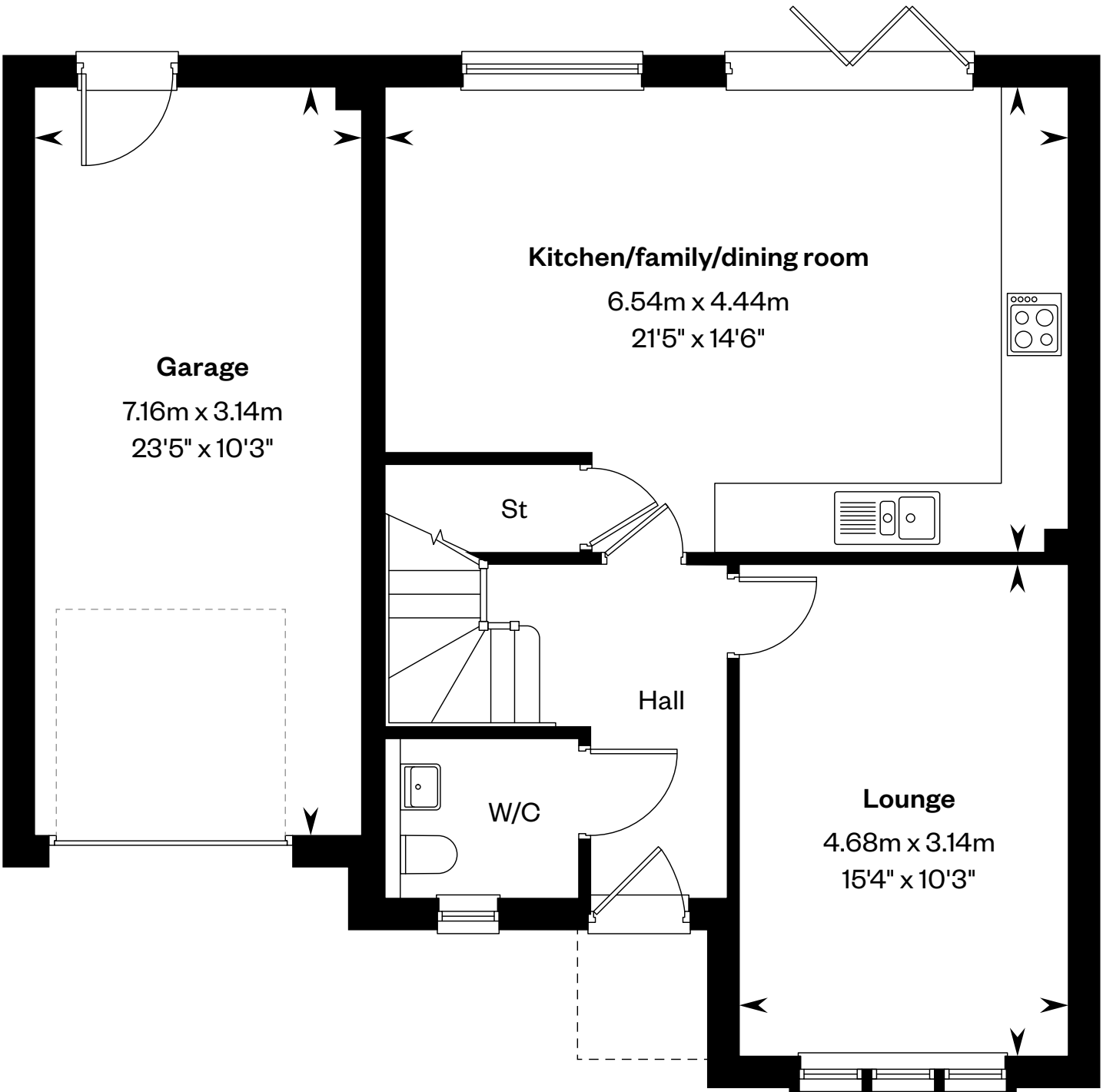
The Bruar

4 bedroom detached home

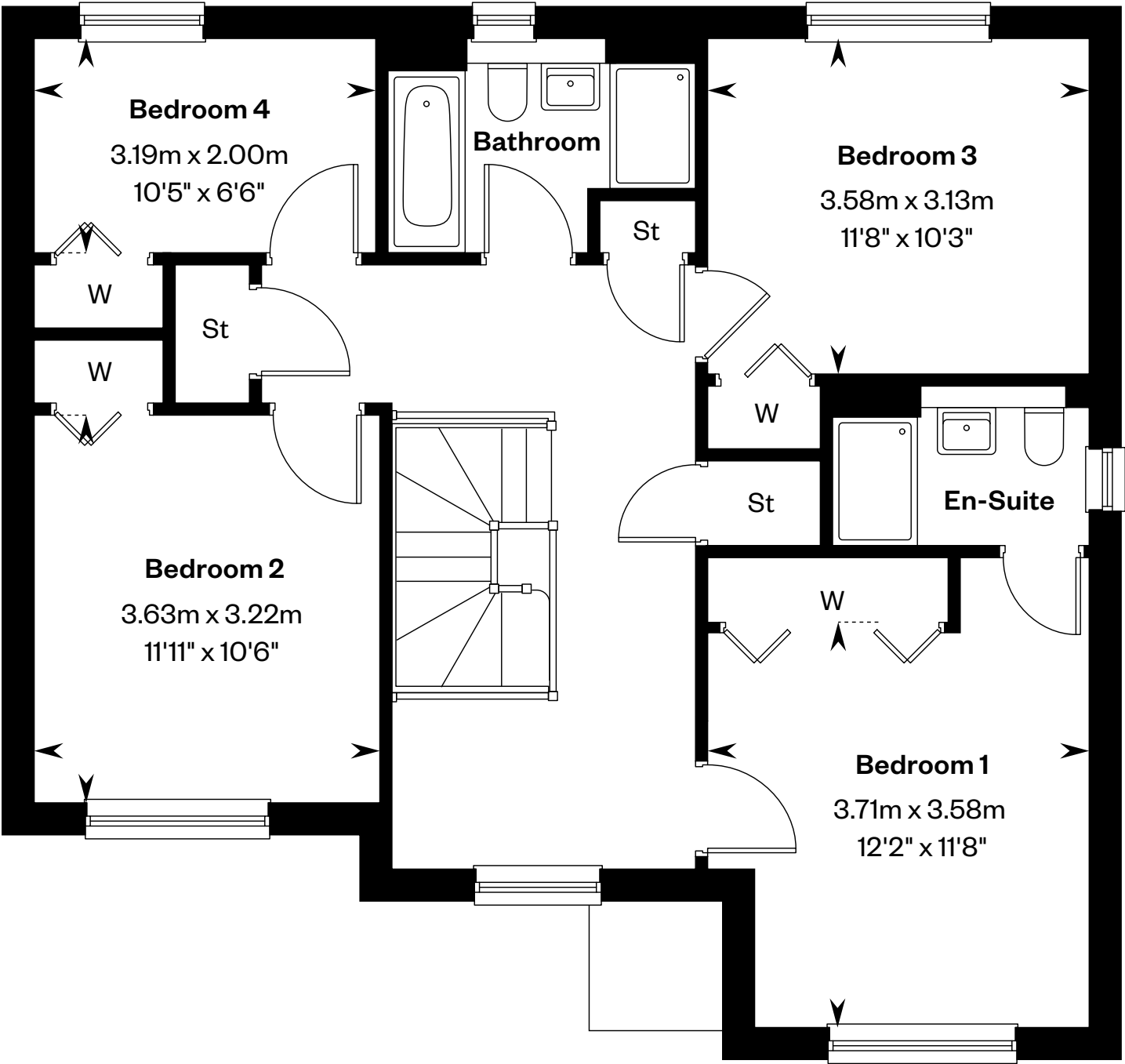
Plots 98, 99 & 144 – as shown



This is a Predicted Energy Assessment for properties that are incomplete. Once the property is completed, this rating will be updated and an official Energy Performance certificate will be created for the property.



Ground floor



First floor

Please ask your Sales Consultant for further details. St: Store cupboard. W: Wardrobe.

IMPORTANT NOTICE TO CUSTOMERS: The Consumer Protection from Unfair Trading Regulations 2008. Cala Homes (East) Limited operates a policy of continual product development and the specifications outlined in this brochure are indicative only. The computer generated images and photographs do not necessarily represent the actual finishings/elevation or treatments, landscaping, furnishings and fittings at this development. Information contained is accurate at date of publication on 02.12.24. See the main brochure for the full Consumer Protection statement.



The Bryce

4 bedroom detached home

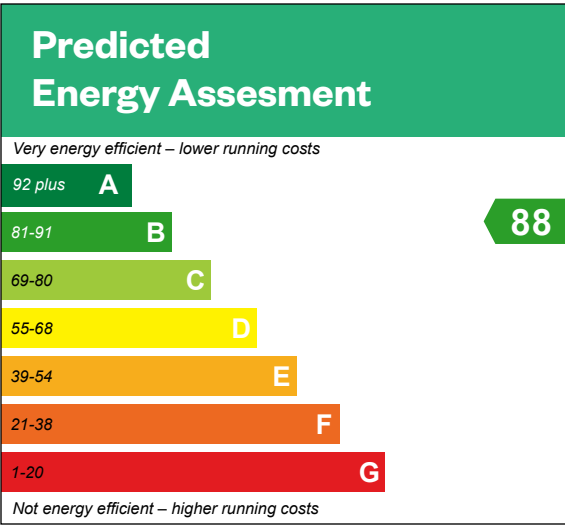


The Bryce

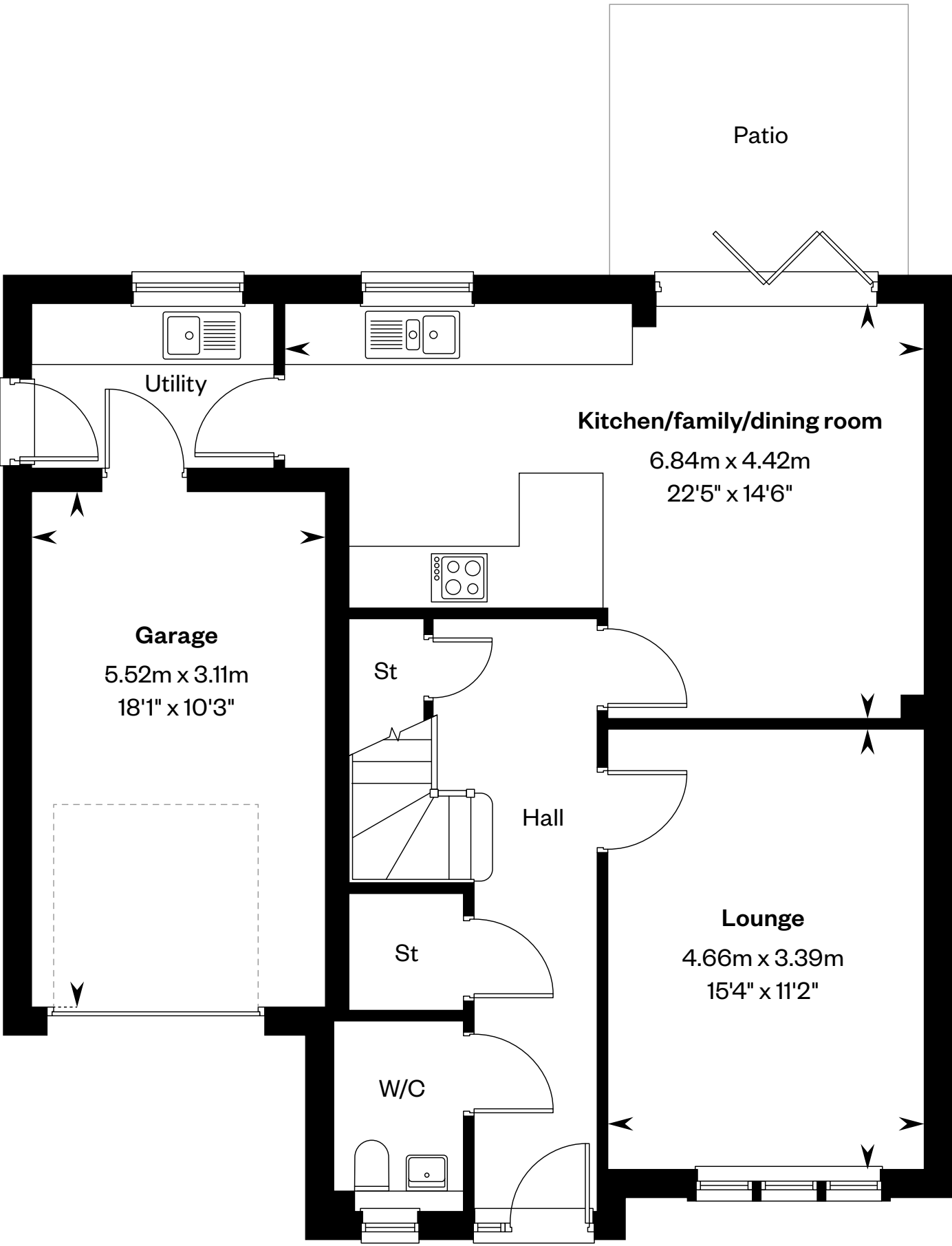
4 bedroom detached home

Plots 17 & 100 – as shown

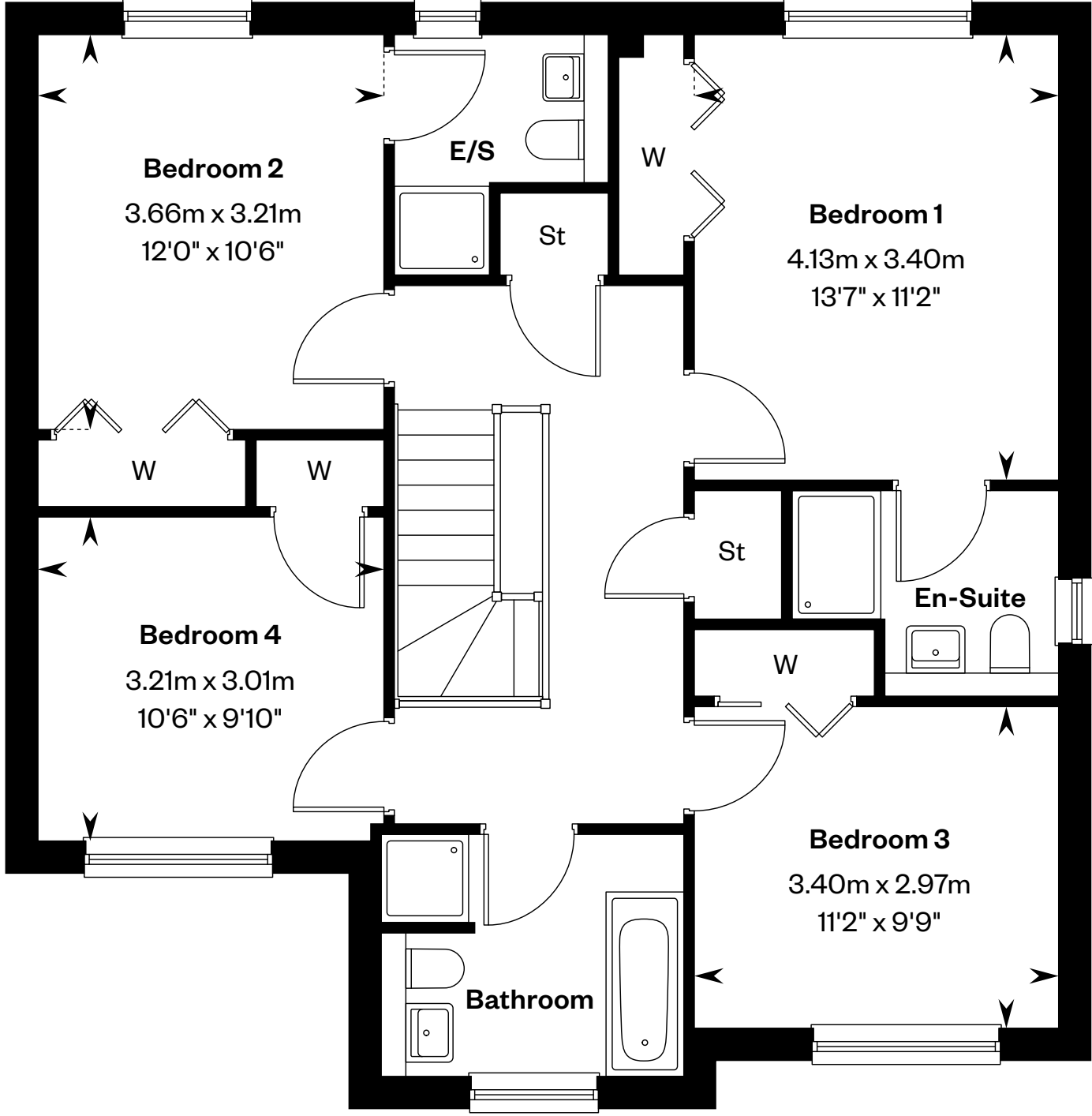
Plots 101 & 142 – handed



This is a Predicted Energy Assessment for properties that are incomplete. Once the property is completed, this rating will be updated and an official Energy Performance certificate will be created for the property.



Ground floor



First floor

Please ask your Sales Consultant for further details. E/S: En-Suite. St: Store cupboard. W: Wardrobe.

IMPORTANT NOTICE TO CUSTOMERS: The Consumer Protection from Unfair Trading Regulations 2008. Cala Homes (East) Limited operates a policy of continual product development and the specifications outlined in this brochure are indicative only. The computer generated images and photographs do not necessarily represent the actual finishings/elevation or treatments, landscaping, furnishings and fittings at this development. Information contained is accurate at date of publication on 02.12.24. See the main brochure for the full Consumer Protection statement.



The Buchanan

4 bedroom townhouse



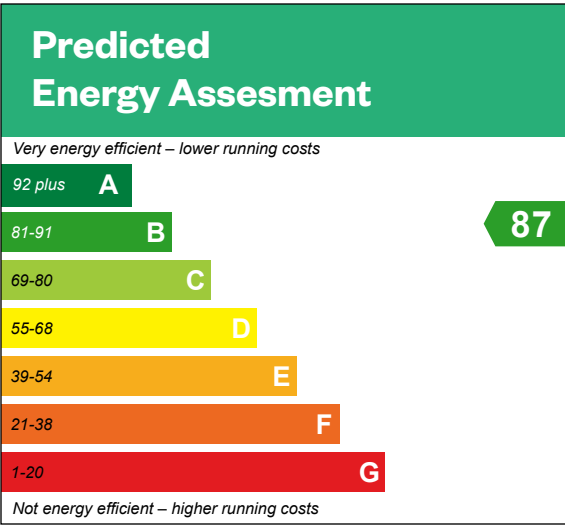
Computer generated image - The Buchanan

The Buchanan

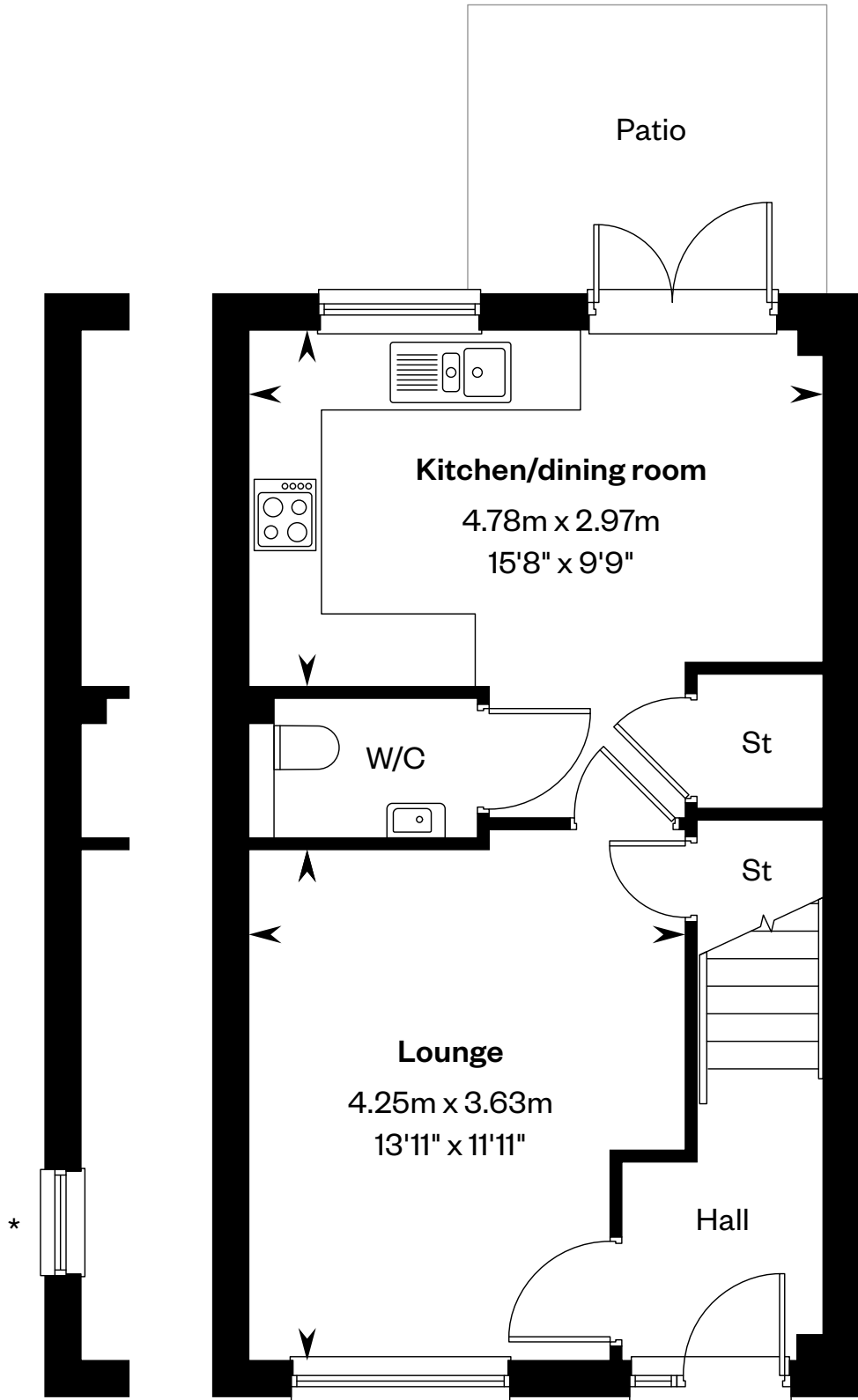
4 bedroom townhouse

Plots 32, 33, 34, 35, 36, 37, 38, 40, 41, 42, 44, 45, 46, 48, 49, 50, 51, 53, 54 & 55 – as shown

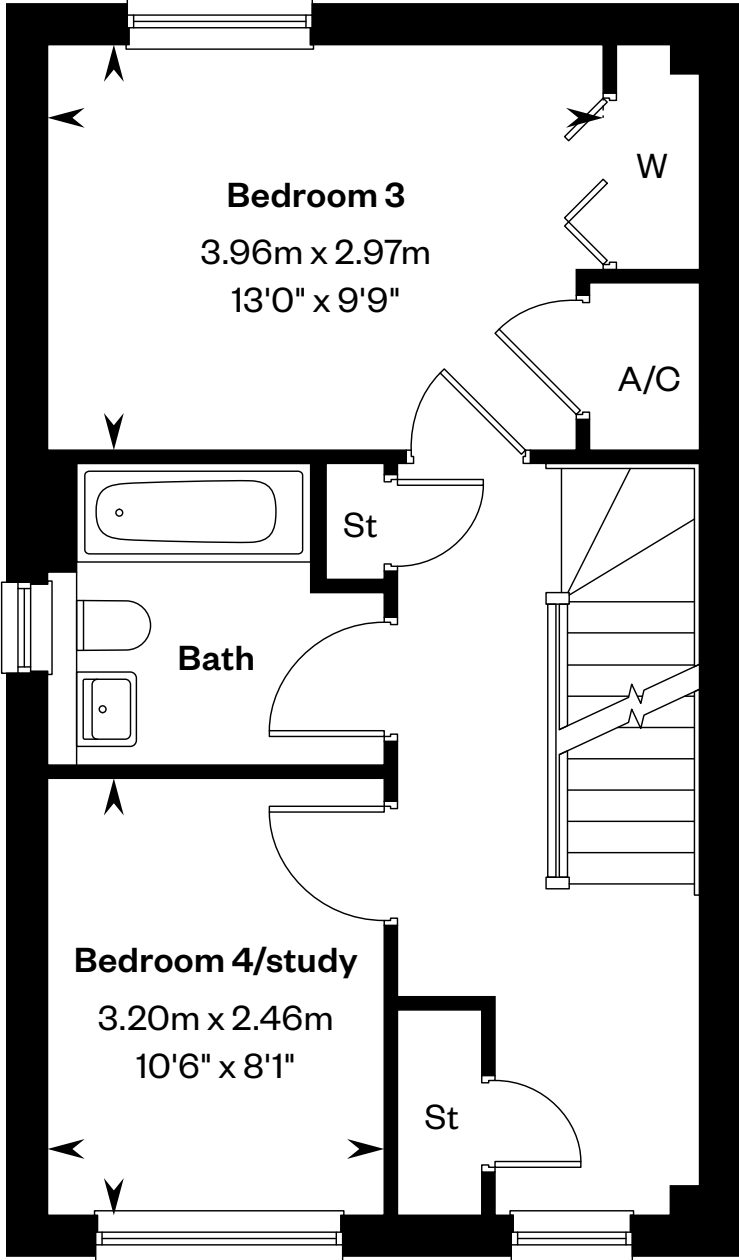
Plots 31, 39, 43, 47, 52 & 56 – handed



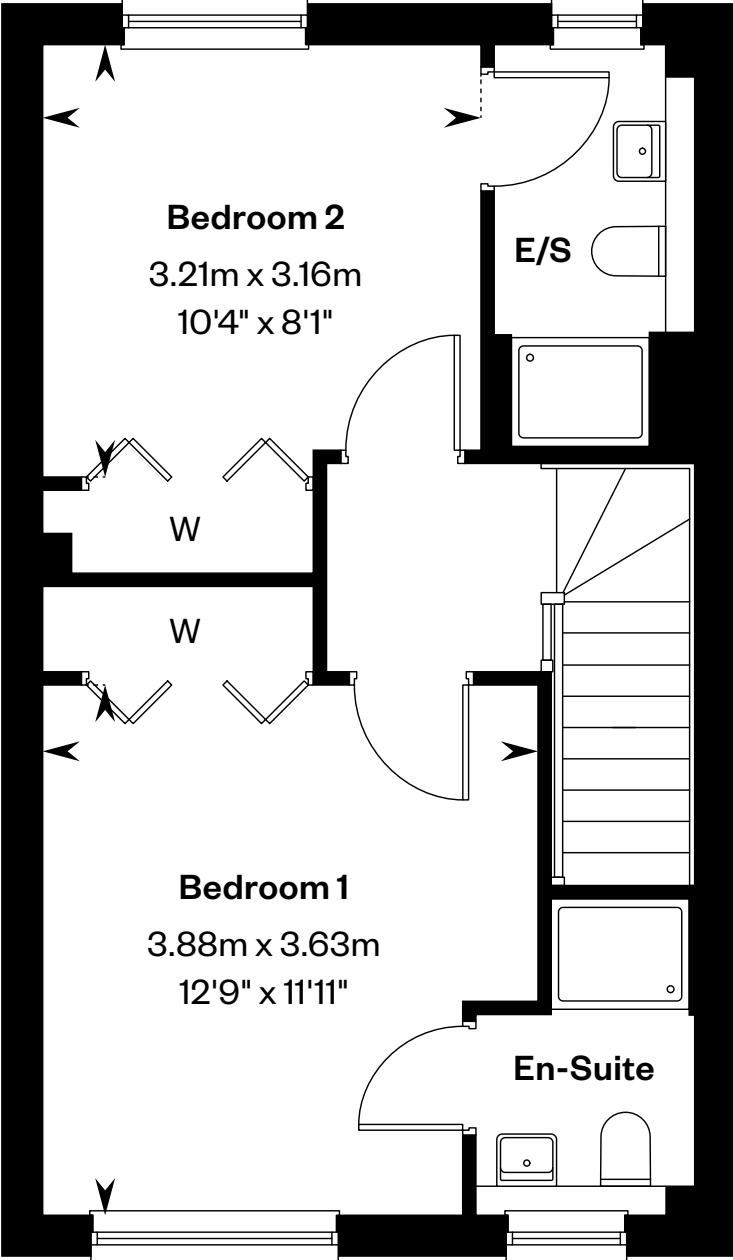
This is a Predicted Energy Assessment for properties that are incomplete. Once the property is completed, this rating will be updated and an official Energy Performance certificate will be created for the property.



Ground floor



First floor



Second floor

*Window to plots 31 and 40 only. Please ask your Sales Consultant for further details. A/C: Airing cupboard. E/S: En-Suite. St: Store cupboard. W: Wardrobe.

IMPORTANT NOTICE TO CUSTOMERS: The Consumer Protection from Unfair Trading Regulations 2008. Cala Homes (East) Limited operates a policy of continual product development and the specifications outlined in this brochure are indicative only. The computer generated images and photographs do not necessarily represent the actual finishings/elevation or treatments, landscaping, furnishings and fittings at this development. Information contained is accurate at date of publication on 02.12.24. See the main brochure for the full Consumer Protection statement.



The Cairn

4 bedroom detached home



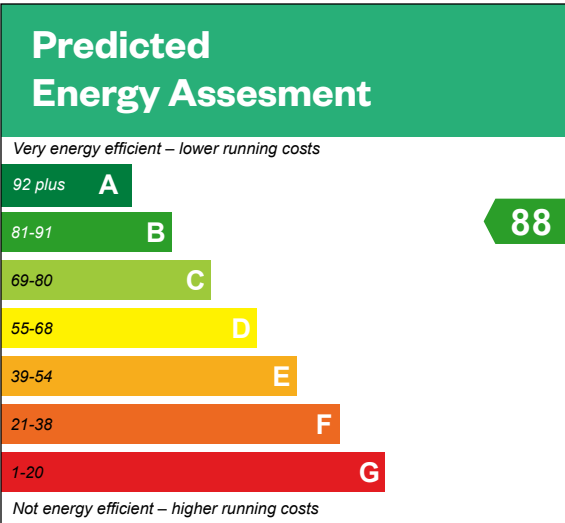
Computer generated image - The Cairn

The Cairn

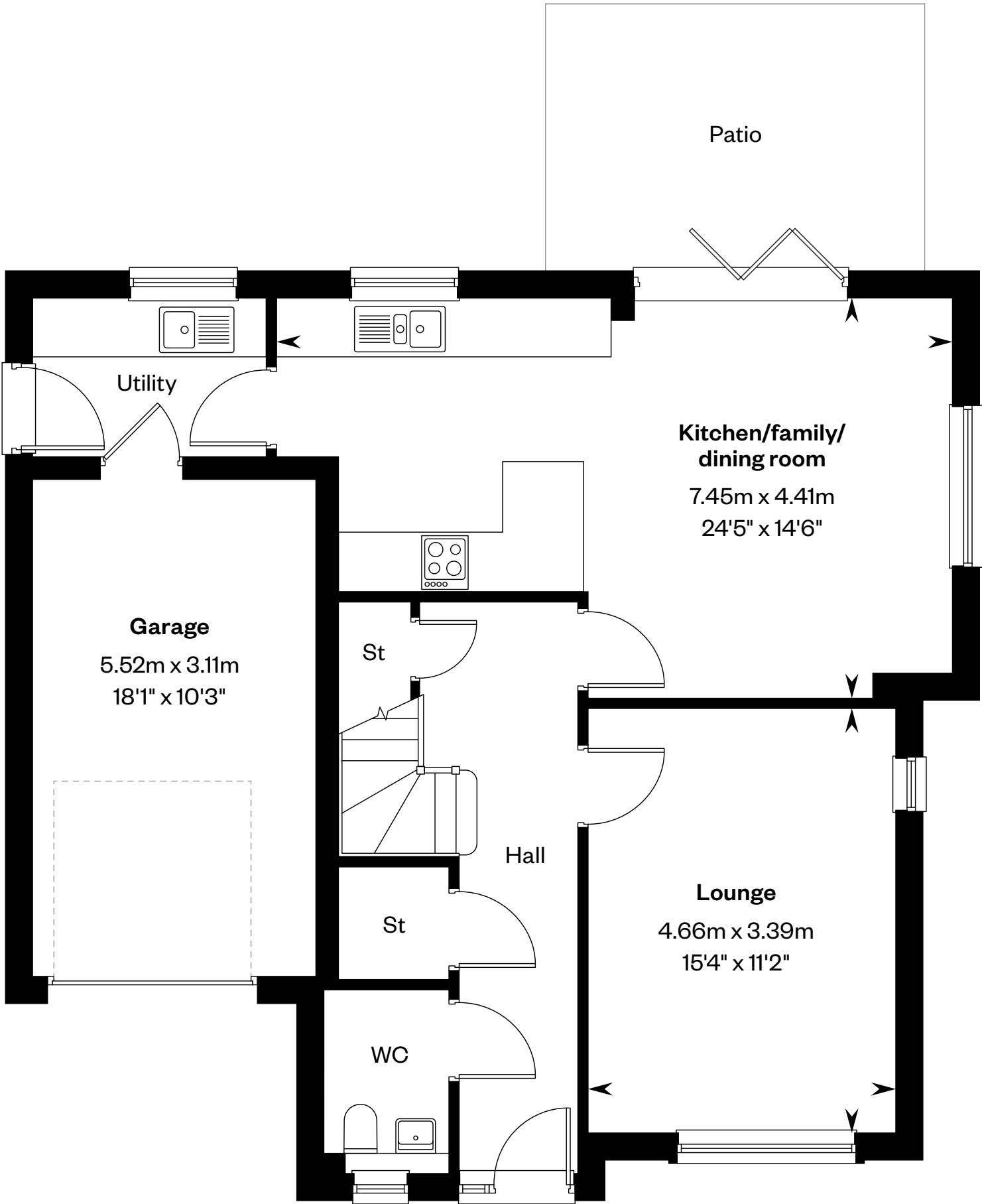
4 bedroom detached home

Plots 108 & 117 – as shown

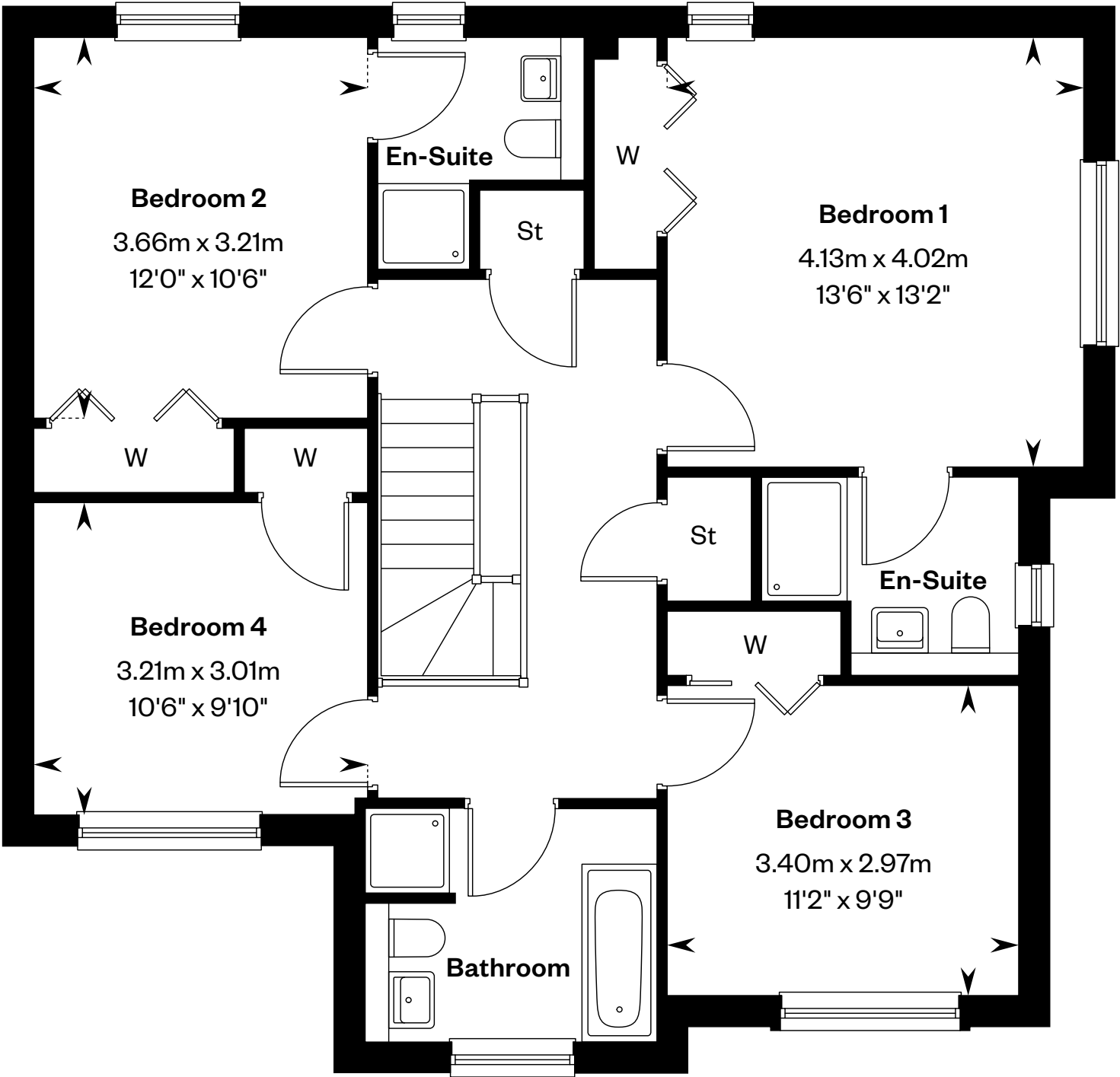
Plot 103 – handed



This is a Predicted Energy Assessment for properties that are incomplete. Once the property is completed, this rating will be updated and an official Energy Performance certificate will be created for the property.



Ground floor



First floor

Please ask your Sales Consultant for further details. St: Store cupboard. W: Wardrobe.

IMPORTANT NOTICE TO CUSTOMERS: The Consumer Protection from Unfair Trading Regulations 2008. Cala Homes (East) Limited operates a policy of continual product development and the specifications outlined in this brochure are indicative only. The computer generated images and photographs do not necessarily represent the actual finishings/elevation or treatments, landscaping, furnishings and fittings at this development. Information contained is accurate at date of publication on 02.12.24. See the main brochure for the full Consumer Protection statement.



The Cleland

4 bedroom detached home



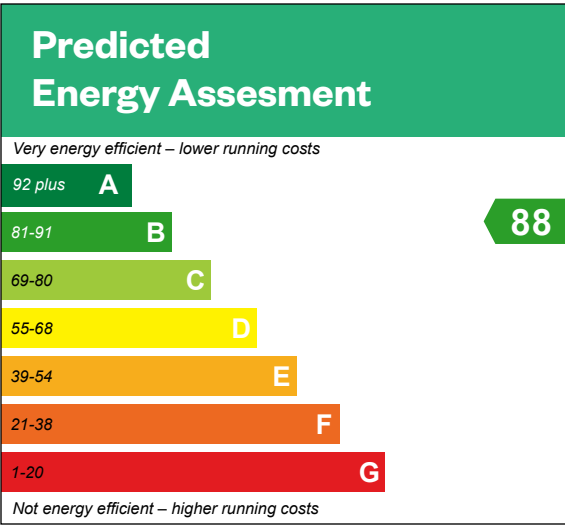
Computer generated image - The Cleland

The Cleland

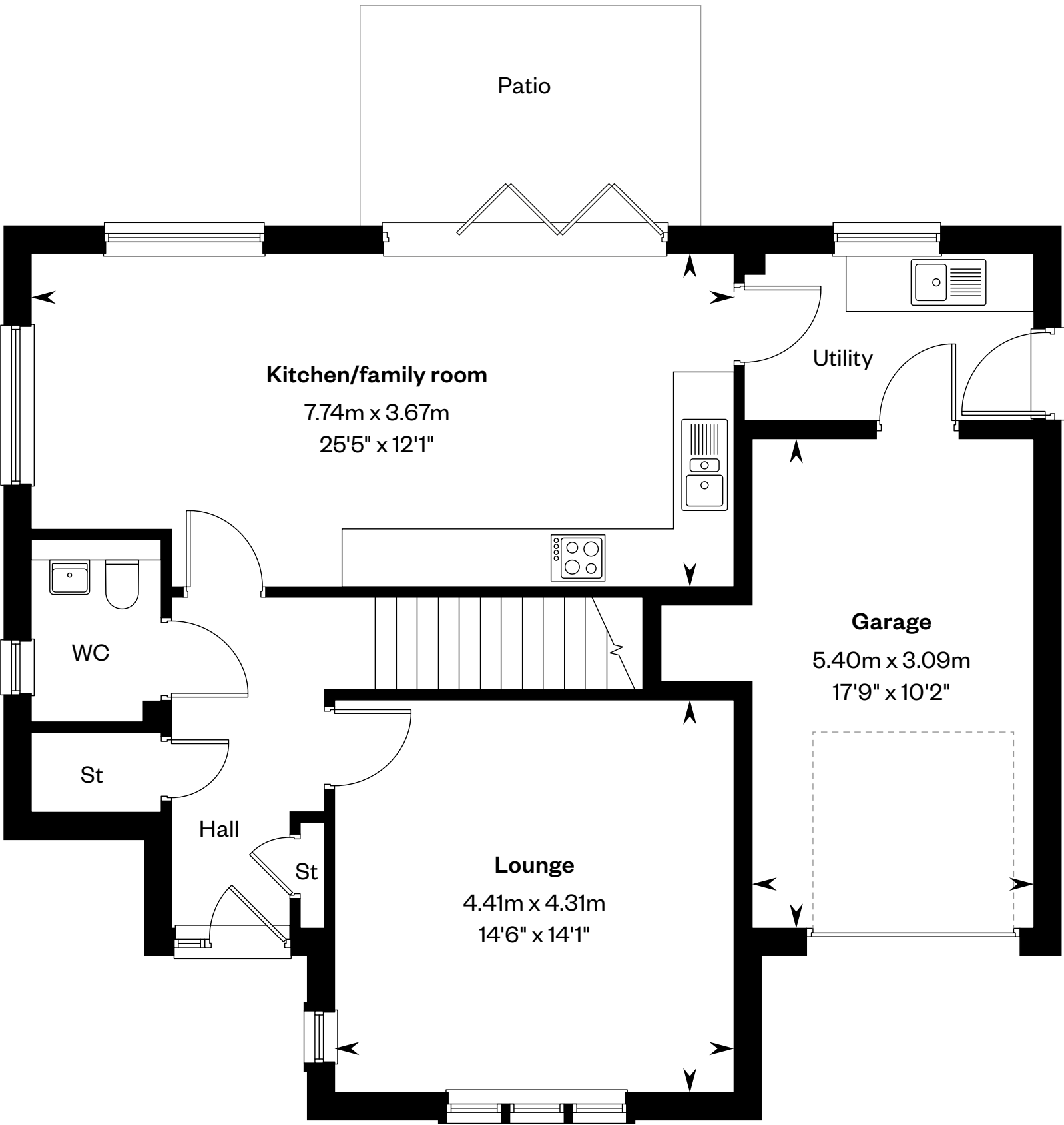
4 bedroom detached home

Plots 16, 96, 102 & 109 – as shown

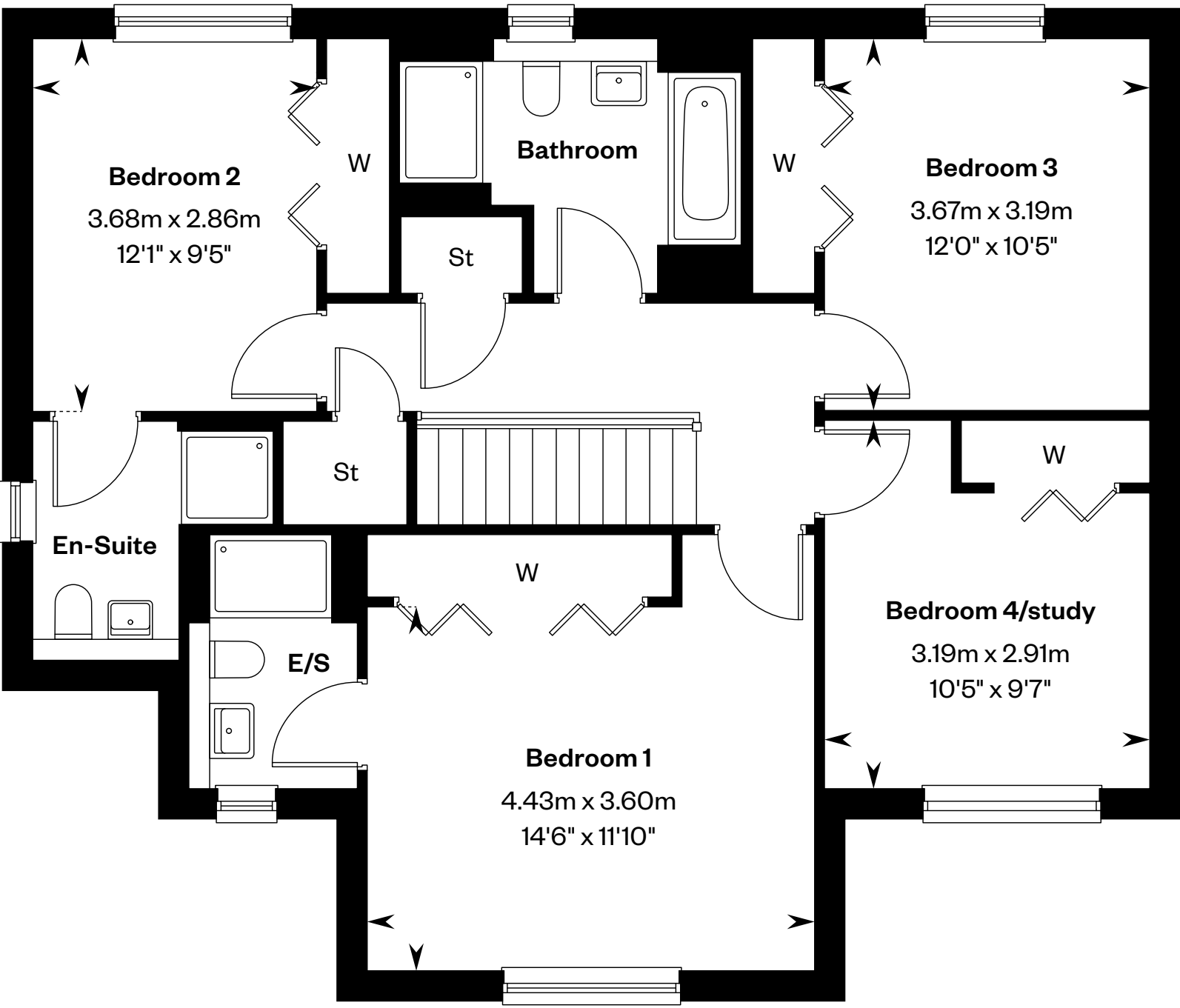
Plot 21, 97 & 106 – handed



This is a Predicted Energy Assessment for properties that are incomplete. Once the property is completed, this rating will be updated and an official Energy Performance certificate will be created for the property.



Ground floor



First floor

Please ask your Sales Consultant for further details. E/S: En-Suite. St: Store cupboard. W: Wardrobe.

IMPORTANT NOTICE TO CUSTOMERS: The Consumer Protection from Unfair Trading Regulations 2008. Cala Homes (East) Limited operates a policy of continual product development and the specifications outlined in this brochure are indicative only. The computer generated images and photographs do not necessarily represent the actual finishings/elevation or treatments, landscaping, furnishings and fittings at this development. Information contained is accurate at date of publication on 02.12.24. See the main brochure for the full Consumer Protection statement.



The Colville

4 bedroom detached home with study

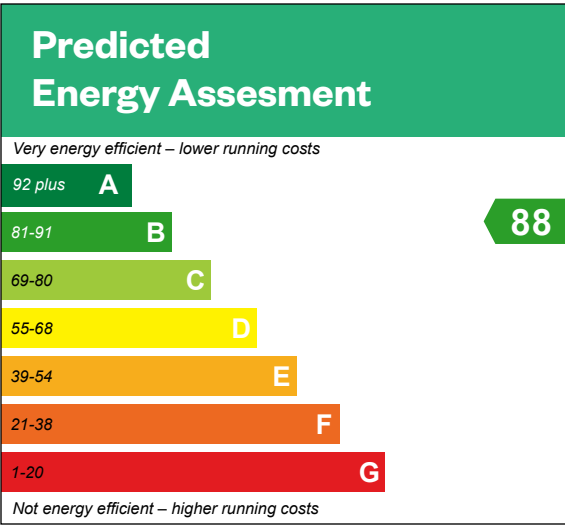


The Colville

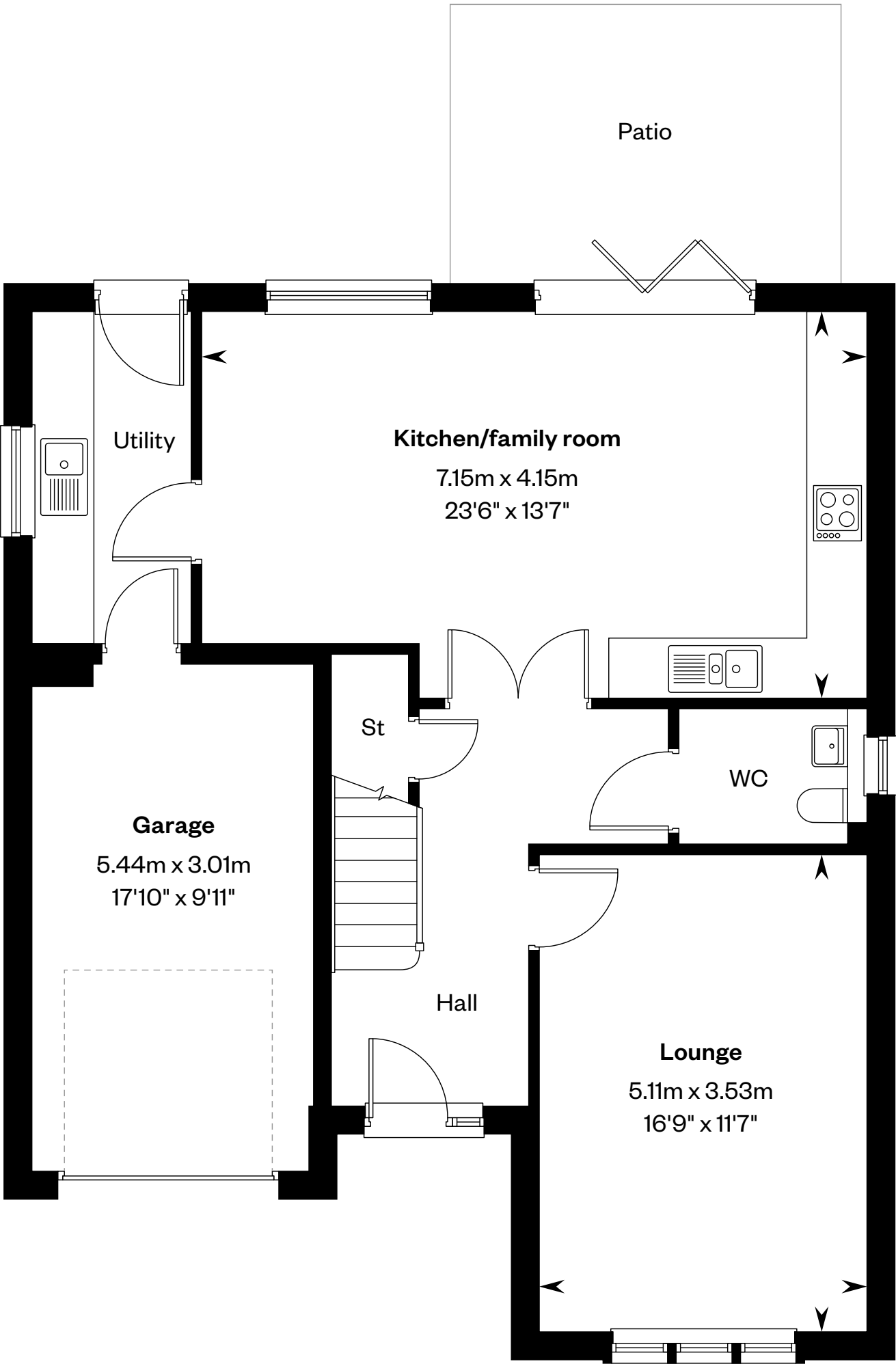
4 bedroom detached home with study

Plots 6, 93, 95, 110, 112, 114 & 116 – as shown

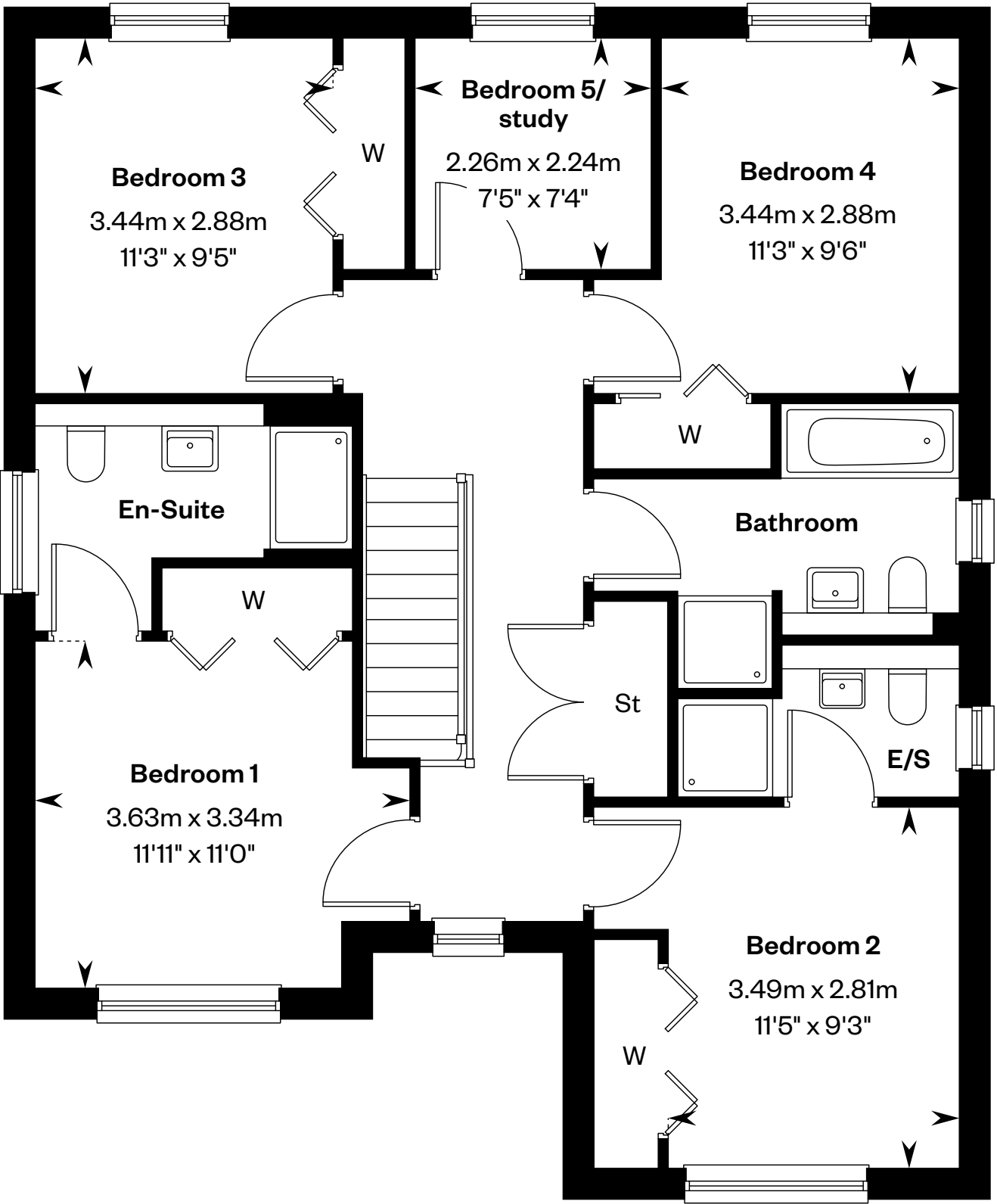
Plot 2 – handed



This is a Predicted Energy Assessment for properties that are incomplete. Once the property is completed, this rating will be updated and an official Energy Performance certificate will be created for the property.



Ground floor



First floor

Please ask your Sales Consultant for further details. E/S: En-Suite. St: Store cupboard. W: Wardrobe.

IMPORTANT NOTICE TO CUSTOMERS: The Consumer Protection from Unfair Trading Regulations 2008. Cala Homes (East) Limited operates a policy of continual product development and the specifications outlined in this brochure are indicative only. The computer generated images and photographs do not necessarily represent the actual finishings/elevation or treatments, landscaping, furnishings and fittings at this development. Information contained is accurate at date of publication on 02.12.24. See the main brochure for the full Consumer Protection statement.



The Crichton

5 bedroom detached home



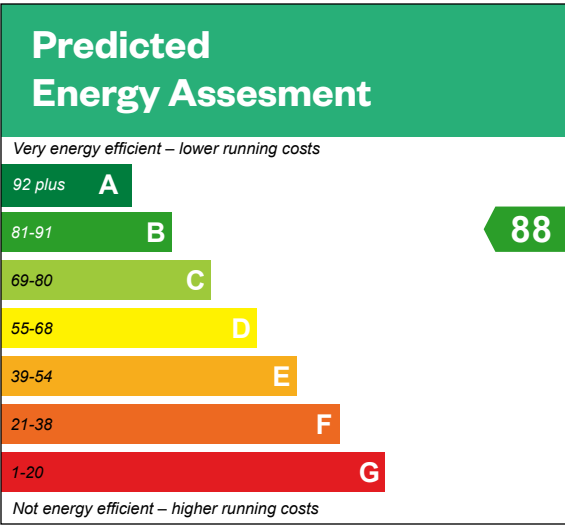
Computer generated image - The Crichton

The Crichton

5 bedroom detached home

Plots 3, 19, 94, 107, 111 & 115 – as shown

Plots 7, 9, 20, 92 & 104 – handed





The Darroch

5 bedroom detached home



Computer generated image - The Darroch



The Dewar

5 bedroom detached home



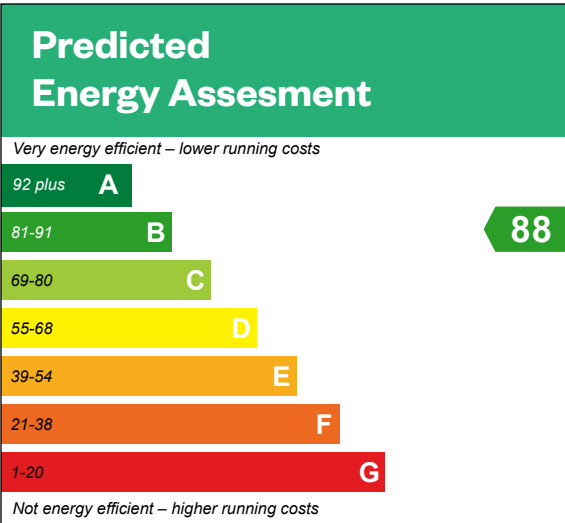
Computer generated image - The Dewar

The Dewar

5 bedroom detached home

Plots 5 & 11 – as shown

Plot 5 has a different garage and window configuration.
Please speak to a sales advisor for details





The Elliot

4 bedroom detached home with study



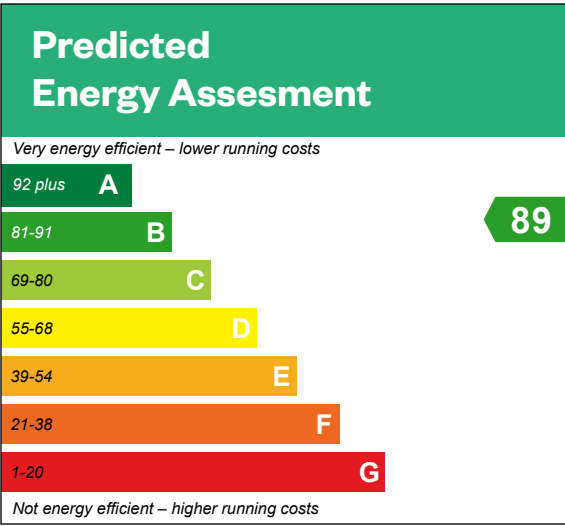
Computer generated image - The Elliot

The Elliot

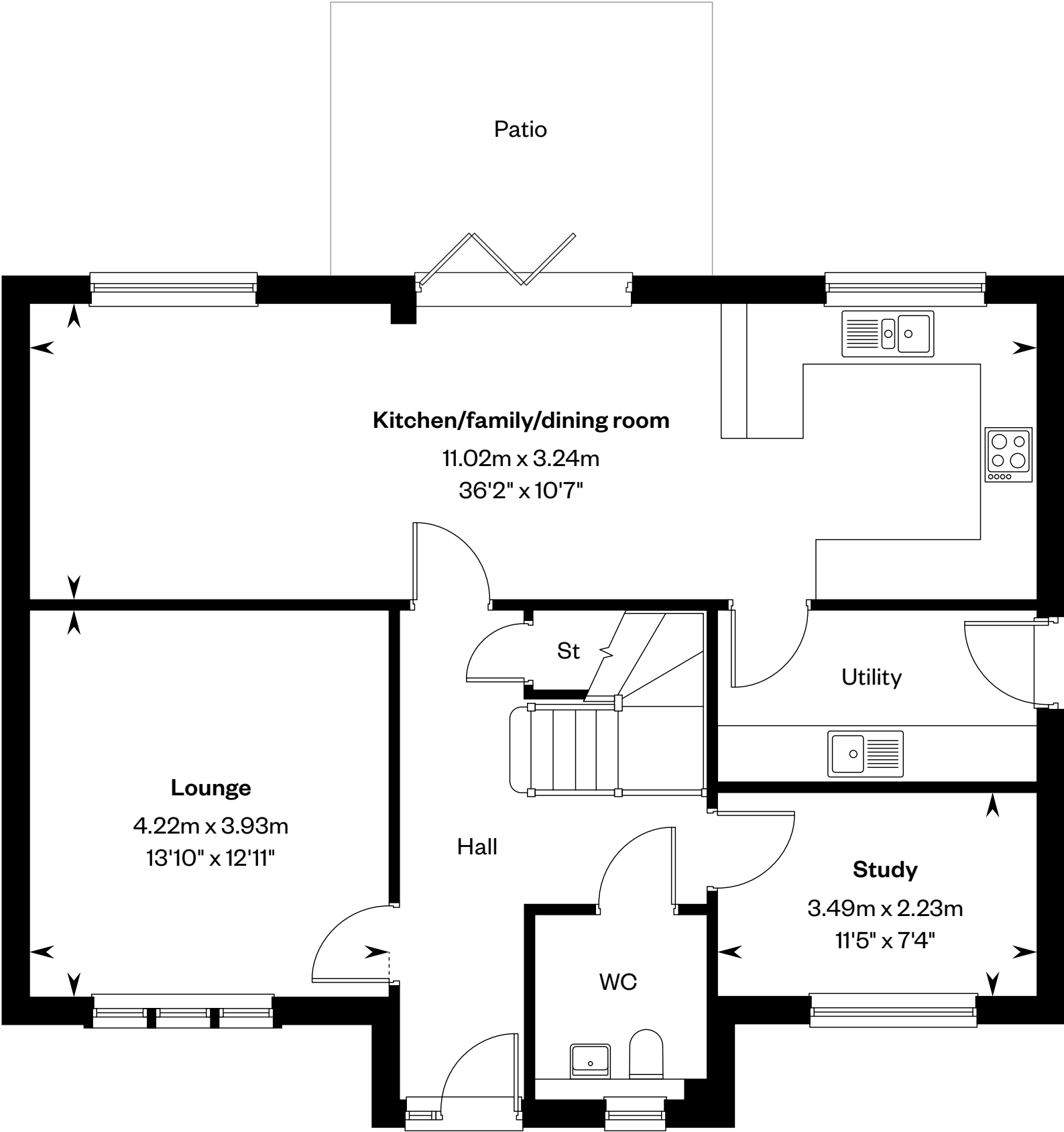
4 bedroom detached home with study

Plot 12 – as shown

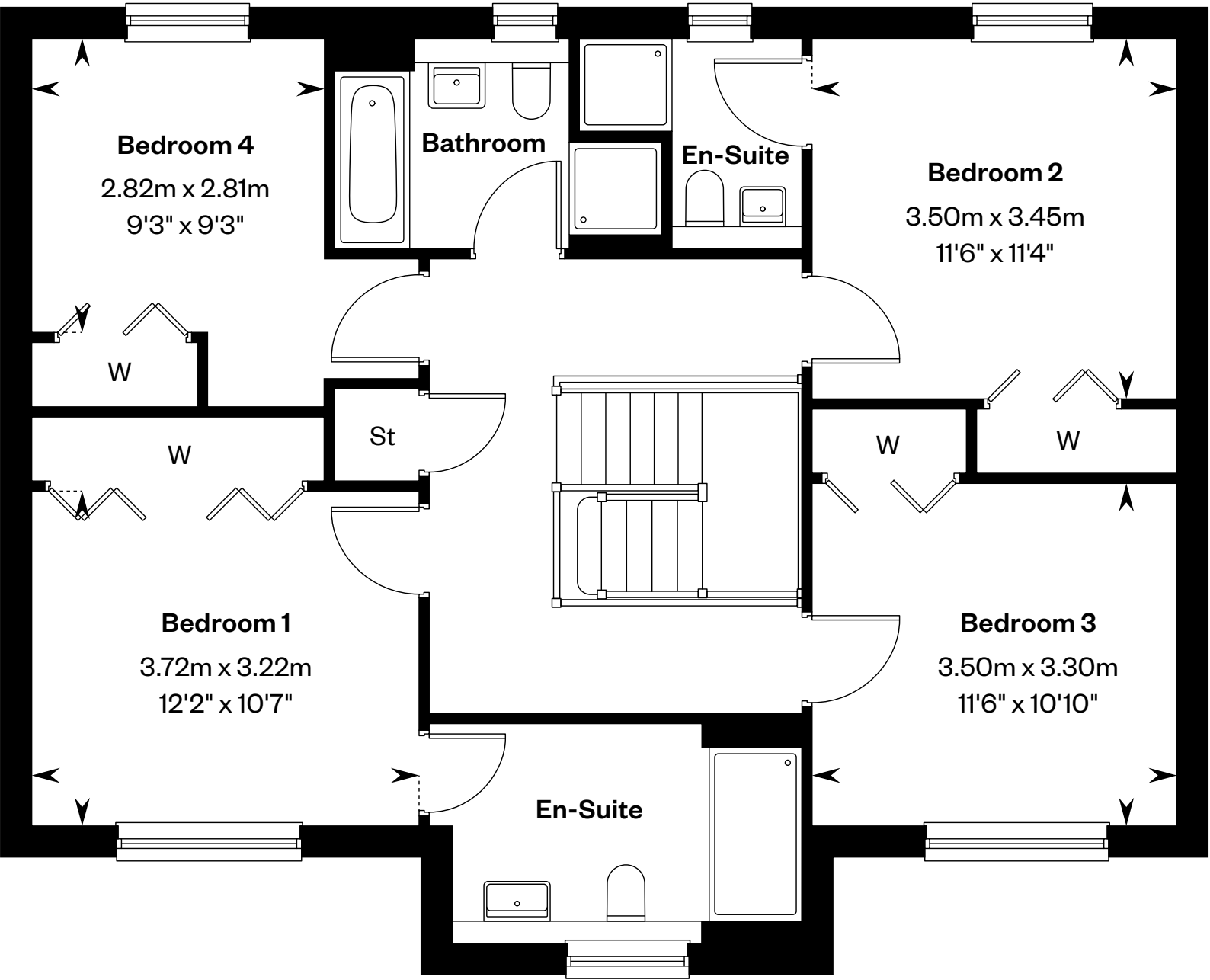
Plot 15 – handed



This is a Predicted Energy Assessment for properties that are incomplete. Once the property is completed, this rating will be updated and an official Energy Performance certificate will be created for the property.



Ground floor



First floor

Please ask your Sales Consultant for further details. St: Store cupboard. W: Wardrobe.

IMPORTANT NOTICE TO CUSTOMERS: The Consumer Protection from Unfair Trading Regulations 2008. Cala Homes (East) Limited operates a policy of continual product development and the specifications outlined in this brochure are indicative only. The computer generated images and photographs do not necessarily represent the actual finishings/elevation or treatments, landscaping, furnishings and fittings at this development. Information contained is accurate at date of publication on 02.12.24. See the main brochure for the full Consumer Protection statement.