

# The Adam

2 bedroom terraced home



Computer Generated Image - Typical Adams

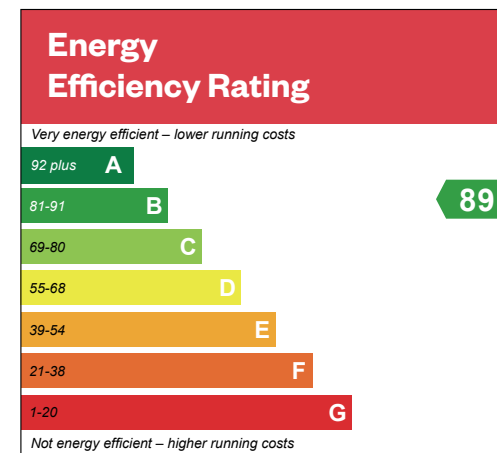


# The Adam

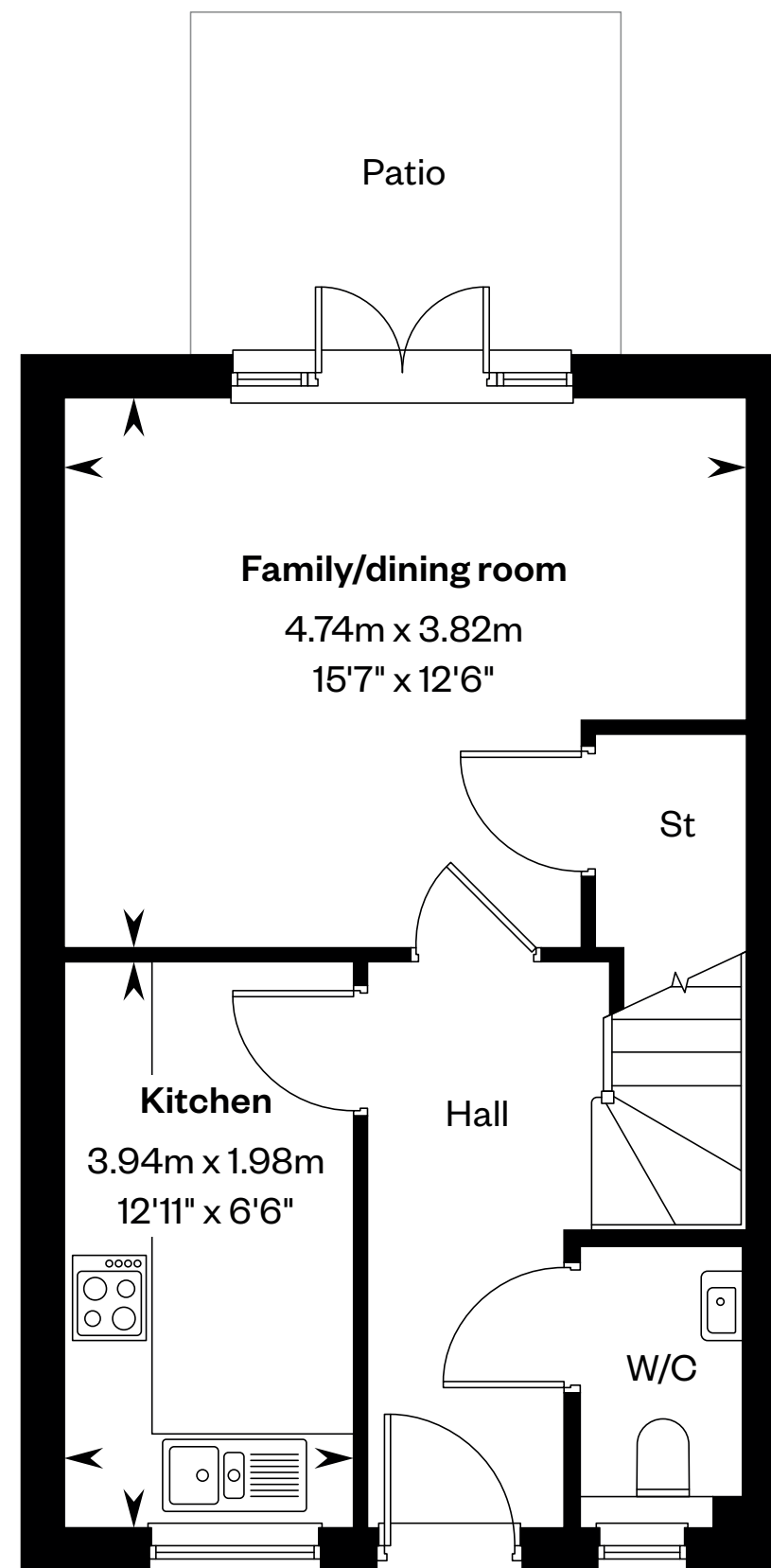
## 2 bedroom terraced home

Plots 35, 36, 37, 53, 84, 85, 86 & 87 – as shown

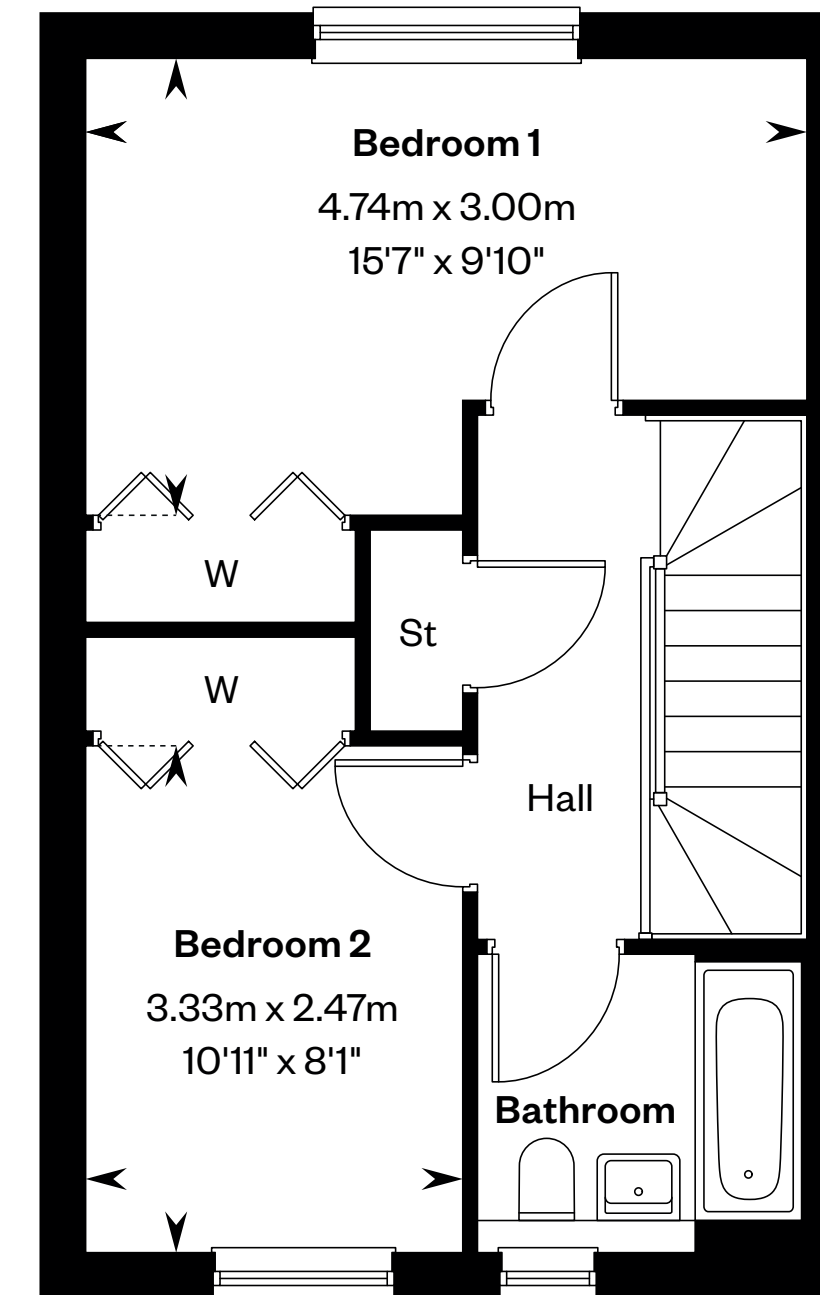
Plots 50, 51, 52, 88, 89, 90 & 91 – handed



This is a Predicted Energy Assessment for properties that are incomplete. Once the property is completed, this rating will be updated and an official Energy Performance Certificate will be created for the property.



Ground floor



First floor

Please ask your Sales Consultant for further details. ST: Store cupboard. W: Wardrobe.

IMPORTANT NOTICE TO CUSTOMERS: The Consumer Protection from Unfair Trading Regulations 2008. Cala Homes (East) Limited operates a policy of continual product development and the specifications outlined in this brochure are indicative only. The computer generated images and photographs do not necessarily represent the actual finishings/elevation or treatments, landscaping, furnishings and fittings at this development. Information contained is accurate at date of publication on 12.04.2024. See the main brochure for the full Consumer Protection statement.



# The Allan

3 bedroom terraced home



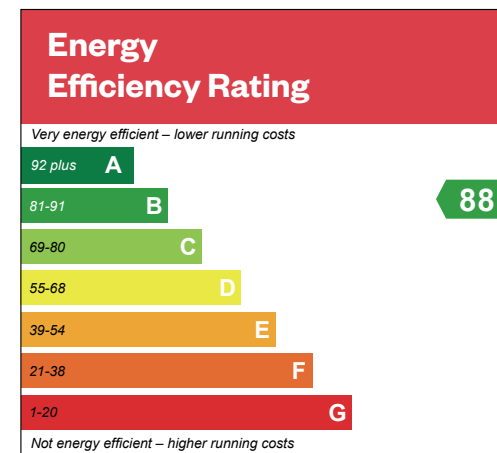
Computer Generated Image - Typical Allans



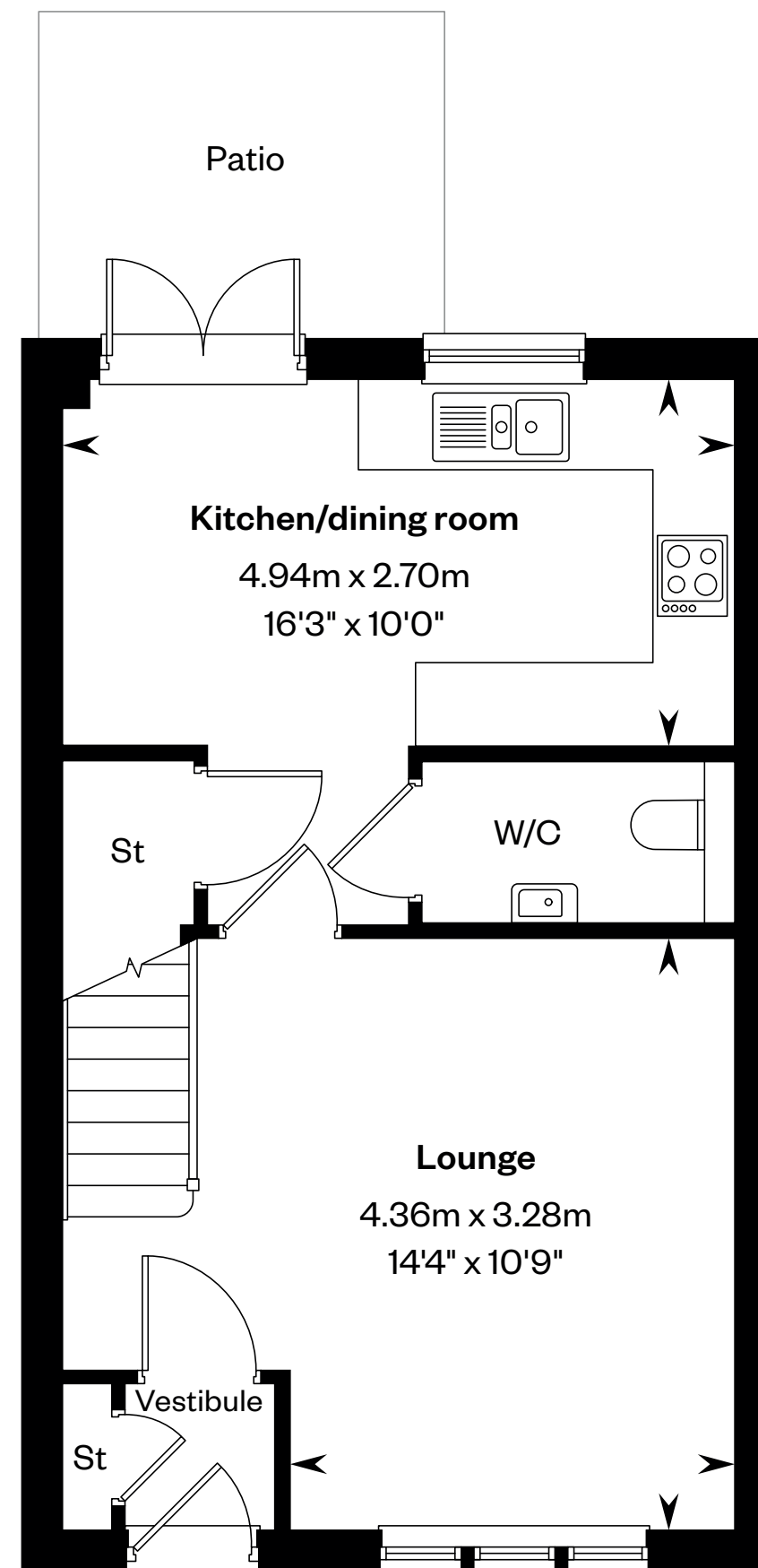
# The Allan

## 3 bedroom terraced home

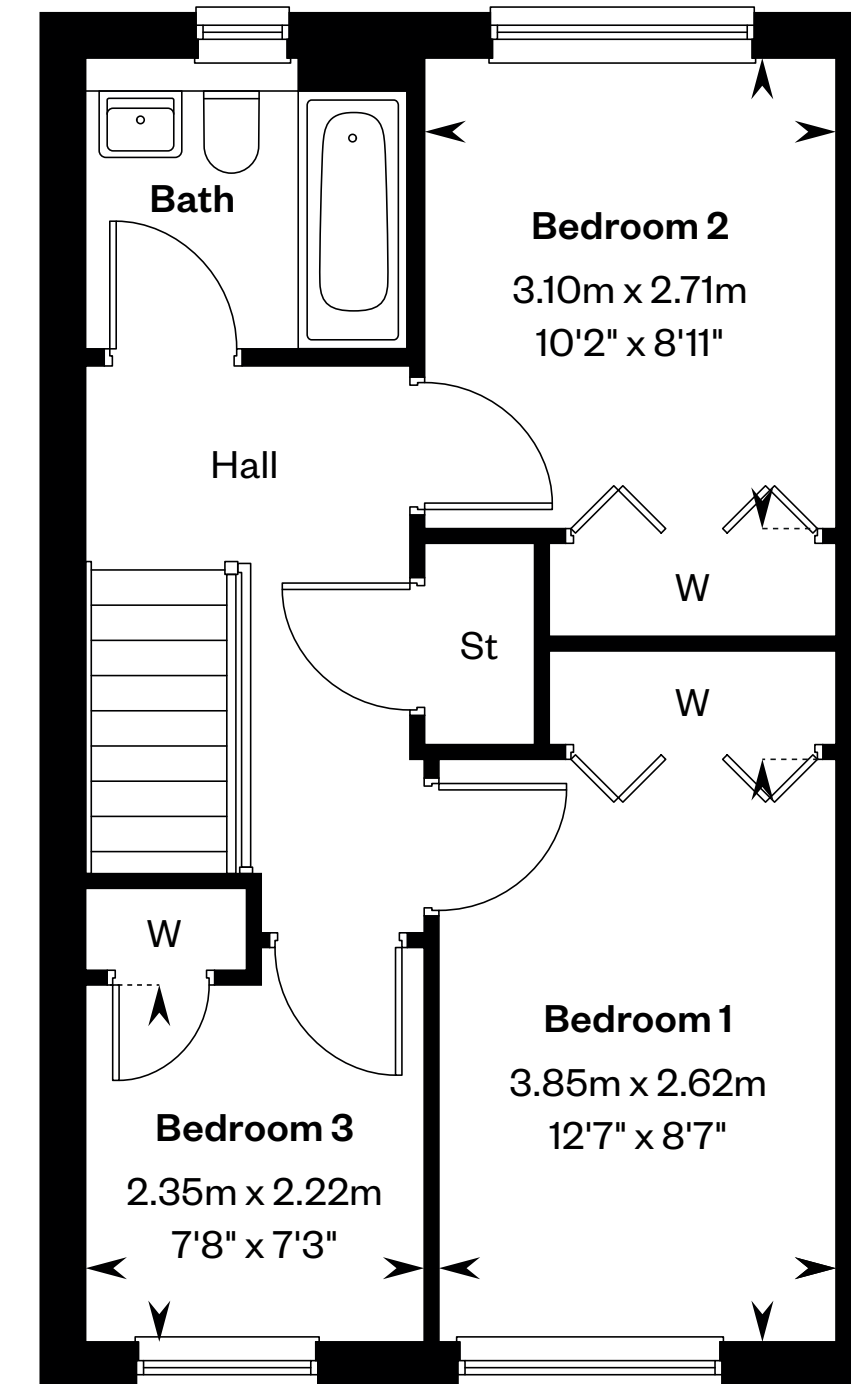
Plots 31, 78, 79 & 80 – handed



This is a Predicted Energy Assessment for properties that are incomplete. Once the property is completed, this rating will be updated and an official Energy Performance Certificate will be created for the property.



Ground floor



First floor

Please ask your Sales Consultant for further details. ST: Store cupboard. W: Wardrobe.

IMPORTANT NOTICE TO CUSTOMERS: The Consumer Protection from Unfair Trading Regulations 2008. Cala Homes (East) Limited operates a policy of continual product development and the specifications outlined in this brochure are indicative only. The computer generated images and photographs do not necessarily represent the actual finishings/elevation or treatments, landscaping, furnishings and fittings at this development. Information contained is accurate at date of publication on 12.04.2024. See the main brochure for the full Consumer Protection statement.



# The Arran

3 bedroom end terraced home



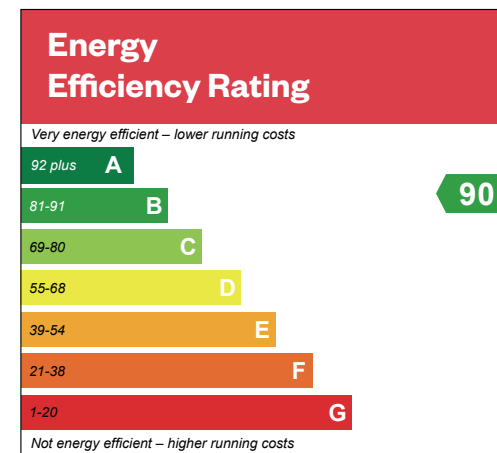


# The Arran

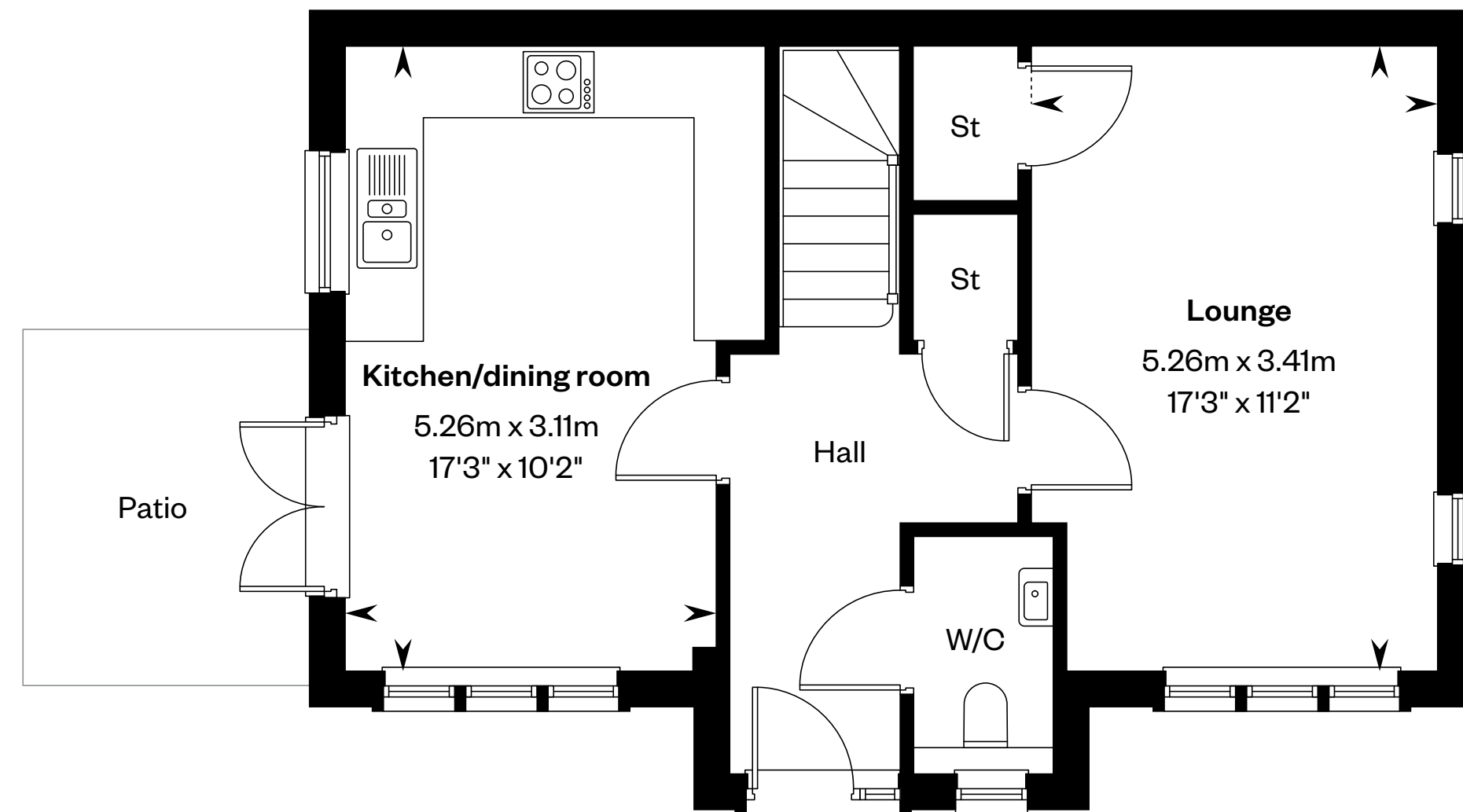
3 bedroom end terrace home

Plot 77 – as shown

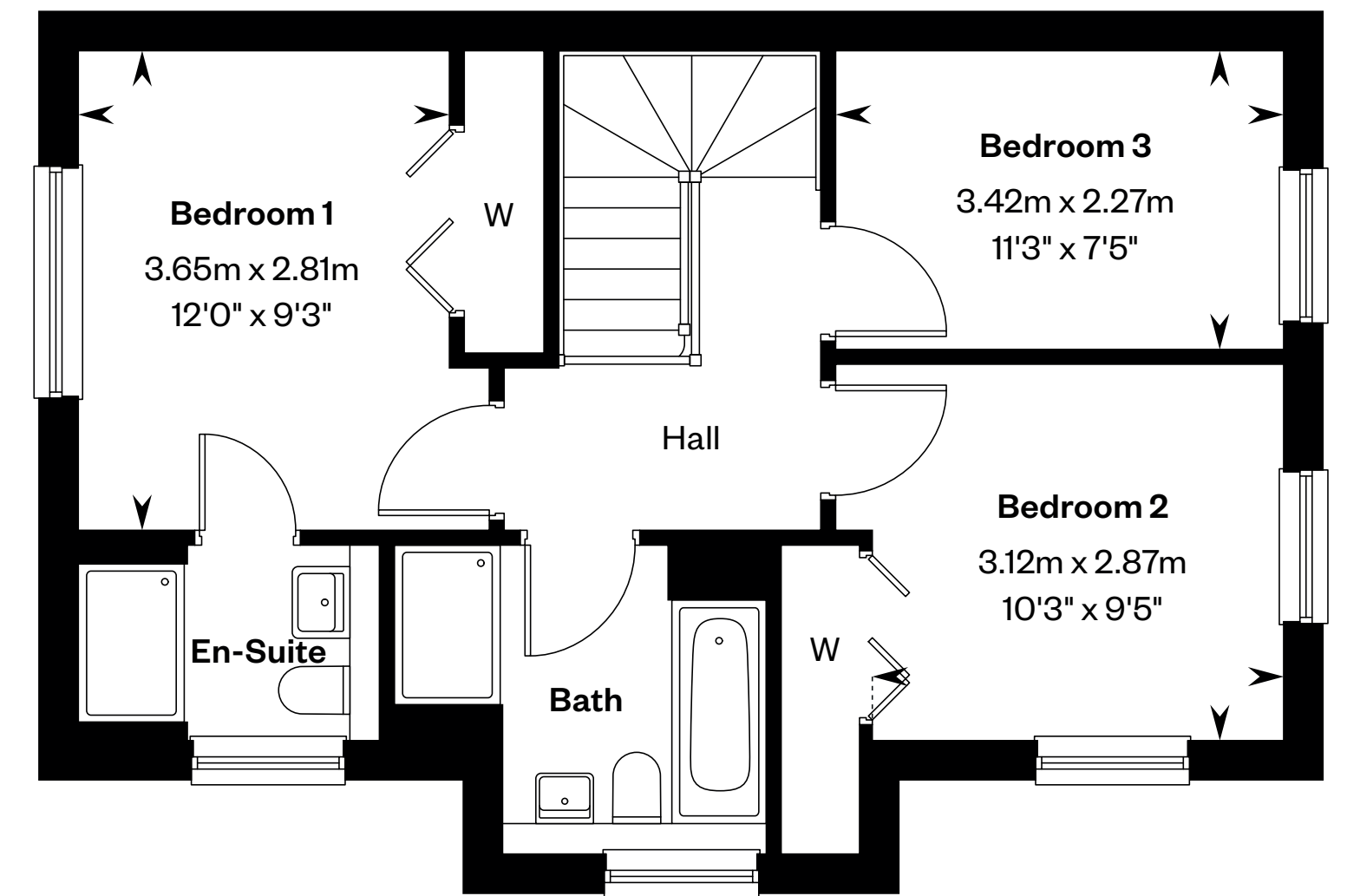
Plot 34 – handed



This is a Predicted Energy Assessment for properties that are incomplete. Once the property is completed, this rating will be updated and an official Energy Performance Certificate will be created for the property.



Ground floor



First floor

Please ask your Sales Consultant for further details. ST: Store cupboard. W: Wardrobe.

IMPORTANT NOTICE TO CUSTOMERS: The Consumer Protection from Unfair Trading Regulations 2008. Cala Homes (East) Limited operates a policy of continual product development and the specifications outlined in this brochure are indicative only. The computer generated images and photographs do not necessarily represent the actual finishings/elevation or treatments, landscaping, furnishings and fittings at this development. Information contained is accurate at date of publication on 12.04.2024. See the main brochure for the full Consumer Protection statement.



# The Balvenie

3 bedroom townhouse



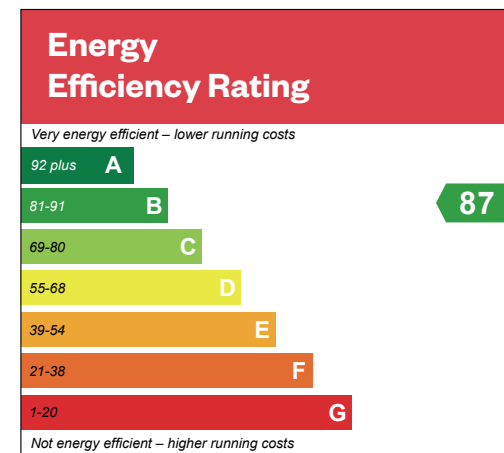


# The Balvenie

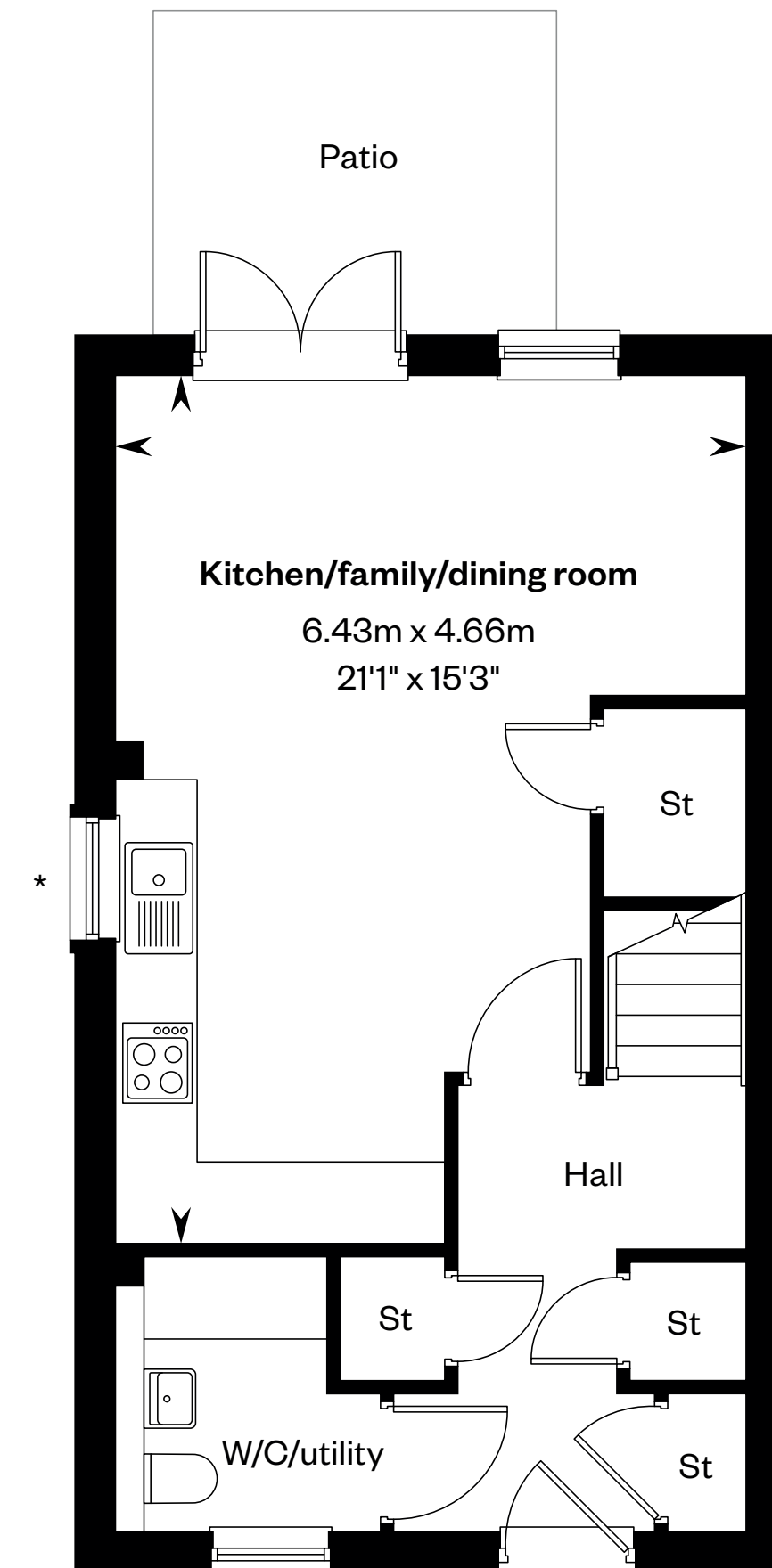
## 3 bedroom townhouse

Plots 2, 3, 9, 10, 40, 41, 48, 49 & 76 – as shown

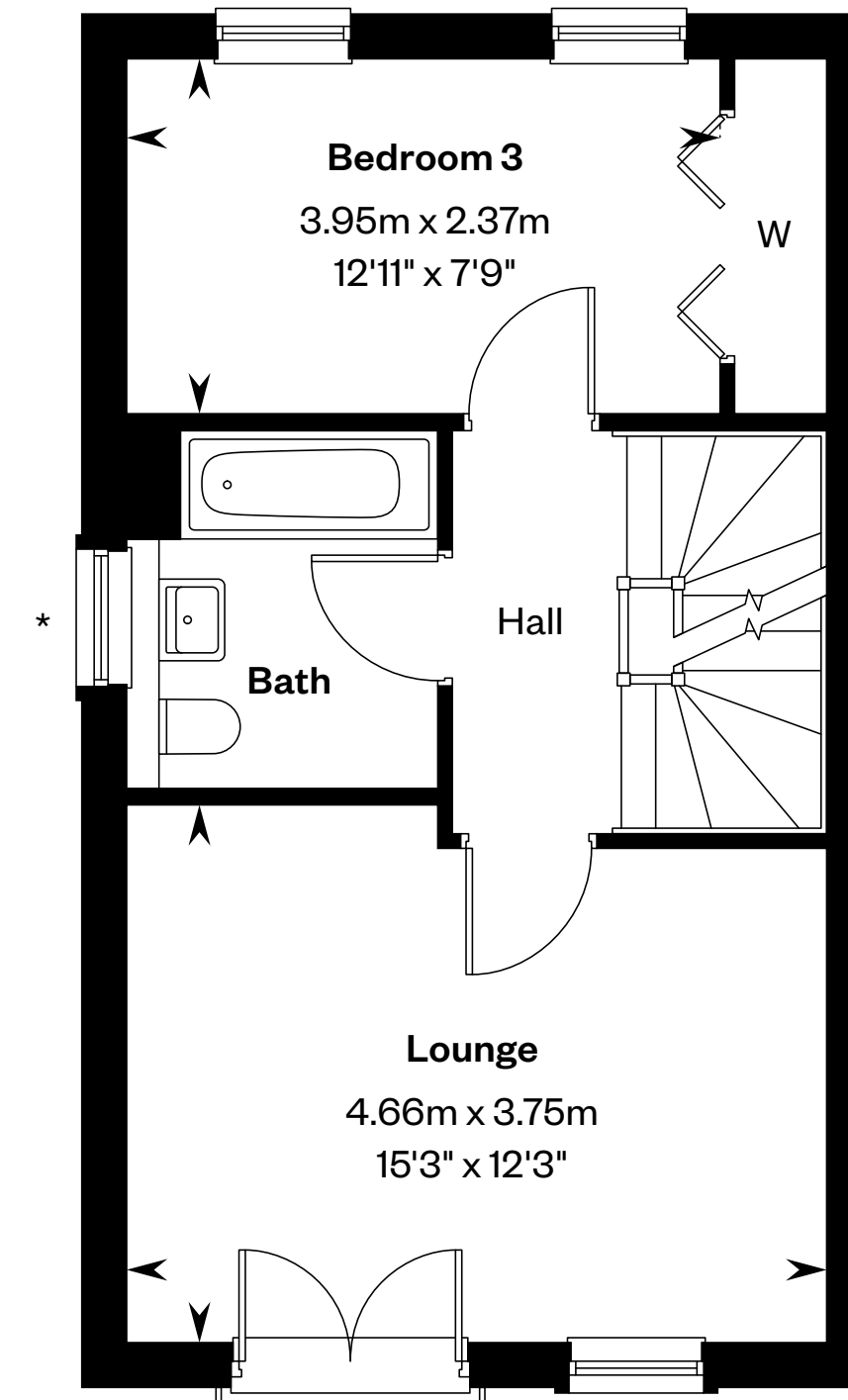
Plots 1, 7, 8, 38, 39, 46, 47, 74 & 75 – handed



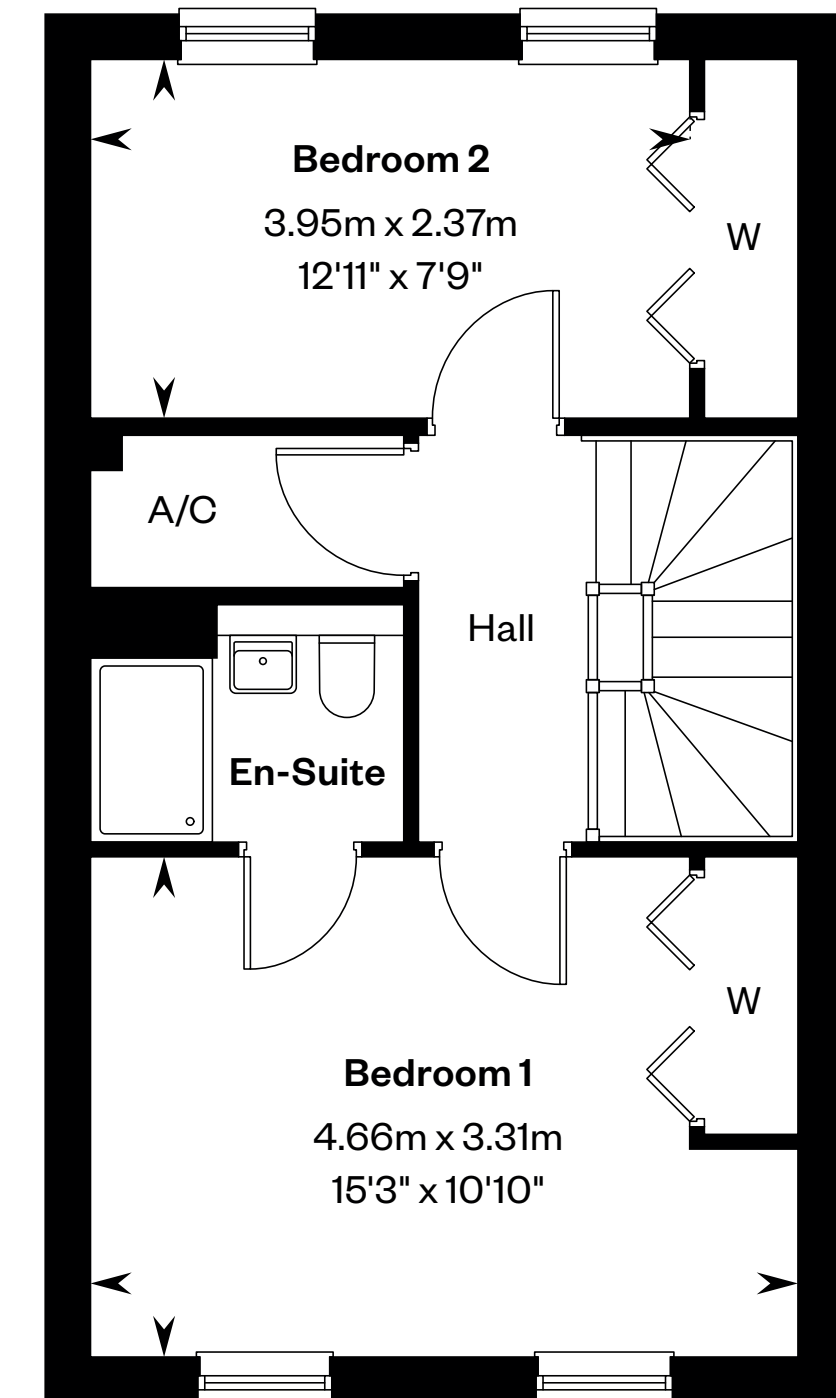
This is a Predicted Energy Assessment for properties that are incomplete. Once the property is completed, this rating will be updated and an official Energy Performance Certificate will be created for the property.



Ground floor



First floor



Second floor

Please ask your Sales Consultant for further details. \*Window to plots 1, 38 & 74 only. ST: Store cupboard. W: Wardrobe.

IMPORTANT NOTICE TO CUSTOMERS: The Consumer Protection from Unfair Trading Regulations 2008. Cala Homes (East) Limited operates a policy of continual product development and the specifications outlined in this brochure are indicative only. The computer generated images and photographs do not necessarily represent the actual finishings/elevation or treatments, landscaping, furnishings and fittings at this development. Information contained is accurate at date of publication on 12.04.2024. See the main brochure for the full Consumer Protection statement.



# The Buchanan

4 bedroom townhouse



Computer Generated Image - Typical Buchanans

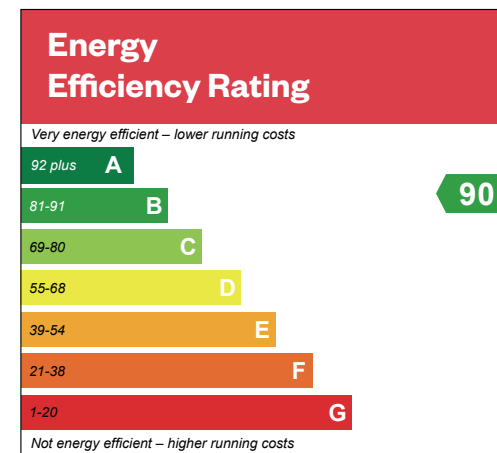


# The Buchanan

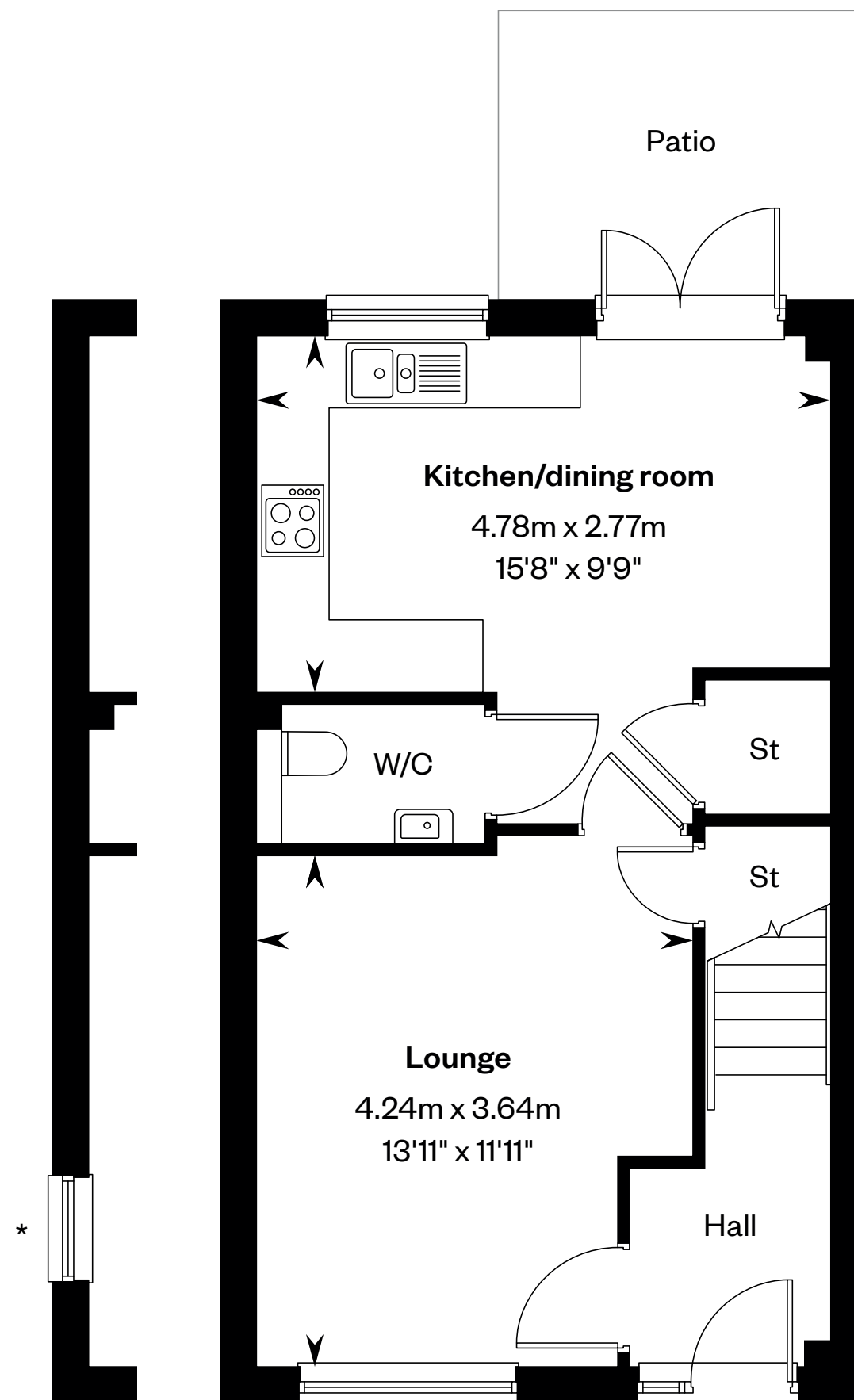
## 4 bedroom townhouse

Plots 6, 44, 45, 82 & 83 – as shown

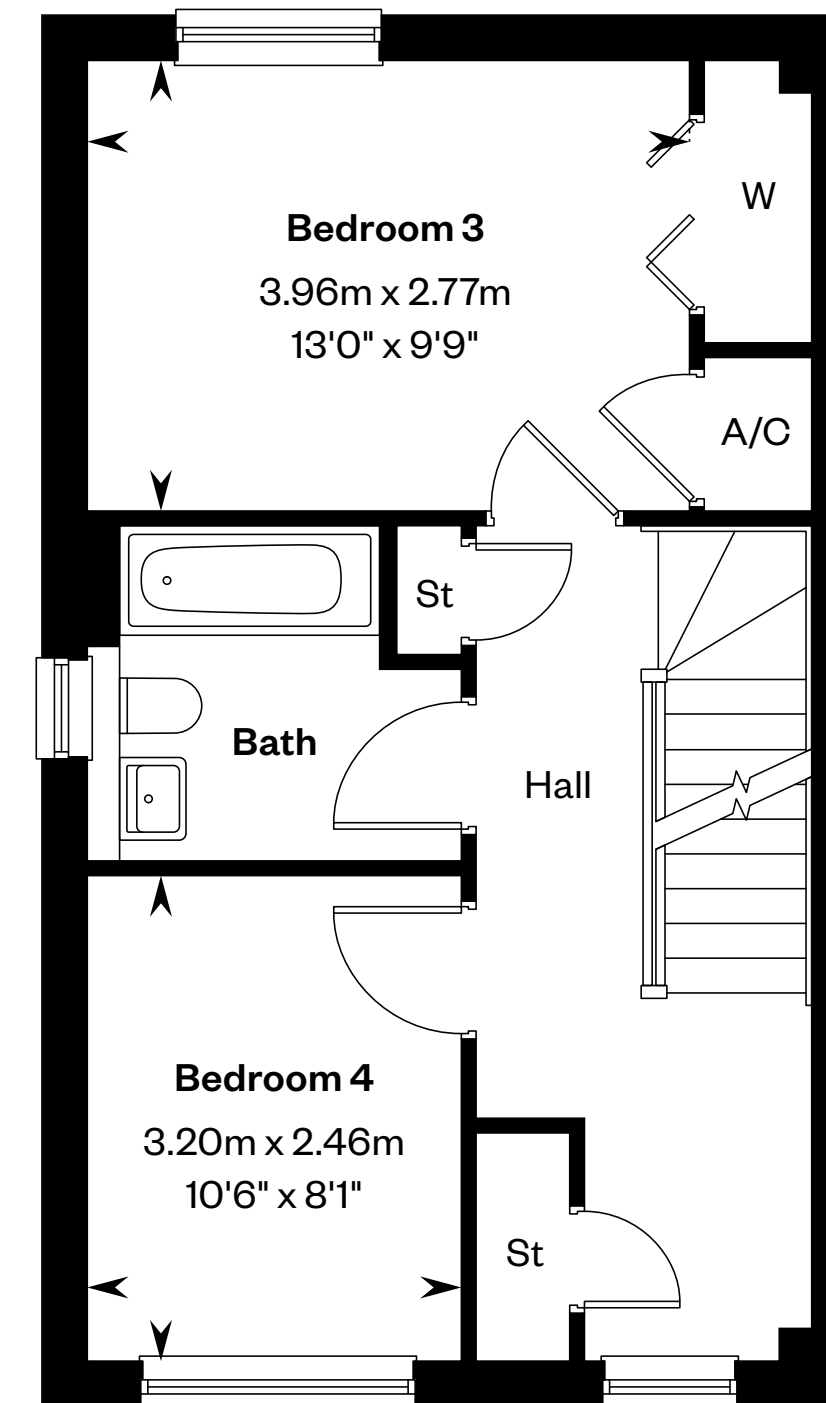
Plots 4, 5, 42, 43, 46 & 81 – handed



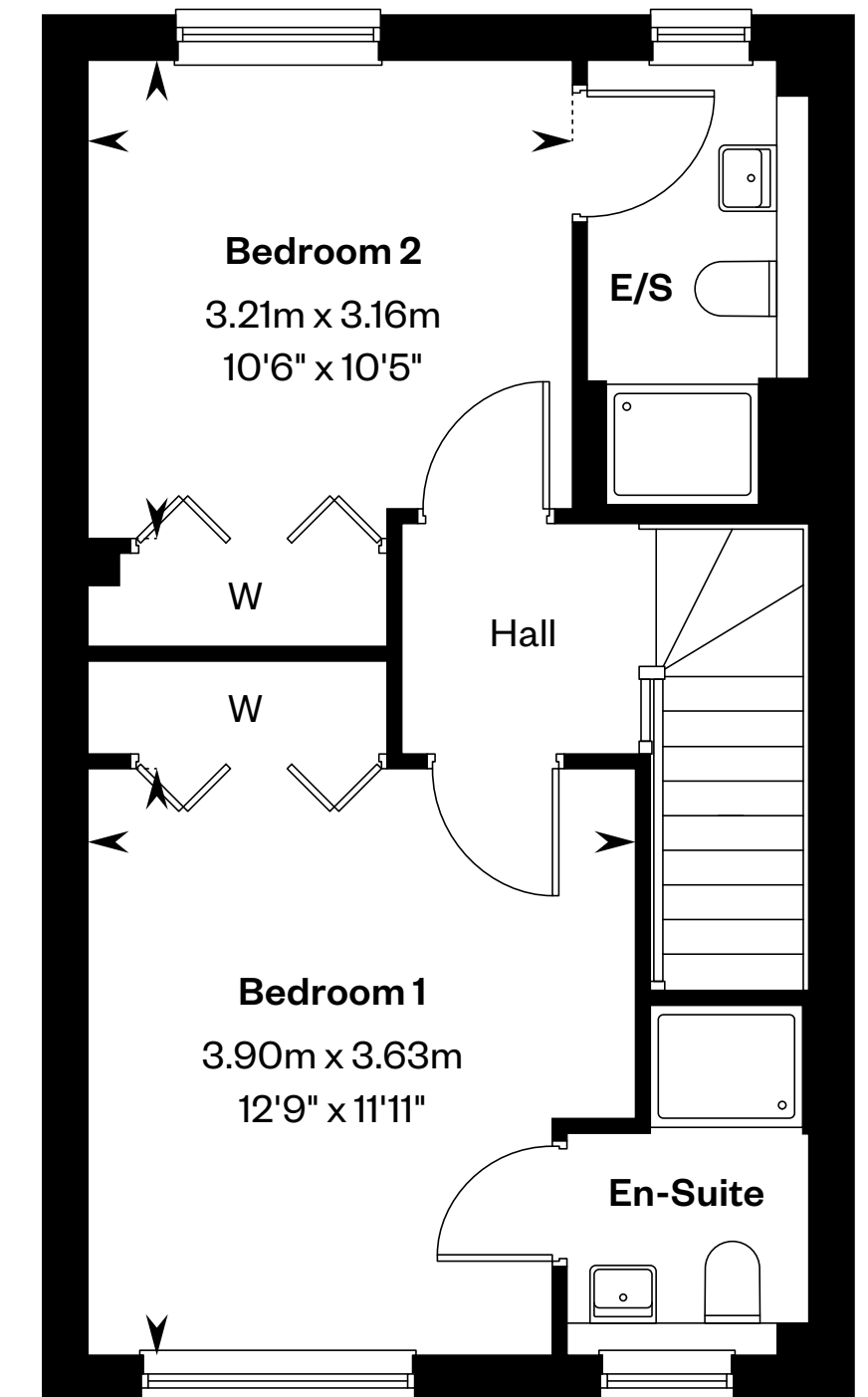
This is a Predicted Energy Assessment for properties that are incomplete. Once the property is completed, this rating will be updated and an official Energy Performance Certificate will be created for the property.



Ground floor



First floor



Second floor

Please ask your Sales Consultant for further details. \*Additional window to plot 83 only. Please speak to a sales advisor for plot specific details. ST: Store cupboard. W: Wardrobe.

IMPORTANT NOTICE TO CUSTOMERS: The Consumer Protection from Unfair Trading Regulations 2008. Cala Homes (East) Limited operates a policy of continual product development and the specifications outlined in this brochure are indicative only. The computer generated images and photographs do not necessarily represent the actual finishings/elevation or treatments, landscaping, furnishings and fittings at this development. Information contained is accurate at date of publication on 12.04.2024. See the main brochure for the full Consumer Protection statement.