



Capital homes

3 bedroom ground floor garden home & 2 bedroom plus study duplex homes

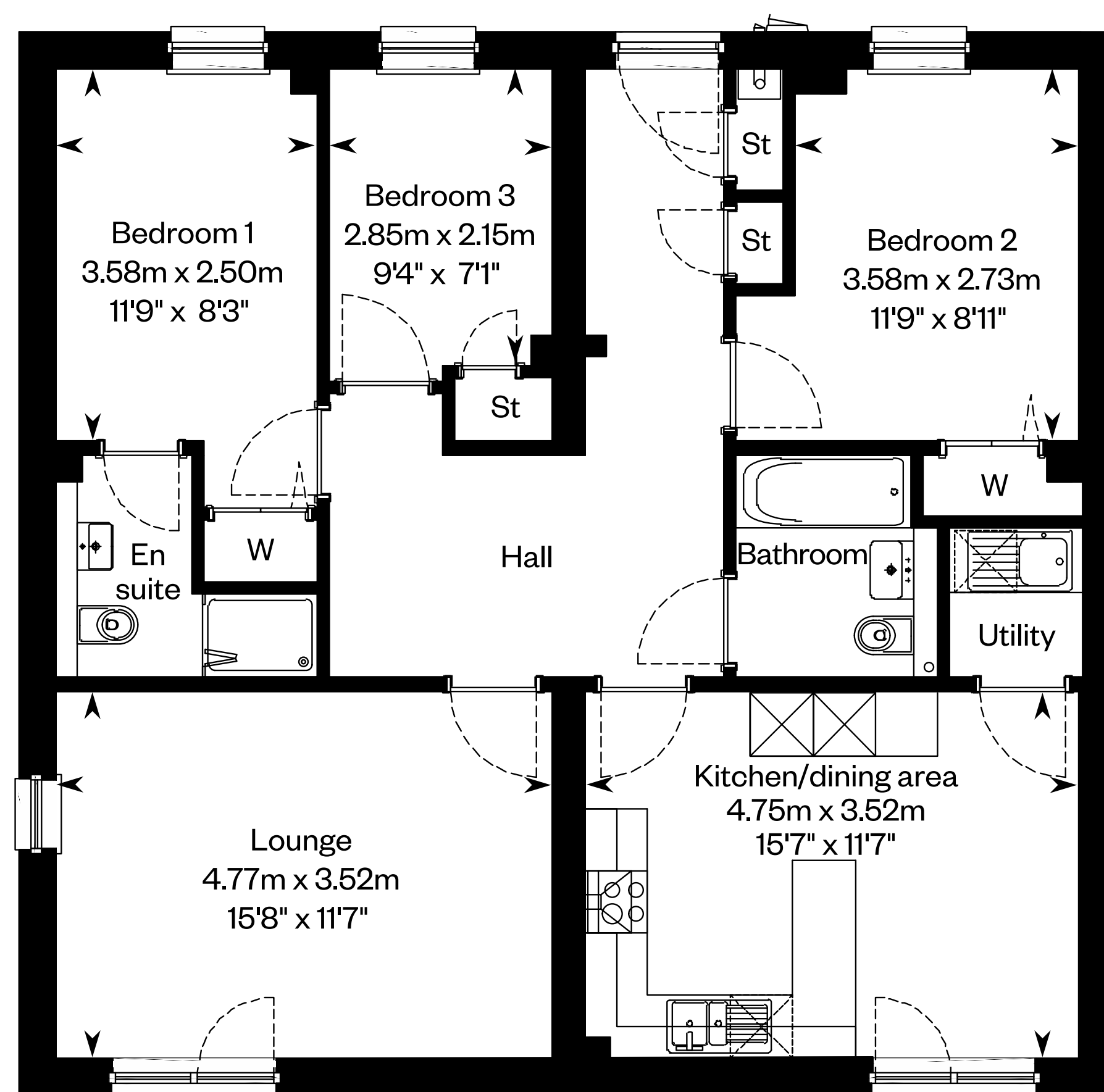


3 bedroom Capital garden home

Ground floor

Plots 13, 45, 63, 69, 70, 91, 99 & 100 – as shown

Plots 44, 62, 68, 89, 90 & 98 – handed



Ground floor home

Please note: Plots 13, 44, 45, 63, 68, 69, 90, 91, 98, 99 have a different window arrangement and do not have a side window in the lounge as shown above. Please ask your Sales Consultant for further details. ST: Store cupboard. W: Wardrobe.

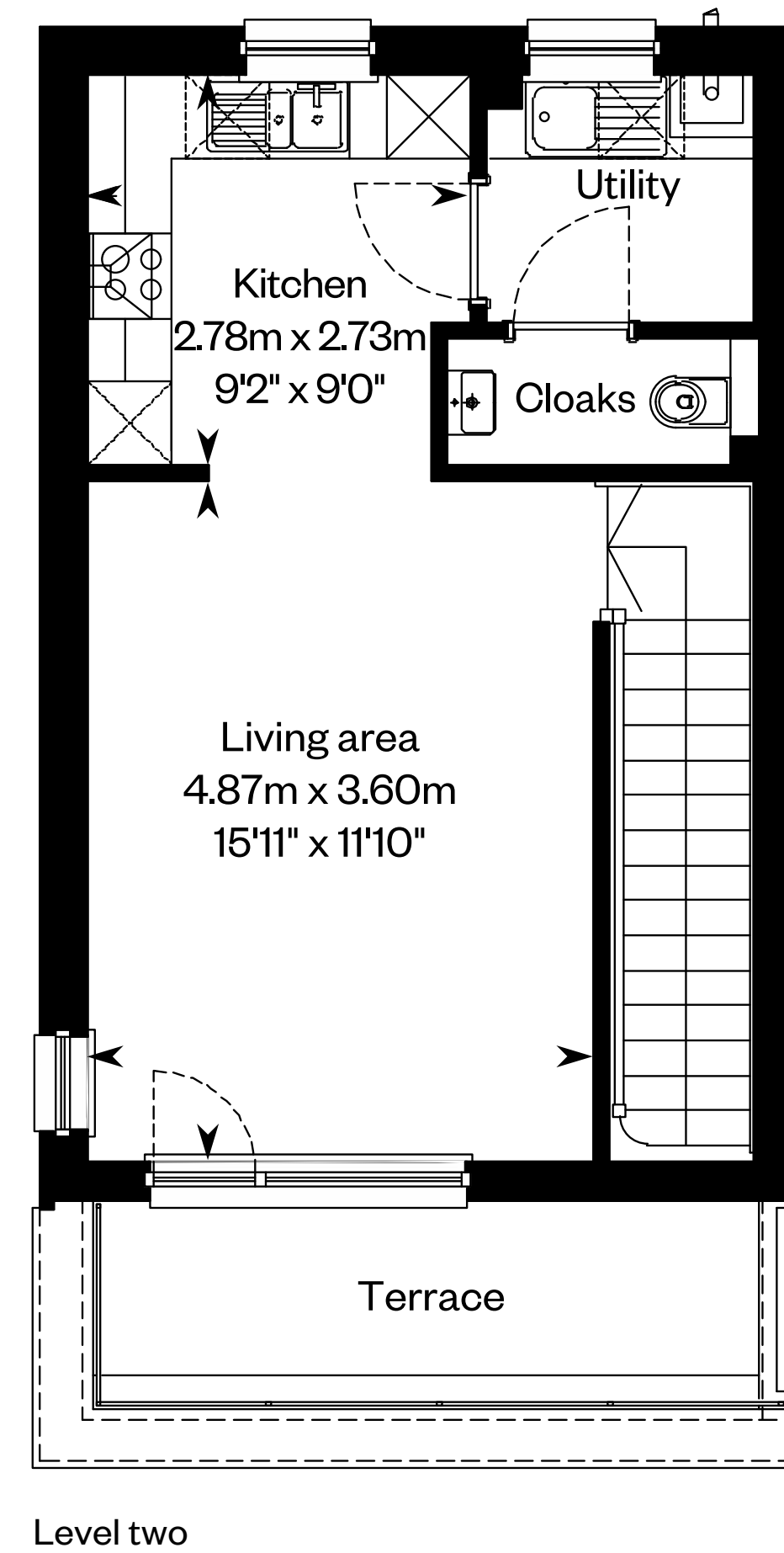
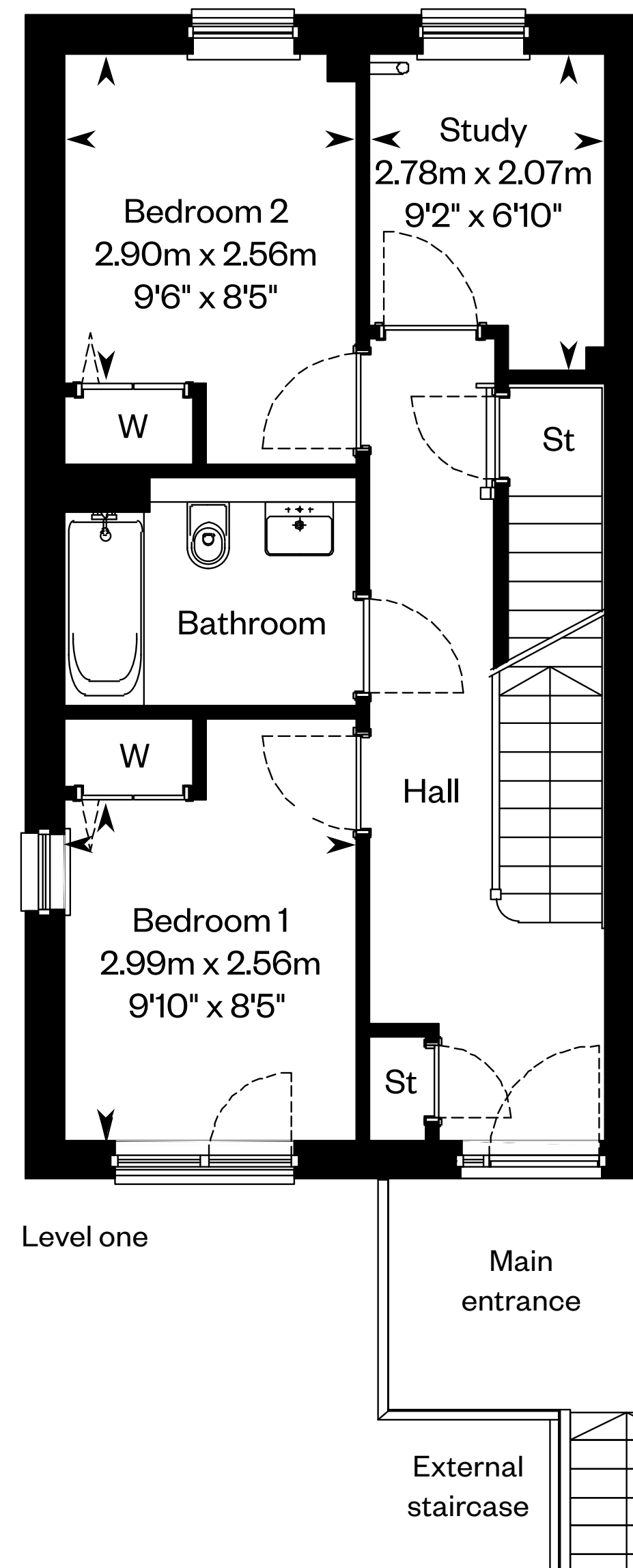
IMPORTANT NOTICE TO CUSTOMERS: The Consumer Protection from Unfair Trading Regulations 2008. Cala Homes (East) Limited operates a policy of continual product development and the specifications outlined in this brochure are indicative only. The computer generated images and photographs do not necessarily represent the actual finishings/elevation or treatments, landscaping, furnishings and fittings at this development. Information contained is accurate at date of publication October 2022. See the main brochure for the full Consumer Protection statement.

2 bedroom plus study Capital duplex home

End terraced home

Plots 14, 46, 64, 71, 92 & 101 – as shown

Plots 67, 76, 97 & 106 – handed



Please note: End terrace plots 14, 46, 64, 76, 92 & 106 have a different window configuration which is as per the mid terrace layout plan shown on the next page. Please ask your Sales Consultant for further details. ST: Store cupboard. W: Wardrobe.

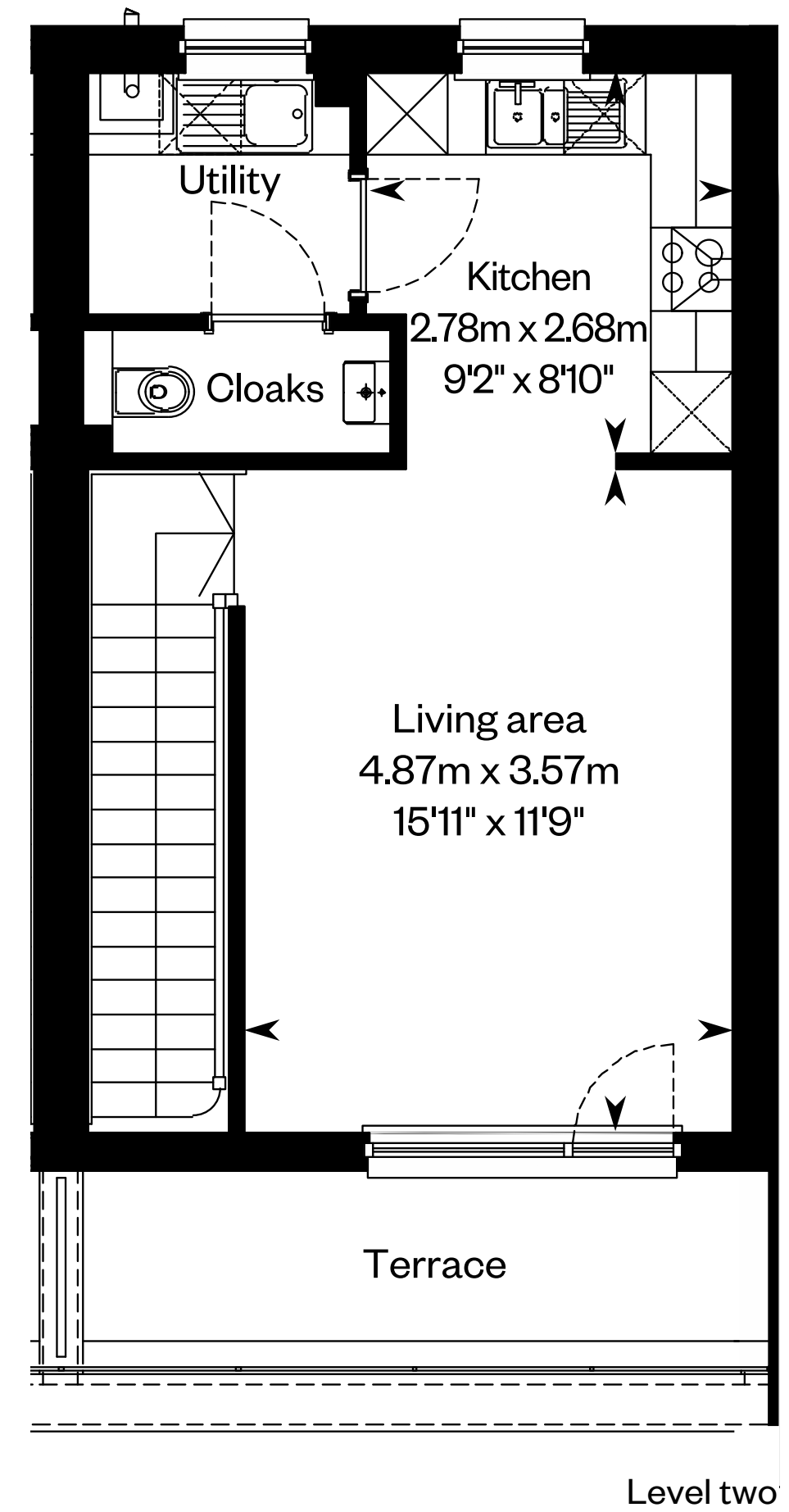
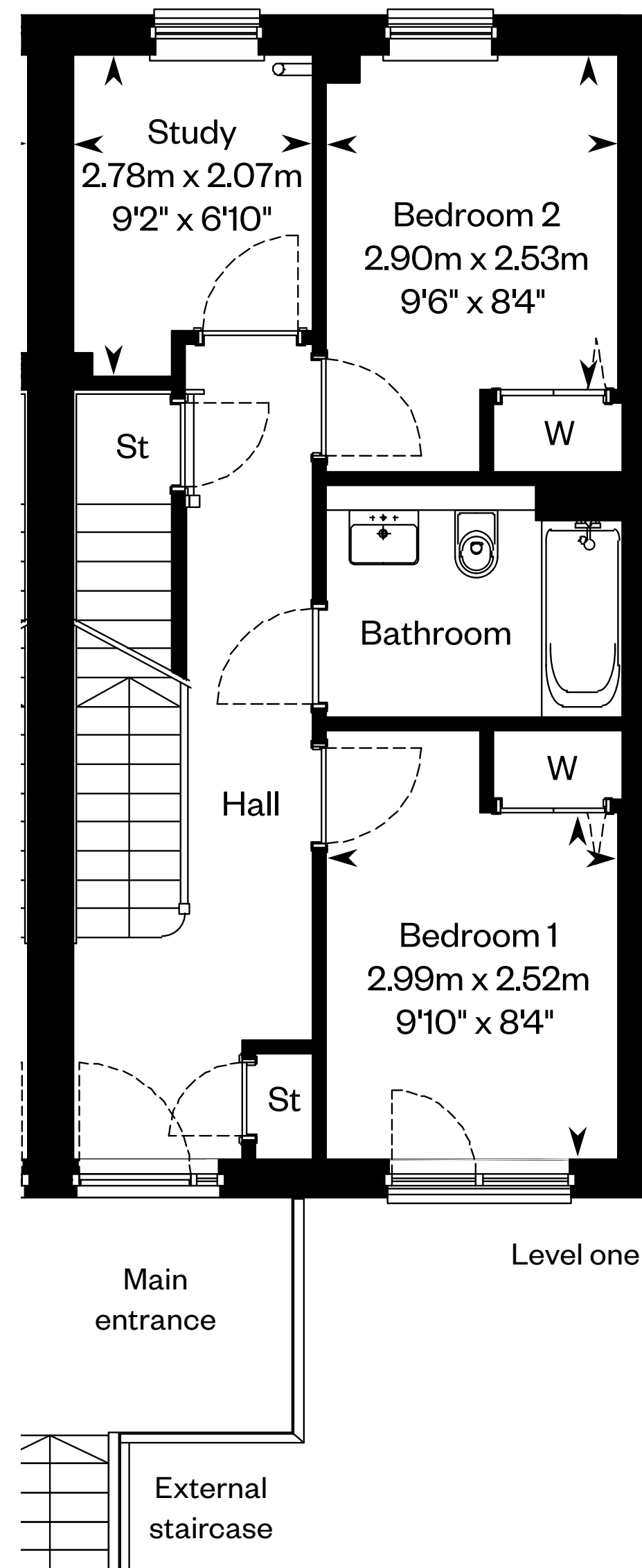
IMPORTANT NOTICE TO CUSTOMERS: The Consumer Protection from Unfair Trading Regulations 2008. Cala Homes (East) Limited operates a policy of continual product development and the specifications outlined in this brochure are indicative only. The computer generated images and photographs do not necessarily represent the actual finishings/elevation or treatments, landscaping, furnishings and fittings at this development. Information contained is accurate at date of publication October 2022. See the main brochure for the full Consumer Protection statement.

2 bedroom plus study Capital duplex home

Mid terraced home

Plots 15, 47, 65, 72, 74, 93, 95, 102 & 104 – as shown

Plots 48, 49, 66, 73, 75, 94, 96, 103 & 105 – handed



Please ask your Sales Consultant for further details. ST: Store cupboard. W: Wardrobe.

IMPORTANT NOTICE TO CUSTOMERS: The Consumer Protection from Unfair Trading Regulations 2008. Cala Homes (East) Limited operates a policy of continual product development and the specifications outlined in this brochure are indicative only. The computer generated images and photographs do not necessarily represent the actual finishings/elevation or treatments, landscaping, furnishings and fittings at this development. Information contained is accurate at date of publication October 2022. See the main brochure for the full Consumer Protection statement.