



Queensferry Heights

The Hurley Apartments

1 & 2 bedroom apartments



A breath of fresh air

Situated within walking distance of Port Edgar and with terrific views across the Firth of Forth, Queensferry Heights offers a superb location just one mile from the main street.

Whether you are in search of an easy commute to the capital or simply a move towards a more relaxed way of life, our selection of apartments is perfectly placed for the height of contemporary living.



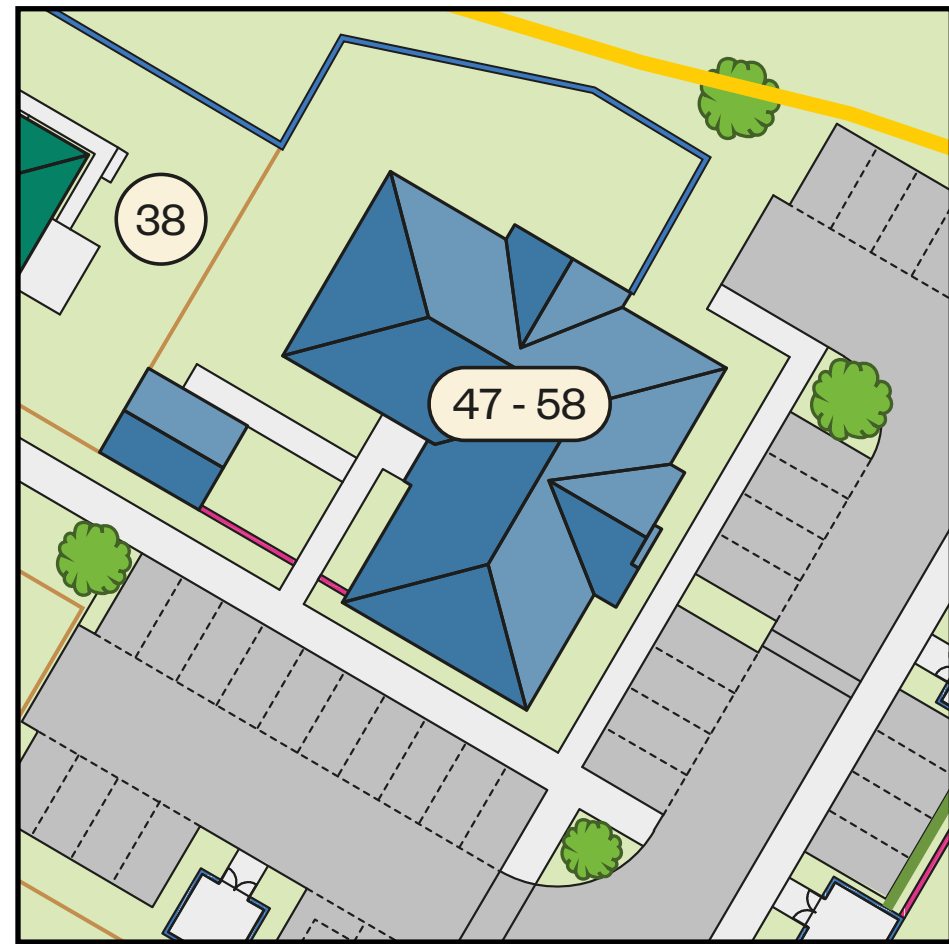
Homes built with you in mind

From the latest built-in kitchen appliances to stylish en suites, each property boasts light and spacious interiors with a high quality specification throughout. Our low maintenance apartments are ideal for first time buyers or downsizers alike.



Queensferry Heights

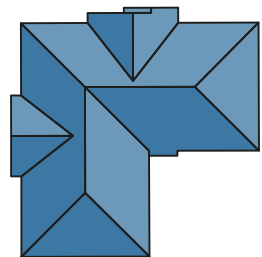
The Hurley Apartments



Computer generated image of The Hurley Apartments

The Hurley Apartments

Plots 47 - 58



The above development layout is not drawn to scale and is for general guidance only.
Road layouts, pathways and external treatments may differ. Landscaping is indicative only.
Please confirm the most up-to-date details with our sales consultants prior to reservation. V: Visitor parking space.

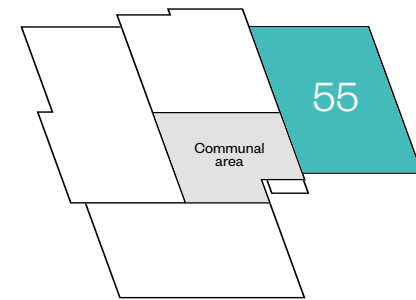
[Click here for current availability and prices](#)



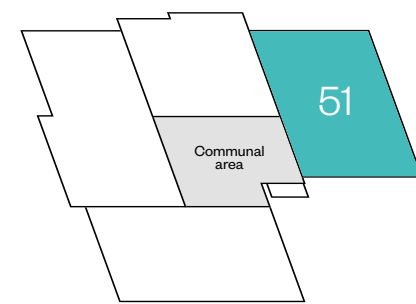
The Hurley Apartments

2 bedroom apartments

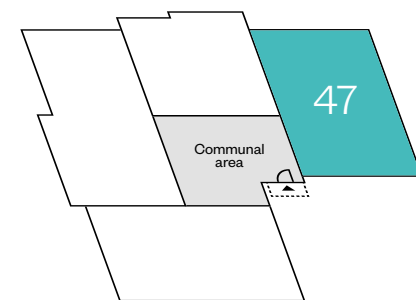
Plots 47, 51 & 55 – as shown



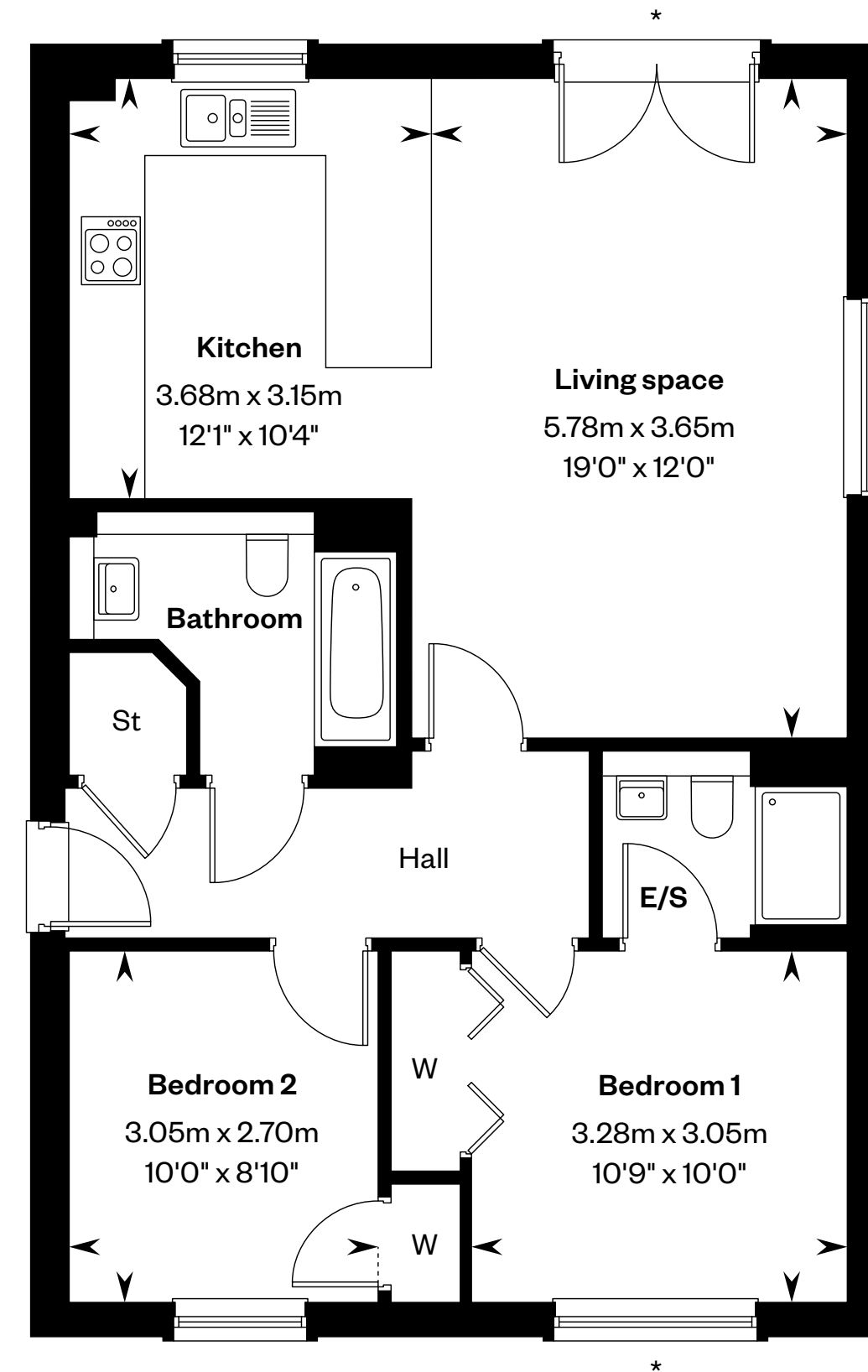
Second floor



First floor



Ground floor



*Juliet balcony to plots 51 & 55. Please ask your Sales Consultant for further details.

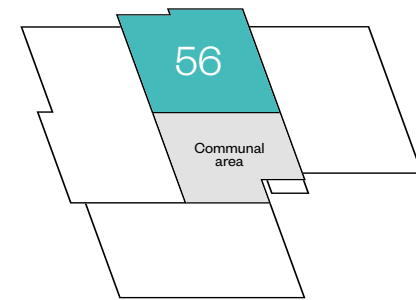
E/S: En-Suite. St: Store cupboard. W: Wardrobe.

IMPORTANT NOTICE TO CUSTOMERS: The Consumer Protection from Unfair Trading Regulations 2008. Cala Homes (East) Limited operates a policy of continual product development and the specifications outlined in this brochure are indicative only. The computer generated images and photographs do not necessarily represent the actual finishings/elevation or treatments, landscaping, furnishings and fittings at this development. Information contained is accurate at date of publication on 28.03.2025. See the main brochure for the full Consumer Protection statement.

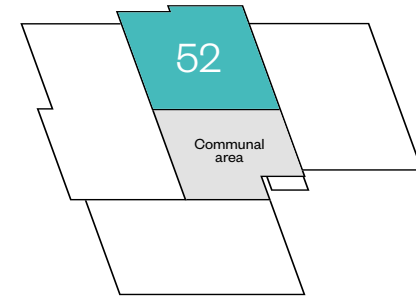
The Hurley Apartments

1 bedroom apartments

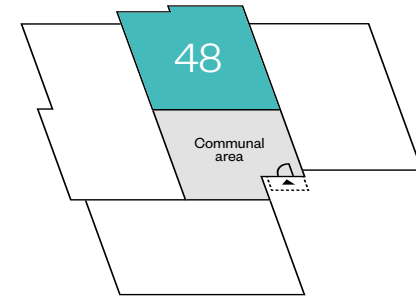
Plots 48, 52 & 56 – as shown



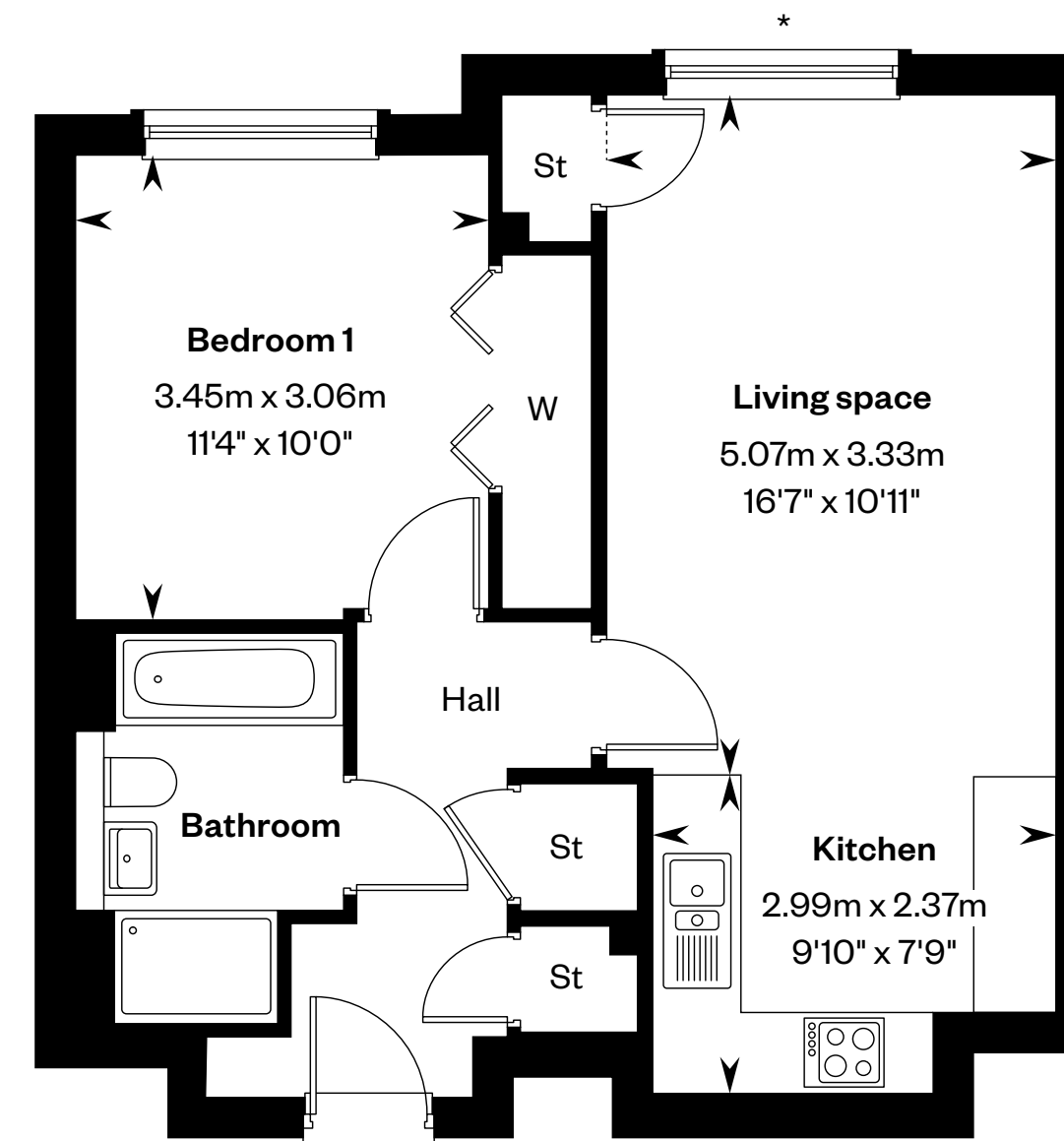
Second floor



First floor



Ground floor



*Juliet balcony to plots 52 & 56. Please ask your Sales Consultant for further details.

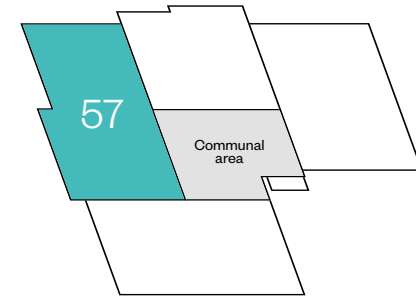
St: Store cupboard. W: Wardrobe.

IMPORTANT NOTICE TO CUSTOMERS: The Consumer Protection from Unfair Trading Regulations 2008. Cala Homes (East) Limited operates a policy of continual product development and the specifications outlined in this brochure are indicative only. The computer generated images and photographs do not necessarily represent the actual finishings/elevation or treatments, landscaping, furnishings and fittings at this development. Information contained is accurate at date of publication on 28.03.2025. See the main brochure for the full Consumer Protection statement.

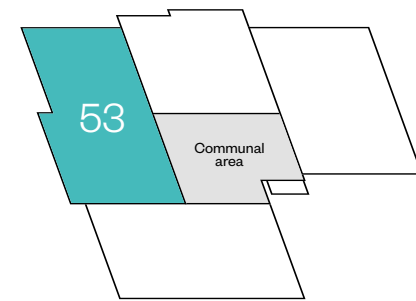
The Hurley Apartments

2 bedroom apartments

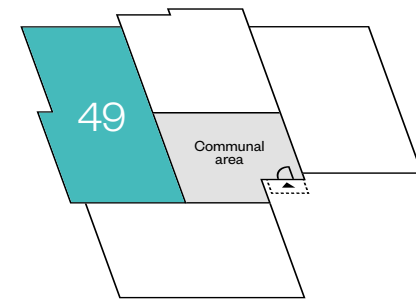
Plots 49, 53 & 57 – as shown



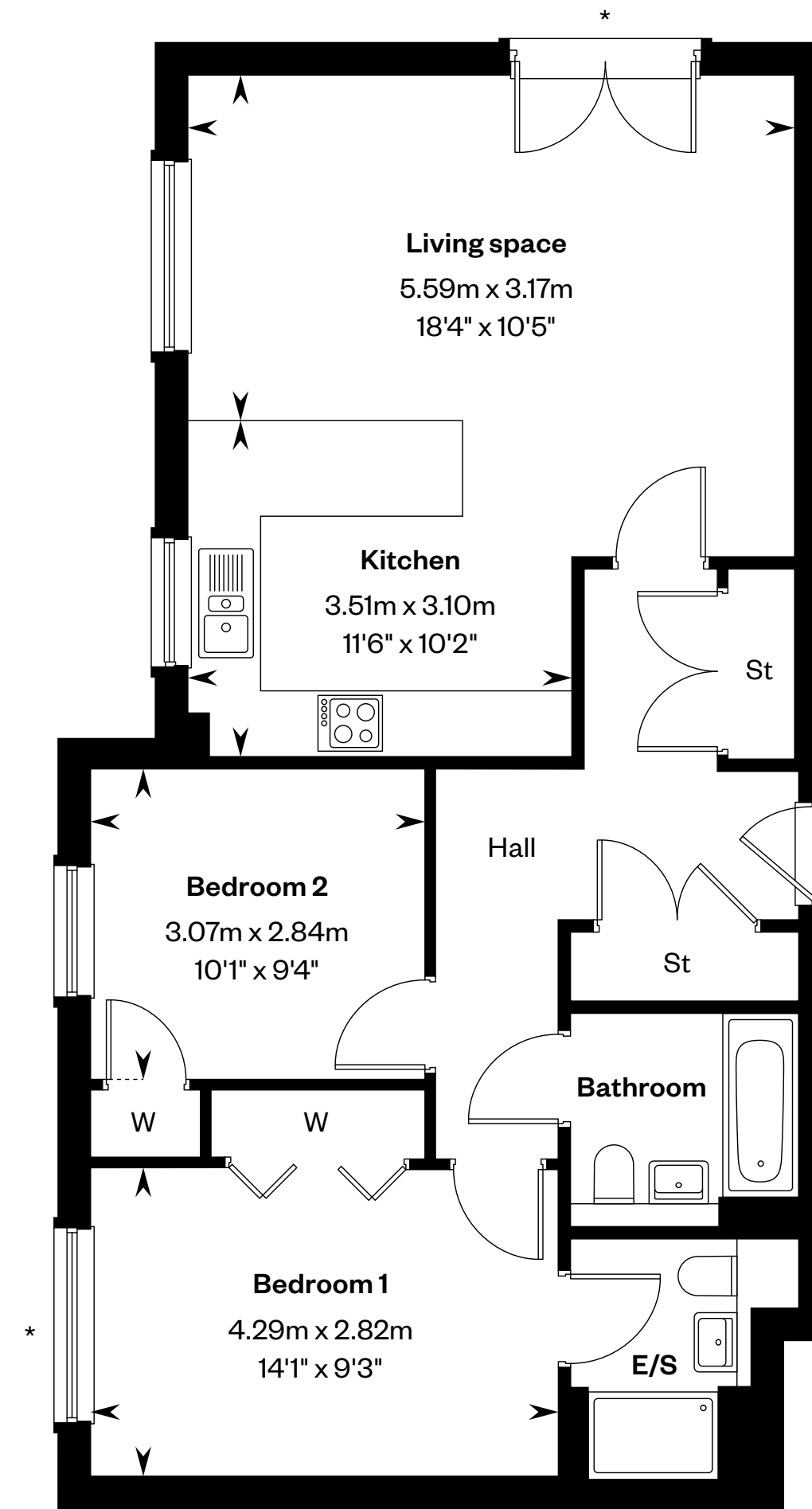
Second floor



First floor



Ground floor



* Juliet balcony to plots 53 & 57. Please ask your Sales Consultant for further details.

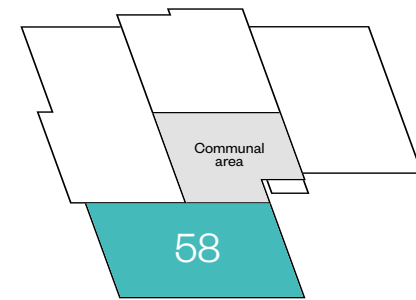
E/S: En-Suite. St: Store cupboard. W: Wardrobe.

IMPORTANT NOTICE TO CUSTOMERS: The Consumer Protection from Unfair Trading Regulations 2008. Cala Homes (East) Limited operates a policy of continual product development and the specifications outlined in this brochure are indicative only. The computer generated images and photographs do not necessarily represent the actual finishings/elevation or treatments, landscaping, furnishings and fittings at this development. Information contained is accurate at date of publication on 28.03.2025. See the main brochure for the full Consumer Protection statement.

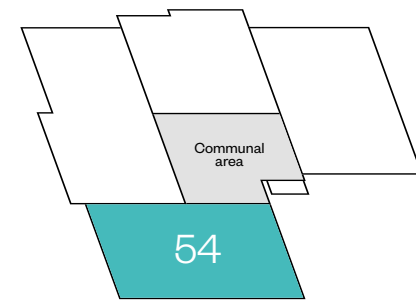
The Hurley Apartments

2 bedroom apartments

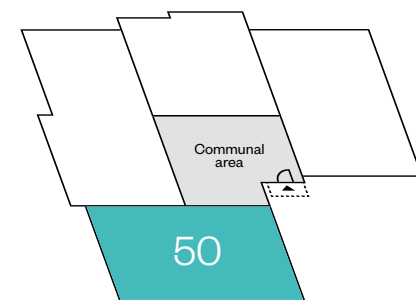
Plots 50, 54 & 58 – as shown



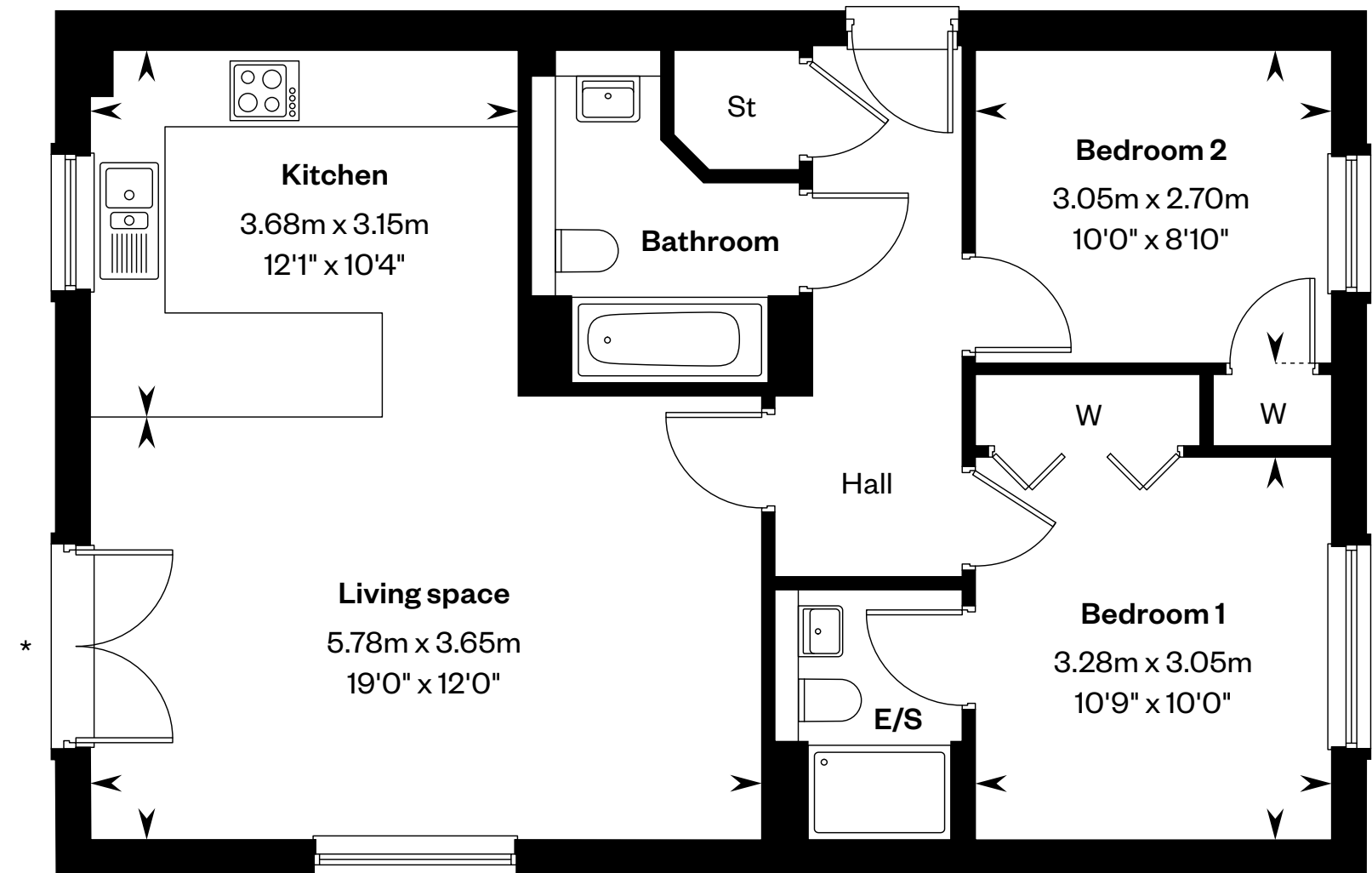
Second floor



First floor



Ground floor



*Juliet balcony to plots 54 & 58. Please ask your Sales Consultant for further details.

E/S: En-Suite. St: Store cupboard. W: Wardrobe.

IMPORTANT NOTICE TO CUSTOMERS: The Consumer Protection from Unfair Trading Regulations 2008. Cala Homes (East) Limited operates a policy of continual product development and the specifications outlined in this brochure are indicative only. The computer generated images and photographs do not necessarily represent the actual finishings/elevation or treatments, landscaping, furnishings and fittings at this development. Information contained is accurate at date of publication on 28.03.2025. See the main brochure for the full Consumer Protection statement.



Queensferry Heights

Apartment specification





Photography from a previous Cala development



Desirable in every detail

The finishing touches, unexpected flourishes and innovative features. Designer kitchens with desirable technology built-in, for showing off your culinary flair. Sleek bathrooms and en suites with high specification sanitaryware, for indulging in some well-deserved pampering.

With every home comfort considered for energy-efficient and low maintenance living, every aspect of your apartment is beautifully designed and built to an exacting standard; because when you look for quality, it's the little things that make all the difference.

Queensferry Heights

Apartments specification

Kitchen

- Stylish studio designed kitchen
- Metallic telescopic cooker hood
- Bosch induction hob
- Bosch integrated fridge/freezer
- Bosch integrated dishwasher
- Bosch stainless steel electric oven
- Bosch washer dryer (as design dictates)
- 1½ bowl granite sink and drainer in kitchen

Bathrooms & en suites

- White Laufen Pro WC and wash basin
- White Carron bath
- Vado Life taps and bath mixer
- Vado thermostatic showers to en suites
- Chrome finished shower enclosures
- Thermostatic combined bath filler and handheld spray set (as design dictates)
- Chrome towel warmers (as design dictates)
- Choice of wall tiling from Porcelanosa ranges*
- Soft close toilet seats

Decoration

- Internal walls will be finished in white emulsion
- Ceilings will be finished in white emulsion
- White satin finish to skirtings and facings
- White satin finish to internal pass doors
- French doors to balcony/terrace (as design dictates)
- Contemporary lever style door handles

Wardrobe

- Bi-fold doors to bedrooms (as design dictates)

Electrical

- Pendant to kitchen, bathroom and en suites (as design dictates)
- Low energy pendant light fitting to all other rooms
- Low energy external light fitting provided to external doors
- Shaver socket (as design dictates)
- TV/data distribution points
- Multigrid switching of kitchen appliances
- Double socket with integral USB power slots to kitchen and master bedroom (as design dictates)

Security & safety

- Mains-wired smoke detectors
- Heat detector in kitchen
- Battery-operated Carbon Monoxide detectors
- Mains operated Carbon Dioxide monitor to master bedroom
- Communal entrance point to stairwells fitted with fob-operated multi-point locking device
- Door entry system
- Burglar alarm fitted to all ground floor and lower ground floor apartments

Plumbing & heating

- Central heating via a high efficiency gas boiler heating system
- Thermostatic heating controls

Externals

- uPVC double-glazed windows
- A factoring company will be appointed to maintain all common areas with an annual fee payable by residents
- Apartment blocks feature composite apartment entrance doors with 3-point locking system



Queensferry Heights,
Bo'ness Road,
South Queensferry,
EH30 9DZ

For more information 

CALA.CO.UK



Stock photography