



# The Adam

2 bedroom mid-terraced home



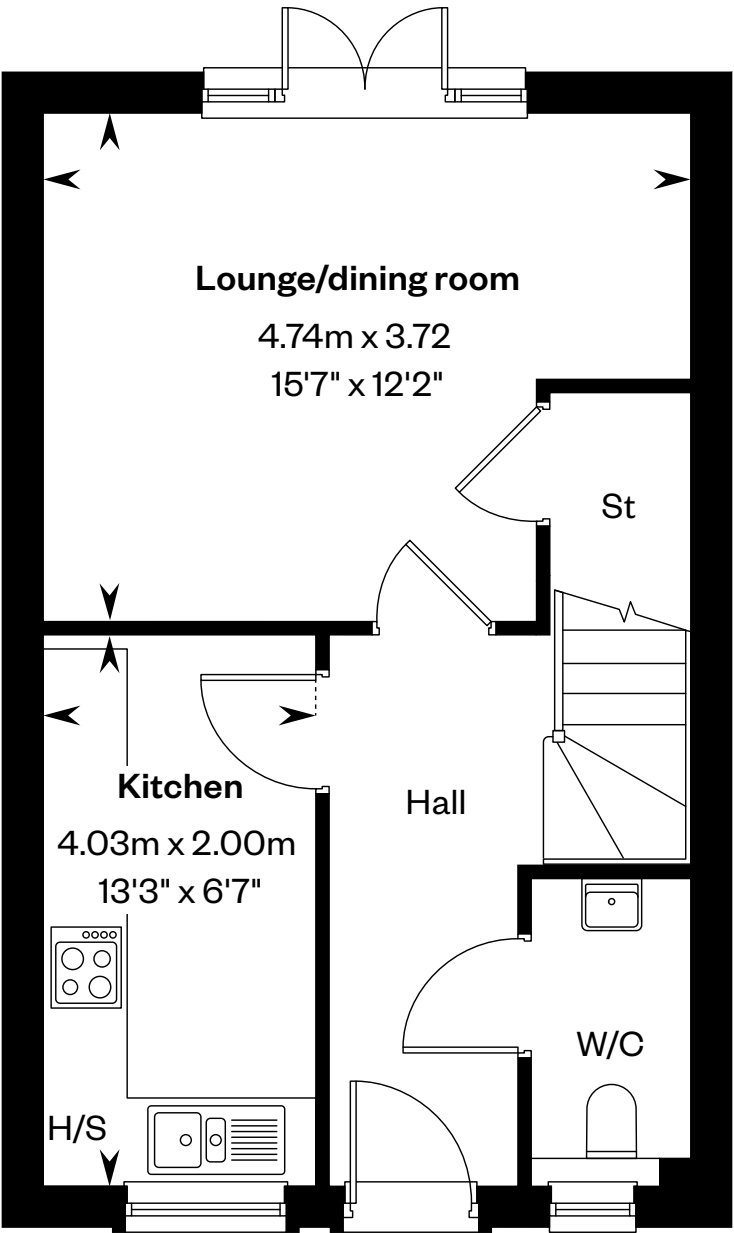
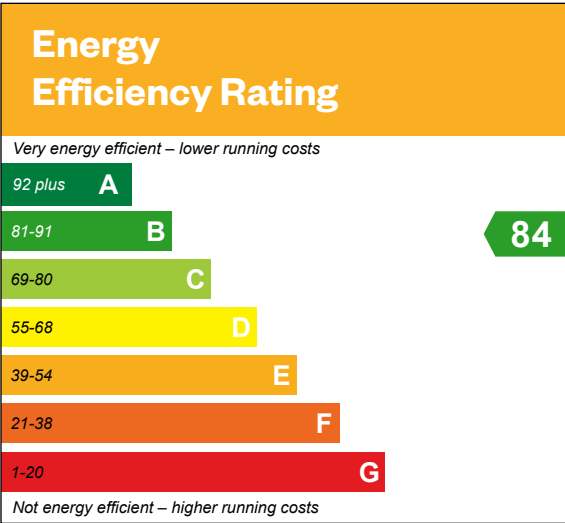
Computer Generated Image - The Adam

# The Adam

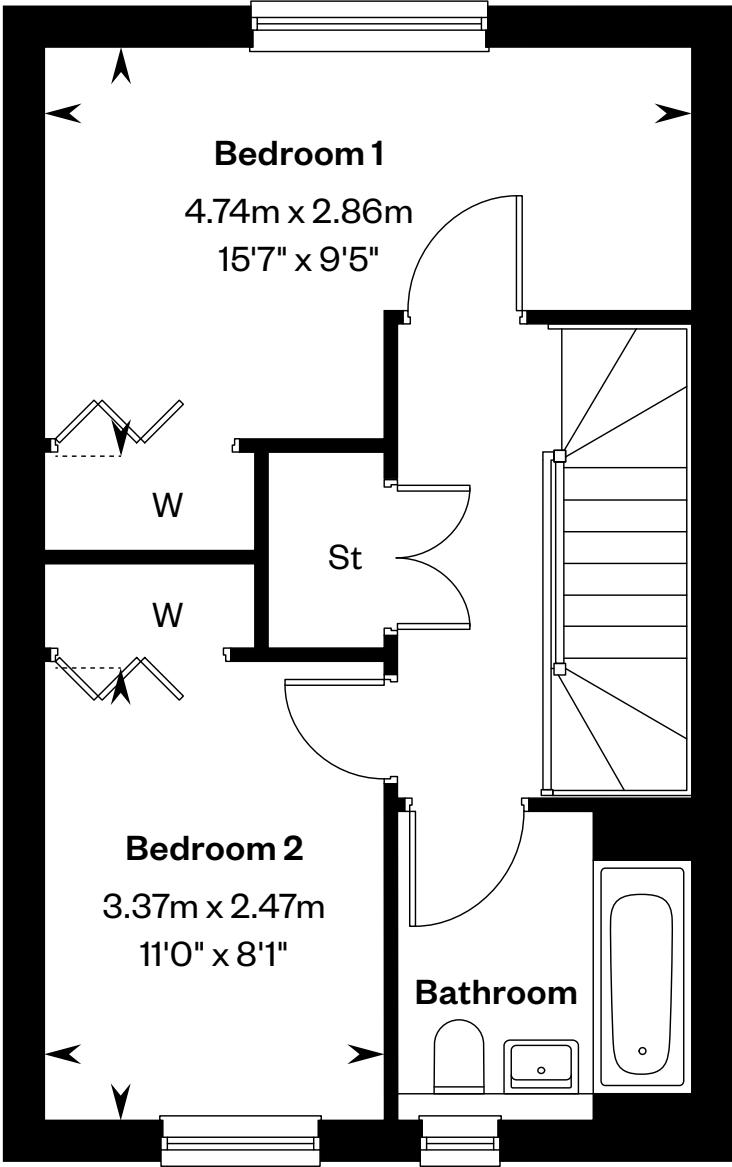
## 2 bedroom mid-terraced home

Plot 24 – as shown

Plot 25 – handed



Ground floor



First floor

H/S: Heating source cupboard. St: Store cupboard. W: Wardrobe.

IMPORTANT NOTICE TO CUSTOMERS: The Consumer Protection from Unfair Trading Regulations 2008. Cala Homes (West) Limited operates a policy of continual product development and the specifications outlined in this brochure are indicative only. The computer generated images and photographs do not necessarily represent the actual finishings/elevation or treatments, landscaping, furnishings and fittings at this development. Information contained is accurate at date of publication on 29.07.25. See the main brochure for the full Consumer Protection statement.





# The Allan

3 bedroom semi-detached  
and mid-terraced home



Computer Generated Image - The Allan

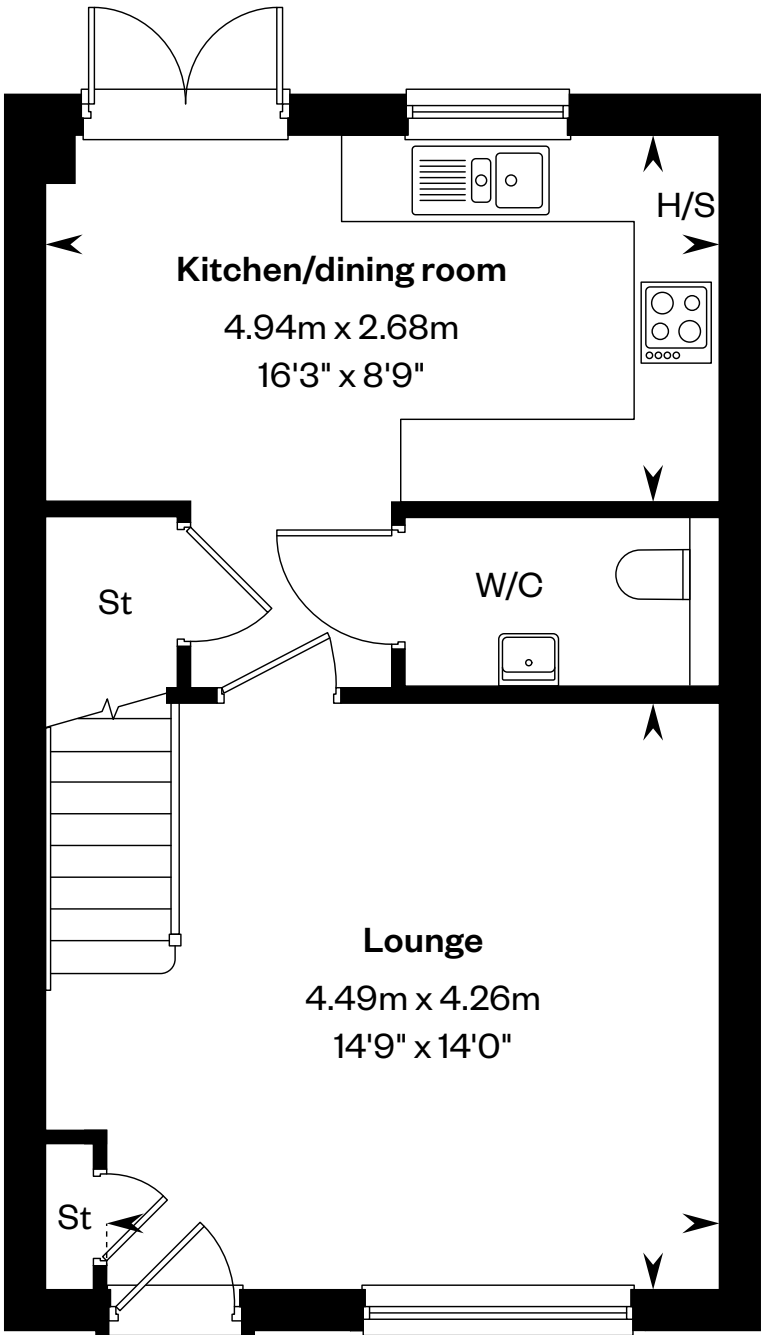
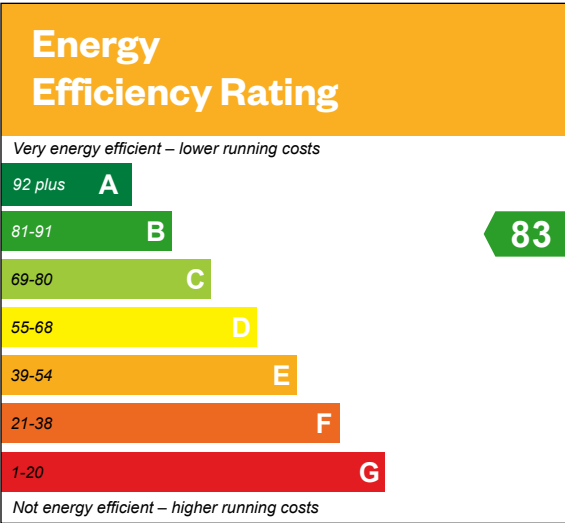


# The Allan

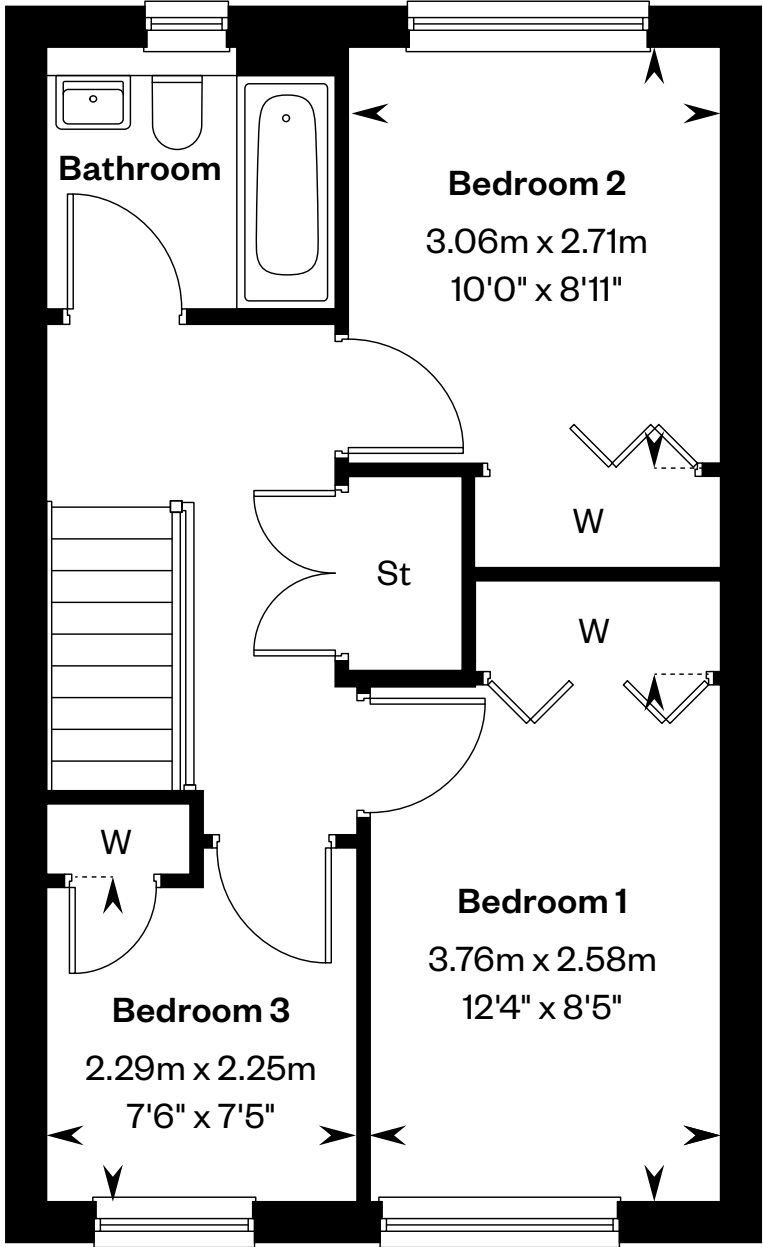
3 bedroom semi-detached and mid-terraced home

Plots 1, 4, 9 & 17 – as shown

Plots 12 & 20 – handed



Ground floor



First floor

H/S: Heating source cupboard. St: Store cupboard. W: Wardrobe.

IMPORTANT NOTICE TO CUSTOMERS: The Consumer Protection from Unfair Trading Regulations 2008. Cala Homes (West) Limited operates a policy of continual product development and the specifications outlined in this brochure are indicative only. The computer generated images and photographs do not necessarily represent the actual finishings/elevation or treatments, landscaping, furnishings and fittings at this development. Information contained is accurate at date of publication on 29.07.25. See the main brochure for the full Consumer Protection statement.





# The Arisaig

3 bedroom mid-terraced home



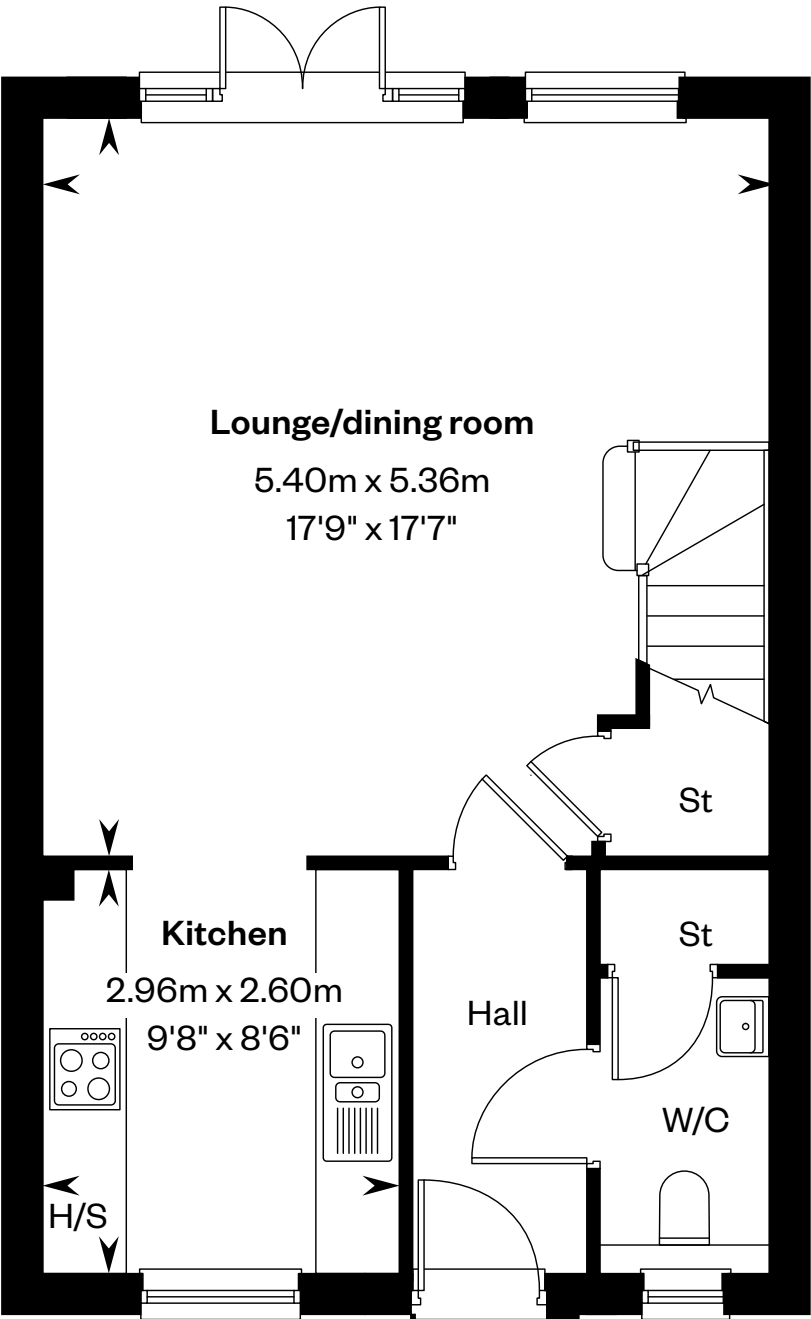
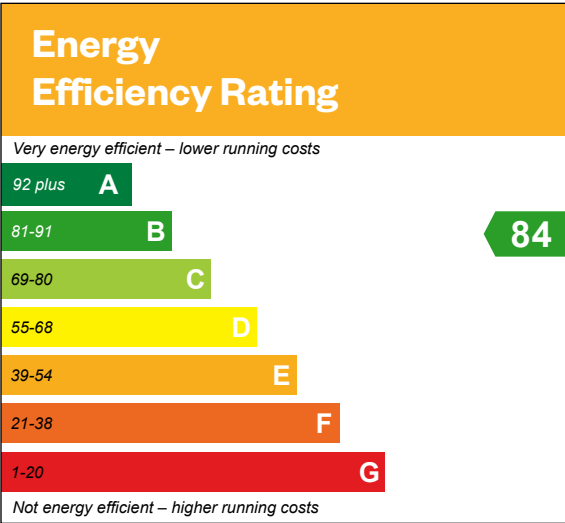


# The Arisaig

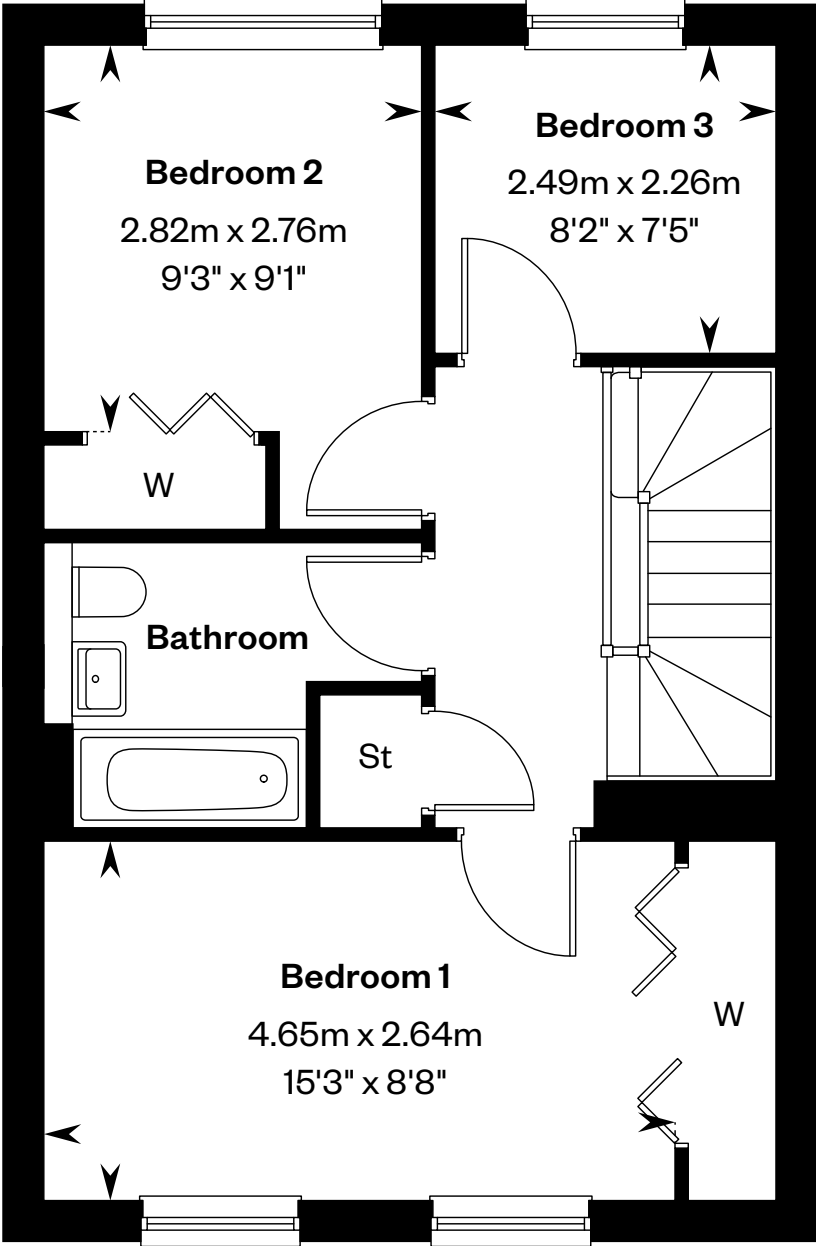
## 3 bedroom mid-terraced home

Plots 13 & 21 – as shown

Plots 5, 8 & 16 – handed



Ground floor



First floor

H/S: Heating source cupboard. St: Store cupboard. W: Wardrobe.

IMPORTANT NOTICE TO CUSTOMERS: The Consumer Protection from Unfair Trading Regulations 2008. Cala Homes (West) Limited operates a policy of continual product development and the specifications outlined in this brochure are indicative only. The computer generated images and photographs do not necessarily represent the actual finishings/elevation or treatments, landscaping, furnishings and fittings at this development. Information contained is accurate at date of publication on 29.07.25. See the main brochure for the full Consumer Protection statement.



# The Arran

3 bedroom end-terraced home



Computer Generated Image - The Arran

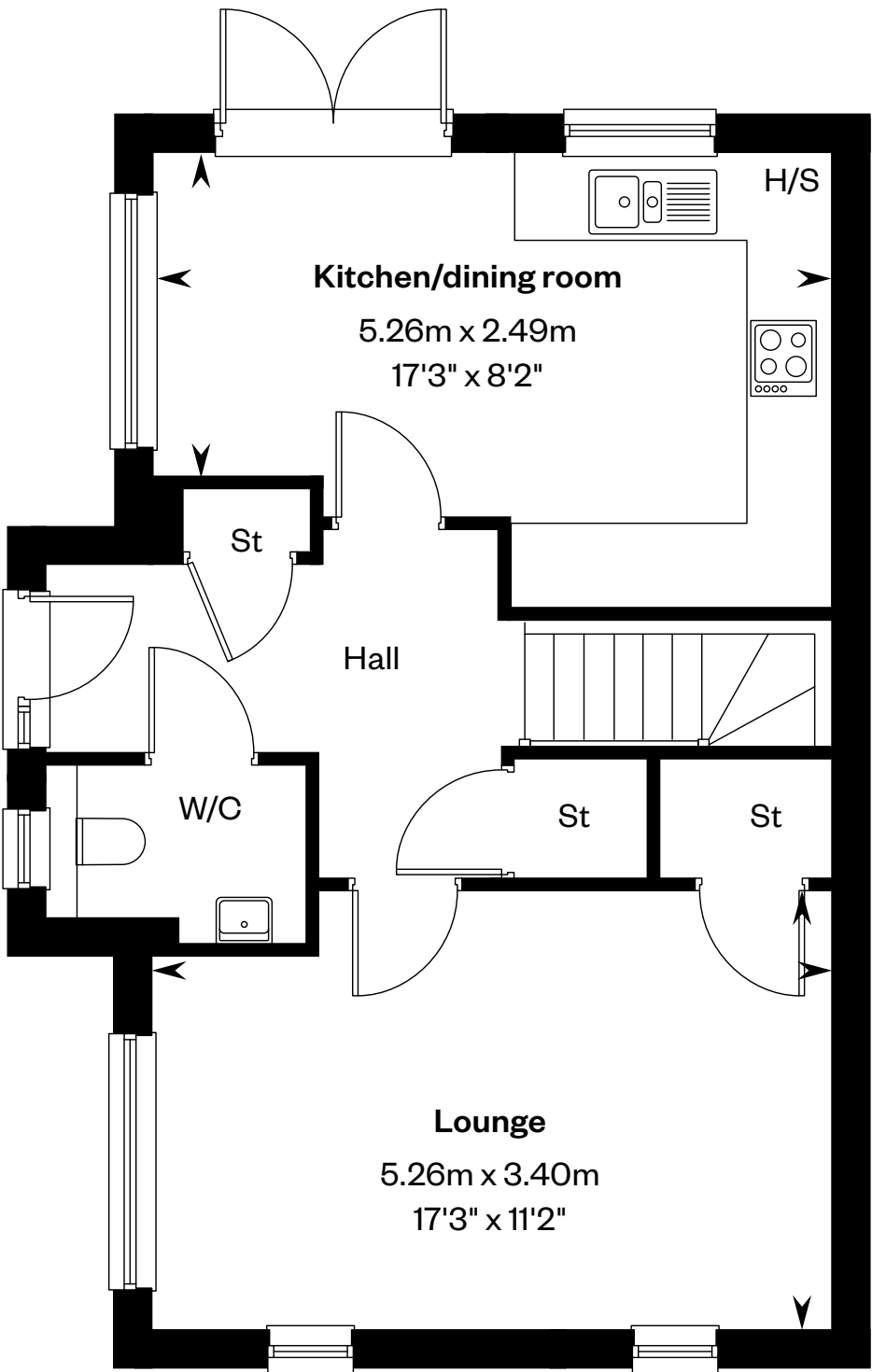
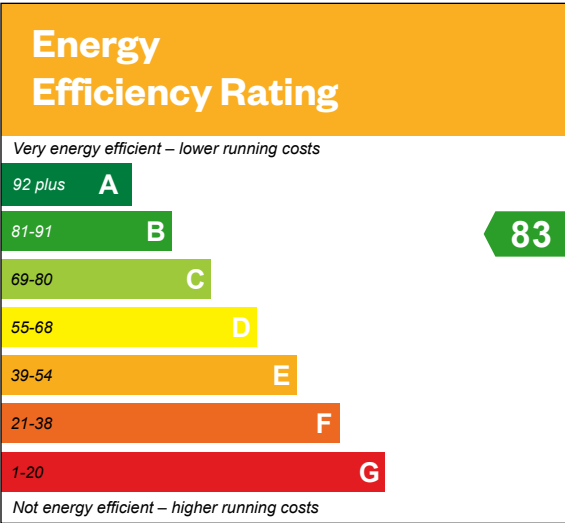


# The Arran

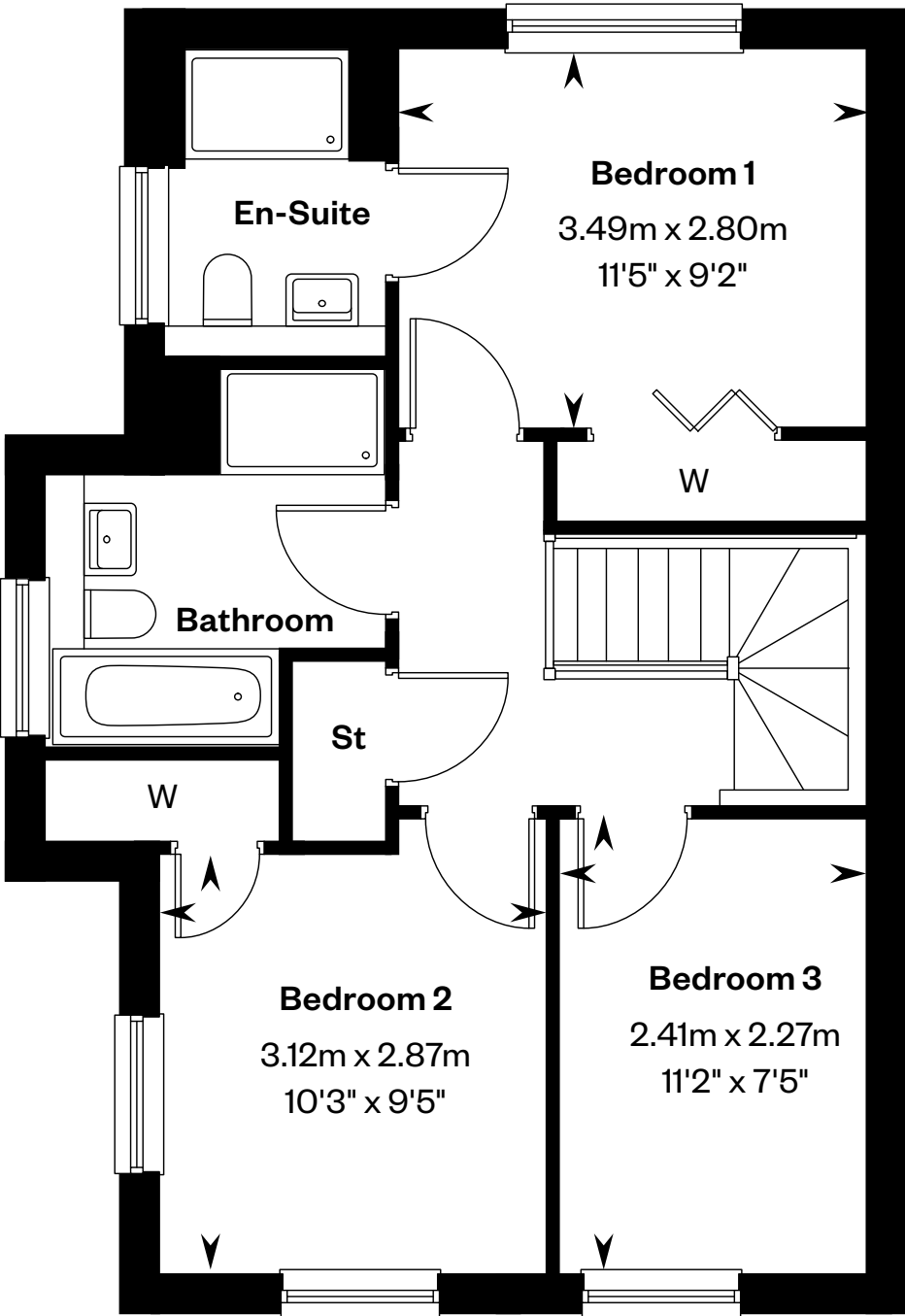
3 bedroom end-terraced home

Plot 6 – as shown

Plot 23 – handed



Ground floor



First floor

St: Store cupboard. W: Wardrobe.

IMPORTANT NOTICE TO CUSTOMERS: The Consumer Protection from Unfair Trading Regulations 2008. Cala Homes (West) Limited operates a policy of continual product development and the specifications outlined in this brochure are indicative only. The computer generated images and photographs do not necessarily represent the actual finishings/elevation or treatments, landscaping, furnishings and fittings at this development. Information contained is accurate at date of publication on 29.07.25. See the main brochure for the full Consumer Protection statement.





# The Avon

3 bedroom end-terraced and semi-detached home



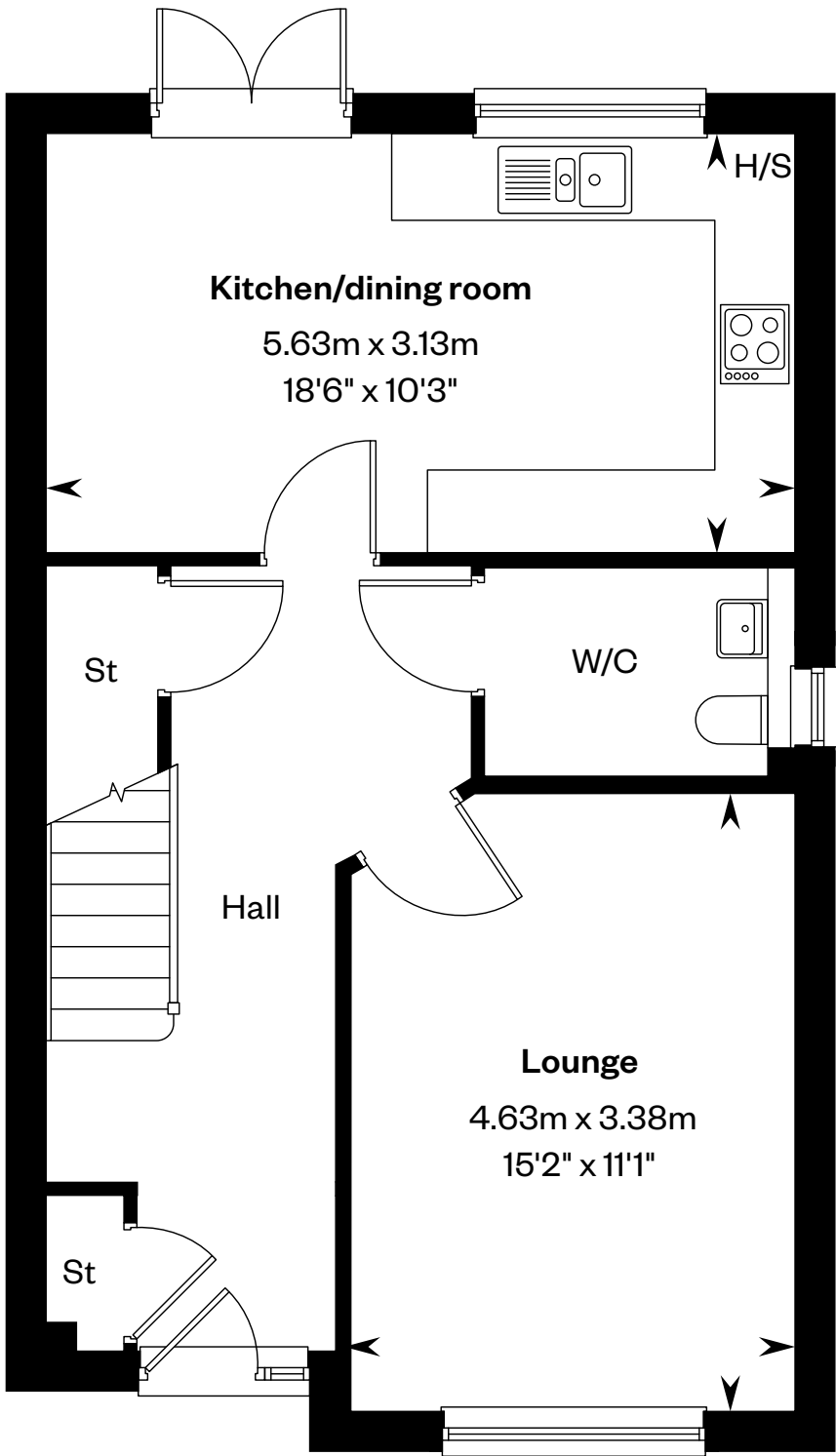
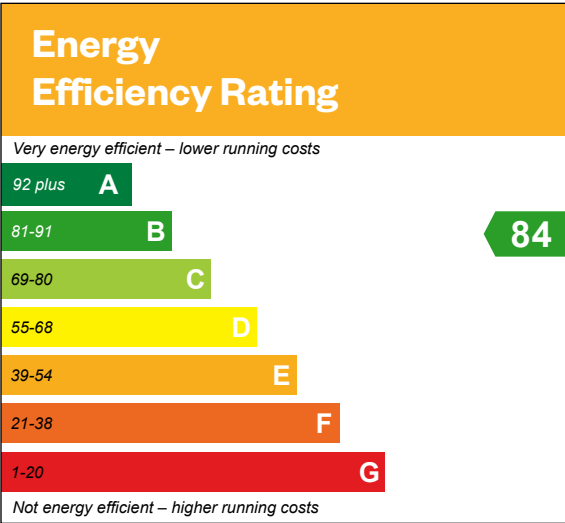


# The Avon

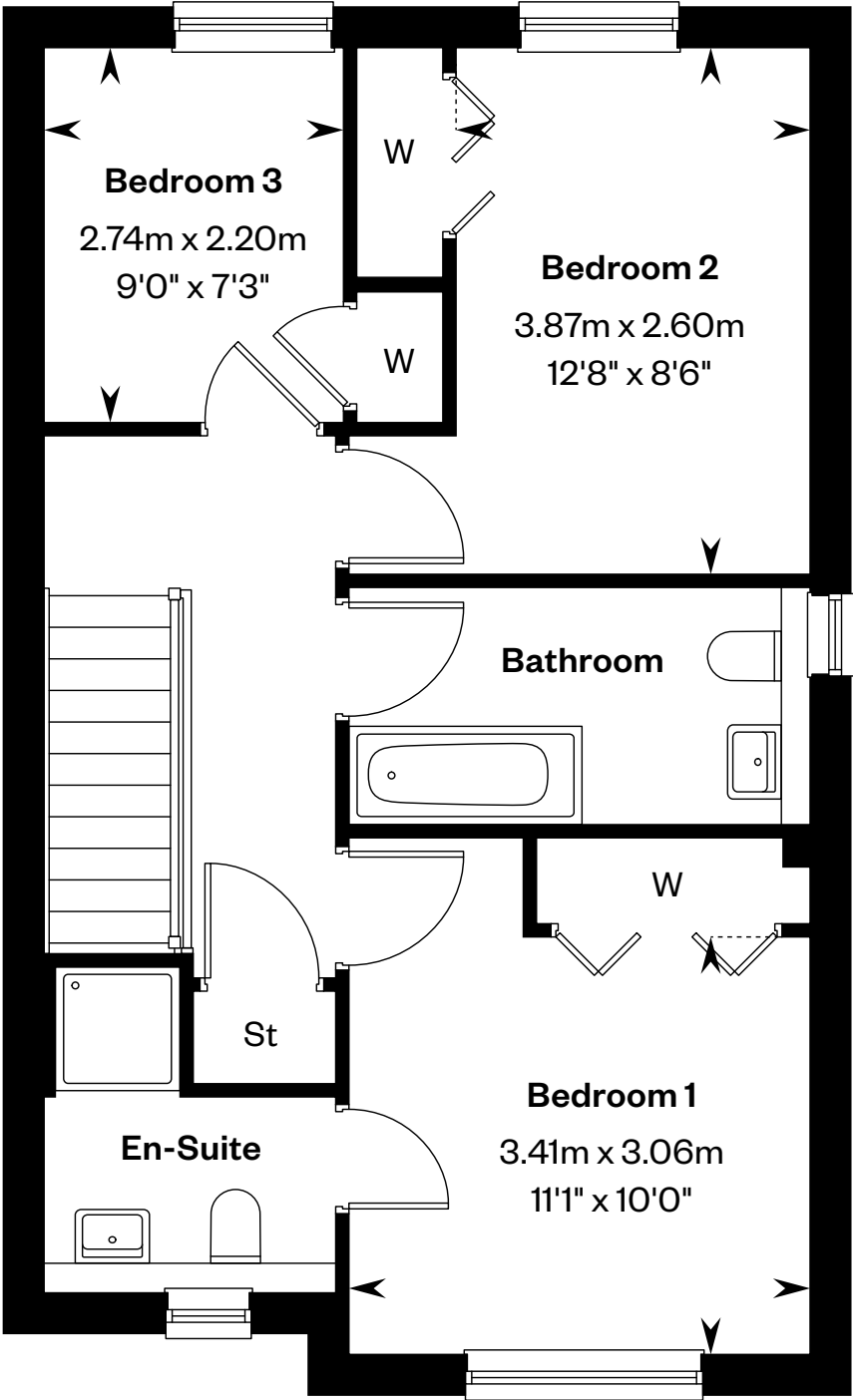
## 3 bedroom end-terraced and semi-detached home

Plots 3, 7, 11, 15 & 19 – as shown

Plots 2, 10, 14, 18, 22 & 26 – handed



Ground floor



First floor

H/S: Heating source cupboard. St: Store cupboard. W: Wardrobe.

IMPORTANT NOTICE TO CUSTOMERS: The Consumer Protection from Unfair Trading Regulations 2008. Cala Homes (West) Limited operates a policy of continual product development and the specifications outlined in this brochure are indicative only. The computer generated images and photographs do not necessarily represent the actual finishings/elevation or treatments, landscaping, furnishings and fittings at this development. Information contained is accurate at date of publication on 29.07.25. See the main brochure for the full Consumer Protection statement.





# The Banton

3 bedroom semi-detached home



Computer Generated Image - The Banton

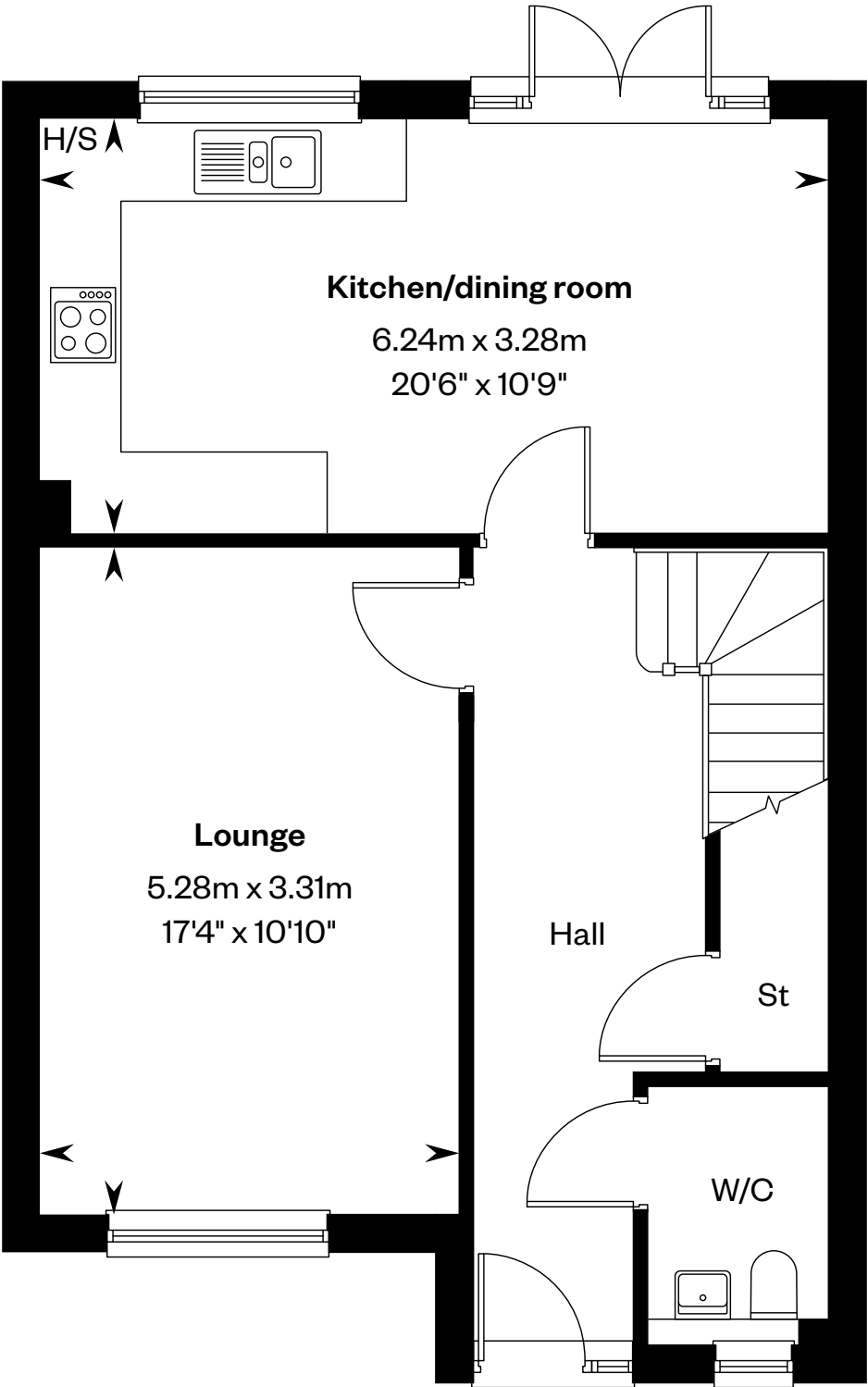
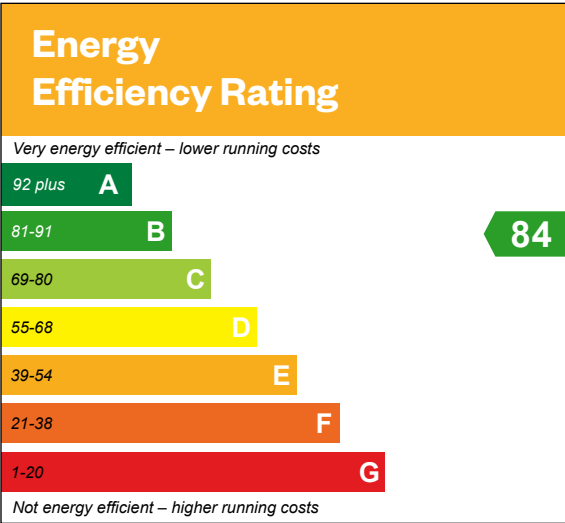


# The Banton

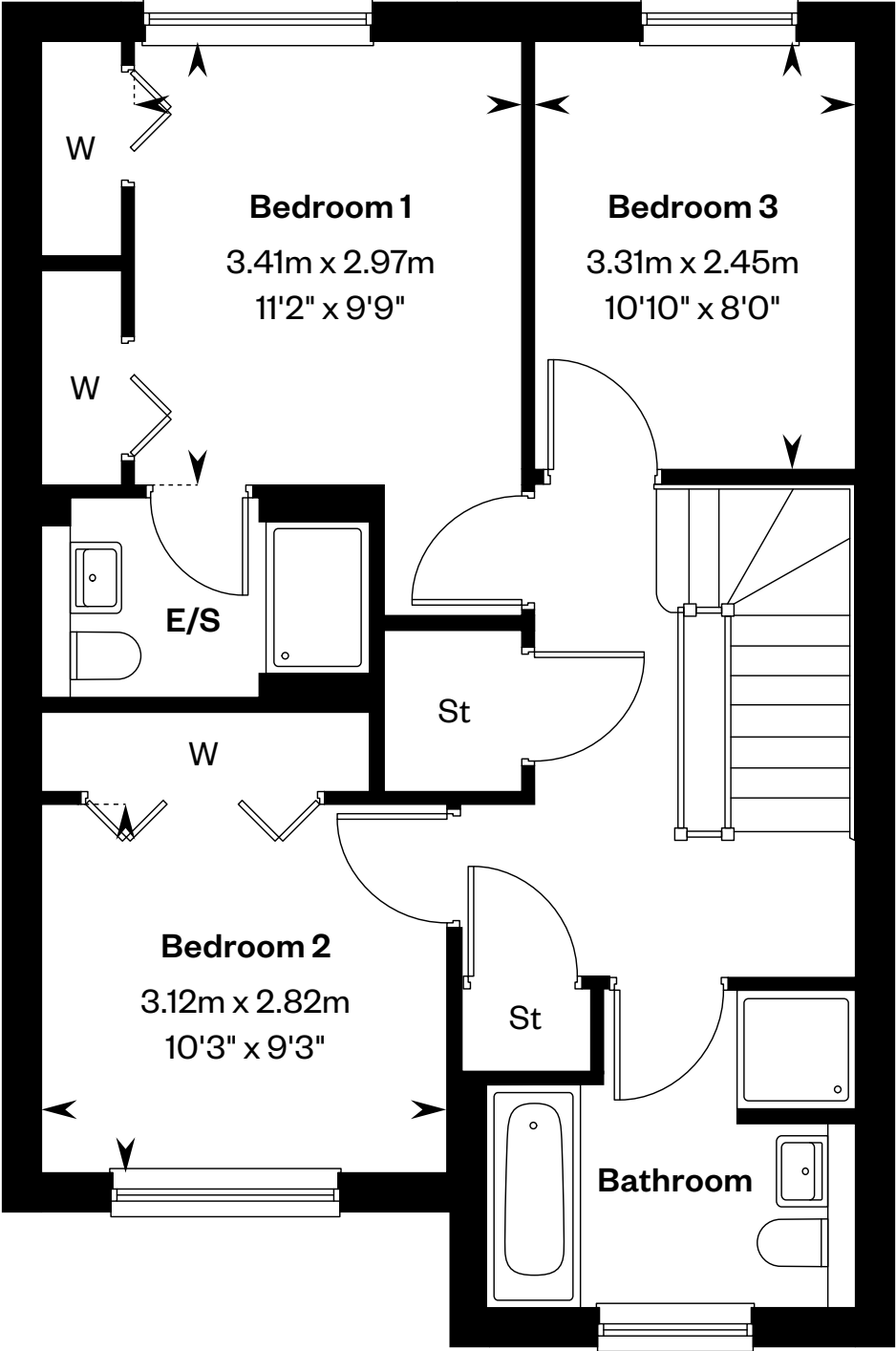
3 bedroom semi-detached home

Plots 28, 30, 37 & 41 – as shown

Plots 29, 31, 38 & 42 – handed



Ground floor



First floor

E/S: En-Suite. H/S: Heating source cupboard. St: Store cupboard. W: Wardrobe.

IMPORTANT NOTICE TO CUSTOMERS: The Consumer Protection from Unfair Trading Regulations 2008. Cala Homes (West) Limited operates a policy of continual product development and the specifications outlined in this brochure are indicative only. The computer generated images and photographs do not necessarily represent the actual finishings/elevation or treatments, landscaping, furnishings and fittings at this development. Information contained is accurate at date of publication on 29.07.25. See the main brochure for the full Consumer Protection statement.





# The Bargower

4 bedroom detached home



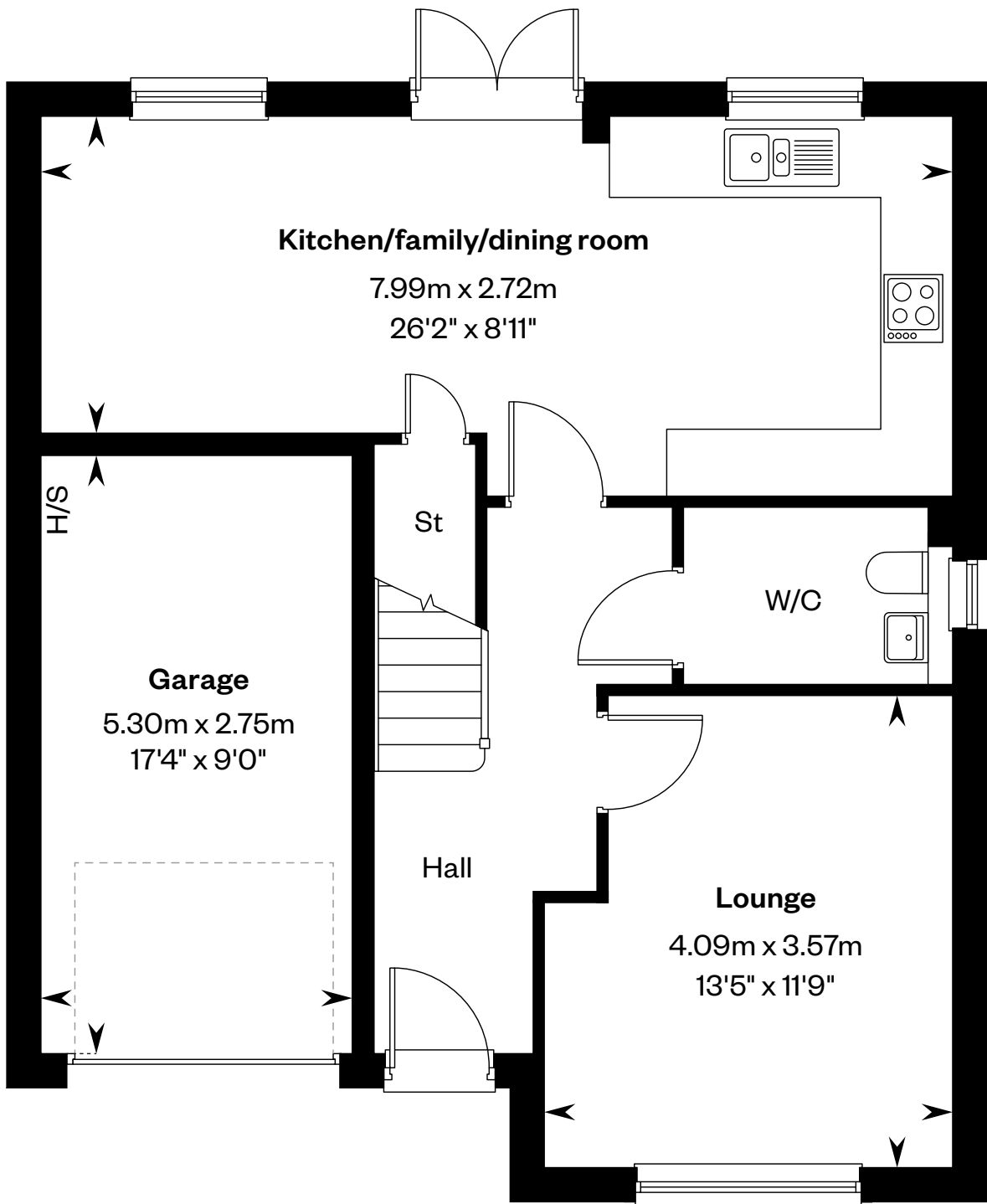
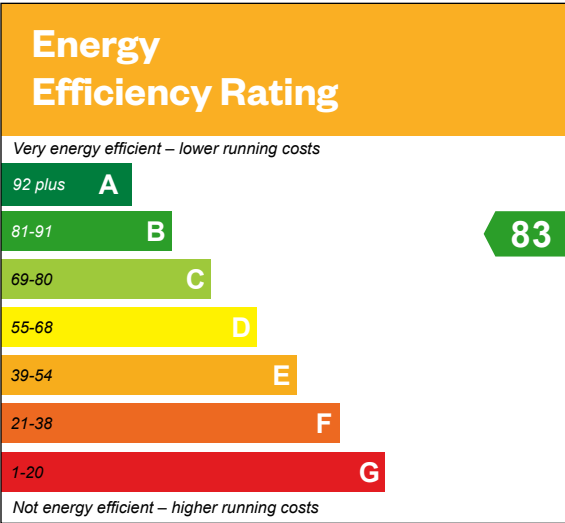
Computer Generated Image - The Bargower



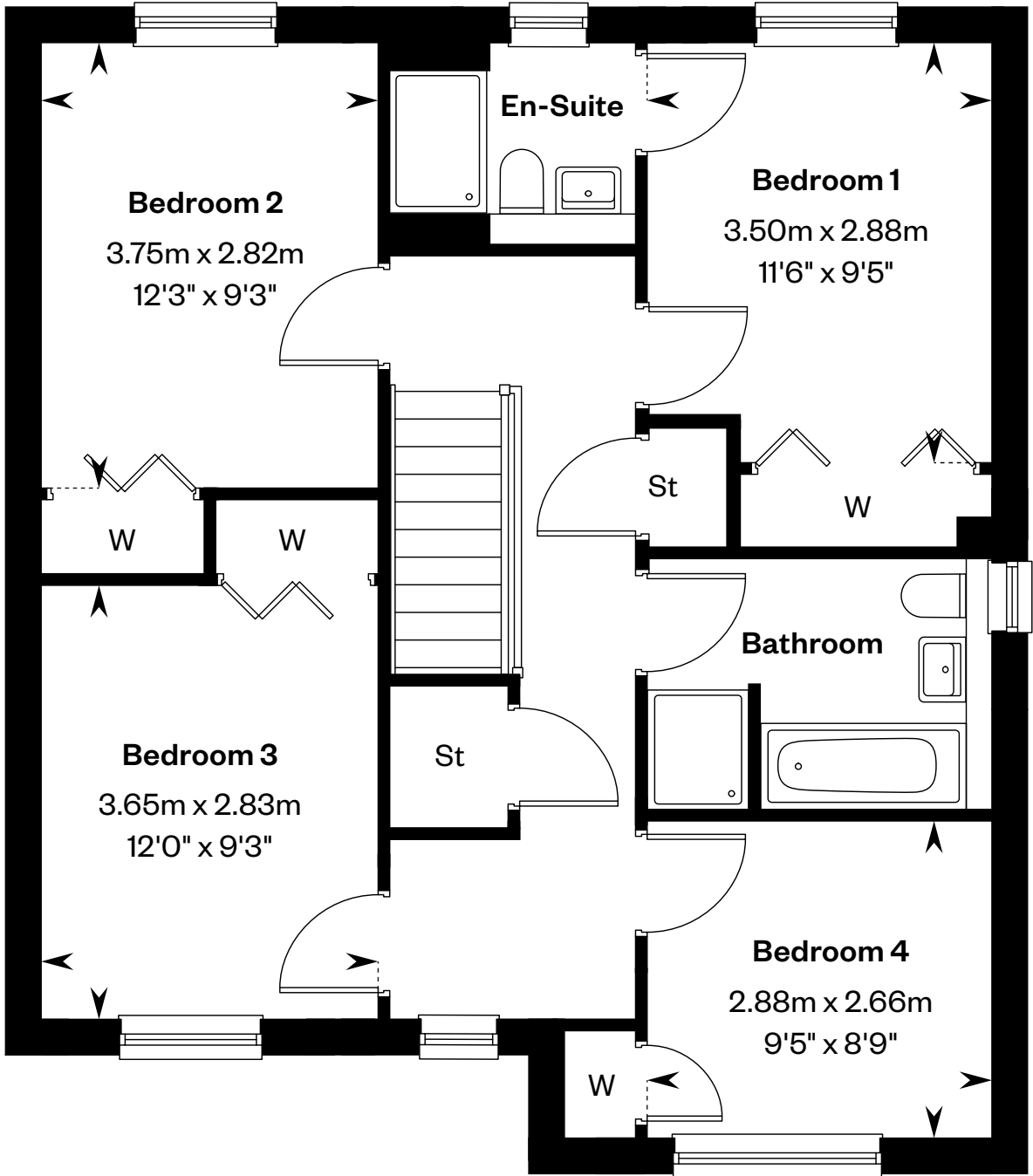
# The Bargower

4 bedroom detached home

Plots 33, 35, 51 & 52 – handed



Ground floor



First floor

H/S: Heating source cupboard. St: Store cupboard. W: Wardrobe.

IMPORTANT NOTICE TO CUSTOMERS: The Consumer Protection from Unfair Trading Regulations 2008. Cala Homes (West) Limited operates a policy of continual product development and the specifications outlined in this brochure are indicative only. The computer generated images and photographs do not necessarily represent the actual finishings/elevation or treatments, landscaping, furnishings and fittings at this development. Information contained is accurate at date of publication on 29.07.25. See the main brochure for the full Consumer Protection statement.





# The Barrie

4 bedroom detached home



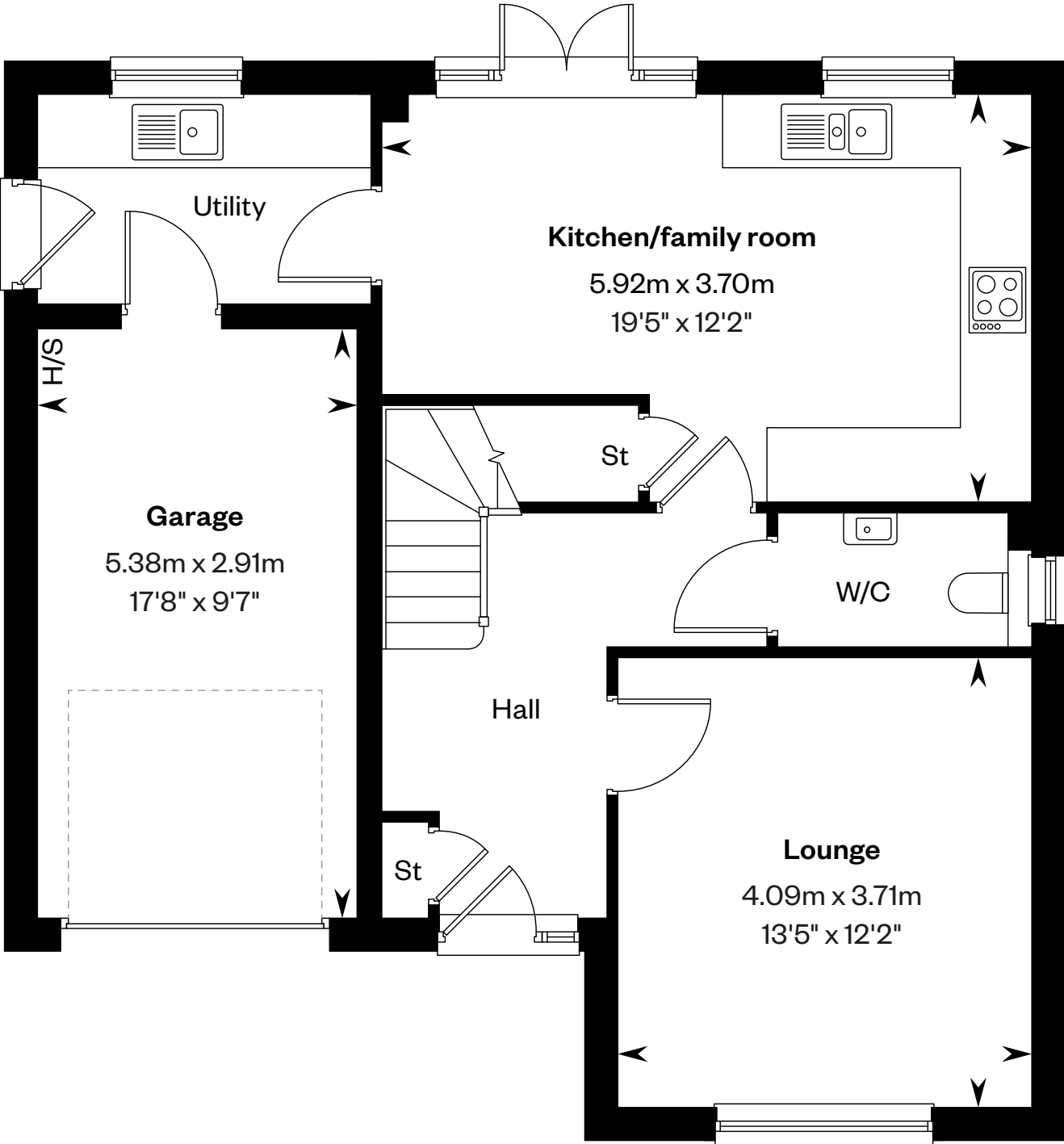
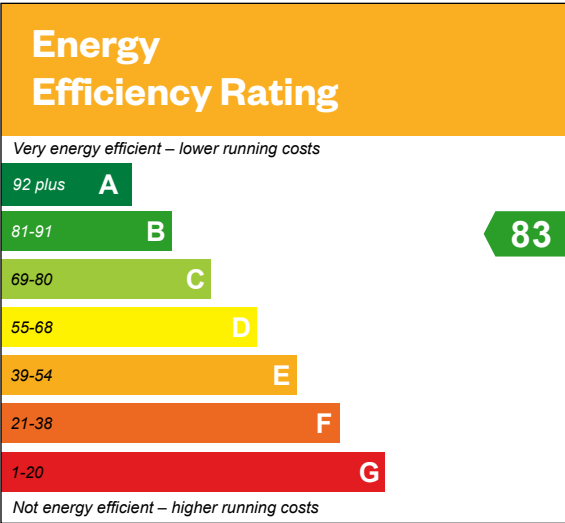


# The Barrie

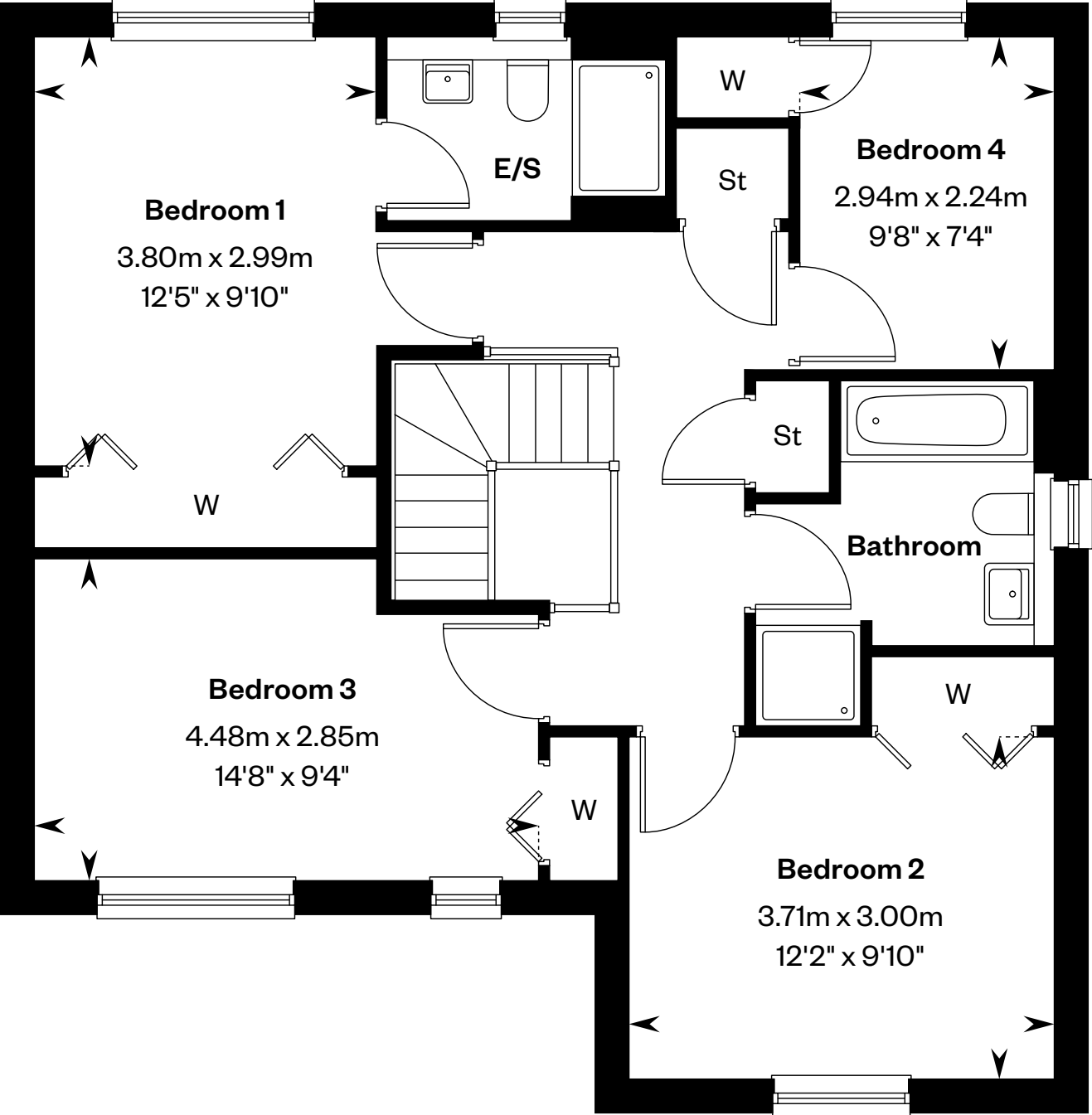
4 bedroom detached home

Plots 47 & 50 – as shown

Plot 39 – handed



Ground floor



First floor

E/S: En-Suite. H/S: Heating source cupboard. St: Store cupboard. W: Wardrobe.

IMPORTANT NOTICE TO CUSTOMERS: The Consumer Protection from Unfair Trading Regulations 2008. Cala Homes (West) Limited operates a policy of continual product development and the specifications outlined in this brochure are indicative only. The computer generated images and photographs do not necessarily represent the actual finishings/elevation or treatments, landscaping, furnishings and fittings at this development. Information contained is accurate at date of publication on 29.07.25. See the main brochure for the full Consumer Protection statement.





# The Brodick

4 bedroom detached home



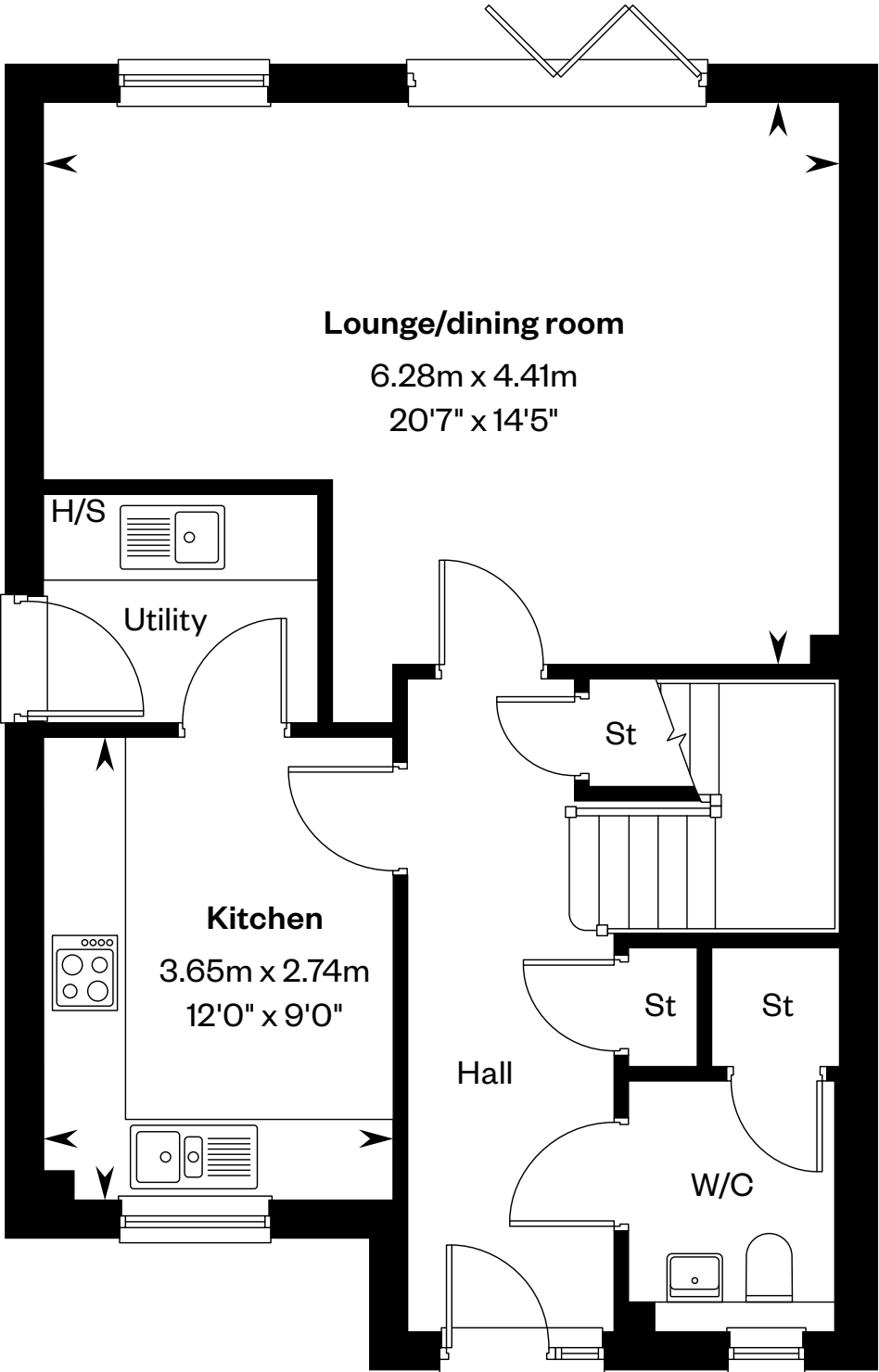
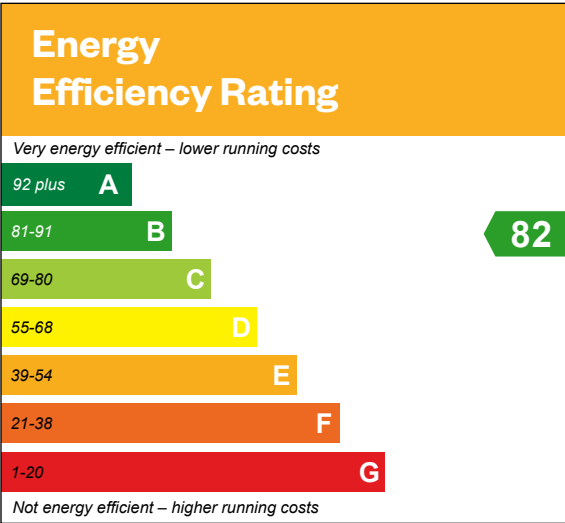


# The Brodick

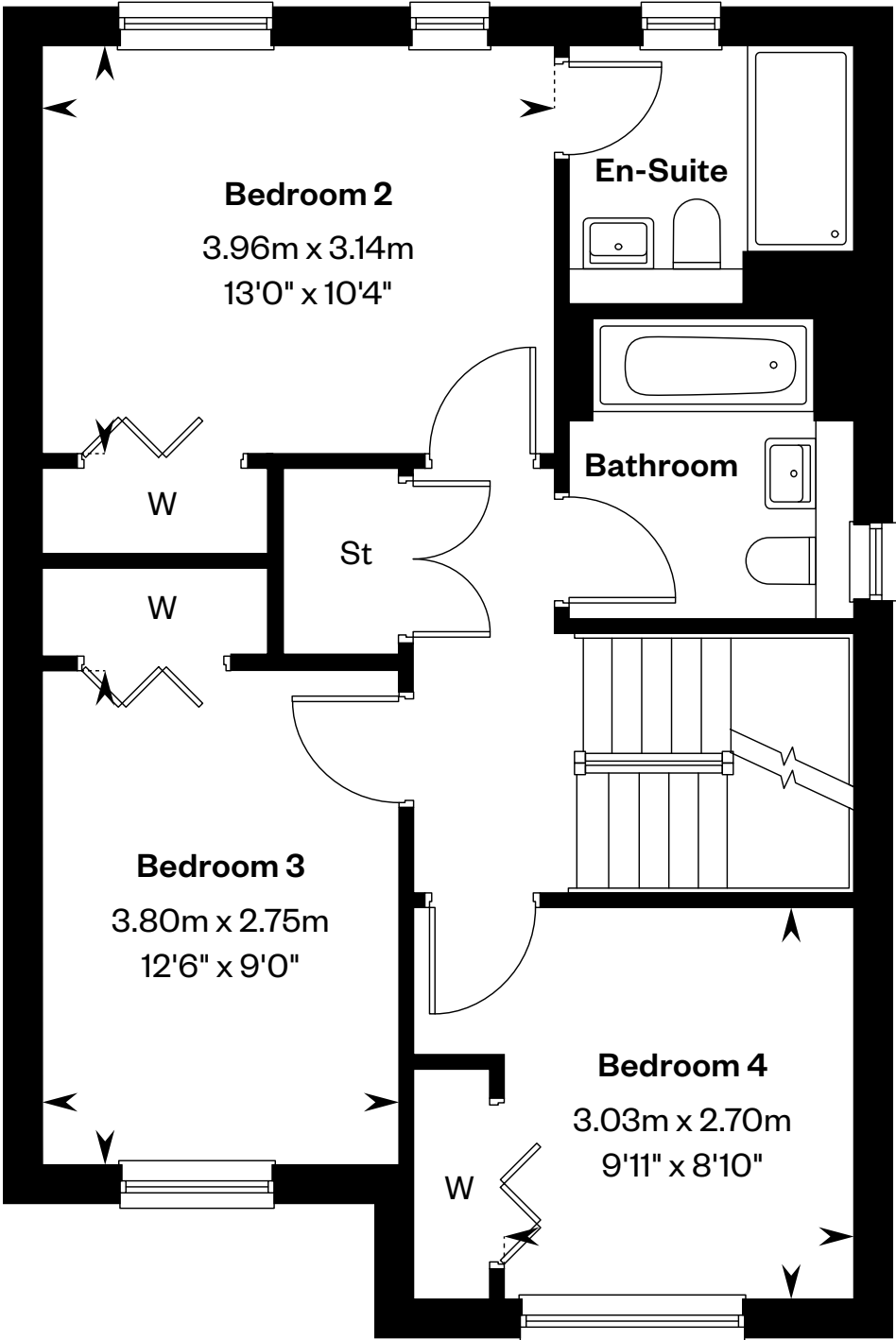
4 bedroom detached home

Plots 40 & 48 – as shown

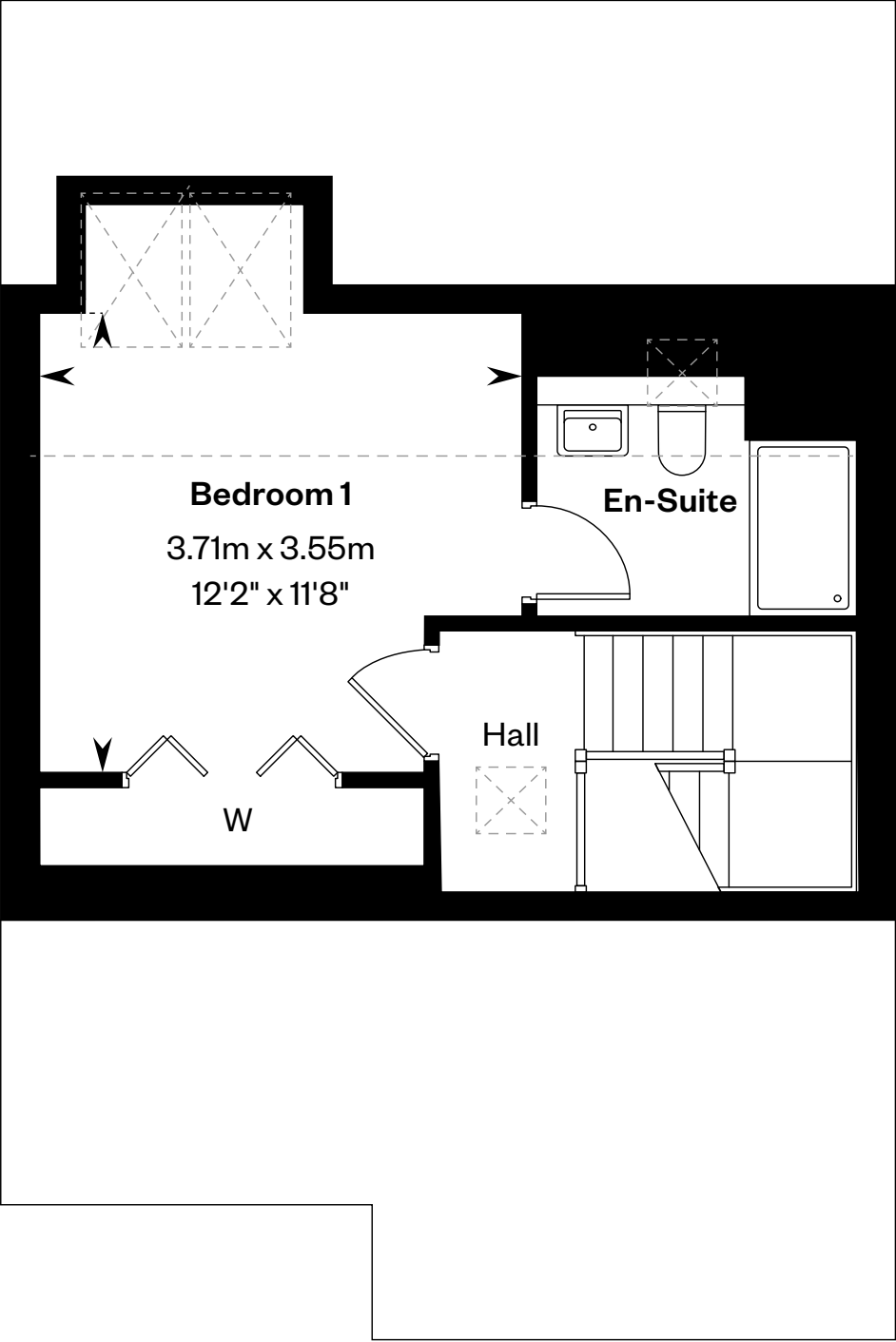
Plot 43 – handed



Ground floor



First floor



Second floor

H/S: Heating source cupboard. St: Store cupboard. W: Wardrobe. : Roof light/velux window.

IMPORTANT NOTICE TO CUSTOMERS: The Consumer Protection from Unfair Trading Regulations 2008. Cala Homes (West) Limited operates a policy of continual product development and the specifications outlined in this brochure are indicative only. The computer generated images and photographs do not necessarily represent the actual finishings/elevation or treatments, landscaping, furnishings and fittings at this development. Information contained is accurate at date of publication on 29.07.25. See the main brochure for the full Consumer Protection statement.





# The Bryce

4 bedroom detached home



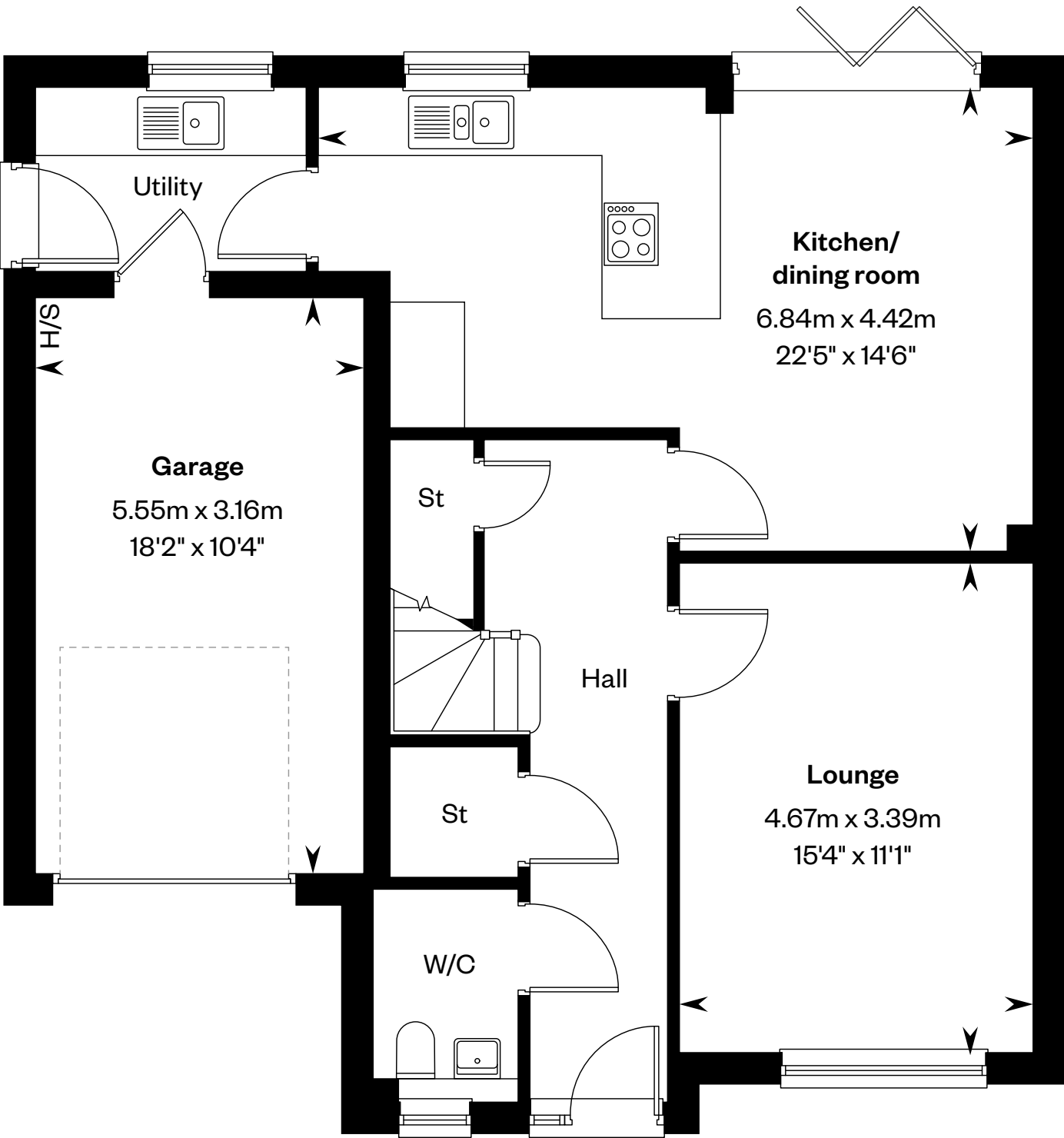
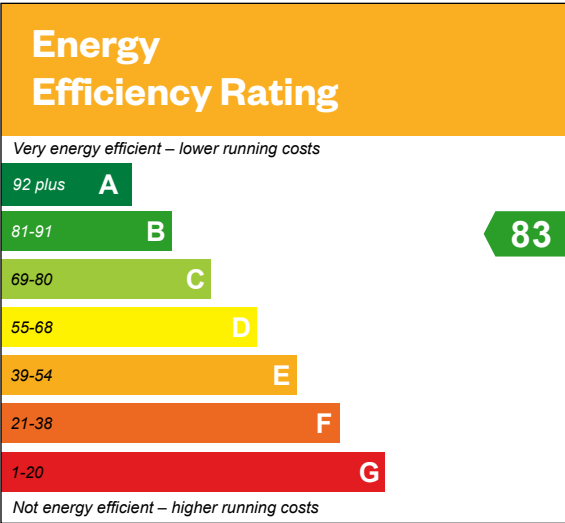


# The Bryce

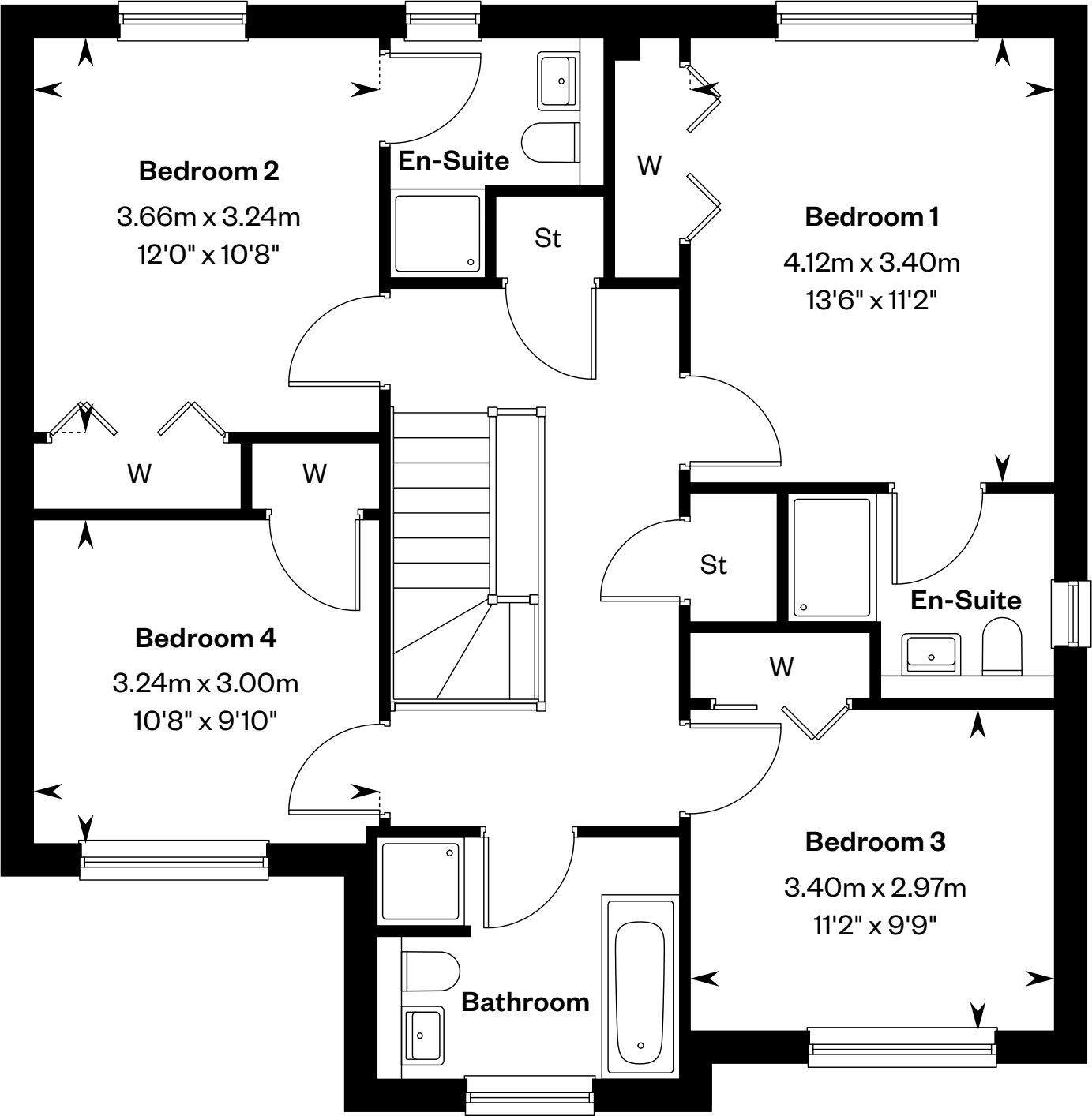
4 bedroom detached home

Plot 46 – as shown

Plots 32, 34 & 49 – handed



Ground floor



First floor

H/S: Heating source cupboard. St: Store cupboard. W: Wardrobe.

IMPORTANT NOTIOE TO CUSTOMERS: The Consumer Protection from Unfair Trading Regulations 2008. Cala Homes (West) Limited operates a policy of continual product development and the specifications outlined in this brochure are indicative only. The computer generated images and photographs do not necessarily represent the actual finishings/elevation or treatments, landscaping, furnishings and fittings at this development. Information contained is accurate at date of publication on 29.07.25. See the main brochure for the full Consumer Protection statement.





# The Colville

4 bedroom detached home with study



Computer Generated Image - The Colville

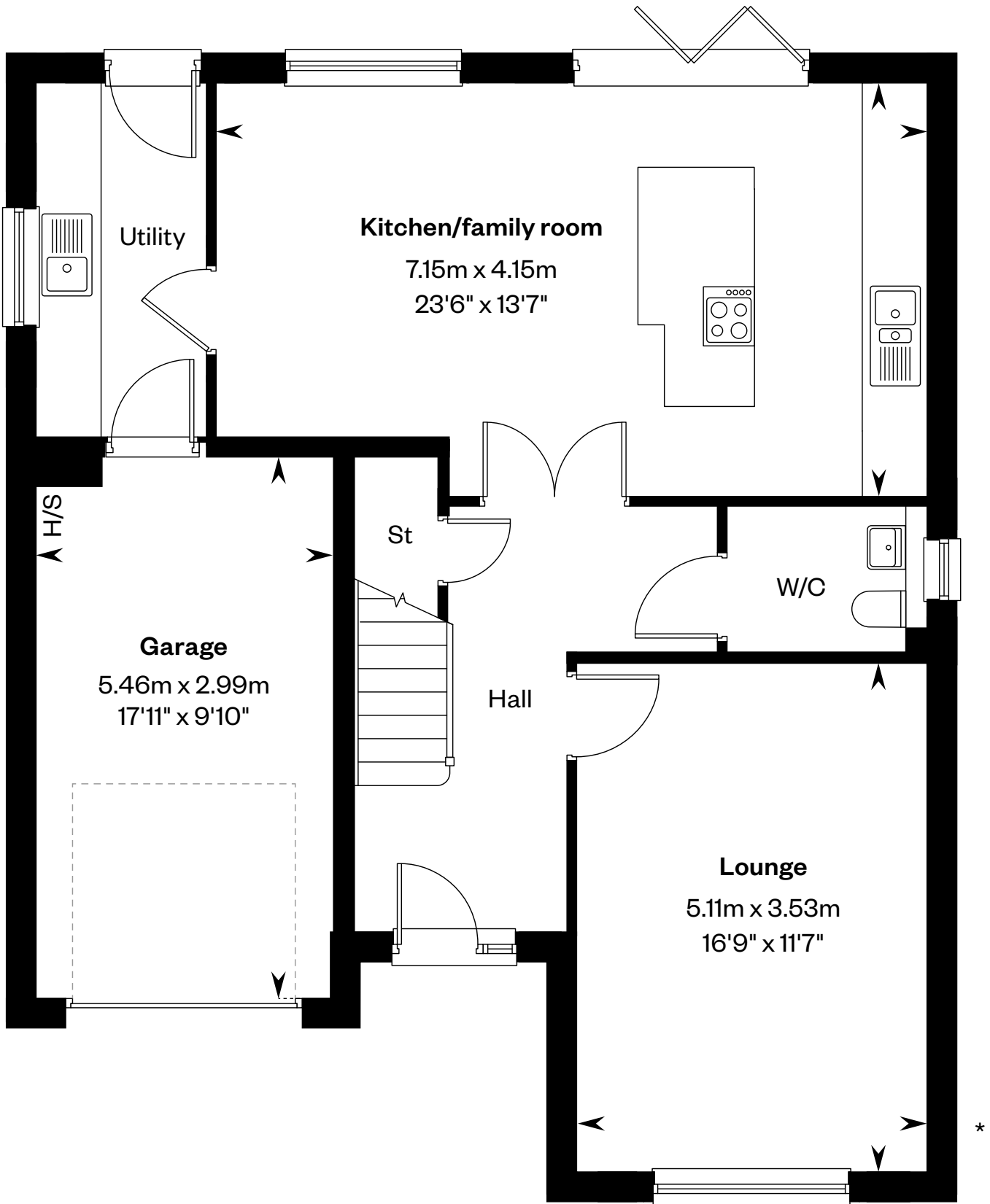
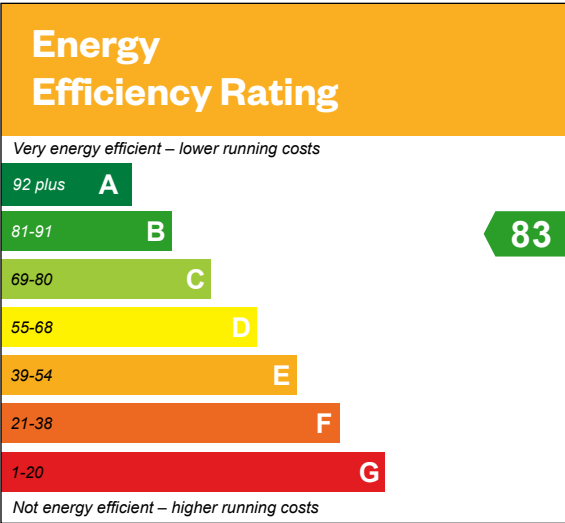


# The Colville

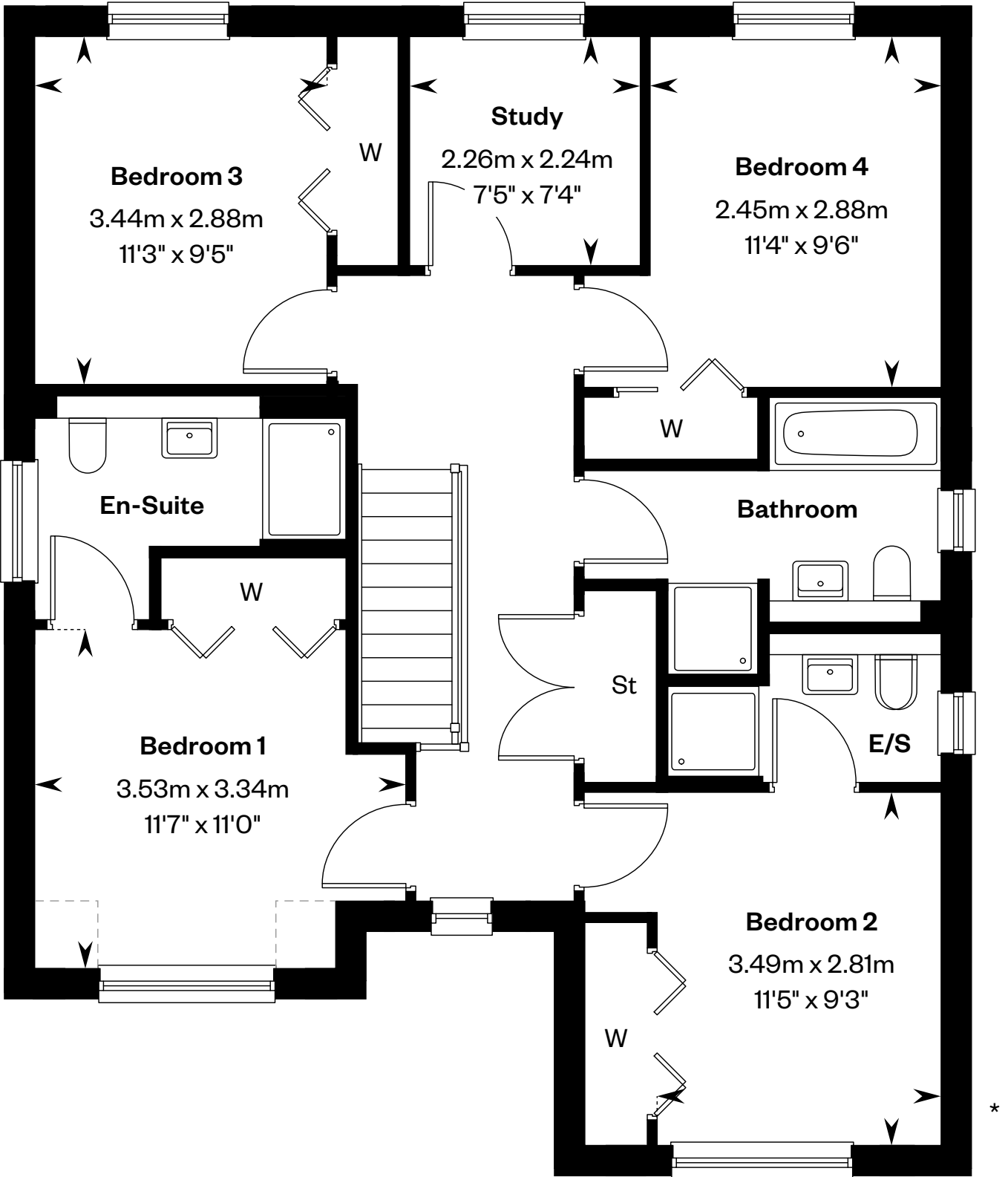
4 bedroom detached home with study

Plots 27, 36, 45 & 54 – as shown

Plots 44 & 53 – handed



Ground floor



First floor

\*Window configurations may vary, please speak to sales consultant for more details.

E/S: En-Suite. H/S: Heating source cupboard. St: Store cupboard. W: Wardrobe.

IMPORTANT NOTICE TO CUSTOMERS: The Consumer Protection from Unfair Trading Regulations 2008. Cala Homes (West) Limited operates a policy of continual product development and the specifications outlined in this brochure are indicative only. The computer generated images and photographs do not necessarily represent the actual finishings/elevation or treatments, landscaping, furnishings and fittings at this development. Information contained is accurate at date of publication on 29.07.25. See the main brochure for the full Consumer Protection statement.